

Bridger-Teton National Forest



****2014 SEASONAL POSITION OUTREACH NOTICE****

The Bridger-Teton National Forest will be hiring seasonal positions for the 2014 summer season starting on January 13, 2014. The Forest may fill up to 19 wildland fire positions, including: helitack, engines, fire module and fire cache. Housing may be available at all duty stations. More information on these positions may be found at www.tetonfires.com.

More than one position may be filled for each job announcement listed below. These positions will be temporary, not to exceed 1039 hours. All positions will be advertised on USAJOBS, www.usajobs.gov. **The 2014 announcement numbers are forthcoming. Ensure you apply to the 2014 when made available and if you have questions, contact the supervisor of record found in the outreach.**

Successfully passing the work capacity test (WCT) at the arduous level is a condition of employment for all wildland fire positions except the fire cache laborer. The Arduous fitness (Pack) test requires completing a 3 mile hike within 45 minutes while carrying a 45 pound pack.

About the Forest:

The 3.4 million acre Bridger-Teton National Forest is the second largest National Forest in the United States outside Alaska. It lies in Western Wyoming, adjoining Yellowstone and Grand Teton National Parks and within the Greater Yellowstone Ecosystem, the largest remaining area of undeveloped land in the 48 conterminous United States. It is noted for its scenery and natural features, large and diverse wildlife populations, and habitat for threatened and endangered species. There are six districts on the Forest: Kemmerer, Afton, Big Piney, Pinedale, Jackson and Buffalo. The Supervisor's Office is in Jackson.

About the positions:

Laborer (fire cache):

The selected individual will serve primarily as an Assistant to the Teton Interagency Fire Warehouse Manager in Jackson, WY. The warehouse supports wildland fires on the Bridger-Teton National Forest and in Grand Teton National Park, and mutual aid is provided to Teton County lands as needed. Total land mass is about 1.5 million acres. The Fire Warehouse Manager works directly for the Bridger-Teton National Forest FMO (Fire Management Officer).

Duties of the Fire Warehouse Assistant will include assembling and loading supply orders and filling out waybills, and other documentation; loading and delivering supplies to fires; organizing, stocking, and maintaining an inventory of supplies; supply ordering and tracking; unloading supplies returning from fires; forklift operation; large truck operation, and trailer pulling. The warehouse will often support multiple fires at one time and deliver supplies long distances over rough unpaved roads to remote locations. During busy periods with heavy fire loads additional personnel will assist with loading and delivery of supplies. The Fire Warehouse Assistant will manage the fire warehouse in the absence of the Fire Warehouse Manager.

On the B-T one can expect to work within a diverse fire management organization which places high expectations on individual and crew performance, and provides some unique Fire Management experience opportunities.

Title	Number of positions	Duty stations	Contact	Grade levels	Announcement number
Laborer	1	Jackson	Heidi Zardus 307.739.5079 hazardus@fs.fed.us	WG-3	2014 announcement numbers (OCR) are forthcoming

Engine modules:

These Engine Modules are part of the Teton Interagency Fire Management organization. The Bridger-Teton Fire organization is made up of three zones. In addition to Type 4 and/or Type 6 engines, each zone is comprised of one Fire Prevention Technician, a Fuels AFMO, an Operations AFMO and a Zone FMO. A good working relationship exists with County VFD's. The engine modules consist of 4 permanent staff (Captain, Engineer, Assistant, and Senior FF) and 2-4 seasonal crewmembers. Seasonal employees may be provided government housing.

A normal fire season for the area is late July through September. Fires on the Bridger-Teton National Forest have been reported as early as May and as late as December. Seasonal crewmembers can expect to start in mid-May to early June and work into October. These engine crews are highly motivated, with individuals who desire to work long, hard hours to complete any assignment. Expectations for the entire crew are high. Fire assignments include local Initial Attack to off-Forest, Extended Attack large fires. Assignments can be with the Engine or with the Teton Interagency Type 2IA hand crew. If not assigned to a fire, engine fire crews can be found out in the Forest preparing prescribed burn units, carrying out fuel reduction treatments or completing various other projects for the Districts.

Title	Number of positions	Duty stations	Contact	Grade levels	Announcement number
Forestry Technician – Fire (Engine)	Up to 12	Kemmerer	Lance Jorg 307.828.5124 ljorg@fs.fed.us	GS-03	Forestry Aid (Suppression) 14-TEMP110403-009019JG-DT Forestry Technician (Fire ENG Operator) 14-TEMP110403-009034JG-DT Forestry Technician (Fire ENG Operator) 14-TEMP110403-009043JG-DT
		Afton	Adam Hansen 307.886.5335 ahansen@fs.fed.us		
		Big Piney	Rick Lancaster 307.276.5822 rlancaster@fs.fed.us	GS-04	
		Pinedale	Rick Lancaster 307.276.5822 rlancaster@fs.fed.us	GS-05	
		Jackson & Moose	Chris Vero 307.739.5418 cvero@fs.fed.us		

Teton Helitack:

The Teton Interagency Fire Management Program is planning to fill one to three Seasonal Helitack Crewmember positions in 2014. These positions are Forestry Technician GS-0462-04/05. These are seasonal positions located in Jackson, Wyoming at the Teton Interagency Helibase. They will be hired through the US Forest Service and tour of duty will be approximately late May to mid-October. We are a 20-person helitack crew comprised of Forest Service and Park Service personnel. Our primary missions are fire management and search and rescue for the Bridger-Teton National Forest and Grand Teton National Park. Housing may be available.

Please visit www.tetonhelitack.com for more information about the crew.

Title	Number of positions	Duty stations	Contact	Grade levels	Announcement number
Forestry technician – Fire (Helitack)	Up to 3	Jackson	Teton Helibase 307.739.5557 Dgomez@fs.fed.us smarkason@fs.fed.us	GS-4 GS-5	2014 announcement numbers (OCR) are forthcoming

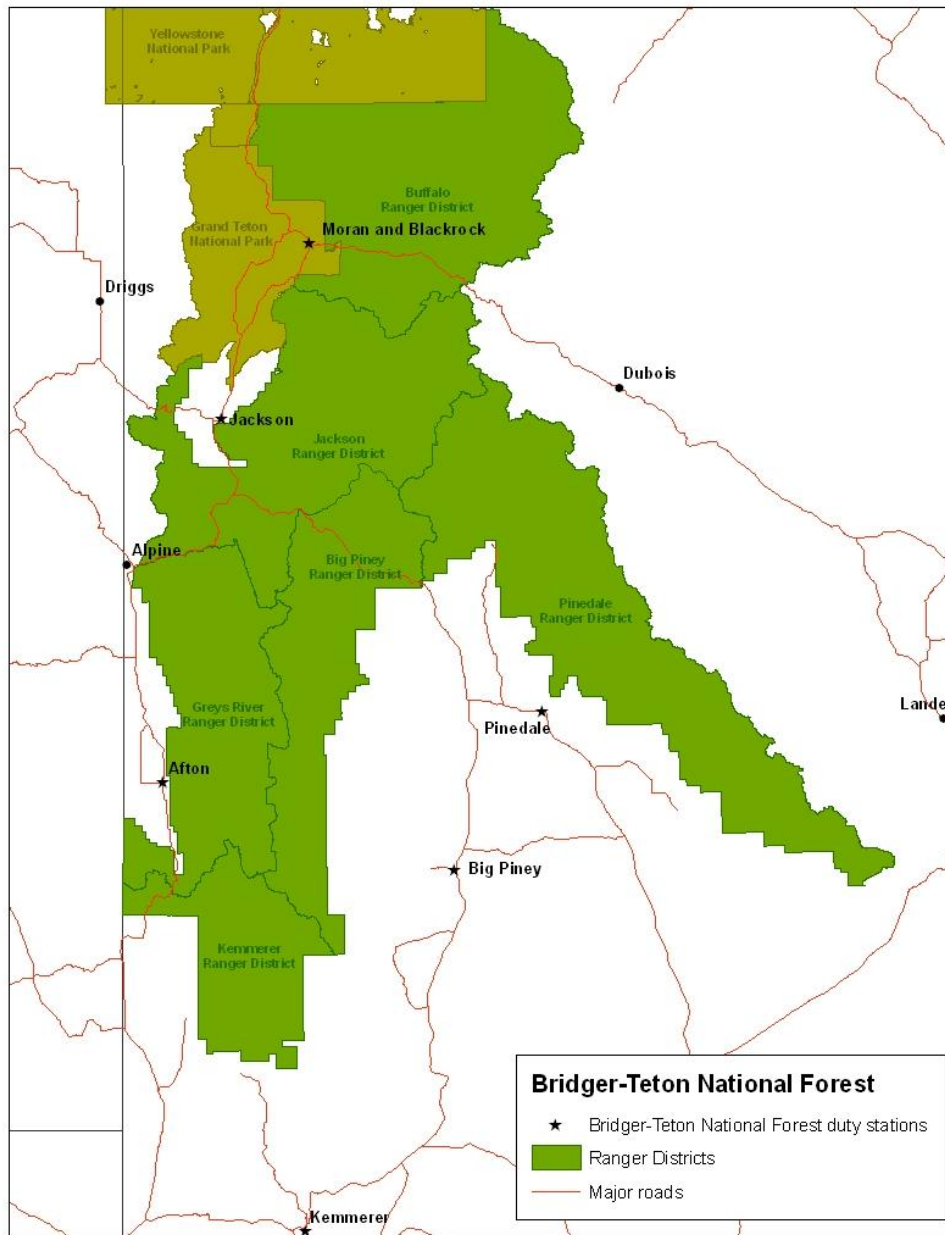
Teton Fire module:

The Teton Fire Module is interagency in its composition and works for the Bridger-Teton National Forest and Grand Teton National Park. It specializes in fuels reduction projects, hazard tree removal, wildland fire suppression, prescribed fire preparation and implementation, and managing fires for resource benefit. The module consists of one GS-8 Crew Supervisor, one GS-7 Assistant, and one GS-6 Squad Leader and 8-9 crew members. While working on Forest and Park projects, crewmembers routinely work long days that include hiking, heavy lifting, and extensive use of hand tools, chainsaws, and other equipment. Some projects are away from the duty station requiring the crew to camp at the project site. The module is also available for wildfire assignments using a wide range of tools and skills to complete a variety of fire management objectives. Assignments may include ignition, suppression, monitoring, and data collection utilizing everything from chainsaws and drip torches to computers, weather stations, and motion-sensing cameras. Fire assignments last up to 18 days, prior to a day off, and are generally spent camping near the fire with few amenities. Whether on project work or wildfires crewmembers routinely are hiking on steep mountain terrain carrying approximately 45 lbs. in gear. Due to the physical nature of this position it is imperative that crewmembers show up in excellent physical shape to prevent injuries.

Title	Number of positions	Duty stations	Contact	Grade levels	Announcement number
Forestry technician – Fire (Handcrew)	Up to 3	Moran	Jason Lawhon 307-739-5431 jdlawhon@fs.fed.us	GS-03 GS-04 GS-05	Forestry Aid (Suppression) 14-TEMP110403-009019JG-DT 2014 GS-04 & GS-05 announcement numbers are still pending

About the duty stations:

The map below shows the six duty stations on the Bridger-Teton National Forest.



Kemmerer:

The town of Kemmerer is a small community located high in the rolling hills of Western Wyoming in the Green River Basin along the Hams Fork River. The elevation is 6,927 feet with a population of approximately 3,126. The Kemmerer area offers an abundance of fishing, hunting, hiking, wildlife watching, and snowmobiling. Golfers also enjoy a challenging nine-hole golf course set near the Hams Fork River. Several benefit tournaments are conducted throughout the summer. Kemmerer offers four private quarries where you can dig your own fossils, and is the home of Fossil Butte National Monument, an 8,198 acre natural area that was established in 1972 and many historic cut-off trails of the Oregon, Mormon and California Trails. Housing may be available.

Afton:

Afton is the largest town in Star Valley and is located at the south end. Afton has a population of about 2,000. Star Valley is 60 miles long by 5 miles wide, located between the Idaho-Wyoming border to the west and the Salt River Range on the east, the elevation is 6,134 feet. The town also boasts the largest Elkhorn Arch in the world spanning 75 feet and containing over 3000 antlers donated by the Wyoming Game and Fish Department. Cutter (winter horse chariot) racing had its humble beginnings in Afton, and there is a track where locals enjoy this thrilling sport. The nearest airport is in Jackson. The crime rate in Afton is well below the national average. The state of Wyoming does not have State income tax.

Big Piney:

Big Piney is a small community of about 800 people and is located on Highway 189, 45 miles south west of Pinedale and 90 miles south of Jackson, Wyoming. Big Piney is a rural community with an economic focus on ranching and oil and gas production. Although small, the community offers a multitude of benefits with a great library, fitness center, bowling alley and movie theater. Located just 30 minutes east of the Wyoming Range and 10 minutes from the Green River the fishing, hiking, hunting and all other outdoor opportunities are abundant.

Pinedale:

Pinedale, Wyoming, is located 80 miles southeast of Jackson, WY and 100 miles North of Rock Springs WY. The Town of Pinedale, established in 1878 by cattlemen, lies 15 miles west of the Wind River Range of the Continental Divide in western Wyoming. Pinedale's Main Street (Highway 191) has a small town western flavor and is the county seat for Sublette County. Pinedale claims to be the only county seat in the US to lack a single traffic light.

Jackson:

The Town of Jackson is the county seat of Teton County and the only incorporated municipality in the county. "Jackson Hole" as it's often called, refers to the whole area which is a 50 mile long valley surrounded by high mountains. Jackson is a popular tourist destination because of its proximity to Yellowstone & Grand Teton National Parks, unmatched scenic beauty, world-class skiing, and western character. For tourism information, including listing of lodging, restaurants, and shopping, please contact the Jackson Hole Chamber of Commerce at 307-733-3316 or on the web at www.jacksonholechamber.com. This spectacular valley in the mountains offers residents and visitors alike an unparalleled array of outdoor activities for year-round enjoyment. From world-class skiing, snowmobiling, backcountry touring and dog sledding in the winter to hiking, rafting, fly fishing, paragliding, mountain biking and rock climbing in the summer.

Blackrock:

The Blackrock Ranger Station is located on the Buffalo Ranger District 40 miles North of Jackson and 8 miles east of Moran, Wyoming. The District manages approximately 750,000 acres of National Forest System lands, 585,486 acres of which are within the Teton Wilderness. The area is extremely beautiful with the Teton Range in full view from most of the District. There is an abundance of wildlife such as moose, elk, mule deer, grizzly bear, black bear, and trumpeter swan.

The closest towns to Blackrock are Jackson and Dubois, each approximately 40 miles away. With a population of approximately 8000, Jackson is a full service community with shopping, hospital, movie theaters and an airport. Dubois is much smaller, with a population of 2,000, and has basic services. The nearest major city is Idaho Falls, (2 hour drive) with a population of 150,000.

