

# POLLINATORS-PLANTS-PEOPLE

## A PARTNERSHIP FOR LIFE



**BUMBLEBEE**



**CARPENTERBEE**

**SWEAT BEE**

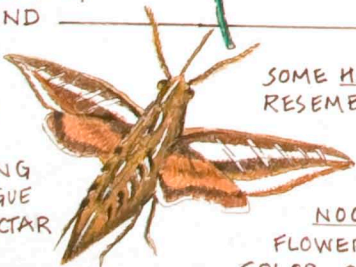
BUMBLEBEES, CARPENTER BEES, AND SWEAT BEES ARE "BUZZ POLLINATORS." THEY CLASP THE FLOWERS ANTHERS IN THEIR JAWS AND VIBRATE THE FLOWERS WITH THEIR POWERFUL THORACIC FLIGHT MUSCLES RELEASING THE POLLEN. THIS "SONICATION" POLLINATION IS ESPECIALLY EFFECTIVE FOR TOMATOES, EGGPLANT, WATERMELON, BLUEBERRIES, RASPBERRIES, PEPPERS, ALFALFA, AND SOME ORCHARD CROPS LIKE APPLES AND CHERRIES.

**THE BUZZ POLLINATORS** ARE NATIVE TO THIS AREA.



**ORCHARD MASON BEE**  
MASON BEES ARE SPRING AND EARLY SUMMER POLLINATORS SO ARE RELIABLE FOR EARLY BLOOMING FRUIT TREES AND BERRY BUSHES.

**THE WHITE LINED SPHINX HAWK MOTH** HAS A LONG STRAW-LIKE TONGUE FOR SUCKING NECTAR FROM TUBE-LIKE FLOWERS.



**SOME HAWK MOTHS** THAT RESEMBLE HUMMING BIRDS IN BEHAVIOR, VISIT FLOWERS DURING THE DAY. **NOCTURNAL MOTHS** VISIT FLOWERS THAT ARE FALE IN COLOR OR GIVE OFF A SCENT AT NIGHT.

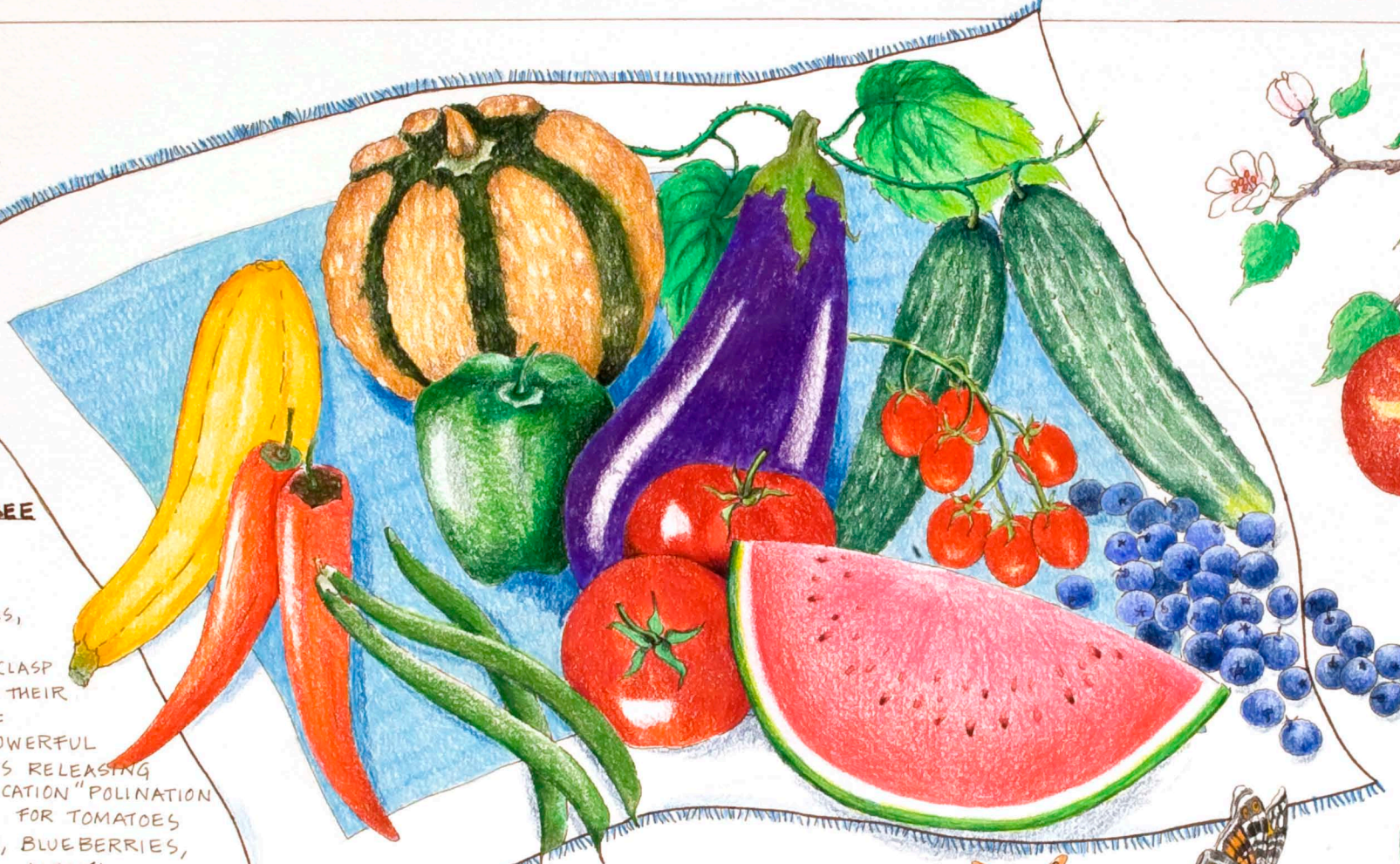
**HUMMINGBIRDS** VISIT PLANTS THAT HAVE TUBULAR RED, YELLOW OR ORANGE FLOWERS. THEIR FUZZY, DOWNY HEAD FEATHERS PICK UP THE POLLEN AND DISPERSE IT AMONG THE BLOSSOMS.



**BUTTERFLIES** CANNOT HOVER OR FEED WHILE FLYING. THEY FAVOR AND HELP POLLINATE FLOWERS THAT CAN SERVE AS A STURDY LANDING BASE.



**THE HONEY BEE** WAS BROUGHT TO NORTH AMERICA BY THE EARLY SETTLERS, IT IS A NATIVE OF ASIA AND THE MID-EAST AND HAS BECOME NATURALIZED ON EVERY CONTINENT EXCEPT ANTARCTICA.

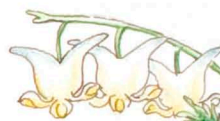


**BETLES, ANTS, WASPS AND FLIES** ARE ALSO POLLINATORS



**HOVERFLY**

SOME OF YOUR FAVORITE WILD FLOWERS DEPEND ON BEETLES AND ANTS FOR POLLINATING.



**DUTCHMAN'S BREECHES**



**POND LILY**



**JACK-IN-THE-PULPIT**

