

# Monarch Magic

## Chequamegon-Nicolet National Forest

### 2010 Accomplishments

This project was initiated in 2010 to inform the public about one of nature's most remarkable phenomena - the Monarch Butterfly. Artist Erica Fielder's watercolor captures the story of this amazing insect – its life cycle and epic journey. The original painting was digitally imaged at 600 dpi onto sheets of low acid paper and printed with UV resistant inks. The sheets were then embedded in fiberglass resin. Four interpretive exhibits with frames and pedestals were installed near native pollinator gardens at National Forest visitor centers and offices.

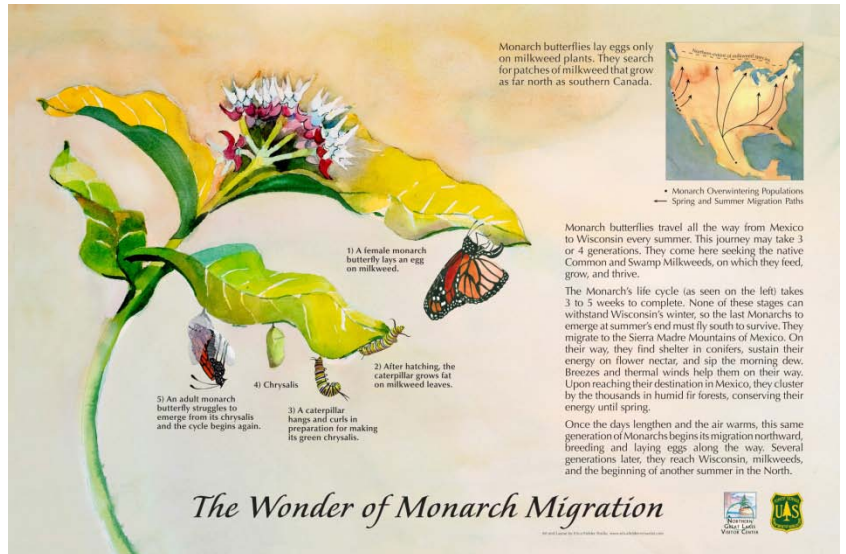


Figure 1. Original artwork prepared by Erica Fielder Studios, California, illustrates the life cycle and epic journey of Monarchs.

It is anticipated that over 150,000 visitors will have an opportunity to view these exhibits each year. Additionally, varieties of native milkweeds were planted in gardens to draw the Monarch Butterflies in for closer viewing and provide the host plants needed by caterpillars and adults.



Figure 2. Mark Jaunzems, Washburn Ranger District, installs new Monarch wayside exhibit by native pollinator gardens.

Year Awarded: initial award in 2010

Project completion: 2010

Report number: 1 of 1

Expenditures (through 10/20/2010):  
\$5,345

▪ **Total funding \$5345, total expended \$5,345;**  
▪ **\$0 remaining**

Partners/Contractors/Coop: Erica Fielder Studios, Best Exhibits, Pannier Graphics

Contact Person & phone number:  
Linda R. Parker 715-685-9983



**Chequamegon-Nicolet  
National Forest**  
1170 4<sup>th</sup> Avenue South  
Park Falls, WI 54552