

Idaho Panhandle National Forests- Developing a Native Plant Material Procurement Plan & Establishing a Supply of Site-Appropriate Seeds & Cuttings

2010 Accomplishments

Although production and use of site-appropriate conifer seedlings have been widely-accepted for decades within the Forest Service, the use of other native plant materials in restoration projects, particularly site-appropriate forbs and shrubs, is still relatively new territory for many resources within our agency.

The Idaho Panhandle National Forests (IPNF) wants to work towards incorporating site-appropriate, native plant materials into our projects in the future. This multi-tiered project should help us along that path. First, the IPNF began development of both a native plant materials procurement plan, as well as a new revegetation management plan, which will help build the foundation for a new era in native plant restoration.

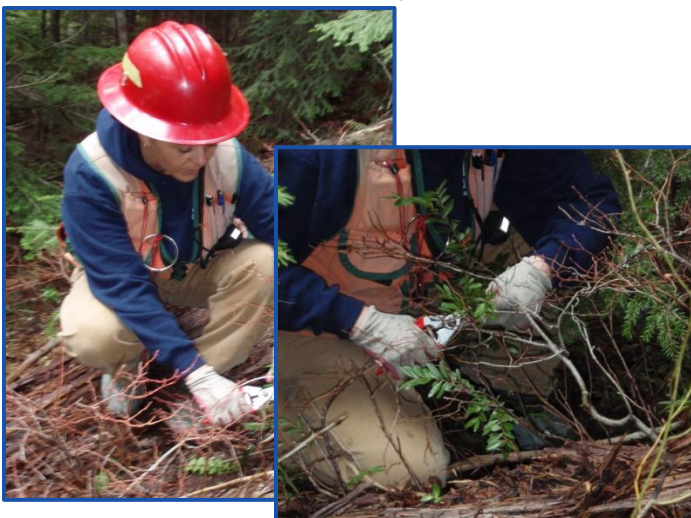
Second, as a result of recent large fires and declining budgets, some additional work to re-invigorate the seed bank for the IPNF was necessary. Some of the remaining seed in storage will be germination tested. Next, as part of an effort to implement a rotating cycle of collection and grow-out/increase for forbs and grasses suited to seed production, employees across all three zones of the IPNF began collecting seed from five grass, six forb, and two shrub species located at various elevations, aspects, and within different hydrologic basins. This seed will be cleaned, processed, and either stored or grown out for increase at the Coeur d'Alene Nursery (CDAN).

Lastly, many shrub species well suited to restoration reproduce easily via cuttings. As a means of obtaining significant quantities of not only suitable species, but also individuals with genetics better suited to different sites, IPNF employees began collecting cuttings of nine different shrubs, all from varied elevations, aspects, and hydrologic basins. These cuttings were processed and grown out by CDAN to be placed in long-term hedgerows, which will provide a fast, efficient method for plant production when a restoration or rehabilitation need arises on the forest.

During 2011, the IPNF will finalize new Native Plant Materials Procurement and Revegetation plans and will continue to coordinate with the Region 1 Geneticist and CDAN. During 2011 and 2012, continued collection, grow out and increase will occur at CDAN. Site-appropriate cuttings and seeds may be available by September 2011.



Six months later... Although surplus from the IPNF hedgerow needs, these site-appropriate, vigorous native seedlings produced from cuttings are now ready for planting into the Lightning Creek Restoration project area. October 7, 2010



Forest Service employee collecting hardwood cuttings of *Paxistima myrsinites*, for the new IPNF Native Plant Materials hedgerow. April 14, 2010.

<i>Year Project Initiated:</i>	2010
<i>Project completion:</i>	2012
<i>Report number:</i>	1 of 3
<i>Expenditures (through 09/2010):</i>	~ \$30,233
<i>FY 2010 Partners/Collaborators:</i>	
	Region 1 Native Plant Materials Grant
	Region 1 Geneticist
	Coeur d'Alene Nursery
<i>Contact Person & phone number:</i>	
	Jennifer Costich-Thompson 208-265-6626



Idaho Panhandle National Forests
S.O. – ATTN: Art Zack
3815 Schreiber Way
Coeur d'Alene, ID 83815