

Genecology of native grasses for habitat restoration phase I: seed collections of *Poa secunda* and *Elymus elmoides* for common garden studies

2007 Accomplishments

As part of a larger study this project was initiated in the summer 2007 to obtain seed collections of *P. secunda* (Figure 1) and *E. elmoides* from populations located throughout the Great Basin and surrounding areas. In total, over 300 collections of *P. secunda* and 150 collections of *E. elmoides* were made, the majority of which were funded by this award (Figure 2). The *P. secunda* seed collections have been cleaned and will be planted in common gardens located at Central Ferry WA, Powell Butte OR, and Fallon, NV in Spring 2008. The *E. elmoides* collections are currently being cleaned and will be planted in the Spring of 2009 after a second season of seed collection.

The goal of this larger project is to define seed movement guidelines for land managers that can guide the use of these important rangeland species in restoration activities. Once seed zones have been delineated, seed from this project will be used as foundation seed for grow-outs of locally adapted germplasm releases for specific regions.



Figure 1. *Poa secunda* growing at Horse Rock Ridge BLM Natural Resource Area in western Oregon. Photo: Matt Horning

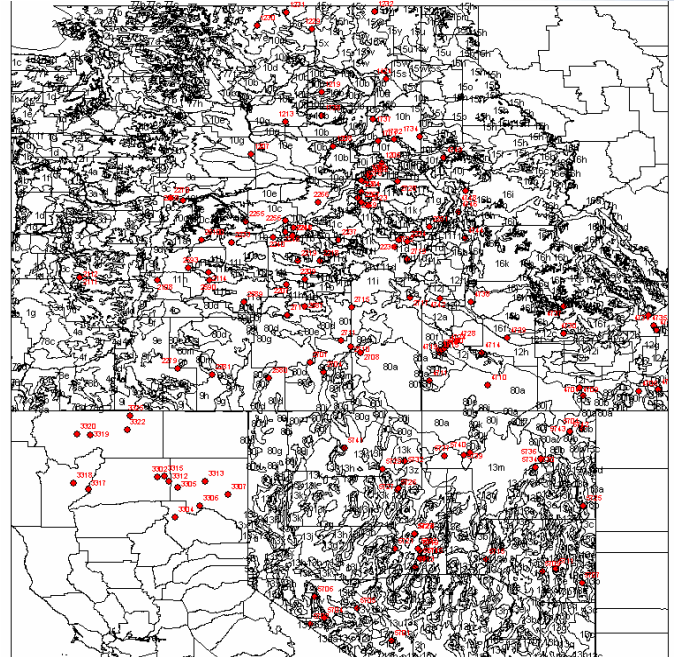


Figure 2. Locations of *P. secunda* collections included in this study.

Year Awarded: 2007

Project completion: 2007

Report number: 1 of 1

Expenditures (through 10/2007):

FY07 funding \$19,000, expend. \$16,898.71;000

\$2101.29 remaining

▪**Total funding \$19,000, total expend \$16,898.71;**

▪**\$2101.29 total remaining**

Partners/Contractors/Coop: Brad St. Clair and Rich Cronn USDA PNW Research Station, RC Johnson USDA ARS, Nancy Shaw USFS RMRS, Steve Perkins USDA NRCS Fallon PMC, Vicky Erickson USFS R6, Twyla Miller and Judy Perkins USFS R5, Berta Youtie Eastern Oregon Stewardship Services, Marvin Butler OSU COARC

Contact Person & phone number:

Matt Horning 541-750-7301



Pacific Northwest Research Station

3200 SW Jefferson Way

Corvallis, OR 97331