



United States
Department of
Agriculture

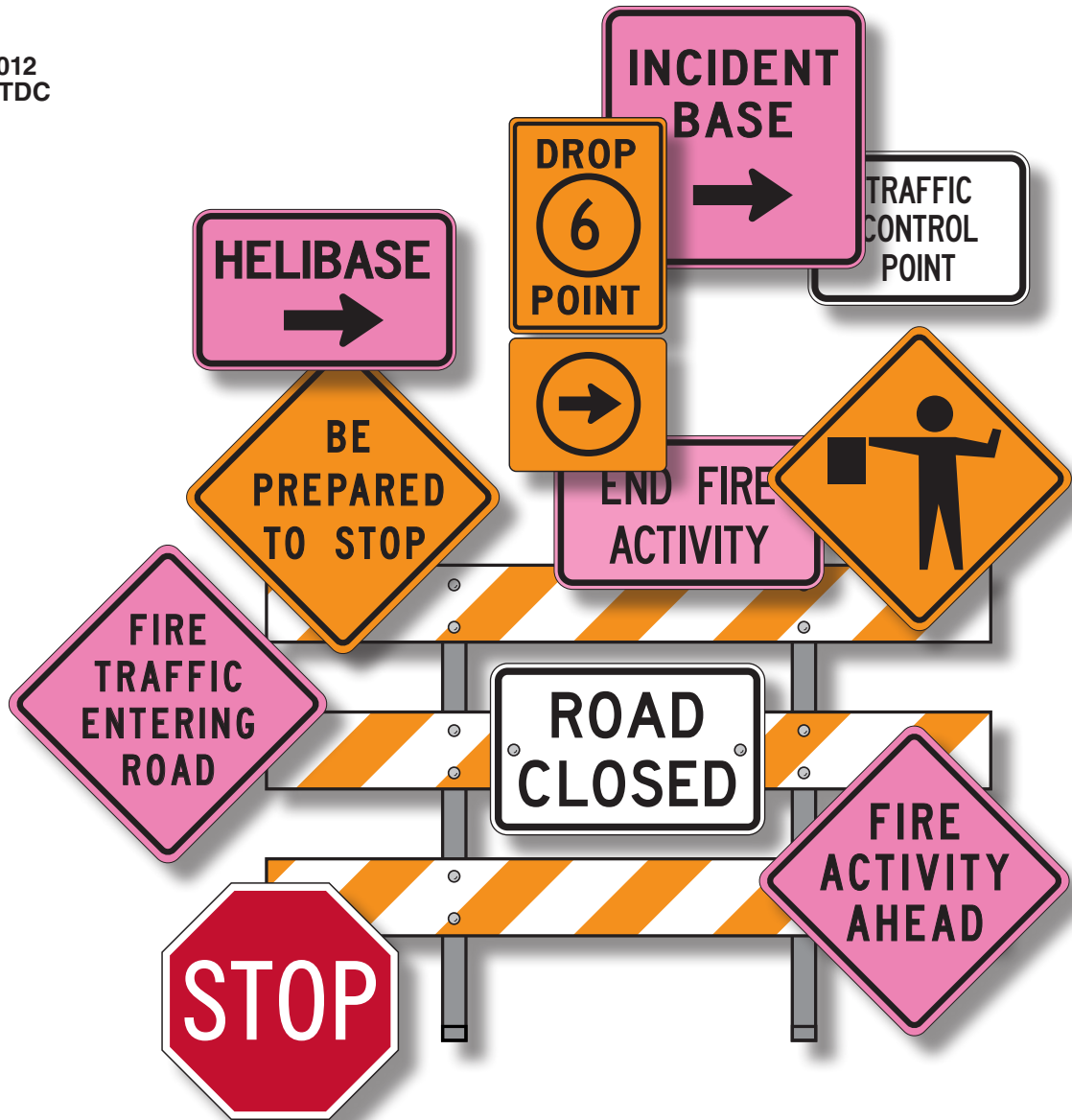
Forest Service

Technology &
Development
Program

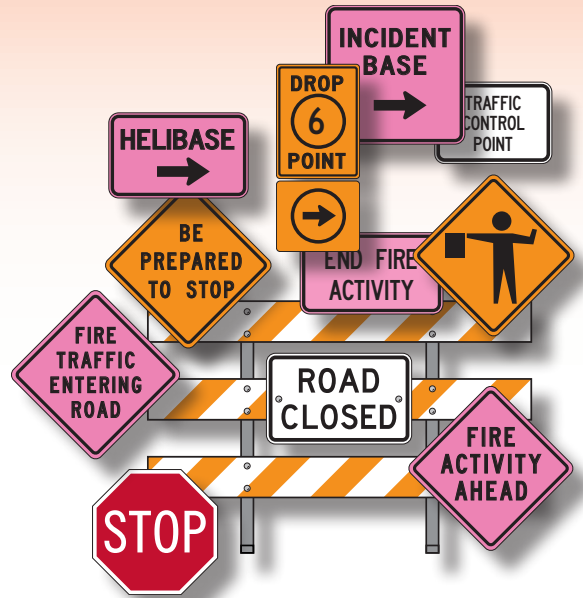
5100–Fire
Revised July 2012
1251–2821P–MTDC



Incident Sign Ordering Catalog



Incident Sign Ordering Catalog



Donna Sheehy
Professional Engineer

Ted J. Cote (Retired)
Visual Information Specialist

John R. Smith (Retired)
Project Leader

USDA Forest Service
Technology and Development Program
Missoula, MT

5E52P30—Incident Sign Installation
Guide

First printed November 2006

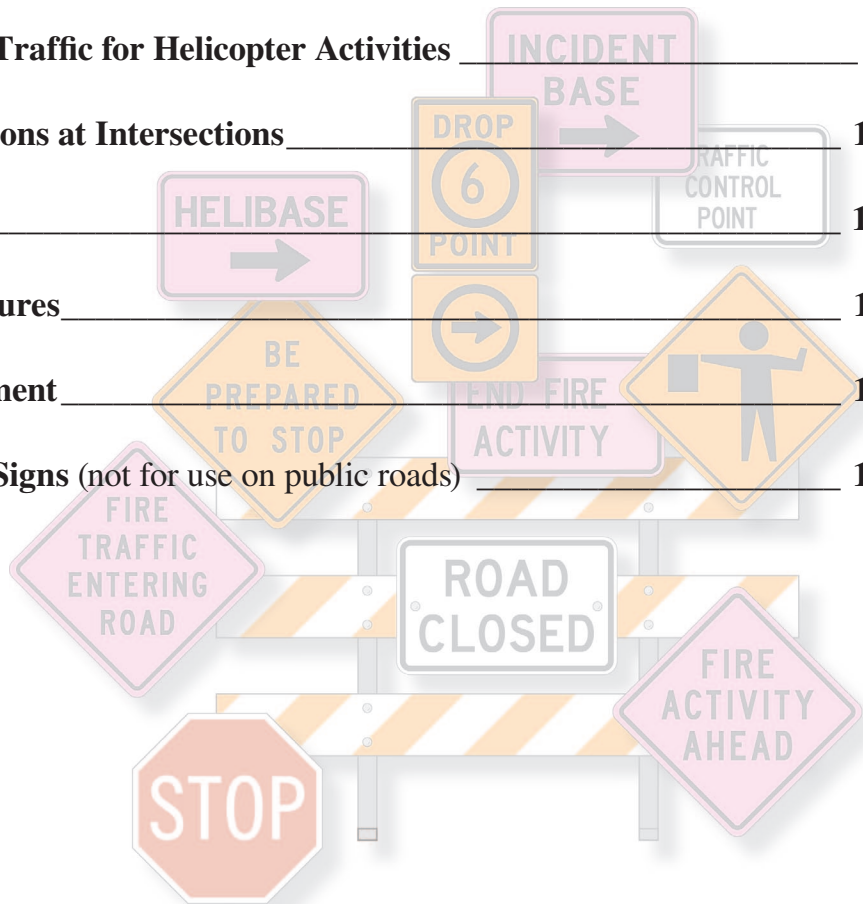
Revised July 2012

The Forest Service, United States Department of Agriculture (USDA), has developed this information for the guidance of its employees, its contractors, and its cooperating Federal and State agencies, and is not responsible for the interpretation or use of this information by anyone except its own employees. The use of trade, firm, or corporation names in this document is for the information and convenience of the reader, and does not constitute an endorsement by the Department of any product or service to the exclusion of others that may be suitable.

The U.S. Department of Agriculture (USDA) prohibits discrimination in all its programs and activities on the basis of race, color, national origin, age, disability, and where applicable, sex, marital status, familial status, parental status, religion, sexual orientation, genetic information, political beliefs, reprisal, or because all or part of an individual's income is derived from any public assistance program. (Not all prohibited bases apply to all programs.) Persons with disabilities who require alternative means for communication of program information (Braille, large print, audiotape, etc.) should contact USDA's TARGET Center at (202) 720-2600 (voice and TDD). To file a complaint of discrimination, write to USDA, Director, Office of Civil Rights, 1400 Independence Avenue, S.W., Washington, D.C. 20250-9410, or call (800) 795-3272 (voice) or (202) 720-6382 (TDD). USDA is an equal opportunity provider and employer.

Contents

Contents	ii
Introduction	1
How To Order Signs	1
Incident Management Activities at Intersections	2
Approaching and Leaving Fire Activity Zones	4
Initial Attack Engine or Crew Operations Along a Roadway	6
Flagging Operations To Stop Traffic for Helicopter Activities	8
Intermittent Flagging Operations at Intersections	10
Drop Points	12
Staffed Emergency Road Closures	14
Traffic Cone and Flare Placement	16
Appendix—In-Camp Traffic Signs (not for use on public roads)	18



Introduction

Incident management teams are responsible for managing all signing, including signs posted along any State, Federal, or local road open to the public. Specifically, incident commanders and agency administrators are responsible for the signs along public roads in accordance with the “Manual on Uniform Traffic Control Devices for Streets and Highways” (MUTCD). This manual is the national standard for signs and traffic control devices for roads. The MUTCD must be followed on all Federal, State, and local roads open to public travel (23 CFR 655, Subpart F).

MTDC published the “Incident Sign Installation Guide” (1251–2820P–MTDC) in 2012. The guide is designed to help incident managers use signs to promote traffic safety at incidents and to comply with State and Federal laws. Fire

program managers, incident commanders, logistics chiefs, ground support unit leaders, and incident safety officers should have a copy of this guide and use it for incident management. Fire program managers should order a supply of the signs shown in this guide so they will be readily available for locally managed incidents.

This catalog was developed to help managers procure incident management signs. This catalog’s sections correspond to the sections of the “Incident Sign Installation Guide.”

Each section of this catalog includes an ordering sheet with the corresponding sign numbers. The sheet can be copied and faxed to the sign manufacturer or sign coordinator when ordering. Minimum sizes are listed. Larger sizes may be ordered as needed.

How To Order Signs

Obtaining Signs

There are several options:

1. Signs may be available from the local, regional, or national fire caches.
2. Signs may be available from the local unit, such as a ranger district or local department of transportation office.
3. Signs may be ordered in advance. Contact your regional sign coordinator for a list of local vendors. Use the appropriate fund code for preseason purchases.
4. Signs may be ordered during the incident. Coordinate purchases of signs through the incident buying team.

Assistance

Forest and regional sign coordinators can help locate signs, sign vendors, and traffic control services, such as flagging and pilot vehicles.

When ordering signs, specify the quantity, color, substrate, text, size, and arrow direction on the order sheet.

Color and Sheeting

All warning signs are retroreflective orange. Fluorescent diamond grade sheeting is used on all warning signs for maximum visibility. Drop point signs may be ordered in engineering grade sheeting.

At the time of this publication, fluorescent pink signs are available only in a rollup sign fabric with stands. If you need rollup signs, seek the assistance of your forest or regional sign coordinator.

Substrate

The following table shows the options for sign substrates and the abbreviations that should be used on the order sheets.

Substrate	Designation on order sheets	Comments
Aluminum	AL	Common
High-Density Overlay	HDO	Weather-resistant wood material
Fiberglass	FG	Lightweight material
Corrugated Plastic	CP	Corrugated plastic media

Incident Management Activities at Intersections

Signs are used to warn approaching road users that incident traffic is entering and exiting at the intersection.

Install a warning and guide sign at each approach to the intersection. The warning sign (sign 1) attracts attention. It is the most critical sign and always takes precedence over the guide sign (sign 2).

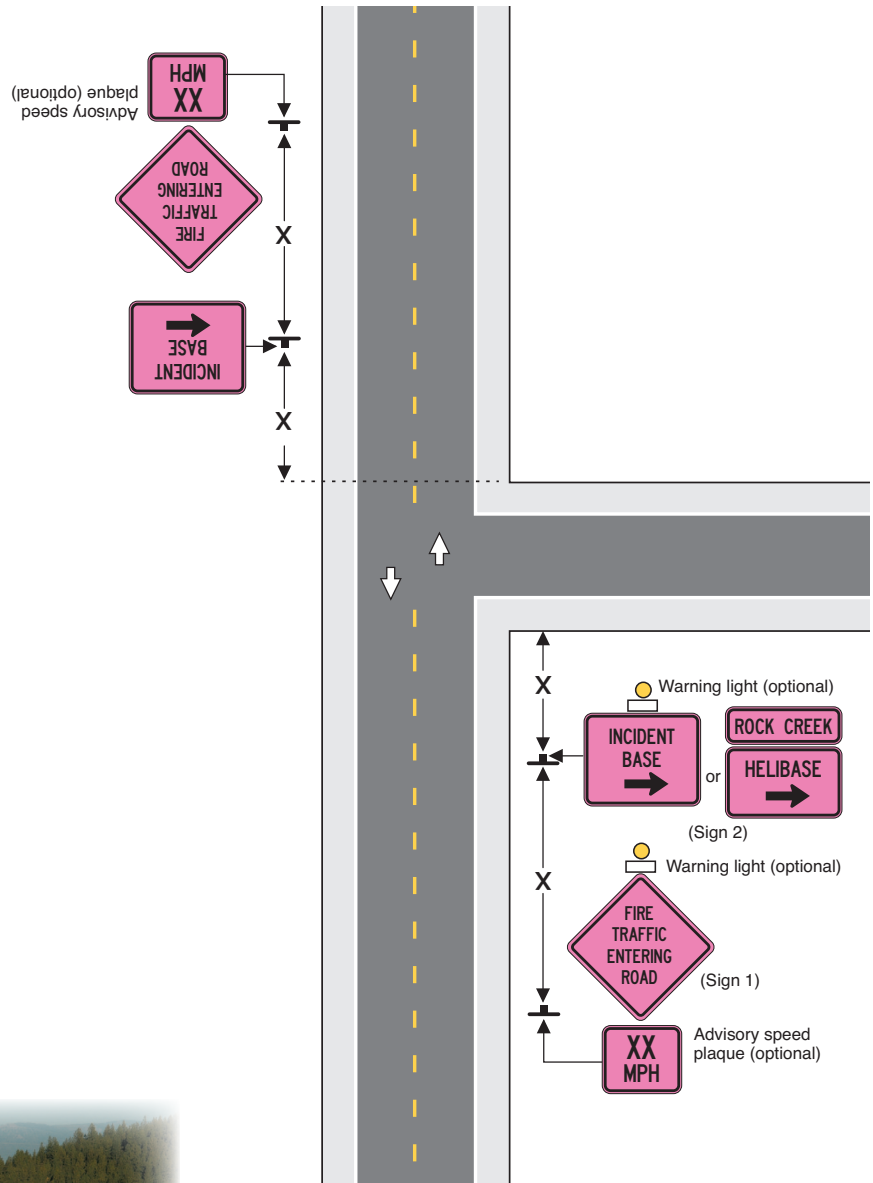
Use guide signs at critical intersections to direct incident management traffic to destinations such as:

- Incident bases
- Helibases
- Staging areas
- Helicopter bucket dip sites
- Washing stations

You need to specify the arrow direction: (L) = left, (R) = Right, (U) = Up.

When several incidents are in the same area, a nameplate may help persons locate the right incident. The name of the incident should be on a separate sign mounted on top of the guide sign.

Incident Management Activities at Intersections



X = Distances from tables 1, 2, and 3 in the Incident Sign Installation Guide



Incident Management Activities at Intersections



Warning



Advisory Speed Plaque



Guide

Sign Number	Sign Size W × H	Letter Size	Color/Sheeting Fluorescent/ Diamond Grade	Substrate* (Specify)	Quantity (Specify)
FW-8-6a	36" x 36"	5"	Orange		

Sign Number	Sign Size W × H	Letter Size	Color/Sheeting Fluorescent/ Diamond Grade	Substrate* (Specify)	Speed (Specify miles miles per hour)	Quantity (Specify)
W13-1	24" x 24"	<i>See MUTCD</i>	Orange			

Sign Number	Sign Size W × H	Letter Size	Message	Color/Sheeting Fluorescent/ Diamond Grade	Substrate* (Specify)	Quantity (Specify arrow direction)		
						←	↑	→
FG-21-1	36" x 36"	6"	INCIDENT BASE	Orange				
FG-21-1a	36" x 36"	6"	INCIDENT BASE AHEAD	Orange		<i>Arrows not required</i>		
FG-21-1b	36" x 36"	6"	SPIKE CAMP	Orange				
FG-21-3	36" x 24"	6"	WASH AREA	Orange				
FG-21-4	36" x 36"	6"	STAGING AREA	Orange				
FG-21-5	36" x 24"	6"	HELIBASE	Orange				
FG-21-6	36" x 24"	6"	FUEL	Orange				
FG-21-7	36" x 24"	6"	DIP SITE	Orange				
FG-21-7a	36" x 24"	6"	FILL SITE	Orange				
FG-21-8	54" x 36"	6"	FIRE INFORMATION AHEAD	Orange		<i>Arrows not required</i>		
FG-21-9	54" x 36"	6"	FIRE INFORMATION	Orange				
FG-21-Special	36" x 36"	6"	<i>Your message</i>	Orange				



Name Plate

Sign Number	Sign Size W × H	Letter Size	Color/Sheeting Fluorescent/ Diamond Grade	Substrate* (Specify)	Message	Quantity (Specify)
FG-21-10	36" x 12"	6"	Orange		<i>Your message</i>	

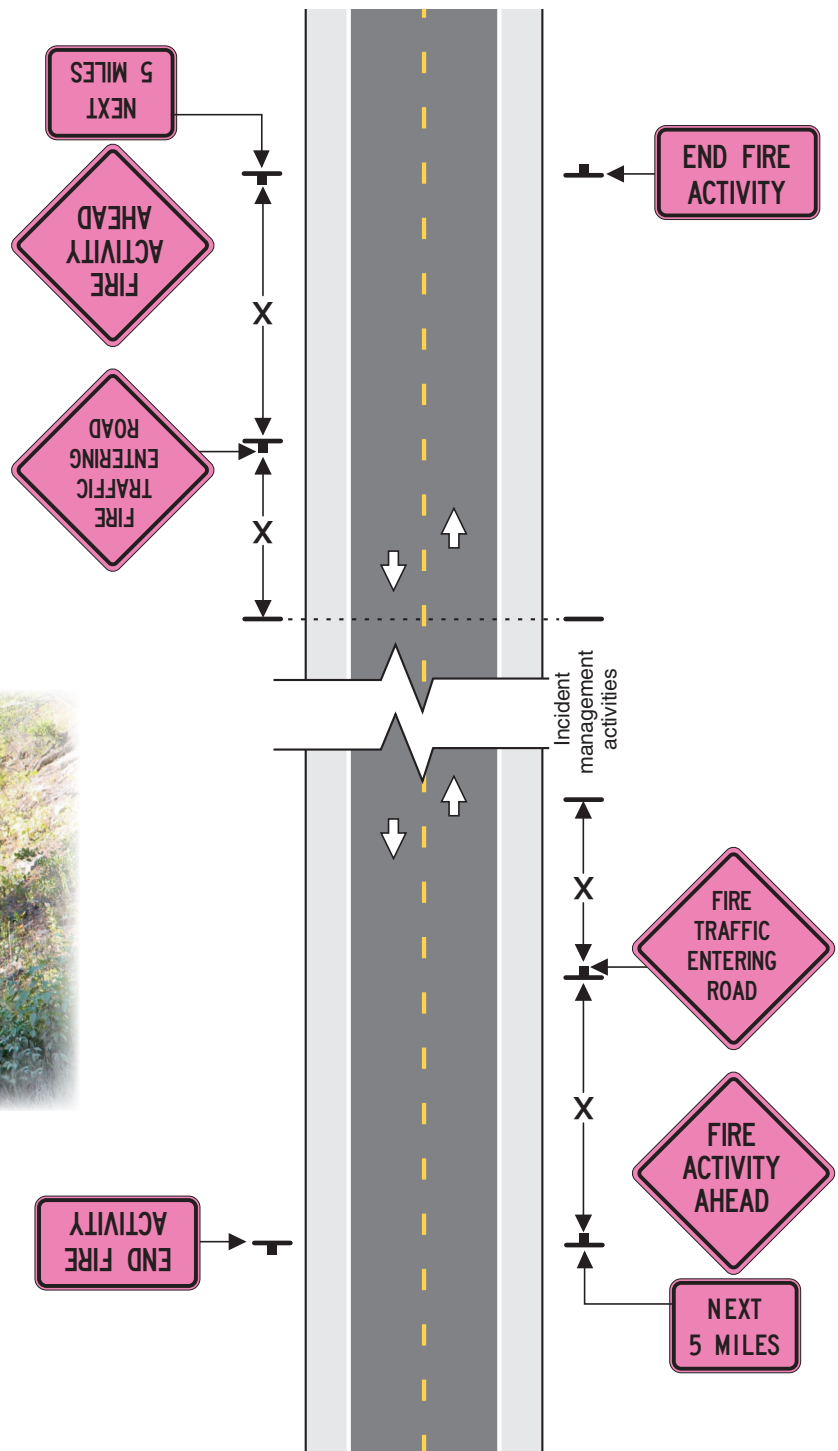
*AL—Aluminum HDO—High-Density Overlay FG—Fiberglass CP—Corrugated Plastic
 Manufacturer: All signs must meet EM-7100-15 and MUTCD specifications.

Approaching and Leaving Fire Activity Zones

Use these signs when incident management activities occur throughout an incident zone over a long section of road. Use a FIRE ACTIVITY AHEAD sign with a mileage plate indicating the length of the traffic control zone as the first sign in a series of incident management signs. Install additional FIRE ACTIVITY AHEAD and mileage signs every 5 miles if activity spans more than 5 miles. Use an END FIRE ACTIVITY sign to let road users know that they may resume normal driving.



Approaching and Leaving Fire Activity Zones



Approaching and Leaving Fire Activity Zones



Warning

Sign Number	Sign Size W × H	Letter Size	Message	Color/Sheeting Fluorescent/ Diamond Grade	Substrate* (Specify)	Quantity (Specify)
FW-21-8	36" x 36"	6"	FIRE ACTIVITY AHEAD	Orange		
FW-8-6a	36" x 36"	5"	FIRE TRAFFIC ENTERING ROAD	Orange		
FW-25-1	36" x 36"	5"	SMOKE LIMITED VISIBILITY	Orange		
FW-25-2	36" x 36"	6"	NO STOPPING	Orange		
FW-25-3	36" x 36"	5"	ROCK AND ROLLING DEBRIS	Orange		
FW-25- Special	36" x 36"	6"	<i>Your message</i>	Orange		



**Supplemental
Plaque**

Sign Number	Sign Size W × H	Letter Size	Color/Sheeting Fluorescent/ Diamond Grade	Substrate* (Specify)	Miles (Specify)	Quantity (Specify)
W7-3a	30" x 24"	<i>See MUTCD</i>	Orange			



Warning

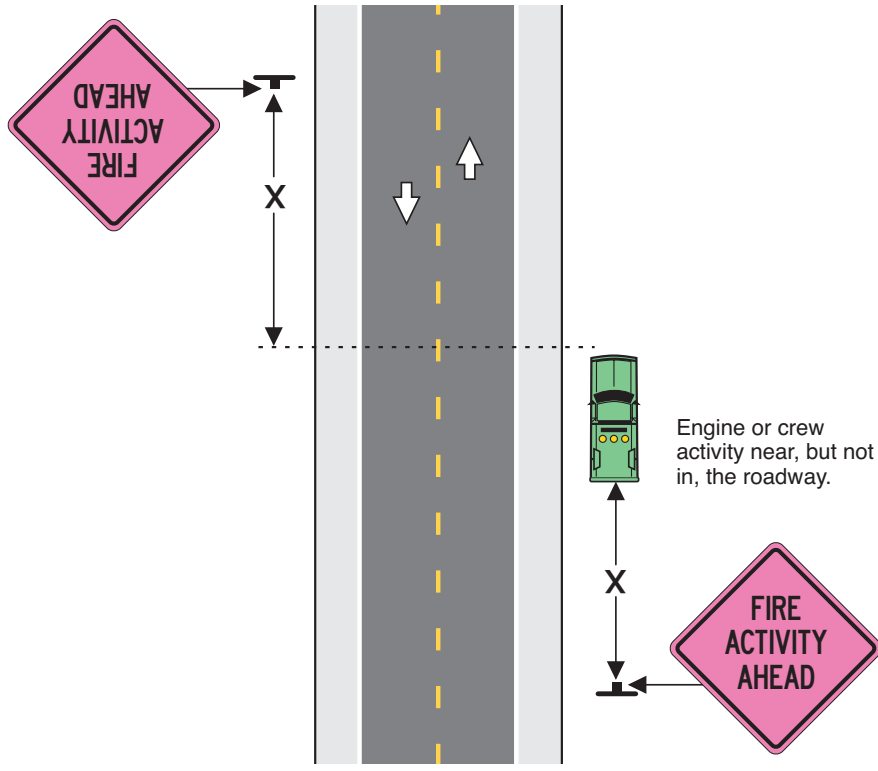
Sign Number	Sign Size W × H	Letter Size	Color/Sheeting Fluorescent/ Diamond Grade	Substrate* (Specify)	Quantity (Specify)
FG-20-5	36" x 18"	6"	Orange		

*AL—Aluminum HDO—High-Density Overlay FG—Fiberglass CP—Corrugated Plastic
Manufacturer: All signs must meet EM-7100-15 and MUTCD specifications.

Initial Attack Engine or Crew Operations Along a Roadway

FIRE ACTIVITY AHEAD signs should be used when initial attack engines or crews are near a roadway. The FIRE ACTIVITY AHEAD sign may be omitted if the incident vehicle or activity is behind a barrier, more than 24 inches behind a curb, or more than 15 feet from the edge of any roadway. For operations lasting less than 30 minutes, signs are not required if the incident vehicle uses activated high-intensity rotating, flashing, oscillating, or strobe lights.

Initial Attack Engine or Crew Operations Along a Roadway



Initial Attack Engine or Crew Operations Along a Roadway



Warning

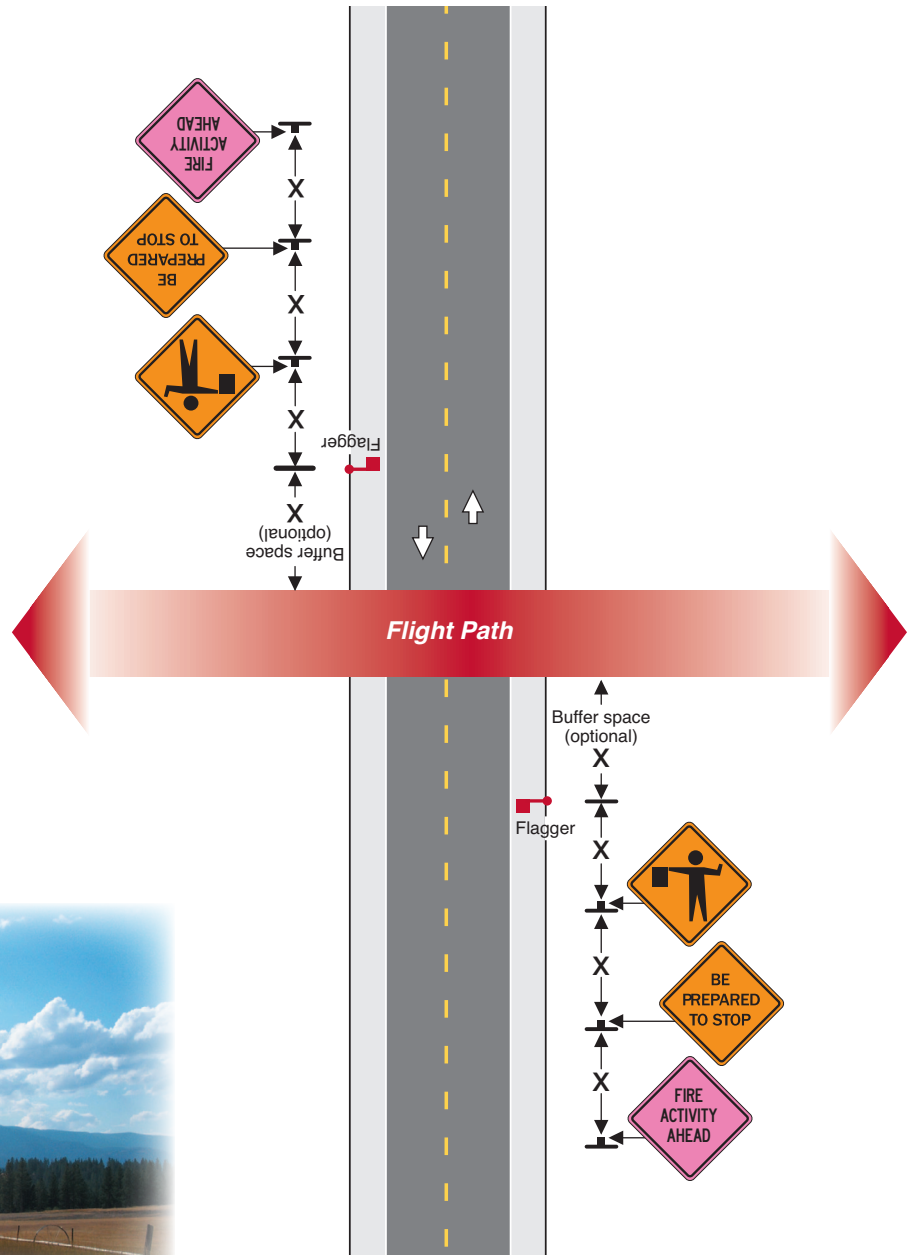
Sign Number	Sign Size W x H	Letter Size	Color/Sheeting Fluorescent/ Diamond Grade	Substrate* (Specify)	Quantity (Specify)
FW-21-8	36" x 36"	6"	Orange		

***AL—Aluminum HDO—High-Density Overlay FG—Fiberglass CP—Corrugated Plastic**
Manufacturer: All signs must meet EM-7100-15 specifications.

Flagging Operations To Stop Traffic for Helicopter Activities

Intermittent flagging operations may be needed to stop traffic when helicopter operations affect road users. Use the BE PREPARED TO STOP and the flagger symbol signs during all flagging operations. The advance warning sign FIRE ACTIVITY AHEAD should be visible at all times, even when flagging operations are suspended.

Flagging Operations To Stop Traffic for Helicopter Activities



Flagging Operations To Stop Traffic for Helicopter Activities



Warning

Sign Number	Sign Size W × H	Letter Size	Color/Sheeting Fluorescent/ Diamond Grade	Substrate* (Specify)	Quantity (Specify)
FW-21-8	36" x 36"	6"	Orange		



Warning

Sign Number	Sign Size W × H	Letter Size	Color/Sheeting Fluorescent/ Diamond Grade	Substrate* (Specify)	Quantity (Specify)
W3-4	36" x 36"	See MUTCD	Orange		



Warning

Sign Number	Sign Size W × H	Letter Size	Color/Sheeting Fluorescent/ Diamond Grade	Substrate* (Specify)	Quantity (Specify)
W20-7a	36" x 36"	N/A	Orange		



Warning

Sign Number	Sign Size W × H	Letter Size	Color/Sheeting Fluorescent/ Diamond Grade	Substrate* (Specify)	Quantity (Specify)
FW-25-4	36" x 36"	6"	Orange		

*AL—Aluminum HDO—High-Density Overlay FG—Fiberglass CP—Corrugated Plastic
 Manufacturer: All signs must meet EM-7100-15 and MUTCD specifications.

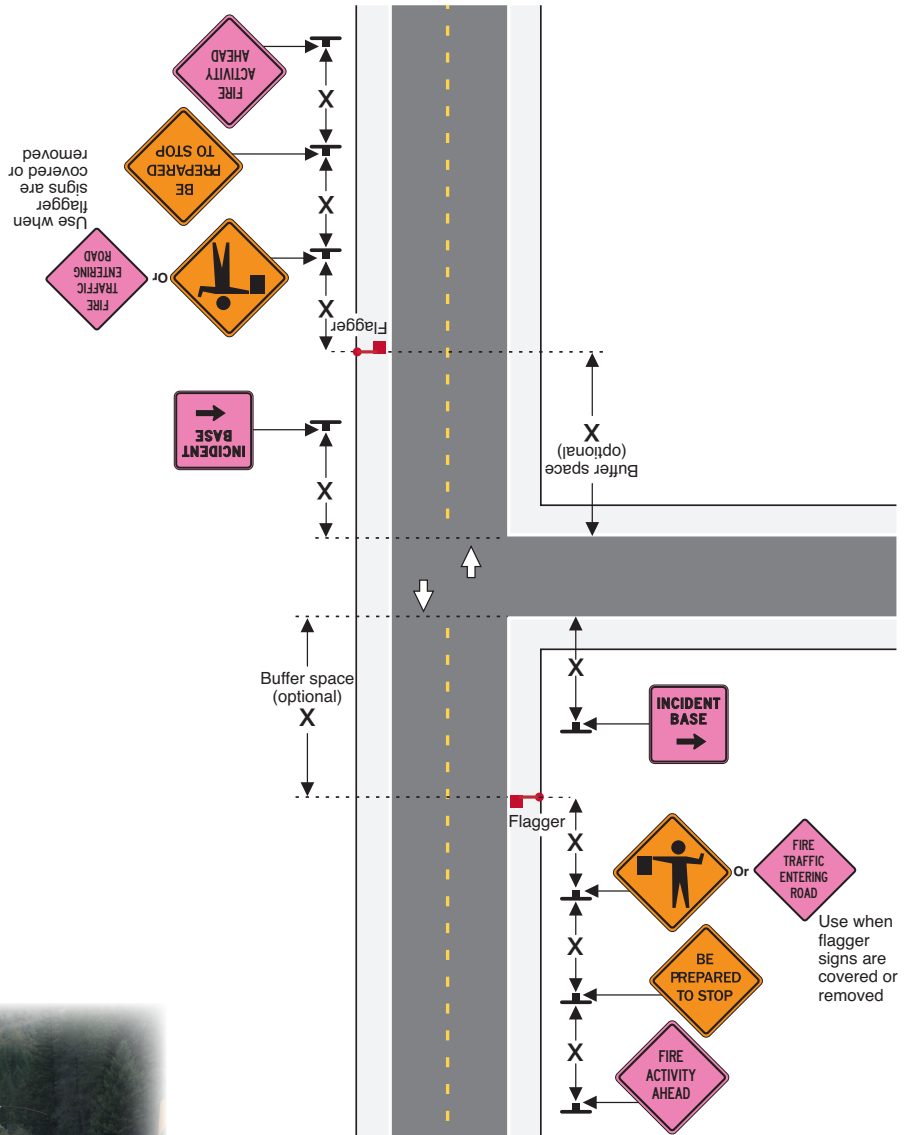
Intermittent Flagging Operations at Intersections

Intermittent flagging operations may occur only during shift changes or at other critical times of the incident operation. Use the BE PREPARED TO STOP and the flagger symbol signs during all flagging operations. The advance warning sign FIRE ACTIVITY AHEAD should be visible at all times, even when flagging operations are suspended.

The FIRE TRAFFIC ENTERING ROAD sign can be used when flagging operations are not in progress.

Use guide signs at critical intersections to direct incident management traffic. You must specify arrow direction when ordering guide signs.

Intermittent Flagging Operations at Intersections



Intermittent Flagging Operations at Intersections



Warning

Sign Number	Sign Size W × H	Letter Size	Color/Sheeting Fluorescent/ Diamond Grade	Substrate* (Specify)	Quantity (Specify)
FW-21-8	36" x 36"	6"	Orange		



Warning

Sign Number	Sign Size W × H	Letter Size	Color/Sheeting Fluorescent/ Diamond Grade	Substrate* (Specify)	Quantity (Specify)
W3-4	36" x 36"	See MUTCD	Orange		



Warning

Sign Number	Sign Size W × H	Letter Size	Color/Sheeting Fluorescent/ Diamond Grade	Substrate* (Specify)	Quantity (Specify)
W20-7a	36" x 36"	N/A	Orange		



Warning

Sign Number	Sign Size W × H	Letter Size	Color/Sheeting Fluorescent/ Diamond Grade	Substrate* (Specify)	Quantity (Specify)
FW-8-6a	36" x 36"	5"	Orange		



Guide

(Use page 3 for ordering additional guide signs.)

Sign Number	Sign Size W × H	Letter Size	Message	Color/Sheeting Fluorescent/ Diamond Grade	Substrate* (Specify)	Quantity (Specify arrow direction)		
						←	↑	→
FG-21-1	36" x 36"	6"	INCIDENT BASE	Orange				

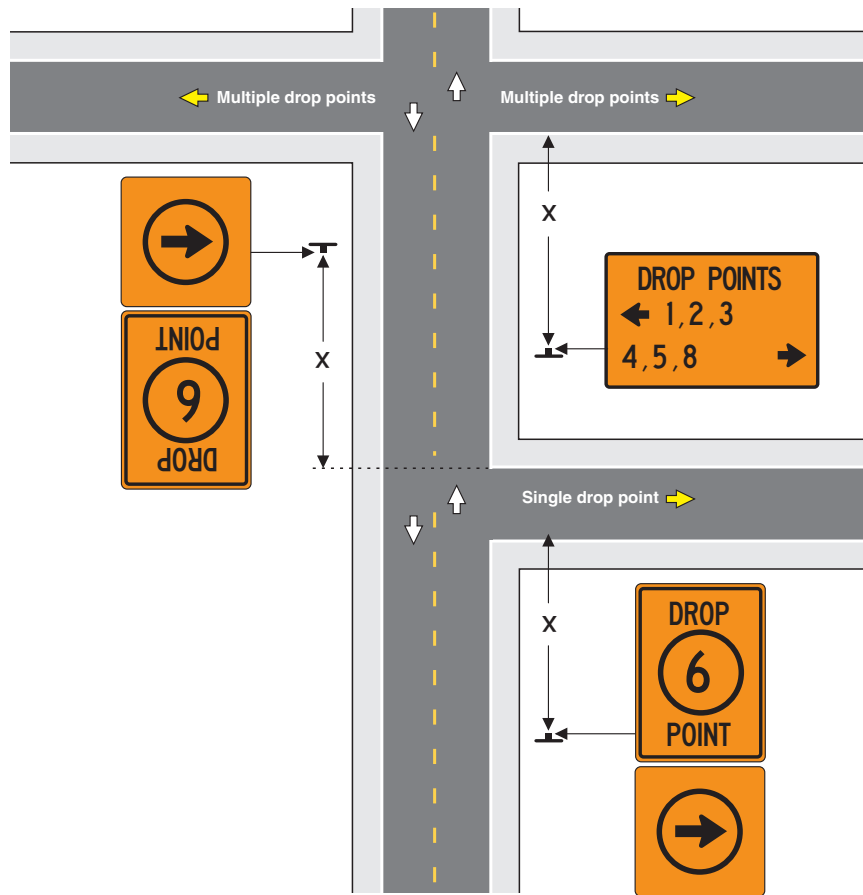
*AL—Aluminum HDO—High-Density Overlay FG—Fiberglass CP—Corrugated Plastic
 Manufacturer: All signs must meet EM-7100-15 and MUTCD specifications.

Drop Points

DROP POINT signs are guide signs that direct incident personnel to specific destinations where they can drop off or pick up supplies and crews. Use the single DROP POINT sign for individual drop points. Use the multiple DROP POINT sign to direct traffic to several drop points from a single intersection.

DROP POINT signs are made from corrugated plastic. DROP POINT signs may be ordered blank or with numbers. Sticker or static cling numbers may be ordered that can be attached in the field. Indicate the type of numbers that are needed. Large permanent markers also may be used to write numbers on the signs. Black electrical tape may also be used to make the numbers.

Drop Points





Guide

Sign Number	Sign Size W × H	Letter Size	Color/Sheeting	Quantity (Specify)
FG-35	12" x 12"	N/A	Orange/Engineering Grade	



Guide

Sign Number	Sign Size W × H	Letter Size	Color/Sheeting	DROP POINT Number*		Quantity (Specify)
				(Specify)	(Circle One)	
FG-36a	12" x 18"	2"	Orange/ Engineering Grade		Blank Sticker Static Cling	



Guide

Sign Number	Sign Size W × H	Letter Size	Color/Sheeting	DROP POINT Number*		Quantity (Specify)
				(Specify)	(Circle One)	
FG-36	24" x 18"	2"	Orange/ Engineering Grade		Blank Sticker Static Cling	



Guide

Sign Number	Sign Size W × H	Letter Size	Color/Sheeting	MILE MARKER Number*		Quantity (Specify)
				(Specify)	(Circle One)	
FD-10-3	6" x 12"	2"	Orange/ Engineering Grade		Blank Sticker Static Cling	

All DROP POINT signs are constructed on 4- to 5-mm corrugated plastic substrate.

*DROP POINT and MILE MARKER signs may be ordered blank or with numbers. Sticker or static cling numbers may be ordered that can be attached in the field. Indicate the type of numbers that are needed.

Large permanent markers also may be used to write numbers on the signs.

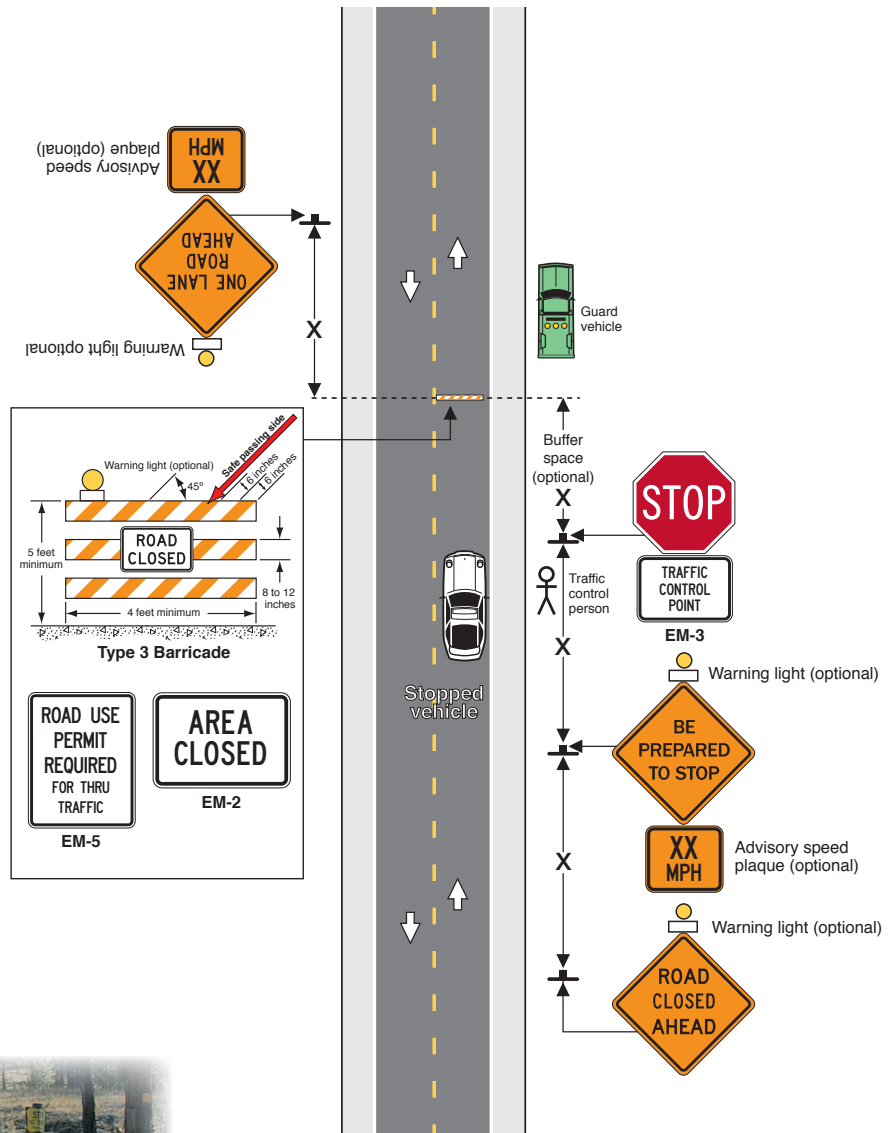
Manufacturer: All signs must meet EM-7100-15 and MUTCD specifications.

Staffed Emergency Road Closures

Official traffic control points are established to stop traffic, limit congestion, expedite emergency traffic, exclude unauthorized vehicles, or protect the public. Use the TRAFFIC CONTROL POINT sign, in conjunction with a standard STOP sign, to designate an official traffic control point. Install the signs at the point where traffic must stop to be checked. Mount the TRAFFIC CONTROL POINT sign directly below the STOP sign.

Use appropriate closure signs on the barricade.

Staffed Emergency Road Closures



Staffed Emergency Road Closures



Warning

Sign Number	Sign Size W × H	Letter Size	Message	Color/Sheeting Fluorescent/ Diamond Grade	Substrate* (Specify)	Quantity (Specify)
W20-3	36" x 36"	See MUTCD	ROAD CLOSED AHEAD	Orange		
W20-4	36" x 36"	See MUTCD	ONE LANE ROAD AHEAD	Orange		
W3-4	36" x 36"	See MUTCD	BE PREPARED TO STOP	Orange		



Advisory
Speed Plaque

Sign Number	Sign Size W × H	Letter Size	Color/Sheeting Fluorescent/ Diamond Grade	Substrate* (Specify)	Speed (Specify miles per hour)	Quantity (Specify)
W13-1	24" x 24"	See MUTCD	Orange			



Regulatory

Sign Number	Sign Size W × H	Letter Size	Color/Sheeting	Substrate* (Specify)	Quantity (Specify)
R1-1	30" x 30"	See MUTCD	White on Red/ Type III		



Regulatory

See page 14.

Sign Number	Sign Size W × H	Letter Size	Color/Sheeting	Substrate* (Specify)	Quantity (Specify)
EM-2	30" x 24"	See MUTCD	Black on White/ Type III		
EM-3	30" x 24"	See MUTCD	Black on White/ Type III		
EM-5	24" x 30"	See MUTCD	Black on White/ Type III		



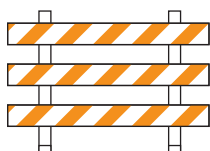
Regulatory

Sign Number	Sign Size W × H	Letter Size	Color/Sheeting	Substrate* (Specify)	Quantity (Specify)
R11-2	48" x 30"	See MUTCD	Black on White/ Type III		






Regulatory

Sign Number	Sign Size W × H	Letter Size	Color/Sheeting	Substrate* (Specify)	Quantity (Specify)
R11-4a	60" x 30"	See MUTCD	Black on White/ Type III		



Regulatory

Sign Number	Length	Letter Size	Color/Sheeting	Substrate* (Specify)	Quantity (Specify)
Type 3 Barricade	4'	N/A	Orange on White/ Type III		  

*AL—Aluminum HDO—High-Density Overlay FG—Fiberglass CP—Corrugated Plastic
Manufacturer: All signs must meet EM-7100-15 and MUTCD specifications.

Traffic Cone and Flare Placement

Traffic cones and flares can help define the incident area and provide another level of visibility. Cones and flares should be placed while facing oncoming traffic at all times.

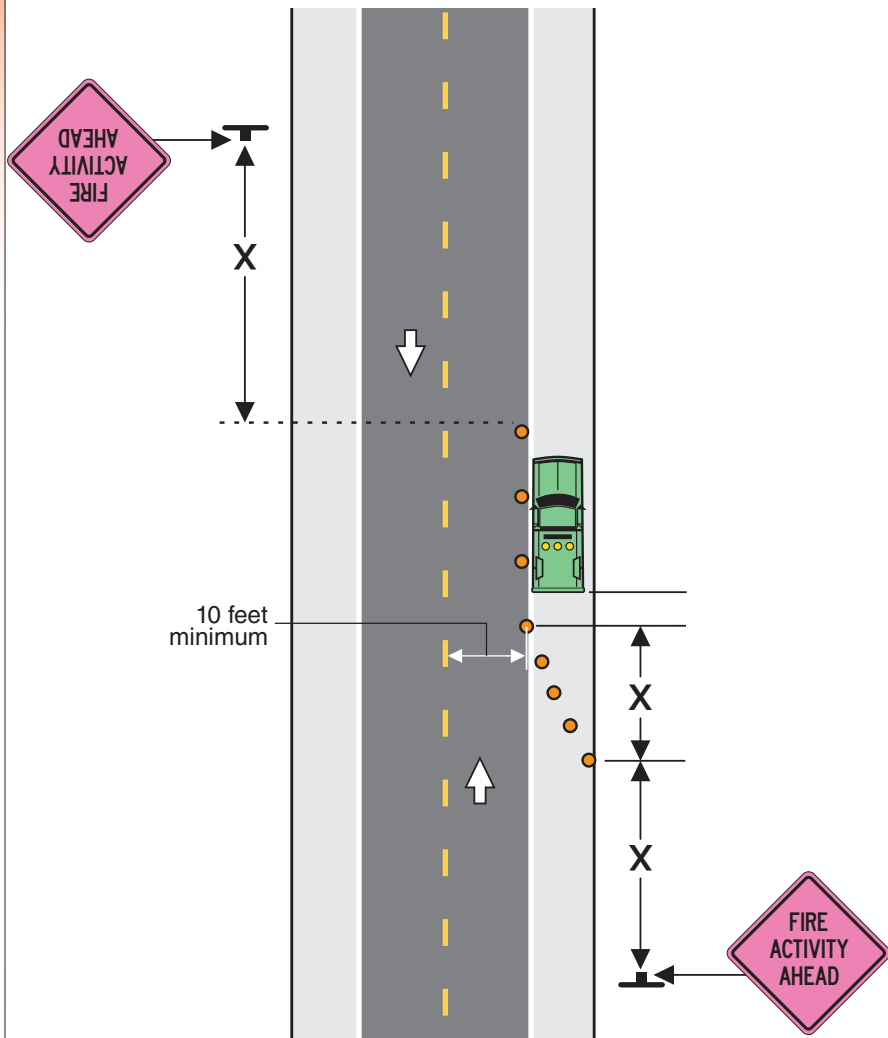
Wear high-visibility safety apparel that meets the Performance Class 2 or 3 requirements of the American National Standards Institute/International Safety Equipment Association (ANSI/ISEA) 107-2004 when placing cones or flares.

Place a FIRE ACTIVITY AHEAD sign before placing cones or flares.

Use a lookout for added safety if traffic is heavy. Also take into consideration weather, sight distance, and any visual obstructions such as hills and curves.

If using flares, ignite the flares while standing on the shoulder before deploying in traffic.

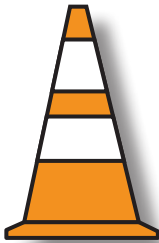
Traffic Cone and Flare Placement



Traffic Cone and Flare Placement



Cone Size	Color	Use	Quantity (specify)
18"	Orange	Daytime, roads ≤ 40 miles per hour	
28"	Orange	Daytime, roads ≤ 40 miles per hour	
36"	Orange	Daytime roads ≤ 40 miles per hour	



Cone Size	Color	Use	Quantity (specify)
28"	Orange with retroreflective collar	Nighttime, roads ≥ 45 miles per hour or greater visibility	
36"	Orange with retroreflective collar	Nighttime, roads ≥ 45 miles per hour or greater visibility	

Manufacturer: All signs must meet EM-7100-15 and MUTCD specifications.

Appendix—In-Camp Traffic Signs (not for use on public roads)



Regulatory

Sign Number	Sign Size W × H	Letter Size	Color/Sheeting	Substrate* (Specify)	Quantity (Specify)
R1-1	24" x 24"	<i>See MUTCD</i>	White on Red/ Type III		



Regulatory

Sign Number	Sign Size W × H	Letter Size	Color/Sheeting	Substrate* (Specify)	Quantity (Specify)
FR5-1	24" x 24"	6"	White on Red/ Type III		



Regulatory

Sign Number	Sign Size W × H	Letter Size	Color/Sheeting	Substrate* (Specify)	Quantity (Specify)	
					Left	Right
R6-1	36" x 12"	<i>See MUTCD</i>	Black on White Type III			



Regulatory

Sign Number	Sign Size W × H	Letter Size	Color/Sheeting	Substrate* (Specify)	Quantity (Specify)	
					Left	Right
R6-2	18" x 24"	<i>See MUTCD</i>	Black on White Type III			



Regulatory

Sign Number	Sign Size W × H	Letter Size	Color/Sheeting	Substrate* (Specify)	Quantity (Specify)
R7-1	12" x 18"	<i>See MUTCD</i>	Red on White Engineering Grade		



Regulatory

Sign Number	Sign Size W × H	Letter Size	Color/Sheeting	Substrate* (Specify)	Quantity (Specify)
FR8-3	12" x 18"	2"	Red on White Engineering Grade		




Regulatory

Sign Number	Sign Size W × H	Letter Size	Color/Sheeting	Substrate* (Specify)	Quantity (Specify)
FR7-100a	12" x 18"	2"	Green on White Engineering Grade		
FR7-100-Special	12" x 18"	2"	Green on White Engineering Grade	<i>Your message</i>	

*AL—Aluminum HDO—High-Density Overlay FG—Fiberglass CP—Corrugated Plastic
 Manufacturer: All signs must meet EM-7100-15 and MUTCD specifications.

In-Camp Traffic Signs (not for use on public roads)

 Warning	Sign Number	Sign Size W × H	Letter Size	Color/Sheeting	Substrate* (Specify)	Quantity (Specify)	
						Left	Right
	OM3	12" x 36"	NA	Black on Yellow Type III			

 Regulatory
--

Sign Number	Sign Size W × H	Letter Size	Color/Sheeting	Substrate* (Specify)	Quantity (Specify)
FEM-3a	30" x 24"	3"	Black on White Engineering Grade		

 Regulatory
--

Sign Number	Sign Size W × H	Letter Size	Color/Sheeting	Substrate* (Specify)	Quantity (Specify)
FEM-3b	60" x 30"	3"	Black on White		
		24" STOP sign	White on Red Engineering Grade		

 Regulatory

Sign Number	Sign Size W × H	Letter Size	Color/Sheeting	Substrate* (Specify)	Quantity (Specify)
FR20-1	24" x 18"	4"	Black on White Engineering Grade		

 Guide

Sign Number	Sign Size W × H	Letter Size	Color/Sheeting	Substrate* (Specify)	Arrow and Symbol (Specify)	Quantity (Specify)
FG-33	18" x 24" minimum	3–5"	Orange/ Engineering Grade			

 Guide

Sign Number	Sign Size W × H	Letter Size	Color/Sheeting	Substrate* (Specify)	Quantity (Specify)
FG-34	12" x 12"	2"	Orange/ Engineering Grade		
		8"			

 Guide

Sign Number	Sign Size W × H	Letter Size	Color/Sheeting	Substrate* (Specify)	Quantity (Specify)
FG-36b	12" x 18"	2"	Orange/ Engineering Grade		

 Advisory Speed Plaque

Sign Number	Sign Size W × H	Letter Size	Color/Sheeting	Substrate* (Specify)	Speed (Specify miles per hour)	Quantity (Specify)
FW13-1	18" x 18"	See MUTCD	Orange/ Engineering Grade			

*AL—Aluminum HDO—High-Density Overlay FG—Fiberglass CP—Corrugated Plastic
 Manufacturer: All signs must meet EM-7100-15 and MUTCD specifications.

In-Camp Traffic Signs (not for use on public roads)



Guide

Sign Number	Sign Size W × H	Letter Size	Message	Color/Sheeting Engineering Grade	Substrate* (Specify)	Quantity (Specify)
FG-30a	24" x 18"	4"	ENGINE PARKING	Orange		
FG-30b	24" x 18"	4"	BUS PARKING	Orange		
FG-30c	24" x 8"	4"	CREW PARKING	Orange		
FG-30d	24" x 18"	3"	OVERHEAD PARKING	Orange		
FG-31a	24" x 18"	5"	SUPPLY	Orange		
FG-31b	24" x 18"	5"	CHECK IN	Orange		
FG-31c	24" x 18"	4"	GROUND SUPPORT	Orange		
FG-31d	24" x 18"	5"	ENTER	Orange		
FG-31e	24" x 18"	5"	EXIT	Orange		
FG-31f	24" x 18"	5"	CARGO AREA	Orange		
FG-32	24" x 18"	3–5"	<i>Your message</i>	Orange		
FG-35	12" x 12"	N/A	N/A	Orange		



Regulatory

Sign Number	Sign Size W × H	Letter Size	Message	Color/Sheeting Engineering Grade	Substrate* (Specify)	Quantity (Specify)
FR8-4a	24" x 18"	3"	AUTHORIZED PARKING ONLY	Black on White		
FR11-5	24" x 18"	3"	NO VEHICLES BEYOND THIS POINT	Black on White		
FR8-4b	24" x 18"	3"	SERVICE VEHICLES ONLY	Black on White		
FR-31d	24" x 18"	5"	ENTER ONLY	Black on White		
FR-31e	24" x 18"	5"	EXIT ONLY	Black on White		

*AL—Aluminum HDO—High-Density Overlay FG—Fiberglass CP—Corrugated Plastic
 Manufacturer: All signs must meet EM-7100-15 and MUTCD specifications.

Library Card

Sheehy, Donna; Cote, Ted J.; Smith, John R. 2012. Incident sign ordering catalog. 1251–2821P–MTDC. Missoula, MT: U.S. Department of Agriculture Forest Service, Missoula Technology and Development Center. 20 p.

This report describes how to order signs for incident management that comply with the “Manual on Uniform Traffic Control Devices for Streets and Highways.” The ordering catalog is a companion to the Incident Sign Installation Guide (1251–2820P–MTDC).

Keywords: fire fighting, firefighting, high-visibility safety apparel, incident management, procurement, road signs, safety at work, traffic, traffic control, traffic safety, wildfires, wildland fire management

Electronic copies of MTDC’s documents are available on the Internet at:

<http://www.fs.fed.us/eng/pubs>

For additional technical information, contact MTDC.

Phone: 406–329–3900

Forest Service and Bureau of Land Management employees can search MTDC’s documents, videos, and CDs on their internal computer networks at:

<http://fsweb.mtdc.wo.fs.fed.us/search/>

