



THE TEUI GEOSPATIAL TOOLKIT 4.1

An ArcGIS Extension for Natural Resource Mapping

What is TEUI?

Terrestrial Ecological Unit Inventory (TEUI) is a hierarchical land survey and resource inventory system developed and used by the US Forest Service. TEUI products include ecological type descriptions, maps, interpretations that provide baseline information for forest plan revisions, timber and range management decisions, ecological and watershed assessments, and project level planning.

What is the TEUI Toolkit?

- Buffer Project Area...
- Create New Empty Survey Area...
- Import SSURGO Survey Area
- Open Survey Area...
- Add Data Stack Layers...
- Import Map Unit Polygons...
- Import Field Points...
- Update Statistics...
- Map Unit Statistics...
- Component Report
- Ecological Types Report
- Field Point Report
- Selected MUP Charts...
- Map Unit Charts...
- Select By Statistics...
- Validate Pedons
- Properties...

The TEUI Geospatial Toolkit is an ArcGIS 9.2/9.3 extension that accelerates TEUI, Soil Survey, and other natural resource mapping efforts. The Toolkit utilizes raster data (i.e. slope, aspect, elevation), polygon data (i.e. map units), and point data (i.e. soil pedon or vegetation plots), and displays this information in a tabular and graphical format. The Toolkit's focus and strengths are to assist users with:

- Creating new and consistent map units
- Characterizing established map units
- Evaluating previously mapped areas

What data does the Toolkit need?

The TEUI Toolkit can use any continuous or discrete raster data provided that it is numeric. Some examples include: slope, aspect, elevation, temperature, precipitation, and curvature. What about geology? To use thematic data like geology, you will have to convert each symbol to a number. You can import SSURGO linework, import polygons, or create polygons from scratch. You can use data from any source. When you are working on USFS land, the USFS Remote Sensing Applications Center can provide you data for your project area.

What is new in version 4.1?

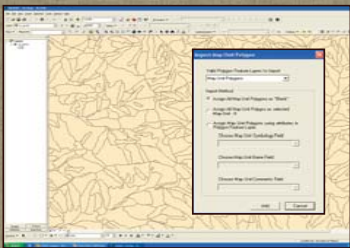
Features and updates include:

- Single version of the Toolkit for all NCSS users
- NRCS and SRITB Tool integration and compatibility
- Import whole SSURGO survey areas for soil update analyses
- Many database updates and corrections
- Improved error handling and user messages
- View pedon or plot data on map unit polygon charts
- Many more updates

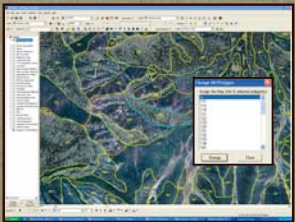
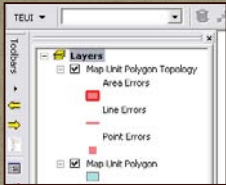
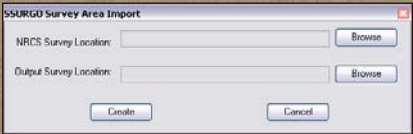
Is this digital soil mapping?

NO. While the Toolkit can help with the digital soil mapping process, it does not generate soil probability surfaces nor does it require knowledge of fuzzy logic mapping techniques. The Toolkit simply leverages geospatial data and descriptive statistics to more accurately delineate and characterize traditional polygon based map units.

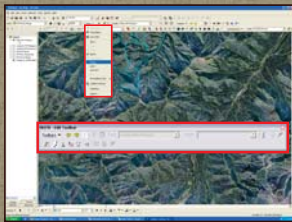
MAP UNIT DESIGN AND LEGEND DEVELOPMENT



- Import existing line work
- Geodatabase Topology Rules (no gaps/overlaps)
- Import a SSURGO survey area utility

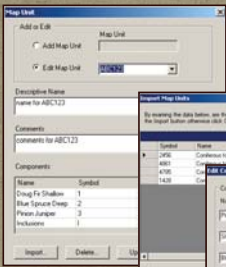


Hand digitize and label map units

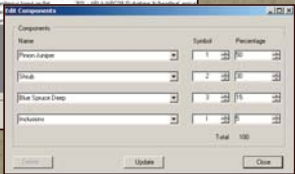


Edit map unit polygons with NRCS SRITB Tools or the Toolkit

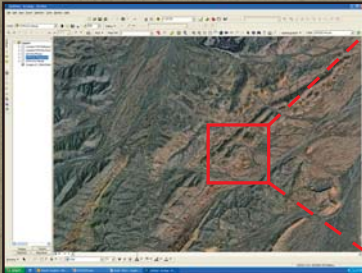
- Sketch polygons
- Merge and cut polygons
- Auto-complete polygons



Describe and define map units



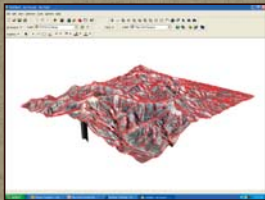
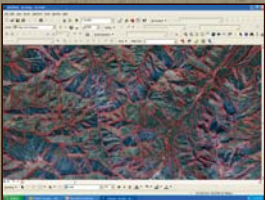
View landscapes and data at multiple scales



Drape imagery and interactively fly through the landscape

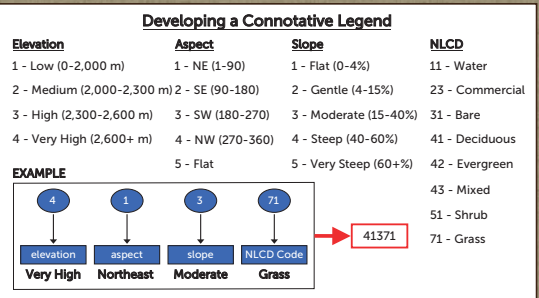
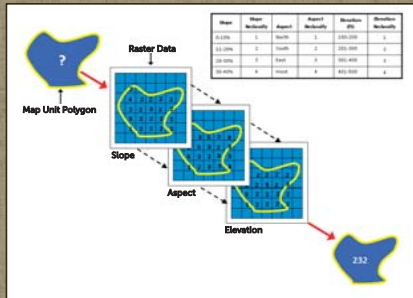
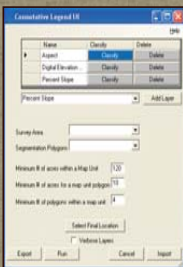


Visualize landscapes in 3D



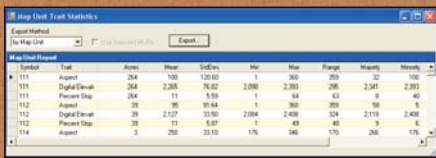
THE CONNOTATIVE LEGEND TOOL How it works

Easy user interface



MAP UNIT VALIDATION

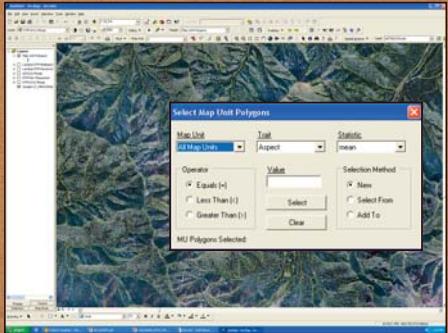
Compute tabular statistics that can be exported to Excel



Analyze map unit statistics in a graphical format



Query individual map unit properties or all map units



Compare map units to map units or specific polygons



PRODUCTS

Standard Map Templates

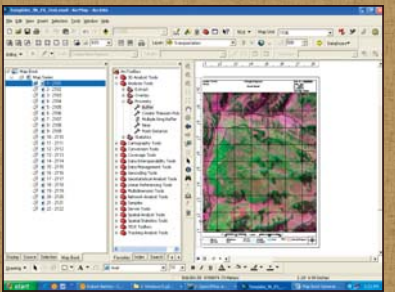
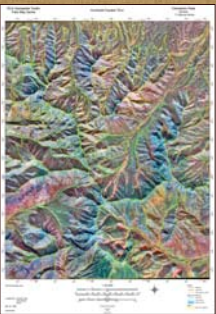
Generate Field Maps

1 : 9,000

1 : 12,000

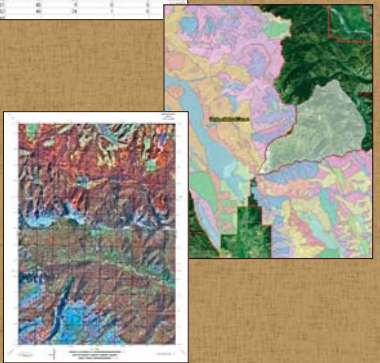
1 : 24,000

Overview maps



TEUI Products

- Geodatabases
- Spatial Data
- Tabular Data



CONTACT ■ For more information, please contact:
Robert Vaughan ■ 801.975.379 ■ robertvaughan@fs.fed.us
US Forest Service Remote Sensing Applications Center
Salt Lake City, UT 84119

