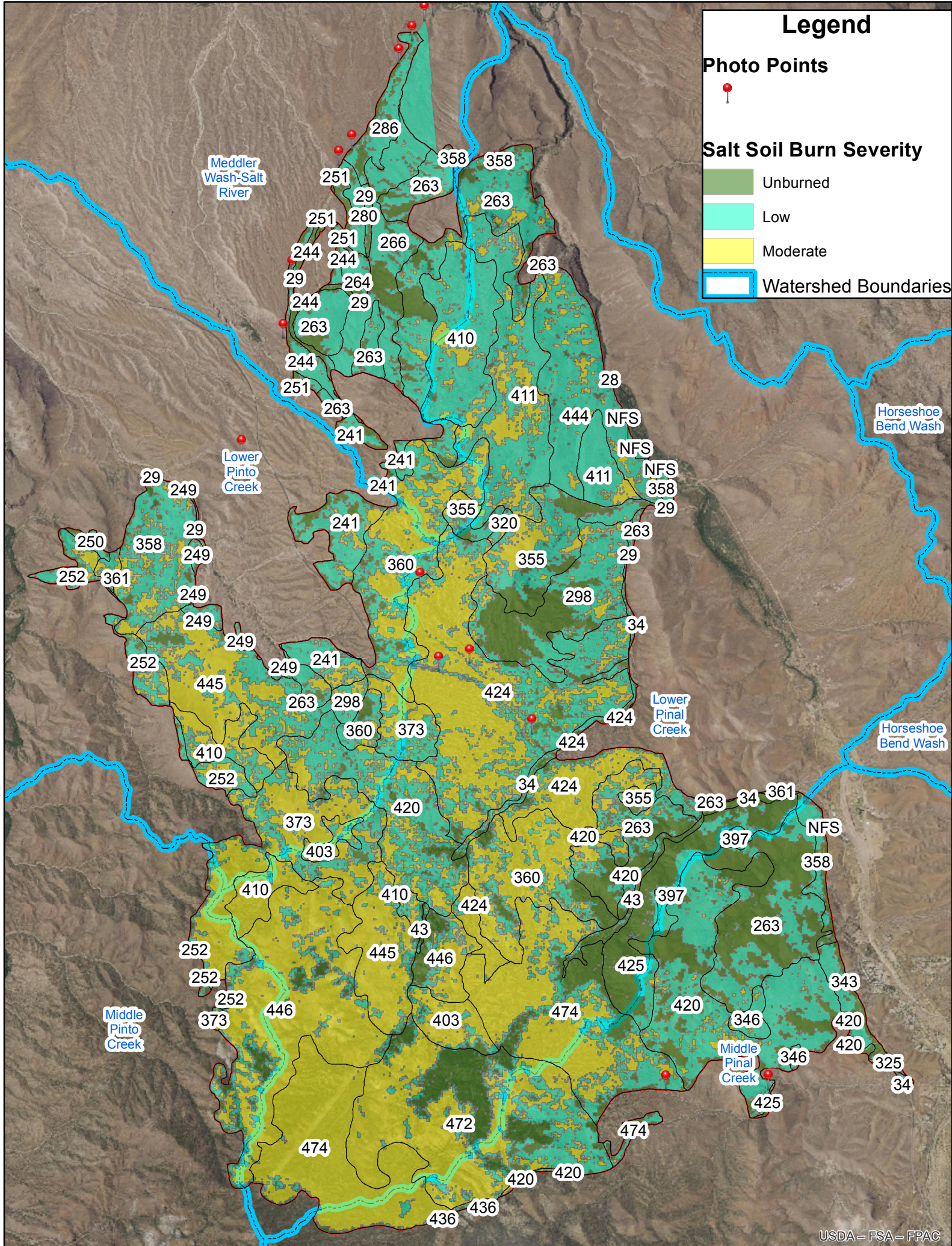
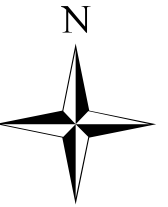
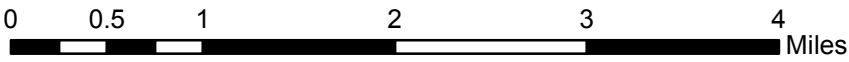


Salt Fire Soil Burn Severity, TNF 2020



USDA - FSA - FPAC



1:63,360

Preliminary Soil Burn Severity Mapping - This soil burn severity mapping was completed remotely due to COVID-19 concerns. In addition, the fire was still very active with heavy smoke in the area which can impact on the accuracy of soil burn severity mapping. This product is reproduced from information prepared by the USDA, Forest Service or from other suppliers. The Forest Service cannot assure the reliability or suitability of this information for a particular purpose. The data and product accuracy may vary due to compilation from various sources, including modeling and interpretation, and may not meet National Map Accuracy Standards. This information may be updated, corrected or otherwise modified without notification. For more information contact: Tonto National Forest Supervisors Office at 602-225-5200. The USDA is an equal opportunity provider and employer.