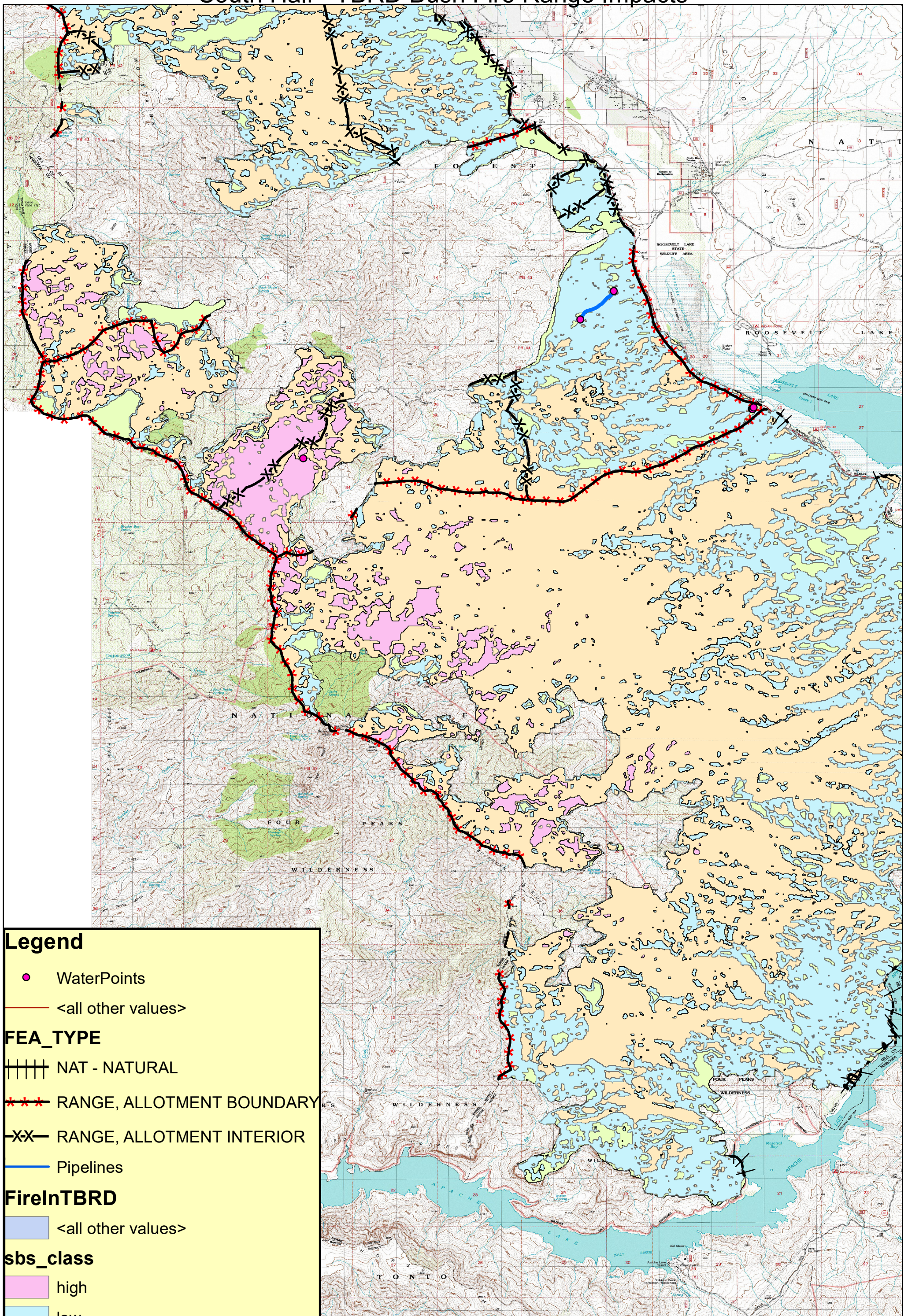


# South Half - TBRD Bush Fire Range Impacts



**Legend**

- WaterPoints
- <all other values>

**FEA\_TYPE**

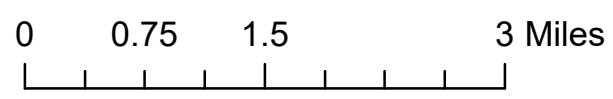
- |||| NAT - NATURAL
- \*\*\* RANGE, ALLOTMENT BOUNDARY
- XX- RANGE, ALLOTMENT INTERIOR
- Pipelines

**FireInTBRD**

- <all other values>

**sbs\_class**

- high
- low
- moderate
- unburned



1:76,018.14

