



**SOUTHWEST AREA TYPE 1
INCIDENT MANAGEMENT TEAM 2**
RICH NIETO - INCIDENT COMMANDER

TONTO NATIONAL FOREST

WOODBURY FIRE



AZ-TNF-000579 / P3L951

INCIDENT ACTION PLAN

Wednesday June 12, 2019

Day Operations

0600 to 2000

INCIDENT OBJECTIVES		1. Incident Name WOODBURY FIRE	2. Date Prepared 6/11/2019	3. Time Prepared 2100 hrs
4. Operational Period				
Wednesday June 12, 2019		DAY SHIFT 0600-2000		
5. Leaders Intent				
<p>The intent for the incident is to effectively utilize strategies and tactics that provide for firefighter and public safety first and foremost, which have a high probability of success. Objectives to be accomplished shall utilize risk based decisions that minimize unnecessary exposure for the purpose of implementing tasks associated with protecting priority values at risk.</p>				
6. General Control Objectives For The Incident (Include Alternatives)				
<ol style="list-style-type: none"> 1. Ensure firefighter, public and aviation safety through clear, concise leader's intent, work prioritization, and implementation of fundamental firefighting principals. 2. Protect and minimize threats to all private property and other identified values at risk including the community of Black Canyon City, Horseshoe Ranch and the Agua Fria National Monument. 3. Protect and minimize threats to I17 cooridor, Powerline infrastructure, Perry Mesa Archiological District, , Agua Fria Canyon Riparian Areas and Graising infrastructure. 4. Maintain and develop partnerships and relationships with stakeholders, cooperators and elected officials through timely and accurate public information. 5. Effectivly manage incident costs by planning stratagies that have a high probability of success. 				
7. Weather Forecast For Period				
Mostly cloudy then becoming partly cloudy.				
High Temp: Minimum RH: Winds (20'):				
LAL: Haines: Prob. Of Precipitation:				
8. General Safety Message				
Maintain situational awareness, be aware of changing weather conditions including outflow winds and lightning associated to thunderstorms.				
9. ATTACHEMENTS (X IF ATTACHED)				
<input type="checkbox"/> Organization List - ICS 203		<input checked="" type="checkbox"/> Medical Plan - ICS 206		<input type="checkbox"/> _____
<input checked="" type="checkbox"/> Division Assignment Lists - ICS 204		<input checked="" type="checkbox"/> Unit Log 214		<input type="checkbox"/> _____
<input checked="" type="checkbox"/> Communications Plan - ICS 205		<input checked="" type="checkbox"/> WF206 9 Line		<input type="checkbox"/> _____
10. Prepared By (Planning Section Chief)			11. Approved By (Incident Commander)	
Bradley Johnston PSC			Rich Nieto, IC1	

ORGANIZATION ASSIGNMENT LIST				Operations Section	
1. Incident Name	WOODBURY FIRE			Field Operations	
2. Date Prepared	06/11/2019	3. Time Prepared	2200 hrs	Field Operations	
				Planning Operations	
4. Operational Period Wednesday 06/12/2019 Day 0600 to 2000				Planning Operations	
Incident Commander and Staff				Day Operations	
Incident Commander	RICH NIETO			Division D	
Deputy	JOHN PIERSON			Division G	
Safety Officer	DON MUISE / MIKE GILLESPIE			Division J	
Information Officer	KAREN TAKAI			Group	
Liaison Officer	BRANNON EAGAR / SCOTT COOKE			Group	
Agency Representative				Group	
Tonto NF				LE Group	
READ					
BLM					
AZ Dept. of Forestry					
				Air Operations Branch	
Planning Section				Air Operations Branch Director	PETE SCHWAB
Section Chief	BRADLEY JOHNSTON				MARK PATER
Situation Unit				Air Support Group Supervisor	DON CLARK
Demobilization Unit				Helibase Manager	
Resources Unit Leader	BETSY DRAGAN				
Status Check-in	DAN FRIEBURG				
Fire Behavior Analyst					
				Finance Section	
GIS Specialist	KERRY GAIZ			Section Chief	KEN LEAKE
Computer Specialist	COLLEEN BAILEY / CHRIS DAWSON			Time Unit	MEGAN MACHT
Meteorologist				Equipment Time	ANN BACA
Human Resource	PATTY BROOKINS			Personnel Time	
Logistics Section				Cost Unit	
Section Chief	JIMMY GRIMES / JR CALKINS			Procurement Unit Leader	
Ordering Manager				Comps/Claims	
Supply Unit					
Facilities Unit	SHAWN FOSTER				
Base Camp					
Ground Support Unit	TIM MABERY				
Communications Unit	MARTIN JOHNS				
Communications Tech	IAN JAMES				
Medical Unit	SCOTT PHILLIPS / MARK KEEGAN(t)				
Food Unit	HAROLD BROWN				
				Prepared by: Bradley Johnston PSC	



News Headlines

- [Storm Spotter class schedule](#)
- [This Day in Weather History](#)

Additional Headlines

Hazardous Weather Conditions

- [Excessive Heat Warning until June 13, 08:00 PM MST](#)

[En Español](#) | [Share](#)

Current conditions at Phoenix-Mesa Gateway Airport (KIWA)

Lat: 33.31667°N Lon: 111.65°W Elev: 1381ft.



Mostly Cloudy
95°F
35°C

Humidity 13%
Wind Speed SSE 6 MPH
Barometer 29.93 in
Dewpoint 36°F (2°C)
Visibility 10.00 mi
Heat Index 90°F (32°C)
Last update 12 Jun 9:50 am MST

Extended Forecast for 6 Miles SE Apache Junction AZ

NOW until 8:00pm Thu



Excessive Heat Warning



Today
Click here for hazard details and duration



Mostly Sunny

High: 109 °F

Tonight



Patchy Smoke

Low: 81 °F

Thursday



Patchy Smoke then Sunny and Breezy

High: 109 °F

Thursday Night



Patchy Smoke and Breezy

Low: 77 °F

Friday



Patchy Smoke then Sunny and Breezy

High: 103 °F

Friday Night



Clear

Low: 74 °F

Saturday



Sunny

High: 100 °F

Saturday Night



Clear

Low: 75 °F

Detailed Forecast

Today

Mostly sunny, with a high near 109. South wind 5 to 10 mph becoming west in the afternoon.

Tonight

Patchy smoke after 9pm. Mostly clear, with a low around 81. Light and variable wind becoming east southeast 5 to 10 mph after midnight.

Thursday

Patchy smoke before 9am. Sunny, with a high near 109. Breezy, with a southeast wind 5 to 15 mph becoming west southwest in the afternoon. Winds could gust as high as 20 mph.

Thursday Night

Patchy smoke after 10pm. Clear, with a low around 77. Breezy, with a west southwest wind 10 to 15 mph becoming southeast after midnight. Winds could gust as high as 20 mph.

Friday

Patchy smoke before 11am. Sunny, with a high near 103. Breezy, with a southeast wind 10 to 15 mph becoming west southwest in the afternoon.

Friday Night

Clear, with a low around 74. Southwest wind 5 to 10 mph becoming southeast after midnight.

Saturday

Sunny, with a high near 100. South southeast wind around 5 mph becoming west southwest in the afternoon.

Saturday Night

Clear, with a low around 75. West wind around 5 mph becoming calm in the evening.

Sunday

Sunny, with a high near 101. South wind 5 to 10 mph becoming west southwest in the afternoon.

Sunday Night

Partly cloudy, with a low around 74. West southwest wind 5 to 10 mph becoming light and variable after midnight.

Monday

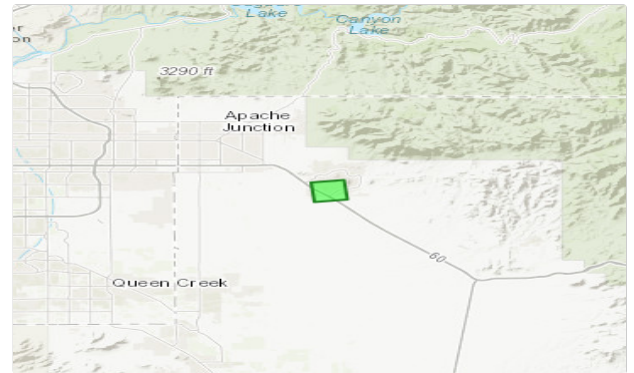
Mostly sunny, with a high near 100. Southwest wind around 5 mph.

Monday Night

Mostly clear, with a low around 73. West southwest wind around 5 mph becoming calm after midnight.

Tuesday

Sunny, with a high near 100. West southwest wind 5 to 10 mph.



Forecast Area

Point Forecast:

6 Miles SE Apache Junction AZ
33.36°N 111.46°W (Elev. 1798 ft)

Last Update:

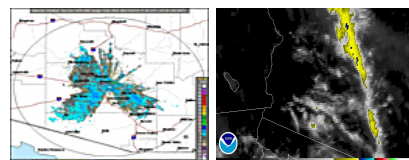
2:50 am MST Jun 12, 2019

Forecast Valid:

10am MST Jun 12, 2019-6pm MST Jun 18, 2019

Additional Resources

Radar & Satellite Image



DIVISION ASSIGNMENT LIST		Branch	Division/Group
Incident Name			Division ALPHA
WOODBURY FIRE		Operational Period	
		Date: 6-12-19	Time: 0600-2000
Operations Personnel			
Operations Chief	Todd Abel / Rocky Gilbert	Branch Director	
Safety Officer	Don Muise / Mike Gillespie	Division/Group Supervisor	Aaron Graesar

Resources Assigned This Period						
Strike Team/Task Force/ Resource Designator	Req#	Last Shift	Leader	# Persons	Drop Off Point /Time	Pick Up Point / Time
UNSTAFFED						

Work Assignments (Task and Purpose)
Task: Scout the division finding opportunities along the wilderness boundary to slow or stop the fire spread.
Purpose: Keep fire within the wilderness boundary.

End State (Desired outcome and Time Frame)
 Prepare strategy and resource needs if fire moves to the southeast.

EMS Transport Time Risk Analysis			Note
X <2HRS GREEN	<3HRS YELLOW	<3HRS RED	

Special Instructions

Division/Group Communication Summary							
Function	CHANNEL	Function	Frequency RX	Frequency TX	Channel		
Command	1	Air to Ground	b7e & b7f		4		
Tactical	8						
Prepared by	Approved By		Date	Time			
Betsy Dragan RESL	Bradley Johnston PSC		6-11-19	22:00			

DIVISION ASSIGNMENT LIST		Branch	Division/Group
Incident Name			Division DELTA
WOODBURY FIRE		Operational Period	
		Date: 6-12-19	Time: 0600-2000
Operations Personnel			
Operations Chief	Todd Abel / Rocky Gilbert	Branch Director	
Safety Officer	Don Muise / Mike Gillespie	Division/Group Supervisor	Chad Rice / Koreena Haynes (t)

Resources Assigned This Period						
Strike Team/Task Force/ Resource Designator	Req#	Last Shift	Leader	# Persons	Drop Off Point /Time	Pick Up Point / Time
TFLD				1	ICP 0600	ICP 2000
HC1 Geronimo IHC			J. Hostetler	20	ICP 0600	ICP 2000
HC1 Mesa IHC			P. Moore	19	ICP 0600	ICP 2000
HC1 Valyermo IHC					ICP 0600	ICP 2000
HC1 Flagstaff IHC					ICP 0600	ICP 2000
HC2 Perryville			J. Barreras	20	ICP 0600	ICP 2000
ENG3 TNF E1228					ICP 0600	ICP 2000
ENG6 STATE E261			J. Ottman	4	ICP 0600	ICP 2000
ENG6 E632					ICP 0600	ICP 2000
ENG6 E1217					ICP 0600	ICP 2000
ENG6 E362					ICP 0600	ICP 2000
MEDIC 1			Fenton EMPF / Herrick EMPF	2	ICP 0600	ICP 2000
AMB 1			McKinney EMPF / Meek EMTF	2	ICP 0600	ICP 2000
SOFR			Bryce Botts	1	ICP 0600	ICP 2000

Work Assignments (Task and Purpose)

Task: Continue prep and scout 172 Rd toward Division Golf break, fire as needed. Assess damage and minimize further impact and JF Headquarters Ranch.

Purpose: Utilize natural features and trail system in Hewitt Canyon to check fire growth.

End State (Desired outcome and Time Frame)

Keep fire north and west of the 172 Rd.

EMS Transport Time Risk Analysis			Note
X	<2HRS GREEN	<3HRS YELLOW	<3HRS RED

Special Instructions

Assess solar structures and poly tanks in JF Ranch. Report livestock observed in Division Delta.

Division/Group Communication Summary								
Function				CHANNEL	Function	Frequency RX	Frequency TX	Channel
Command	b7e & b7f			1	Air to Ground	b7e & b7f		4
Tactical				9				

Prepared by Betsy Dragan RESL	Approved By Bradley Johnston PSC	Date 6-11-19	Time 22:00
----------------------------------	-------------------------------------	-----------------	---------------

DIVISION ASSIGNMENT LIST		Branch	Division/Group
Incident Name			Division GOLF
WOODBURY FIRE		Operational Period	
		Date: 6-12-19	Time: 0600-2000

Operations Personnel			
Operations Chief	Todd Abel / Rocky Gilbert		Branch Director
Safety Officer	Don Muise / Mike Gillespie		Division/Group Supervisor Travis Mabery

Resources Assigned This Period

Strike Team/Task Force/ Resource Designator	Req#	Last Shift	Leader	# Persons	Drop Off Point /Time	Pick Up Point / Time
UNSTAFFED						

Work Assignments (Task and Purpose)

Task: Scout looking for opportunities using existing roads and natural features to protect Elephant Butte and tie line in with Division Delta.
Purpose: To keep fire from the community of Elephant Butte and tying

End State (Desired outcome and Time Frame)

Using intel staff division as needed to protect the community of Elephant Butte.

EMS Transport Time Risk Analysis				Note
<input checked="" type="checkbox"/> <2HRS GREEN	<input type="checkbox"/> <3HRS YELLOW	<input type="checkbox"/> <3HRS RED		

Special Instructions

Division/Group Communication Summary

Function Command	Frequency RX	Frequency TX	TONE	CHANNEL	Function	Frequency RX	Frequency TX	Channel	
Tactical	b7e & b7f			1	Air to Ground	b7e & b7f		4	
				10					
Prepared by	Betsy Dragan RESL		Approved By	Bradley Johnston PSC		Date	6-11-19	Time	22:00

DIVISION ASSIGNMENT LIST				Branch		Division/Group		
Incident Name						Division JULIET		
WOODBURY FIRE				Operational Period				
				Date: 6-12-19		Time: 0600-2000		
Operations Personnel								
Operations Chief		Todd Abel / Rocky Gilbert		Branch Director				
Safety Officer		Don Muise / Mike Gillespie		Division/Group Supervisor		Nick Castro		
Resources Assigned This Period								
Strike Team/Task Force/ Resource Designator	Req#	Last Shift	Leader	# Persons	Drop Off Point /Time	Pick Up Point / Time		
HC1 Payson IHC			M. Schinstock	20	ICP 0600	ICP 2000		
T2IA Bear Jaw			S. Erickson		ICP 0600	ICP 2000		
ENG6 E261			J. Ottman	4	ICP 0600	ICP 2000		
ENG6 E461			Burrell / White	5	ICP 0600	ICP 2000		
ENG6 E641					ICP 0600	ICP 2000		
MEDIC 2			Armstead EMPF / Marin EMPF	2	ICP 0600	ICP 2000		
SOF2			T.C. Smith	1	ICP 0600	ICP 2000		
Work Assignments (Task and Purpose)								
Task: Continue prep work around Quarter Circle U Ranch. Look for opportunities to tie a fire into constructed hand line to wilderness boundary.								
Purpose: Prep along Division Juliet in anticipation of fire crossing the wilderness boundary.								
End State (Desired outcome and Time Frame)								
Fire is held along the wilderness boundary up to division break at Peralta Trailhead.								
EMS Transport Time Risk Analysis				Note				
X	<2HRS GREEN	<3HRS YELLOW	<3HRS RED					
Special Instructions								
Division/Group Communication Summary								
Function	Frequency RX	Frequency TX	TONE	CHANNEL	Function	Frequency RX	Frequency TX	Channel
Command	b7e & b7f			1	Air to Ground	b7e & b7f		
Tactical	b7e & b7f			11				4
Prepared by Betsy Dragan RESL		Approved By Bradley Johnston PSC			Date 6-11-19		Time 22:00	

DIVISION ASSIGNMENT LIST		Branch	Division/Group
Incident Name			Structure Group
WOODBURY FIRE		Operational Period	
		Date: 6-12-19	Time: 0600-2200

Operations Personnel			
Operations Chief	Todd Abel / Rocky Gilbert	Branch Director	
Safety Officer	Don Muise / Mike Gillespie	Division/Group Supervisor	Dean Steward

Resources Assigned This Period						
Strike Team/Task Force/ Resource Designator	Req#	Last Shift	Leader	# Persons	Drop Off Point /Time	Pick Up Point / Time
UNSTAFFED						

Work Assignments (Task and Purpose)

Task: Scout and assess all structures and improvements south of the fire area.
Purpose: Identify improvements that need prepped and/or protected.

End State (Desired outcome and Time Frame)

All improvements are identified and protected.

EMS Transport Time Risk Analysis				Note
X	<2HRS GREEN	<3HRS YELLOW	<3HRS RED	

Special Instructions

Division/Group Communication Summary

Function	Frequency RX	Frequency TX	TONE	CHANNEL	Function	Frequency RX	Frequency TX	Channel
Command	b7e & b7f				Air to Ground	b7e & b7f		
Tactical								

Prepared by Betsy Dragan RESL	Approved By Bradley Johnston PSC	Date 6-11-19	Time 22:00
----------------------------------	-------------------------------------	-----------------	---------------

DIVISION ASSIGNMENT LIST			Branch	Division/Group						
Incident Name				Swing Shift						
WOODBURY FIRE			Operational Period							
			Date: 6-12-19		Time: 1400-0200					
Operations Personnel										
Operations Chief	Todd Abel / Rocky Gilbert		Branch Director							
Safety Officer	Don Muisse / Mike Gillespie		Division/Group Supervisor		Bob Arthur					
Resources Assigned This Period										
Strike Team/Task Force/ Resource Designator	Req#	Last Shift	Leader	# Persons	Drop Off Point /Time	Pick Up Point / Time				
UNSTAFFED										
Work Assignments (Task and Purpose)										
Task: Prepare to long shift and burn to stay ahead fire's progression. Identify resources to long shift during day.										
Purpose: Keep fire from impacting private property south and west of fire.										
End State (Desired outcome and Time Frame)										
When lines are burned private property is protected and secured.										
EMS Transport Time Risk Analysis					Note					
X	<2HRS GREEN	<3HRS YELLOW	<3HRS RED							
Special Instructions										
Division/Group Communication Summary										
Function	Frequency RX	Frequency TX	TONE	CHANNEL	Function	Frequency RX	Frequency TX	Channel		
Command	b7e & b7f				1	Air to Ground	b7e & b7f		4	
Tactical	b7e & b7f				12					
Prepared by	Betsy Dragan RESL		Approved By	Bradley Johnston PSC		Date	6-11-19		Time	22:00

AIR OPERATIONS SUMMARY 220		Prepared By: Mark Pater	Prepared: 06/11/2019	Prepared Time: 2000 hrs.		
1. INCIDENT NAME: WOODBURY		2. OPERATIONAL PERIOD 06/12/2019	START TIME: 0700	END TIME: 2000	SUNRISE: 0515	SUNSET: 1934

3. REMARKS (Safety Notes, Hazards, Air Operations Special Equipment, etc.). <p style="text-align: center;"><u>Leader's Intent for Aviation</u></p> <p>TASK: PROVIDE AVIATION SUPPORT TO CREWS WITH WATER/RETARDANT DROPS AND RECONNAISSANCE FLIGHTS FOR OPERATIONS PERSONNEL WHILE ENSURING SAFE AVIATION OPERATIONS.</p> <p>PURPOSE: KEEP FIRE FROM PROGRESSING TOWARDS IDENTIFIED VALUES (I.E. HOMES, PRIVATE PROPERTY, CULTURAL SITES, ETC.).</p> <p>END STATE: PROVIDE A SECURE FIRE PERIMETER TO PROTECT AND MINIMIZE THREATS TO PRIVATE LAND AND COMMUNITIES WHILE MINIMIZING UNNECESSARY EXPOSURE TO FIREFIGHTERS AND THE PUBLIC.</p> <p style="text-align: center;">***High winds have been a safety issue. ***HEADS UP!!!***</p>		4. READY ALERT AIRCRAFT: <p style="text-align: center;"><i>Order through Communications</i></p> <p style="text-align: center;">See Medical Plan in the IAP</p>	5. TFR: 9/1619 N33° 24' 34" x W111° 11' 57" 5nm radius Altitude: From the surface up to and including 9,000 feet MSL
--	--	--	---

6. PERSONNEL	NAME	PHONE #	7. FREQUENCIES	AM	FM	8. FIXED-WING Avail/ Type/ Make-Model/ N#/ Base
AOBD	Pete Schwab	b6	b7e & b7f	b7e & b7f		AIRTANKERS: Order thru ATGS ATGS Platforms: N261GB – King Air 90A N985AB – King Air 90A N121EG – Beech E90 PIFC Aviation – 480-457-1552
AOBD	Mark Pater			b7e & b7f		
ASGS	Don Clark					
ATGS	Ryan Meyers					
ATGS	Chris Niccoli					
ATGS(t)	Jason Kolb					

9. HELICOPTERS (Use Additional Sheets as Necessary)

FAA N#	TY	MAKE/ MODEL	BASE	START	AVAIL	REMARKS	FAA N#	TY	MAKE/ MODEL	BASE	START	AVAIL	REMARKS
H-6AS	3	Bell 407HP	Goldfield	0700	0800	Recon	H-1CH	1	CH-47D	Falcon	0700	0800	Water Drops
H-8ME	3	AS350 B3	Falcon	0700	0800	Enroute							
H-7HE	3	AS350 B3	Falcon	0700	0800	Enroute							
H-6GH	2	Bell 205 A1	Falcon	0700	0800	Enroute							



10. TASK/ MISSION/ ASSIGNMENT (Type/ function includes: Air Tactical, Retardant, Recon, Personnel Transport, Bucket Operations, SAR, etc.)					
TYPE/FUNCTION	PRIORITY	NAME OF PERSONNEL OR CARGO (If applicable) or instructions for tactical aircraft	MISSION START	FLY FROM	FLY TO
ATGS		Provide coverage over the fire as needed or requested by Ops.	0800	Falcon Field	Fire
Initial Attack		Support Initial Attack actions as requested.	TBD	Helibase	IA
Medevac		**See Medical Plan in IAP – Review during Division Breakouts**	TBD		Fire
Water Drops		As needed and approved by OPS, order through ATGS	0800	Helibase	Fire
Recon		Fire reconnaissance by Ops. Priority	0800	Helibase	Fire

Helibase, Dip Sites, Pick Up Sites, etc.	Helibase, Dip Sites, Pick Up Sites, etc.

Wind Restrictions

Flights above ground level	Flight Permitted in Winds Less than / Maximum Gust Spread		
	Type 1 Helicopters	Type 2 Helicopters	Type 3 Helicopters
More than 500' AGL	<50kts / Gusts: N/A	<50kts / Gusts: N/A	<50kts / Gusts: N/A
Less than 500' AGL	<40kts / Max Gust Spread: 15kts	<40 kts / Max Gust Spread: 15kts	<30kts / Max Gust Spread: 15kts

Approved by: /s/ Pete Schwab, AOBD

INCIDENT RADIO COMMUNICATIONS		1. INCIDENT NAME Woodbury		2. DATE/TIME PREPARED 06/11 1800		3. OPERATIONAL PERIOD DATE/TIME 06/12 Day		
4. BASIC RADIO CHANNEL UTILIZATION								
Ch #	Channel Name	RX Frequency Narrowband (N) Wideband (W)	RX Tone/NAC	TX Frequency Narrowband (N) Wideband (W)	TX Tone/NAC	Mode Digital (D) Analog (A) Mixed (M)	UCG List	
1	FN 1	b7e & b7f	N	b7e & b7f	N	b7e & b7f	A	Humboldt
2	FN 2		N		N		A	Signal
3	ADMIN		N		N		A	Ord
4	A/G Pri		N		N		A	Diamond
5	A/G SEC		N		N		A	Aztec
6			N		N		A	Bronco
7	Common		N		N		A	Portable Rpeater
8	VFIRE21		N		N		A	DIV A/Structure
9	TAC 1		N		N		A	DIV D
10	TAC 2		N		N		A	DIV G
11	TAC 3		N		N		A	DIV J
12	TAC 4		N		N		A	SWING
13	WHT Tanks		N		N		A	
14	BLM TAC2		N		N		A	
15	NOAA		N		N		A	
16	AIRGUARD		N		N		A	EMERGENCY USE TO AIRCRAFT
I-205 Prepared By		Martin Johns						

HEALTH AND SAFETY MESSAGE

SAFETY starts with *YOU*

INCIDENT **WOODBURY FIRE**

DATE: **06/11/2019** Day Shift

Major Hazards and Risks:

- **Transition Period** – Know who you're working for and how to talk to everyone
- **Aircraft** – Heads up for bucket work and retardant drops in your area
- **Driving Hazards** – Peralta Road activity, stay alert for the public on all roads
- **Heat Stress** – Hotter and drier, refer to IRPG page 109
- **Communications** – Check radio frequencies before committing, don't count on cell phone service

Weather Becoming Hotter and Drier

Narrative:

- ✓ **Crew Briefing** - It is absolutely essential that everyone on the fire line receives a thorough briefing. Supervisors ensure that the briefing includes the weather, fire behavior, safety message, communications plan, and the Special Instructions on the Division Assignment Form.
- ✓ **Personal Health** – Wash hands at all opportunities but especially before eating. Drink plenty of fluids, water is best.
- ✓ **Medivac Procedures**- Review the Medical Plan – Know exactly how to proceed before the injury occurs. Know your location and the closest Medivac site is located. Periodically review the Medical Incident Report.
- ✓ **Team shadowing will be ongoing today.** Stay aware that folks unfamiliar with the area could be on your Division.

Transition Period

Little Goose Fire- Wyoming, 2007

A local type 3 team transitioned to a type 2 team on August 11, 2007. On Aug 12, the Structure Protection Specialist and TFLD were working in Division D to retrieve a fold-a-tank.

They were radioed by the lookout to immediately leave because of hotspots below them, making upslope runs toward their position.

USE THE QR CODE BELOW TO READ THE FLA



Safety Officers: Don Muise, Mike Gillespie, Bryce Botts, T.C Smith, Jon McLaughlin (T)

MEDICAL PLAN (ICS 206 WF)

1. Incident/Project Name				2. Operational Period				
Woodbury Fire				June 12, 2019 – Day Operational Period				
3. Ambulance Services								
Name	Complete Address	Phone & EMS Frequency	Advanced Life Support (ALS) Yes No					
Ambo #1 Pinetop Fire Ambulance	Incident Ambulance	Radio - Tac on Ground/Command	X					
AMR Ambulance	Dispatched from Florence	Dispatch via 911	X					
4. Air Ambulance Services								
Name	Phone	Type of Aircraft & Capability						
Native Air - Native 1 from Mesa Native 7 from Payson	Dispatch via 911 (800-642-7828 for emergency dispatch)	Commercial Air Ambulance: A-Star. Advance Life Support (ALS) Nurse and Paramedic. Day and night capable.						
Air Evac (PHI Air Medical) From Deer Valley, Mesa, or San Tan Valley	Dispatch via 911 (800-321-9522 for emergency dispatch)	Commercial Air Ambulance: A-Star. Advance Life Support (ALS) Nurse and Paramedic. Day and night capable.						
DPS Ranger	Dispatch via 911 (623-582-0911 for emergency dispatch)	DPS Air Rescue: Bell 407. ALS Paramedic. Short Haul (Ranger 1) and Hoist Capable. Day and night capable.						
5. Hospitals								
Name Complete Address	GPS Datum – WGS 84 Coordinate Standard Degrees Decimal Minutes DD° MM.MMM' N - Lat DD° MM.MMM' W -Long		Travel Time Air Gnd		Phone	Helipad Yes No		Level of Care Facility
Peralta Urgent Care of Gold Canyon 6740 S Kings Ranch Rd Gold Canyon, AZ 85118 Open 0800 to 1800			NA	20 min	(480) 616-2500	X		Urgent Care
Mountain Vista Medical Center 1301 S. Crimson Rd Mesa, AZ 85209	Lat:	N 33° 23.49'	NA	40 min	Main: (480) 358-6100	X		Level 3 Trauma
	Long:	W 111° 36.726'						
	Elevation:							
HonorHealth Scottsdale Osborn Medical Center 7400 E Osborn Rd Scottsdale, AZ85254	La t:	N 33° 29.347'	40 min	1.5 hrs	Main: (480) 882-4000	X		Level 1 Trauma
	Long:	W 111° 55.325'						
	Elevation:							
Maricopa Medical Center 2601 E Roosevelt St Phoenix, AZ 85008	Lat:	N 33° 27.39'	35 min	1 hr	Main: (602) 344-5011 ER: (602) 344-5411 Option 9	X		Level 1 Trauma and Burn Center
	Long:	W 112° 01.46'						
	Elevation:							

MEDICAL PLAN (ICS 206 WF)

6. Division Branch Group	Area Location Capability	
Structure Group	EMS Responders & Capability	Contact Communications for assistance
	Equipment Available on Scene	Ground and/or air ambulance as requested
	Medical Emergency Channel	Tac on Ground/Command Channel
	ETA for Ambulance to Scene	
	Air:	60 minutes
	Ground:	Varies
	Approved Helispot	
	Lat:	
Long:		
Swing Group	EMS Responders & Capability	Contact Communications for assistance
	Equipment Available on Scene	Ground and/or air ambulance as requested
	Medical Emergency Channel	Tac on Ground/Command Channel
	ETA for Ambulance to Scene	
	Air:	60 minutes
	Ground:	Varies
	Approved Helispot	
	Lat:	
Long:		
DIV A	EMS Responders & Capability	Contact Communications for assistance
	Equipment Available on Scene	Ground and/or air ambulance as requested
	Medical Emergency Channel	Tac on Ground/Command Channel
	ETA for Ambulance to Scene	
	Air:	60 minutes
	Ground:	Varies
	Approved Helispot	H-10
	Lat:	N 33° 24.357'
Long:	W 111° 11.315'	
DIV D	EMS Responders & Capability	Medic 1 - Fenton EMP-F (ALS) & Herrick EMP-F (ALS) <i>Daisy Mountain Fire – Battalion 141</i> UTV with stokes basket in trailer Ambo 1 – McKinney EMP-F (ALS) & Meek EMT-F (BLS) <i>Pinetop Fire</i> 4x4 ambulance
	Equipment Available on Scene	Ground and/or air ambulance as requested
	Medical Emergency Channel	Tac on Ground/Command Channel
	ETA for Ambulance to Scene	
	Air:	60 minutes
	Ground:	Varies
	Approved Helispot	
	Lat:	
Long:		

MEDICAL PLAN (ICS 206 WF)

DIV G	EMS Responders & Capability	Contact Communications for assistance		
	Equipment Available on Scene	Ground and/or air ambulance as requested		
	Medical Emergency Channel	Tac on Ground/Command Channel		
	ETA for Ambulance to Scene			
	Air:	60 minutes		
	Ground:	Varies		
	Approved Helispot			
	Lat:			
	Long:			
DIV J	EMS Responders & Capability	Medic 2 - Armstead EMP-F (ALS) & Marin EMP-F (ALS) <i>Arizona Fire Medical Authority</i> UTV/ATV		
	Equipment Available on Scene	Ground and/or air ambulance as requested		
	Medical Emergency Channel	Tac on Ground/Command Channel		
	ETA for Ambulance to Scene			
	Air:	60 minutes		
	Ground:	Varies		
	Approved Helispot	H-21		
	Lat:	N 33° 24.453'		
	Long:	W 111° 12.585'		
8. Prepared By (Medical Unit Leader)		9. Date/Time	10. Reviewed By (Safety Officer)	11. Date/Time
Chuck Passek MEDL (907)382-5824		June 11, 2019 2200	Mike Gillespie SOF1	June 11, 2019 2200

MEDICAL PLAN (ICS 206 WF)

Medical Incident Report

FOR A NON-EMERGENCY INCIDENT, WORK THROUGH CHAIN OF COMMAND TO REPORT AND TRANSPORT INJURED PERSONNEL AS NECESSARY.

FOR A MEDICAL EMERGENCY: IDENTIFY ON SCENE INCIDENT COMMANDER BY NAME AND POSITION AND ANNOUNCE "MEDICAL EMERGENCY" TO INITIATE RESPONSE FROM IMT COMMUNICATIONS/DISPATCH.

Use the following items to communicate situation to communications/dispatch.

1. CONTACT COMMUNICATIONS / DISPATCH (**Verify correct frequency prior to starting report**)
Ex: "Communications, Div. Alpha. Stand-by for Emergency Traffic."
2. INCIDENT STATUS: *Provide incident summary (including number of patients) and command structure.*
Ex: "Communications, I have a Red priority patient, unconscious, struck by a falling tree. Requesting air ambulance to Forest Road 1 at (Lat./Long.) This will be the Trout Meadow Medical, IC is TFLD Jones. EMT Smith is providing medical care."

Severity of Emergency / Transport Priority	<input type="checkbox"/> RED / PRIORITY 1 Life or limb threatening injury or illness. Evacuation need is IMMEDIATE <i>Ex: Unconscious, difficulty breathing, bleeding severely, 2° – 3° burns more than 4 palm sizes, heat stroke, disoriented.</i> <input type="checkbox"/> YELLOW / PRIORITY 2 Serious Injury or illness. Evacuation may be DELAYED if necessary. <i>Ex: Significant trauma, unable to walk, 2° – 3° burns not more than 1-3 palm sizes.</i> <input type="checkbox"/> GREEN / PRIORITY 3 Minor Injury or illness. Non-Emergency transport <i>Ex: Sprains, strains, minor heat-related illness.</i>	
Nature of Injury or Illness & Mechanism of Injury		<i>Brief Summary of Injury or Illness (Ex: Unconscious, Struck by Falling Tree)</i>
Transport Request		<i>Air Ambulance / Short Haul/Hoist Ground Ambulance / Other</i>
Patient Location		<i>Descriptive Location & Lat. / Long. (WGS84)</i>
Incident Name		<i>Geographic Name + "Medical" (Ex: Trout Meadow Medical)</i>
On-Scene Point of Contact		<i>Name of on-scene POC of Incident within an Incident (Ex: TFLD Jones)</i>
Patient Care		<i>Name of Care Provider (Ex: EMT Smith)</i>

3. INITIAL PATIENT ASSESSMENT: *Complete this section for each patient as applicable (start with the most severe patient)*

Patient Assessment: See IRPG page 106

Treatment:

4. TRANSPORT PLAN:

Evacuation Location (if different): *(Descriptive Location (drop point, intersection, etc.) or Lat. / Long.) Patient's ETA to Evacuation Location:*

Helispot / Extraction Site Size and Hazards:

5. ADDITIONAL RESOURCES / EQUIPMENT NEEDS:

Example: Paramedic/EMT, Crews, Immobilization Devices, AED, Oxygen, Trauma Bag, IV/Fluid(s), Splints, Rope rescue, Wheeled litter, HAZMAT, Extrication

6. COMMUNICATIONS: Identify State Air/Ground EMS Frequencies and Hospital Contacts as applicable

Function	Channel Name/Number	Receive (RX)	Tone/NAC *	Transmit (TX)	Tone/NAC *
COMMAND					
AIR-TO-GRND					
TACTICAL					

7. CONTINGENCY: **Considerations:** *If primary options fail, what actions can be implemented in conjunction with primary evacuation method? Be thinking ahead.*

8. ADDITIONAL INFORMATION: *Updates/Changes, etc.*

REMEMBER: Confirm ETA's of resources ordered. Act according to your level of training. Be Alert. Keep Calm. Think Clearly. Act Decisively.

MEDICAL PLAN (ICS 206 WF)

Medical Incident Report

FOR ALL MEDICAL EMERGENCIES: IDENTIFY ON SCENE INCIDENT COMMANDER BY NAME AND POSITION AND ANNOUNCE "MEDICAL EMERGENCY" TO INITIATE RESPONSE FROM IMT COMMUNICATIONS/DISPATCH.

Use items one through nine to communicate situation to communications/dispatch.

1. CONTACT COMMUNICATIONS/DISPATCH

Ex: "Communications, Div. Alpha. Stand-by for Priority Medical Incident Report." (If life threatening request designated frequency be cleared for emergency traffic.)

2. INCIDENT STATUS: Provide incident summary and command structure.

Nature of Injury/Illness		<i>Describe the injury (Ex: Broken leg with bleeding)</i>
Incident Name		<i>Geographic Name + "Medical" (Ex: Trout Meadow Medical)</i>
Incident Commander		<i>Name of IC</i>
Patient Care		<i>Name of Care Provider (Ex: EMT Smith)</i>

3. INITIAL PATIENT ASSESSMENT: Complete this section for each patient. This is only a brief, initial assessment. Provide additional patient info after completing this 9 Line Report.

Number of Patients:	Male / Female	Age:	Weight:
Conscious? <input type="checkbox"/> YES <input type="checkbox"/> NO = MEDEVAC!			
Breathing? <input type="checkbox"/> YES <input type="checkbox"/> NO = MEDEVAC!			
Mechanism of Injury: <i>What caused the injury?</i>			
Lat/Long (Datum WGS84) <i>Ex: N 40° 42.45' x W 123° 03.24'</i>			

4. SEVERITY OF EMERGENCY, TRANSPORT PRIORITY

SEVERITY	TRANSPORT PRIORITY
<input type="checkbox"/> URGENT-RED Life threatening injury or illness. <i>Ex: Unconscious, difficulty breathing, bleeding severely, 2° – 3° burns more than 4 palm sizes, heat stroke, disoriented.</i>	Ambulance or MEDEVAC helicopter. Evacuation need is IMMEDIATE.
<input type="checkbox"/> PRIORITY-YELLOW Serious Injury or illness. <i>Ex: Significant trauma, not able to walk, 2° – 3° burns not more than 1-2 palm sizes.</i>	Ambulance or consider air transport if at remote location. Evacuation may be DELAYED.
<input type="checkbox"/> ROUTINE-GREEN Not a life threatening injury or illness. <i>Ex: Sprains, strains, minor heat-related illness.</i>	Non-Emergency. Evacuation considered Routine of Convenience.

5. TRANSPORT PLAN:

Air Transport: (Agency Aircraft Preferred)

<input type="checkbox"/> Helispot	<input type="checkbox"/> Short-haul/Hoist	<input type="checkbox"/> Life Flight	<input type="checkbox"/> Other
Ground Transport:			
<input type="checkbox"/> Self-Extract	<input type="checkbox"/> Carry-Out	<input type="checkbox"/> Ambulance	<input type="checkbox"/> Other

6. ADDITIONAL RESOURCE/EQUIPMENT NEEDS:

<input type="checkbox"/> Paramedic/EMT(s)	<input type="checkbox"/> Crew(s)	<input type="checkbox"/> SKED/Backboard/C-Collar
<input type="checkbox"/> Burn Sheet(s)	<input type="checkbox"/> Oxygen	<input type="checkbox"/> Trauma Bag
<input type="checkbox"/> Medication(s)	<input type="checkbox"/> IV/Fluid(s)	<input type="checkbox"/> Cardiac Monitor/AED
<input type="checkbox"/> Other (i.e. splints, rope rescue, wheeled litter)		

7. COMMUNICATIONS:

Function	Channel Name/Number	Receive (Rx)	Tone/NAC *	Transmit (Tx)	Tone/NAC *
<i>Ex: Command</i>	<i>Forest Rpt, Ch. 2</i>	<i>168.3250</i>	<i>110.9</i>	<i>171.4325</i>	<i>110.9</i>
COMMAND					
AIR-TO-GRND					
TACTICAL					

*(NAC for digital radio system)

8. EVACUATION LOCATION:

Lat/Long (Datum WGS84) <i>EX: N 40 42.45' x W 123 03.24'</i>	
Patient's ETA to Evacuation Location:	

Considerations: If primary options fail, what actions can be implemented in conjunction with primary evacuation method? Be thinking ahead...

REMEMBER: Confirm ETA's of resources ordered
Act according to your level of training
Be Alert. Keep Calm. Think Clearly. Act Decisively.