

# Woodbury Fire

AZ-TNF-000579


P3L951



## Incident Action Plan

June 11th, 2019

0600 - 2000

<b>INCIDENT OBJECTIVES</b>	<b>1. INCIDENT NAME</b> Woodbury	<b>2. DATE</b> 6/10/2019	<b>3. TIME</b> 1800
<b>4. OPERATIONAL PERIOD (DATE/TIME)</b> 6/11/2019, 0600-2000			
<b>5. GENERAL CONTROL OBJECTIVES</b>  Incident Objectives: <ul style="list-style-type: none"> <li>• Plan and implement management actions that fully provide for personnel and public safety.</li> <li>• Implement strategies and tactics that commit responders only to operations where and when they can be successful, and under conditions where important values actually at risk are protected with the least exposure necessary.</li> <li>• Maintain and develop partnerships and relationships with adjacent agency staff, cooperators, permittees, and stakeholders.</li> <li>• Provide regular and timely public information about the fire and related smoke to area information outlets.</li> <li>• Minimize spread on Arizona State Trust Land and private lands.</li> <li>• Minimize impacts to surrounding areas including Queen Valley and values at risk including JF Ranch, Quarter Circle Ranch, Rogers Trough Trail improvements as well as infrastructure including APS and SRP 500Kv lines transmission lines.</li> </ul>			
<b>7. WEATHER FORECAST FOR OPERATIONAL PERIOD</b> See attached.			
<b>8. GENERAL SAFETY MESSAGE</b> L.C.E.S. Utilize this tool for all of your operations IA., mop-up, rehab, snags, driving, etc. Discuss how it can be used for any operation.			
<b>9. Attachments (☑ If attached)</b> <input checked="" type="checkbox"/> Organization List (ICS 203) <input checked="" type="checkbox"/> Medical Plan (ICS 206) <input checked="" type="checkbox"/> Unit Log 214 <input checked="" type="checkbox"/> Weather Forecast <input type="checkbox"/> _____ <input checked="" type="checkbox"/> Assignment List (ICS 204) <input type="checkbox"/> _____ <input checked="" type="checkbox"/> Safety Message <input type="checkbox"/> _____ <input checked="" type="checkbox"/> Communications Plan (ICS 205) <input type="checkbox"/> _____			
<b>10. PREPARED BY (PLANNING SECTION CHIEF)</b> Dea Funka, PSC3 (t)	<b>11. APPROVED BY (INCIDENT COMMANDER)</b> 		

ICS Form 203 ORGANIZATION ASSIGNMENT LIST		1. INCIDENT NAME Woodbury	2. DATE PREPARED 06/10/2019	3. TIME PREPARED 1800
5. INCIDENT COMMAND STAFF		4. OPERATIONAL PERIOD (DATE/TIME) <b>06/11/2019, 0600-2000</b>		
Position	Name	9. OPERATIONS SECTION		
INCIDENT COMMANDER	ROB ROY WILLIAMS; ROB DINTAMAN (t)	CHIEF	BRYANT MCGEE	
DEPUTY	NICK CASTRO	PLANNING OPS		
SAFETY OFFICER	RUSSELL COPP; JON MCLAUGHLIN (t)			
INFORMATION OFFICER	DOLORES GARCIA			
LIAISON OFFICER				
HRSP				
6. AGENCY REPRESENTATIVES		BRANCH DIRECTOR		
		DIVISION/GROUP	A	
		DIVISION/GROUP	R	JOHN JOHANSON CARLOS PAYAN (t)
AGENCY	NAME	DIVISION/GROUP	Z	MICHAEL QUIROZ DERRICK YOUNGERMAN (t)
USFS	ANDY MANDELL	DIVISION/GROUP		
USFS	ROCKY GILBERT	DIVISION/GROUP		
USFS		DIVISION/GROUP		
USFS		DIVISION/GROUP		
		DIVISION/GROUP		
		DIVISION/GROUP		
		TASK FORCE LEADER		
7. PLANNING SECTION				
CHIEF	CARRIE DENNETT; DEA FUNKA (t)			
DEPUTY				
RESOURCES UNIT				
SITUATION UNIT				
DOCUMENTATION UNIT				
DEMOBILIZATION UNIT				
STATUS CHECK IN	JOANNE BARRINGER (t)			
READ				
TNSP				
FBAN				
GISS	FRANK WILLIAMS			
CTSP				
8. LOGISTICS SECTION				
CHIEF	DARBY STARR; MIKE MARTIN (t)			
DEPUTY				
A. SUPPORT BRANCH		10. AIR OPERATIONS BRANCH		
SECURITY		AIR OPERATIONS BR. DIR.		
SUPPLY UNIT		AIR TACTICAL GROUP SUP.		
FACILITIES UNIT	STEVE BIRD	AIR SUPPORT GROUP SUP.		
ORDERING MANAGER	NATE HALE (t)	HELICOPTER COORDINATOR		
B. SERVICE BRANCH		AIR TANKER/FIXED WING CRD.		
COMMUNICATIONS UNIT		11. FINANCE		
MEDICAL UNIT	SELINA BLISS	CHIEF	TONY BEARD	
FOOD UNIT	TIM DARBY	DEPUTY		
BASE CAMP MANAGER		TIME UNIT	SHANNON KELLY	
		PROCUREMENT UNIT		
		COMPENSATION/CLAIMS UNIT		
		PERSONNEL TIME	BIANCA SPILDE	
		COST UNIT		
Prepared By (Resources Unit) DEA FUNKA				

## Woodbury

National Weather Service Phoenix

2019-06-10 1:57 PM MST

Spot Forecast for Woodbury...Tonto NF  
National Weather Service Phoenix AZ  
Issued by National Weather Service Tucson AZ  
156 PM MST Mon Jun 10 2019

Forecast is based on forecast start time of 1400 MST on June 10.  
If conditions become unrepresentative...contact the National Weather Service.

### .DISCUSSION...

Very hot temperatures will prevail at the fire sites for the next several days as current humidity levels gradually decrease. Winds through this evening will be the greatest concern with increasing southeast gusts this afternoon. The potential for thunderstorms into early this evening well east of the fire site may create outflow winds that could impact operations early this evening.

Outlook: Wednesday will be the hottest day of the week with Excessive Heat Warnings in effect. Much stronger winds Thursday will create an enhanced fire danger during much of the day.

...Thunderstorms imply gusty winds...

Note...Additional Fire Weather Forecast information can be found in the Area Forecast Discussion. See product PHXAFDPSR.

### .TONIGHT...

Sky/weather.....Mostly clear.  
CWR.....0 percent.  
Min temperature.....68-72.  
Max humidity.....36-49 pct.  
Wind (20 ft).....South winds 6 to 12 mph in the evening with potential gusts 25 mph or greater for brief periods if storm outflows develop. Becoming east 8 to 15 mph with gusts to around 20 mph after midnight.

### .TUESDAY...

Sky/weather.....Mostly sunny.  
CWR.....0 percent.  
Max temperature.....98-102.  
Min humidity.....13-18 pct.  
Wind (20 ft).....East winds 5 to 12 mph with gusts to around 16 mph in the morning becoming southwest 6 to 11 mph in the afternoon.

### .TUESDAY NIGHT...

Sky/weather.....Mostly clear.  
CWR.....0 percent.  
Min temperature.....70-74.  
Max humidity.....25-30 pct.  
Wind (20 ft).....West winds 5 to 8 mph in the evening becoming northeast 5 to 6 mph after midnight.

# HEALTH AND SAFETY MESSAGE

Woodbury Fire

06/11/19

...EXCESSIVE HEAT WARNING IN EFFECT FROM 10 AM TUESDAY TO 8 PM  
MST THURSDAY...

- \* WHERE...Portions of south central Arizona, including the Phoenix Metro Area.
- \* IMPACTS...Increase in heat related illnesses, including heat cramps, heat exhaustion, and heat stroke. Heat stroke can lead to death.
- \* THREAT...Very High HeatRisk. Afternoon temperatures 107 to 113. Overnight lows in the lower 80s.

Recognize the signs and symptoms of heat-related illness. Early signs include thirst and muscle cramps. Heat exhaustion may include: cool, moist, pale skin; headache; dizziness; weakness or exhaustion; nausea. The most serious illness is heat stroke, which may include: vomiting; confusion; throbbing headache; decreased alertness or loss of consciousness; high body temperature (above 105F); hot, dry skin; rapid, weak pulse; rapid, shallow breathing; seizures.

Heat stroke can be DEADLY. Treat as an emergency and call 9 1 1.

---

## Lessons Learned Center Heat Stress Study



USE THE QR CODE TO PULL UP THE ENTIRE DOCUMENT AND READ MORE AT  
[WILDFIRELESSONS.NET](http://WILDFIRELESSONS.NET)

<b>DIVISION ASSIGNMENT LIST</b>		1. Branch		2. Division/Group <b>A</b>			
3. Incident Name <b>Woodbury</b>		4. Operational Period Date: <b>06/11/19</b> Time: <b>0600-2000</b>					
5. Operations Personnel							
Operations Chief	<b>Bryant McGee</b>		Division/Group Supervisor				
Branch Director			Safety				
6. Resources Assigned This Period							
Strike Team/Task Force/ Resource Designator	Leader	Number Persons	Trans Needed	Drop Off PT/Time	Pick Up PT/Time		
<b>UNSTAFFED</b>							
7. Control Operations							
8. Special Instructions							
9. Division/Group Communication Summary							
Function	Frequency	System	Channel	Function	Frequency	System	Channel
Command							
Tactical							
Prepared By (Resource Unit Leader) <b>Dea Funka</b>		Approved By (Planning Sect. Ch.) <b>Carrie Dennett</b>		Date <b>6/10/19</b>		Time <b>1800</b>	



<b>DIVISION ASSIGNMENT LIST</b>		1. Branch		2. Division/Group <b>R</b>			
3. Incident Name <b>Woodbury</b>		4. Operational Period Date: <b>06/11/19</b> Time: <b>0600-2000</b>					
5. Operations Personnel							
Operations Chief	<b>Bryant McGee</b>		Division/Group Supervisor	<b>John Johanson; Carlos Payan (t)</b>			
Branch Director			Safety				
6. Resources Assigned This Period							
Strike Team/Task Force/ Resource Designator	Leader	Number Persons	Trans Needed	Drop Off PT/Time	Pick Up PT/Time		
HC1 Geronimo IHC	J. Hostetler	20	N				
HC1 Mesa IHC	P. Moore	19	N				
HC1 Valyermo IHC			N				
HC2 Perryville	J. Barreras	20	N				
ENG3 TNF E1228		5	N				
ENG6 STATE E261	J. Ottman	4	N				
ENG6 E632		4	N				
7. Control Operations							
Scout for opportunities to construct containment lines while ensuring for fire fighter and public safety.							
8. Special Instructions							
9. Division/Group Communication Summary							
Function	Frequency	System	Channel	Function	Frequency	System	Channel
Command							
Tactical							
Prepared By (Resource Unit Leader) <b>Dea Funka</b>		Approved By (Planning Sect. Ch.) <b>Carrie Dennett</b> <i>CAS</i>		Date <b>6/10/19</b>	Time <b>1800</b>		

DIVISION ASSIGNMENT LIST		1. Branch		2. Division/Group <b>Z</b>			
3. Incident Name <b>Woodbury</b>		4. Operational Period Date: <b>06/11/19</b> Time: <b>0600-2000</b>					
5. Operations Personnel							
Operations Chief	<b>Bryant McGee</b>		Division/Group Supervisor		<b>Watson; Youngerman (t)</b>		
Branch Director			Safety				
6. Resources Assigned This Period							
Strike Team/Task Force/ Resource Designator	Leader	Number Persons	Trans Needed	Drop Off PT/Time	Pick Up PT/Time		
HC1 Payson IHC	M. Schinstock	20	N				
7. Control Operations							
Scout for opportunities to construct containment lines while ensuring for fire fighter and public safety.							
8. Special Instructions							
9. Division/Group Communication Summary							
Function	Frequency	System	Channel	Function	Frequency	System	Channel
Command							
Tactical							
Prepared By (Resource Unit Leader)		Approved By (Planning Sect. Ch.)		Date		Time	
<b>Dea Funka</b>		<b>Carrie Dennett</b>		<b>6/10/19</b>		<b>1800</b>	



<b>(Group 3) Tonto South Zone</b>						
<i>CH</i>	<i>Band</i>	<i>Name</i>	<i>RX</i>	<i>RX CG</i>	<i>TX</i>	<i>TX CG</i>
1	N	FN1	b7e & b7f		b7e & b7f	
2	N	FN2				
3	N	ADMIN				
4	N	A/G 27				
5	N	A/G 61				
6	N	A/G 19				
7	N	COMMON				
8	N	VFIRE21				
9	N	TAC 1				
10	N	TAC 2				
11	N	TAC 3				
12	N	MCSO		b7e & b7f		
13	N	WHT TANKS				
14	N	BLM TAC 2				
15	W	NOAA				
16	N	AIR GUARD				

<b>UCG List</b>		
<i>Numeric</i>	<i>Tone</i>	<i>Repeater</i>
1	b7e & b7f	Humboldt
2		Signal
3		Ord
4		Diamond
5		Aztec
6		Bronco
7		Portable Repeater
Bronco Repeater only on FN2 & ADMIN.		
Two Portables: FN1 Portable and FN2 Portable.		

## MEDICAL PLAN (ICS 206 WF)

<b>1. Incident/Project Name</b>		<b>2. Operational Period</b>				
Woodbury Fire		June 11, 2019 – Day Operational Period				
<b>3. Ambulance Services</b>						
Name	Complete Address	Phone & EMS Frequency		Advanced Life Support (ALS) Yes      No		
Ambulance	Incident Ambulance	Radio - Tac on Ground/Command		X		
AMR Ambulance	Dispatched from Florence	Dispatch via 911		X		
<b>4. Air Ambulance Services</b>						
Name	Phone	Type of Aircraft & Capability				
Native Air - Native 1 from Mesa Native 7 from Payson	Dispatch via 911 (800-642-7828 for emergency dispatch)	Commercial Air Ambulance: A-Star. Advance Life Support (ALS) Nurse and Paramedic. Day and night capable.				
Air Evac (PHI Air Medical) From Deer Valley, Mesa, or San Tan Valley	Dispatch via 911 (800-321-9522 for emergency dispatch)	Commercial Air Ambulance: A-Star. Advance Life Support (ALS) Nurse and Paramedic. Day and night capable.				
DPS Ranger	Dispatch via 911 (623-582-0911 for emergency dispatch)	DPS Air Rescue: Bell 407. ALS Paramedic. Short Haul (Ranger 1) and Hoist Capable. Day and night capable.				
<b>5. Hospitals</b>						
Name Complete Address	GPS Datum – WGS 84 Coordinate Standard Degrees Decimal Minutes DD° MM.MMM' N - Lat DD° MM.MMM' W -Long	Travel Time Air      Gnd		Phone	Helipad Yes No	Level of Care Facility
Peralta Urgent Care of Gold Canyon 6740 S Kings Ranch Rd Gold Canyon, AZ 85118 Open 0800 to 1800		NA	20 min	(480) 616-2500	X	Urgent Care
Mountain Vista Medical Center 1301 S. Crismon Rd Mesa, AZ 85209	Lat: N 33° 23.49'	NA	40 min	Main: (480) 358-6100	X	Level 3 Trauma
	Long: W 111° 36.726'					
	Elevation:					
HonorHealth Scottsdale Osborn Medical Center 7400 E Osborn Rd Scottsdale, AZ 85254	Lat: N 33° 29.347'	40 min	1.5 hrs	Main: (480) 882-4000	X	Level 1 Trauma
	Long: W 111° 55.325'					
	Elevation:					
Maricopa Medical Center 2601 E Roosevelt St Phoenix, AZ 85008	Lat: N 33° 27.39'	35 min	1 hr	Main: (602) 344-5011 ER: (602) 344-5411 Option 9	X	Level 1 Trauma and Burn Center
	Long: W 112° 01.46'					
	Elevation:					

## MEDICAL PLAN (ICS 206 WF)

6. Division   Branch   Group	Area Location Capability			
<b>DIV A</b>	<b>EMS Responders &amp; Capability</b>			
	<b>Equipment Available on Scene</b>	Ground and/or air ambulance as requested		
	<b>Medical Emergency Channel</b>	Tac on Ground/Command Channel		
	<b>ETA for Ambulance to Scene</b>			
	<b>Air:</b>	60 minutes		
	<b>Ground:</b>	Varies		
	<b>Approved Helispot</b>			
	<b>Lat:</b>			
<b>Long:</b>				
<b>DIV R</b>	<b>EMS Responders &amp; Capability</b>			
	Medic 1 - Fenton EMP-F (ALS) & Herrick EMP-F (ALS) <i>Daisy Mountain Fire – Battalion 141</i> UTV with stokes basket in trailer			
	<b>Equipment Available on Scene</b>	Ground and/or air ambulance as requested		
	<b>Medical Emergency Channel</b>	Tac on Ground/Command Channel		
	<b>ETA for Ambulance to Scene</b>			
	<b>Air:</b>	60 minutes		
	<b>Ground:</b>	Varies		
	<b>Approved Helispot</b>			
<b>Lat:</b>				
<b>Long:</b>				
<b>DIV Z</b>	<b>EMS Responders &amp; Capability</b>			
	<b>Equipment Available on Scene</b>			
	Ground and/or air ambulance as requested			
	<b>Medical Emergency Channel</b>	Tac on Ground/Command Channel		
	<b>ETA for Ambulance to Scene</b>			
	<b>Air:</b>	60 minutes		
	<b>Ground:</b>	Varies		
	<b>Approved Helispot</b>			
<b>Lat:</b>				
<b>Long:</b>				
<b>8. Prepared By (Medical Unit Leader)</b>		<b>9. Date/Time</b>	<b>10. Reviewed By (Safety Officer)</b>	<b>11. Date/Time</b>
Selina Bliss MEDL (928) 925-5642		June 10, 2019 1815	Russell Copp – SOF- 2 Jon McLaughlin - SOFR	June 10, 2019 1830

## MEDICAL PLAN (ICS 206 WF)

Medical Incident Report																													
<p><b>FOR A NON-EMERGENCY INCIDENT, WORK THROUGH CHAIN OF COMMAND TO REPORT AND TRANSPORT INJURED PERSONNEL AS NECESSARY.</b></p> <p><b>FOR A MEDICAL EMERGENCY: IDENTIFY ON SCENE INCIDENT COMMANDER BY NAME AND POSITION AND ANNOUNCE "MEDICAL EMERGENCY" TO INITIATE RESPONSE FROM IMT COMMUNICATIONS/DISPATCH.</b></p>																													
<p><b>Use the following items to communicate situation to communications/dispatch.</b></p>																													
<p><b>1. CONTACT COMMUNICATIONS / DISPATCH</b> (Verify correct frequency prior to starting report)  <i>Ex: "Communications, Div. Alpha. Stand-by for Emergency Traffic."</i></p> <p><b>2. INCIDENT STATUS:</b> Provide incident summary (including number of patients) and command structure.  <i>Ex: "Communications, I have a Red priority patient, unconscious, struck by a falling tree. Requesting air ambulance to Forest Road 1 at (Lat/Long.) This will be the Trout Meadow Medical, IC is TFLD Jones. EMT Smith is providing medical care."</i></p>																													
Severity of Emergency / Transport Priority	<input type="checkbox"/> <b>RED / PRIORITY 1</b> Life or limb threatening injury or illness. Evacuation need is <b>IMMEDIATE</b> <i>Ex: Unconscious, difficulty breathing, bleeding severely, 2° - 3° burns more than 4 palm sizes, heat stroke, disoriented.</i> <input type="checkbox"/> <b>YELLOW / PRIORITY 2</b> Serious Injury or illness. Evacuation may be <b>DELAYED</b> if necessary. <i>Ex: Significant trauma, unable to walk, 2° - 3° burns not more than 1-3 palm sizes.</i> <input type="checkbox"/> <b>GREEN / PRIORITY 3</b> Minor Injury or illness. <b>Non-Emergency transport</b> <i>Ex: Sprains, strains, minor heat-related illness.</i>																												
Nature of Injury or Illness & Mechanism of Injury			<i>Brief Summary of Injury or Illness (Ex: Unconscious, Struck by Falling Tree)</i>																										
Transport Request			<i>Air Ambulance / Short Haul/Hoist Ground Ambulance / Other</i>																										
Patient Location			<i>Descriptive Location &amp; Lat. / Long. (WGS84)</i>																										
Incident Name			<i>Geographic Name + "Medical" (Ex: Trout Meadow Medical)</i>																										
On-Scene Point of Contact			<i>Name of on-scene POC of Incident within an Incident (Ex: TFLD Jones)</i>																										
Patient Care			<i>Name of Care Provider (Ex: EMT Smith)</i>																										
<p><b>3. INITIAL PATIENT ASSESSMENT:</b> Complete this section for each patient as applicable (start with the most severe patient)</p> <p>Patient Assessment: See IRPG page 106</p> <p>Treatment:</p>																													
<p><b>4. TRANSPORT PLAN:</b></p> <p>Evacuation Location (if different): (Descriptive Location (drop point, intersection, etc.) or Lat. / Long.) Patient's ETA to Evacuation Location:</p> <p>Helispot / Extraction Site Size and Hazards:</p>																													
<p><b>5. ADDITIONAL RESOURCES / EQUIPMENT NEEDS:</b></p> <p><i>Example: Paramedic/EMT, Crews, Immobilization Devices, AED, Oxygen, Trauma Bag, IV/Fluid(s), Splints, Rope rescue, Wheeled litter, HAZMAT, Extrication</i></p>																													
<p><b>6. COMMUNICATIONS: Identify State Air/Ground EMS Frequencies and Hospital Contacts as applicable</b></p> <table border="1" style="width: 100%; border-collapse: collapse;"> <thead> <tr> <th style="width: 15%;">Function</th> <th style="width: 20%;">Channel Name/Number</th> <th style="width: 15%;">Receive (RX)</th> <th style="width: 15%;">Tone/NAC *</th> <th style="width: 15%;">Transmit (TX)</th> <th style="width: 20%;">Tone/NAC *</th> </tr> </thead> <tbody> <tr> <td>COMMAND</td> <td></td> <td></td> <td></td> <td></td> <td></td> </tr> <tr> <td>AIR-TO-GRND</td> <td></td> <td></td> <td></td> <td></td> <td></td> </tr> <tr> <td>TACTICAL</td> <td></td> <td></td> <td></td> <td></td> <td></td> </tr> </tbody> </table>						Function	Channel Name/Number	Receive (RX)	Tone/NAC *	Transmit (TX)	Tone/NAC *	COMMAND						AIR-TO-GRND						TACTICAL					
Function	Channel Name/Number	Receive (RX)	Tone/NAC *	Transmit (TX)	Tone/NAC *																								
COMMAND																													
AIR-TO-GRND																													
TACTICAL																													
<p><b>7. CONTINGENCY: Considerations:</b> If primary options fail, what actions can be implemented in conjunction with primary evacuation method? Be thinking ahead.</p>																													
<p><b>8. ADDITIONAL INFORMATION:</b> Updates/Changes, etc.</p>																													
<p><b>REMEMBER:</b> Confirm ETA's of resources ordered. Act according to your level of training. Be Alert. Keep Calm. Think Clearly. Act Decisively.</p>																													



# AIR OPERATIONS SUMMARY

Prepared By: R ortlund Prepared Date: 06/10/19 Prepared Time: 2000

1. INCIDENT NAME: Woodbury 2. OPERATIONAL PERIOD DATE: 06/11/19 START TIME: 0700 END TIME: 2000 SUNRISE 0517 SUNSET: 1937

3. REMARKS (Safety Notes, Hazards, Air Operations Special Equipment, etc.):					4. MEDEVAC AIRCRAFT: See Medical Plan		5. TFR:
<p>* Helicopter personnel to be briefed by helibase manager prior to missions:</p> <p>(1) Maintain Good communication with other A/C, and ATGS to maintain separation.                  (2) Be aware of flight conditions that include, dense smoke, and high variable winds.                  (3) Be aware of possible wires, towers, or other structural hazards.</p> <p>** Ground personnel - avoid helicopter and fixed wing water and retardant drops.                  This includes approach and departure paths.                  Thanks for being safe and keep up the good work.                  Remember to drink water to avoid dehydration.</p> <p>***BE AWARE OF FATIGUE, TAKE LONGER BREAKS WHEN FLYING IN SMOKY CONDITIONS.                  ****Report all TFR intrusions to Phx Dispatch, or Helibase as soon as possible.</p>					Special Notes:  Remember:  Watch for Wires		
6. PERSONNEL	NAME	Phone #	7. FREQUENCY	AM	FM	8. FIXED-WING Avail / Type/ Make-Model / FAA N# / Base(s)	
AOBD	Robert Ortlund	b6				AIRTANKERS:	
ASGS						Airtankers/Leadplanes available through Phx Dispatch Airtankers available Gateway Air Tactical Platforms	
ATGS	Dan Eckstien		b7e & b7f			Eckstien 1EG Secondary ATGS as assigned	
Helibase	Goldfield				b7e & b7f		

9. HELICOPTERS (Use Additional Sheets As Necessary)

FAA N#	T Y	MAKE/MODE L	BASE	AVA IL	STA RT	REMARKS	FAA #	T Y	MAKE/MOD EL	BASE	AVAI L	STAR T	REMARKS
1CH	1	CH 47	Falcon	090 0	0800	Water Drops							
6AS	3	Eagle 407	Goldfield	070 0	0800	Recon/ cargo							

10. TASK/MISSION/ASSIGNMENT (Type/Function includes: Air Tactical, Retardant, Recon, Personnel Transport, Water Dropping, S&R, etc.)

TYPE/FUNCTION	NAME OF PERSONNEL OR CARGO (if applic) OR INSTRUCTIONS FOR TACTICAL AIRCRAFT	MISSION AVAIL.	FLY FROM	FLY TO
Air Tactical	ATGS over fire art 0800	0730	IWA	Fire
Retardant Drops	Div Sup to ATGS as approved by ops.	0800	IWA	Fire
Water Drops/Retardant	Div Sup to ATGS as approved by ops.	0900		
Medevac	Contact Air Attack Operations			
Recon	As needed and approved by operations.			
IA	Air Resources will assist with Initial Attack responsibilities through ATGS.			
	AOBD Robert Ortlund			



**IAP Map**  
**Woodbury Fire**  
**AZ-TNF-579**  
**June 11, 2019**

Appx 4500 ac at  
Jul 10, 2019 1815







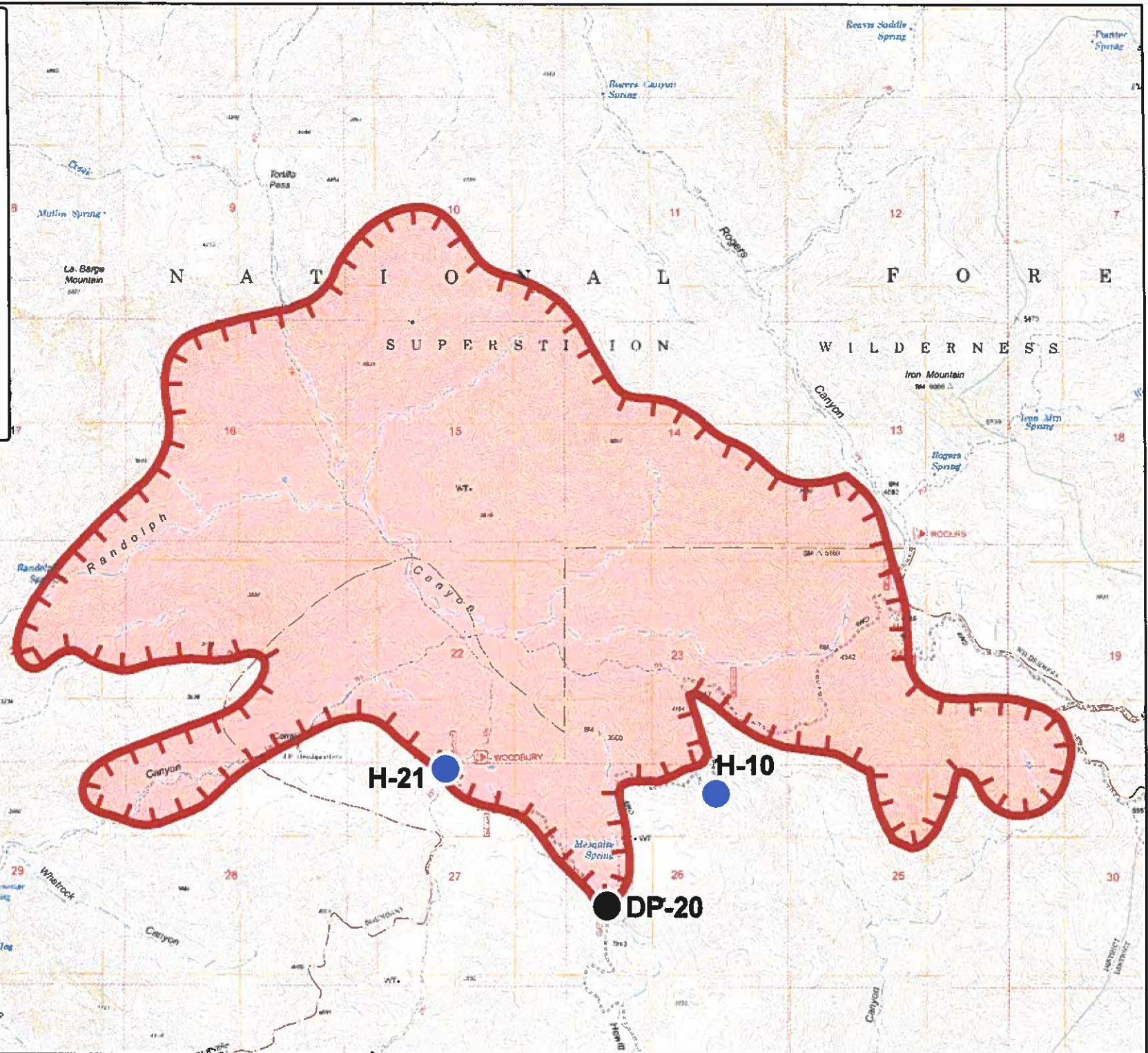
0 0.25 0.5



Miles

**Legend**

-  Drop Point
-  Helispot
-  Uncontrolled Fire Edge
-  Wildfire Daily Fire Perimeter



Frank Williams  
10-Jun-2019 @ 21:06  
Acres from field reports  
WGS84 Lat/Long grid



