



Griffin Incident Decision

Published
08/27/20 12:03

Table of Contents

1. Decision	2
1.1. Decision Summary.....	2
1.2. Incident Information.....	3
1.3. Weather.....	5
1.4. Modeling.....	7
1.5. Risk.....	9
1.6. Benefits.....	15
1.7. Objectives.....	16
1.8. Course of Action.....	24
1.9. Cost.....	46
1.10. Rationale.....	47

1. Decision

1.1. Decision Summary

Decision Information

NAME	VALUE
Published	08/27/2020 12:03 CDT
Estimated Cost	\$12,000,000
Incident Owner(s)	Mary Lata, Adam Bromley, Robb Beery, Dana Bagnoli
Editor(s)	Anthony Madrid, Bryan Bowker, Dan Pitterle, Kelly Jardine, Neil Bosworth
Reviewer(s)	Adam Bromley, Clark Richins, Barry Johnson, Kelly Jardine, Neil Bosworth
Approver(s)	Anthony Madrid, Bryan Bowker
Natl Preparedness Level	5

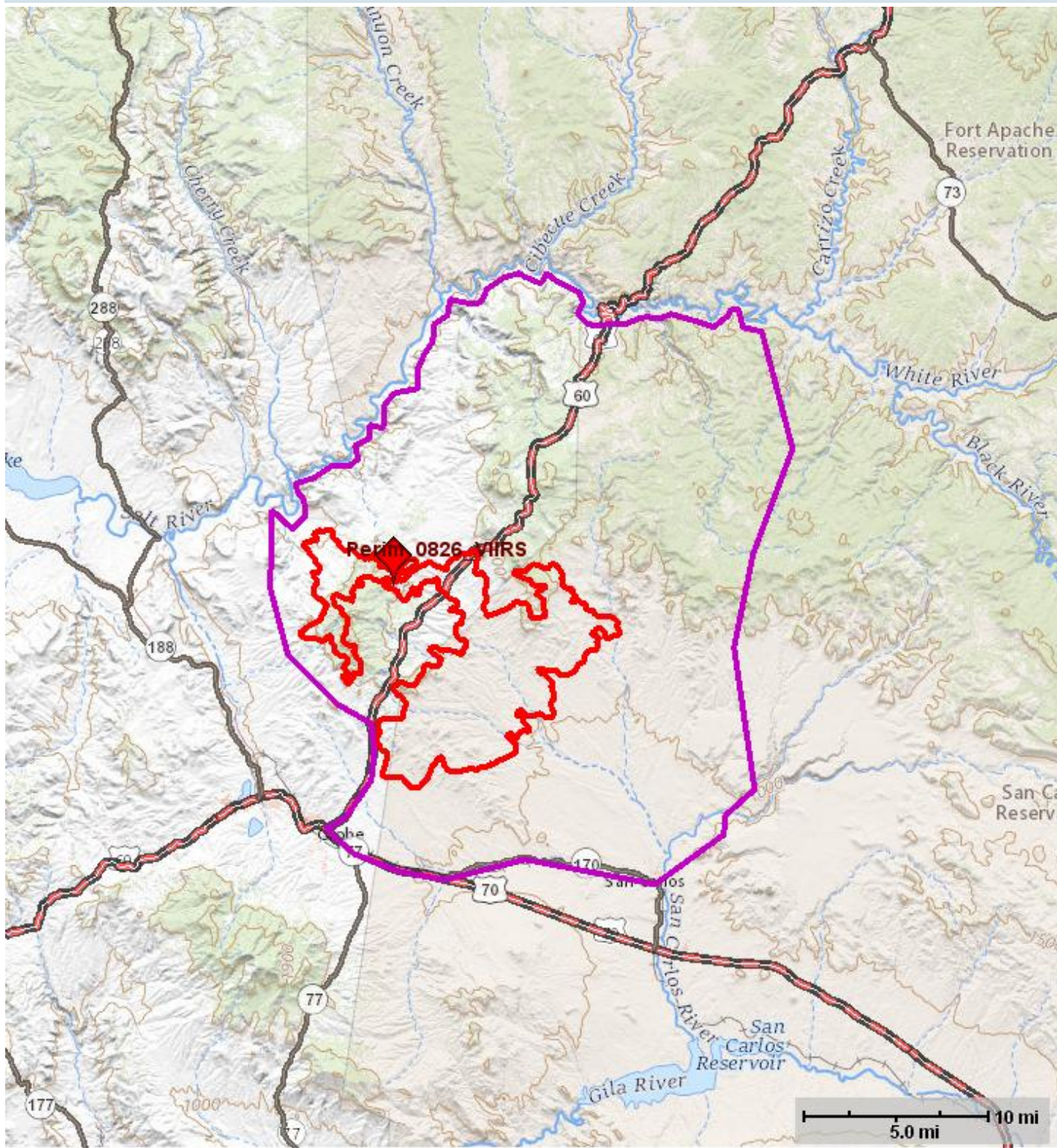
Decision History

Editor Name	Action	Date (CDT)	Comment
Madrid, Anthony	Published	08/27/2020 12:03	
Madrid, Anthony	Approved	08/27/2020 12:03	
Jardine, Kelly	Accepted	08/27/2020 08:27	
Bowker, Bryan	Approved	08/26/2020 13:29	
Beery, Robb	Review Requested	08/26/2020 13:08	
Beery, Robb	Review Requested	08/26/2020 13:06	Please review this Decision. Changes made: Made it a stand alone document, the old one referenced the Salt fire. Added values and MAPs. Updated the Risk Analysis and Org Assessment. Contact me with questions Robb Beery, 928-595-0442, robb_beery@firenet.gov

1.2. Incident Information

Incident Information

NAME	VALUE
Incident Name	Griffin
Unique Fire Identifier	2020-AZTNF-002510
Responsible Unit Name	Tonto National Forest
FireCode	NF4F
P-Code	P3NF4F
Point of Origin	33.58239N / 110.7012 W
Incident Size	60,056acres
Latest WFDSS Perimeter Size	60,056acres
Incident Cause	Natural
Incident Type	Wildfire
Incident Discovery	08/17/2020 18:11
Contained	
Controlled	
Out	
Jurisdictional Unit	AZTNF - Tonto National Forest
Jurisdictional Agency(s)	BIA/Tribal, BLM, USFS, State
Geographic Area (prep level)	Southwest (4)
Owner Name(s)	Mary Lata, Adam Bromley, Robb Beery, Dana Bagnoli



— Fire Perimeters — Planning Areas ◆ Point of Origin

1.3. Weather

Fire Weather Zone Forecast

295
FNUS55 KPSR 260907
FWFPSR
Fire Weather Planning Forecast for Southwest and South-Central
Arizona and Southeast California
National Weather Service Phoenix AZ
207 AM MST Wed Aug 26 2020
.DISCUSSION...
Strong high pressure aloft will persist across the districts today
into Thursday leading to continued very hot temperatures; most of
the hotter desert will reach or exceed the 110 degree mark both
days. Thunderstorms will be rather isolated and mainly impact high
terrain areas east of Phoenix today and Thursday. There may be a
few showers or a stray thunderstorm over the southwest Arizona
desert this morning. Humidity will remain somewhat low with
minimum RH values over the deserts in the 10 to 18 percent range
each day, with maximum RH to climb into the 35 to 55 percent
ballpark. Winds will be on the light side both days.
...Thunderstorms imply gusty winds...
Note...Additional Fire Weather Forecast information can be found
in the Area Forecast Discussion. See product PHXAFDPSR.
AZZ133-262115-
Southern Gila County/Tonto National Forest Foothills-
Southern Tonto NF/West San Carlos BIA/South Portion Ft Apache BIA/
CAZ-
207 AM MST Wed Aug 26 2020
.TODAY...
* Sky/weather.....Mostly sunny. Haze . Slight
chance of showers and thunderstorms in the afternoon.
* Max Temperature.....93-108.
* 24 hr trend.....Little change.
* Min Humidity.....13-18 pct.
* 24 hr trend.....Little RH change.
* Winds - 20 foot...Slope/Valley..Southeast 5 to 10 mph in the
morning becoming southwest in the afternoon.
* Winds...10000 FT MSL.....Light and variable.
* Chance of Precip.....0 percent in the morning becoming
20 percent in the afternoon.
* LAL.....1 in the morning becoming 2 in
the afternoon.
* Haines High Level Index.....4 low potential for large plume
dominated fire growth.
.TONIGHT...
* Sky/weather.....Partly cloudy. Slight chance of
showers and thunderstorms in the evening.
* Min Temperature.....66-84.
* 24 hr trend.....Little change.
* Max Humidity.....33-51 pct.
* 24 hr trend.....Little change.
* Winds - 20 foot...Slope/Valley..East 5 to 15 mph.
* Winds...10000 FT MSL.....West 5 to 15 mph in the evening
becoming northeast after midnight.
* Chance of Precip.....20 percent in the evening
becoming 0 percent after midnight.
* LAL.....2 in the evening becoming 1 after
midnight.
.THURSDAY...
* Sky/weather.....Mostly sunny. Slight chance of
showers and thunderstorms in the afternoon.
* Max Temperature.....93-108.
* 24 hr trend.....Little change.
* Min Humidity.....14-20 pct.
* 24 hr trend.....Little RH change.
* Winds - 20 foot...Slope/Valley..Southeast 5 to 10 mph in the
morning becoming west in the afternoon.
* Winds...10000 FT MSL.....Light and variable.
* Chance of Precip.....0 percent in the morning becoming
10 percent in the afternoon.
* LAL.....1 in the morning becoming 2 in
the afternoon.
* Haines High Level Index.....3 very low potential for large
plume dominated fire growth.
.EXTENDED...
.FRIDAY...Mostly clear. Lows 65-83. Highs 92-106. Northwest winds
5 to 15 mph.
.SATURDAY...Mostly clear. Lows 64-82. Highs 91-104. West winds
5 to 15 mph.
.SUNDAY...Partly cloudy with slight chance of showers and
thunderstorms. Lows 63-82. Highs 87-101. West winds 5 to 15 mph.
.MONDAY...Partly cloudy with slight chance of showers and
thunderstorms. Lows 62-80. Highs 85-99.

Fire Weather Zone Forecast

.TUESDAY...Partly cloudy with slight chance of showers and thunderstorms. Lows 60-79. Highs 85-99.

\$\$

.8 TO 10 DAY OUTLOOK...Wednesday September 2nd through Friday September 4th: Above normal temperatures and below median precipitation.

1.4. Modeling

Near Term (NTFB_0826_WHeat_3D_Globe - Started on 08/26/20 10:00 ended on 08/28/20 21:00)

Near Term Fire Behavior Analysis Information

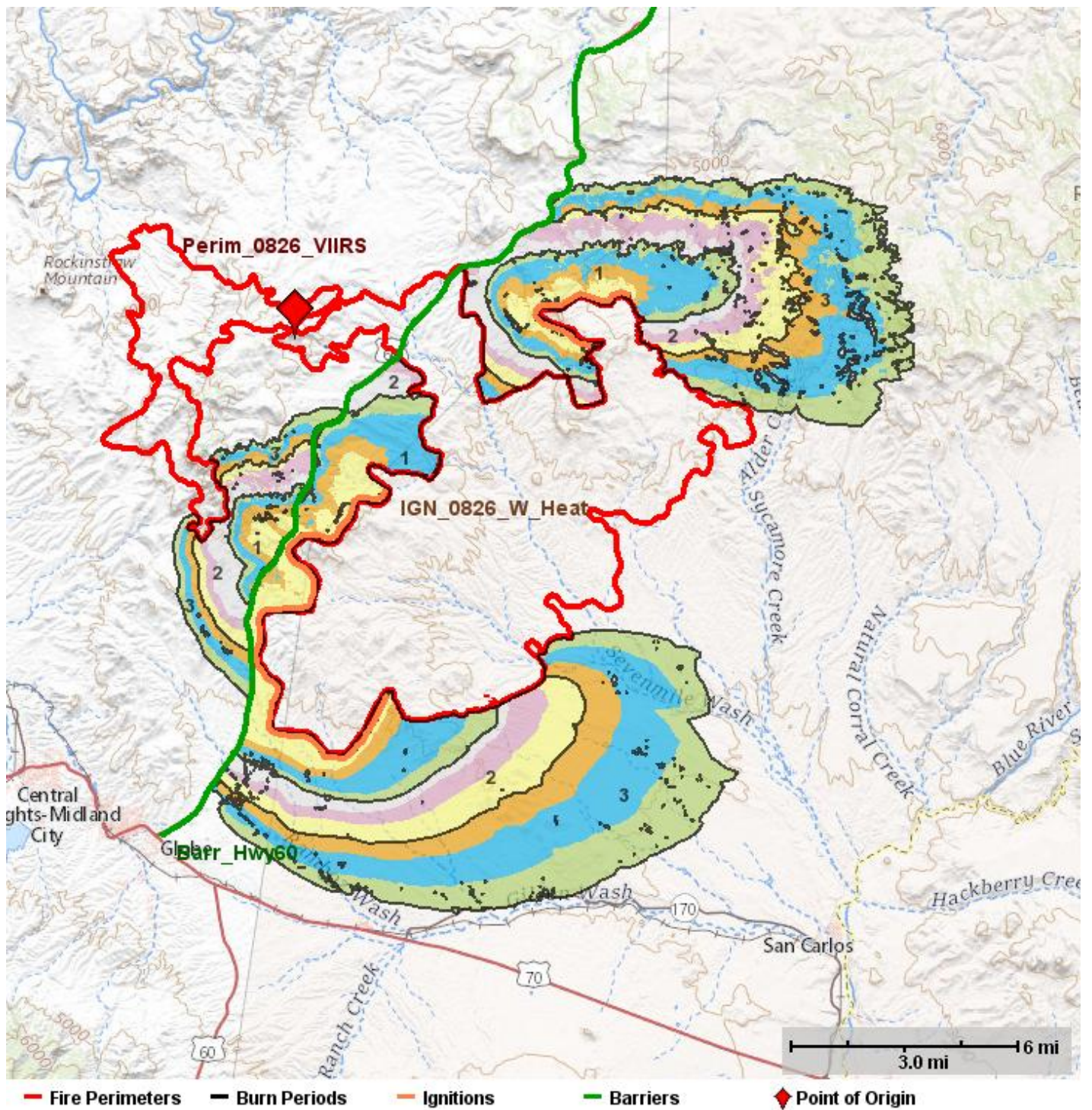
NAME	VALUE
Analysis Name	NTFB_0826_WHeat_3D_Globe

Burn Periods

Date	Start Hour	End Hour	Acres
08/26/2020	10	21	23,026.6
08/27/2020	12	21	24,155.6
08/28/2020	12	21	44,446.8

Time (CDT)	User	Note
08/26/2020 10:47	Beery, Robb	This WFDSS NTFB analysis shows the anticipated fire spread between 08/26 and 08/28. The Globe RAWS was used for weather and fuel models were modified to mimic past fire spread. The ignition was where heat was showing on the west side of the Griffin fire. A Barrier was used on Hwy 60, no suppression was modeled. This shows spotting potential across Hwy 60 south of Winters Ranch. This model shows the effect of the winds acting on the fine fuels over the next three days. Where there is a heavy brush/timber component the fire seems to moderate.

[Near Term Analysis 'NTFB_0826_WHeat_3D_Globe'](#)



1.5. Risk

Relative Risk

NAME	VALUE
Relative Risk	High
Duration	Moderate
Saved By	Beery, Robb
Completed	08/26/2020 11:51 CDT

Relative Risk Notes

The fire is currently active, and has moved quickly where there has been alignment. Thunderstorms in the proximity have only been producing very gusty outflow winds and lightning. If a cell were to drift across the fire with significant rain it would decrease fire activity for a period of time, but not put the fire out. Fire behavior potential is well above average for this time of year because of invasive grasses combined with exceptionally dry and hot conditions.

POTENTIAL DURATION

Current fire behavior will persist until a change in weather alters the fuel conditions. There is no change forecasted for the next 10 days, this year has exhibited very spotty monsoon moisture. Most of the fuels in the planning area are grass and shrub, however to the north there are areas of pine with a heavy brush understory. The duration of this fire depends largely on the weather over the fire - if there are outflow winds, it could move the fire around into heavier fuels, resulting in a longer duration fire. With the speed the fire has been moving a larger box for the fire area has to be considered, this will also increase the fire duration.

Values Notes

NATURAL/CULTURAL RESOURCES AND INFRASTRUCTURE VALUES

Multiple cultural and historical sites including: Old Winters Ranch, Adobe Ranch, Chrysolite, McMillinville

Recreational areas including: Timber Camp, Jones Water, Seneca Lake, San Carlos Lake

Range infrastructure and forage for wildlife and livestock

Multiple ranches throughout the planning area including but not limited to : Johnson Ranch, Anchor 7 Ranch, Winters Ranch, Griffin Ranch

Highways 60 and 70

Mining claim areas

ADOT roadway infrastructure

Carol Mountain Communication site

The community of San Carlos and the Apache Gold Casino

High Desert Middle School

Industrial, Commercial, and residential buildings along Highways 60 and 70

Wildlife Habitat including: Golden Eagle, Gila Topminnow, and in the Salt River, Narrow-headed Gartersnake, Razorback Sucker,

Southwestern Willow Flycatcher

PROXIMITY & THREAT OF FIRE TO VALUES

The fire has crossed Hwy 60 and there is some guardrail damage. Further fire operations along Highway 60 will continue to impact ADOT roadway infrastructure.

Range and wildlife infrastructure including Drinkers, corrals, and fences have been impacted throughout the fire area.

Tribal lands and ranching infrastructure have been impacted and there has been a major smoke impact on the San Carlos community

SOCIAL/ECONOMIC CONCERNS

Highway 60 is currently closed; this is the major connecting highway between Globe/Phoenix and the Mogollon Rim communities of Show Low and Lakeside/Pinetop. This could have significant impacts on local communities who have experienced multiple large fires over the last two years, including evacuations, closures, and air quality impacts. This will decrease tourist visitation for businesses that were already hard hit by closures and evacuations in 2018 and earlier this year.

Air quality impacts have occurred in Globe, San Carlos and other communities near the fire. There are many retirement communities in the area whose residents may be especially vulnerable to air quality impacts. These are likely to continue sporadically, with the location and intensity depending mostly on local winds.

Range infrastructure and loss of forage could have significant impacts on permittees.

Fire has impacted culturally significant tribal lands and there is a potential impact to high value tribal timber stands.

Hazards Notes

FUEL CONDITION

Currently, fuel moisture in manzanita is 52%, and in oak is 70%. Consistent with past years, fuel moistures are currently trending down as per the season.

A wet fall/winter/spring produced a bumper crop of invasive grasses that has provided a surface load of fine fuels that is more contiguous and heavier than is typical.

Record low precipitation and high temperatures mean the fine fuel load is now completely available, and providing means for fire to spread faster and further than is typical.

There is no record of significant fire history in the planning area since the 1970s. Shrubs are mostly decadent and ready to burn, as per the first bullet (above). Where there are shrubs in the planning area, they are mostly about 40 years old, and have sufficient volume and dead/down material to burn.

FIRE BEHAVIOR

Fuels in the fire area are primarily grasses and shrubs. As per the fuel condition discussion above, surface fine fuel loading is allowing fire to move faster and further than is typical. These fuels, combined with steep topography and hot, dry conditions provide the needed ingredients for extreme fire behavior - in this case, high flame lengths in grass and shrubs, and high rates of spread. The higher RH values associated with nearby storms and some RH recovery overnight could slow or stop the fire in places, but with the outflow winds the fire may stay active all night. The fire has exhibited some extreme behavior, and spotty thunderstorms are in the forecast for the next few weeks, so it is possible there would be additional outflow winds from scattered T-storms. If the fire moves into higher elevations, it will move into areas of chaparral and heavier fuels. The outlook for the next 10 days is for continued hot and dry, with RH in the teens, and temperatures averaging 10°F above normal. The fire was first reported at 18:33, and grew to almost 200 acres by this morning. As of the night of August 24th IR shows the fire over 40,000 areas and active on several fronts.

POTENTIAL FIRE GROWTH

The uncertainty of additional fires, lightning, outflow winds, or other weather related variables this time of year increases the variability of potential fire outcomes. Typical winds this time of year would move the fire to the north/northeast/east, and forecasted winds align with that. However, as mentioned above, thunderstorms are expected in the vicinity of the fires over the next few days. As occurred several afternoons the outflow winds pushed the fire front very rapidly to the south.. So there is potential for this fire to become large quickly.

Probability Notes

Typically, the fire season is slowing down at this point, because of monsoonal rains. However, this year the peak of the burning activity may not have occurred yet, and there may still be about 2 ½ months of the fire season left.

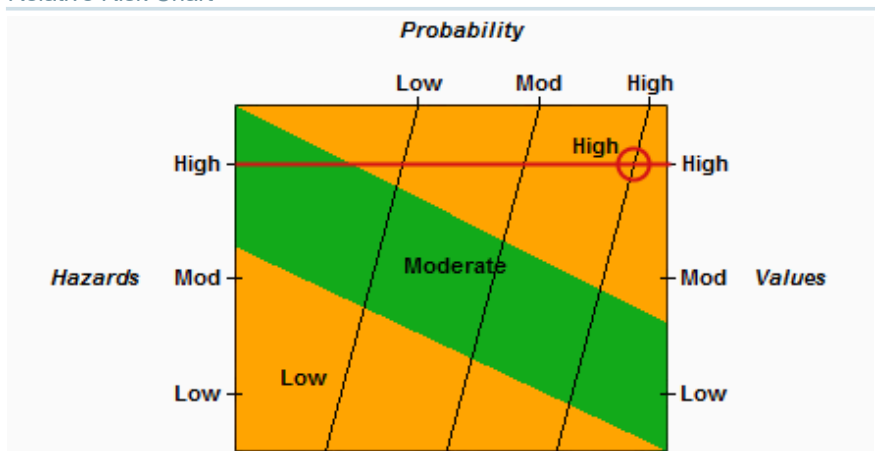
BARRIERS TO FIRE SPREAD

The most dependable barriers around the current fire location are Hwy 60 and Hwy 70. Although the fire has crossed Hwy 60 this still remains the best barrier to fire spread. Also in the northwest corner of the fire area is the Salt River.

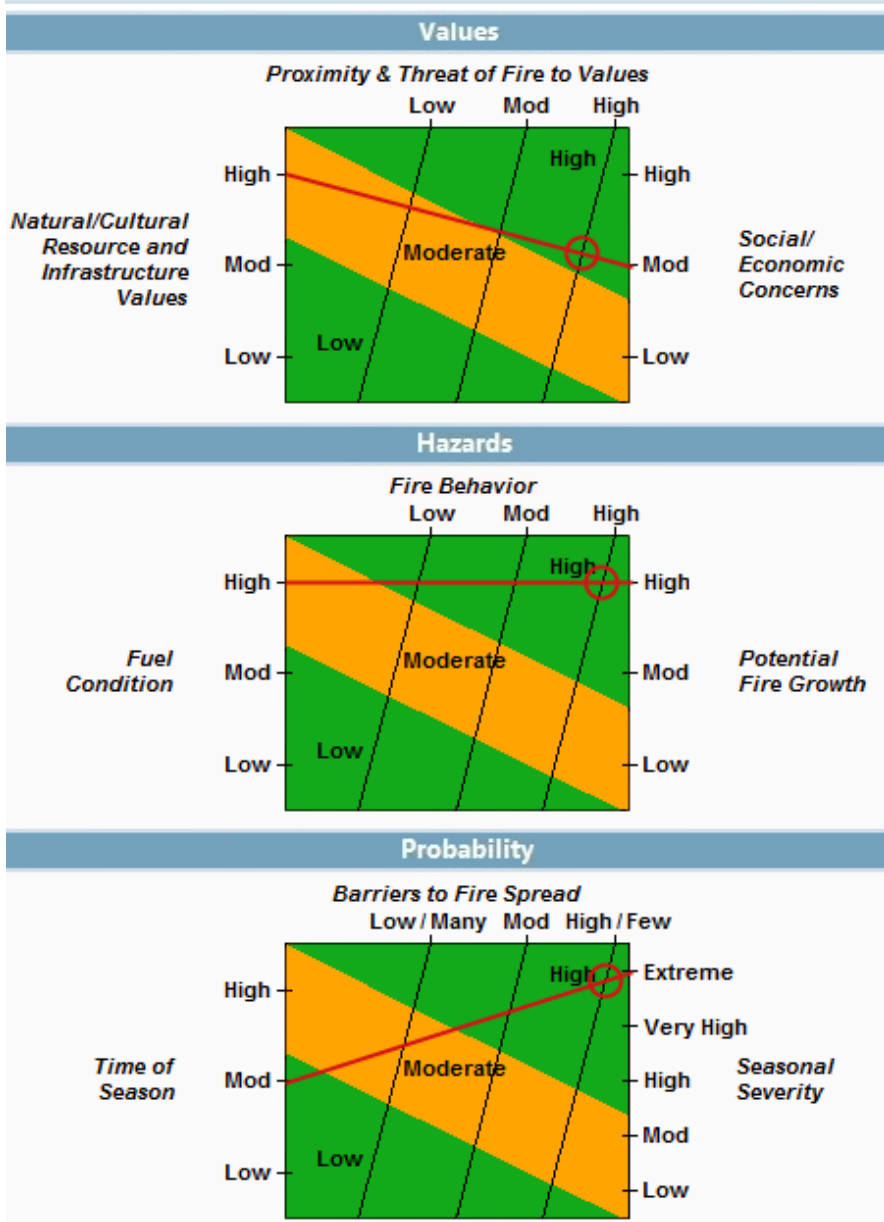
SEASONAL SEVERITY

Current ERCs are at the 95th percentile in the Brush FDRA, and 96th in the Sonoran FDRA. Fuel moisture conditions are described above in 'Fuel Conditions', but are currently low and trending down. Temperatures have been, and will continue to be, about 10° above normal. Precipitation has been much spottier than usual, and currently this is one of the driest Augusts on record. The longer term forecast is for La Nina conditions which, in the southwest, means a dry fall and winter.

Relative Risk Chart



Relative Risk Inputs



Organization Assessment

NAME	VALUE
Unit Recommended Org Type 1	
Saved By	Beery, Robb
Completed	08/26/2020 12:05 CDT

Organization Assessment Notes

This fire is being concurrently managed with the Salt fire by an IMT2. Due to increasing logistical and operational complexity an IMT1 will assume command 08/26 at 20:00.

Relative Risk Notes

The fire is currently active, and has moved quickly where there has been alignment. Thunderstorms in the proximity have only been producing very gusty outflow winds and lightning. If a cell were to drift across the fire with significant rain it would decrease fire activity for a period of time, but not put the fire out. Fire behavior potential is well above average for this time of year because of invasive grasses combined with exceptionally dry and hot conditions.

POTENTIAL DURATION

Current fire behavior will persist until a change in weather alters the fuel conditions. There is no change forecasted for the next 10 days, this year has exhibited very spotty monsoon moisture. Most of the fuels in the planning area are grass and shrub, however to the north there are areas of pine with a heavy brush understory. The duration of this fire depends largely on the weather over the fire - if

there are outflow winds, it could move the fire around into heavier fuels, resulting in a longer duration fire. With the speed the fire has been moving a larger box for the fire area has to be considered, this will also increase the fire duration.

Implementation Difficulty Notes

POTENTIAL FIRE DURATION

Covered above.

INCIDENT STRATEGIES (COURSE OF ACTION) The relative risk assessment for this fire is high. Current actions include point protection of values at risk, indirect and direct actions, and monitoring / confinement of areas that are inaccessible by ground resources, or with few values at risk. Aircraft will be used if and when they are available.

FUNCTIONAL CONCERNS The forest has had multiple large fires this year, and there are increasing numbers of active large fires across the country; resources are already difficult to obtain. Aircraft, in particular, are in demand across the west, and will be difficult to obtain, though in the extreme terrain in the vicinity of the Griffin Fire, it would be the only option in some areas. The fire has crossed Highway 60, and is threatening private ranches and mining operations. Because resources are limited at this time (nationally, we're at PL5), the needed organization will be reduced, and span of control will be less than in a more typical year. Currently, the Griffin Fire is one of two fires being managed as a Group of Incidents as the Tonto Central Group. This complicates the management of resources and the fires. There continue to be multiple incidents and high levels of initial attack on the forest and adjacent area.

Socio/Political Concerns Notes

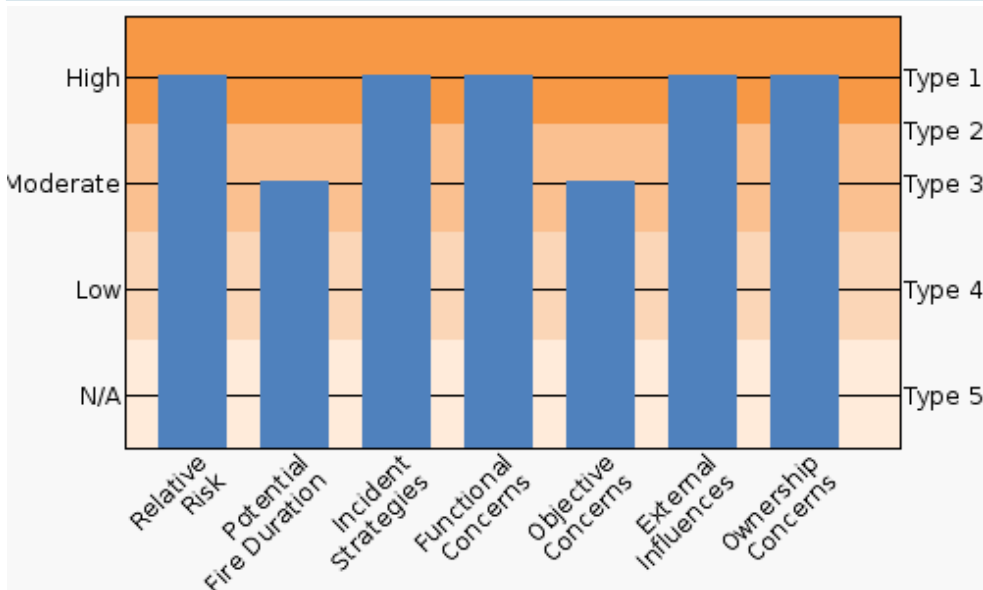
Highway 60 is currently closed; this is the major connecting highway between Globe/Phoenix and the Mogollon Rim communities of Show Low and Lakeside/Pinetop. This could have significant impacts on local communities who have experienced multiple large fires over the last two years, including evacuations, closures, and air quality impacts. This will decrease tourist visitation for businesses that were already hard hit by closures and evacuations in 2018 and earlier this year.

Air quality impacts have occurred in Globe, San Carlos and other communities near the fire. There are many retirement communities in the area whose residents may be especially vulnerable to air quality impacts. These are likely to continue sporadically, with the location and intensity depending mostly on local winds.

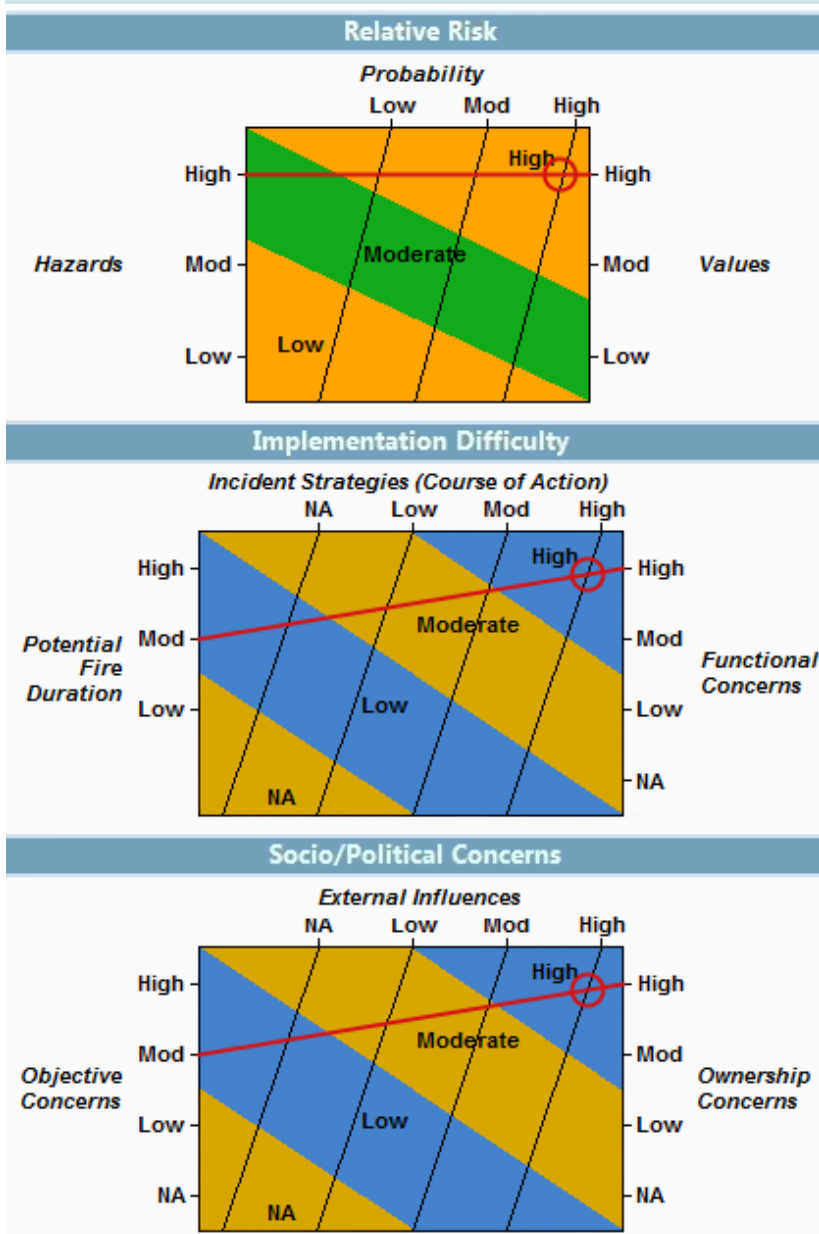
Range infrastructure and loss of forage could may have significant impacts on permittees.

Fire has impacted culturally significant tribal lands and there is a potential impact to high value tribal timber stands.

Organization Assessment Chart



Unit Recommended Org:Type 1



Planning Area Values Inventory Generated at 08/22/2020 22:46

NAME	VALUE
Planning Area Name	08/27/2020 12:03
Incident Name	Griffin
Planning Area Size	432,880 acres

Category	Value	Data Source	Currency	Coverage
AZTNF - Minerals / Hazard Cleanp Sites	2 acres	AZTNF		Unit
AZTNF - Minerals / High Risk Repository	4 acres	AZTNF		Unit
AZTNF - Plants / AZ Hedgehog	23 acres	AZTNF		Unit
AZTNF - Strategic Response / POD_105_Protect	184 acres	AZTNF		Unit
AZTNF - Strategic Response / POD_114_Protect	39 acres	AZTNF		Unit
AZTNF - Strategic Response / POD_120_Protect	14 acres	AZTNF		Unit
AZTNF - Strategic Response / POD_121_Restore	14,975 acres	AZTNF		Unit
AZTNF - Strategic Response / POD_122_Protect	6,525 acres	AZTNF		Unit
AZTNF - Strategic Response / POD_123_Protect	25,364 acres	AZTNF		Unit
AZTNF - Strategic Response / POD_124_Restore	4,397 acres	AZTNF		Unit

Category	Value	Data Source	Currency	Coverage
AZTNF - Strategic Response / POD_125_Restore	9,437 acres	AZTNF		Unit
AZTNF - Strategic Response / POD_128_Restore	351 acres	AZTNF		Unit
AZTNF - Strategic Response / POD_129_Restore	4,185 acres	AZTNF		Unit
AZTNF - Strategic Response / POD_75_Restore	5,336 acres	AZTNF		Unit
AZTNF - Strategic Response / POD_76_Restore	24,874 acres	AZTNF		Unit
AZTNF - Strategic Response / POD_85_Restore	17,282 acres	AZTNF		Unit
AZTNF - Strategic Response / POD_88_Restore	3,332 acres	AZTNF		Unit
AZTNF - Strategic Response / POD_91_Restore	27,339 acres	AZTNF		Unit
AZTNF - Strategic Response / POD_94_Restore	2,866 acres	AZTNF		Unit
AZTNF - Strategic Response / POD_95_Exclude	2,866 acres	AZTNF		Unit
AZTNF - Strategic Response / POD_96_Restore	32,557 acres	AZTNF		Unit
AZTNF - Strategic Response / POD_97_Restore	42,505 acres	AZTNF		Unit
AZTNF - Wildlife / Golden Eagle	31 acres	AZTNF		Unit
AZTNF - Wildlife / Owl Cores	96 acres	AZTNF		Unit
AZTNF - Wildlife / Owl PACs	625 acres	AZTNF		Unit
BLM Range Allotments	3,171 acres	BLM	03/11/2019	National
Building Clusters: Gila, AZ	327	Various	Various	Available counties
Building Clusters: Graham, AZ	0	Various	Various	Available counties
Campgrounds	2	BLM (FAMS) and USFS INFRA	6/01/2018	National (BLM and USFS only)
Communication Towers	38	HIFLD	02/20/2020	National
County: Gila, AZ	429,880 acres	USFWS ECOS	2/10/2020	National
County: Graham, AZ	3,001 acres	USFWS ECOS	2/10/2020	National
Est Ground Evac Time: 1-2 Hrs	154,984 acres	National Park Service NIFC	11/01/2012	CONUS
Est Ground Evac Time: 2-4 Hrs	119,635 acres	National Park Service NIFC	11/01/2012	CONUS
Est Ground Evac Time: 4-6 Hrs	11,125 acres	National Park Service NIFC	11/01/2012	CONUS
Est Ground Evac Time: 6+ Hrs	1,416 acres	National Park Service NIFC	11/01/2012	CONUS
Estimated Population	5,806	LandScan USA	2018	CONUS, AK, HI
IRA: Picacho Roadless Area	2,089 acres	USFS	03/08/2019	National
Landowner Category: BIA	274,501 acres	PAD-US 2.0, AICC, BIA/ WFDSS, Census	03/12/2020	National
Landowner Category: BLM	99 acres	PAD-US 2.0, AICC, BIA/ WFDSS, Census	03/12/2020	National
Landowner Category: Private	3,914 acres	PAD-US 2.0, AICC, BIA/ WFDSS, Census	03/12/2020	National
Landowner Category: State	2,652 acres	PAD-US 2.0, AICC, BIA/ WFDSS, Census	03/12/2020	National
Landowner Category: USFS	151,715 acres	PAD-US 2.0, AICC, BIA/ WFDSS, Census	03/12/2020	National
Oil and Gas Pipelines	8.2 miles	HSIP Gold 2015	04/2015	National
Roads	46.3 miles	NAVTEQ	11/2012	National
USFS Buildings	3	USFS	2020	National
Wilderness: Salt River Canyon Wilderness	6,242 acres	Wilderness.net	01/31/19	National

Coverage of Values Queried that Produced No Results

BLM Buildings (BLM Lands), BLM Horse and Burro (National), BLM Oil / Gas Leases (National), Class 1 Airsheds (National), Electric Power Plants (National), Electric Sub Stations (National), Electric Transmission Lines (National), Habitat (National), Mines (National), NPS Buildings (National), NRA (National), Natl Historic Trails (National), Natl Recreation Trails (National), Natl Scenic Byways (National), Natl Scenic Trails (National), Natl Wild Scenic Rivers (National), Other Areas (National), Ozone Non-Attainment (National), Particulates Non-Attainment (National), Protecting Unit (AK, CA, ID, MT, NM, MN), Sage Grouse Habitat (National), TNC Lands (National), USFWS Trails (National), WSA (National)

1.6. Benefits

1.7. Objectives

Incident FMU/Strategic Objective Code List

Unit	FMU/Strat Obj Code	Acres
AZA4S	Private	2,433
AZA4S	State	2,642
AZPHD	AZ_PHD_001 - PDO Desert South of I-10	100
AZSCA	APU - Asset Protection Unit	25,060
AZSCA	RMU - Resource Management Unit	249,466
AZTNF	2B - Globe RD Salt River Canyon Wilderness	6,249
AZTNF	2F - Globe RD General Management Area	146,935

Spatial Fire Planning Inventory

Category	Value	Data Source	Currency	Coverage
Aqua Retardant Avoidance	6,771 acres	National - FS Land Only	April 2020	National (USFS Units only)
Mgmt Req: APU-All	25,060 acres	AZSCA	Current	Unit Level
Mgmt Req: RMU-All	249,467 acres	AZSCA	Current	Unit Level
Mgmt Req: RMU-Com&Power MAA	975 acres	AZSCA	Current	Unit Level
Mgmt Req: RMU-Desert MAA	64,771 acres	AZSCA	Current	Unit Level
Mgmt Req: RMU-Forest MAA	26,053 acres	AZSCA	Current	Unit Level
Mgmt Req: RMU-Ranch&Historic MAA	3,013 acres	AZSCA	Current	Unit Level
Mgmt Req: RMU-Range&Woodland MAA	154,655 acres	AZSCA	Current	Unit Level
Mgmt Req: Recreation Sites	2 acres	AZTNF	Current	Unit Level
Mgmt Req: Sonoran Desert	3,015 acres	AZTNF	Current	Unit Level
Retardant Avoidance	127 acres	USDA FS Enterprise Data Warehouse	04/2020	National (USFS Units only)

Incident Objective List

Activated	Incident Objective
08/27/2020	Prevent fire from impacting San Carlos and Globe areas.
08/21/2020	<p>General Protect the identified values at risk of communities, critical infrastructure, private property, Tribal Property and air quality affecting communities by attempting to keep fire within the Planning Area.</p> <p>Values at Risk Protect Identified values at risk. These include but are not limited to Structures associated with Recreation sites, Historic structures near Seneca lake, the Griffin Ranch, Haystack Ranch, Range infrastructure, San Carlos ponderosa pine forest (especially commercial stands) and any identified cultural sites.</p>
08/21/2020	<p>Cultural Objective: Avoid or minimize any impacts to known cultural sites. Information on specific cultural resources is not available, but will be added to this objective when it becomes available.</p> <p>Tasks:</p> <p>Endstate: There is no significant disturbance to any cultural sites within the planning area from management actions.</p> <ol style="list-style-type: none"> 1. Whenever possible, consult with resource advisors prior to implementing ground-disturbing activities to identify cultural locations to be avoided 2. Assign a PARA or ARPA with all heavy equipment 3. Avoid any ground disturbing activities in archeological sites 4. If a site is damaged, report to the Resource Advisor

Incident Objective List

Activated	Incident Objective
08/21/2020	<p>Range There are currently eight Forest Service allotments within the planning area for the Salt, Gin, and Griffin Fires. There is currently 1 San Carlos Tribal allotment impacted by the fire area. Objective #1: Minimize adverse effects from fire and suppression activities to range improvement infrastructure Tasks: Objective #2: Prevent livestock loss of life Tasks:</p> <ol style="list-style-type: none"> 1. Work closely with District Range Specialists, San Carlos Agency READ and permittee to identify locations of above-ground structures 2. When possible/feasible, use tactics to protect above-ground structures (fence, pipeline, storage tanks, etc.) 1. Work with District Range Specialists, San Carlos Agency READ and permittee to identify cattle locations 2. Coordinate with fire personnel in the event that cattle need to be moved immediately 3. Stay in contact with fire personnel and permittees about the potential spread of fire and the trigger for moving cattle to other pastures
08/21/2020	<p>Recreation Minimize Suppression impacts to Seneca lake Recreation Area, Jones Water Campground, and Timber Camp Recreation Area where firefighter safety objectives can be met. Recreation Sites are to be considered VAR's and should be protected where firefighter safety objectives can be met.</p>
08/21/2020	<p>Forest Objective: Avoid or minimize negative impacts to ponderosa pine forest, especially commercial forest, on the San Carlos Apache Reservation. The general area of pine forest is shown as an objective shape in the decision document. Tasks: Endstate: San Carlos pine forest is not damaged by high-intensity fire</p> <ol style="list-style-type: none"> 1. If possible and necessary, prep roads and control lines 2. If time permits and conditions allow, burn out pine stands at low intensity. Consider evening ignitions.
08/21/2020	<p>COVID Use a risk-based approach to provide for firefighter and emergency responder safety on the Salt, Gin, and Griffin Fire while operating in a COVID-19 environment, being deliberate in committing resources only when there is a reasonable expectation of success in protecting life and critical property and infrastructure as we work towards containment of the fire. Assure that residual risk to first responders is acceptable as we meet the following incident objectives:</p> <ul style="list-style-type: none"> • Closely coordinate with state and county and San Carlos Tribal emergency response cooperators and health services to reduce and mitigate risks to public safety from operational and environmental hazards associated with the Salt, Gin, and Griffin wildfire and the potential for COVID-19 exposure and transmission to and from the local communities. • If firefighters or team members must enter the San Carlos Apache Reservation, San Carlos COVID protocols must be followed. • Provide mechanisms to actively monitor, address, and rapidly share lessons learned when varying COVID-19 implementation protocols interrupt effective and safe wildland fire suppression operations and/or cause conflicts among firefighters and crews. • Minimize to the extent feasible smoke exposure to firefighters, communities, and other affected areas to reduce susceptibility to and consequences from COVID-19 exposure. • Use a risk-based approach to provide for firefighter and emergency responder safety on the Griffin Fire while operating in a COVID-19 environment, being deliberate in committing resources only when there is a reasonable expectation of success in protecting life and critical property and infrastructure as we work towards containment of the fire. Assure that residual risk to first responders is acceptable as we meet the above incident objectives.

Incident Requirement List

Activated	Incident Requirement
08/21/2020	<ol style="list-style-type: none"> 1. Commit resources only when there is a reasonable expectation of success in protecting life and critical property and infrastructure, encourage innovation and the use of doctrine for local adaptations. 2. Implement strategies and tactics that commit responders only to operations where and when they will have a reasonable probability of success and under conditions where important values at risk are protected with the least exposure necessary while maintaining relationships with the people we serve. 3. In light of the ongoing COVID-19 pandemic incident personnel are expected to be familiar with and implement to the best of their ability the guidance described within the "Wildland Fire Response Plan COVID-19 Pandemic" as provided by the Southwest Geographic Area. This guidance which includes a variety of Best Management Practices (BMPs) represents a framework of considerations for use by the IMT, assigned

Incident Requirement List

Activated	Incident Requirement
	resources and other personnel committed to the incident.

Strategic Objective List

Unit	Shape/FMU	Activated	Strategic Objective
AZA4S	<Unit>	05/24/2016	AZSF will utilize appropriate management strategies and tactics on all wildland fires with emphasis on firefighter and public safety, considering minimizing suppression costs, benefits, and values to be protected.
AZPHD	AZ_PHD_001	04/29/2014	<ul style="list-style-type: none"> Management response to unplanned ignitions will be full suppression for all lands within the LSFO Planning Area (<i>Lower Sonoran ROD & ARMP, September 2012, pg. 2-45</i>). Limit the extent of wildfires and the impact of fire suppression efforts on wildlife, plant communities, and natural and cultural features (<i>Lower Sonoran ROD & ARMP, September 2012, pg. 2-46</i>). Reduce the frequency of human-caused wildland fires and minimize the total number of acres burned within the Planning Area (<i>Lower Sonoran ROD & ARMP, September 2012, pg. 2-46</i>). For all fire management activities, a focus will be to maintain or improve habitat for federally threatened, endangered, proposed, and candidate species (<i>Lower Sonoran ROD & ARMP, September 2012, pg. 2-47</i>). For all fire management activities, efforts will be made to reduce the impacts on natural and cultural resources (<i>Lower Sonoran ROD & ARMP, September 2012, pg. 2-51</i>).
AZSCA	APU	10/06/2015	<p>APU, Asset Protection Unit</p> <p>Strategic Objective: Protection of life and property, infrastructure, and high value resources without compromising firefighter or public safety. <u>Wildland fires are undesirable</u>. Emphasize fuel treatments that create and maintain fire-adapted communities, including prescribed burns and homeowner burn permits.</p> <p>Primary Operational Considerations:</p> <ul style="list-style-type: none"> Place highest priority on the allocation of available resources to fires threatening sites in the APU over fires in RMU. Full perimeter control will receive highest priority for suppression resources. Confinement may be utilized in rare occasions, based on site-specific circumstances with documented direction from line officer. Examples include confining fire to a designated area to treat fuels once structures are secure or if fire is burning away from structures towards RMU. Place highest priority on fuels treatments in the APU over RMU to create defensible space and increase landscape resiliency.
AZSCA	RMU	10/06/2015	<p>RMU, Resource Management Unit</p> <p>Strategic Objective: Protection of life and property, infrastructure, and high value resources without compromising firefighter or public safety. <u>Promote the use of fire as a desirable component of the ecosystem</u>. Coordinate fuels treatments with proposed strategies for unplanned ignitions to protect values at risk and promote landscape resiliency.</p> <p>Primary Operational Considerations:</p> <ul style="list-style-type: none"> Prioritize response to wildland fire in APU over all fires in RMUs. Emphasis will be perimeter control where needed, and confinement/point protection elsewhere. Use of Wildland Fire to protect, maintain, and enhance natural and cultural resources is encouraged. Use appropriate risk management/analysis tools to plan for and manage long-duration wildfires. Prioritize fuels treatments within the RMU to increase opportunities to use confinement and point protection as strategies near values at risk and promote landscape resiliency. Areas with high hazards will be identified for fuels projects to reduce or moderate fire behavior, especially at preplanned strategically located management action points.
AZTNF	<Unit>	08/17/2013	On all Class E or bigger fires, an Interdisciplinary (ID) team will determine the need for fire rehabilitation and resource protection, including the option for assigning a Burned Area Rehabilitation Team (BAER Team).
AZTNF	2B	08/17/2013	<p>All reported wildland fires will receive a strategic fire size-up. Wildland fires meeting locally developed operating guidelines listed below may be managed for resource benefit:</p> <ol style="list-style-type: none"> 1. Fire cause is from a natural ignition 2. Fire does not threaten life, property, public and firefighter safety. 3. Fire does not threaten fire sensitive cultural resources.

Strategic Objective List

Unit	Shape/FMU	Activated	Strategic Objective
			4. ADEQ, Air Quality Division procedures and guidelines for consultation and management of smoke will be implemented. 5. Wildland Fire managed for resource benefit must meet Tonto, Regional, and National fire situation parameters. 6. No site specific resource objective is threatened.
AZTNF	2B	08/17/2013	Resource benefit optional - management of fire for resource benefits can be considered
AZTNF	2B	08/17/2013	For each wildland fire located in an FMU approved for wildland fire use and naturally ignited, a decision criteria checklist will be prepared to determine whether or not it should be declared a Wildland Fire use candidate.
AZTNF	2B	08/17/2013	Suppression of fires, or portions thereof, will be undertaken where they adversely affect forest resources, endanger public safety and/or have a potential to damage private lands.
AZTNF	2B	08/17/2013	All suppression efforts will emphasize minimum impact strategies. Use of mechanized equipment for fireline construction is discouraged. Where use is necessary, rehabilitation will be implemented.
AZTNF	2F	08/19/2013	Resource benefit optional - management of fire for resource benefits can be considered
AZTNF	2F	08/17/2013	All reported wildland fires will receive a strategic fire size-up. Wildland fires meeting locally developed operating guidelines listed below may be managed for resource benefit: <ol style="list-style-type: none"> 1. Fire cause is from a natural ignition 2. Fire does not threaten life, property, public and firefighter safety. 3. Fire does not threaten fire sensitive cultural resources. 4. ADEQ, Air Quality Division procedures and guidelines for consultation and management of smoke will be implemented. 5. Wildland Fire managed for resource benefit must meet Tonto, Regional, and National fire situation parameters. 6. No site specific resource objective is threatened.
AZTNF	2F	08/17/2013	For each wildland fire located in an FMU approved for wildland fire use and naturally ignited, a decision criteria checklist will be prepared to determine whether or not it should be declared a Wildland Fire use candidate.
AZTNF	2F	08/17/2013	Suppression of fires, or portions thereof, will be undertaken where they adversely affect forest resources, endanger public safety and/or have a potential to damage private lands.

Management Requirement List

Unit	Shape/FMU	Activated	Management Requirement
	Aqua Retardant Avoidance	06/18/2013	The aerial application of fire retardant is allowed for fighting fires. Aerially delivered fire retardant should not be applied to any mapped aquatic avoidance area, waterway or buffer. The only exception to using aerially applied fire retardant in avoidance areas is for the protection of human life or public safety . The Incident Commander is the decision maker. Information concerning the Record of Decision for the Aerial Application of Fire Retardant is available at https://www.fs.fed.us/fire/retardant/index.html
	Retardant Avoidance	05/31/2012	The aerial application of fire retardant is allowed for fighting fires. Aerially delivered fire retardant should not be applied to any mapped terrestrial avoidance area, waterway or buffer. The only exception to using aerially applied fire retardant in avoidance areas is for the protection of human life or public safety . The Incident Commander is the decision maker. Information concerning the Record of Decision for the Aerial Application of Fire Retardant is available at https://www.fs.fed.us/fire/retardant/index.html
AZPHD	<Unit>	04/29/2014	Smoke Management <ul style="list-style-type: none"> • During the course of management of a wildland fire, fire managers will document potential smoke impacts on public health and safety as well as sensitive receptor sites. • Fire managers will coordinate appropriate and timely smoke monitoring and reporting with Arizona Department of Environmental Quality (ADEQ). Smoke monitoring may include: meteorological conditions; plume observations and documentation; smoke dispersal; and/or particulate monitoring. • Appropriate and applicable wildland fire management opportunities to reduce smoke impacts will be considered and documented (i.e. under "Courses of Action" in WFSS).

Unit	Shape/FMU	Activated	Management Requirement
AZPHD	AZ_PHD_001	04/29/2014	<ul style="list-style-type: none"> Public information should be provided regarding potential smoke impacts on public health and safety as well as potential smoke impacts on sensitive receptors. Ensure firefighter and public safety is the highest priority in every fire or fuels management activity. Set priorities among protecting residences, community infrastructure, and other man-made property and improvements (<i>Lower Sonoran ROD & ARMP, September 2012, pg.2-45</i>). Resource advisors from the BLM will be designated to coordinate natural resource concerns, including federally protected species. They will also serve as a field contact representative responsible for coordination with the USFWS. Duties will include identifying protective measures endorsed by the field office manager, and delivering these measures to the incident commander; surveying prospective campsites, aircraft landing, and fueling sites; and performing other duties necessary to ensure adverse effects on federally protected species and their habitats are minimized. On-the-ground monitors will be designated and used when fire suppression activities occur within identified occupied or suitable habitat for federally protected species (<i>Lower Sonoran ROD & ARMP, September 2012, pg. 2-51</i>). All personnel on the fire (firefighters and support personnel) will be briefed and educated by resource advisors or designated supervisors about listed species and the importance of minimizing impacts on individuals and their habitats. All personnel will be informed of the conservation measures designed to minimize or eliminate take of the species present. This information is best identified in the incident objectives (<i>Lower Sonoran ROD & ARMP, September 2012, pg. 2-51</i>). Implement general and species-specific conservation measures to the extent possible to minimize harm to federally listed, proposed, or candidate species within the action area (<i>Lower Sonoran ROD & ARMP, September 2012, pg. A-24</i>). Fire suppression and rehabilitation in riparian corridors will be coordinated with the resource advisor or qualified biologist approved by the BLM (<i>Lower Sonoran ROD & ARMP, September 2012, pg. 2-52</i>). Conduct all fire management activities within ACECs and along the Anza NHT in a manner that will avoid or minimize degradation of these areas and values that have been identified in the respective legislative designations for these areas (<i>Lower Sonoran ROD & ARMP, September 2012, pg. 2-51</i>). Ensure fire management activities in wilderness areas are compatible with the applicable wilderness plan (<i>Lower Sonoran ROD & ARMP, September 2012, pg. 2-51</i>). Develop effective interagency and community interactions and cooperation to meet wildland-fire and fuel-management strategies and landscape-scale resource condition objectives across administrative boundaries (<i>Lower Sonoran ROD & ARMP, September 2012, pg. 2-54</i>). Fire suppression will be carried out in a manner consistent with Interagency Standards for Fire and Fire Aviation Operations (<i>Lower Sonoran ROD & ARMP, September 2012, pg. A-23</i>).
AZPHD	AZ_PHD_001	04/29/2014	<ul style="list-style-type: none"> Protect all known cultural resources from disturbance. Fire management activities will continue to avoid disturbing known archaeological sites or sites found during such activities. Fires will not be intentionally started at known sites. Archaeologists will serve as resource advisors for fire management and help develop and implement fire and fuels management plans, which would address effects on cultural resources. Fire crews will be educated about the need to protect cultural resources (<i>Lower Sonoran ROD & ARMP, September 2012, pg. A-23</i>). Use suppression tactics that limit damage or disturbance to the habitat and landscape. Use no heavy equipment (such as dozers) unless approved (<i>Lower Sonoran ROD & ARMP, September 2012, pg. A-23</i>). Use MIST, comply with the management plan to the maximum extent possible, and coordinate with resource advisors (<i>Lower Sonoran ROD & ARMP, September 2012, pg. A-24</i>). Use of all fire chemicals will be accomplished in accordance with guidelines in the Interagency Policy for Aerial and Ground Delivery of Wildland Fire Chemicals near Waterways and Other Avoidance Areas (<i>Interagency Standards for Fire and Fire Aviation Operations, 2014 and as updated</i>). The Federal Land Manager or State Land Manager (F/SLM) in whose jurisdiction a wildfire occurs shall make available to ADEQ no later than the day after the activity all required information for wildfire incidents that burned more than 100 acres per day in timber or slash fuels or 300 acres per day in brush or grass fuels. For each day of a wildfire incident that exceeds the daily activity threshold, the F/SLM shall provide the location, an estimate of predominant fuel type and quantity consumed, and an estimate of the area blackened that day (<i>Arizona Administrative Code. Title 18</i>).

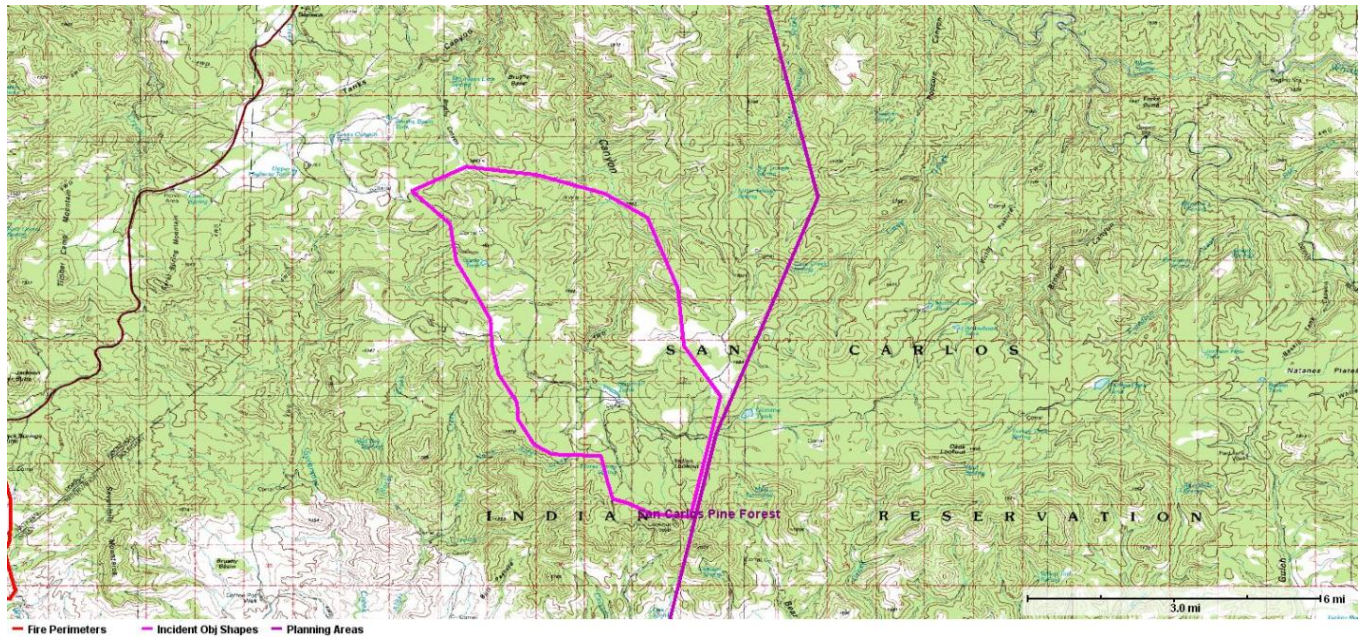
Unit	Shape/FMU	Activated	Management Requirement
			<i>Environmental Quality, Chapter 2. Department of Environmental Quality-Air Pollution Control, Article 15. Forest and Range Management Burns 2004).</i>
AZSCA	APU-All	10/06/2015	<ul style="list-style-type: none"> Public and firefighter safety is always the top priority. Apply risk management principles in every decision and action. Keep the tribal council and public informed on wildfires and prescribed fires. Use local staff and crews to manage wildfires, and local vendors to support wildfires. Protect cultural sites, dance grounds, and holy grounds from damage. Protect Threatened and Endangered Species to the greatest extent possible. Protect or minimize threats and loss to private property, tribal assets, and community infrastructure. Coordinate security, evacuations, traffic control, road closures, and medical emergencies in the Wildland Urban Interface with the San Carlos Fire Department/EMS and San Carlos Police Department. Restrict retardant drops on homes unless absolutely necessary. Restrict dozer use near homes and infrastructure unless absolutely necessary. Strategically plan fuels treatments to increase fire protection near homes and infrastructure. Promote fire prevention and education to reduce human caused ignitions. Investigate human-caused fires, and assist with the prosecution of arsonist.
AZSCA	RMU-All	10/06/2015	<ul style="list-style-type: none"> Public and firefighter safety is always the top priority. Apply risk management principles in every decision and action. Keep the tribal council and public informed on wildfires and prescribed fires. Use local staff and crews to manage wildfires, and local vendors to support wildfires. Protect cultural sites, dance grounds, and holy grounds from damage. Protect Threatened and Endangered Species to the greatest extent possible. Use roads and natural features as fire control lines, when and where possible, to reduce firefighter exposure and minimize resource damage. Use Minimum Impact Suppression Tactics (MIST) near cultural sites and tradition use areas. Weed-wash incoming vehicles and heavy equipment before use. Coordinate road and forest closures and security with Tribal Game Rangers. Coordinate road work with Tribal Roads, BIA Roads, and Land Operations. Coordinate medical emergencies and ground transportation with San Carlos Fire/EMS. Utilize para-archeologists to clear dozer lines, and report all previously unknown sites to the Tribal Archeologists. Obtain clearance from the Natural Resources Officer (or designee) before using dip sites or draft sites. Restrict dozers and fire retardant from areas within 300 feet of any stream or water body, known cultural sites, and visitor use areas. Minimize negative impacts to native fish and other aquatic species with any upstream water depletions or sedimentation. Manage air quality issues in WUI areas, near high visitor use areas, and along main travel routes. Minimize impacts to any adjacent or potentially impacted designated Class I Airsheds. Coordinate smoke management with BIA-WRO and AZEQ. Coordinate with adjacent agencies for fires within 1 mile of the Reservation boundary. Minimize damage to livestock, fencing, corrals, and related ranch infrastructure. Consult with the Natural Resources Officer (or designee) before moving livestock to another pasture or range unit, unless the livestock are in eminent danger. Use wildland and prescribed fire when and where appropriate to meet fuel treatment and forest restoration goals.
AZSCA	RMU-Com&Power MAA	10/06/2015	<ul style="list-style-type: none"> BIA fire management and law enforcement, Tribal Public Safety, and others rely on equipment at these sites for daily operations. For public and firefighter safety, suppression strategies are a priority during wildfires. The vegetation around these sites should be cleared and maintained to withstand a wildfire. Powerlines present a hazard to ground and air operations (see Air Hazard Map and IRPG). During wildfire events, communication and power companies must be notified as soon as a threat is identified. Some sites are operated by private companies and produce income for the Tribe.
AZSCA	RMU-Desert MAA	10/06/2015	<ul style="list-style-type: none"> Suppress wildfires in areas with fire-sensitive desert flora and fauna. Consult with the Tribal Ethnobotanist on impacts to plant collection areas.
AZSCA	RMU-Forest MAA	10/06/2015	<ul style="list-style-type: none"> Forested areas contain commercial timber, livestock, and wildlife that provides jobs and revenue to the Tribe. These areas may have activity fuels from timber sales and forest thinning projects; standing and downed fuels from insect and disease outbreaks, drought, and other natural disturbances.

Management Requirement List

Unit	Shape/FMU	Activated	Management Requirement
AZSCA	RMU-Ranch&Historic MAA	10/06/2015	<ul style="list-style-type: none"> Consult with the Forest Manager for current forest conditions, and the status of logging operations and other forestry project work. Consult with Resource Advisors (READs), Field Observers (FOBS), and Fire Effects Monitors (FEMOs) assigned to the incident to minimize damage to natural and cultural resources. Manage wildfires for resource benefits, when and where possible. Benefits include forest and herbaceous regeneration, reduced competition from fire-intolerant species, improved wildlife habitat, and increased forage production. Use prescribed and wildland fires to approach the historical fire return interval and severity for Ponderosa Pine forests. Monitor burning conditions (weather, fuels, fire behavior) and compare it to pre- and post-fire monitoring data to evaluate the effectiveness of fire in meeting forest restoration goals. Adjust fire prescriptions based on monitoring data. Prioritize beneficial wildfires and fuels treatments in this area over other areas in the RMU to accelerate forest restoration.
AZSCA	RMU-Range&Woodland MAA	10/06/2015	<ul style="list-style-type: none"> These sites include year-around and seasonally occupied ranches, and, historic structures outside the Asset Protection Unit FMU. These sites are the first priority for suppression actions (see map for ½ mile buffer). Prioritize Initial Response to wildfires and fuels treatments in these areas over all other areas in the RMU. Coordinate structural suppression with outside agencies and local fire departments, if necessary (Type 4 Engines or structural protection engines). Propane, gas, and other hazardous materials may be present. Livestock may be present in corrals near ranch houses.
AZTNF	<Unit>	08/17/2013	Management activities will be planned so that air quality will equal to or better than that required by applicable Federal, State, and local standards or regulations.
AZTNF	<Unit>	09/05/2013	Wildland Fires threatening the Wildland/Urban Interface will have high suppression priority
AZTNF	Recreation Sites	09/05/2013	Prevent Wildland Fire from destroying developed recreation improvements, including a five-chain wide buffer surrounding them.
AZTNF	Sonoran Desert	09/05/2013	Wildland Fire occurring within the Sonoran Desert and riparian communities will receive an appropriate management response. Suppression strategy is to minimize damage within this ecosystem.

[San Carlos Forest](#)

General area of ponderosa pine forest on the San Carlos Reservation

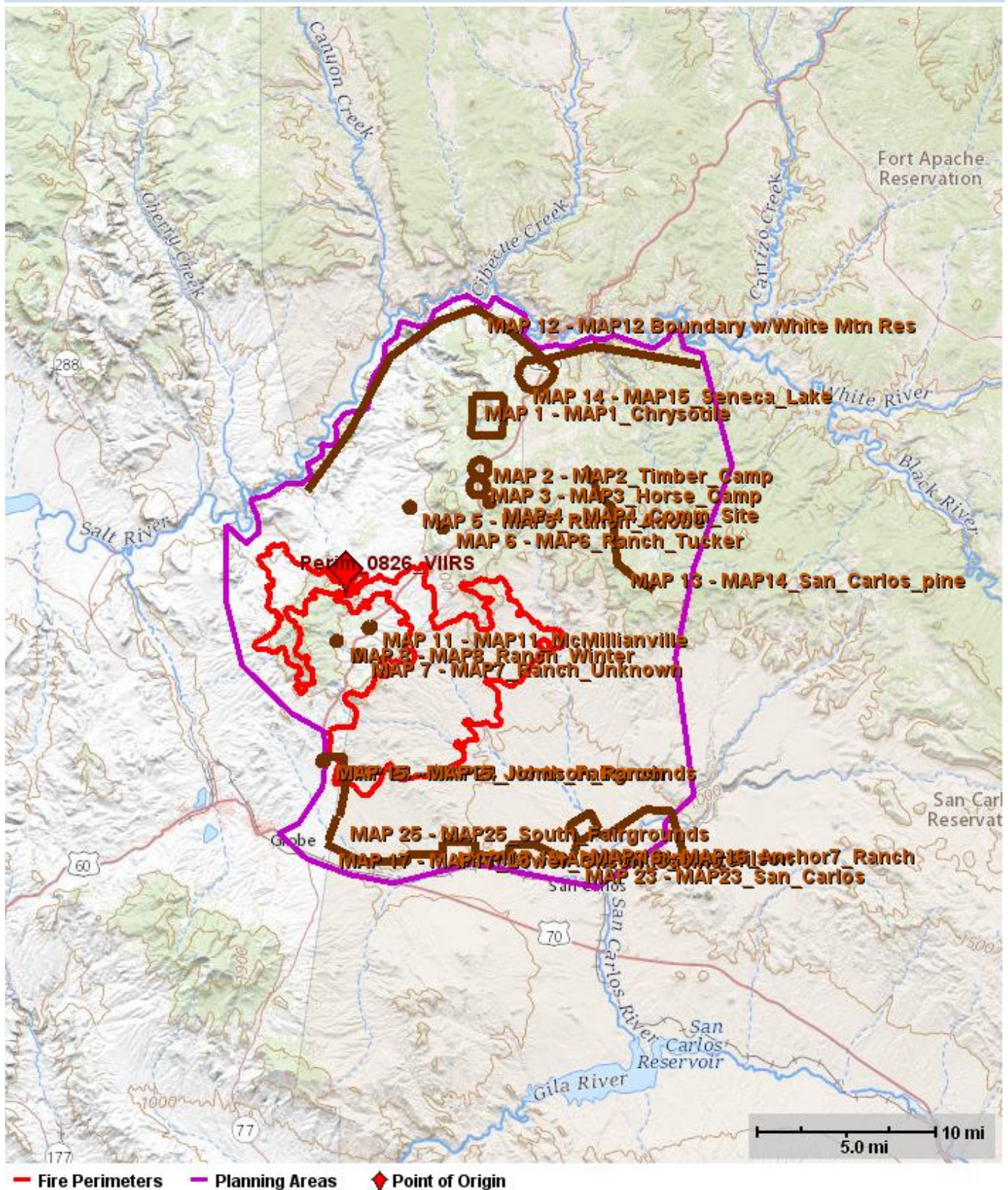


1.8. Course of Action

Course of Action

Active	Inactive	Action Item
08/20/2020		A lack of resources means strategies and tactics options may be limited. Direct and indirect strategies and tactics will be used as opportunities arise.

M.A.P.s Image



Management Action Point 1

NAME	VALUE
Incident Name	Griffin
Cost	
Shape	MAP1_Chrysotile
Activated	08/21/2020
Deactivated	
Status	Active

Condition

Fire is approaching within approximately one mile of residences or private property, and is not likely to be suppressed.

Actions

Description: Line approximately one mile around private property and residences. This is a mining area that has multiple residences, open mines, and mining infrastructure.

Purpose: To allow Fire Operations time to consider alternative methods of fire control as the fire approaches the private property. To minimize fire damage to the Sonoran Desert.

To provide adequate notification time for identified area residents to orderly evacuate the identified area as needed.

Actions: Fire Operations will evaluate alternate strategies to minimize the impact of the fire to residences or private property, also smoke impact to the residential areas and area roadways. These strategies may include retardant use, mechanical fireline, hand crews, or point protection.

If need be for public safety, Fire Operations will consider coordinating with the Gila County Sheriff's Office and Office of Emergency Management to contact the identified area that they are being placed under a "Set" or "Go" notification. And what this means. If a notification is issued also establish contact with the Agency Administrator, Fire Information, and Fire Liaison, these will be responsible for coordinating and notifying their respective chains of command.

If fire is going to impact the area contact APS for electrical Shutdown.

If smoke will impact Hwy. 60 advise ADOT for signage on the major roadways

This MAP activation will be conducted by Fire Operations along with concurrence from the Fire Incident Commander and the Agency Administrator.

Resources

Gila County Sherriff's Office

Gila County Office of Emergency Management

Fire Information

APS

ADOT

Management Action Point 2

NAME	VALUE
Incident Name	Griffin
Cost	
Shape	MAP2_Timber_Camp
Activated	08/21/2020
Deactivated	
Status	Active

Condition

Fire is approaching within approximately one mile of the infrastructure at the recreation area, and is not likely to be suppressed.

Actions

Description: Line approximately one mile around the Timber Camp Recreation Site. This is a heavily used area just off of Hwy 60.

Purpose: To allow Fire Operations time to consider alternative methods of fire control as the fire approaches the recreation site.

To minimize fire damage to the Sonoran Desert.

To provide adequate notification time for area recreation site users to orderly evacuate the identified area as needed.

Actions: Fire Operations will evaluate alternate strategies to minimize the impact of the fire to infrastructure, also smoke impact to the residential areas and area roadways. These strategies may include retardant use, mechanical fireline, hand crews, or point protection.

If need be for public safety, Fire Operations will consider coordinating with the Gila County Sheriff's Office and Office of Emergency Management to contact the identified area that they are being placed under a "Set" or "Go" notification. And what this means. If a notification is issued also establish contact with the Agency Administrator, Fire Information, and Fire Liaison, these will be responsible for coordinating and notifying their respective chains of command.

If fire is going to impact the area contact APS for electrical Shutdown.

If smoke will impact Hwy. 60 advise ADOT for signage on the major roadways

This MAP activation will be conducted by Fire Operations along with concurrence from the Fire Incident Commander and the Agency Administrator.

Resources

Gila County Sherriff's Office

Gila County Office of Emergency Management

Fire Information

APS

ADOT

Management Action Point 3

NAME	VALUE
Incident Name	Griffin
Cost	
Shape	MAP3_Horse_Camp
Activated	08/21/2020
Deactivated	
Status	Active

Condition

Fire is approaching within approximately one mile of the infrastructure at the recreation area, and is not likely to be suppressed.

Actions

Description: Line approximately one mile around the Horse Camp Recreation Site. This is a heavily used area just off of Hwy 60.

Purpose: To allow Fire Operations time to consider alternative methods of fire control as the fire approaches the recreation site.

To minimize fire damage to the Sonoran Desert.

To provide adequate notification time for area recreation site users to orderly evacuate the identified area as needed.

Actions: Fire Operations will evaluate alternate strategies to minimize the impact of the fire to infrastructure, also smoke impact to the residential areas and area roadways. These strategies may include retardant use, mechanical fireline, hand crews, or point protection.

If need be for public safety, Fire Operations will consider coordinating with the Gila County Sheriff's Office and Office of Emergency Management to contact the identified area that they are being placed under a "Set" or "Go" notification. And what this means. If a notification is issued also establish contact with the Agency Administrator, Fire Information, and Fire Liaison, these will be responsible for coordinating and notifying their respective chains of command.

If fire is going to impact the area contact APS for electrical Shutdown.

If smoke will impact Hwy. 60 advise ADOT for signage on the major roadways

This MAP activation will be conducted by Fire Operations along with concurrence from the Fire Incident Commander and the Agency Administrator.

Resources

Gila County Sherriff's Office

Gila County Office of Emergency Management

Fire Information

APS

ADOT

Management Action Point 4

NAME	VALUE
Incident Name	Griffin
Cost	
Shape	MAP4_Comm_Site
Activated	08/21/2020
Deactivated	
Status	Active

Condition

Fire is approaching within approximately one mile of the infrastructure at the communications site, and is not likely to be suppressed.

Actions

Description: Line approximately one mile around the communications Site. This is a heavily used area just off of Hwy 60.

Purpose: To allow Fire Operations time to consider alternative methods of fire control as the fire approaches the communications site. To minimize fire damage to the Sonoran Desert.

To provide adequate notification time for maintenance personnel to orderly evacuate the identified area as needed.

Actions: Fire Operations will evaluate alternate strategies to minimize the impact of the fire to infrastructure, also smoke impact to the residential areas and area roadways. These strategies may include retardant use, mechanical fireline, hand crews, or point protection. If need be for public safety, Fire Operations will consider coordinating with the Gila County Sheriff's Office and Office of Emergency Management to contact the identified area that they are being placed under a "Set" or "Go" notification. And what this means. If a notification is issued also establish contact with the Agency Administrator, Fire Information, and Fire Liaison, these will be responsible for coordinating and notifying their respective chains of command.

If fire is going to impact the area contact APS for electrical Shutdown.

If smoke will impact Hwy. 60 advise ADOT for signage on the major roadways

This MAP activation will be conducted by Fire Operations along with concurrence from the Fire Incident Commander and the Agency Administrator.

Resources

Gila County Sherriff's Office

Gila County Office of Emergency Management

Fire Information

APS

ADOT

Management Action Point 5

NAME	VALUE
Incident Name	Griffin
Cost	
Shape	MAP5_Ranch_Adobe
Activated	08/21/2020
Deactivated	
Status	Active

Condition

Fire is approaching within approximately one mile of residences or private property, and is not likely to be suppressed.

Actions

Description: Line approximately one mile around private property and residences. There are a number of isolated ranches in the area with unknown names.

Purpose: To allow Fire Operations time to consider alternative methods of fire control as the fire approaches the ranching property.

To allow time for the ranchers to evacuate livestock from the area.

To minimize fire damage to the Sonoran Desert.

To provide adequate notification time for identified area residents to orderly evacuate the identified area as needed.

Actions: Fire Operations will evaluate alternate strategies to minimize the impact of the fire to residences or private property, also smoke impact to the residential areas and area roadways. These strategies may include retardant use, mechanical fireline, hand crews, or point protection.

If need be for public safety, Fire Operations will consider coordinating with the Gila County Sheriff's Office and Office of Emergency Management to contact the identified area that they are being placed under a "Set" or "Go" notification. And what this means. If a notification is issued also establish contact with the Agency Administrator, Fire Information, and Fire Liaison, these will be responsible for coordinating and notifying their respective chains of command.

If fire is going to impact the area contact APS for electrical Shutdown.

If smoke will impact Hwy. 60 advise ADOT for signage on the major roadways

This MAP activation will be conducted by Fire Operations along with concurrence from the Fire Incident Commander and the Agency Administrator.

Resources

Gila County Sherriff's Office

Gila County Office of Emergency Management

Fire Information

APS

ADOT

Management Action Point 6

NAME	VALUE
Incident Name	Griffin
Cost	
Shape	MAP6_Ranch_Tucker
Activated	08/21/2020
Deactivated	
Status	Active

Condition

Fire is approaching within approximately one mile of residences or private property, and is not likely to be suppressed.

Actions

Description: Line approximately one mile around private property and residences. There are a number of isolated ranches in the area with unknown names.

Purpose: To allow Fire Operations time to consider alternative methods of fire control as the fire approaches the ranching property.

To allow time for the ranchers to evacuate livestock from the area.

To minimize fire damage to the Sonoran Desert.

To provide adequate notification time for identified area residents to orderly evacuate the identified area as needed.

Actions: Fire Operations will evaluate alternate strategies to minimize the impact of the fire to residences or private property, also smoke impact to the residential areas and area roadways. These strategies may include retardant use, mechanical fireline, hand crews, or point protection.

If need be for public safety, Fire Operations will consider coordinating with the Gila County Sheriff's Office and Office of Emergency Management to contact the identified area that they are being placed under a "Set" or "Go" notification. And what this means. If a notification is issued also establish contact with the Agency Administrator, Fire Information, and Fire Liaison, these will be responsible for coordinating and notifying their respective chains of command.

If fire is going to impact the area contact APS for electrical Shutdown.

If smoke will impact Hwy. 60 advise ADOT for signage on the major roadways

This MAP activation will be conducted by Fire Operations along with concurrence from the Fire Incident Commander and the Agency Administrator.

Resources

Gila County Sherriff's Office

Gila County Office of Emergency Management

Fire Information

APS

ADOT

Management Action Point 7

NAME	VALUE
Incident Name	Griffin
Cost	
Shape	MAP7_Ranch_Unknown
Activated	08/21/2020
Deactivated	
Status	Active

Condition

Fire is approaching within approximately one mile of an Unknown Ranch on the 2312rd, and is not likely to be suppressed.

Actions

Description: Line approximately one mile around an Unknown Ranch on the 2312rd.

Purpose: To allow Fire Operations time to consider alternative methods of fire control as the fire approaches the ranching property.

To allow time for the ranchers to evacuate livestock from the area.

To minimize fire damage to the Sonoran Desert.

To provide adequate notification time for identified area residents to orderly evacuate the identified area as needed.

Actions: Fire Operations will evaluate alternate strategies to minimize the impact of the fire to residences or private property, also smoke impact to the residential areas and area roadways. These strategies may include retardant use, mechanical fireline, hand crews, or point protection.

If need be for public safety, Fire Operations will consider coordinating with the Gila County Sheriff's Office and Office of Emergency Management to contact the identified area that they are being placed under a "Set" or "Go" notification. And what this means. If a notification is issued also establish contact with the Agency Administrator, Fire Information, and Fire Liaison, these will be responsible for coordinating and notifying their respective chains of command.

If fire is going to impact the area contact APS for electrical Shutdown.

If smoke will impact Hwy. 60 advise ADOT for signage on the major roadways

This MAP activation will be conducted by Fire Operations along with concurrence from the Fire Incident Commander and the Agency Administrator.

Resources

Gila County Sherriff's Office

Gila County Office of Emergency Management

Fire Information

APS

ADOT

Management Action Point 8

NAME	VALUE
Incident Name	Griffin
Cost	
Shape	MAP8_Ranch_Winter
Activated	08/21/2020
Deactivated	
Status	Active

Condition

Fire is approaching within approximately one mile of residences or private property, and is not likely to be suppressed.

Actions

Description: Line approximately one mile around private property and residences. There are a number of isolated ranches in the area with unknown names.

Purpose: To allow Fire Operations time to consider alternative methods of fire control as the fire approaches the ranching property.

To allow time for the ranchers to evacuate livestock from the area.

To minimize fire damage to the Sonoran Desert.

To provide adequate notification time for identified area residents to orderly evacuate the identified area as needed.

Actions: Fire Operations will evaluate alternate strategies to minimize the impact of the fire to residences or private property, also smoke impact to the residential areas and area roadways. These strategies may include retardant use, mechanical fireline, hand crews, or point protection.

If need be for public safety, Fire Operations will consider coordinating with the Gila County Sheriff's Office and Office of Emergency Management to contact the identified area that they are being placed under a "Set" or "Go" notification. And what this means. If a notification is issued also establish contact with the Agency Administrator, Fire Information, and Fire Liaison, these will be responsible for coordinating and notifying their respective chains of command.

If fire is going to impact the area contact APS for electrical Shutdown.

If smoke will impact Hwy. 60 advise ADOT for signage on the major roadways

This MAP activation will be conducted by Fire Operations along with concurrence from the Fire Incident Commander and the Agency Administrator.

Resources

Gila County Sherriff's Office

Gila County Office of Emergency Management

Fire Information

APS

ADOT

Management Action Point 11

NAME	VALUE
Incident Name	Griffin
Cost	
Shape	MAP11_McMillianville
Activated	08/21/2020
Deactivated	
Status	Active

Condition

Fire is approaching within approximately one mile of residences or private property, and is not likely to be suppressed.

Actions

Description: Line approximately one mile around private property and residences. This is a historical site with multiple structures.

Purpose: To allow Fire Operations time to consider alternative methods of fire control as the fire approaches the ranching property.

To allow time for the rancher to evacuate livestock from the area.

To minimize fire damage to the Sonoran Desert.

To provide adequate notification time for identified area residents to orderly evacuate the identified area as needed.

Actions: Fire Operations will evaluate alternate strategies to minimize the impact of the fire to residences or private property, also smoke impact to the residential areas and area roadways. These strategies may include retardant use, mechanical fireline, hand crews, or point protection.

If need be for public safety, Fire Operations will consider coordinating with the Gila County Sheriff's Office and Office of Emergency Management to contact the identified area that they are being placed under a "Set" or "Go" notification. And what this means. If a notification is issued also establish contact with the Agency Administrator, Fire Information, and Fire Liaison, these will be responsible for coordinating and notifying their respective chains of command.

If fire is going to impact the area contact APS for electrical Shutdown.

If smoke will impact Hwy. 60 advise ADOT for signage on the major roadways

This MAP activation will be conducted by Fire Operations along with concurrence from the Fire Incident Commander and the Agency Administrator.

Resources

Gila County Sherriff's Office

Gila County Office of Emergency Management

Fire Information

APS

ADOT

Management Action Point 12

NAME	VALUE
Incident Name	Griffin
Cost	
Shape	MAP12 Boundary w/White Mtn Res
Activated	08/21/2020
Deactivated	
Status	Active

Condition

Fire threatens to cross Salt River and cross onto White Mountain Apache Reservation

Actions

Description: Line along the edge of Salt River Canyon south of the White Mountain Reservation

Purpose: To allow agency administrators time to open communications with Fort Apache Agency and begin planning for the possibility of the fire crossing the river onto the White Mountain Reservation

To allow adequate time for planning

Actions: Agency administrators will contact Fort Apache Agency Administrator

This MAP activation will be conducted by Fire Operations along with concurrence from the Fire Incident Commander and the Agency Administrator.

Resources

San Carlos, Fort Apache and Tonto National Forest administrators

Management Action Point 13

NAME	VALUE
Incident Name	Griffin
Cost	\$30,000
Shape	MAP14_San_Carlos_pine
Activated	08/21/2020
Deactivated	
Status	Active

Condition

Fire threatens to burn into San Carlos ponderosa pine forest

Actions

Description: Line along rim above which ponderosa pine forest occurs on San Carlos Reservation.

Purpose: To allow Fire Operations time to consider alternative methods of fire control as the fire approaches the forest. The San Carlos Agency would prefer burnout with low intensity fire before wildfire arrives.

To limit damage to commercial and non-commercial ponderosa pine forest on the San Carlos Reservation

To provide adequate time for fire resources to prep, plan and burn-out.

Actions: Fire Operations will evaluate alternate strategies to minimize the impact of the fire to pine forest. These strategies may include retardant use to delay fire, mechanical fireline or hand crews.

This MAP activation will be conducted by Fire Operations along with concurrence from the Fire Incident Commander and the Agency Administrator.

Resources

Two crews and four type 6 engines

Management Action Point 14

NAME	VALUE
Incident Name	Griffin
Cost	
Shape	MAP15_Seneca_Lake
Activated	08/21/2020
Deactivated	
Status	Active

Condition

Fire approaches within approximately 1 mile of Seneca Lake

Actions

Description: Line approximately one mile around the Seneca Lake recreation site and historic structures. Seneca is a heavily used area just off of Hwy 60.

Purpose: To allow Fire Operations time to consider alternative methods of fire control as the fire approaches the recreation site. To minimize fire damage structures

To provide adequate notification time for area recreation site users to orderly evacuate the identified area as needed.

Actions: Fire Operations will evaluate alternate strategies to minimize the impact of the fire to infrastructure, also smoke impact to the residential areas and area roadways. These strategies may include retardant use, mechanical fireline, hand crews, or point protection. If need be for public safety, Fire Operations will consider coordinating with the San Carlos Game and Fish Department and San Carlos Emergency Response Commission to contact the identified area that they are being placed under a "Set" or "Go" notification. And what this means. If a notification is issued also establish contact with the Agency Administrator, Fire Information, and Fire Liaison, these will be responsible for coordinating and notifying their respective chains of command.

If smoke will impact Hwy. 60 advise ADOT for signage on the major roadways

This MAP activation will be conducted by Fire Operations along with concurrence from the Fire Incident Commander and the Agency Administrator.

Resources

San Carlos Game Rangers

Fire Information

ADOT

Management Action Point 15

NAME	VALUE
Incident Name	Griffin
Cost	
Shape	MAP15_Johnson_Ranch
Activated	08/27/2020
Deactivated	
Status	Active

Condition

Fire is approaching within approximately one mile of residences or private property, and is not likely to be suppressed.

Actions

Description: Line approximately one mile around private property and residences. These is an older family that may need help evacuating and may take more time.

Purpose: To allow Fire Operations time to consider alternative methods of fire control as the fire approaches the ranching property. To allow time for the rancher to evacuate livestock from the area.

To minimize fire damage to the Sonoran Desert.

To provide adequate notification time for identified area residents to orderly evacuate the identified area as needed.

Actions: Fire Operations will evaluate alternate strategies to minimize the impact of the fire to residences or private property, also smoke impact to the residential areas and area roadways. These strategies may include retardant use, mechanical fireline, hand crews, or point protection.

If need be for public safety, Fire Operations will consider coordinating with the Gila County Sheriff's Office and Office of Emergency Management to contact the identified area that they are being placed under a "Set" or "Go" notification. And what this means. If a notification is issued also establish contact with the Agency Administrator, Fire Information, and Fire Liaison, these will be responsible for coordinating and notifying their respective chains of command.

If fire is going to impact the area contact APS for electrical Shutdown.

If smoke will impact Hwy. 60 advise ADOT for signage on the major roadways

This MAP activation will be conducted by Fire Operations along with concurrence from the Fire Incident Commander and the Agency Administrator.

Resources

Gila County Sherriff's Office

Gila County Office of Emergency Management

Fire Information

APS

ADOT

Management Action Point 16

NAME	VALUE
Incident Name	Griffin
Cost	
Shape	MAP16_Anchor7_Ranch
Activated	08/27/2020
Deactivated	
Status	Active

Condition

Fire is approaching within approximately one mile of residences or private property, and is not likely to be suppressed.

Actions

Description: Line approximately one mile around private property and residences. This ranch has had treatment done and recent fires around it. May be able to shelter in place.

Purpose: To allow Fire Operations time to consider alternative methods of fire control as the fire approaches the ranching property.

To allow time for the rancher to evacuate livestock from the area.

To minimize fire damage to the Sonoran Desert.

To provide adequate notification time for identified area residents to orderly evacuate the identified area as needed.

Actions: Fire Operations will evaluate alternate strategies to minimize the impact of the fire to residences or private property, also smoke impact to the residential areas and area roadways. These strategies may include retardant use, mechanical fireline, hand crews, or point protection.

If need be for public safety, Fire Operations will consider coordinating with the San Carlos Emergency Services, Gila County Sheriff's Office and Office of Emergency Management to contact the identified area that they are being placed under a "Set" or "Go" notification. And what this means. If a notification is issued also establish contact with the Agency Administrator, Fire Information, and Fire Liaison, these will be responsible for coordinating and notifying their respective chains of command.

If fire is going to impact the area contact APS for electrical Shutdown.

If smoke will impact Hwy. 60 advise ADOT for signage on the major roadways

This MAP activation will be conducted by Fire Operations along with concurrence from the Fire Incident Commander and the Agency Administrator.

Resources

San Carlos Emergency Services

Gila County Sherriff's Office

Gila County Office of Emergency Management

Fire Information

APS

ADOT

Management Action Point 17

NAME	VALUE
Incident Name	Griffin
Cost	
Shape	MAP17_Lower_Gilson_Casino
Activated	08/27/2020
Deactivated	
Status	Active

Condition

Fire is approaching within approximately one mile of residences, private property or commercial/resort property, and is not likely to be suppressed.

Actions

Description: Line approximately one mile around private property ,residences, and the casino. There are several isolated residences to the west end of this MAP. This MAP includes the Apache Gold Casino/Hotel.

Purpose: To allow Fire Operations time to consider alternative methods of fire control as the fire approaches the ranching property. To minimize fire damage to the Sonoran Desert.

To provide adequate notification time for identified area residents to orderly evacuate the identified area as needed.

Actions: Fire Operations will evaluate alternate strategies to minimize the impact of the fire to residences or private property, also smoke impact to the residential areas and area roadways. These strategies may include retardant use, mechanical fireline, hand crews, or point protection.

Casino/Hotel - *The Casino/Hotel has a golf course to the west and north that will stop fire spread, the entire property is surrounded by gravel and asphalt parking areas. The hotel is being used to quarantine Covid 19 tribal members. San Carlos plans to have all residents shelter in place. There is a backup generator on site. Notify San Carlos Emergency Services if fire approaches.*

Cutter Airport - *If fire approaches this area Cutter Airport will be smoked out and may need to be closed. This will effect both fire aviation and general aviation.*

Residential Areas:

If need be for public safety, Fire Operations will consider coordinating with the San Carlos Emergency Services, Gila County Sheriff's Office and Office of Emergency Management to contact the identified area that they are being placed under a "Set" or "Go" notification. And what this means. If a notification is issued also establish contact with the Agency Administrator, Fire Information, and Fire Liaison, these will be responsible for coordinating and notifying their respective chains of command.

If fire is going to impact the area contact APS for electrical Shutdown.

If smoke will impact Hwy. 60 or 70 advise ADOT for signage on the major roadways

This MAP activation will be conducted by Fire Operations along with concurrence from the Fire Incident Commander and the Agency Administrator.

Resources

San Carlos Emergency Services

Gila County Sherriff's Office

Gila County Office of Emergency Management

Fire Information

APS

ADOT

Management Action Point 18

NAME	VALUE
Incident Name	Griffin
Cost	
Shape	MAP18_Skill_Center
Activated	08/27/2020
Deactivated	
Status	Active

Condition

Fire is approaching within approximately one mile of residences, private property or commercial property, and is not likely to be suppressed.

Actions

Description: Line approximately one mile around private property, residences, and the education center. This complex comprises of several large educational buildings with 20-30 residences to the northwest. This area has had some treatment done around it but will need some work if fire approaches.

Purpose: To allow Fire Operations time to consider alternative methods of fire control as the fire approaches the ranching property. To minimize fire damage to the Sonoran Desert.

To provide adequate notification time for identified area residents to orderly evacuate the identified area as needed.

Actions: Fire Operations will evaluate alternate strategies to minimize the impact of the fire to residences or private property, also smoke impact to the residential areas and area roadways. These strategies may include retardant use, mechanical fireline, hand crews, or point protection.

Residential Areas:

If need be for public safety, Fire Operations will consider coordinating with the San Carlos Emergency Services, Gila County Sheriff's Office and Office of Emergency Management to contact the identified area that they are being placed under a "Set" or "Go" notification. And what this means. If a notification is issued also establish contact with the Agency Administrator, Fire Information, and Fire Liaison, these will be responsible for coordinating and notifying their respective chains of command.

If fire is going to impact the area contact APS for electrical Shutdown.

If smoke will impact Hwy. 60 or 70 advise ADOT for signage on the major roadways

This MAP activation will be conducted by Fire Operations along with concurrence from the Fire Incident Commander and the Agency Administrator.

Resources

San Carlos Emergency Services

Gila County Sherriff's Office

Gila County Office of Emergency Management

Fire Information

APS

ADOT

Management Action Point 19

NAME	VALUE
Incident Name	Griffin
Cost	
Shape	MAP19_Upper_Gilson
Activated	08/27/2020
Deactivated	
Status	Active

Condition

Fire is approaching within approximately one mile of residences or private property and is not likely to be suppressed.

Actions

Description: Line approximately one mile around private property and residences. This area has numerous isolated residences.

Purpose: To allow Fire Operations time to consider alternative methods of fire control as the fire approaches the private property.

To minimize fire damage to the Sonoran Desert.

To provide adequate notification time for identified area residents to orderly evacuate the identified area as needed.

Actions: Fire Operations will evaluate alternate strategies to minimize the impact of the fire to residences or private property, also smoke impact to the residential areas and area roadways. These strategies may include retardant use, mechanical fireline, hand crews, or point protection.

If need be for public safety, Fire Operations will consider coordinating with the San Carlos Emergency Services, Gila County Sheriff's Office and Office of Emergency Management to contact the identified area that they are being placed under a "Set" or "Go" notification. And what this means. If a notification is issued also establish contact with the Agency Administrator, Fire Information, and Fire Liaison, these will be responsible for coordinating and notifying their respective chains of command.

If fire is going to impact the area contact APS for electrical Shutdown.

If smoke will impact Hwy. 60 or 70 advise ADOT for signage on the major roadways

This MAP activation will be conducted by Fire Operations along with concurrence from the Fire Incident Commander and the Agency Administrator.

Resources

San Carlos Emergency Services

Gila County Sherriff's Office

Gila County Office of Emergency Management

Fire Information

APS

ADOT

Management Action Point 23

NAME	VALUE
Incident Name	Griffin
Cost	
Shape	MAP23_San_Carlos
Activated	08/27/2020
Deactivated	
Status	Active

Condition

Fire is approaching within approximately one mile of residences or private and is not likely to be suppressed.

Actions

Description: Line approximately one mile around private property and residences. This area includes the Cottonwood Wash, San Carlos and San Carlos Lake areas.

Purpose: To allow Fire Operations time to consider alternative methods of fire control as the fire approaches the private property. To minimize fire damage to the Sonoran Desert.

To provide adequate notification time for identified area residents to orderly evacuate the identified area as needed.

Actions: Fire Operations will evaluate alternate strategies to minimize the impact of the fire to residences or private property, also smoke impact to the residential areas and area roadways. These strategies may include retardant use, mechanical fireline, hand crews, or point protection.

The recreations area around San Carlos lake will need to be evacuated, this area has minimal egress and will need to be evacuated early.

If need be for public safety, Fire Operations will consider coordinating with the San Carlos Emergency Services, Gila County Sheriff's Office and Office of Emergency Management to contact the identified area that they are being placed under a "Set" or "Go" notification. And what this means. If a notification is issued also establish contact with the Agency Administrator, Fire Information, and Fire Liaison, these will be responsible for coordinating and notifying their respective chains of command.

If fire is going to impact the area contact APS for electrical Shutdown.

If smoke will impact Hwy. 70 advise ADOT for signage on the major roadways

This MAP activation will be conducted by Fire Operations along with concurrence from the Fire Incident Commander and the Agency Administrator.

Resources

San Carlos Emergency Services

Gila County Sherriff's Office

Gila County Office of Emergency Management

Fire Information

APS

ADOT

Management Action Point 24

NAME	VALUE
Incident Name	Griffin
Cost	
Shape	MAP24_North_Fairgrounds
Activated	08/27/2020
Deactivated	
Status	Active

Condition

Fire is approaching within approximately one mile of residences, private property or the Gila County Fairgrounds, and is not likely to be suppressed.

Actions

Description: Line approximately one mile to the east of private property, residences and the fairground. There are two housing areas just north of the fairgrounds. The fairgrounds is being used as ICP.

Purpose: To allow Fire Operations time to consider alternative methods of fire control as the fire approaches the private property and the fairgrounds.

To minimize fire damage to the Sonoran Desert.

To provide adequate notification time for identified area residents to orderly evacuate the identified area as needed.

Actions: Fire Operations will evaluate alternate strategies to minimize the impact of the fire to residences or private property, also smoke impact to the residential areas and area roadways. These strategies may include retardant use, mechanical fireline, hand crews, or point protection.

Fairgrounds:

For the most part the area around the fairgrounds is bare dirt and gravel. If fire approaches it is planned to shelter in place, smoke sensitive personnel may want to evacuate until the threat has dissipated.

Residential Areas:

If need be for public safety, Fire Operations will consider coordinating with the Gila County Sheriff's Office and Office of Emergency Management to contact the identified area that they are being placed under a "Set" or "Go" notification. And what this means. If a notification is issued also establish contact with the Agency Administrator, Fire Information, and Fire Liaison, these will be responsible for coordinating and notifying their respective chains of command.

If fire is going to impact the area contact APS for electrical Shutdown.

If smoke will impact area highways advise ADOT for signage on the major roadways

This MAP activation will be conducted by Fire Operations along with concurrence from the Fire Incident Commander and the Agency Administrator.

Resources

Gila County Sherriff's Office

Gila County Office of Emergency Management

Fire Information

APS

ADOT

Management Action Point 25

NAME	VALUE
Incident Name	Griffin
Cost	
Shape	MAP25_South_Fairgrounds
Activated	08/27/2020
Deactivated	
Status	Active

Condition

Fire is approaching within approximately one mile of residences, private property, commercial/industrial property or the High School, and is not likely to be suppressed.

Actions

Description: Line approximately one mile to the east of residences, private property, commercial/industrial property or the High School. This area includes the ADOT yard, a Resort the High Desert High School and several private residences.

Purpose: To allow Fire Operations time to consider alternative methods of fire control as the fire approaches the private property, high school or ADOT yard.

To minimize fire damage to the Sonoran Desert.

To provide adequate notification time for identified area residents to orderly evacuate the identified area as needed.

Actions: Fire Operations will evaluate alternate strategies to minimize the impact of the fire to residences or private property, also smoke impact to the residential areas and area roadways. These strategies may include retardant use, mechanical fireline, hand crews, or point protection.

ADOT Yard:

The area around the ADOT yard is gravel parking lot and should not need clearing.

High School:

The High Desert school is one way in/out. It has had some treatment done around it but will need work. And personnel at the school should be evacuated.

Residential Areas:

If need be for public safety, Fire Operations will consider coordinating with the Gila County Sheriff's Office and Office of Emergency Management to contact the identified area that they are being placed under a "Set" or "Go" notification. And what this means. If a notification is issued also establish contact with the Agency Administrator, Fire Information, and Fire Liaison, these will be responsible for coordinating and notifying their respective chains of command.

If fire is going to impact the area contact APS for electrical Shutdown.

If smoke will impact area highways advise ADOT for signage on the major roadways

This MAP activation will be conducted by Fire Operations along with concurrence from the Fire Incident Commander and the Agency Administrator.

Resources

Gila County Sherriff's Office

Gila County Office of Emergency Management

Fire Information

APS

ADOT

1.9. Cost

Estimated Final Cost

NAME	VALUE
Estimated Final Cost	\$12,000,000
Method(s) Used	

1.10. Rationale

Rationale for the Griffin Fire 8/26/2020

Risk Assessment

1. What are the critical values at risk. Highway 60/77, timber, T & E habitat, ponderosa pine forest, wilderness, adjacent forest lands and activities, cultural plants and sites, private property inholdings, Highway 60/77, grazing infrastructure, Carol Springs communications site, Seneca Lake recreation area, Timber Camp recreation area, historical structures, smoke impacts to communities in the area
2. What is the chance the critical values will be impacted, and if so what are the consequences. Highway 60/70 has already been impacted, as well as smoke impacts to the communities listed above. Current activities are focusing on completing control features and perimeter control.
3. What are the opportunities to manage the fire to meet land management plan objectives. Where a management action, such as a burnout is planned, it should be implemented in such a way that it produces beneficial fire effects, whenever possible.
4. What are the possible low probability/high consequence events. High consequence events include structure/infrastructure loss on federal, state and private lands, loss of commercial forest on the San Carlos Apache Reservation and atypical fire behavior causing loss of T&E habitat.
5. Who are the stakeholders that should be consulted prior to making a decision. Gila County Emergency Services, ADOT, Grazing permittees, SRP, APS, Gila County SO, DPS, City of Globe/Claypool, City of Miami, San Carlos Tribal Emergency Response Commission, San Carlos Apache Tribe

Risk Decision 1. What alternatives (objectives, strategies and tactics) are being considered. Where safe and feasible to do so, direct attack will be used. In light fuels and moderate terrain and light winds, one foot in the black is the safest method. Where terrain is extremely rugged and fuel loading is high, indirect tactics should be utilized. The intent is to minimize firefighter exposure by choosing where and when to engage the fire.

2. What is the exposure to responders for the alternatives being considered. As discussed above, the objective is to limit exposure to firefighters by choosing when and where to engage the fire. Direct tactics will be utilized where terrain and fire behavior allows, providing good access to the black (safety zone) but more exposure to fire front. Where indirect tactics are being used, exposure issues will be unburned fuel between firefighters and fire and longer duration line prep time. Working along natural and man-made features (roads, trails, dry washes) will facilitate indirect options.
3. What is the relative probability of success associated with the alternatives being considered? With high wind events, the probability of direct attack on the active flanks of the fire is low. Indirect options and point protection will have a higher probability of success until the wind event(s) decrease. Under more favorable conditions (decrease in wind) direct attack options in the light fuels and indirect options utilizing roads, natural barriers, etc. will have a higher rate of success.
4. What alternative provides for the best balance between the desired outcome and exposure to responders. Based on current and expected conditions, a mix of direct and indirect attack would balance exposure of personnel while minimizing adverse impacts to values at risk.
5. What are the critical thresholds that will trigger reconsideration of the proposed alternative and how will they be monitored. If the fire escapes the planning area or further threatens VARs, MAPs will be developed to identify trigger points for potential actions based on the VARs (see list in Information Section).

Rationale Summary After meeting with all land agency administrators involved, the decision remains to suppress this fire and limit negative impacts to fire sensitive VARs and social/economic impacts to range permittees, mine operations, communities (local and metropolitan), and other stakeholders who utilize the public lands involved or are otherwise affected. The Life First Commitment of making reasonable and prudent risk-based decisions to accomplish the agency mission while minimizing exposure to hazards for firefighters and the public remains the top priority. The rationale for our decision is based on information contained in various Land Management Plans and Fire Management Plans that are analyzed in this document. The decision heavily considers the Relative Risk Assessment and Course of Action described in this document. We believe our decision has the highest likelihood of success for meeting incident objectives, especially firefighter safety. We considered larger and smaller incident management organization and concluded a Type 1 Incident Management Team to be the best resource for the incident. The primary decision makers include the Agency Administrators of the two impacted land management jurisdictions. These are the Bureau of Indian Affairs, San Carlos Agency Acting Superintendent; and the US Forest Service, Tonto National Forest, District Ranger. The fire is on two federal jurisdictional areas. Considered are primary values at risk (timber, T & E habitat, ponderosa pine forest, wilderness, adjacent forest lands and activities, cultural plants and sites, private property inholdings, Highway 60/77, grazing infrastructure, Carol Springs communications site, Seneca Lake recreation area, Timber Camp recreation area, historical structures), firefighter exposure to hazards, the forecasted weather, the severe drought conditions, the current stress on vegetation, the lack of surface water availability, the remote access, fire behavior modeling, likelihood of success and cost. The suppression strategy we have selected calls for full suppression in order to mitigate the risk to firefighters in high exposure areas. The course of action in this document offers the best means to mitigate risk exposure to the firefighters. Providing for firefighter and public safety is always the number one priority. There is no loss of infrastructure or damage to property or resources that is more important than providing for firefighter and public safety. Use tactics to minimize or mitigate fire intensity for the identified values at risk, establish control lines that minimize firefighter exposure that present the best probability of success. Based on current and expected weather and fire behavior, the courses of action developed should meet the objectives of the incident. Values at risk, natural, social, and economic, the safety of public, cooperators and stakeholders as well as the suppression resources are being addressed. Providing accurate and timely information about the fire to all of the Agency line officers, Tribal Leaders, Cooperators and the public will help the surrounding communities and visitors stay informed of the facts about the fire. Line officers will keep close watch on validating this decision throughout the term of the incident. If the situation escalates to exceed the planning perimeter, and there are significant unpredicted changes in fire behavior, there are major accidents/injuries, or the fiscal approval levels of line officers is exceeded a new decision is required.