



# Bush Incident Decision

Published  
06/25/20 11:00

## Table of Contents

1. Decision .....	2
1.1. Decision Summary.....	2
1.2. Incident Information.....	3
1.3. Weather.....	6
1.4. Modeling.....	10
1.5. Risk.....	11
1.6. Benefits.....	19
1.7. Objectives.....	20
1.8. Course of Action.....	29
1.9. Cost.....	49
1.10. Rationale.....	50

# 1. Decision

## 1.1. Decision Summary

### Decision Information

NAME	VALUE
Published	06/25/2020 11:00 CDT
Estimated Cost	\$14,000,000
Incident Owner(s)	Mary Lata, CorDell Taylor, Taiga Rohrer, Dana Bagnoli
Editor(s)	Arthur Gonzales, Andrew Leiendecker, Matthew Lane, thomas torres, Wesley Hall
Reviewer(s)	Bradley Johnson, Dave Ramirez, Erick Stemmerman, Kelly Jardine, Matthew Lane, Taiga Rohrer
Approver(s)	thomas torres
Natl Preparedness Level	3

### Decision History

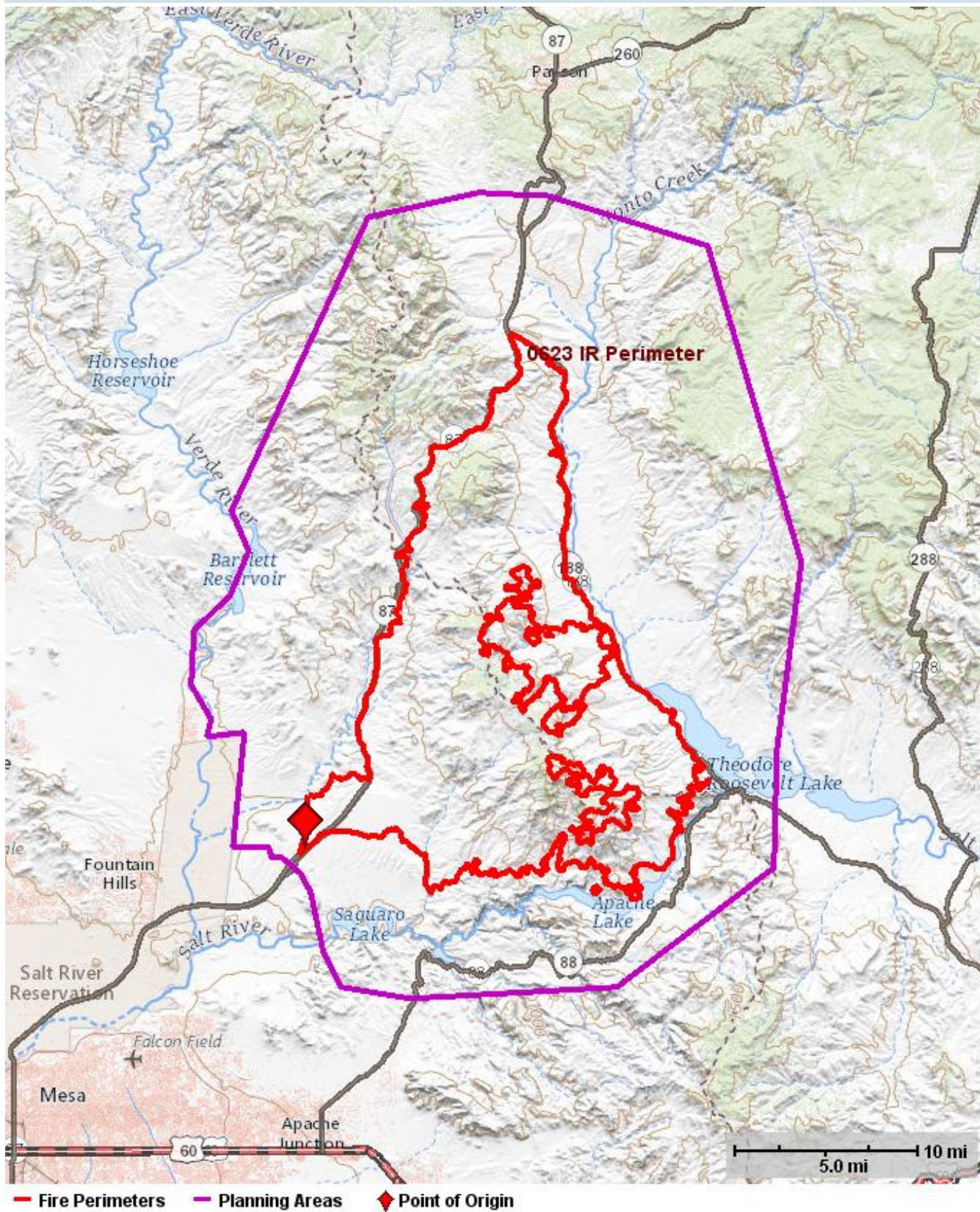
Editor Name	Action	Date (CDT)	Comment
torres, thomas	Published	06/25/2020 11:00	
torres, thomas	Approved	06/25/2020 11:00	
Taylor, CorDell	Review Requested	06/24/2020 17:41	
Taylor, CorDell	Review Requested	06/24/2020 17:39	

## 1.2. Incident Information

### Incident Information

NAME	VALUE
Incident Name	Bush
Unique Fire Identifier	2020-AZTNF-001581
Responsible Unit Name	Tonto National Forest
FireCode	M6M6
P-Code	P3M6M6
Point of Origin	33.6257N / 111.562 W
Incident Size	186,967 acres
Latest WFDSS Perimeter Size	186,989 acres
Incident Cause	Human
Incident Type	Wildfire
Incident Discovery	06/13/2020 13:45
Contained	
Controlled	
Out	
Jurisdictional Unit	AZTNF - Tonto National Forest
Jurisdictional Agency(s)	USFS
Geographic Area (prep level)	Southwest (4)
Owner Name(s)	Mary Lata, CorDell Taylor, Taiga Rohrer, Dana Bagnoli

Incident Map



Bush Fire - 6/13

Photo 4

Helicopter view





# 1.3. Weather

## Fire Weather Zone Forecast

---

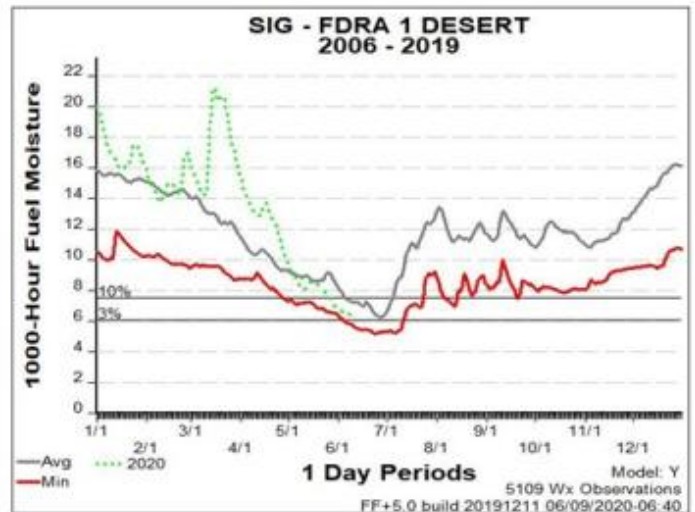
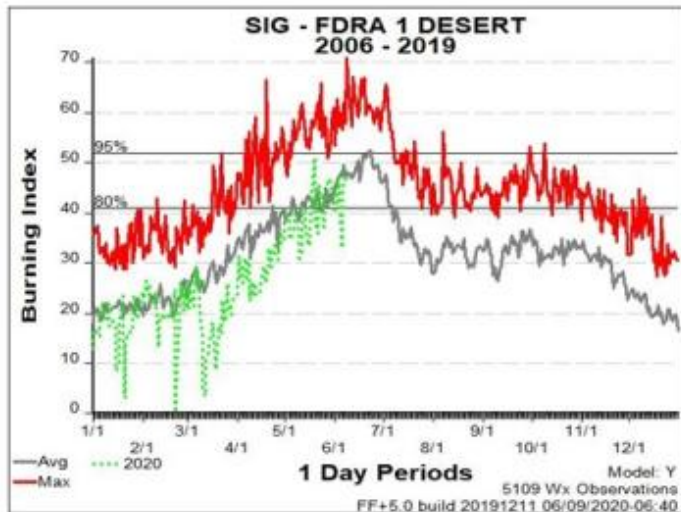
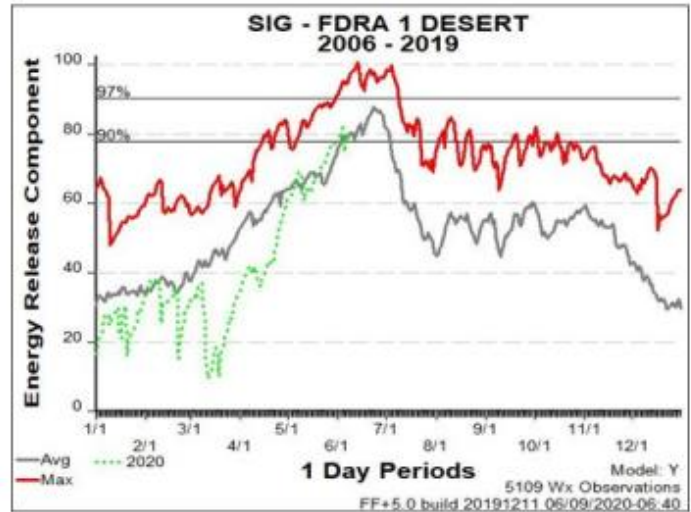
000  
FNUS55 KPSR 242049  
FWFPSR  
Fire Weather Planning Forecast for Southwest and South-Central  
Arizona and Southeast California  
National Weather Service Phoenix AZ  
149 PM MST Wed Jun 24 2020  
.DISCUSSION...  
High pressure aloft will remain strong, keeping high temperatures several degrees above seasonal normals through Friday. Hotter deserts will climb to around 110 each day. Humidity will stay low Thursday and Friday with many lower deserts seeing single digit minimum RH values. Some lower deserts west of Phoenix may see humidity climb a bit Friday with values rising into the 10 to 15 percent ballpark. Winds will stay on the breezy side each afternoon and evening, favoring the southwest with gusts 20 to 25 mph possible. Given the low RH values and locally gusty winds, elevated fire danger will persist through the period.  
Note...Additional Fire Weather Forecast information can be found in the Area Forecast Discussion. See product PHXAFDPSR.  
AZZ133-250900-  
Southern Gila County/Tonto National Forest Foothills-  
Southern Tonto NF/West San Carlos BIA/South Portion Ft Apache BIA/  
CAZ-  
149 PM MST Wed Jun 24 2020  
.TONIGHT...  
\* Sky/weather.....Mostly clear.  
\* Min Temperature.....62-77.  
\* 24 hr trend.....Little change.  
\* Max Humidity.....16-24 pct.  
\* 24 hr trend.....Little RH change.  
\* Winds - 20 foot...Slope/Valley..West 5 to 10 mph in the evening becoming southeast after midnight.  
\* Winds...10000 FT MSL.....Southwest 15 to 25 mph.  
\* Chance of Precip.....0 percent.  
\* LAL.....1.  
.THURSDAY...  
\* Sky/weather.....Partly sunny.  
\* Max Temperature.....93-107.  
\* 24 hr trend.....Little change.  
\* Min Humidity.....5-10 pct.  
\* 24 hr trend.....Little RH change.  
\* Winds - 20 foot...Slope/Valley..South 5 to 10 mph in the morning becoming southwest 5 to 15 mph in the afternoon.  
\* Winds...10000 FT MSL.....Southwest 20 to 30 mph.  
\* Chance of Precip.....0 percent.  
\* LAL.....1.  
\* Haines High Level Index.....6 high potential for large plume dominated fire growth.  
.THURSDAY NIGHT...  
\* Sky/weather.....Partly cloudy.  
\* Min Temperature.....62-77.  
\* 24 hr trend.....Little change.  
\* Max Humidity.....15-23 pct.  
\* 24 hr trend.....Little RH change.  
\* Winds - 20 foot...Slope/Valley..West 5 to 15 mph in the evening becoming east 5 to 10 mph after midnight.  
\* Winds...10000 FT MSL.....Southwest 20 to 30 mph.  
\* Chance of Precip.....0 percent.  
\* LAL.....1.  
.FRIDAY...  
\* Sky/weather.....Partly sunny.  
\* Max Temperature.....92-105.  
\* 24 hr trend.....Little change.  
\* Min Humidity.....6-11 pct.  
\* 24 hr trend.....Little RH change.  
\* Winds - 20 foot...Slope/Valley..South 5 to 10 mph in the morning becoming southwest 5 to 15 mph in the afternoon.  
\* Winds...10000 FT MSL.....Southwest 20 to 30 mph.  
\* Chance of Precip.....0 percent.  
\* LAL.....1.  
\* Haines High Level Index.....5 moderate potential for large plume dominated fire growth.  
.EXTENDED...  
.SATURDAY...Mostly clear. Lows 61-76. Highs 89-103. Southwest winds 10 to 20 mph. Minimum relative humidity may be lower than 15 percent.  
.SUNDAY...Mostly clear. Lows 58-76. Highs 86-100. Southwest winds 10 to 20 mph.  
.MONDAY...Mostly clear. Lows 57-73. Highs 83-97. Southwest winds 10 to 20 mph.

Fire Weather Zone Forecast

.TUESDAY...Mostly clear. Lows 57-71. Highs 84-97.  
.WEDNESDAY...Mostly clear. Lows 57-73. Highs 86-100.  
\$\$  
.8 TO 10 DAY OUTLOOK...Thursday July 2nd through Saturday July  
4th: Below normal temperatures and below median precipitation.

ERC Sonoran Desert FDRA

ERC chart Sonoran Desert



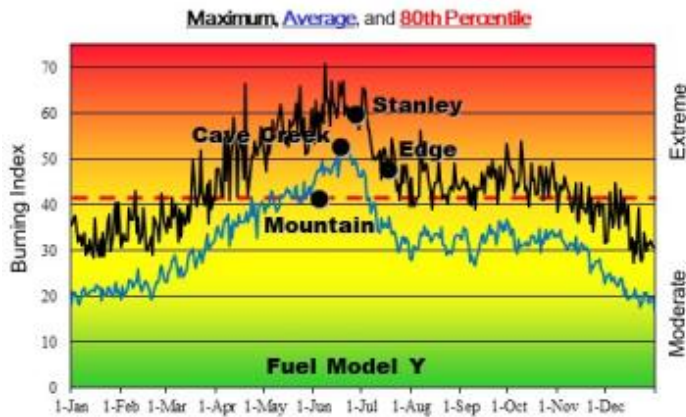
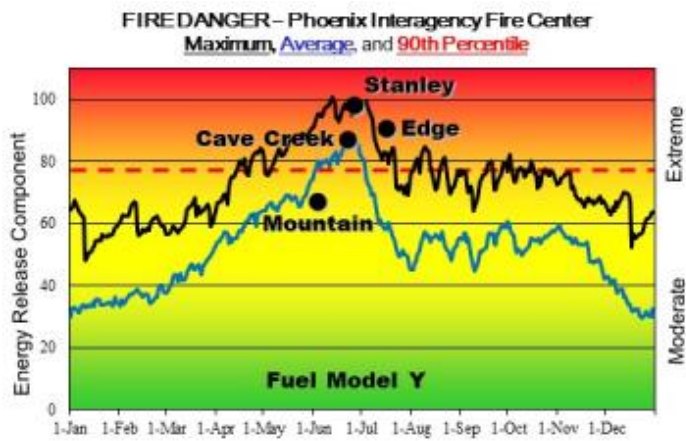
Bush fire - 6/13 near origin

[Photo 2](#)

Parking area







**Fire Danger Area: Sonoran Desert**

- Phoenix Interagency Fire Management Area
- Tonto NF, San Carlos Agency, Pima/Salt River Agencies, and Tonto National Monument.
- Fire Wx Forecast Zone AZ132
- Sunset Point\* (020510), Globe\* (020601) Tonto Basin\* (020606) and San Carlos 1\* (020608) RAWS
- \*Meets NWCG Weather Station Standards



**Fire Danger Graph Interpretation:**



- EXTREME** - Use extreme caution
- CAUTION** - Watch for change
- MODERATE** - Lower potential, but always be aware

- MAXIMUM** - Highest ERC / BI by day for 2006 - 2019
- AVERAGE** - Average daily ERC / BI value for 2006 - 2019
- 90th Percentile ERC** - Only 10% of the days from 2006 - 2019 were over **78**
- 80th Percentile BI** - Only 20% of the days from 2006 - 2019 were over **41**

**Local Thresholds - Watch Out:**

Erratic Fire behavior associated with thunderstorm activity. Watch for overnight temps above 90 degrees and poor night time RH recovery. Sundowner (strong evening down slope) winds can develop quickly. Extreme Fire Behavior when RH is less than 10% or live fuel moistures fall below 75%.

**Remember what Fire Danger tells you:**

- ✓ Energy Release Component gives seasonal trends calculated from 13:00 temperature and RH, daily temperature & RH ranges, and precipitation duration
- ✓ Burning Index gives day to day fluctuations calculated from 13:00 temperature, wind, and RH, daily temperature & RH ranges, and precipitation duration
- ✓ Watch local conditions and variations across the landscape - Fuel, Weather, Topography

**Past Fire Experience:**

**Tonto NF** Edge Complex July 16, 2005 (ERC 91, BI 47), 72,000 acres. Phoenix Weather Temp. 112, RH 11, Windspeed 15 mph.

**Tonto NF** Cave Creek Complex June 21, 2005 (ERC 82, BI 53), 243,950 acres. Phoenix Weather Temp. 112, RH 8, Windspeed 8 mph.

**San Carlos Agency** Stanley Fire June 26, 2011 (ERC 92, BI 58), 8,832 acres. San Carlos 1 RAWS Temp. 107, RH 7, Windspeed 12 mph.

**Tonto NF** Mountain Fire June 7, 2019 (ERC 68, BI 41), 7,470 acres. Tonto Basin RAWS Temp. 97, RH 12, Windspeed 7 mph.

Check with local personnel about annual grass fuel loading. Large fires can occur at low ERC if annual grasses and fine fuels are continuous enough to carry a fire.

Produced May 11, 2020 using FireFamily+ v5.0 (PIFC\_FFP\_DB\_updated\_05\_07\_20.mdb)

Responsible Agency: Phoenix Interagency Fire

# 1.4. Modeling

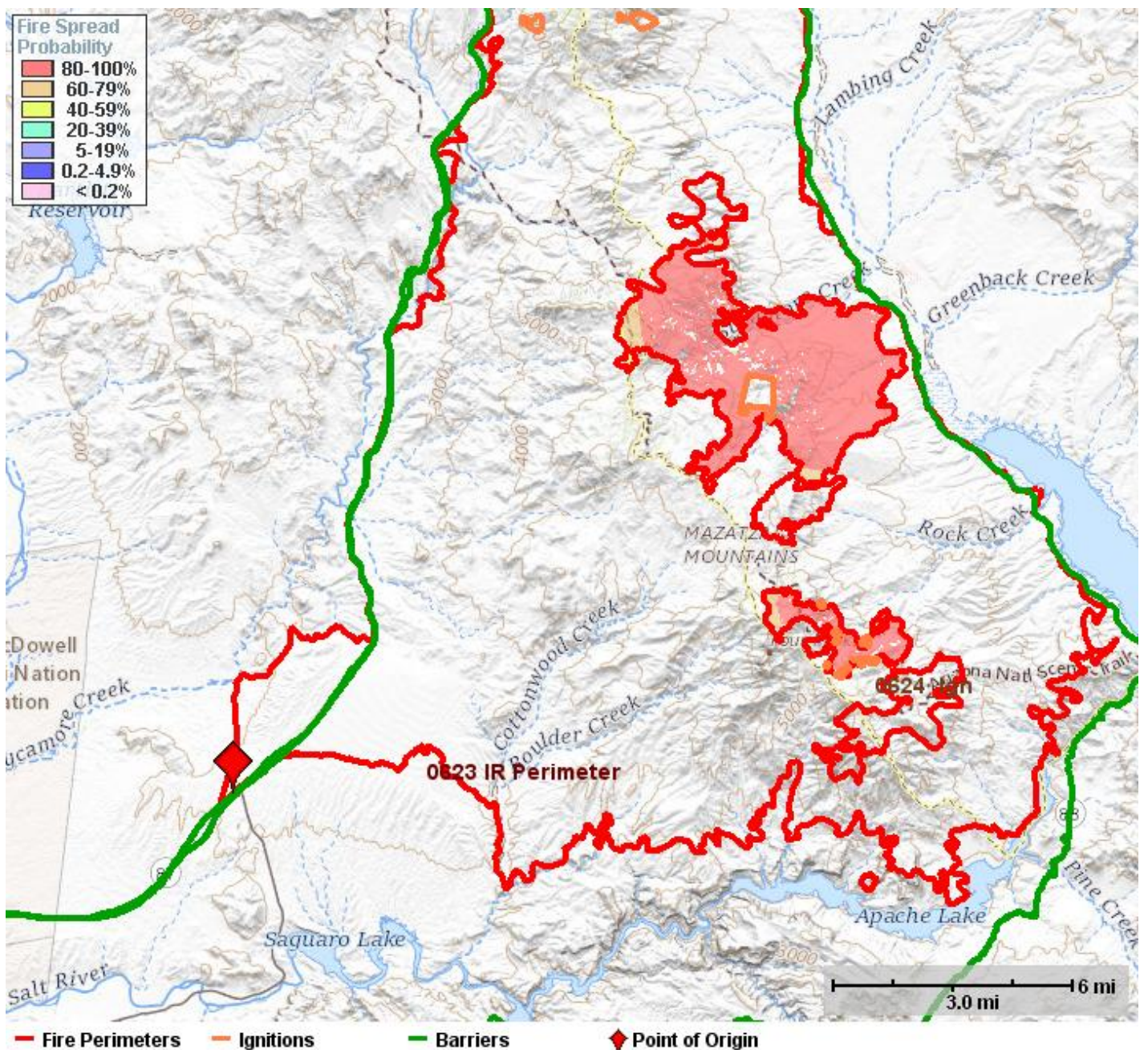
FSPro (FSPro\_0624\_7Day\_Decision\_Run - Started on 06-24-2020)

## FSPro General Information

NAME	VALUE
Analysis Name	FSPro_0624_7Day_Decision_Run
Analysis Start	06/24/2020
Duration	7 days
Simulations	5000 fires

Time (CDT)	User	Note
06/24/2020 17:13	Bagnoli, Dana	This 7 day run models the spread probability of the intense IR heat from 0623 and the 6 hr VIIRS heat showing on the morning of 0624. The two large pockets of unburned fuel on the side end of the fire are expected to be consumed within the next 7 days, the continued fire behavior in these areas is not expected to threaten the containment lines.

## FSPro Analysis 'FSPro\_0624\_7Day\_Decision\_Run'





## 1.5. Risk

### Relative Risk

NAME	VALUE
Relative Risk	High
Duration	Moderate
Saved By	Taylor, CorDell
Completed	06/18/2020 20:46 CDT

### Relative Risk Notes

Fire potential is always high in the weeks before monsoon rains begin. Typically, monsoon starts in late June to early July. This year there is above average potential for undesirable fire effects and behavior in the desert. The risk potential is the result of invasive grass production from two years of average to above average precipitation that has increased fine fuel loading. Fire behavior this time of year puts many values at risk that are not adapted to fire, or are highly departed from historic conditions.

### Values Notes

Within the planning area there are:

#### NATURAL/CULTURAL/RESOURCE

\*2 Occupied Gila Top Minnow sites (Mud Springs and Hidden Water Springs.)

\*at least 2 MSO PACs

\*Sycamore Creek, which has numerous sensitive species (fauna)

\*Retardant avoidance areas associated with threatened and endangered species

\*Bald eagle cliff nests near Saguaro Lake.

\*All of the Sonoran Desert area is habitat for Desert Tortoise

\*4 Peaks Study Site for Sonoran Desert Tortoise

\*Sugar Loaf Study Area

\*Cane Springs (or Brown Springs?) Cabin

\*Arizona G&F Cabin

\*Prehistoric sites are found throughout the planning area

\*Range Improvements (fences, tanks, etc. ) throughout the planning area

\*Two herds, one to the north and one to the east of the current location of the fire. ~200 head, 31 bulls, 20 horses (average).

\*Two new wildlife waters that G&F just put in near Edwards Park and Big Pine Flat

\*Four Peaks Wilderness

\*Livestock

\*Camp Reno Historic cavalry camp

#### INFRASTRUCTURE

Bush Highway

Hwy 87

Hwy 188

Broadcast site of of FS143

Amethyst Mine

High Voltage KV power lines (APS)

Dos S Ranch

Sunflower Estates

Sunflower USFS work center

Cross F Ranch

Diamond Ranch

Mt Ord lookout and communication site

#### COMMUNITIES

Tonto Basin

Punkin Center

Jake's Corner

Sunflower

Multiple private inholdings and structures

Deer Creek

Gisela

Rye

#### RECREATION:

Tonto Basin and Theodore Roosevelt Lake

Apache, Canyon and Saguaro Lakes

Butcher Jones Recreation Site

Saguaro Del Norte Recreation Site (including a marina)

Pobrecito Recreation Site

Lower Sycamore Staging Area

Four Peaks Staging Area

Sugarloaf Staging Area

Mesquite Stating Area

Multiple trails, NFS roads, ORV routes, including the Arizona National Scenic Trail

Proximity & Threat of Fire to Values

The fire is continuing to burn with extreme rates of spread in the grass and brush fuel models with actively burning throughout the night. Winds continue to be a main contributor for fire spread. Night, winds are blowing downhill into Tonto Basin. The fire is already burning in the Sonoran Desert (not beneficial), and is moving towards some of the values listed above. Given current and expected fire behavior and the current proximity of fire to the values listed above, the Threat of Fire to Values is rated as high.

Social/Economic Concerns

The population of Tonto Basin and Punkin Center includes a substantial percentage of senior citizens, many of whom are vulnerable to smoke impacts.

Highway and recreation site closures are already pending, and could have significant effects to local tourism and economics. The impact of closures is exacerbated as communities are trying to reopen after restrictions related to COVID-19.

Travel disruptions will be significant because Hwy 87 is one of the main arteries between the Mogollon Rim and the Phoenix Valley.

This alone will be a significant impact, routing a lot of traffic through Tonto Basin and/or Camp Verde (and Interstate 17) when Highway 87 is closed.

There is potential to also close the Bush Highway earlier than usual because of additional traffic - further increasing the traffic on SR88 and SR 260

Hazards Notes

Fuel conditions are high. Two years of above average precipitation through the winter and spring have produced significantly increased production of invasive grasses. These grasses now have a litter layer from last year, as well as above average production from this year's crop. Generally, desert surface vegetation is not contiguous, but the grasses this year are providing contiguous fuels over large areas.

Current ERCs are in the 95%ile in both the Brush and Sonoran FDRAs. BI for both FDRAs is currently in the 97th %ile. Live fuel moistures are currently plummeting, and fuel moistures for woody species (oak/manzanita) are well below levels where they burn readily.

The fire has exhibited extremely active behavior, with 50 foot flame lengths along the highway that sustained spread across SR87, with short range spotting 100

Potential Fire Growth

Good potential for alignment, with no significant barriers. The fire growth is expected to increase in areas with steeper slopes and, as it gets higher in elevation, chaparral (dense, decadent shrubby fuel), and Arizona Cypress.

Probability Notes

Time of Season

Fire is active late in the season with 2 to 3 weeks until onset of typically season ending event from monsoonal effects. Monsoon precipitation is predicted to be on time starting in late June to early July

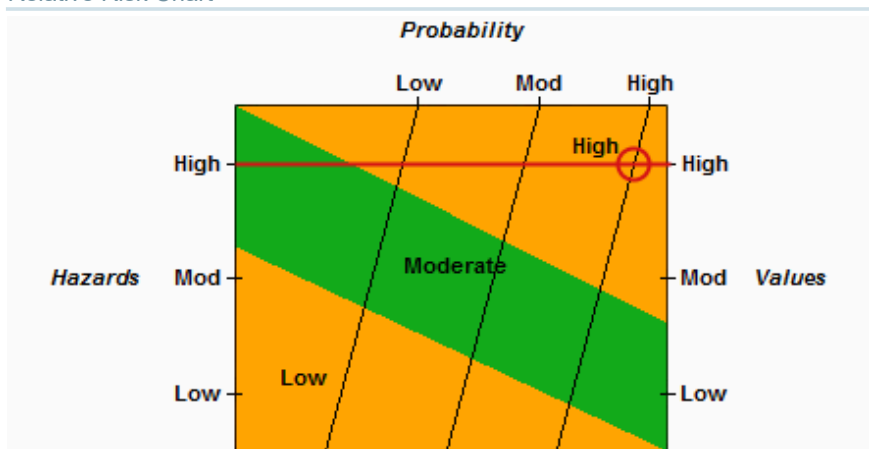
Barriers to Fire Spread

Firing operations along Hwy 87 and Hwy 188 will act as a barrier to spread on the West and east flanks of the fire. There are very few barriers to fire spread to the north now that the fire is established North around Mt Ord between Hwy 87 and Hwy 188.

Seasonal Severity

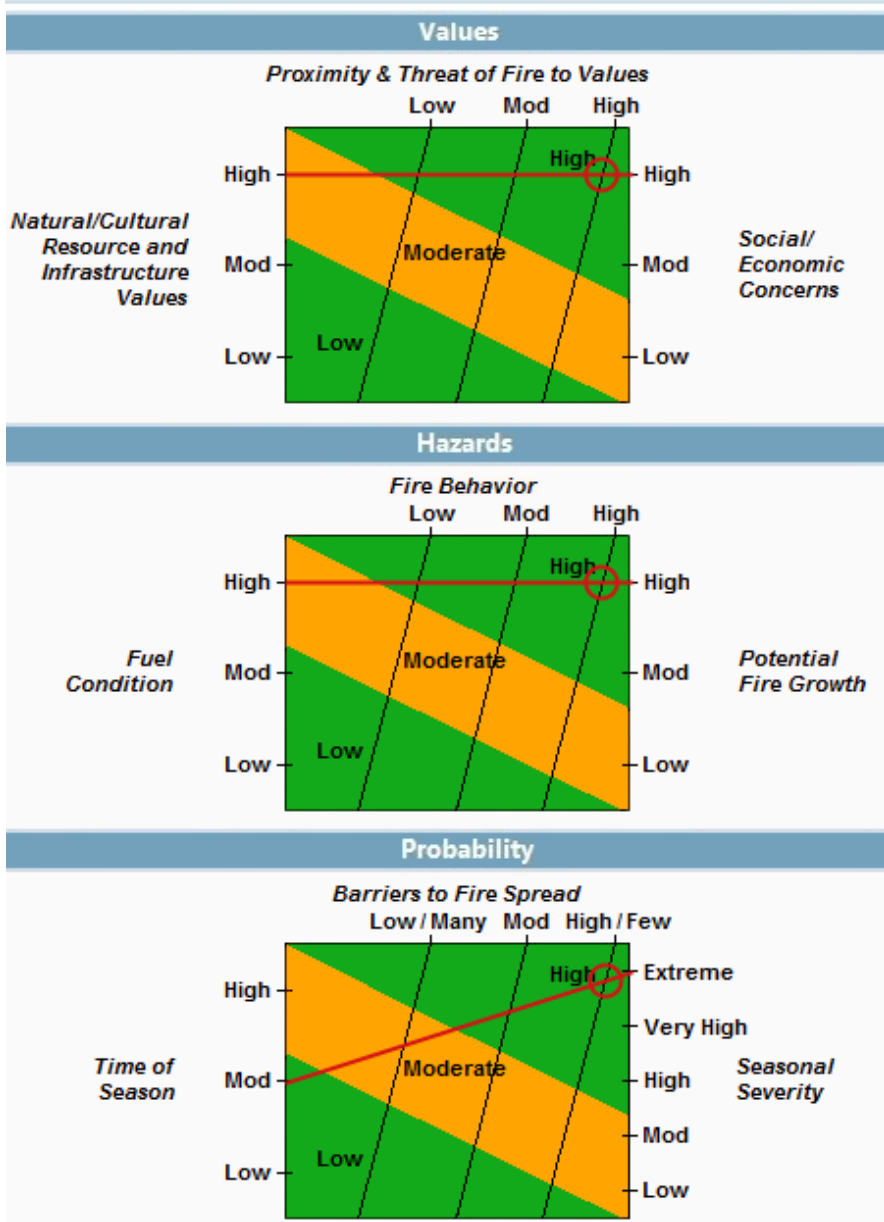
Currently indices, weather, and fuel conditions are at extreme for the season. While they may not be out of the ordinary for this time of year, we are currently at the peak severity for the southwest.

Relative Risk Chart





Relative Risk Inputs



Organization Assessment

NAME	VALUE
Unit Recommended Org	Type 3
Saved By	Taylor, CorDell
Completed	06/24/2020 12:13 CDT

Organization Assessment Notes

The reduction of fire behavior and increase of perimeter containment the T3 IMT organization should be a good fit for this fire as it transitions back to the local unit. Relative risk factors remain 'high' because of known values at risk and re-opening the highways with firefighters still engaged coupled with dry, hot weather conditions and rugged terrain. External influences have moderated due to the opening of highways and less smoke that would be visible from the greater Phoenix, AZ area, Payson and Tonto Basin.

Relative Risk Notes

Fire potential is always high in the weeks before monsoon rains begin. Typically, monsoon starts in late June to early July. This year there is above average potential for undesirable fire effects and behavior in the desert. The risk potential is the result of invasive grass production from two years of average to above average precipitation that has increased fine fuel loading. Fire behavior this time of year puts many values at risk that are not adapted to fire, or are highly departed from historic conditions.

## Implementation Difficulty Notes

### Potential Fire Duration

Duration is listed as moderate. Monsoon precipitation is predicted to be on time, though temperatures will be above normal. Typically, monsoon starts in late June to early July, though it can often be a week or two later in the Phoenix Valley because of the heat load accumulated at lower elevations. The fire will continue to burn islands of interior pockets of fuels. Fire conditions/danger is still extreme, but with most of the perimeter fuels have been burned out and spotting potential has been significantly lessened..

### Incident Strategies

Ground resources will be needed to continue suppressing the fire in areas of high values at risk. The fire threat to high values have decreased with several suppression efforts including direct attack and firing operations.

### Functional Concerns

With the down-sizing of resources because of suppression effort on containment lines and highways logistical support would likely be simplified. Planning elements would be available from the local level. It is expected that media and public interest will stay elevated until road closures are lifted and then should start trending to lower levels of interest.

## Socio/Political Concerns Notes

### Objective Concerns

The primary objective for the Bush Fire is to put it out as quickly and safely as possible.

Covid-19 is expected to increase the active interest in the management of this incident on the part of the public, the media, and cooperating agencies.

### External Influences

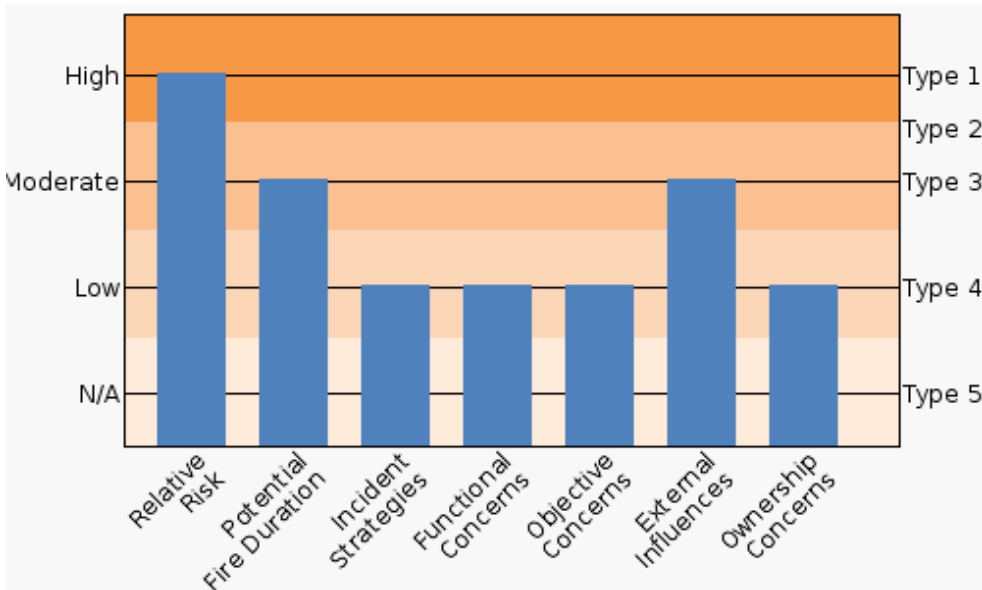
Covid-19 concerns are as described above.

There is potential for limited smoke impacts in Tonto Basin with interior burning still occurring.

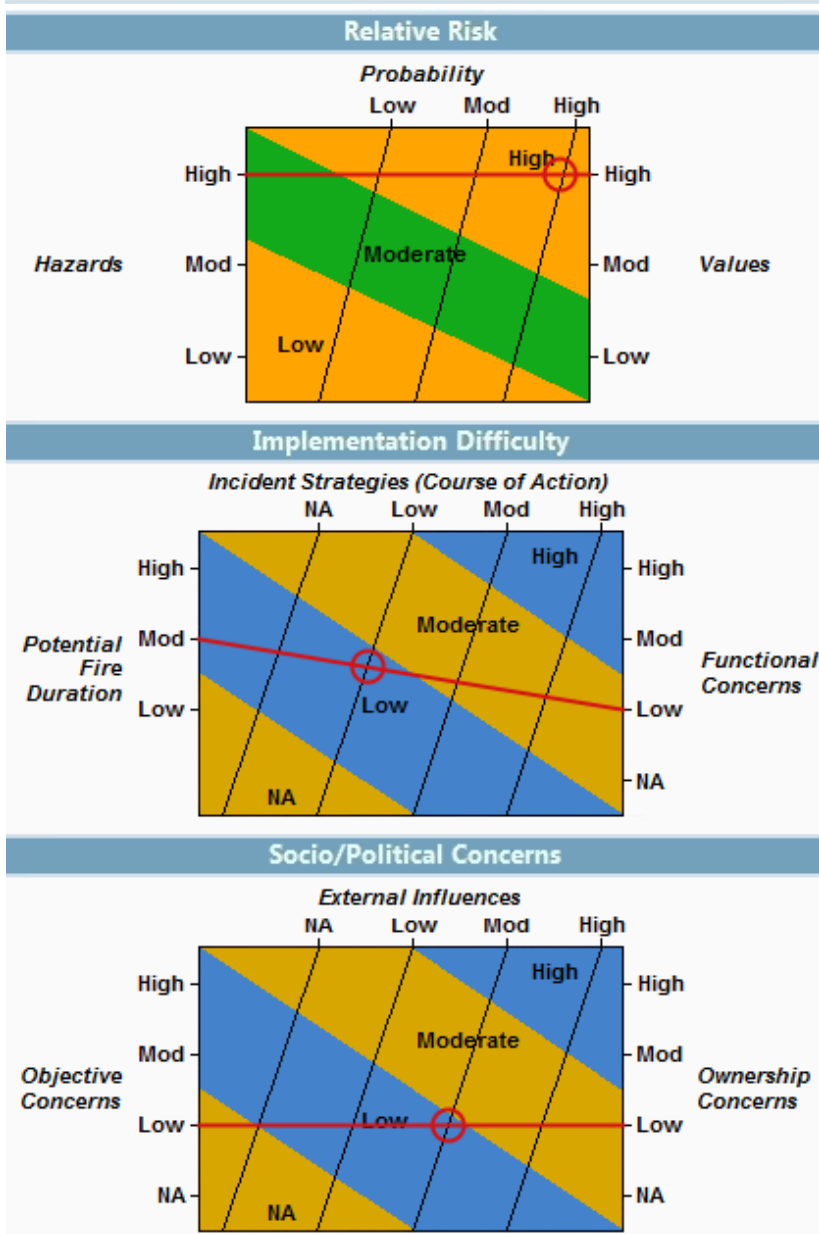
### Ownership Concerns

The fire has been suppressed to areas of good holding features. The majority of the Fire is on USFS jurisdictional lands with some small lands of State and private in-holdings.

Organization Assessment Chart



Unit Recommended Org:Type 3



Planning Area Values Inventory Generated at 06/17/2020 23:34

NAME	VALUE
Planning Area Name	06/18/2020 22:47
Incident Name	Bush
Planning Area Size	726,502 acres

Category	Value	Data Source	Currency	Coverage
AZTNF - Land / wilderness	63,404 acres	AZTNF		Unit
AZTNF - Lands / Designations / Special Mgt Areas	52,581 acres	AZTNF		Unit
AZTNF - Minerals / Hazard Cleanp Sites	11 acres	AZTNF		Unit
AZTNF - Minerals / High Risk Repository	7 acres	AZTNF		Unit
AZTNF - Mining / Mercury Mines	16	AZTNF		Unit
AZTNF - Strategic Response / POD_100_Restore	25,015 acres	AZTNF		Unit
AZTNF - Strategic Response / POD_133_Exclude	2,462 acres	AZTNF		Unit

Category	Value	Data Source	Currency	Coverage
AZTNF - Strategic Response / POD_139_Restore	1,914 acres	AZTNF		Unit
AZTNF - Strategic Response / POD_35_Restore	2,074 acres	AZTNF		Unit
AZTNF - Strategic Response / POD_36_Restore	1,444 acres	AZTNF		Unit
AZTNF - Strategic Response / POD_39_Restore	6,158 acres	AZTNF		Unit
AZTNF - Strategic Response / POD_46_Protect	8,231 acres	AZTNF		Unit
AZTNF - Strategic Response / POD_47_Protect	6,817 acres	AZTNF		Unit
AZTNF - Strategic Response / POD_50_Protect	9,769 acres	AZTNF		Unit
AZTNF - Strategic Response / POD_57_Restore	31,285 acres	AZTNF		Unit
AZTNF - Strategic Response / POD_58_Exclude	8,889 acres	AZTNF		Unit
AZTNF - Strategic Response / POD_59_Exclude	948 acres	AZTNF		Unit
AZTNF - Strategic Response / POD_60_Maintain	115,849 acres	AZTNF		Unit
AZTNF - Strategic Response / POD_61_Restore	12,282 acres	AZTNF		Unit
AZTNF - Strategic Response / POD_62_Exclude	1,251 acres	AZTNF		Unit
AZTNF - Strategic Response / POD_64_Exclude	14,090 acres	AZTNF		Unit
AZTNF - Strategic Response / POD_65_Restore	35,021 acres	AZTNF		Unit
AZTNF - Strategic Response / POD_67_Exclude	3,506 acres	AZTNF		Unit
AZTNF - Strategic Response / POD_68_Restore	84,227 acres	AZTNF		Unit
AZTNF - Strategic Response / POD_69_Exclude	34,453 acres	AZTNF		Unit
AZTNF - Strategic Response / POD_70_Exclude	5,000 acres	AZTNF		Unit
AZTNF - Strategic Response / POD_73_HighComplexit	39,581 acres	AZTNF		Unit
AZTNF - Strategic Response / POD_74_Exclude	7,063 acres	AZTNF		Unit
AZTNF - Strategic Response / POD_77_Exclude	4,825 acres	AZTNF		Unit
AZTNF - Strategic Response / POD_80_Exclude	22,268 acres	AZTNF		Unit
AZTNF - Strategic Response / POD_82_Restore	103,219 acres	AZTNF		Unit
AZTNF - Strategic Response / POD_84_Exclude	3,682 acres	AZTNF		Unit
AZTNF - Strategic Response / POD_87_Exclude	23,296 acres	AZTNF		Unit
AZTNF - Strategic Response / POD_89_Exclude	26,215 acres	AZTNF		Unit
AZTNF - Strategic Response / POD_92_Exclude	11,531 acres	AZTNF		Unit
AZTNF - Wildlife / Bald Eagles	24	AZTNF		Unit
AZTNF - Wildlife / Gila Chub	8 acres	AZTNF		Unit
AZTNF - Wildlife / Gila topminnow	8	AZTNF		Unit
AZTNF - Wildlife / Golden Eagle	77 acres	AZTNF		Unit
AZTNF - Wildlife / Owl Cores	1,160 acres	AZTNF		Unit
AZTNF - Wildlife / Owl PACs	6,532 acres	AZTNF		Unit
AZTNF - Wildlife / SWFL	393 acres	AZTNF		Unit
AZTNF - Wildlife / SWFL CH	5,574 acres	AZTNF		Unit
AZTNF - Wildlife / Spikedace CH	40.8 miles	AZTNF		Unit
AZTNF - Wildlife / THEQ	349 acres	AZTNF		Unit
AZTNF - Wildlife / THEQ CH	4,420 acres	AZTNF		Unit
AZTNF - Wildlife / THRU	155 acres	AZTNF		Unit
AZTNF - Wildlife / THsp Observations	6	AZTNF		Unit



Category	Value	Data Source	Currency	Coverage
AZTNF - Wildlife / YBCU	516 acres	AZTNF		Unit
AZTNF - Wildlife / YBCU CH	4,417 acres	AZTNF		Unit
Building Clusters: Gila, AZ	3,413	Various	Various	Available counties
Building Clusters: Maricopa, AZ	84	Various	Various	Available counties
Building Clusters: Yavapai, AZ	0	Various	Various	Available counties
Campgrounds	18	BLM (FAMS) and USFS INFRA	6/01/2018	National (BLM and USFS only)
Class 1 Airsheds	72,248 acres	NPS Air Resources Division	Various	National
Communication Towers	189	HIFLD	02/20/2020	National
County: Gila, AZ	359,625 acres	USFWS ECOS	2/10/2020	National
County: Maricopa, AZ	348,183 acres	USFWS ECOS	2/10/2020	National
County: Yavapai, AZ	18,668 acres	USFWS ECOS	2/10/2020	National
Electric Power Plants	4	HIFLD Open Data (CONUS,PR), HSIP GOLD(AK,HI)	06/09/2017 (CONUS,PR), 2015(AK,HI)	National
Electric Sub Stations	6	HIFLD Open Data (CONUS,PR), HSIP GOLD(AK,HI)	07/24/2017 (CONUS,PR), 2015(AK,HI)	National
Electric Transmission Lines	118.4 miles	HIFLD Open Data (CONUS,PR), HSIP GOLD(AK,HI)	07/24/2017 (CONUS,PR), 2015(AK,HI)	National
Est Ground Evac Time: 1-2 Hrs	217,016 acres	National Park Service NIFC	11/01/2012	CONUS
Est Ground Evac Time: 2-4 Hrs	203,166 acres	National Park Service NIFC	11/01/2012	CONUS
Est Ground Evac Time: 4-6 Hrs	73,995 acres	National Park Service NIFC	11/01/2012	CONUS
Est Ground Evac Time: 6+ Hrs	53,081 acres	National Park Service NIFC	11/01/2012	CONUS
Habitat: Mexican Spotted Owl	155,722 acres	US Fish and Wildlife Service	02/01/2020	National
Habitat: Narrow-Headed Gartersnake	3,200 acres	US Fish and Wildlife Service	02/01/2020	National
Habitat: Northern Mexican Gartersnake	4,424 acres	US Fish and Wildlife Service	02/01/2020	National
Habitat: Southwestern Willow Flycatcher	5,574 acres	US Fish and Wildlife Service	02/01/2020	National
Habitat: Spikedace	40.9 miles	US Fish and Wildlife Service	02/01/2020	National
Habitat: Yellow-Billed Cuckoo	4,418 acres	US Fish and Wildlife Service	02/01/2020	National
IRA: Black Cross Roadless Area	5,966 acres	USFS	03/08/2019	National
IRA: Boulder Roadless Area	40,359 acres	USFS	03/08/2019	National
IRA: Goldfield Roadless Area	8,861 acres	USFS	03/08/2019	National
IRA: Horse Mesa Roadless Area	9,146 acres	USFS	03/08/2019	National
IRA: Mazatzal Roadless Area	1,277 acres	USFS	03/08/2019	National
IRA: Salome Roadless Area	2,932 acres	USFS	03/08/2019	National
Landowner Category: BIA	28 acres	PAD-US 2.0, AICC, BIA/ WFDSS, Census	03/12/2020	National

Category	Value	Data Source	Currency	Coverage
Landowner Category: NPS	550 acres	PAD-US 2.0, AICC, BIA/ WFDSS, Census	03/12/2020	National
Landowner Category: Private	8,636 acres	PAD-US 2.0, AICC, BIA/ WFDSS, Census	03/12/2020	National
Landowner Category: USFS	717,285 acres	PAD-US 2.0, AICC, BIA/ WFDSS, Census	03/12/2020	National
Natl Scenic Byways	33.9 miles	NPS	2/28/2019	National
Natl Scenic Trails	81.7 miles	National Park Service	02/20/2020	National
Other Areas: Bush Highway	479 acres	USGS PADUS 1.4	03/13/2019	National
Other Areas: Three-Bar Watersheds Research Area, Plo 3263	1,738 acres	USGS PADUS 1.4	03/13/2019	National
Other Areas: Usdi Bureau Of Reclamation, Central Arizona Project, Orme Dam	356 acres	USGS PADUS 1.4	03/13/2019	National
Ozone Non-Attainment	348,678 acres	EPA	06/05/2012	National
Roads	164.2 miles	NAVTEQ	11/2012	National
USFS Buildings	136	USFS	2020	National
Wilderness: Four Peaks Wilderness	60,735 acres	Wilderness.net	01/31/19	National
Wilderness: Hellsgate Wilderness	685 acres	Wilderness.net	01/31/19	National
Wilderness: Mazatzal Wilderness	57,974 acres	Wilderness.net	01/31/19	National
Wilderness: Salome Wilderness	4,888 acres	Wilderness.net	01/31/19	National
Wilderness: Superstition Wilderness	14,288 acres	Wilderness.net	01/31/19	National

Coverage of Values Queried that Produced No Results

BLM Buildings (BLM Lands), BLM Horse and Burro (National), BLM Oil / Gas Leases (National), BLM Range Allotments (National), Mines (National), NPS Buildings (National), NRA (National), Natl Historic Trails (National), Natl Recreation Trails (National), Natl Wild Scenic Rivers (National), Oil and Gas Pipelines (National), Particulates Non-Attainment (National), Protecting Unit (AK, CA, ID, MT, NM, MN), Sage Grouse Habitat (National), TNC Lands (National), USFWS Trails (National), WSA (National)

## 1.6. Benefits

### Benefits

---

Last updated by Mary Lata on 06/14/2020 01:36



### Comments

If this fire is stopped before it reaches vegetation types at higher elevations that could benefit from fire, there will be no beneficial effects.

## 1.7. Objectives

### Incident FMU/Strategic Objective Code List

Unit	FMU/Strat Obj Code	Acres
AZTNF	1B - Cave Creek RD Mazatzal Wilderness	28,468
AZTNF	1E - Cave Creed RD Horseshoe and Bartlett Recreation Areas	7,601
AZTNF	1F - Cave Creek RD General Management Area	36,621
AZTNF	3A - Mesa RD Mazatzal Wilderness	8,371
AZTNF	3B - Mesa RD Superstition Wilderness (Eastern Half)	3,203
AZTNF	3C - Mesa RD Superstition Wilderness (Western Half)	5,910
AZTNF	3D - Mesa RD Four Peaks Wilderness	48,470
AZTNF	3E - Mesa RD Bush Highway Research Natural Area	516
AZTNF	3F - Mesa RD Lower Salt River Recreation Area	10,169
AZTNF	3H - Mesa RD Proposed Sycamore Creek and Blue Point Cottonwood Natural Areas	91
AZTNF	3I - Mesa RD General Management Area	180,817
AZTNF	4A - Payson RD Mazatzal Wilderness	11,231
AZTNF	4C - Payson RD Hellsgate Wilderness	607
AZTNF	4F - Payson RD General Management Area	24,082
AZTNF	5B - Pleasant Valley RD Hellsgate Wilderness	80
AZTNF	5D - Pleasant Valley RD Mogollon Rim-Sierra Ancha Area	6,746
AZTNF	5G - Pleasant Valley RD General Management Area	15,658
AZTNF	6A - Tonto Basin RD Mazatzal Wilderness	9,777
AZTNF	6B - Tonto Basin RD Superstition Wilderness	5,156
AZTNF	6C - Tonto Basin RD Three Bar Wildlife Area	22,938
AZTNF	6D - Tonto Basin RD Buckhorn Mountain Research Natural Area	2,803
AZTNF	6E - Tonto Basin RD Haufer Wash Research Natural Area	752
AZTNF	6F - Tonto Basin RD Roosevelt and Apache Lakes Recreation Area	40,096
AZTNF	6H - Tonto Basin RD Salome Wilderness	4,884
AZTNF	6I - Tonto Basin RD Four Peaks Wilderness	10,267
AZTNF	6J - Tonto Basin RD General Management Area	240,283
AZTOP	FMU1	550

### Spatial Fire Planning Inventory

Category	Value	Data Source	Currency	Coverage
Aqua Retardant Avoidance	59,629 acres	USDA FS Enterprise Data Warehouse	05/01/2019	National (USFS Units only)
Mgmt Req: Recreation Sites	21 acres	AZTNF	Current	Unit Level
Mgmt Req: Sonoran Desert	311,204 acres	AZTNF	Current	Unit Level
Retardant Avoidance	17,677 acres	USDA FS Enterprise Data Warehouse	04/2020	National (USFS Units only)

### Incident Objective List

Activated	Incident Objective
06/15/2020	<ul style="list-style-type: none"> <li>Use a risk-based approach to provide for firefighter and emergency responder safety to the Bush wildfire while operating in a COVID-19 environment, being deliberate in committing resources only when there is a reasonable expectation of success in protecting life and critical property and infrastructure as we work towards containment of the fire. Assure that residual risk to first responders is acceptable as we meet the following incident objectives:</li> <li>Closely coordinate with state and county emergency response cooperators and health services to reduce and mitigate risks to public safety from operational and environmental hazards associated with the Bush wildfire and the potential for COVID-19 exposure and transmission to and from the local communities.</li> </ul>



Incident Objective List

Activated	Incident Objective
	<ul style="list-style-type: none"> <li>• The fire will receive full suppression response using all suppression strategies available to meet incident objectives as described in the pertinent WFDSS decision. The use of fire for resource benefit is not expected during this incident.                             <ul style="list-style-type: none"> <li>▪ Minimize fire impacts to residences, commercial properties, critical community infrastructure to reduce the potential for adverse health, social, financial, and economic hardships. These include (but not limited to):</li> <li>▪ Communities: Ft McDowell, Tonto Basin and Punkin Center</li> <li>▪ Highways SR-87, SR-188 and Bush HWY</li> <li>▪ Recreational facilities and areas: Recreation sites along the Bush HWY, Saguaro Lake, Rolls OHV area, 4-Peaks Wilderness, Sugarloaf Recreation area, and Lower Sycamore area.</li> <li>▪ Trails and Trailheads: Arizona Trail and Cottonwood, Cane Spring, Cline, Mud Spring, Lone Pine, Ballantine, Mills Ridge, Rock Creek, and Sycamore Trailheads.</li> <li>▪ Diamond and Dos S Ranch</li> <li>▪ Grazing allotments, permits, and related infrastructure</li> </ul> </li> <li>• Minimize to the extent feasible smoke exposure to firefighters, communities, and other affected areas to reduce susceptibility to and consequences from COVID-19 exposure.</li> <li>• Ensure timely and accurate evacuation, fire, and smoke information is distributed to the public, partners, cooperators, affected outfitters and permittees, and state and local elected officials in order to leverage their capacity and expertise, and serve their functional needs and safety.</li> <li>• Provide mechanisms to actively monitor, address, and rapidly share lessons learned when varying COVID-19 implementation protocols interrupt effective and safe wildland fire suppression operations and/or cause conflicts among firefighters and crews.</li> </ul>

Incident Requirement List

Activated	Incident Requirement
06/15/2020	<ul style="list-style-type: none"> <li>• Commit resources only when there is a reasonable expectation of success in protecting life and critical property and infrastructure, encourage innovation and the use of doctrine for local adaptations.</li> <li>• Implement strategies and tactics that commit responders only to operations where and when they will have a reasonable probability of success and under conditions where important values at risk are protected with the least exposure necessary while maintaining relationships with the people we serve.</li> <li>• In light of the ongoing COVID-19 pandemic you are expected to be familiar with and implement to the best of your ability the guidance described within the "Wildland Fire Response Plan COVID-19 Pandemic" as provided by the Southwest Geographic Area. This guidance which includes a variety of Best Management Practices (BMPs) represents a framework of considerations for use by the IMT, assigned resources and other personnel committed to the incident. Given the fact that your IMT will be among the first to implement many of the recommended BMP's, we expect a significant amount of dialogue in order to implement, monitor and adjust as necessary. It is expected that the IMT fully consider the guidance in its day to day operations and discuss the implementation and deviations with the Agency Administrators during the course of the incident. We will stand ready to engage with you and your team to assist and learn from your assignment. We ask your team provide mechanisms to actively monitor, address, and rapidly share lessons learned when varying COVID-19 implementation protocols interrupt effective and safe wildland fire suppression operations and/or cause conflicts among firefighters and crews.</li> <li>• Notify Agency Administrators as soon as possible any possible COVID-19 exposure and isolations. Your team is to closely coordinate with the State of Arizona and/or County health services to reduce and mitigate risks to public safety from operational and environmental hazards associated with the Fire and the potential for COVID-19 exposure or complications.</li> <li>• We are committed to the aggressive management of risk. Please utilize the doctrinal principles for fire suppression. We expect sound rational judgment in the application of strategies and tactics to accomplish the tasks we have given you. There are no resource or facility values that are worth the cost of human life. We do recognize that there are inherent risks that cannot be eliminated. Your task is to minimize those risks and limit our exposure to them, to include minimizing responder exposure to COVID-19 transmission by utilizing risk management in all facets of fire suppression.</li> <li>• Please ensure that all assigned firefighting personnel receive adequate rest and that guidelines are followed. Ensure that the 10 standard orders are followed and adhered to by every firefighter, and that the 18 watch out situations will be continually evaluated through clear concise direction and understanding of assignments and mitigated as needed.</li> <li>• The Planning Area encompasses Federal lands under the jurisdiction of the Tonto National Forest, Tonto National Monument and the Bureau of Land Management (Phoenix District, Lower Sonoran Field Office) as well as State and Private lands within Maricopa, Pinal and Gila counties.</li> </ul>

Strategic Objective List

Unit	Shape/ FMU	Activated	Strategic Objective
AZTNF	<Unit>	08/17/2013	On all Class E or bigger fires, an Interdisciplinary (ID) team will determine the need for fire rehabilitation and resource protection, including the option for assigning a Burned Area Rehabilitation Team (BAER Team).
AZTNF	1B	05/22/2014	All suppression efforts will emphasize minimum impact strategies. Use of mechanized equipment for fireline construction is discouraged. Where use is necessary, rehabilitation will be implemented.
AZTNF	1B	05/22/2014	All reported wildland fires will receive a strategic fire size-up. Wildland fires meeting locally developed operating guidelines listed below may be managed for resource benefit: <ol style="list-style-type: none"> <li>1. Fire cause is from a natural ignition</li> <li>2. Fire does not threaten life, property, public, and firefighter safety.</li> <li>3. Fire does not threaten fire sensitive cultural resources.</li> <li>4. ADEQ, Air Quality Division procedures and guidelines for consultation and management of smoke will be implemented.</li> <li>5. Wildland Fire managed for resource benefit must meet Tonto, Regional, and National fire situation parameters.</li> <li>6. No site specific resource objective is threatened.</li> </ol>
AZTNF	1E	05/22/2014	All suppression efforts will emphasize minimum impact strategies. Use of mechanized equipment for fireline construction is discouraged. Where use is necessary, rehabilitation will be implemented.
AZTNF	1E	05/22/2014	All reported wildland fires will receive a strategic fire size-up. Wildland fires meeting locally developed operating guidelines listed below may be managed for resource benefit: <ol style="list-style-type: none"> <li>1. Fire cause is from a natural ignition</li> <li>2. Fire does not threaten life, property, public, and firefighter safety.</li> <li>3. Fire does not threaten fire sensitive cultural resources.</li> <li>4. ADEQ, Air Quality Division procedures and guidelines for consultation and management of smoke will be implemented.</li> <li>5. Wildland Fire managed for resource benefit must meet Tonto, Regional, and National fire situation parameters.</li> <li>6. No site specific resource objective is threatened.</li> </ol>
AZTNF	1F	05/22/2014	All suppression efforts will emphasize minimum impact strategies. Use of mechanized equipment for fireline construction is discouraged. Where use is necessary, rehabilitation will be implemented.
AZTNF	1F	05/22/2014	All reported wildland fires will receive a strategic fire size-up. Wildland fires meeting locally developed operating guidelines listed below may be managed for resource benefit: <ol style="list-style-type: none"> <li>1. Fire cause is from a natural ignition</li> <li>2. Fire does not threaten life, property, public, and firefighter safety.</li> <li>3. Fire does not threaten fire sensitive cultural resources.</li> <li>4. ADEQ, Air Quality Division procedures and guidelines for consultation and management of smoke will be implemented.</li> <li>5. Wildland Fire managed for resource benefit must meet Tonto, Regional, and National fire situation parameters.</li> <li>6. No site specific resource objective is threatened.</li> </ol>
AZTNF	3A	08/17/2013	All suppression efforts will emphasize minimum impact strategies. Use of mechanized equipment for fireline construction is discouraged. Where use is necessary, rehabilitation will be implemented.
AZTNF	3A	08/17/2013	All reported wildland fires will receive a strategic fire size-up. Wildland fires meeting locally developed operating guidelines listed below may be managed for resource benefit: <ol style="list-style-type: none"> <li>1. Fire cause is from a natural ignition</li> <li>2. Fire does not threaten life, property, public and firefighter safety.</li> <li>3. Fire does not threaten fire sensitive cultural resources.</li> <li>4. ADEQ, Air Quality Division procedures and guidelines for consultation and management of smoke will be implemented.</li> <li>5. Wildland Fire managed for resource benefit must meet Tonto, Regional, and National fire situation parameters.</li> <li>6. No site specific resource objective is threatened.</li> </ol>
AZTNF	3B	08/17/2013	All suppression efforts will emphasize minimum impact strategies. Use of mechanized equipment for fireline construction is discouraged. Where use is necessary, rehabilitation will be implemented.
AZTNF	3B	08/17/2013	All reported wildland fires will receive a strategic fire size-up. Wildland fires meeting locally developed operating guidelines listed below may be managed for resource benefit: <ol style="list-style-type: none"> <li>1. Fire cause is from a natural ignition</li> <li>2. Fire does not threaten life, property, public and firefighter safety.</li> <li>3. Fire does not threaten fire sensitive cultural resources.</li> <li>4. ADEQ, Air Quality Division procedures and guidelines for consultation and management of smoke will be implemented.</li> </ol>

Strategic Objective List

Unit	Shape/ FMU	Activated	Strategic Objective
			<ol style="list-style-type: none"> <li>5. Wildland Fire managed for resource benefit must meet Tonto, Regional, and National fire situation parameters.</li> <li>6. No site specific resource objective is threatened.</li> </ol>
AZTNF	3C	08/17/2013	All suppression efforts will emphasize minimum impact strategies. Use of mechanized equipment for fireline construction is discouraged. Where use is necessary, rehabilitation will be implemented.
AZTNF	3C	08/17/2013	<p>All reported wildland fires will receive a strategic fire size-up. Wildland fires meeting locally developed operating guidelines listed below may be managed for resource benefit:</p> <ol style="list-style-type: none"> <li>1. Fire cause is from a natural ignition</li> <li>2. Fire does not threaten life, property, public and firefighter safety.</li> <li>3. Fire does not threaten fire sensitive cultural resources.</li> <li>4. ADEQ, Air Quality Division procedures and guidelines for consultation and management of smoke will be implemented.</li> <li>5. Wildland Fire managed for resource benefit must meet Tonto, Regional, and National fire situation parameters.</li> <li>6. No site specific resource objective is threatened.</li> </ol>
AZTNF	3D	08/17/2013	All suppression efforts will emphasize minimum impact strategies. Use of mechanized equipment for fireline construction is discouraged. Where use is necessary, rehabilitation will be implemented.
AZTNF	3D	08/17/2013	<p>All reported wildland fires will receive a strategic fire size-up. Wildland fires meeting locally developed operating guidelines listed below may be managed for resource benefit:</p> <ol style="list-style-type: none"> <li>1. Fire cause is from a natural ignition</li> <li>2. Fire does not threaten life, property, public and firefighter safety.</li> <li>3. Fire does not threaten fire sensitive cultural resources.</li> <li>4. ADEQ, Air Quality Division procedures and guidelines for consultation and management of smoke will be implemented.</li> <li>5. Wildland Fire managed for resource benefit must meet Tonto, Regional, and National fire situation parameters.</li> <li>6. No site specific resource objective is threatened.</li> </ol>
AZTNF	3E	08/17/2013	Suppress all fires while considering costs, firefighter risk, and values at risk
AZTNF	3F	08/17/2013	<p>All reported wildland fires will receive a strategic fire size-up. Wildland fires meeting locally developed operating guidelines listed below may be managed for resource benefit:</p> <ol style="list-style-type: none"> <li>1. Fire cause is from a natural ignition</li> <li>2. Fire does not threaten life, property, public and firefighter safety.</li> <li>3. Fire does not threaten fire sensitive cultural resources.</li> <li>4. ADEQ, Air Quality Division procedures and guidelines for consultation and management of smoke will be implemented.</li> <li>5. Wildland Fire managed for resource benefit must meet Tonto, Regional, and National fire situation parameters.</li> <li>6. No site specific resource objective is threatened.</li> </ol>
AZTNF	3H	08/17/2013	Suppress all fires while considering costs, firefighter risk, and values at risk
AZTNF	3I	08/17/2013	Prevent Wildland Fire from destroying developed recreation improvements, including a five-chain wide buffer surrounding them.
AZTNF	3I	08/17/2013	<p>All reported wildland fires will receive a strategic fire size-up. Wildland fires meeting locally developed operating guidelines listed below may be managed for resource benefit:</p> <ol style="list-style-type: none"> <li>1. Fire cause is from a natural ignition</li> <li>2. Fire does not threaten life, property, public and firefighter safety.</li> <li>3. Fire does not threaten fire sensitive cultural resources.</li> <li>4. ADEQ, Air Quality Division procedures and guidelines for consultation and management of smoke will be implemented.</li> <li>5. Wildland Fire managed for resource benefit must meet Tonto, Regional, and National fire situation parameters.</li> <li>6. No site specific resource objective is threatened.</li> </ol>
AZTNF	4A	05/16/2014	Wildland Fires occurring in these areas will receive an appropriate management response based on previous, current and projected climatological, and existing fuel conditions. Additional considerations for seasonal differences and fire management resources availability will be addressed.
AZTNF	4A	05/16/2014	All suppression efforts will emphasize minimum impact strategies. Use of mechanized equipment for fireline construction is discouraged. Where use is necessary, rehabilitation will be implemented.
AZTNF	4A	05/16/2014	<b>Management Emphasis:</b> Manage for wilderness values, wildlife habitats and natural ecological processes while allowing livestock grazing and recreation opportunities that are compatible with maintaining these values and processes.

Unit	Shape/ FMU	Activated	Strategic Objective
			Wildland Fire will receive an appropriate management response and be managed consistent with Wilderness resource objectives. Naturally occurring fires may be used to play as nearly as possible their natural ecological role and to reduce unnatural fuel hazards as identified in the Forest Service Manual and approved Wilderness Implementation Plan.
AZTNF	4A	05/16/2014	<p><b>All reported wildland fires will receive a strategic fire size-up. Wildland fires meeting locally developed operating guidelines listed below may be managed for resource benefit.</b></p> <ol style="list-style-type: none"> <li>1. Fire cause is from a natural ignition.</li> <li>2. Fire does not threaten life, property, public and firefighter safety.</li> <li>3. Fire does not threaten fire sensitive cultural resources.</li> <li>4. ADEQ, Air Quality Division procedures and guidelines for consultation and management of smoke will be implemented.</li> <li>5. Wildland Fire managed for resource benefit must meet Tonto, Regional, and National fire situation parameters.</li> <li>6. No site specific resource objective is threatened.</li> </ol> <p>For each wildland fire located in an FMU approved for wildland fire use and naturally ignited, a decision criteria checklist will be prepared to determine whether or not it should be declared a Wildland Fire use candidate. If approved, a Wildland Fire Implementation Plan (WFIP) will be prepared that identifies specific resource concerns.</p> <p>Designated Wildland Fires managed for resource benefit will be monitored according to established guidelines.</p> <p>Wildland Fire suppression actions using accepted fire management tactics will be taken if any of the above parameters are not met. Suppression of fires, or portions thereof, will be undertaken where they adversely affect forest resources, endanger public safety and/or have a potential to damage private lands.</p>
AZTNF	4C	05/16/2014	<p>Wildland Fires occurring in these areas will receive an appropriate management response based on previous, current and projected climatological, and existing fuel conditions. Additional considerations for seasonal differences and fire management resources availability will be addressed.</p> <p>All suppression efforts will emphasize minimum impact strategies. Use of mechanized equipment for fireline construction is discouraged. Where use is necessary, rehabilitation will be implemented.</p>
AZTNF	4C	05/16/2014	<p><b>Management Emphasis:</b> Manage for wilderness values, wildlife habitats and natural ecological processes while allowing livestock grazing and recreation opportunities that are compatible with maintaining these values and processes.</p> <p>Wildland Fire will receive an appropriate management response and be managed consistent with Wilderness resource objectives. Naturally occurring fires may be used to play as nearly as possible their natural ecological role and to reduce unnatural fuel hazards as identified in the Forest Service Manual and approved Wilderness Implementation Plan.</p>
AZTNF	4C	05/16/2014	<p><b>All reported wildland fires will receive a strategic fire size-up. Wildland fires meeting locally developed operating guidelines listed below may be managed for resource benefit.</b></p> <ol style="list-style-type: none"> <li>1. Fire cause is from a natural ignition.</li> <li>2. Fire does not threaten life, property, public and firefighter safety.</li> <li>3. Fire does not threaten fire sensitive cultural resources.</li> <li>4. ADEQ, Air Quality Division procedures and guidelines for consultation and management of smoke will be implemented.</li> <li>5. Wildland Fire managed for resource benefit must meet Tonto, Regional, and National fire situation parameters.</li> <li>6. No site specific resource objective is threatened.</li> </ol> <p>For each wildland fire located in an FMU approved for wildland fire use and naturally ignited, a decision criteria checklist will be prepared to determine whether or not it should be declared a Wildland Fire use candidate. If approved, a Wildland Fire Implementation Plan</p>

Unit	Shape/ FMU	Activated	Strategic Objective
AZTNF	4F	05/16/2014	<p><b>(WFIP) will be prepared that identifies specific resource concerns. Designated Wildland Fires managed for resource benefit will be monitored according to established guidelines.</b></p> <p><b>Wildland Fire suppression actions using accepted fire management tactics will be taken if any of the above parameters are not met. Suppression of fires, or portions thereof, will be undertaken where they adversely affect forest resources, endanger public safety and/or have potential to damage private lands.</b></p> <p><b>Management Emphasis:</b> Manage for a variety of renewable natural resources with primary emphasis on wildlife habitat improvement, livestock forage production, and dispersed recreation. Watersheds will be managed so as to improve them to a satisfactory or better condition. Improve and manage the included riparian areas (as defined by FSM 2526) to benefit riparian dependent resources.</p> <p><b>Wildland Fires will be managed consistent with resource objectives. Wildland Fire not meeting management objectives will receive an appropriate suppression response. Fire management objectives for this area include:</b></p> <ul style="list-style-type: none"> <li>• providing a mosaic of age classes within the total type which will provide for a mix of successional stages, and</li> <li>• allow fire to resume its natural ecological role within ecosystems. Wildland Fires or portions thereof will be suppressed when they adversely affect forest resources, endanger public safety, or have a potential to damage significant capital investments.</li> </ul> <p><b>Sonoran Desert and Riparian vegetative types will be protected from fire except where separate burn plans have identified an ecological need.</b></p>
AZTNF	4F	05/16/2014	<p><b>Wildland Fire occurring within the Sonoran Desert and riparian communities will receive an appropriate management response. Suppression strategy is to minimize damage within this ecosystem.</b></p> <p><b>All reported wildland fires will receive a strategic fire size-up. Wildland fires meeting locally developed operating guidelines listed below may be managed for resource benefit.</b></p> <ol style="list-style-type: none"> <li>1. Fire cause is from a natural ignition.</li> <li>2. Fire does not threaten life, property, public and firefighter safety.</li> <li>3. Fire does not threaten fire sensitive cultural resources.</li> <li>4. ADEQ, Air Quality Division procedures and guidelines for consultation and management of smoke will be implemented.</li> <li>5. Wildland Fire managed for resource benefit must meet Tonto, Regional, and National fire situation parameters.</li> <li>6. No site specific resource objective is threatened.</li> </ol> <p><b>For each wildland fire located in an FMU approved for wildland fire use and naturally ignited, a decision criteria checklist will be prepared to determine whether or not it should be declared a Wildland Fire use candidate. If approved, a Wildland Fire Implementation Plan (WFIP) will be prepared that identifies specific resource concerns.</b></p> <p><b>Designated Wildland Fires managed for resource benefit will be monitored according to established guidelines.</b></p> <p><b>Wildland Fire suppression actions using accepted fire management tactics will be taken if any of the above parameters are not met. Suppression of fires, or portions thereof, will be undertaken where they adversely affect forest resources, endanger public safety and/or have a potential to damage private lands.</b></p>
AZTNF	4F	05/16/2014	<p><b>Prevent Wildland Fire</b> from destroying developed recreation improvements, including a five chain wide buffer surrounding them.</p>
AZTNF	5B	05/16/2014	<p>Wildland Fires occurring in these areas will receive an appropriate management response based on previous, current and projected climatological, and existing fuel conditions. Additional considerations for seasonal differences and fire management resources availability will be addressed.</p> <p>All suppression efforts will emphasize minimum impact strategies. Use of mechanized equipment for fireline construction is discouraged. Where use is necessary, rehabilitation will be implemented.</p>
AZTNF	5B	05/16/2014	<p><b>Management Emphasis:</b> Manage for wilderness values, wildlife habitats and natural ecological processes while allowing livestock grazing and recreation opportunities that are compatible with maintaining these values and processes.</p>



Unit	Shape/ FMU	Activated	Strategic Objective
AZTNF	5B	05/16/2014	<p>Wildland Fire will receive an appropriate management response and be managed consistent with Wilderness resource objectives. Naturally occurring fires may be used to play as nearly as possible their natural ecological role and to reduce unnatural fuel hazards as identified in the Forest Service Manual and approved Wilderness Implementation Plan.</p> <p><b>All reported wildland fires will receive a strategic fire size-up. Wildland fires meeting locally developed operating guidelines listed below may be managed for resource benefit.</b></p> <ol style="list-style-type: none"> <li>1. Fire cause is from a natural ignition.</li> <li>2. Fire does not threaten life, property, public and firefighter safety.</li> <li>3. Fire does not threaten fire sensitive cultural resources.</li> <li>4. ADEQ, Air Quality Division procedures and guidelines for consultation and management of smoke will be implemented.</li> <li>5. Wildland Fire managed for resource benefit must meet Tonto, Regional, and National fire situation parameters.</li> <li>6. No site specific resource objective is threatened.</li> </ol> <p>For each wildland fire located in an FMU approved for wildland fire use and naturally ignited, a decision criteria checklist will be prepared to determine whether or not it should be declared a Wildland Fire use candidate. If approved, a Wildland Fire Implementation Plan (WFIP) will be prepared that identifies specific resource concerns. Designated Wildland Fires managed for resource benefit will be monitored according to established guidelines.</p> <p>Wildland Fire suppression actions using accepted fire management tactics will be taken if any of the above parameters are not met. Suppression of fires, or portions thereof, will be undertaken where they adversely affect forest resources, endanger public safety and/or have a potential to damage private lands.</p>
AZTNF	5D	05/16/2014	<p><b>Management Emphasis:</b> Manage for a variety of renewable resource outputs with primary emphasis on intensive, sustained yield timber management, timber resource protection, creation of wildlife habitat diversity, increased populations of emphasis harvest species, and recreation opportunity. Timber harvesting methods and timing will include improvement of wildlife habitat quality and watershed condition, and will consider impacts on intensive range and recreation management. Mining activities are authorized in conformance with existing laws and regulations. Visual quality protection will be emphasized in the area (analysis area 5542) of the Highline Trail, a National Recreation Trail.</p> <p><b>Wildland Fires will be managed consistent with resource objectives. Wildland Fires will be managed with an appropriate suppression response. Fire management objectives for this area include:</b></p> <ul style="list-style-type: none"> <li>• providing a mosaic of age classes within the total type which will provide for a mix of successional stages, and</li> <li>• allow fire to resume its natural ecological role within ecosystems. Wildland Fires or portions thereof, will be suppressed when they adversely affect forest resources, endanger public safety, or have a potential to damage significant capital investments.</li> </ul>
AZTNF	5D	05/16/2014	<p><b>All reported wildland fires will receive a strategic fire size-up. Wildland fires meeting locally developed operating guidelines listed below may be managed for resource benefit.</b></p> <ol style="list-style-type: none"> <li>1. Fire cause is from a natural ignition.</li> <li>2. Fire does not threaten life, property, public and firefighter safety.</li> <li>3. Fire does not threaten fire sensitive cultural resources.</li> <li>4. ADEQ, Air Quality Division procedures and guidelines for consultation and management of smoke will be implemented.</li> <li>5. Wildland Fire managed for resource benefit must meet Tonto, Regional, and National fire situation parameters.</li> <li>6. No site specific resource objective is threatened.</li> </ol> <p>For each wildland fire located in an FMU approved for wildland fire use and naturally ignited, a decision criteria checklist will be prepared to determine whether or not it should be declared a Wildland Fire use candidate. If approved, a Wildland Fire Implementation Plan (WFIP) will be prepared that identifies specific resource concerns. Designated Wildland Fires managed for resource benefit will be monitored according to established guidelines.</p> <p>Wildland Fire suppression actions using accepted fire management tactics will be taken if any of the above parameters are not met. Suppression of fires, or portions thereof, will be undertaken where they adversely affect forest resources, endanger public safety and/or</p>

Unit	Shape/ FMU	Activated	Strategic Objective
			<b>have a potential to damage private lands.</b>
AZTNF	5D	05/16/2014	<b>Prevent Wildland Fire</b> from destroying developed recreation improvements.
AZTNF	5G	05/16/2014	<p><b>Management Emphasis:</b> Manage for a variety of renewable natural resources with primary emphasis on wildlife habitat improvement, livestock forage production, and dispersed recreation. Watersheds will be managed so as to improve them to a satisfactory or better condition. Improve and manage the included riparian areas (as defined by FSM 2526) to benefit riparian dependent resources.</p> <p><b>Wildland Fires will be managed consistent with resource objectives. Wildland Fire will be managed with an appropriate suppression response. Fire management objectives for this area include:</b></p> <ul style="list-style-type: none"> <li>• providing a mosaic of age classes within the total type which would provide for a mix of successional stages, and</li> <li>• allow fire to resume its natural ecological role within ecosystems. Wildland Fires or portions thereof, will be suppressed when they adversely affect forest resources, endanger public safety or have a potential to damage capital investments.</li> </ul>
AZTNF	5G	05/16/2014	<p><b>All reported wildland fires will receive a strategic fire size-up. Wildland fires meeting locally developed operating guidelines listed below may be managed for resource benefit.</b></p> <ol style="list-style-type: none"> <li>1. Fire cause is from a natural ignition.</li> <li>2. Fire does not threaten life, property, public and firefighter safety.</li> <li>3. Fire does not threaten fire sensitive cultural resources.</li> <li>4. ADEQ, Air Quality Division procedures and guidelines for consultation and management of smoke will be implemented.</li> <li>5. Wildland Fire managed for resource benefit must meet Tonto, Regional, and National fire situation parameters.</li> <li>6. No site specific resource objective is threatened.</li> </ol> <p><b>For each wildland fire located in an FMU approved for wildland fire use and naturally ignited, a decision criteria checklist will be prepared to determine whether or not it should be declared a Wildland Fire use candidate. If approved, a Wildland Fire Implementation Plan (WFIP) will be prepared that identifies specific resource concerns. Designated Wildland Fires managed for resource benefit will be monitored according to established guidelines.</b></p> <p><b>Wildland Fire suppression actions using accepted fire management tactics will be taken if any of the above parameters are not met. Suppression of fires, or portions thereof, will be undertaken where they adversely affect forest resources, endanger public safety and/or have a potential to damage private lands.</b></p>
AZTNF	6F	09/05/2013	Resource benefit optional - management of fire for resource benefits can be considered
AZTNF	6F	09/05/2013	<b>For each wildland fire located in an FMU approved for wildland fire use and naturally ignited, a decision criteria checklist will be prepared to determine whether or not it should be declared a Wildland Fire use candidate.</b>
AZTNF	6F	09/05/2013	<p><b>All reported wildland fires will receive a strategic fire size-up. Wildland fires meeting locally developed operating guidelines listed below may be managed for resource benefit:</b></p> <ol style="list-style-type: none"> <li>1. Fire cause is from a natural ignition</li> <li>2. Fire does not threaten life, property, public and firefighter safety.</li> <li>3. Fire does not threaten fire sensitive cultural resources.</li> <li>4. ADEQ, Air Quality Division procedures and guidelines for consultation and management of smoke will be implemented.</li> <li>5. Wildland Fire managed for resource benefit must meet Tonto, Regional, and National fire situation parameters.</li> <li>6. No site specific resource objective is threatened.</li> </ol>
AZTNF	6F	09/05/2013	<b>Designated Wildland Fires managed for resource benefit will be monitored according to established guidelines.</b>
AZTNF	6F	09/05/2013	<b>Suppression of fires, or portions thereof, will be undertaken where they adversely affect forest resources, endanger public safety and/or have a potential to damage private lands</b>
AZTNF	6J	09/05/2013	<b>All reported wildland fires will receive a strategic fire size-up. Wildland fires meeting locally developed operating guidelines listed below may be managed for resource benefit:</b>

Strategic Objective List

Unit	Shape/FMU	Activated	Strategic Objective
			<ol style="list-style-type: none"> <li>1. Fire cause is from a natural ignition</li> <li>2. Fire does not threaten life, property, public and firefighter safety.</li> <li>3. Fire does not threaten fire sensitive cultural resources.</li> <li>4. ADEQ, Air Quality Division procedures and guidelines for consultation and management of smoke will be implemented.</li> <li>5. Wildland Fire managed for resource benefit must meet Tonto, Regional, and National fire situation parameters.</li> <li>6. No site specific resource objective is threatened.</li> </ol>
AZTNF	6J	09/05/2013	Designated Wildland Fires managed for resource benefit will be monitored according to established guidelines.
AZTNF	6J	09/05/2013	For each wildland fire located in an FMU approved for wildland fire use and naturally ignited, a decision criteria checklist will be prepared to determine whether or not it should be declared a Wildland Fire use candidate.
AZTNF	6J	09/05/2013	Suppression of fires, or portions thereof, will be undertaken where they adversely affect forest resources, endanger public safety and/or have a potential to damage private lands
AZTOP	<Unit>	05/27/2020	Provide for public, employee and firefighter safety

Management Requirement List

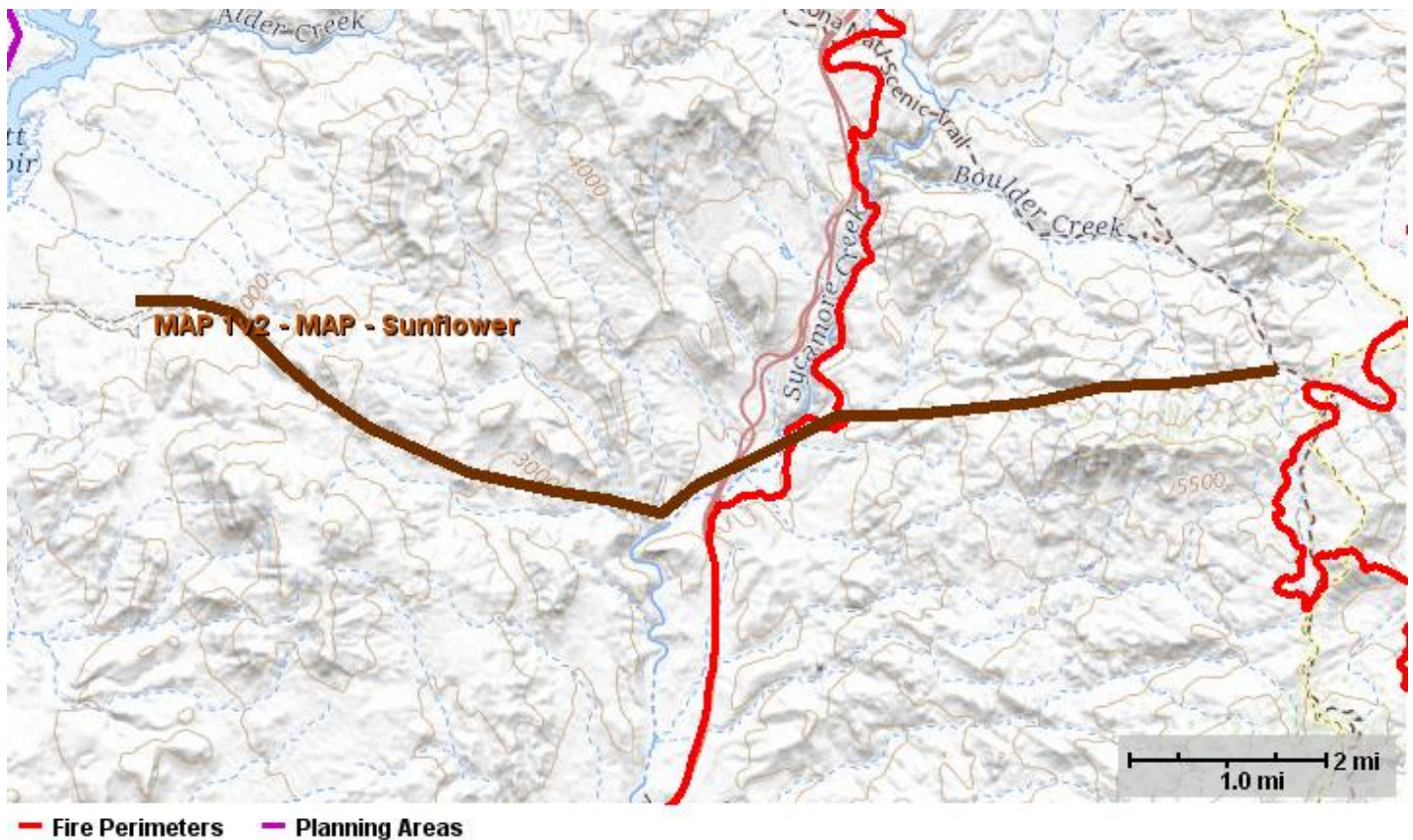
Unit	Shape/FMU	Activated	Management Requirement
	Aqua Retardant Avoidance	06/18/2013	The aerial application of fire retardant is allowed for fighting fires. Aerially delivered fire retardant should not be applied to any mapped aquatic avoidance area, waterway or buffer. The only exception to using aerially applied fire retardant in avoidance areas is <b>for the protection of human life or public safety</b> . The Incident Commander is the decision maker. Information concerning the Record of Decision for the Aerial Application of Fire Retardant is available at <a href="https://www.fs.fed.us/fire/retardant/index.html">https://www.fs.fed.us/fire/retardant/index.html</a>
	Retardant Avoidance	05/31/2012	The aerial application of fire retardant is allowed for fighting fires. Aerially delivered fire retardant should not be applied to any mapped terrestrial avoidance area, waterway or buffer. The only exception to using aerially applied fire retardant in avoidance areas is <b>for the protection of human life or public safety</b> . The Incident Commander is the decision maker. Information concerning the Record of Decision for the Aerial Application of Fire Retardant is available at <a href="https://www.fs.fed.us/fire/retardant/index.html">https://www.fs.fed.us/fire/retardant/index.html</a>
AZTNF	<Unit>	08/17/2013	Management activities will be planned so that air quality will equal to or better than that required by applicable Federal, State, and local standards or regulations.
AZTNF	<Unit>	09/05/2013	Wildland Fires threatening the Wildland/Urban Interface will have high suppression priority
AZTNF	Recreation Sites	09/05/2013	Prevent Wildland Fire from destroying developed recreation improvements, including a five-chain wide buffer surrounding them.
AZTNF	Sonoran Desert	09/05/2013	Wildland Fire occurring within the Sonoran Desert and riparian communities will receive an appropriate management response. Suppression strategy is to minimize damage within this ecosystem.
AZTOP	<Unit>	05/27/2020	<p><b>COVID-19</b></p> <ul style="list-style-type: none"> <li>• Refer to the "Southwest Wildland Fire Response Plan COVID-19 (SW WFRP)" for guidance and considerations in maintaining continuity of operations in the presence of the COVID-19 pandemic.</li> <li>• Coordinate with Agency, State, County, and Municipal Public Health offices as necessary to ensure firefighter and public health.</li> </ul>
AZTOP	<Unit>	05/27/2020	Contain wildfires at smallest size consistent with firefighter and public safety using the appropriate suppression response
AZTOP	<Unit>	05/27/2020	Protect natural and cultural resources from fire and suppression damage
AZTOP	<Unit>	05/27/2020	Protect park and adjacent infrastructure from fire and suppression damage
AZTOP	<Unit>	05/27/2020	Provide structure protection and defensible space utilizing Fire-Wise standards

## 1.8. Course of Action

### Course of Action

Active	Inactive	Action Item
06/15/2020		<ul style="list-style-type: none"> <li>• Firefighter and public safety remains priority over all other incident objectives and requirements. Include appropriate COVID 19 mitigation measures for firefighters, overhead team staff and others to minimize health impacts.</li> <li>• Make reasonable, prudent and timely risk-based decisions to accomplish specific fire suppression, monitoring and/or other management actions while minimizing exposure to hazards. Specific hazards to be aware of on this incident include steep terrain, flammable fuels, extreme air temperatures, extended burn periods, and low RH values during the burning period.</li> <li>• Consider smoke impacts to the public, natural/cultural resources and infrastructure values as well as to social and economic values when developing strategic planning efforts and the opportunities to mitigate the smoke impacts.</li> <li>• Maintain timely communications with all agencies, cooperators and landowners. Coordinate closures (roads, trails, recreation areas) and evacuations with the appropriate officials and communicate those closures/evacuations in a timely fashion with the public and stakeholders.</li> </ul>

### Management Action Point 1v2



NAME	VALUE
Incident Name	Bush
Cost	\$250,000
Shape	MAP - Sunflower
Activated	06/18/2020
Deactivated	
Status	Active

### Condition

**MAP Description:** The location of this MAP is along Log Corral Canyon from the west to east until it meets SR-87 and then continues along the FS104 north of boulder mountain where it connects with FS422.

**Intent:** If fire becomes established west of SR87 or threatens this MAP. Notify the Power company (APS), landowners on the private land adjacent to Forest. The intent of this MAP is to protect APS powerlines and pre-evac notifications for Sunflower Estates, Diamond



Ranch and Cross F Ranch.

**Values at Risk:**

**Probability:** 80-100% Very High (Determined from FS PRO)

- APS - KV Powerlines
- Private structures (Sunflower, Jake's Corner)
- Ord Lookout and Communications site
- Ord mountain private inholdings
- Cultural resources
- T&E Species
- Forest Service infrastructure

**Actions**

**Notifications:**

**Recommended Management Action:**

- Forest Agency Administrators and Fire Managers
- DPS
- APS
- Gila and Maricopa Counties
- Sunflower Estates
- Diamond Ranch
- Cross F Ranch
- Mt. Ord Communication Site User Associations
- Consider pre-evac notifications or evacuations of private lands and ranches to the North of the fire (dependent on fire Fire weather and behavior in conjunction with suppression efforts).
- Consider prepping powerlines with APS.
- Consider prepping and planning for burnout operations around Mt. Ord Communication sites.
- Evaluate current planning area and IMT organization

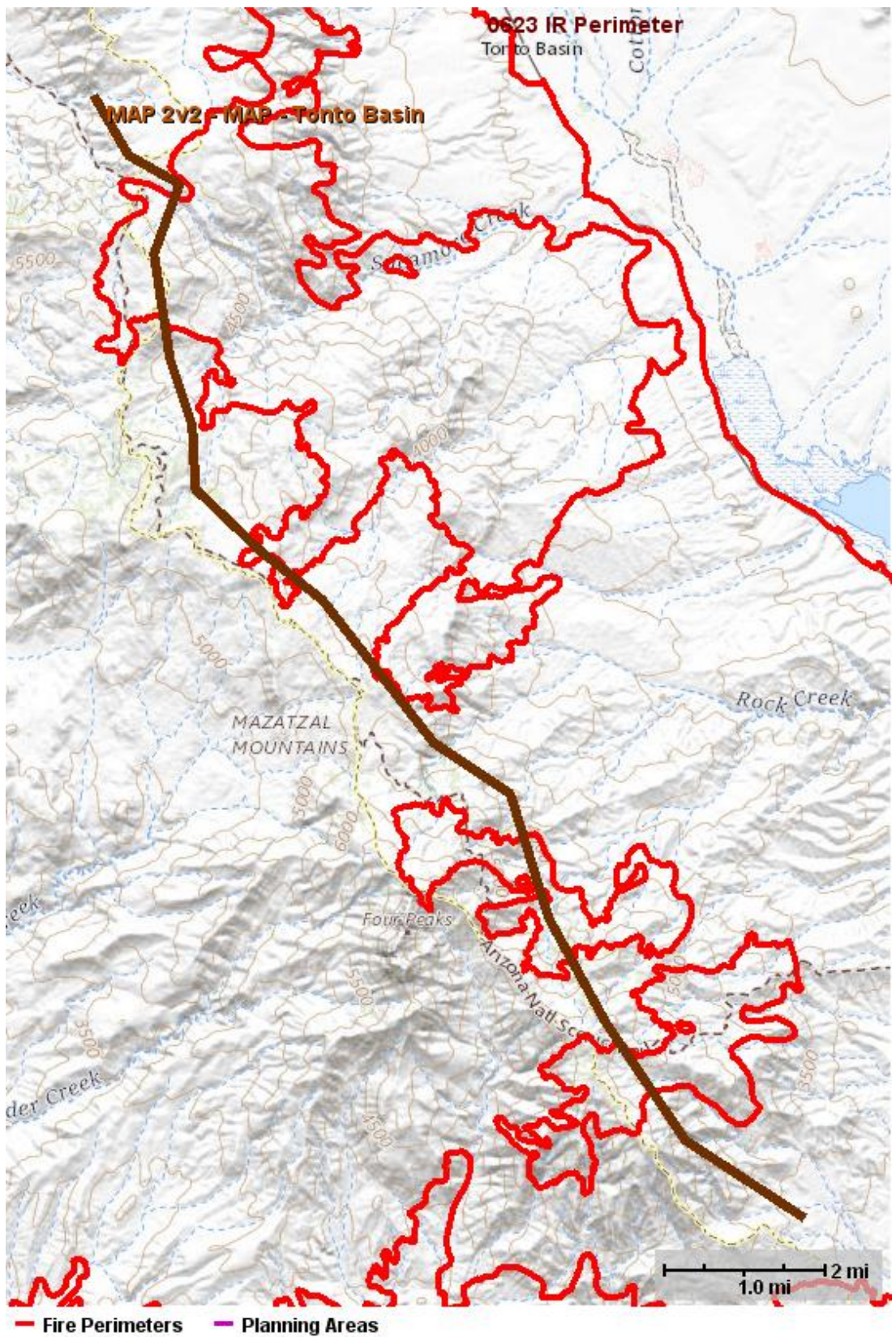
**Resources**

**Recommended:**

- Consider ordering more resources (Engines, Handcrews, Equipment and Aviation)



**Management Action Point 2v2**



NAME	VALUE
Incident Name	Bush
Cost	\$800,000
Shape	MAP - Tonto Basin
Activated	06/18/2020

Deactivated  
Status            Active

---

## Condition

**MAP Description:** The location of this MAP is north of Edwards Peak moving south on the east side of FS422 continuing all the way to Apache Lake.

**Intent:** If fire becomes established east of FS422 or threatens this MAP. Consider pre-evac and evacuation notices for Tonto Basin area and Punkin Center.

**Values at Risk:**

**Probability:** 80-100% Very High (Determined from FS PRO)

- Tonto Basin and Punkin Center communities
- Private structures
- Communications sites
- Cultural resources
- T&E Species
- Forest Service infrastructure

## Actions

**Notifications:**

**Recommended Management Action:**

- Forest Agency Administrators and Fire Managers
- DPS and APS
- Gila County Sherriff
- Maricopa County Sherriff for Apache Lake and SR88
- Arizona Department of Transportation
- Apache Lake Marina (If threatening Apache Lake.
- Consider pre-evac notifications or evacuations of Tonto Basin, Punkin Center communities and surrounding areas (dependent on Fire weather and behavior in conjunction with suppression efforts).
- Consider indirect attack and aviation suppression options to reduce fire impacts into Tonto Basin
- Evaluate current planning area and IMT organization

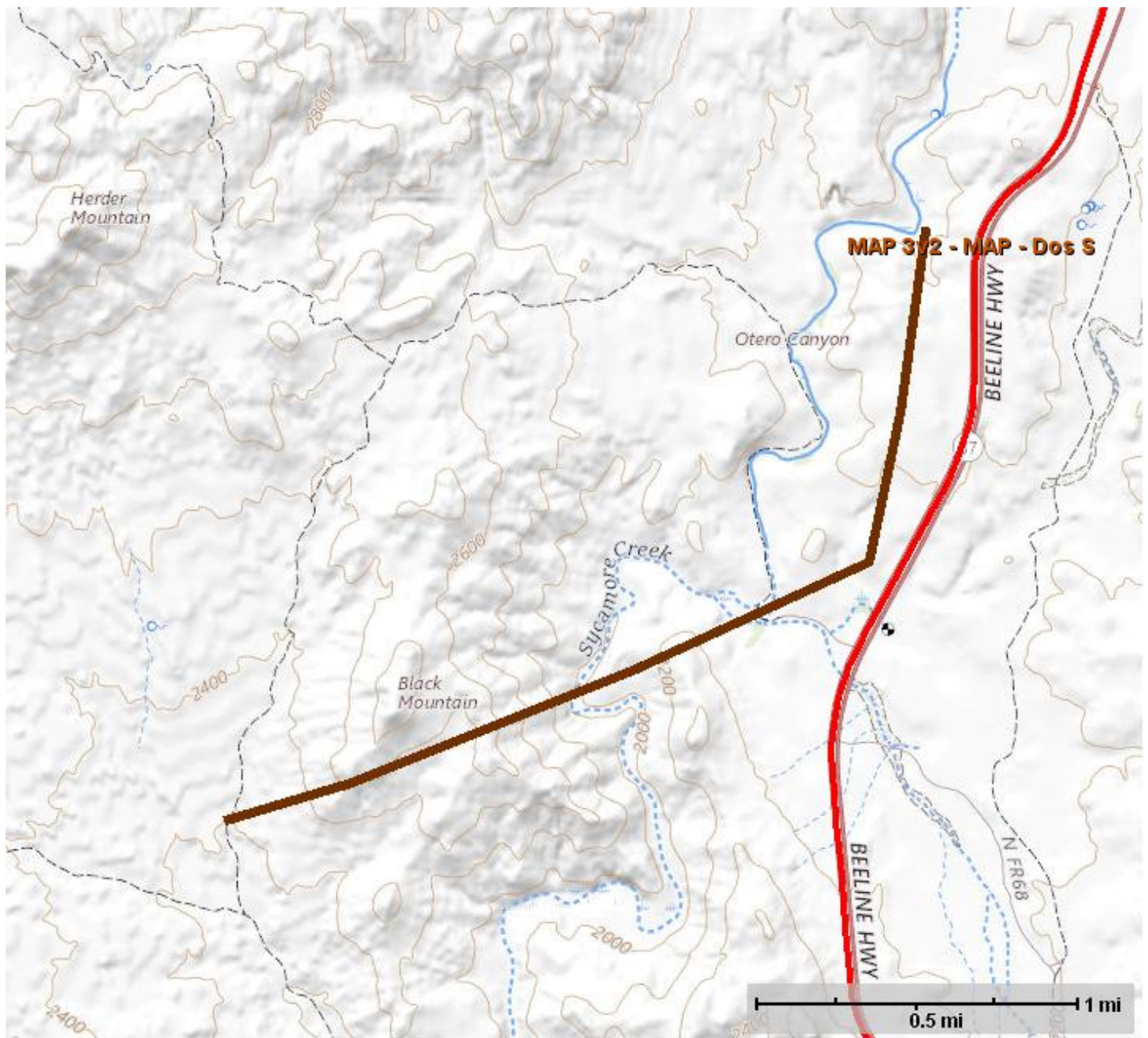
## Resources

**Recommended:**

- Consider ordering more resources (Engines, Handcrews, Equipment and Aviation)



## Management Action Point 3v2



— Fire Perimeters — Planning Areas

NAME	VALUE
Incident Name	Bush
Cost	\$100,000
Shape	MAP - Dos S
Activated	06/18/2020
Deactivated	
Status	Active

### Condition

**MAP Description:** The location of this MAP is south of the Dos S ranch on the West side of SR87 moving west to Black Mountain.

**Intent:** If fire becomes established west of FS87 or threatens this MAP south of the Dos S ranch. Consider evacuation of Dos S ranch.

**Values at Risk:**

**Probability:** 80-100% Very High (Determined from FS PRO)

- Dos S ranch
- Private structures
- Cultural resources

## Actions

**Notifications:**

**Recommended Management Action:**

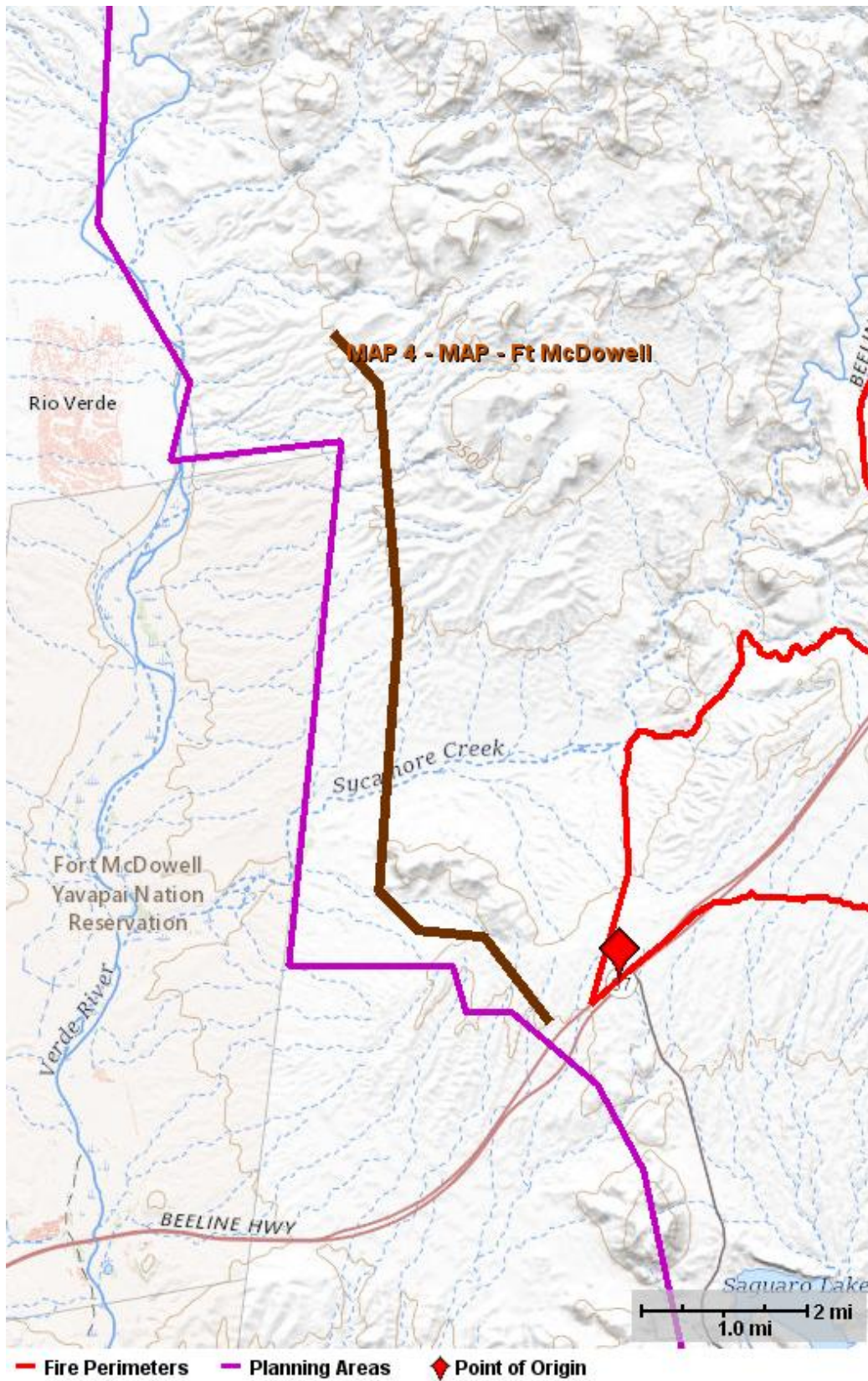
- Forest Agency Administrators and Fire Managers
- Notifying DPS
- Dos S Ranch
- Notify and consider evacuations for Dos S ranch.
- Consider indirect attack and aviation suppression in areas that would slow or stop fire and allow ground crews to suppress.
- Evaluate current planning area and IMT organization.

## Resources

**Recommended:**

- Consider ordering more resources (Engines, Handcrews, Equipment and Aviation)

**Management Action Point 4**



NAME	VALUE
Incident Name	Bush
Cost	\$100,000
Shape	MAP - Ft McDowell



Activated 06/15/2020  
Deactivated  
Status Active

### Condition

**MAP Description:** The location of this MAP is west of the fire traveling north to south just east of the Ft. McDowell Yavapai Nation.

**Intent:** If fire crosses or threatens the MAP, notify Ft. McDowell Agency Administrators and Fire Managers.

**Values at Risk:**

**Probability:** .2-4.9% Very Low (Determined from FS PRO)

- Communities of Ft. McDowell, Fountain Hills and other private inholdings

### Actions

**Notifications:**

**Recommended Management Action:**

- Forest Agency Administrators and Fire Managers
- McDowell (BIA) Agency Administrators and Fire Managers
- Notifying DPS
- Private lands and communities
- Consider pre-evac notifications Private inholdings along SR87, Ft McDowell and surrounding areas near Fountain Hills. (dependent on fire Fire weather and behavior in conjunction with suppression efforts).
- Consider indirect attack options to reduce fire impacts to the Verde River and riparian areas.
- Evaluate current planning area and IMT organization

### Resources

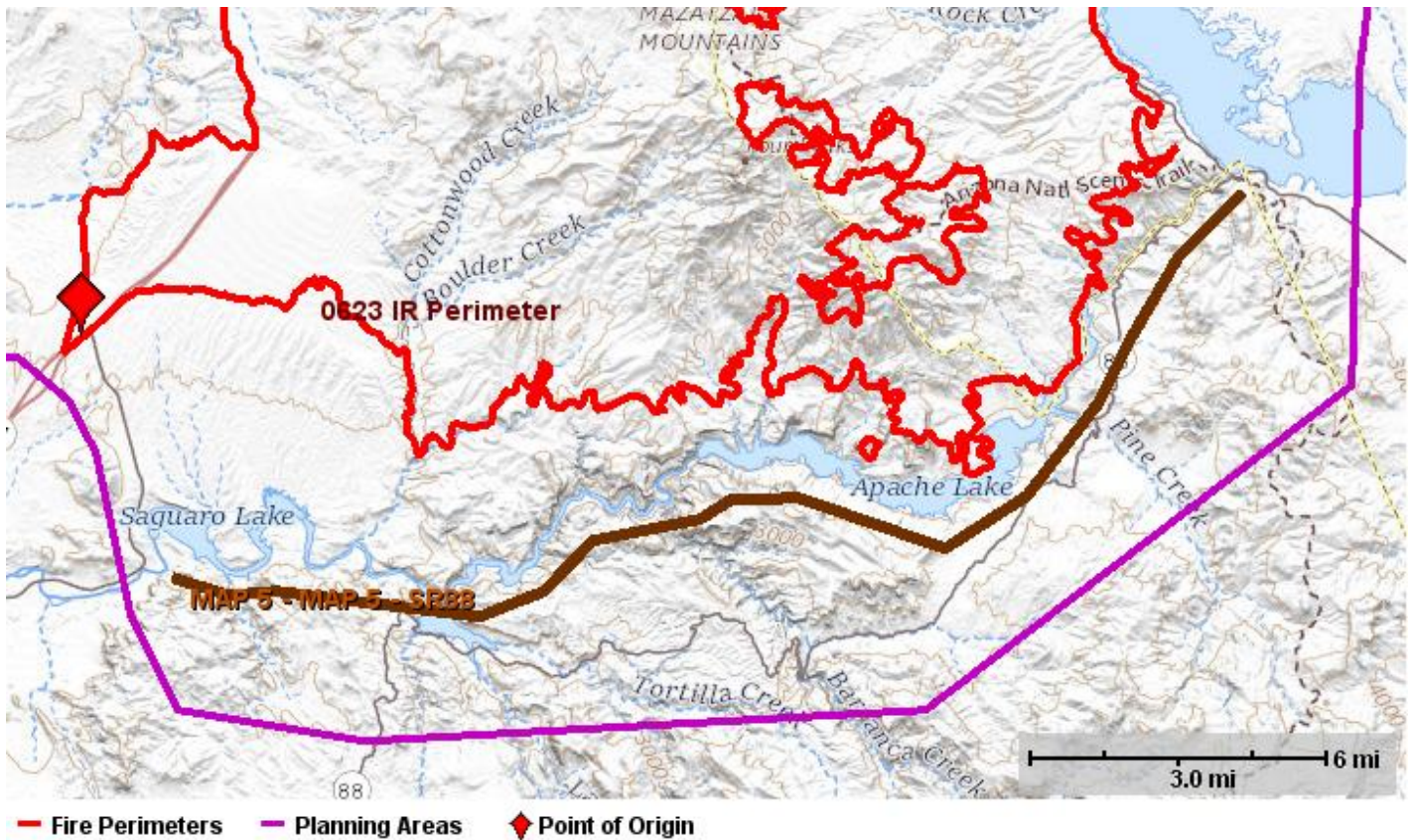
**Recommended:**

- Consider ordering more resources (Engines, Handcrews, Equipment and Aviation)

#### Annotations

Time (CDT)	User	Note
06/18/2020 12:19	Taylor, CorDell	FSPRO was based off the initial runs from IA and extended attack.

## Management Action Point 5



NAME	VALUE
Incident Name	Bush
Cost	\$500,000
Shape	MAP 5 - SR88
Activated	06/18/2020
Deactivated	
Status	Active

### Condition

**MAP Description:** This MAP is located south of Saguaro Lake and travels west to east from the Salt River near Bush Highway to SR188 cutting across Canyon Lake and then stays south of the Salt River and Apache Lake until it reaches Theodore Roosevelt Lake to the east.

**Intent:** If fire crosses or threatens the MAP, consider closure of SR88 and spur roads that access the Salt River corridor. Multiple recreational sites and marina's at Saguaro, Canyon and Apache Lake.

#### Values at Risk:

**Probability:** 80-100% Very High (Determined from FS PRO) and .2-80% on the ends of the MAP as the likelihood of spotting is low

- Numerous facilities and recreational sites along SR88
- Highway Dept. facilities
- Roosevelt estates
- Roosevelt Lake View trailer park
- Cross P Ranch
- SRP KV Powerlines
- SRP substation
- FS Roosevelt Visitor Center and Work Center
- SRP lands (wood poles)
- Roosevelt Marina store
- Blackbrush HQ Ranch
- Tonto National Monument
- Recreational Users on the Forest (This is a large area with lots of roads and not many ways in or out.)
- Livestock
- T&E (Southwestern Willow Flycatcher, Garter Snakes and Fish)
- Sonoran Desert

- Structural Range Improvements
- Watershed and future flooding issues
- Superstition Wilderness Area

## **Actions**

### **Notifications:**

#### **Recommended Management Action:**

- Forest Agency Administrators and Fire Managers
- DPS (ADOT) & APS
- Gila and Maricopa County Sherriff's
- State of Arizona Dept of Forestry and Fire
- Recreational sites along SR88
- Private residents and ranches
- National Park Service Agency Administrators
- Consider closure of SR88
- Consider closures of recreational sites and facilities along SR88 and the Salt River, Apache, Canyon and Saguaro Lakes
- Consider pre-evac notifications Private inholdings along SR188 south of Theodore Roosevelt Lake Dam (dependent on fire weather and behavior in conjunction with suppression efforts).
- Consider indirect attack options to reduce fire impacts to the Salt River and riparian areas.
- Consider expanding the existing closure area of the Bush fire.

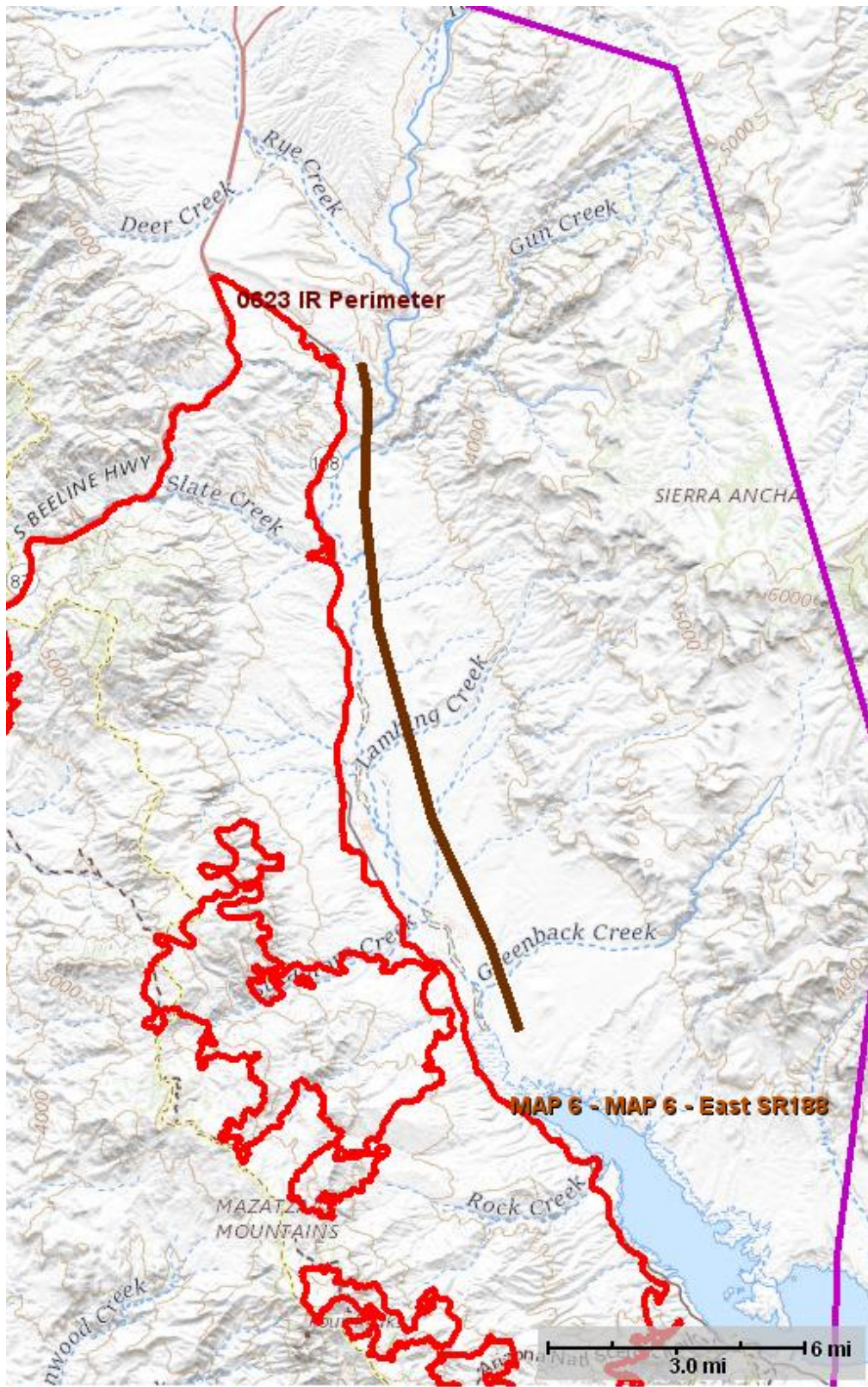
## **Resources**

### **Recommended:**

- Consider Branching existing organization
- Consider ordering more resources (Engines, Handcrews, Equipment and Aviation)
- Consider ordering more Law Enforcement and road guards



**Management Action Point 6**



— Fire Perimeters — Planning Areas

NAME	VALUE
Incident Name	Bush
Cost	
Shape	MAP 6 - East SR188
Activated	06/18/2020



Deactivated  
Status            Active

---

## Condition

**MAP Description:** This MAP is located on the east side of SR188 and travels from Jakes Corner south to Theodore Roosevelt Lake.

**Intent:** If fire crosses or threatens the MAP, consider evacuations of private inholdings and communities east of SR188

**Values at Risk:**

**Probability:** (Determined from FS PRO)

- Bouquet Ranch
- Lower Greenback Creek properties.
- Greenback Valley Inholdings
- Browns, Payson Concrete, Forest Gresley, Troy Neal, James Weidenbener (DelShay Ranch), Jakes Corner,
- Properties along Rye Creek
- Deer Creek
- Transfer Station and power lines
- Town of Gisela
- Recreational Users on the Forest (This is a large area with lots of roads and not many ways in or out.)
- Livestock
- T&E (Southwestern Willow Flycatcher, Garter Snakes and Fish)
- Sonoran Desert
- Structural Range Improvements
- Watershed and future flooding issues

## Actions

**Notifications:**

**Recommended Management Action:**

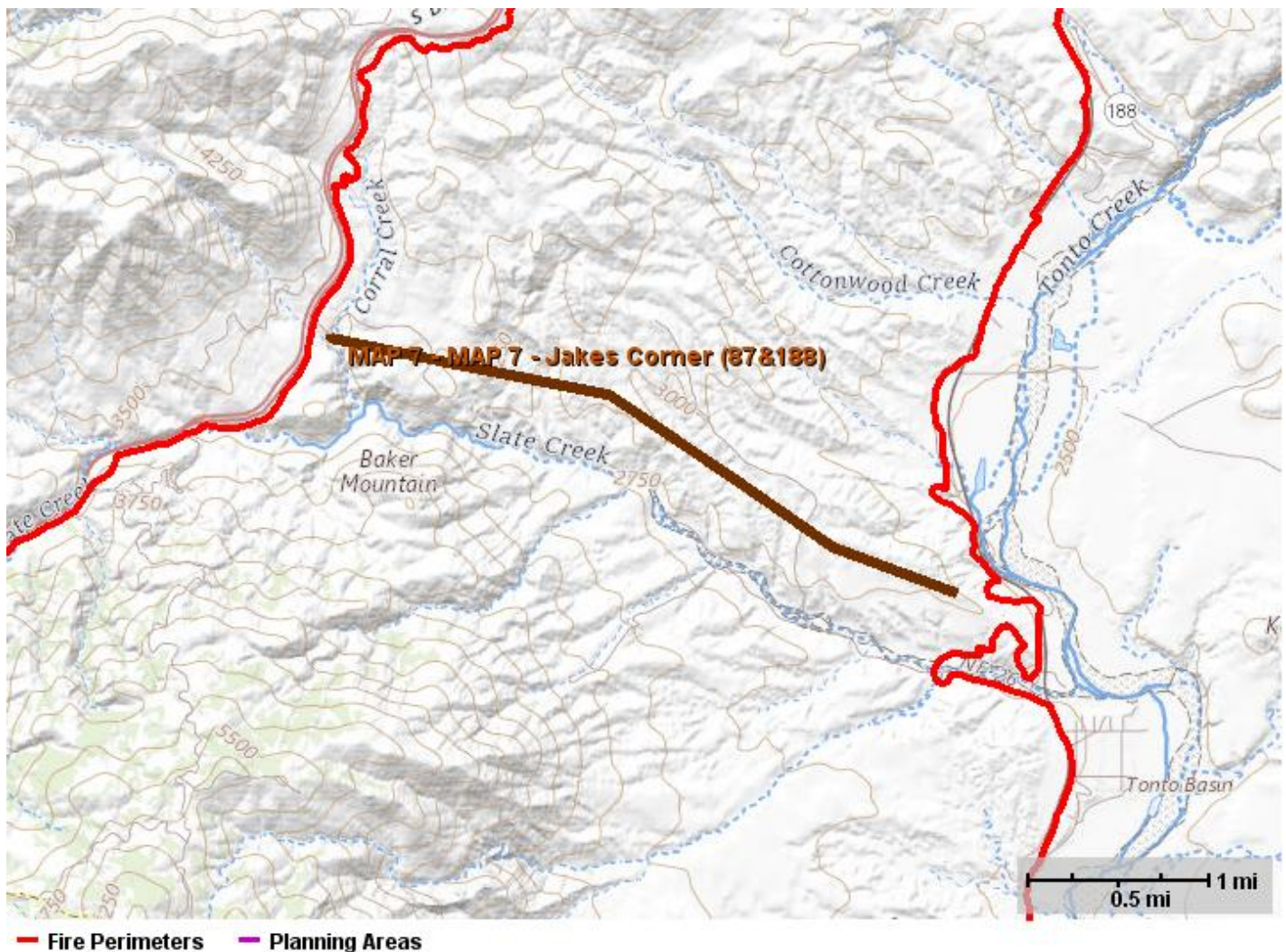
- Forest Agency Administrators and Fire Managers
- DPS (ADOT) & APS
- Gila County Sherriff and Emergency Manager
- State of Arizona Forestry and Fire
- Private residents and ranches
- Consider pre-evac notification and evacuation of communities **east** of the towns; Tonto Basin and Punkin Center (many are listed in the VAR bullets).
- Consider point protection, direct and indirect strategies to suppress fire.
- Consider developing more MAPs for SR288 and communities surrounding Pleasant Valley.
- Consider expanding the existing area closure of the Bush fire.

## Resources

**Recommended:**

- Consider ordering more resources (Engines, Handcrews, Equipment and Aviation)
- Consider ordering more Law Enforcement and road guards

## Management Action Point 7



NAME	VALUE
Incident Name	Bush
Cost	\$50,000
Shape	MAP 7 - Jakes Corner (87&188)
Activated	06/18/2020
Deactivated	
Status	Active

### Condition

**MAP Description:** This MAP is located north of Slate Creek traveling east and west between SR87 and SR188.

**Intent:** If fire crosses or threatens the MAP, consider initiating strategies and tactics to suppress fire and reduce the impact to the community of Jake's Corner.

#### Values at Risk:

**Probability:** 80-100% Very High (Determined from FS PRO)

- APS - KV power lines
- Jake's Corner private structures
- Deer Creek and ranches north of the SR87 and SR188 junction

### Actions

#### Notifications:

#### Recommended Management Action:

- Forest Agency Administrators and Fire Managers (include Payson RD)
- DPS (ADOT) & APS
- Gila County Sherriff and Emergency Manager

- State of Arizona Dept of Forestry and Fire
- Consider evacuating the community Jake's Corner
- Consider point protection, direct and indirect strategies to suppress fire.
- Consider evacuations of communities and private inholdings north of SR188 and SR87 junction (including but not limited to Deer Creek, Bar T Bar Ranch, Rye, Browns Ranch, Seventy-Six Ranch, Gisela and Oxbow Estates).

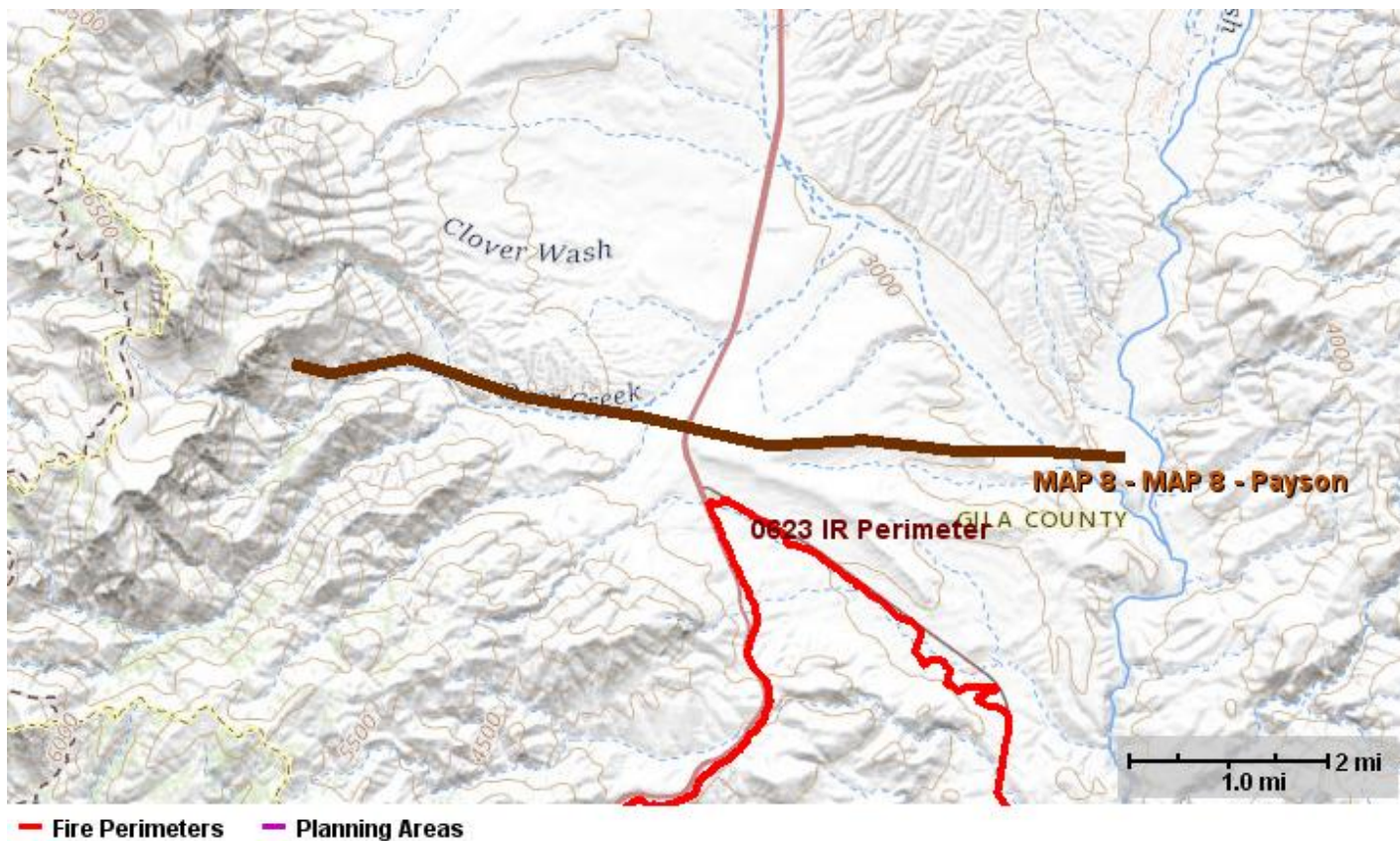
## **Resources**

### **Recommended:**

- Consider ordering more resources (Engines, Handcrews, Equipment and Aviation)
- Consider ordering more Law Enforcement and road guards



## Management Action Point 8



NAME	VALUE
Incident Name	Bush
Cost	\$500,000
Shape	MAP 8 - Payson
Activated	06/18/2020
Deactivated	
Status	Active

### Condition

**MAP Description:** This MAP is located north of the SR87 and SR188 junction running west from Deer Creek across SR87 to the east ties into Tonto Creek.

**Intent:** If fire crosses or threatens the MAP, consider putting the town of Payson and surrounding communities on pre-evac notice.

**Values at Risk:**

**Probability:** < 0.2%-4.9% Very Low (Determined from FS PRO)  
 With the potential of spotting with heavier fuels and grass loading the probability is higher

- Deer Creek
- Browns Ranch
- Bar T Bar Ranch
- Rye
- Gisela
- Seventy-Six Ranch
- Oxbow estates
- Communities surrounding Payson
- T&E species
- Sonoran Desert
- Livestock
- Structural Range Improvements
- Watershed and future flooding issues

### Actions



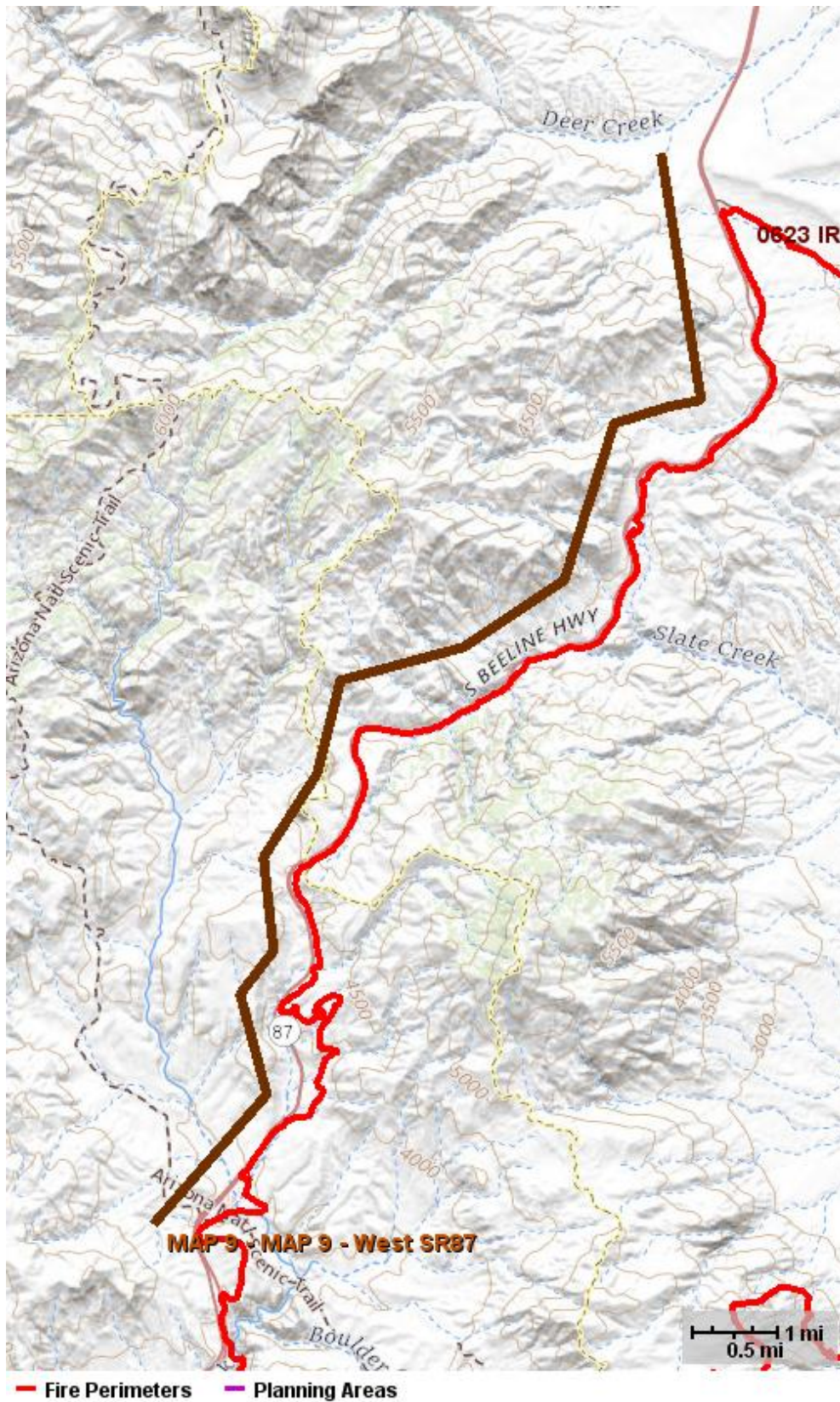
**Notifications:****Recommended Management Action:**

- Forest Agency Administrators and Fire Managers (include Payson RD)
- DPS (ADOT) & APS
- Gila and Maricopa County Sherriff's and Emergency Managers
- State of Arizona Forestry and Fire
- Private residents and ranches
- Payson Fire Department
- Payson Police Department
- Payson City Managers
- Consider pre-evac notification and/or evacuation of communities north near Payson.
- Consider point protection, direct and indirect strategies to suppress fire.
- Consider developing more MAPs for communities surrounding Payson.
- Consider expanding the existing area closure of the Bush fire.

**Resources****Recommended:**

- Consider Branching existing organization or adding another IMT to assist with span of organizational control.
- Consider ordering more resources (Engines, Handcrews, Equipment and Aviation)
- Consider ordering more Law Enforcement and road guards

## Management Action Point 9



NAME	VALUE
Incident Name	Bush
Cost	\$250,000
Shape	MAP 9 - West SR87

Activated	06/18/2020
Deactivated	
Status	Active

## Condition

**MAP Description:** This MAP is west of SR87 running north to south from Sunflower to north of the SR87 and SR188 junction.

**Intent:** If fire crosses or threatens the MAP, consider suppression strategies and tactics to protect and reduce impacts to the community of Sunflower and surrounding private ranches and lands.

### Values at Risk:

**Probability:** 5%-19% Low - Moderate (Determined from FS PRO)

With the potential of spotting with heavier fuels and grass loading the probability is higher

- Community of Sunflower
- Diamond Ranch
- Cross F Ranch
- APS - KV power lines
- Deer Creek
- Browns Ranch
- Bar T Bar Ranch
- Rye
- Gisela
- Seventy-Six Ranch
- Oxbow estates
- Communities surrounding Payson
- T&E species
- Sonoran Desert
- Livestock
- Structural Range Improvements
- Watershed and future flooding issues
- Sonoran Desert ecosystem
- Mazatzal Wilderness Area

## Actions

### Notifications:

#### Recommended Management Action:

- Forest Agency Administrators and Fire Managers (include Cave Creek RD)
- DPS (ADOT) & APS
- Gila and Maricopa County Sherriff's and Emergency Managers
- State of Arizona Forestry and Fire
- Private residents and ranches
- Minerals and Geology Specialists (for the Mercury Mines and other mining activity)
- Consider point protection, direct and indirect strategies to suppress fire around private property in the Sunflower community.
- Consider evacuations of communities and private inholdings north of SR188 and SR87 junction (including but not limited to Deer Creek, Bar T Bar Ranch, Rye, Browns Ranch, Seventy-Six Ranch, Gisela and Oxbow Estates).
- Consider expanding the existing area closure of the Bush fire.

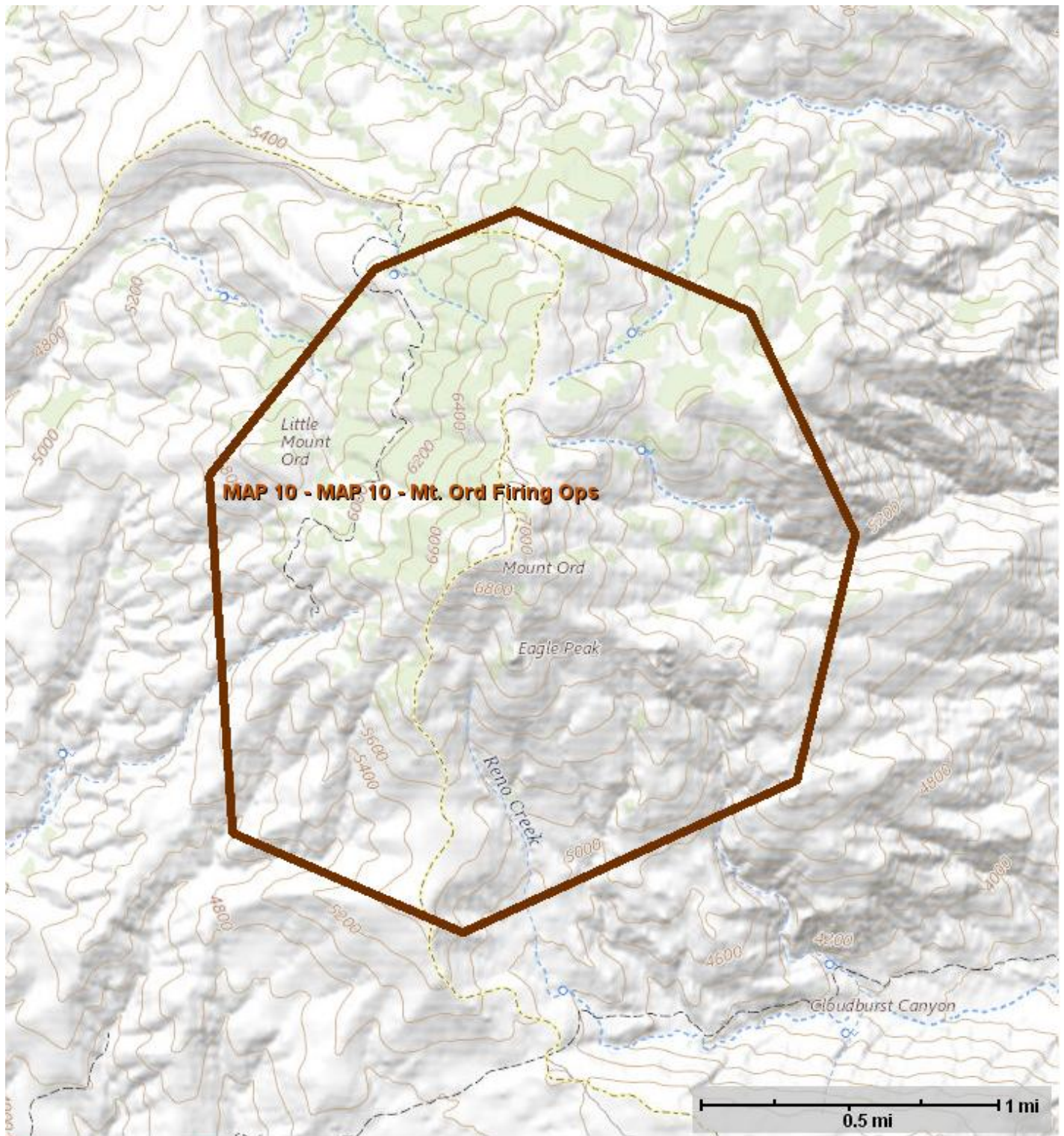
## Resources

### Recommended:

- Consider Branching existing organization or adding another IMT to assist with span of organizational control.
- Consider ordering more resources (Engines, Handcrews, Equipment and Aviation)



**Management Action Point 10**



**— Fire Perimeters — Planning Areas**

NAME	VALUE
Incident Name	Bush
Cost	
Shape	MAP 10 - Mt. Ord Firing Ops
Activated	06/18/2020
Deactivated	
Status	Active



## Condition

**MAP Description:** This MAP is more conditional than land based. Once firing operations begin on Mt Ord to protect values of the communications sites and properties.

**Intent:** Once firing operations begin on Mt Ord, consider notifications of pre-evac notices and evacuation as needed for Jake's Corner, and communities north of the SR87 and SR188 junction.

**Values at Risk:**

**Probability:** 80-100% Very High (Determined from FS PRO)

- Community of Sunflower
- Diamond Ranch
- Cross F Ranch
- APS - KV power lines
- Jake's Corner
- Deer Creek
- Browns Ranch
- Bar T Bar Ranch
- Rye
- Gisela
- Seventy-Six Ranch
- Oxbow estates
- Communities surrounding Payson
- T&E species
- Sonoran Desert
- Livestock
- Structural Range Improvements
- Watershed and future flooding issues
- Sonoran Desert ecosystem
- Mazatzal Wilderness Area

## Actions

**Notifications:**

**Recommended Management Action:**

- Forest Agency Administrators and Fire Managers (include Cave Creek and Payson RD)
- DPS (ADOT) & APS
- Gila and Maricopa County Sherriff's and Emergency Managers
- State of Arizona Forestry and Fire
- Private residents and ranches
- Consider point protection, direct and indirect strategies to suppress fire around private property in the Sunflower community.
- Consider evacuations of communities and private inholdings north of SR188 and SR87 junction (including but not limited to Deer Creek, Bar T Bar Ranch, Rye, Browns Ranch, Seventy-Six Ranch, Gisela and Oxbow Estates).
- Consider expanding the existing area closure of the Bush fire.

## Resources

**Recommended:**

- Consider ordering more resources (Engines, Handcrews, Equipment and Aviation)

## 1.9. Cost

### Estimated Final Cost

NAME	VALUE
Estimated Final Cost	\$14,000,000
Method(s) Used	e-ISuite, Other

### Comments

Based on current information

## 1.10. Rationale

### Bush Fire Rationale - 06-15-2020

---

In close coordination with State of AZ - Department of Forestry and Fire officials, who also have jurisdictional responsibilities within the planning area, the decision to utilize a full-suppression strategy is appropriate. The values at risks (VARs) have been discussed and identified. Risk based decisions to achieve full suppression should be utilized that prioritize the health and safety of assigned resources and the public, protection of identified VARs, and impacts to the natural and heritage resources. Incident management actions are being implemented during the COVID-19 pandemic and mitigation measures should be implemented to minimize risk and exposure to assigned resources, the communities affected by the incident and other persons engaged in management activities.

### Type 1 Team Decision

---

My decision is to upgrade the Bush incident from a Type 2 IMT to a Type 1 IMT. The fire has a full suppression strategy. The fire is expected to be long-term event due to the dry fuel conditions and a 2-4 week time frame before the arrival of the seasonal monsoons. Until that time, weather is expected to be hot and dry with winds at times single digit relative humidity without good RH recoveries. Probabilities of success are good with the increase in capacities that a Type 1 team will bring. Retaining the assigned Type 2 team was considered, but rejected due to the increase in communities at risk, the size of the fire, the number of firefighters assigned, the complexity of firefighting and the logistical, communication, and political concerns.

The State of Arizona shared in this decision to bring in the Type 1 team. They agreed that the fire size, behavior, and threats to communities and private property warranted the change; also considered were the logistics, communication, political and socio-economic considerations and well as the impacts to residents and visitors had increase over the course of the incident.

The values at risk are summarized in the WFDSS risk assessment but include the communities of Tonto Basin, Punkin Center, Jake's Corner, Rye, Gisela, Sunflower, Bar T Bar Ranch and Deer Creek. Other values at risk include various private in-holdings, KV powerlines (APS), Mt Ord communications tower, and the transportation corridors of State Route 87, 188 and the Bush Highway. Resource values at risk include the Sonoran Desert, the Four Peaks Wilderness, numerous historic and pre-historic archaeological sites, and Threatened/Endangered/Sensitive species.

The risk assessment include considerations to firefighter safety, communities and values at risk, and the logistical concerns with a fire of this size. Over 600 fire fighters are currently assigned to incident, and firefighter exposure is expected to be high. The fire is currently over 173 square miles, with 2 branches and 9 divisions. This large fire creates logistical challenges that come with multiple base and spike camps.

The current fire situation is 114,941 and 5% contained. The weather has been dry and hot with winds pushing the fire. Fuel conditions have been extreme with ERCs above the 90th percentile. Fire behavior has been very active with 20k-30k acres burnt per day being average. Fire growth has been consistent since the fire start on 6/13/2020, and is expected to continue.

Containment of the fire growth is expected along the major transportation corridors of SR87 and SR188 to the west, north and east, and the Salt River corridor to the south. If the fire were to become established outside of these containment features, it would trigger a discussion of the existing decision and could lead to a new WFDSS decision.

### Type 3 Decision

---

My decision is to downgrade the Bush incident from a Type 1 IMT to a Type 3 IMT. The fire has a full suppression strategy. The fire is expected to be moderate length event due to the dry fuel conditions and a 2-4 week time frame before the arrival of the seasonal monsoons. Until that time, weather is expected to be hot and dry with winds at times single digit relative humidity without good RH recoveries. Probabilities of success are good with the containment that the Type 1 team was able to attain. Downgrading the incident to a Type 4 was considered, but rejected due to the communities at risk, the size of the fire, the number of firefighters assigned, the complexity of firefighting and the logistical, communication, and political concerns.

The State of Arizona shared in this decision to downgrade the incident to a Type 3 team. They agreed that the fire size, behavior, and current containment warranted the change; also considered were the logistics, communication, political and socio-economic considerations and well as less impacts to residents and visitors over the course of the incident.

The values at risk continue to be the communities of Tonto Basin, Punkin Center, Jake's Corner, Rye, Gisela, Sunflower, Bar T Bar Ranch and Deer Creek. Other values at risk include various private in-holdings, KV powerlines (APS), Mt Ord communications tower, and the transportation corridors of State Route 87, 188 and the Bush Highway. Resource values at risk include the Sonoran Desert, the Four Peaks Wilderness, numerous historic and pre-historic archaeological sites, and Threatened/Endangered/Sensitive species.

The risk assessment include considerations to firefighter safety, communities and values at risk, and the logistical concerns with a fire of this size. 522 fire fighters are currently assigned to incident, and firefighter exposure is expected to be moderate. The fire is currently over 173 square miles, with 2 branches and 6 divisions. This large fire creates logistical challenges that come with multiple base and spike camps.

The current fire situation is 186,967 and 73% contained. The weather has been dry and hot with winds pushing the fire. Fuel conditions have been extreme with ERCs above the 90th percentile. Containment rates have been steadily increasing, and rates of fire spread have been stable for the last 3 days.

Containment of the fire growth has been obtained along the major transportation corridors of SR87 and SR188 to the west, north and east, and the Salt River corridor to the south. If the fire were to become established outside of these containment features, it would trigger a discussion of the existing decision and could lead to a new WFDSS decision.