



Bush Incident Decision

Published
06/18/20 22:47

Table of Contents

| | |
|--------------------------------|----|
| 1. Decision | 2 |
| 1.1. Decision Summary..... | 2 |
| 1.2. Incident Information..... | 3 |
| 1.3. Weather..... | 6 |
| 1.4. Modeling..... | 10 |
| 1.5. Risk..... | 11 |
| 1.6. Benefits..... | 19 |
| 1.7. Objectives..... | 20 |
| 1.8. Course of Action..... | 29 |
| 1.9. Cost..... | 49 |
| 1.10. Rationale..... | 50 |

1. Decision

1.1. Decision Summary

Decision Information

| NAME | VALUE |
|-------------------------|--------------------------------------------------------------------------------------------|
| Published | 06/18/2020 22:47 CDT |
| Estimated Cost | \$12,700,000 |
| Incident Owner(s) | Mary Lata, CorDell Taylor, Taiga Rohrer, Dana Bagnoli |
| Editor(s) | Arthur Gonzales, Andrew Leiendecker, Matthew Lane, thomas torres, Wesley Hall |
| Reviewer(s) | Bradley Johnson, Dave Ramirez, Erick Stemmerman, Kelly Jardine, Matthew Lane, Taiga Rohrer |
| Approver(s) | thomas torres |
| Natl Preparedness Level | 3 |

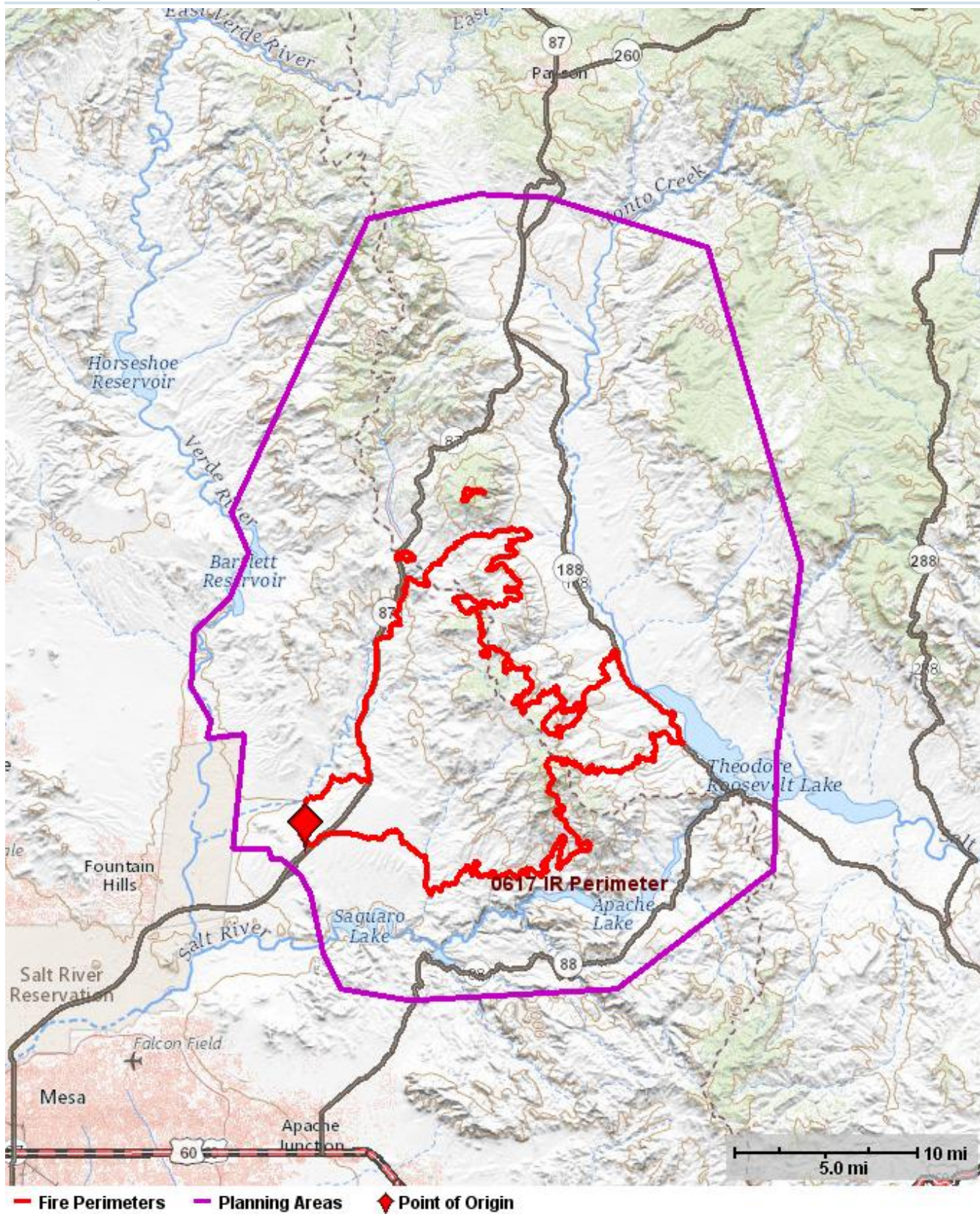
Decision History

| Editor Name | Action | Date (CDT) | Comment |
|-----------------|------------------|------------------|---------|
| torres, thomas | Published | 06/18/2020 22:47 | |
| torres, thomas | Approved | 06/18/2020 22:47 | |
| Taylor, CorDell | Review Requested | 06/18/2020 22:46 | |
| Taylor, CorDell | Review Requested | 06/18/2020 22:44 | |

1.2. Incident Information

Incident Information

| NAME | VALUE |
|------------------------------|-------------------------------------------------------|
| Incident Name | Bush |
| Unique Fire Identifier | 2020-AZTNF-001581 |
| Responsible Unit Name | Tonto National Forest |
| FireCode | M6M6 |
| P-Code | P3M6M6 |
| Point of Origin | 33.6257N / 111.562 W |
| Incident Size | 114,941 acres |
| Latest WFDSS Perimeter Size | 115,029 acres |
| Incident Cause | Human |
| Incident Type | Wildfire |
| Incident Discovery | 06/13/2020 13:45 |
| Contained | |
| Controlled | |
| Out | |
| Jurisdictional Unit | AZTNF - Tonto National Forest |
| Jurisdictional Agency(s) | USFS |
| Geographic Area (prep level) | Southwest (4) |
| Owner Name(s) | Mary Lata, CorDell Taylor, Taiga Rohrer, Dana Bagnoli |



Bush Fire - 6/13

Photo 4
Helicopter view



1.3. Weather

Fire Weather Zone Forecast

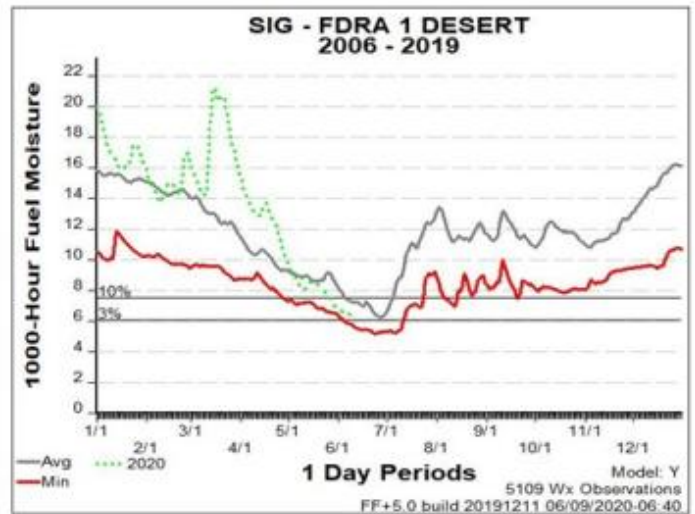
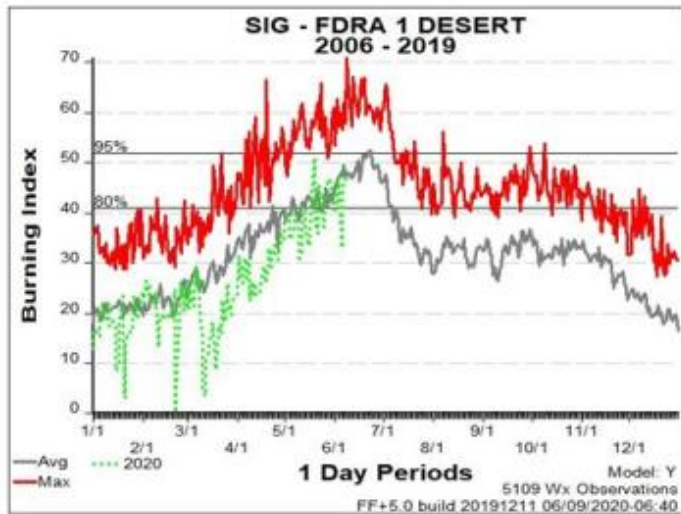
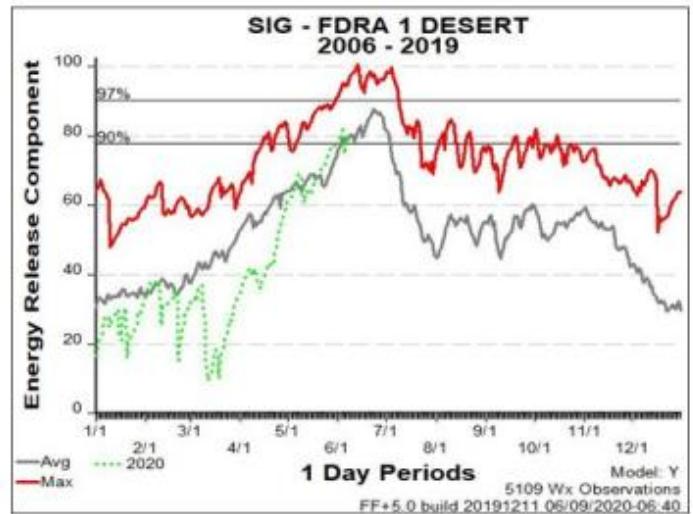
892
FNUS55 KPSR 182054
FWFPSR
Fire Weather Planning Forecast for Southwest and South-Central
Arizona and Southeast California
National Weather Service Phoenix AZ
154 PM MST Thu Jun 18 2020
.DISCUSSION...
Some areas could see afternoon gusts of 20-25 mph this afternoon through late evening. Overall, wind speeds and directional trends will behave more typical with local terrain influences. Dry conditions will remain in place with daytime humidity values dropping below 10 percent for many areas. Overnight recoveries will generally reach into the 20-40 percent range, although late evening gulf surges across southwestern Arizona and southeast California will support overnight recoveries of 35-60%.
Note...Additional Fire Weather Forecast information can be found in the Area Forecast Discussion. See product PHXAFDPSR.
AZZ133-190900-
Southern Gila County/Tonto National Forest Foothills-
Southern Tonto NF/West San Carlos BIA/South Portion Ft Apache BIA/
CAZ-
154 PM MST Thu Jun 18 2020
.TONIGHT...
* Sky/weather.....Clear.
* Min Temperature.....54-69.
* 24 hr trend.....Little change.
* Max Humidity.....25-36 pct.
* 24 hr trend.....4 pct wetter.
* Winds - 20 foot...Slope/Valley..West 5 to 10 mph in the evening becoming south after midnight.
* Winds...10000 FT MSL.....Southwest 10 to 20 mph in the evening becoming light and variable after midnight.
* Chance of Precip.....0 percent.
* LAL.....1.
.FRIDAY...
* Sky/weather.....Sunny.
* Max Temperature.....85-99.
* 24 hr trend.....Little change.
* Min Humidity.....6-11 pct.
* 24 hr trend.....Little change.
* Winds - 20 foot...Slope/Valley..Southeast 5 to 10 mph in the morning becoming southwest in the afternoon.
* Winds...10000 FT MSL.....South 5 to 15 mph.
* Chance of Precip.....0 percent.
* LAL.....1.
* Haines High Level Index.....5 moderate potential for large plume dominated fire growth.
.FRIDAY NIGHT...
* Sky/weather.....Clear.
* Min Temperature.....55-71.
* 24 hr trend.....Little change.
* Max Humidity.....19-29 pct.
* 24 hr trend.....7 pct drier.
* Winds - 20 foot...Slope/Valley..West 5 to 10 mph in the evening becoming northeast after midnight.
* Winds...10000 FT MSL.....West 10 to 15 mph.
* Chance of Precip.....0 percent.
* LAL.....1.
.SATURDAY...
* Sky/weather.....Sunny.
* Max Temperature.....88-102.
* 24 hr trend.....3 degrees warmer.
* Min Humidity.....8-13 pct.
* 24 hr trend.....Little RH change.
* Winds - 20 foot...Slope/Valley..Southeast 5 to 10 mph in the morning becoming southwest in the afternoon.
* Winds...10000 FT MSL.....Light and variable in the morning becoming southwest 5 to 15 mph in the afternoon.
* Chance of Precip.....0 percent.
* LAL.....1.
* Haines High Level Index.....5 moderate potential for large plume dominated fire growth.
.EXTENDED...
.SUNDAY...Clear. Lows 58-75. Highs 91-104. West winds 5 to 15 mph. Minimum relative humidity may be lower than 15 percent.
.MONDAY...Clear. Lows 59-75. Highs 93-106. West winds 5 to 15 mph. Minimum relative humidity may be lower than 15 percent.
.TUESDAY...Mostly clear. Lows 61-76. Highs 93-106. West winds 5 to 15 mph. Minimum relative humidity may be lower than 15 percent.

Fire Weather Zone Forecast

.WEDNESDAY...Mostly clear. Lows 62-77. Highs 95-108.
.THURSDAY...Mostly clear. Lows 63-78. Highs 94-108.
\$\$
.8 TO 10 DAY OUTLOOK...Friday June 26th through Sunday June 28th:
Above normal temperatures and near to below median precipitation.

ERC Sonoran Desert FDRA

ERC chart Sonoran Desert

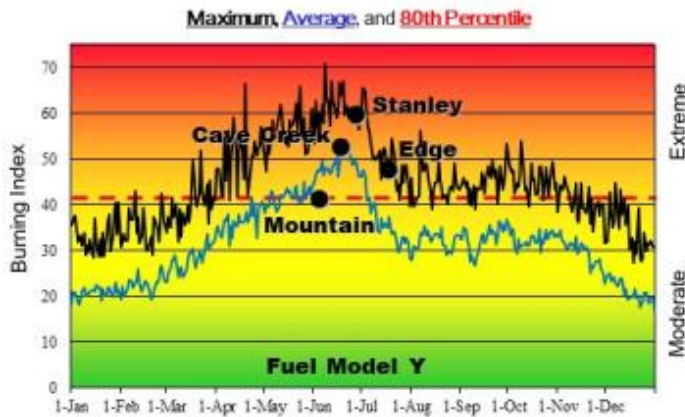


Bush fire - 6/13 near origin

[Photo 2](#)

Parking area





Fire Danger Area: Sonoran Desert

- Phoenix Interagency Fire Management Area
- Tonto NF, San Carlos Agency, Pima/Salt River Agencies, and Tonto National Monument.
- Fire Wx Forecast Zone AZ132
- Sunset Point* (020510), Globe* (020601) Tonto Basin* (020606) and San Carlos 1* (020608) RAWS
- *Meets NWCG Weather Station Standards



Fire Danger Graph Interpretation:



- EXTREME** - Use extreme caution
- CAUTION** - Watch for change
- MODERATE** - Lower potential, but always be aware

- MAXIMUM** - Highest ERC / BI by day for 2006 - 2019
- AVERAGE** - Average daily ERC / BI value for 2006 - 2019
- 90th Percentile ERC** - Only 10% of the days from 2006 - 2019 were over **78**
- 80th Percentile BI** - Only 20% of the days from 2006 - 2019 were over **41**

Local Thresholds - Watch Out:

Erratic Fire behavior associated with thunderstorm activity. Watch for overnight temps above 90 degrees and poor night time RH recovery. Sundowner (strong evening down slope) winds can develop quickly. Extreme Fire Behavior when RH is less than 10% or live fuel moistures fall below 75%.

Remember what Fire Danger tells you:

- ✓ Energy Release Component gives seasonal trends calculated from 13:00 temperature and RH, daily temperature & RH ranges, and precipitation duration
- ✓ Burning Index gives day to day fluctuations calculated from 13:00 temperature, wind, and RH, daily temperature & RH ranges, and precipitation duration
- ✓ Watch local conditions and variations across the landscape - Fuel, Weather, Topography

Past Fire Experience:

Tonto NF Edge Complex July 16, 2005 (ERC 91, BI 47), 72,000 acres. Phoenix Weather Temp. 112, RH 11, Windspeed 15 mph.

Tonto NF Cave Creek Complex June 21, 2005 (ERC 82, BI 53), 243,950 acres. Phoenix Weather Temp. 112, RH 8, Windspeed 8 mph.

San Carlos Agency Stanley Fire June 26, 2011 (ERC 92, BI 58), 8,832 acres. San Carlos 1 RAWs Temp. 107, RH 7, Windspeed 12 mph.

Tonto NF Mountain Fire June 7, 2019 (ERC 68, BI 41), 7,470 acres. Tonto Basin RAWs Temp. 97, RH 12, Windspeed 7 mph.

Check with local personnel about annual grass fuel loading. Large fires can occur at low ERC if annual grasses and fine fuels are continuous enough to carry a fire.

Produced May 11, 2020 using FireFamily+ v5.0 (PIFC_FFP_DB_updated_05_07_20.mdb)

Responsible Agency: Phoenix Interagency Fire

1.4. Modeling

Short Term (N Flank Calib 0616 Run 3 - Started on 06/17/20 13:00)

Short Term Fire Behavior Analysis Information

| NAME | VALUE |
|------------------------|--------------------------|
| Analysis Name | N Flank Calib 0616 Run 3 |
| Burn Period | 5hours |
| Number of Burn Periods | 1 |
| Analysis Date/Time | 06/17/2020 13:00 CDT |
| Automated | No |

Image is not currently available.

Near Term (Projection of EOS 0618 w Ext Landscape - Started on 06/17/20 18:00 ended on 06/18/20 22:00)

Near Term Fire Behavior Analysis Information

| NAME | VALUE |
|---------------|----------------------------------------|
| Analysis Name | Projection of EOS 0618 w Ext Landscape |

Burn Periods

| Date | Start Hour | End Hour | Acres |
|------------|------------|----------|----------|
| 06/17/2020 | 18 | 22 | 8,949.9 |
| 06/18/2020 | 12 | 22 | 34,576.4 |

Image is not currently available.

FSPRO (FSPRO 7 Day PM Update 0617 - Started on 06-17-2020)

FSPRO General Information

| NAME | VALUE |
|----------------|----------------------------|
| Analysis Name | FSPRO 7 Day PM Update 0617 |
| Analysis Start | 06/17/2020 |
| Duration | 7 days |
| Simulations | 1200 fires |

Image is not currently available.

1.5. Risk

Relative Risk

| NAME | VALUE |
|---------------|----------------------|
| Relative Risk | High |
| Duration | Moderate |
| Saved By | Taylor, CorDell |
| Completed | 06/18/2020 20:46 CDT |

Relative Risk Notes

Fire potential is always high in the weeks before monsoon rains begin. Typically, monsoon starts in late June to early July. This year there is above average potential for undesirable fire effects and behavior in the desert. The risk potential is the result of invasive grass production from two years of average to above average precipitation that has increased fine fuel loading. Fire behavior this time of year puts many values at risk that are not adapted to fire, or are highly departed from historic conditions.

Values Notes

Within the planning area there are:

NATURAL/CULTURAL/RESOURCE

*2 Occupied Gila Top Minnow sites (Mud Springs and Hidden Water Springs.)

*at least 2 MSO PACs

*Sycamore Creek, which has numerous sensitive species (fauna)

*Retardant avoidance areas associated with threatened and endangered species

*Bald eagle cliff nests near Saguaro Lake.

*All of the Sonoran Desert area is habitat for Desert Tortoise

*4 Peaks Study Site for Sonoran Desert Tortoise

*Sugar Loaf Study Area

*Cane Springs (or Brown Springs?) Cabin

*Arizona G&F Cabin

*Prehistoric sites are found throughout the planning area

*Range Improvements (fences, tanks, etc.) throughout the planning area

*Two herds, one to the north and one to the east of the current location of the fire. ~200 head, 31 bulls, 20 horses (average).

*Two new wildlife waters that G&F just put in near Edwards Park and Big Pine Flat

*Four Peaks Wilderness

*Livestock

*Camp Reno Historic cavalry camp

INFRASTRUCTURE

Bush Highway

Hwy 87

Hwy 188

Broadcast site of of FS143

Amethyst Mine

High Voltage KV power lines (APS)

Dos S Ranch

Sunflower Estates

Sunflower USFS work center

Cross F Ranch

Diamond Ranch

Mt Ord lookout and communication site

COMMUNITIES

Tonto Basin

Punkin Center

Jake's Corner

Sunflower

Multiple private inholdings and structures

Deer Creek

Gisela

Rye

RECREATION:

Tonto Basin and Theodore Roosevelt Lake

Apache, Canyon and Saguaro Lakes

Butcher Jones Recreation Site

Saguaro Del Norte Recreation Site (including a marina)

Pobrecito Recreation Site

Lower Sycamore Staging Area

Four Peaks Staging Area

Sugarloaf Staging Area

Mesquite Stating Area

Multiple trails, NFS roads, ORV routes, including the Arizona National Scenic Trail

Proximity & Threat of Fire to Values

The fire is continuing to burn with extreme rates of spread in the grass and brush fuel models with actively burning throughout the night. Winds continue to be a main contributor for fire spread. Night, winds are blowing downhill into Tonto Basin. The fire is already burning in the Sonoran Desert (not beneficial), and is moving towards some of the values listed above. Given current and expected fire behavior and the current proximity of fire to the values listed above, the Threat of Fire to Values is rated as high.

Social/Economic Concerns

The population of Tonto Basin and Punkin Center includes a substantial percentage of senior citizens, many of whom are vulnerable to smoke impacts.

Highway and recreation site closures are already pending, and could have significant effects to local tourism and economics. The impact of closures is exacerbated as communities are trying to reopen after restrictions related to COVID-19.

Travel disruptions will be significant because Hwy 87 is one of the main arteries between the Mogollon Rim and the Phoenix Valley.

This alone will be a significant impact, routing a lot of traffic through Tonto Basin and/or Camp Verde (and Interstate 17) when Highway 87 is closed.

There is potential to also close the Bush Highway earlier than usual because of additional traffic - further increasing the traffic on SR88 and SR 260

Hazards Notes

Fuel conditions are high. Two years of above average precipitation through the winter and spring have produced significantly increased production of invasive grasses. These grasses now have a litter layer from last year, as well as above average production from this year's crop. Generally, desert surface vegetation is not contiguous, but the grasses this year are providing contiguous fuels over large areas.

Current ERCs are in the 95%ile in both the Brush and Sonoran FDRAs. BI for both FDRAs is currently in the 97th %ile. Live fuel moistures are currently plummeting, and fuel moistures for woody species (oak/manzanita) are well below levels where they burn readily.

The fire has exhibited extremely active behavior, with 50 foot flame lengths along the highway that sustained spread across SR87, with short range spotting 100

Potential Fire Growth

Good potential for alignment, with no significant barriers. The fire growth is expected to increase in areas with steeper slopes and, as it gets higher in elevation, chaparral (dense, decadent shrubby fuel), and Arizona Cypress.

Probability Notes

Time of Season

Fire is active late in the season with 2 to 3 weeks until onset of typically season ending event from monsoonal effects. Monsoon precipitation is predicted to be on time starting in late June to early July

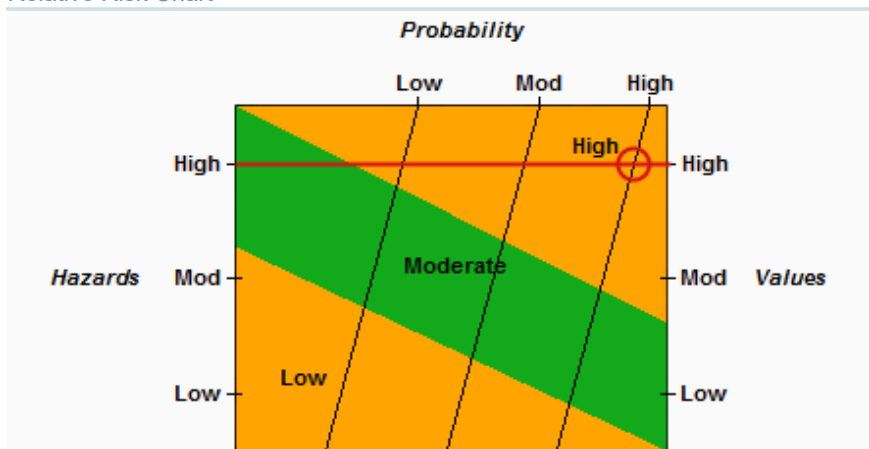
Barriers to Fire Spread

Firing operations along Hwy 87 and Hwy 188 will act as a barrier to spread on the West and east flanks of the fire. There are very few barriers to fire spread to the north now that the fire is established North around Mt Ord between Hwy 87 and Hwy 188.

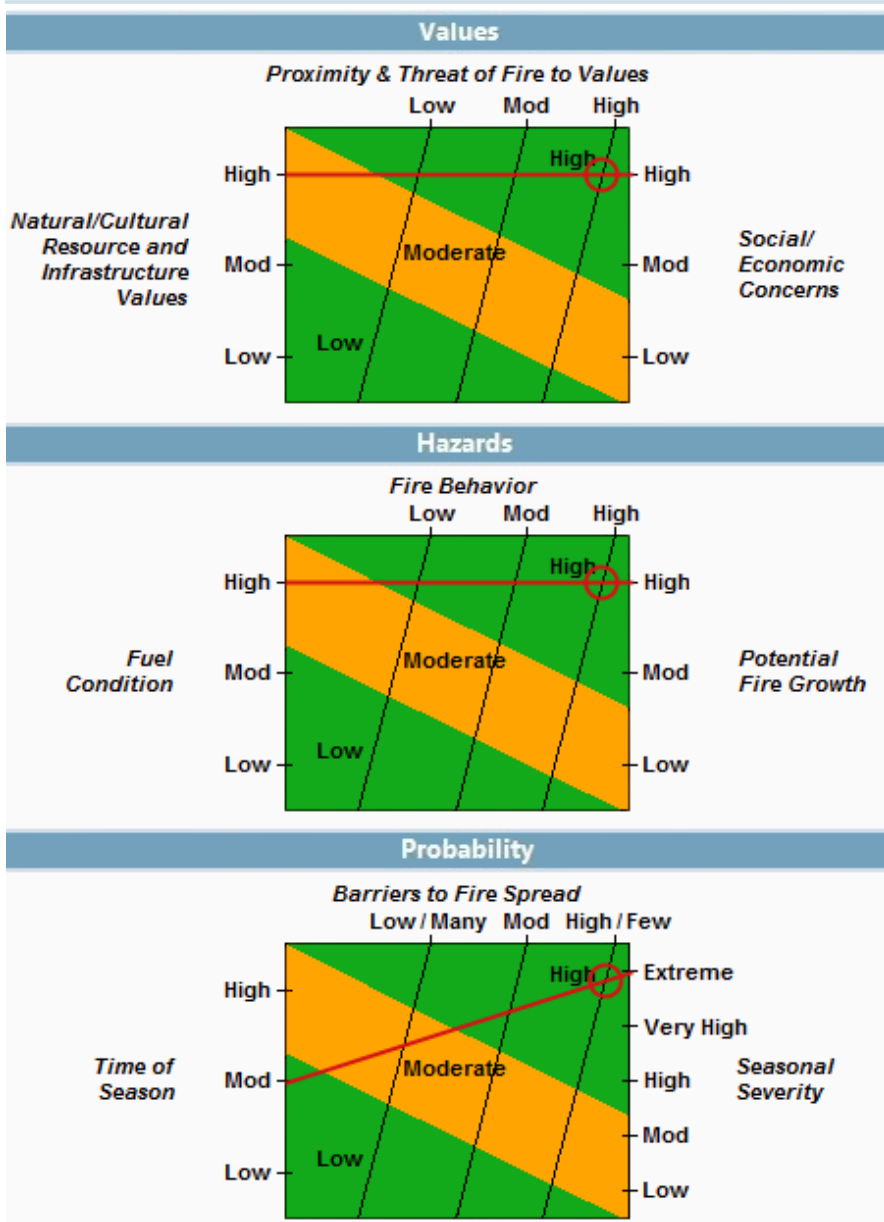
Seasonal Severity

Currently indices, weather, and fuel conditions are at extreme for the season. While they may not be out of the ordinary for this time of year, we are currently at the peak severity for the southwest.

Relative Risk Chart



Relative Risk Inputs



Organization Assessment

| NAME | VALUE |
|-----------------------------|----------------------|
| Unit Recommended Org Type 1 | |
| Saved By | Taylor, CorDell |
| Completed | 06/18/2020 20:50 CDT |

Organization Assessment Notes

A Type 1 organization should be a good fit for this fire, given the current and expected fire behavior and effects to affected areas. Relative risk as 'high' is largely because of potential fire behavior (fuel conditions, weather, fuels, and terrain). External influences are significant largely because of the visibility of the fire, and the potential for it to impact tourism, and major highways. This fire is impacting several main travel routes and communities.

Relative Risk Notes

Fire potential is always high in the weeks before monsoon rains begin. Typically, monsoon starts in late June to early July. This year there is above average potential for undesirable fire effects and behavior in the desert. The risk potential is the result of invasive grass production from two years of average to above average precipitation that has increased fine fuel loading. Fire behavior this time of year puts many values at risk that are not adapted to fire, or are highly departed from historic conditions.

Implementation Difficulty Notes

Potential Fire Duration

Duration is listed as moderate. Monsoon precipitation is predicted to be on time, though temperatures will be above normal. Typically, monsoon starts in late June to early July, though it can often be a week or two later in the Phoenix Valley because of the heat load accumulated at lower elevations.

Incident Strategies

There are already a mix of air and ground resources engaged, and closures have been implemented. Management Action Points (MAP) have been identified to prepare communities for Ready, Set, Go evacuation strategies. The fire is posing threats to multiple areas of high values simultaneously. Firing Operations and other tactics are increasing in complexity with the fuels and terrain. This elevates the incident strategies area to high.

Functional Concerns

Currently, there are numerous divisions on the fire. Air resources will be a significant part of the strategy as fire continues to threaten values at risk. Air resources could be limited at times, but should not be a significant complexity. The area the fire could burn into has few barriers, and limited access because of terrain. As the fire increases in , the logistic and other functional concerns are elevated. COVID-19 adds to the difficulty and complexity of managing wildland fire.

Socio/Political Concerns Notes

Objective Concerns

The primary objective for the Bush Fire is to put it out as quickly and safely as possible.

Covid-19 is expected to increase the active interest in the management of this incident on the part of the public, the media, and cooperating agencies.

If the fire moves into upper elevations, there could be some beneficial effects, but not until it's burned through thousands of acres of Sonoran Desert where the effects are not beneficial.

External Influences

Covid-19 concerns are as described above.

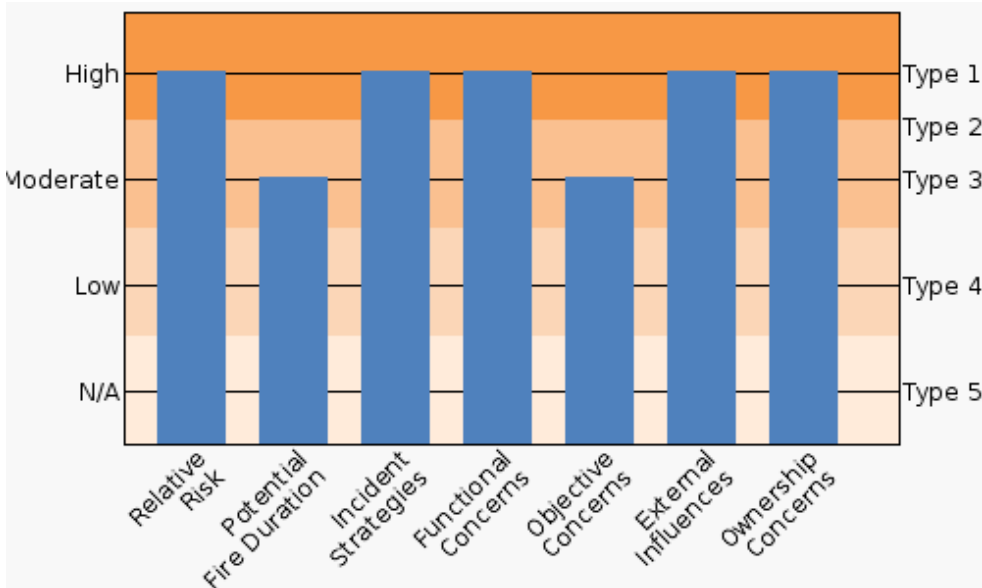
The potential impact of Highway 87 and the Bush Highway being closed at times, particularly on a weekend, will influence traffic on Highway 260 over to Interstate 17. Traffic is also likely to be routed through Tonto Basin and Globe.

There is potential for significant smoke impacts in Tonto Basin

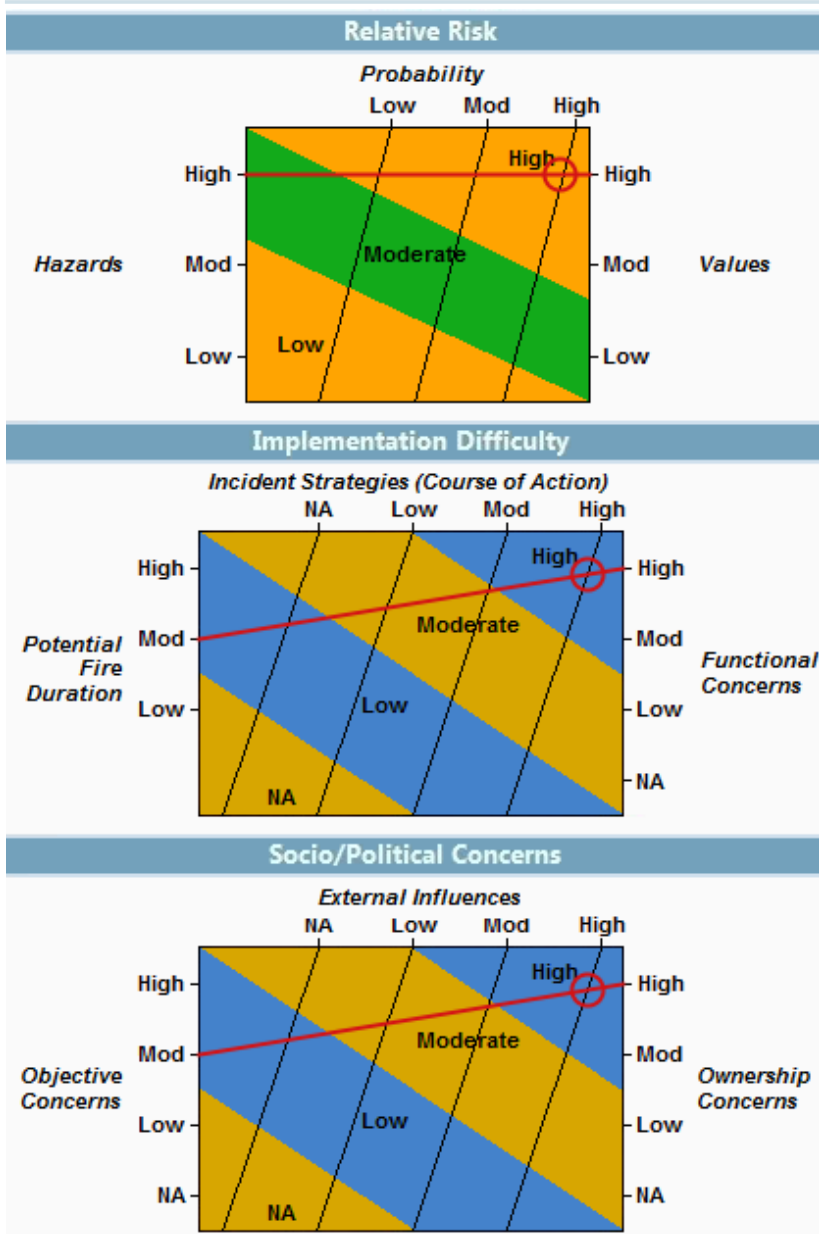
Ownership Concerns

The entire fire is burning on USFS with suppression efforts near several private inholdings and communities. The entire planning area is mostly on land managed by the USFS taken in several communities, with a small portion on state jurisdictional land.

Organization Assessment Chart



Unit Recommended Org:Type 1



Planning Area Values Inventory Generated at 06/17/2020 23:34

| NAME | VALUE |
|--------------------|------------------|
| Planning Area Name | 06/18/2020 22:47 |
| Incident Name | Bush |
| Planning Area Size | 726,502 acres |

| Category | Value | Data Source | Currency | Coverage |
|--------------------------------------------------|--------------|-------------|----------|----------|
| AZTNF - Land / wilderness | 63,404 acres | AZTNF | | Unit |
| AZTNF - Lands / Designations / Special Mgt Areas | 52,581 acres | AZTNF | | Unit |
| AZTNF - Minerals / Hazard Cleanp Sites | 11 acres | AZTNF | | Unit |
| AZTNF - Minerals / High Risk Repository | 7 acres | AZTNF | | Unit |
| AZTNF - Mining / Mercury Mines | 16 | AZTNF | | Unit |
| AZTNF - Strategic Response / POD_100_Restore | 25,015 acres | AZTNF | | Unit |
| AZTNF - Strategic Response / POD_133_Exclude | 2,462 acres | AZTNF | | Unit |

| Category | Value | Data Source | Currency | Coverage |
|---------------------------------------------------|---------------|-------------|----------|----------|
| AZTNF - Strategic Response / POD_139_Restore | 1,914 acres | AZTNF | | Unit |
| AZTNF - Strategic Response / POD_35_Restore | 2,074 acres | AZTNF | | Unit |
| AZTNF - Strategic Response / POD_36_Restore | 1,444 acres | AZTNF | | Unit |
| AZTNF - Strategic Response / POD_39_Restore | 6,158 acres | AZTNF | | Unit |
| AZTNF - Strategic Response / POD_46_Protect | 8,231 acres | AZTNF | | Unit |
| AZTNF - Strategic Response / POD_47_Protect | 6,817 acres | AZTNF | | Unit |
| AZTNF - Strategic Response / POD_50_Protect | 9,769 acres | AZTNF | | Unit |
| AZTNF - Strategic Response / POD_57_Restore | 31,285 acres | AZTNF | | Unit |
| AZTNF - Strategic Response / POD_58_Exclude | 8,889 acres | AZTNF | | Unit |
| AZTNF - Strategic Response / POD_59_Exclude | 948 acres | AZTNF | | Unit |
| AZTNF - Strategic Response / POD_60_Maintain | 115,849 acres | AZTNF | | Unit |
| AZTNF - Strategic Response / POD_61_Restore | 12,282 acres | AZTNF | | Unit |
| AZTNF - Strategic Response / POD_62_Exclude | 1,251 acres | AZTNF | | Unit |
| AZTNF - Strategic Response / POD_64_Exclude | 14,090 acres | AZTNF | | Unit |
| AZTNF - Strategic Response / POD_65_Restore | 35,021 acres | AZTNF | | Unit |
| AZTNF - Strategic Response / POD_67_Exclude | 3,506 acres | AZTNF | | Unit |
| AZTNF - Strategic Response / POD_68_Restore | 84,227 acres | AZTNF | | Unit |
| AZTNF - Strategic Response / POD_69_Exclude | 34,453 acres | AZTNF | | Unit |
| AZTNF - Strategic Response / POD_70_Exclude | 5,000 acres | AZTNF | | Unit |
| AZTNF - Strategic Response / POD_73_HighComplexit | 39,581 acres | AZTNF | | Unit |
| AZTNF - Strategic Response / POD_74_Exclude | 7,063 acres | AZTNF | | Unit |
| AZTNF - Strategic Response / POD_77_Exclude | 4,825 acres | AZTNF | | Unit |
| AZTNF - Strategic Response / POD_80_Exclude | 22,268 acres | AZTNF | | Unit |
| AZTNF - Strategic Response / POD_82_Restore | 103,219 acres | AZTNF | | Unit |
| AZTNF - Strategic Response / POD_84_Exclude | 3,682 acres | AZTNF | | Unit |
| AZTNF - Strategic Response / POD_87_Exclude | 23,296 acres | AZTNF | | Unit |
| AZTNF - Strategic Response / POD_89_Exclude | 26,215 acres | AZTNF | | Unit |
| AZTNF - Strategic Response / POD_92_Exclude | 11,531 acres | AZTNF | | Unit |
| AZTNF - Wildlife / Bald Eagles | 24 | AZTNF | | Unit |
| AZTNF - Wildlife / Gila Chub | 8 acres | AZTNF | | Unit |
| AZTNF - Wildlife / Gila topminnow | 8 | AZTNF | | Unit |
| AZTNF - Wildlife / Golden Eagle | 77 acres | AZTNF | | Unit |
| AZTNF - Wildlife / Owl Cores | 1,160 acres | AZTNF | | Unit |
| AZTNF - Wildlife / Owl PACs | 6,532 acres | AZTNF | | Unit |
| AZTNF - Wildlife / SWFL | 393 acres | AZTNF | | Unit |
| AZTNF - Wildlife / SWFL CH | 5,574 acres | AZTNF | | Unit |
| AZTNF - Wildlife / Spikedace CH | 40.8 miles | AZTNF | | Unit |
| AZTNF - Wildlife / THEQ | 349 acres | AZTNF | | Unit |
| AZTNF - Wildlife / THEQ CH | 4,420 acres | AZTNF | | Unit |
| AZTNF - Wildlife / THRU | 155 acres | AZTNF | | Unit |
| AZTNF - Wildlife / THsp Observations | 6 | AZTNF | | Unit |

| Category | Value | Data Source | Currency | Coverage |
|-----------------------------------------|---------------|----------------------------------------------|------------------------------------|------------------------------|
| AZTNF - Wildlife / YBCU | 516 acres | AZTNF | | Unit |
| AZTNF - Wildlife / YBCU CH | 4,417 acres | AZTNF | | Unit |
| Building Clusters: Gila, AZ | 3,413 | Various | Various | Available counties |
| Building Clusters: Maricopa, AZ | 84 | Various | Various | Available counties |
| Building Clusters: Yavapai, AZ | 0 | Various | Various | Available counties |
| Campgrounds | 18 | BLM (FAMS) and USFS INFRA | 6/01/2018 | National (BLM and USFS only) |
| Class 1 Airsheds | 72,248 acres | NPS Air Resources Division | Various | National |
| Communication Towers | 189 | HIFLD | 02/20/2020 | National |
| County: Gila, AZ | 359,625 acres | USFWS ECOS | 2/10/2020 | National |
| County: Maricopa, AZ | 348,183 acres | USFWS ECOS | 2/10/2020 | National |
| County: Yavapai, AZ | 18,668 acres | USFWS ECOS | 2/10/2020 | National |
| Electric Power Plants | 4 | HIFLD Open Data (CONUS,PR), HSIP GOLD(AK,HI) | 06/09/2017 (CONUS,PR), 2015(AK,HI) | National |
| Electric Sub Stations | 6 | HIFLD Open Data (CONUS,PR), HSIP GOLD(AK,HI) | 07/24/2017 (CONUS,PR), 2015(AK,HI) | National |
| Electric Transmission Lines | 118.4 miles | HIFLD Open Data (CONUS,PR), HSIP GOLD(AK,HI) | 07/24/2017 (CONUS,PR), 2015(AK,HI) | National |
| Est Ground Evac Time: 1-2 Hrs | 217,016 acres | National Park Service NIFC | 11/01/2012 | CONUS |
| Est Ground Evac Time: 2-4 Hrs | 203,166 acres | National Park Service NIFC | 11/01/2012 | CONUS |
| Est Ground Evac Time: 4-6 Hrs | 73,995 acres | National Park Service NIFC | 11/01/2012 | CONUS |
| Est Ground Evac Time: 6+ Hrs | 53,081 acres | National Park Service NIFC | 11/01/2012 | CONUS |
| Habitat: Mexican Spotted Owl | 155,722 acres | US Fish and Wildlife Service | 02/01/2020 | National |
| Habitat: Narrow-Headed Gartersnake | 3,200 acres | US Fish and Wildlife Service | 02/01/2020 | National |
| Habitat: Northern Mexican Gartersnake | 4,424 acres | US Fish and Wildlife Service | 02/01/2020 | National |
| Habitat: Southwestern Willow Flycatcher | 5,574 acres | US Fish and Wildlife Service | 02/01/2020 | National |
| Habitat: Spikedace | 40.9 miles | US Fish and Wildlife Service | 02/01/2020 | National |
| Habitat: Yellow-Billed Cuckoo | 4,418 acres | US Fish and Wildlife Service | 02/01/2020 | National |
| IRA: Black Cross Roadless Area | 5,966 acres | USFS | 03/08/2019 | National |
| IRA: Boulder Roadless Area | 40,359 acres | USFS | 03/08/2019 | National |
| IRA: Goldfield Roadless Area | 8,861 acres | USFS | 03/08/2019 | National |
| IRA: Horse Mesa Roadless Area | 9,146 acres | USFS | 03/08/2019 | National |
| IRA: Mazatzal Roadless Area | 1,277 acres | USFS | 03/08/2019 | National |
| IRA: Salome Roadless Area | 2,932 acres | USFS | 03/08/2019 | National |
| Landowner Category: BIA | 28 acres | PAD-US 2.0, AICC, BIA/ WFDSS, Census | 03/12/2020 | National |

| Category | Value | Data Source | Currency | Coverage |
|-------------------------------------------------------------------------------|------------------|-----------------------------------------|------------|----------|
| Landowner Category: NPS | 550 acres | PAD-US 2.0, AICC, BIA/ WFDSS, Census | 03/12/2020 | National |
| Landowner Category: Private | 8,636 acres | PAD-US 2.0, AICC, BIA/ WFDSS, Census | 03/12/2020 | National |
| Landowner Category: USFS | 717,285 acres | PAD-US 2.0, AICC, BIA/ WFDSS, Census | 03/12/2020 | National |
| Natl Scenic Byways | 33.9 miles | NPS | 2/28/2019 | National |
| Natl Scenic Trails | 81.7 miles | National Park Service | 02/20/2020 | National |
| Other Areas: Bush Highway | 479 acres | USGS PADUS 1.4 | 03/13/2019 | National |
| Other Areas: Three-Bar Watersheds Research Area, Plo 3263 | 1,738 acres | USGS PADUS 1.4 | 03/13/2019 | National |
| Other Areas: Usdi Bureau Of Reclamation, Central Arizona Project, Orme Dam | 356 acres | USGS PADUS 1.4 | 03/13/2019 | National |
| Ozone Non-Attainment | 348,678 acres | EPA | 06/05/2012 | National |
| Roads | 164.2 miles | NAVTEQ | 11/2012 | National |
| USFS Buildings | 136 | USFS | 2020 | National |
| Wilderness: Four Peaks Wilderness | 60,735 acres | Wilderness.net | 01/31/19 | National |
| Wilderness: Hellsgate Wilderness | 685 acres | Wilderness.net | 01/31/19 | National |
| Wilderness: Mazatzal Wilderness | 57,974 acres | Wilderness.net | 01/31/19 | National |
| Wilderness: Salome Wilderness | 4,888 acres | Wilderness.net | 01/31/19 | National |
| Wilderness: Superstition Wilderness | 14,288 acres | Wilderness.net | 01/31/19 | National |

Coverage of Values Queried that Produced No Results

BLM Buildings (BLM Lands), BLM Horse and Burro (National), BLM Oil / Gas Leases (National), BLM Range Allotments (National), Mines (National), NPS Buildings (National), NRA (National), Natl Historic Trails (National), Natl Recreation Trails (National), Natl Wild Scenic Rivers (National), Oil and Gas Pipelines (National), Particulates Non-Attainment (National), Protecting Unit (AK, CA, ID, MT, NM, MN), Sage Grouse Habitat (National), TNC Lands (National), USFWS Trails (National), WSA (National)

1.6. Benefits

Benefits

Last updated by Mary Lata on 06/14/2020 01:36



Comments

If this fire is stopped before it reaches vegetation types at higher elevations that could benefit from fire, there will be no beneficial effects.

1.7. Objectives

Incident FMU/Strategic Objective Code List

| Unit | FMU/Strat Obj Code | Acres |
|-------|------------------------------------------------------------------------------|---------|
| AZTNF | 1B - Cave Creek RD Mazatzal Wilderness | 28,468 |
| AZTNF | 1E - Cave Creed RD Horseshoe and Bartlett Recreation Areas | 7,601 |
| AZTNF | 1F - Cave Creek RD General Management Area | 36,621 |
| AZTNF | 3A - Mesa RD Mazatzal Wilderness | 8,371 |
| AZTNF | 3B - Mesa RD Superstition Wilderness (Eastern Half) | 3,203 |
| AZTNF | 3C - Mesa RD Superstition Wilderness (Western Half) | 5,910 |
| AZTNF | 3D - Mesa RD Four Peaks Wilderness | 48,470 |
| AZTNF | 3E - Mesa RD Bush Highway Research Natural Area | 516 |
| AZTNF | 3F - Mesa RD Lower Salt River Recreation Area | 10,169 |
| AZTNF | 3H - Mesa RD Proposed Sycamore Creek and Blue Point Cottonwood Natural Areas | 91 |
| AZTNF | 3I - Mesa RD General Management Area | 180,817 |
| AZTNF | 4A - Payson RD Mazatzal Wilderness | 11,231 |
| AZTNF | 4C - Payson RD Hellsgate Wilderness | 607 |
| AZTNF | 4F - Payson RD General Management Area | 24,082 |
| AZTNF | 5B - Pleasant Valley RD Hellsgate Wilderness | 80 |
| AZTNF | 5D - Pleasant Valley RD Mogollon Rim-Sierra Ancha Area | 6,746 |
| AZTNF | 5G - Pleasant Valley RD General Management Area | 15,658 |
| AZTNF | 6A - Tonto Basin RD Mazatzal Wilderness | 9,777 |
| AZTNF | 6B - Tonto Basin RD Superstition Wilderness | 5,156 |
| AZTNF | 6C - Tonto Basin RD Three Bar Wildlife Area | 22,938 |
| AZTNF | 6D - Tonto Basin RD Buckhorn Mountain Research Natural Area | 2,803 |
| AZTNF | 6E - Tonto Basin RD Haufer Wash Research Natural Area | 752 |
| AZTNF | 6F - Tonto Basin RD Roosevelt and Apache Lakes Recreation Area | 40,096 |
| AZTNF | 6H - Tonto Basin RD Salome Wilderness | 4,884 |
| AZTNF | 6I - Tonto Basin RD Four Peaks Wilderness | 10,267 |
| AZTNF | 6J - Tonto Basin RD General Management Area | 240,283 |
| AZTOP | FMU1 | 550 |

Spatial Fire Planning Inventory

| Category | Value | Data Source | Currency | Coverage |
|----------------------------|---------------|-----------------------------------|------------|----------------------------|
| Aqua Retardant Avoidance | 59,629 acres | USDA FS Enterprise Data Warehouse | 05/01/2019 | National (USFS Units only) |
| Mgmt Req: Recreation Sites | 21 acres | AZTNF | Current | Unit Level |
| Mgmt Req: Sonoran Desert | 311,204 acres | AZTNF | Current | Unit Level |
| Retardant Avoidance | 17,677 acres | USDA FS Enterprise Data Warehouse | 04/2020 | National (USFS Units only) |

Incident Objective List

| Activated | Incident Objective |
|------------|-----------------------------------------------------------------------------------------------------------------------------------------------------------------------------------------------------------------------------------------------------------------------------------------------------------------------------------------------------------------------------------------------------------------------------------------------------------------------------------------------------------------------------------------------------------------------------------------------------------------------------------------------------------------------------------------------------------------------------------------------------------------------------------------------------------------------------------------------------|
| 06/15/2020 | <ul style="list-style-type: none"> Use a risk-based approach to provide for firefighter and emergency responder safety to the Bush wildfire while operating in a COVID-19 environment, being deliberate in committing resources only when there is a reasonable expectation of success in protecting life and critical property and infrastructure as we work towards containment of the fire. Assure that residual risk to first responders is acceptable as we meet the following incident objectives: Closely coordinate with state and county emergency response cooperators and health services to reduce and mitigate risks to public safety from operational and environmental hazards associated with the Bush wildfire and the potential for COVID-19 exposure and transmission to and from the local communities. |

Incident Objective List

| Activated | Incident Objective |
|-----------|--------------------------------------------------------------------------------------------------------------------------------------------------------------------------------------------------------------------------------------------------------------------------------------------------------------------------------------------------------------------------------------------------------------------------------------------------------------------------------------------------------------------------------------------------------------------------------------------------------------------------------------------------------------------------------------------------------------------------------------------------------------------------------------------------------------------------------------------------------------------------------------------------------------------------------------------------------------------------------------------------------------------------------------------------------------------------------------------------------------------------------------------------------------------------------------------------------------------------------------------------------------------------------------------------------------------------------------------------------------------------------------------------------------------------------------------------------------------------------------------------------------------------------------------------------------------------------------------------------------------------------------------------------------------------------------------------------------------------------------------------------------------------------------------------------------------------------------------------------------------------------------------------------------------------------------------------------------------------------|
| | <ul style="list-style-type: none"> • The fire will receive full suppression response using all suppression strategies available to meet incident objectives as described in the pertinent WFDSS decision. The use of fire for resource benefit is not expected during this incident. <ul style="list-style-type: none"> ▪ Minimize fire impacts to residences, commercial properties, critical community infrastructure to reduce the potential for adverse health, social, financial, and economic hardships. These include (but not limited to): ▪ Communities: Ft McDowell, Tonto Basin and Punkin Center ▪ Highways SR-87, SR-188 and Bush HWY ▪ Recreational facilities and areas: Recreation sites along the Bush HWY, Saguaro Lake, Rolls OHV area, 4-Peaks Wilderness, Sugarloaf Recreation area, and Lower Sycamore area. ▪ Trails and Trailheads: Arizona Trail and Cottonwood, Cane Spring, Cline, Mud Spring, Lone Pine, Ballantine, Mills Ridge, Rock Creek, and Sycamore Trailheads. ▪ Diamond and Dos S Ranch ▪ Grazing allotments, permits, and related infrastructure • Minimize to the extent feasible smoke exposure to firefighters, communities, and other affected areas to reduce susceptibility to and consequences from COVID-19 exposure. • Ensure timely and accurate evacuation, fire, and smoke information is distributed to the public, partners, cooperators, affected outfitters and permittees, and state and local elected officials in order to leverage their capacity and expertise, and serve their functional needs and safety. • Provide mechanisms to actively monitor, address, and rapidly share lessons learned when varying COVID-19 implementation protocols interrupt effective and safe wildland fire suppression operations and/or cause conflicts among firefighters and crews. |

Incident Requirement List

| Activated | Incident Requirement |
|------------|----------------------------------------------------------------------------------------------------------------------------------------------------------------------------------------------------------------------------------------------------------------------------------------------------------------------------------------------------------------------------------------------------------------------------------------------------------------------------------------------------------------------------------------------------------------------------------------------------------------------------------------------------------------------------------------------------------------------------------------------------------------------------------------------------------------------------------------------------------------------------------------------------------------------------------------------------------------------------------------------------------------------------------------------------------------------------------------------------------------------------------------------------------------------------------------------------------------------------------------------------------------------------------------------------------------------------------------------------------------------------------------------------------------------------------------------------------------------------------------------------------------------------------------------------------------------------------------------------------------------------------------------------------------------------------------------------------------------------------------------------------------------------------------------------------------------------------------------------------------------------------------------------------------------------------------------------------------------------------------------------------------------------------------------------------------------------------------------------------------------------------------------------------------------------------------------------------------------------------------------------------------------------------------------------------------------------------------------------------------------------------------------------------------------------------------------------------------------------------------------------------------------------------------------------------------------------------------------------------------------------------------------------------------------------------------------------------------------------------------------------------------------------------------------------------------------------------------------------------------------------------------------------------------------------------------------------------------------------------------------------------------------------------------------------------------------------------------------------------------------------------------------------------------------------------------------------------------------------------------------------------------------------------------------------------------------------------------------------------------------------------------------------------------------------------------------------------------------------------------------------------------------------------------------|
| 06/15/2020 | <ul style="list-style-type: none"> • Commit resources only when there is a reasonable expectation of success in protecting life and critical property and infrastructure, encourage innovation and the use of doctrine for local adaptations. • Implement strategies and tactics that commit responders only to operations where and when they will have a reasonable probability of success and under conditions where important values at risk are protected with the least exposure necessary while maintaining relationships with the people we serve. • In light of the ongoing COVID-19 pandemic you are expected to be familiar with and implement to the best of your ability the guidance described within the "Wildland Fire Response Plan COVID-19 Pandemic" as provided by the Southwest Geographic Area. This guidance which includes a variety of Best Management Practices (BMPs) represents a framework of considerations for use by the IMT, assigned resources and other personnel committed to the incident. Given the fact that your IMT will be among the first to implement many of the recommended BMP's, we expect a significant amount of dialogue in order to implement, monitor and adjust as necessary. It is expected that the IMT fully consider the guidance in its day to day operations and discuss the implementation and deviations with the Agency Administrators during the course of the incident. We will stand ready to engage with you and your team to assist and learn from your assignment. We ask your team provide mechanisms to actively monitor, address, and rapidly share lessons learned when varying COVID-19 implementation protocols interrupt effective and safe wildland fire suppression operations and/or cause conflicts among firefighters and crews. • Notify Agency Administrators as soon as possible any possible COVID-19 exposure and isolations. Your team is to closely coordinate with the State of Arizona and/or County health services to reduce and mitigate risks to public safety from operational and environmental hazards associated with the Fire and the potential for COVID-19 exposure or complications. • We are committed to the aggressive management of risk. Please utilize the doctrinal principles for fire suppression. We expect sound rational judgment in the application of strategies and tactics to accomplish the tasks we have given you. There are no resource or facility values that are worth the cost of human life. We do recognize that there are inherent risks that cannot be eliminated. Your task is to minimize those risks and limit our exposure to them, to include minimizing responder exposure to COVID-19 transmission by utilizing risk management in all facets of fire suppression. • Please ensure that all assigned firefighting personnel receive adequate rest and that guidelines are followed. Ensure that the 10 standard orders are followed and adhered to by every firefighter, and that the 18 watch out situations will be continually evaluated through clear concise direction and understanding of assignments and mitigated as needed. • The Planning Area encompasses Federal lands under the jurisdiction of the Tonto National Forest, Tonto National Monument and the Bureau of Land Management (Phoenix District, Lower Sonoran Field Office) as well as State and Private lands within Maricopa, Pinal and Gila counties. |

Strategic Objective List

| Unit | Shape/ FMU | Activated | Strategic Objective |
|-------|---------------|------------|----------------------------------------------------------------------------------------------------------------------------------------------------------------------------------------------------------------------------------------------------------------------------------------------------------------------------------------------------------------------------------------------------------------------------------------------------------------------------------------------------------------------------------------------------------------------------------------------------------------------------------------------------------------------------------------------------------------------------------------------------------------|
| AZTNF | <Unit> | 08/17/2013 | On all Class E or bigger fires, an Interdisciplinary (ID) team will determine the need for fire rehabilitation and resource protection, including the option for assigning a Burned Area Rehabilitation Team (BAER Team). |
| AZTNF | 1B | 05/22/2014 | All suppression efforts will emphasize minimum impact strategies. Use of mechanized equipment for fireline construction is discouraged. Where use is necessary, rehabilitation will be implemented. |
| AZTNF | 1B | 05/22/2014 | All reported wildland fires will receive a strategic fire size-up. Wildland fires meeting locally developed operating guidelines listed below may be managed for resource benefit: <ol style="list-style-type: none"> 1. Fire cause is from a natural ignition 2. Fire does not threaten life, property, public, and firefighter safety. 3. Fire does not threaten fire sensitive cultural resources. 4. ADEQ, Air Quality Division procedures and guidelines for consultation and management of smoke will be implemented. 5. Wildland Fire managed for resource benefit must meet Tonto, Regional, and National fire situation parameters. 6. No site specific resource objective is threatened. |
| AZTNF | 1E | 05/22/2014 | All suppression efforts will emphasize minimum impact strategies. Use of mechanized equipment for fireline construction is discouraged. Where use is necessary, rehabilitation will be implemented. |
| AZTNF | 1E | 05/22/2014 | All reported wildland fires will receive a strategic fire size-up. Wildland fires meeting locally developed operating guidelines listed below may be managed for resource benefit: <ol style="list-style-type: none"> 1. Fire cause is from a natural ignition 2. Fire does not threaten life, property, public, and firefighter safety. 3. Fire does not threaten fire sensitive cultural resources. 4. ADEQ, Air Quality Division procedures and guidelines for consultation and management of smoke will be implemented. 5. Wildland Fire managed for resource benefit must meet Tonto, Regional, and National fire situation parameters. 6. No site specific resource objective is threatened. |
| AZTNF | 1F | 05/22/2014 | All suppression efforts will emphasize minimum impact strategies. Use of mechanized equipment for fireline construction is discouraged. Where use is necessary, rehabilitation will be implemented. |
| AZTNF | 1F | 05/22/2014 | All reported wildland fires will receive a strategic fire size-up. Wildland fires meeting locally developed operating guidelines listed below may be managed for resource benefit: <ol style="list-style-type: none"> 1. Fire cause is from a natural ignition 2. Fire does not threaten life, property, public, and firefighter safety. 3. Fire does not threaten fire sensitive cultural resources. 4. ADEQ, Air Quality Division procedures and guidelines for consultation and management of smoke will be implemented. 5. Wildland Fire managed for resource benefit must meet Tonto, Regional, and National fire situation parameters. 6. No site specific resource objective is threatened. |
| AZTNF | 3A | 08/17/2013 | All suppression efforts will emphasize minimum impact strategies. Use of mechanized equipment for fireline construction is discouraged. Where use is necessary, rehabilitation will be implemented. |
| AZTNF | 3A | 08/17/2013 | All reported wildland fires will receive a strategic fire size-up. Wildland fires meeting locally developed operating guidelines listed below may be managed for resource benefit: <ol style="list-style-type: none"> 1. Fire cause is from a natural ignition 2. Fire does not threaten life, property, public and firefighter safety. 3. Fire does not threaten fire sensitive cultural resources. 4. ADEQ, Air Quality Division procedures and guidelines for consultation and management of smoke will be implemented. 5. Wildland Fire managed for resource benefit must meet Tonto, Regional, and National fire situation parameters. 6. No site specific resource objective is threatened. |
| AZTNF | 3B | 08/17/2013 | All suppression efforts will emphasize minimum impact strategies. Use of mechanized equipment for fireline construction is discouraged. Where use is necessary, rehabilitation will be implemented. |
| AZTNF | 3B | 08/17/2013 | All reported wildland fires will receive a strategic fire size-up. Wildland fires meeting locally developed operating guidelines listed below may be managed for resource benefit: <ol style="list-style-type: none"> 1. Fire cause is from a natural ignition 2. Fire does not threaten life, property, public and firefighter safety. 3. Fire does not threaten fire sensitive cultural resources. 4. ADEQ, Air Quality Division procedures and guidelines for consultation and management of smoke will be implemented. |

Strategic Objective List

| Unit | Shape/ FMU | Activated | Strategic Objective |
|-------|---------------|------------|----------------------------------------------------------------------------------------------------------------------------------------------------------------------------------------------------------------------------------------------------------------------------------------------------------------------------------------------------------------------------------------------------------------------------------------------------------------------------------------------------------------------------------------------------------------------------------------------------------------------------------------------------------------------------------------------------------------------------------------------------------------------|
| | | | <ol style="list-style-type: none"> 5. Wildland Fire managed for resource benefit must meet Tonto, Regional, and National fire situation parameters. 6. No site specific resource objective is threatened. |
| AZTNF | 3C | 08/17/2013 | All suppression efforts will emphasize minimum impact strategies. Use of mechanized equipment for fireline construction is discouraged. Where use is necessary, rehabilitation will be implemented. |
| AZTNF | 3C | 08/17/2013 | <p>All reported wildland fires will receive a strategic fire size-up. Wildland fires meeting locally developed operating guidelines listed below may be managed for resource benefit:</p> <ol style="list-style-type: none"> 1. Fire cause is from a natural ignition 2. Fire does not threaten life, property, public and firefighter safety. 3. Fire does not threaten fire sensitive cultural resources. 4. ADEQ, Air Quality Division procedures and guidelines for consultation and management of smoke will be implemented. 5. Wildland Fire managed for resource benefit must meet Tonto, Regional, and National fire situation parameters. 6. No site specific resource objective is threatened. |
| AZTNF | 3D | 08/17/2013 | All suppression efforts will emphasize minimum impact strategies. Use of mechanized equipment for fireline construction is discouraged. Where use is necessary, rehabilitation will be implemented. |
| AZTNF | 3D | 08/17/2013 | <p>All reported wildland fires will receive a strategic fire size-up. Wildland fires meeting locally developed operating guidelines listed below may be managed for resource benefit:</p> <ol style="list-style-type: none"> 1. Fire cause is from a natural ignition 2. Fire does not threaten life, property, public and firefighter safety. 3. Fire does not threaten fire sensitive cultural resources. 4. ADEQ, Air Quality Division procedures and guidelines for consultation and management of smoke will be implemented. 5. Wildland Fire managed for resource benefit must meet Tonto, Regional, and National fire situation parameters. 6. No site specific resource objective is threatened. |
| AZTNF | 3E | 08/17/2013 | Suppress all fires while considering costs, firefighter risk, and values at risk |
| AZTNF | 3F | 08/17/2013 | <p>All reported wildland fires will receive a strategic fire size-up. Wildland fires meeting locally developed operating guidelines listed below may be managed for resource benefit:</p> <ol style="list-style-type: none"> 1. Fire cause is from a natural ignition 2. Fire does not threaten life, property, public and firefighter safety. 3. Fire does not threaten fire sensitive cultural resources. 4. ADEQ, Air Quality Division procedures and guidelines for consultation and management of smoke will be implemented. 5. Wildland Fire managed for resource benefit must meet Tonto, Regional, and National fire situation parameters. 6. No site specific resource objective is threatened. |
| AZTNF | 3H | 08/17/2013 | Suppress all fires while considering costs, firefighter risk, and values at risk |
| AZTNF | 3I | 08/17/2013 | Prevent Wildland Fire from destroying developed recreation improvements, including a five-chain wide buffer surrounding them. |
| AZTNF | 3I | 08/17/2013 | <p>All reported wildland fires will receive a strategic fire size-up. Wildland fires meeting locally developed operating guidelines listed below may be managed for resource benefit:</p> <ol style="list-style-type: none"> 1. Fire cause is from a natural ignition 2. Fire does not threaten life, property, public and firefighter safety. 3. Fire does not threaten fire sensitive cultural resources. 4. ADEQ, Air Quality Division procedures and guidelines for consultation and management of smoke will be implemented. 5. Wildland Fire managed for resource benefit must meet Tonto, Regional, and National fire situation parameters. 6. No site specific resource objective is threatened. |
| AZTNF | 4A | 05/16/2014 | Wildland Fires occurring in these areas will receive an appropriate management response based on previous, current and projected climatological, and existing fuel conditions. Additional considerations for seasonal differences and fire management resources availability will be addressed. |
| AZTNF | 4A | 05/16/2014 | All suppression efforts will emphasize minimum impact strategies. Use of mechanized equipment for fireline construction is discouraged. Where use is necessary, rehabilitation will be implemented. |
| AZTNF | 4A | 05/16/2014 | Management Emphasis: Manage for wilderness values, wildlife habitats and natural ecological processes while allowing livestock grazing and recreation opportunities that are compatible with maintaining these values and processes. |

| Unit | Shape/ FMU | Activated | Strategic Objective |
|-------|---------------|------------|--------------------------------------------------------------------------------------------------------------------------------------------------------------------------------------------------------------------------------------------------------------------------------------------------------------------------------------------------------------------------------------------------------------------------------------------------------------------------------------------------------------------------------------------------------------------------------------------------------------------------------------------------------------------------------------------------------------------------------------------------------------------------------------------------------------------------------------------------------------------------------------------------------------------------------------------------------------------------------------------------------------------------------------------------------------------------------------------------------------------------------------------------------------------------------------------------------------------------------------------------------------------------------------------------------------------------------------------------------------------------------------------------------------------------------------------------------------------------------------------------------------------------------------------------------------------------------------------|
| | | | Wildland Fire will receive an appropriate management response and be managed consistent with Wilderness resource objectives. Naturally occurring fires may be used to play as nearly as possible their natural ecological role and to reduce unnatural fuel hazards as identified in the Forest Service Manual and approved Wilderness Implementation Plan. |
| AZTNF | 4A | 05/16/2014 | <p>All reported wildland fires will receive a strategic fire size-up. Wildland fires meeting locally developed operating guidelines listed below may be managed for resource benefit.</p> <ol style="list-style-type: none"> 1. Fire cause is from a natural ignition. 2. Fire does not threaten life, property, public and firefighter safety. 3. Fire does not threaten fire sensitive cultural resources. 4. ADEQ, Air Quality Division procedures and guidelines for consultation and management of smoke will be implemented. 5. Wildland Fire managed for resource benefit must meet Tonto, Regional, and National fire situation parameters. 6. No site specific resource objective is threatened. <p>For each wildland fire located in an FMU approved for wildland fire use and naturally ignited, a decision criteria checklist will be prepared to determine whether or not it should be declared a Wildland Fire use candidate. If approved, a Wildland Fire Implementation Plan (WFIP) will be prepared that identifies specific resource concerns.</p> <p>Designated Wildland Fires managed for resource benefit will be monitored according to established guidelines.</p> <p>Wildland Fire suppression actions using accepted fire management tactics will be taken if any of the above parameters are not met. Suppression of fires, or portions thereof, will be undertaken where they adversely affect forest resources, endanger public safety and/or have a potential to damage private lands.</p> |
| AZTNF | 4C | 05/16/2014 | <p>Wildland Fires occurring in these areas will receive an appropriate management response based on previous, current and projected climatological, and existing fuel conditions. Additional considerations for seasonal differences and fire management resources availability will be addressed.</p> <p>All suppression efforts will emphasize minimum impact strategies. Use of mechanized equipment for fireline construction is discouraged. Where use is necessary, rehabilitation will be implemented.</p> |
| AZTNF | 4C | 05/16/2014 | <p>Management Emphasis: Manage for wilderness values, wildlife habitats and natural ecological processes while allowing livestock grazing and recreation opportunities that are compatible with maintaining these values and processes.</p> <p>Wildland Fire will receive an appropriate management response and be managed consistent with Wilderness resource objectives. Naturally occurring fires may be used to play as nearly as possible their natural ecological role and to reduce unnatural fuel hazards as identified in the Forest Service Manual and approved Wilderness Implementation Plan.</p> |
| AZTNF | 4C | 05/16/2014 | <p>All reported wildland fires will receive a strategic fire size-up. Wildland fires meeting locally developed operating guidelines listed below may be managed for resource benefit.</p> <ol style="list-style-type: none"> 1. Fire cause is from a natural ignition. 2. Fire does not threaten life, property, public and firefighter safety. 3. Fire does not threaten fire sensitive cultural resources. 4. ADEQ, Air Quality Division procedures and guidelines for consultation and management of smoke will be implemented. 5. Wildland Fire managed for resource benefit must meet Tonto, Regional, and National fire situation parameters. 6. No site specific resource objective is threatened. <p>For each wildland fire located in an FMU approved for wildland fire use and naturally ignited, a decision criteria checklist will be prepared to determine whether or not it should be declared a Wildland Fire use candidate. If approved, a Wildland Fire Implementation Plan</p> |

| Unit | Shape/ FMU | Activated | Strategic Objective |
|-------|---------------|------------|-----------------------------------------------------------------------------------------------------------------------------------------------------------------------------------------------------------------------------------------------------------------------------------------------------------------------------------------------------------------------------------------------------------------------------------------------------------------------------------------------------------------------------------------------------------------------------------------------------------------------------------------------------------------------------------------------------------------------------------------------------------------------------------------------------------------------------------------------------------------------------------------------------------------------------------------------------------------------------------------------------------------------------------------------------------------------------------------------------------------------------------------------------------------------------------------------------------------------------------------------------------------------------------------------------------------------------------------------------------------------------------------------------------------------------------------------------------------------------------------------------------------------------------------------------------------------------------------------------------------------------------------------------------------------------------------------------------------------------------------------------------------------------------------------------------------------------|
| AZTNF | 4F | 05/16/2014 | <p>(WFIP) will be prepared that identifies specific resource concerns. Designated Wildland Fires managed for resource benefit will be monitored according to established guidelines.</p> <p>Wildland Fire suppression actions using accepted fire management tactics will be taken if any of the above parameters are not met. Suppression of fires, or portions thereof, will be undertaken where they adversely affect forest resources, endanger public safety and/or have potential to damage private lands.</p> <p>Management Emphasis: Manage for a variety of renewable natural resources with primary emphasis on wildlife habitat improvement, livestock forage production, and dispersed recreation. Watersheds will be managed so as to improve them to a satisfactory or better condition. Improve and manage the included riparian areas (as defined by FSM 2526) to benefit riparian dependent resources.</p> <p>Wildland Fires will be managed consistent with resource objectives. Wildland Fire not meeting management objectives will receive an appropriate suppression response. Fire management objectives for this area include:</p> <ul style="list-style-type: none"> • providing a mosaic of age classes within the total type which will provide for a mix of successional stages, and • allow fire to resume its natural ecological role within ecosystems. Wildland Fires or portions thereof will be suppressed when they adversely affect forest resources, endanger public safety, or have a potential to damage significant capital investments. <p>Sonoran Desert and Riparian vegetative types will be protected from fire except where separate burn plans have identified an ecological need.</p> |
| AZTNF | 4F | 05/16/2014 | <p>Wildland Fire occurring within the Sonoran Desert and riparian communities will receive an appropriate management response. Suppression strategy is to minimize damage within this ecosystem.</p> <p>All reported wildland fires will receive a strategic fire size-up. Wildland fires meeting locally developed operating guidelines listed below may be managed for resource benefit.</p> <ol style="list-style-type: none"> 1. Fire cause is from a natural ignition. 2. Fire does not threaten life, property, public and firefighter safety. 3. Fire does not threaten fire sensitive cultural resources. 4. ADEQ, Air Quality Division procedures and guidelines for consultation and management of smoke will be implemented. 5. Wildland Fire managed for resource benefit must meet Tonto, Regional, and National fire situation parameters. 6. No site specific resource objective is threatened. <p>For each wildland fire located in an FMU approved for wildland fire use and naturally ignited, a decision criteria checklist will be prepared to determine whether or not it should be declared a Wildland Fire use candidate. If approved, a Wildland Fire Implementation Plan (WFIP) will be prepared that identifies specific resource concerns.</p> <p>Designated Wildland Fires managed for resource benefit will be monitored according to established guidelines.</p> <p>Wildland Fire suppression actions using accepted fire management tactics will be taken if any of the above parameters are not met. Suppression of fires, or portions thereof, will be undertaken where they adversely affect forest resources, endanger public safety and/or have a potential to damage private lands.</p> |
| AZTNF | 4F | 05/16/2014 | <p>Prevent Wildland Fire from destroying developed recreation improvements, including a five chain wide buffer surrounding them.</p> |
| AZTNF | 5B | 05/16/2014 | <p>Wildland Fires occurring in these areas will receive an appropriate management response based on previous, current and projected climatological, and existing fuel conditions. Additional considerations for seasonal differences and fire management resources availability will be addressed.</p> <p>All suppression efforts will emphasize minimum impact strategies. Use of mechanized equipment for fireline construction is discouraged. Where use is necessary, rehabilitation will be implemented.</p> |
| AZTNF | 5B | 05/16/2014 | <p>Management Emphasis: Manage for wilderness values, wildlife habitats and natural ecological processes while allowing livestock grazing and recreation opportunities that are compatible with maintaining these values and processes.</p> |

| Unit | Shape/ FMU | Activated | Strategic Objective |
|-------|---------------|------------|--------------------------------------------------------------------------------------------------------------------------------------------------------------------------------------------------------------------------------------------------------------------------------------------------------------------------------------------------------------------------------------------------------------------------------------------------------------------------------------------------------------------------------------------------------------------------------------------------------------------------------------------------------------------------------------------------------------------------------------------------------------------------------------------------------------------------------------------------------------------------------------------------------------------------------------------------------------------------------------------------------------------------------------------------------------------------------------------------------------------------------------------------------------------------------------------------------------------------------------------------------------------------------------------------------------------------------------------------------------------------------------------------------------------------------------------------------------------------------------------------------------------------------------------------------------------------------------------------------------------------------------------------------------------------------------------------------------------------------------------------------------------------------------------------------------------------------------------------------------------------------------------------------------------------------------------------------|
| AZTNF | 5B | 05/16/2014 | <p>Wildland Fire will receive an appropriate management response and be managed consistent with Wilderness resource objectives. Naturally occurring fires may be used to play as nearly as possible their natural ecological role and to reduce unnatural fuel hazards as identified in the Forest Service Manual and approved Wilderness Implementation Plan.</p> <p>All reported wildland fires will receive a strategic fire size-up. Wildland fires meeting locally developed operating guidelines listed below may be managed for resource benefit.</p> <ol style="list-style-type: none"> 1. Fire cause is from a natural ignition. 2. Fire does not threaten life, property, public and firefighter safety. 3. Fire does not threaten fire sensitive cultural resources. 4. ADEQ, Air Quality Division procedures and guidelines for consultation and management of smoke will be implemented. 5. Wildland Fire managed for resource benefit must meet Tonto, Regional, and National fire situation parameters. 6. No site specific resource objective is threatened. <p>For each wildland fire located in an FMU approved for wildland fire use and naturally ignited, a decision criteria checklist will be prepared to determine whether or not it should be declared a Wildland Fire use candidate. If approved, a Wildland Fire Implementation Plan (WFIP) will be prepared that identifies specific resource concerns. Designated Wildland Fires managed for resource benefit will be monitored according to established guidelines.</p> <p>Wildland Fire suppression actions using accepted fire management tactics will be taken if any of the above parameters are not met. Suppression of fires, or portions thereof, will be undertaken where they adversely affect forest resources, endanger public safety and/or have a potential to damage private lands.</p> |
| AZTNF | 5D | 05/16/2014 | <p>Management Emphasis: Manage for a variety of renewable resource outputs with primary emphasis on intensive, sustained yield timber management, timber resource protection, creation of wildlife habitat diversity, increased populations of emphasis harvest species, and recreation opportunity. Timber harvesting methods and timing will include improvement of wildlife habitat quality and watershed condition, and will consider impacts on intensive range and recreation management. Mining activities are authorized in conformance with existing laws and regulations. Visual quality protection will be emphasized in the area (analysis area 5542) of the Highline Trail, a National Recreation Trail.</p> <p>Wildland Fires will be managed consistent with resource objectives. Wildland Fires will be managed with an appropriate suppression response. Fire management objectives for this area include:</p> <ul style="list-style-type: none"> • providing a mosaic of age classes within the total type which will provide for a mix of successional stages, and • allow fire to resume its natural ecological role within ecosystems. Wildland Fires or portions thereof, will be suppressed when they adversely affect forest resources, endanger public safety, or have a potential to damage significant capital investments. |
| AZTNF | 5D | 05/16/2014 | <p>All reported wildland fires will receive a strategic fire size-up. Wildland fires meeting locally developed operating guidelines listed below may be managed for resource benefit.</p> <ol style="list-style-type: none"> 1. Fire cause is from a natural ignition. 2. Fire does not threaten life, property, public and firefighter safety. 3. Fire does not threaten fire sensitive cultural resources. 4. ADEQ, Air Quality Division procedures and guidelines for consultation and management of smoke will be implemented. 5. Wildland Fire managed for resource benefit must meet Tonto, Regional, and National fire situation parameters. 6. No site specific resource objective is threatened. <p>For each wildland fire located in an FMU approved for wildland fire use and naturally ignited, a decision criteria checklist will be prepared to determine whether or not it should be declared a Wildland Fire use candidate. If approved, a Wildland Fire Implementation Plan (WFIP) will be prepared that identifies specific resource concerns. Designated Wildland Fires managed for resource benefit will be monitored according to established guidelines.</p> <p>Wildland Fire suppression actions using accepted fire management tactics will be taken if any of the above parameters are not met. Suppression of fires, or portions thereof, will be undertaken where they adversely affect forest resources, endanger public safety and/or</p> |

| Unit | Shape/ FMU | Activated | Strategic Objective |
|-------|---------------|------------|---------------------------------------------------------------------------------------------------------------------------------------------------------------------------------------------------------------------------------------------------------------------------------------------------------------------------------------------------------------------------------------------------------------------------------------------------------------------------------------------------------------------------------------------------------------------------------------------------------------------------------------------------------------------------------------------------------------------------------------------------------------------------------------------------------------------------------------------------------------------------------------------------------------------------------------------------------------------------------------------------------------------------------------------------------------------------------------------------------------------------------------------------------------------------------------------------------------------------------------------------------------------------------------------------------------------------------------------------------------------------------------------------------------------------------------------------------------------------------------------------------------------------------------------------------------------------------------------------|
| | | | have a potential to damage private lands. |
| AZTNF | 5D | 05/16/2014 | Prevent Wildland Fire from destroying developed recreation improvements. |
| AZTNF | 5G | 05/16/2014 | <p>Management Emphasis: Manage for a variety of renewable natural resources with primary emphasis on wildlife habitat improvement, livestock forage production, and dispersed recreation. Watersheds will be managed so as to improve them to a satisfactory or better condition. Improve and manage the included riparian areas (as defined by FSM 2526) to benefit riparian dependent resources.</p> <p>Wildland Fires will be managed consistent with resource objectives. Wildland Fire will be managed with an appropriate suppression response. Fire management objectives for this area include:</p> <ul style="list-style-type: none"> • providing a mosaic of age classes within the total type which would provide for a mix of successional stages, and • allow fire to resume its natural ecological role within ecosystems. Wildland Fires or portions thereof, will be suppressed when they adversely affect forest resources, endanger public safety or have a potential to damage capital investments. |
| AZTNF | 5G | 05/16/2014 | <p>All reported wildland fires will receive a strategic fire size-up. Wildland fires meeting locally developed operating guidelines listed below may be managed for resource benefit.</p> <ol style="list-style-type: none"> 1. Fire cause is from a natural ignition. 2. Fire does not threaten life, property, public and firefighter safety. 3. Fire does not threaten fire sensitive cultural resources. 4. ADEQ, Air Quality Division procedures and guidelines for consultation and management of smoke will be implemented. 5. Wildland Fire managed for resource benefit must meet Tonto, Regional, and National fire situation parameters. 6. No site specific resource objective is threatened. <p>For each wildland fire located in an FMU approved for wildland fire use and naturally ignited, a decision criteria checklist will be prepared to determine whether or not it should be declared a Wildland Fire use candidate. If approved, a Wildland Fire Implementation Plan (WFIP) will be prepared that identifies specific resource concerns. Designated Wildland Fires managed for resource benefit will be monitored according to established guidelines.</p> <p>Wildland Fire suppression actions using accepted fire management tactics will be taken if any of the above parameters are not met. Suppression of fires, or portions thereof, will be undertaken where they adversely affect forest resources, endanger public safety and/or have a potential to damage private lands.</p> |
| AZTNF | 6F | 09/05/2013 | Resource benefit optional - management of fire for resource benefits can be considered |
| AZTNF | 6F | 09/05/2013 | For each wildland fire located in an FMU approved for wildland fire use and naturally ignited, a decision criteria checklist will be prepared to determine whether or not it should be declared a Wildland Fire use candidate. |
| AZTNF | 6F | 09/05/2013 | <p>All reported wildland fires will receive a strategic fire size-up. Wildland fires meeting locally developed operating guidelines listed below may be managed for resource benefit:</p> <ol style="list-style-type: none"> 1. Fire cause is from a natural ignition 2. Fire does not threaten life, property, public and firefighter safety. 3. Fire does not threaten fire sensitive cultural resources. 4. ADEQ, Air Quality Division procedures and guidelines for consultation and management of smoke will be implemented. 5. Wildland Fire managed for resource benefit must meet Tonto, Regional, and National fire situation parameters. 6. No site specific resource objective is threatened. |
| AZTNF | 6F | 09/05/2013 | Designated Wildland Fires managed for resource benefit will be monitored according to established guidelines. |
| AZTNF | 6F | 09/05/2013 | Suppression of fires, or portions thereof, will be undertaken where they adversely affect forest resources, endanger public safety and/or have a potential to damage private lands |
| AZTNF | 6J | 09/05/2013 | All reported wildland fires will receive a strategic fire size-up. Wildland fires meeting locally developed operating guidelines listed below may be managed for resource benefit: |

Strategic Objective List

| Unit | Shape/FMU | Activated | Strategic Objective |
|-------|-----------|------------|----------------------------------------------------------------------------------------------------------------------------------------------------------------------------------------------------------------------------------------------------------------------------------------------------------------------------------------------------------------------------------------------------------------------------------------------------------------------------------------------------------------------------------------------------------------------------|
| | | | <ol style="list-style-type: none"> 1. Fire cause is from a natural ignition 2. Fire does not threaten life, property, public and firefighter safety. 3. Fire does not threaten fire sensitive cultural resources. 4. ADEQ, Air Quality Division procedures and guidelines for consultation and management of smoke will be implemented. 5. Wildland Fire managed for resource benefit must meet Tonto, Regional, and National fire situation parameters. 6. No site specific resource objective is threatened. |
| AZTNF | 6J | 09/05/2013 | Designated Wildland Fires managed for resource benefit will be monitored according to established guidelines. |
| AZTNF | 6J | 09/05/2013 | For each wildland fire located in an FMU approved for wildland fire use and naturally ignited, a decision criteria checklist will be prepared to determine whether or not it should be declared a Wildland Fire use candidate. |
| AZTNF | 6J | 09/05/2013 | Suppression of fires, or portions thereof, will be undertaken where they adversely affect forest resources, endanger public safety and/or have a potential to damage private lands |
| AZTOP | <Unit> | 05/27/2020 | Provide for public, employee and firefighter safety |

Management Requirement List

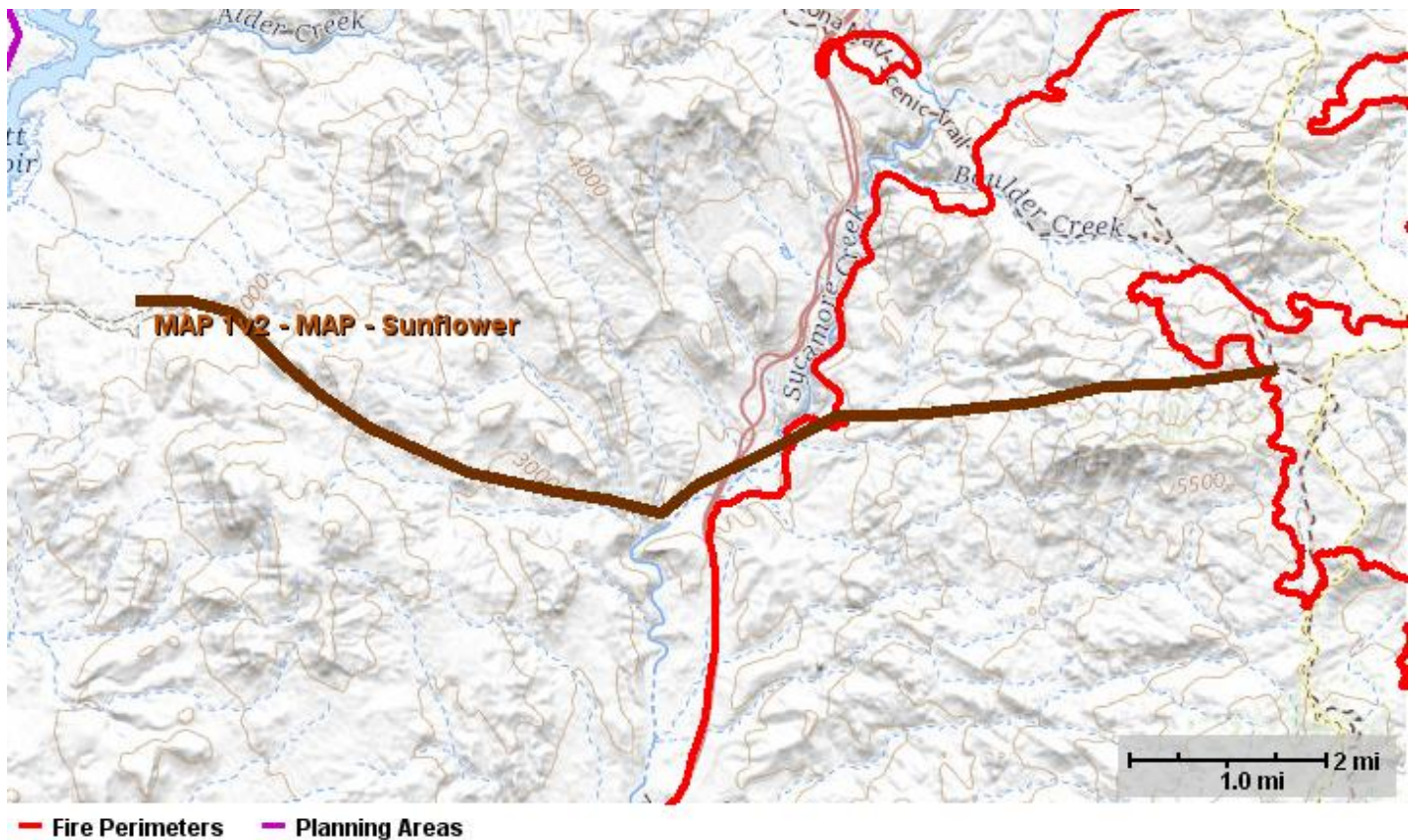
| Unit | Shape/FMU | Activated | Management Requirement |
|-------|--------------------------|------------|-------------------------------------------------------------------------------------------------------------------------------------------------------------------------------------------------------------------------------------------------------------------------------------------------------------------------------------------------------------------------------------------------------------------------------------------------------------------------------------------------------------------------------------------------------------------------------------------------------------------|
| | Aqua Retardant Avoidance | 06/18/2013 | The aerial application of fire retardant is allowed for fighting fires. Aerially delivered fire retardant should not be applied to any mapped aquatic avoidance area, waterway or buffer. The only exception to using aerially applied fire retardant in avoidance areas is for the protection of human life or public safety . The Incident Commander is the decision maker. Information concerning the Record of Decision for the Aerial Application of Fire Retardant is available at https://www.fs.fed.us/fire/retardant/index.html |
| | Retardant Avoidance | 05/31/2012 | The aerial application of fire retardant is allowed for fighting fires. Aerially delivered fire retardant should not be applied to any mapped terrestrial avoidance area, waterway or buffer. The only exception to using aerially applied fire retardant in avoidance areas is for the protection of human life or public safety . The Incident Commander is the decision maker. Information concerning the Record of Decision for the Aerial Application of Fire Retardant is available at https://www.fs.fed.us/fire/retardant/index.html |
| AZTNF | <Unit> | 08/17/2013 | Management activities will be planned so that air quality will equal to or better than that required by applicable Federal, State, and local standards or regulations. |
| AZTNF | <Unit> | 09/05/2013 | Wildland Fires threatening the Wildland/Urban Interface will have high suppression priority |
| AZTNF | Recreation Sites | 09/05/2013 | Prevent Wildland Fire from destroying developed recreation improvements, including a five-chain wide buffer surrounding them. |
| AZTNF | Sonoran Desert | 09/05/2013 | Wildland Fire occurring within the Sonoran Desert and riparian communities will receive an appropriate management response. Suppression strategy is to minimize damage within this ecosystem. |
| AZTOP | <Unit> | 05/27/2020 | <p>COVID-19</p> <ul style="list-style-type: none"> • Refer to the "Southwest Wildland Fire Response Plan COVID-19 (SW WFRP)" for guidance and considerations in maintaining continuity of operations in the presence of the COVID-19 pandemic. • Coordinate with Agency, State, County, and Municipal Public Health offices as necessary to ensure firefighter and public health. |
| AZTOP | <Unit> | 05/27/2020 | Contain wildfires at smallest size consistent with firefighter and public safety using the appropriate suppression response |
| AZTOP | <Unit> | 05/27/2020 | Protect natural and cultural resources from fire and suppression damage |
| AZTOP | <Unit> | 05/27/2020 | Protect park and adjacent infrastructure from fire and suppression damage |
| AZTOP | <Unit> | 05/27/2020 | Provide structure protection and defensible space utilizing Fire-Wise standards |

1.8. Course of Action

Course of Action

| Active | Inactive | Action Item |
|------------|----------|--------------------------------------------------------------------------------------------------------------------------------------------------------------------------------------------------------------------------------------------------------------------------------------------------------------------------------------------------------------------------------------------------------------------------------------------------------------------------------------------------------------------------------------------------------------------------------------------------------------------------------------------------------------------------------------------------------------------------------------------------------------------------------------------------------------------------------------------------------------------------------------------------------------------------------------------------------------------------------------------------------------------------------------------------------------------------------------------------------------------------------------------------------------------------------------------------------------------------|
| 06/15/2020 | | <ul style="list-style-type: none"> • Firefighter and public safety remains priority over all other incident objectives and requirements. Include appropriate COVID 19 mitigation measures for firefighters, overhead team staff and others to minimize health impacts. • Make reasonable, prudent and timely risk-based decisions to accomplish specific fire suppression, monitoring and/or other management actions while minimizing exposure to hazards. Specific hazards to be aware of on this incident include steep terrain, flammable fuels, extreme air temperatures, extended burn periods, and low RH values during the burning period. • Consider smoke impacts to the public, natural/cultural resources and infrastructure values as well as to social and economic values when developing strategic planning efforts and the opportunities to mitigate the smoke impacts. • Maintain timely communications with all agencies, cooperators and landowners. Coordinate closures (roads, trails, recreation areas) and evacuations with the appropriate officials and communicate those closures/evacuations in a timely fashion with the public and stakeholders. |

Management Action Point 1v2



| NAME | VALUE |
|---------------|-----------------|
| Incident Name | Bush |
| Cost | \$250,000 |
| Shape | MAP - Sunflower |
| Activated | 06/18/2020 |
| Deactivated | |
| Status | Active |

Condition

MAP Description: The location of this MAP is along Log Corral Canyon from the west to east until it meets SR-87 and then continues along the FS104 north of boulder mountain where it connects with FS422.

Intent: If fire becomes established west of SR87 or threatens this MAP. Notify the Power company (APS), landowners on the private land adjacent to Forest. The intent of this MAP is to protect APS powerlines and pre-evac notifications for Sunflower Estates, Diamond

Ranch and Cross F Ranch.

Values at Risk:

Probability: 80-100% Very High (Determined from FS PRO)

- APS - KV Powerlines
- Private structures (Sunflower, Jake's Corner)
- Ord Lookout and Communications site
- Ord mountain private inholdings
- Cultural resources
- T&E Species
- Forest Service infrastructure

Actions

Notifications:

Recommended Management Action:

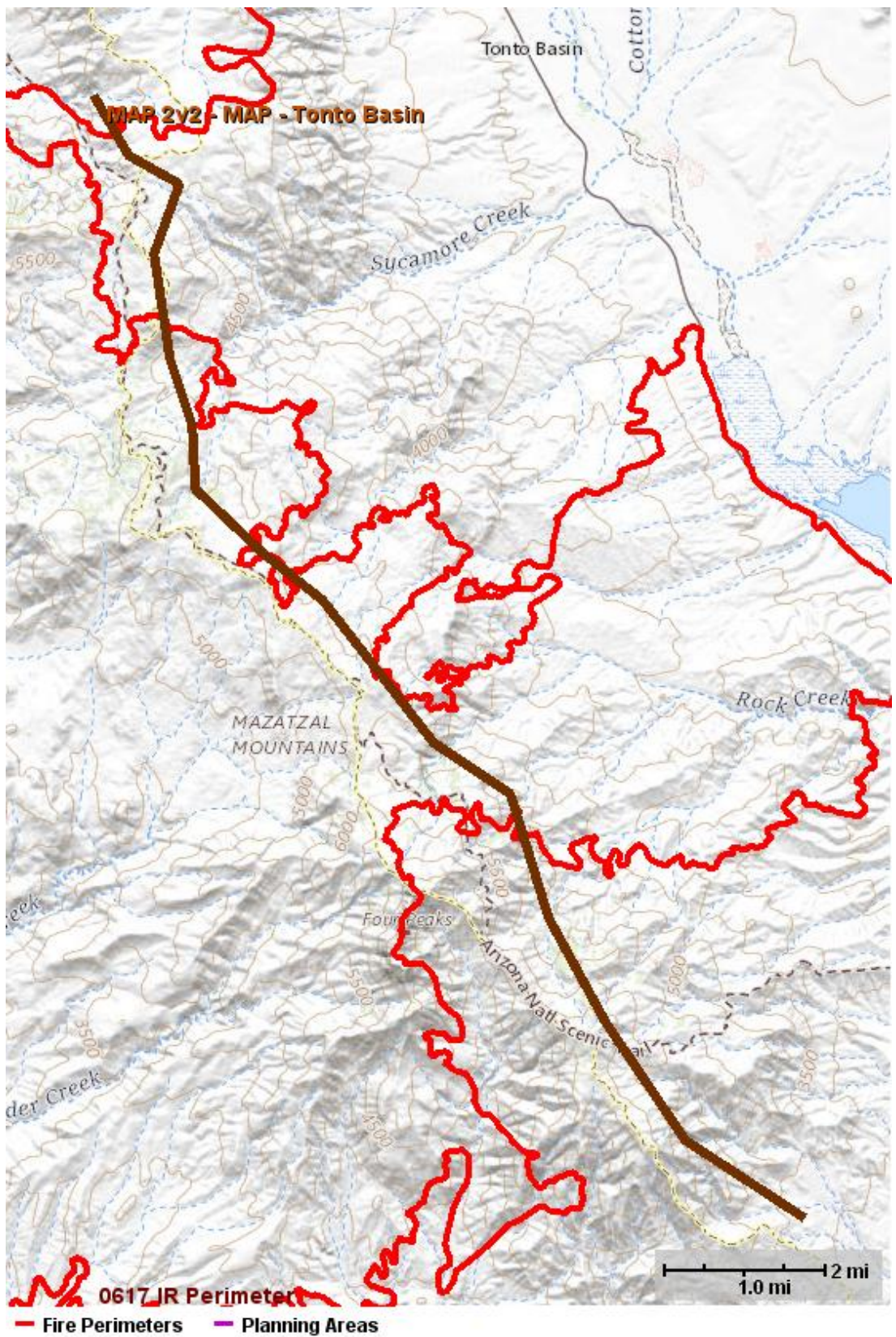
- Forest Agency Administrators and Fire Managers
- DPS
- APS
- Gila and Maricopa Counties
- Sunflower Estates
- Diamond Ranch
- Cross F Ranch
- Mt. Ord Communication Site User Associations
- Consider pre-evac notifications or evacuations of private lands and ranches to the North of the fire (dependent on fire Fire weather and behavior in conjunction with suppression efforts).
- Consider prepping powerlines with APS.
- Consider prepping and planning for burnout operations around Mt. Ord Communication sites.
- Evaluate current planning area and IMT organization

Resources

Recommended:

- Consider ordering more resources (Engines, Handcrews, Equipment and Aviation)

Management Action Point 2v2



| NAME | VALUE |
|---------------|-------------------|
| Incident Name | Bush |
| Cost | \$800,000 |
| Shape | MAP - Tonto Basin |
| Activated | 06/18/2020 |

Deactivated
Status Active

Condition

MAP Description: The location of this MAP is north of Edwards Peak moving south on the east side of FS422 continuing all the way to Apache Lake.

Intent: If fire becomes established east of FS422 or threatens this MAP. Consider pre-evac and evacuation notices for Tonto Basin area and Punkin Center.

Values at Risk:

Probability: 80-100% Very High (Determined from FS PRO)

- Tonto Basin and Punkin Center communities
- Private structures
- Communications sites
- Cultural resources
- T&E Species
- Forest Service infrastructure

Actions

Notifications:

Recommended Management Action:

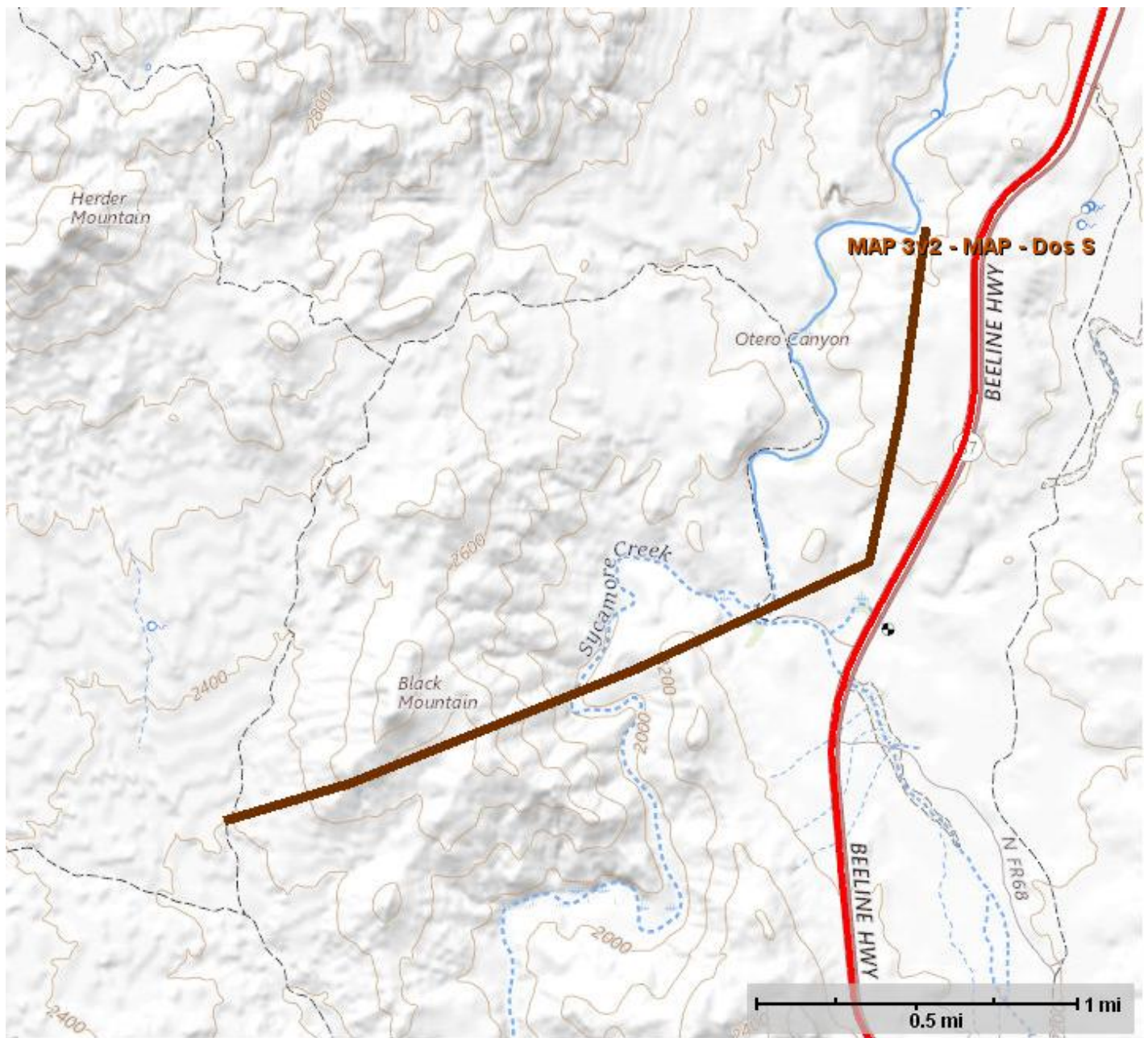
- Forest Agency Administrators and Fire Managers
- DPS and APS
- Gila County Sherriff
- Maricopa County Sherriff for Apache Lake and SR88
- Arizona Department of Transportation
- Apache Lake Marina (If threatening Apache Lake.
- Consider pre-evac notifications or evacuations of Tonto Basin, Punkin Center communities and surrounding areas (dependent on Fire weather and behavior in conjunction with suppression efforts).
- Consider indirect attack and aviation suppression options to reduce fire impacts into Tonto Basin
- Evaluate current planning area and IMT organization

Resources

Recommended:

- Consider ordering more resources (Engines, Handcrews, Equipment and Aviation)

Management Action Point 3v2



— Fire Perimeters — Planning Areas

| NAME | VALUE |
|---------------|-------------|
| Incident Name | Bush |
| Cost | \$100,000 |
| Shape | MAP - Dos S |
| Activated | 06/18/2020 |
| Deactivated | |
| Status | Active |

Condition

MAP Description: The location of this MAP is south of the Dos S ranch on the West side of SR87 moving west to Black Mountain.

Intent: If fire becomes established west of FS87 or threatens this MAP south of the Dos S ranch. Consider evacuation of Dos S ranch.

Values at Risk:

Probability: 80-100% Very High (Determined from FS PRO)

- Dos S ranch
- Private structures
- Cultural resources

Actions

Notifications:

Recommended Management Action:

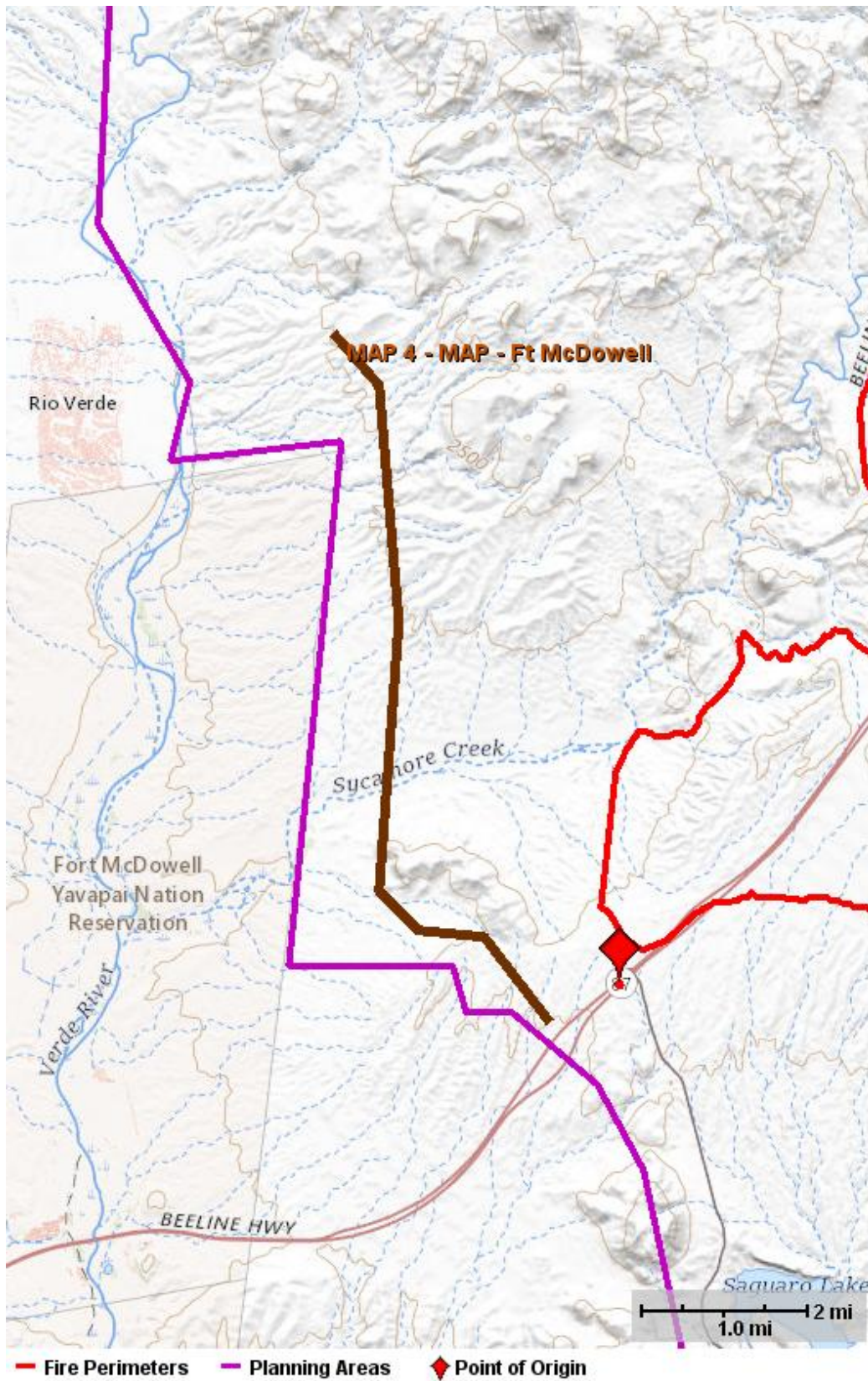
- Forest Agency Administrators and Fire Managers
- Notifying DPS
- Dos S Ranch
- Notify and consider evacuations for Dos S ranch.
- Consider indirect attack and aviation suppression in areas that would slow or stop fire and allow ground crews to suppress.
- Evaluate current planning area and IMT organization.

Resources

Recommended:

- Consider ordering more resources (Engines, Handcrews, Equipment and Aviation)

Management Action Point 4



| NAME | VALUE |
|---------------|-------------------|
| Incident Name | Bush |
| Cost | \$100,000 |
| Shape | MAP - Ft McDowell |

| | |
|-------------|------------|
| Activated | 06/15/2020 |
| Deactivated | |
| Status | Active |

Condition

MAP Description: The location of this MAP is west of the fire traveling north to south just east of the Ft. McDowell Yavapai Nation.

Intent: If fire crosses or threatens the MAP, notify Ft. McDowell Agency Administrators and Fire Managers.

Values at Risk:

Probability: .2-4.9% Very Low (Determined from FS PRO)

- Communities of Ft. McDowell, Fountain Hills and other private inholdings

Actions

Notifications:

Recommended Management Action:

- Forest Agency Administrators and Fire Managers
- McDowell (BIA) Agency Administrators and Fire Managers
- Notifying DPS
- Private lands and communities
- Consider pre-evac notifications Private inholdings along SR87, Ft McDowell and surrounding areas near Fountain Hills. (dependent on fire Fire weather and behavior in conjunction with suppression efforts).
- Consider indirect attack options to reduce fire impacts to the Verde River and riparian areas.
- Evaluate current planning area and IMT organization

Resources

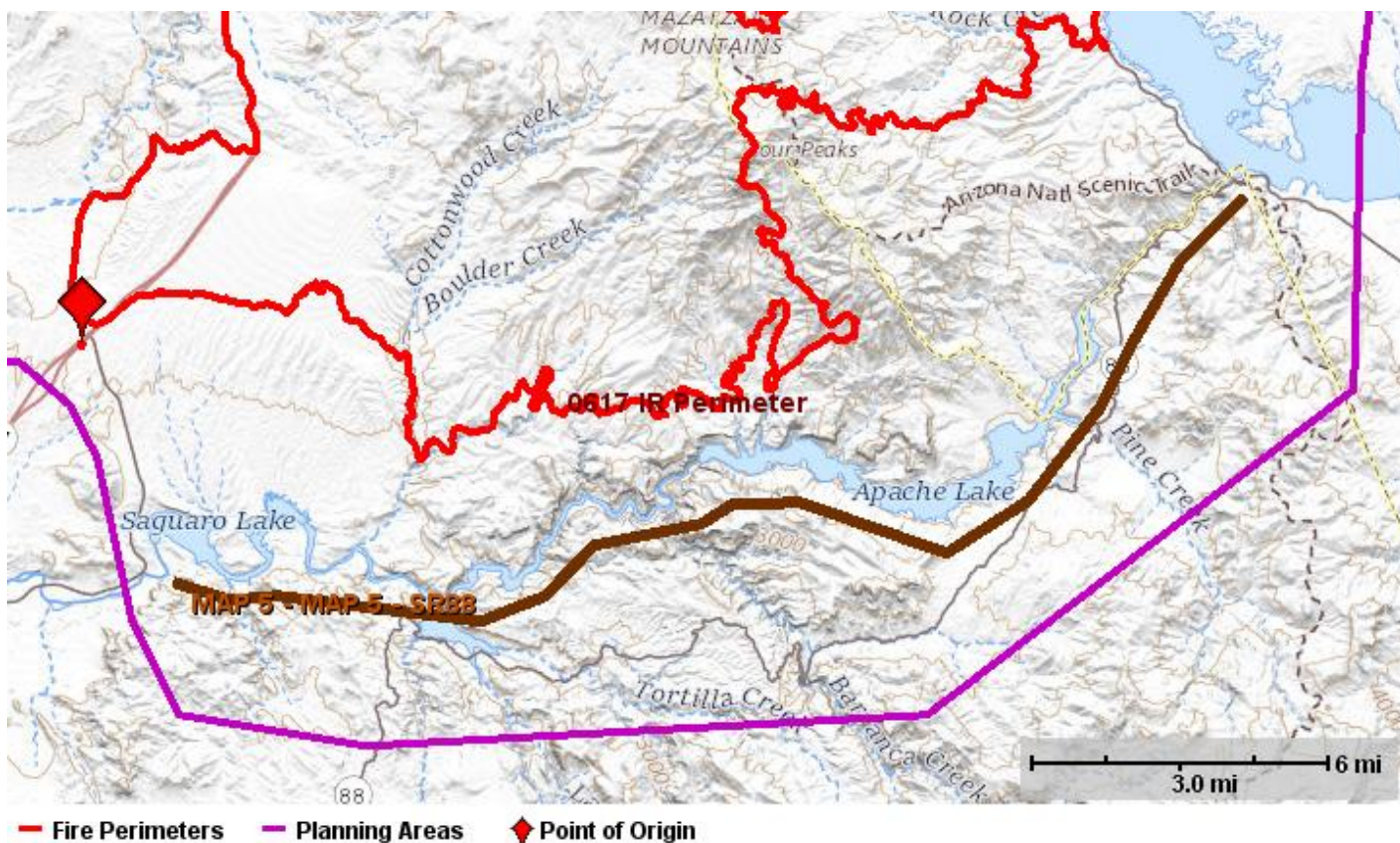
Recommended:

- Consider ordering more resources (Engines, Handcrews, Equipment and Aviation)

Annotations

| Time (CDT) | User | Note |
|------------------|-----------------|-------------------------------------------------------------------|
| 06/18/2020 12:19 | Taylor, CorDell | FSPRO was based off the initial runs from IA and extended attack. |

Management Action Point 5



| NAME | VALUE |
|---------------|--------------|
| Incident Name | Bush |
| Cost | \$500,000 |
| Shape | MAP 5 - SR88 |
| Activated | 06/18/2020 |
| Deactivated | |
| Status | Active |

Condition

MAP Description: This MAP is located south of Saguaro Lake and travels west to east from the Salt River near Bush Highway to SR188 cutting across Canyon Lake and then stays south of the Salt River and Apache Lake until it reaches Theodore Roosevelt Lake to the east.

Intent: If fire crosses or threatens the MAP, consider closure of SR88 and spur roads that access the Salt River corridor. Multiple recreational sites and marina's at Saguaro, Canyon and Apache Lake.

Values at Risk:

Probability: 80-100% Very High (Determined from FS PRO) and .2-80% on the ends of the MAP as the likelihood of spotting is low

- Numerous facilities and recreational sites along SR88
- Highway Dept. facilities
- Roosevelt estates
- Roosevelt Lake View trailer park
- Cross P Ranch
- SRP KV Powerlines
- SRP substation
- FS Roosevelt Visitor Center and Work Center
- SRP lands (wood poles)
- Roosevelt Marina store
- Blackbrush HQ Ranch
- Tonto National Monument
- Recreational Users on the Forest (This is a large area with lots of roads and not many ways in or out.)
- Livestock
- T&E (Southwestern Willow Flycatcher, Garter Snakes and Fish)
- Sonoran Desert

- Structural Range Improvements
- Watershed and future flooding issues
- Superstition Wilderness Area

Actions

Notifications:

Recommended Management Action:

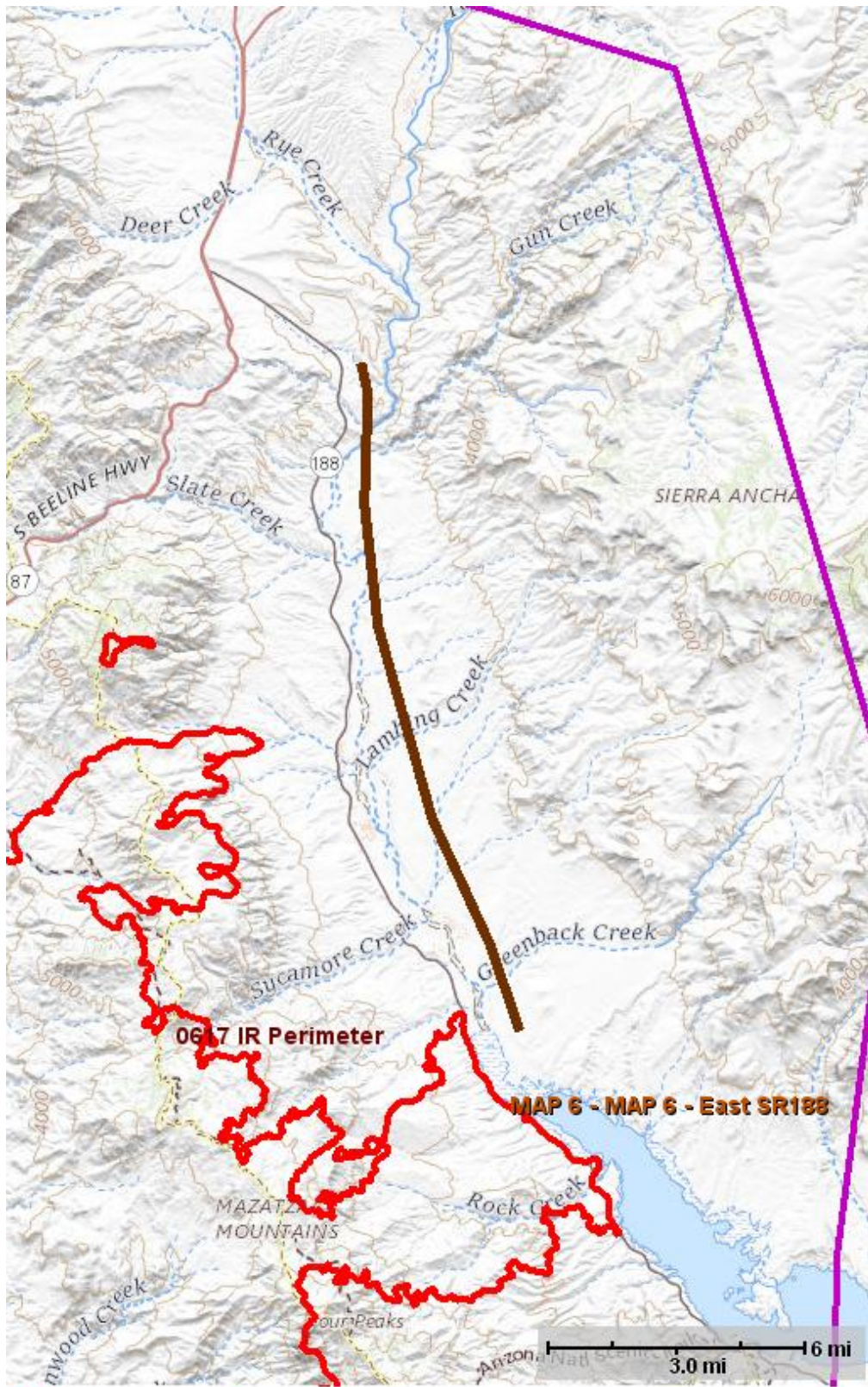
- Forest Agency Administrators and Fire Managers
- DPS (ADOT) & APS
- Gila and Maricopa County Sherriff's
- State of Arizona Dept of Forestry and Fire
- Recreational sites along SR88
- Private residents and ranches
- National Park Service Agency Administrators
- Consider closure of SR88
- Consider closures of recreational sites and facilities along SR88 and the Salt River, Apache, Canyon and Saguaro Lakes
- Consider pre-evac notifications Private inholdings along SR188 south of Theodore Roosevelt Lake Dam (dependent on fire weather and behavior in conjunction with suppression efforts).
- Consider indirect attack options to reduce fire impacts to the Salt River and riparian areas.
- Consider expanding the existing closure area of the Bush fire.

Resources

Recommended:

- Consider Branching existing organization
- Consider ordering more resources (Engines, Handcrews, Equipment and Aviation)
- Consider ordering more Law Enforcement and road guards

Management Action Point 6



— Fire Perimeters — Planning Areas

| NAME | VALUE |
|---------------|--------------------|
| Incident Name | Bush |
| Cost | |
| Shape | MAP 6 - East SR188 |
| Activated | 06/18/2020 |

Deactivated
Status Active

Condition

MAP Description: This MAP is located on the east side of SR188 and travels from Jakes Corner south to Theodore Roosevelt Lake.

Intent: If fire crosses or threatens the MAP, consider evacuations of private inholdings and communities east of SR188

Values at Risk:

Probability: (Determined from FS PRO)

- Bouquet Ranch
- Lower Greenback Creek properties.
- Greenback Valley Inholdings
- Browns, Payson Concrete, Forest Gresley, Troy Neal, James Weidenbener (DelShay Ranch), Jakes Corner,
- Properties along Rye Creek
- Deer Creek
- Transfer Station and power lines
- Town of Gisela
- Recreational Users on the Forest (This is a large area with lots of roads and not many ways in or out.)
- Livestock
- T&E (Southwestern Willow Flycatcher, Garter Snakes and Fish)
- Sonoran Desert
- Structural Range Improvements
- Watershed and future flooding issues

Actions

Notifications:

Recommended Management Action:

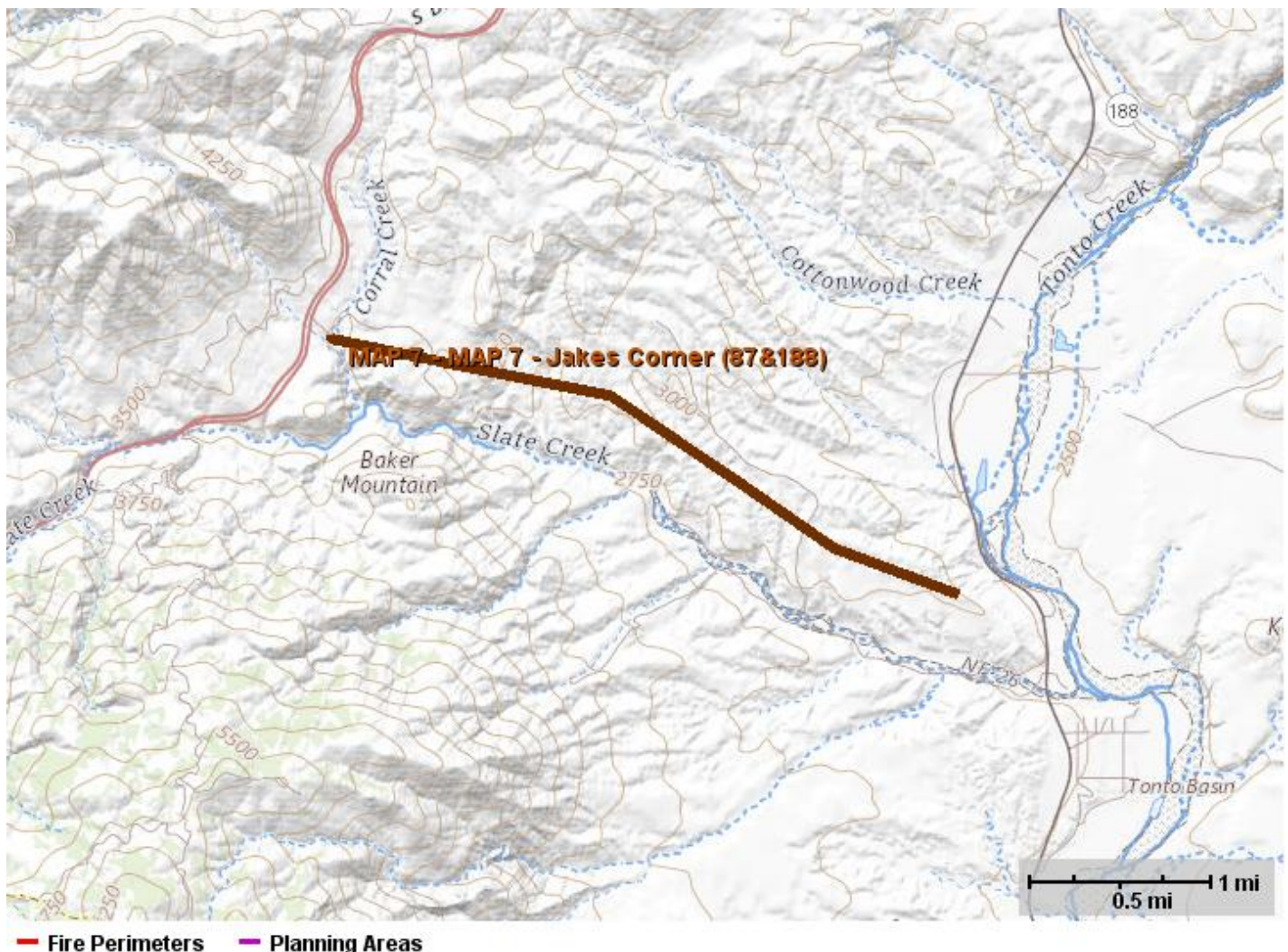
- Forest Agency Administrators and Fire Managers
- DPS (ADOT) & APS
- Gila County Sherriff and Emergency Manager
- State of Arizona Forestry and Fire
- Private residents and ranches
- Consider pre-evac notification and evacuation of communities **east** of the towns; Tonto Basin and Punkin Center (many are listed in the VAR bullets).
- Consider point protection, direct and indirect strategies to suppress fire.
- Consider developing more MAPs for SR288 and communities surrounding Pleasant Valley.
- Consider expanding the existing area closure of the Bush fire.

Resources

Recommended:

- Consider ordering more resources (Engines, Handcrews, Equipment and Aviation)
- Consider ordering more Law Enforcement and road guards

Management Action Point 7



| NAME | VALUE |
|---------------|-------------------------------|
| Incident Name | Bush |
| Cost | \$50,000 |
| Shape | MAP 7 - Jakes Corner (87&188) |
| Activated | 06/18/2020 |
| Deactivated | |
| Status | Active |

Condition

MAP Description: This MAP is located north of Slate Creek traveling east and west between SR87 and SR188.

Intent: If fire crosses or threatens the MAP, consider initiating strategies and tactics to suppress fire and reduce the impact to the community of Jake's Corner.

Values at Risk:

Probability: 80-100% Very High (Determined from FS PRO)

- APS - KV power lines
- Jake's Corner private structures
- Deer Creek and ranches north of the SR87 and SR188 junction

Actions

Notifications:

Recommended Management Action:

- Forest Agency Administrators and Fire Managers (include Payson RD)
- DPS (ADOT) & APS
- Gila County Sherriff and Emergency Manager

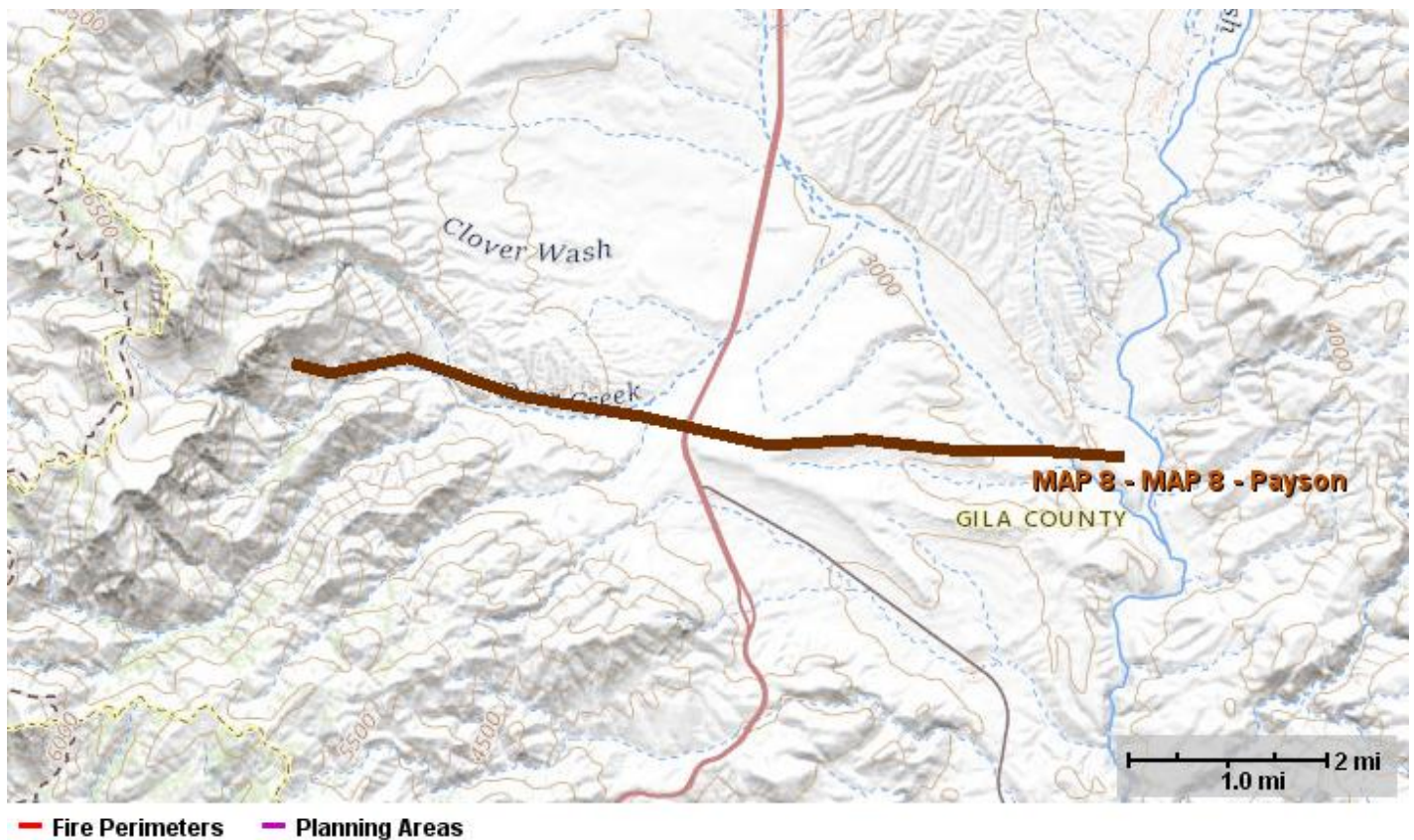
- State of Arizona Dept of Forestry and Fire
- Consider evacuating the community Jake's Corner
- Consider point protection, direct and indirect strategies to suppress fire.
- Consider evacuations of communities and private inholdings north of SR188 and SR87 junction (including but not limited to Deer Creek, Bar T Bar Ranch, Rye, Browns Ranch, Seventy-Six Ranch, Gisela and Oxbow Estates).

Resources

Recommended:

- Consider ordering more resources (Engines, Handcrews, Equipment and Aviation)
- Consider ordering more Law Enforcement and road guards

Management Action Point 8



| NAME | VALUE |
|---------------|----------------|
| Incident Name | Bush |
| Cost | \$500,000 |
| Shape | MAP 8 - Payson |
| Activated | 06/18/2020 |
| Deactivated | |
| Status | Active |

Condition

MAP Description: This MAP is located north of the SR87 and SR188 junction running west from Deer Creek across SR87 to the east ties into Tonto Creek.

Intent: If fire crosses or threatens the MAP, consider putting the town of Payson and surrounding communities on pre-evac notice.

Values at Risk:

Probability: < 0.2%-4.9% Very Low (Determined from FS PRO)
 With the potential of spotting with heavier fuels and grass loading the probability is higher

- Deer Creek
- Browns Ranch
- Bar T Bar Ranch
- Rye
- Gisela
- Seventy-Six Ranch
- Oxbow estates
- Communities surrounding Payson
- T&E species
- Sonoran Desert
- Livestock
- Structural Range Improvements
- Watershed and future flooding issues

Actions

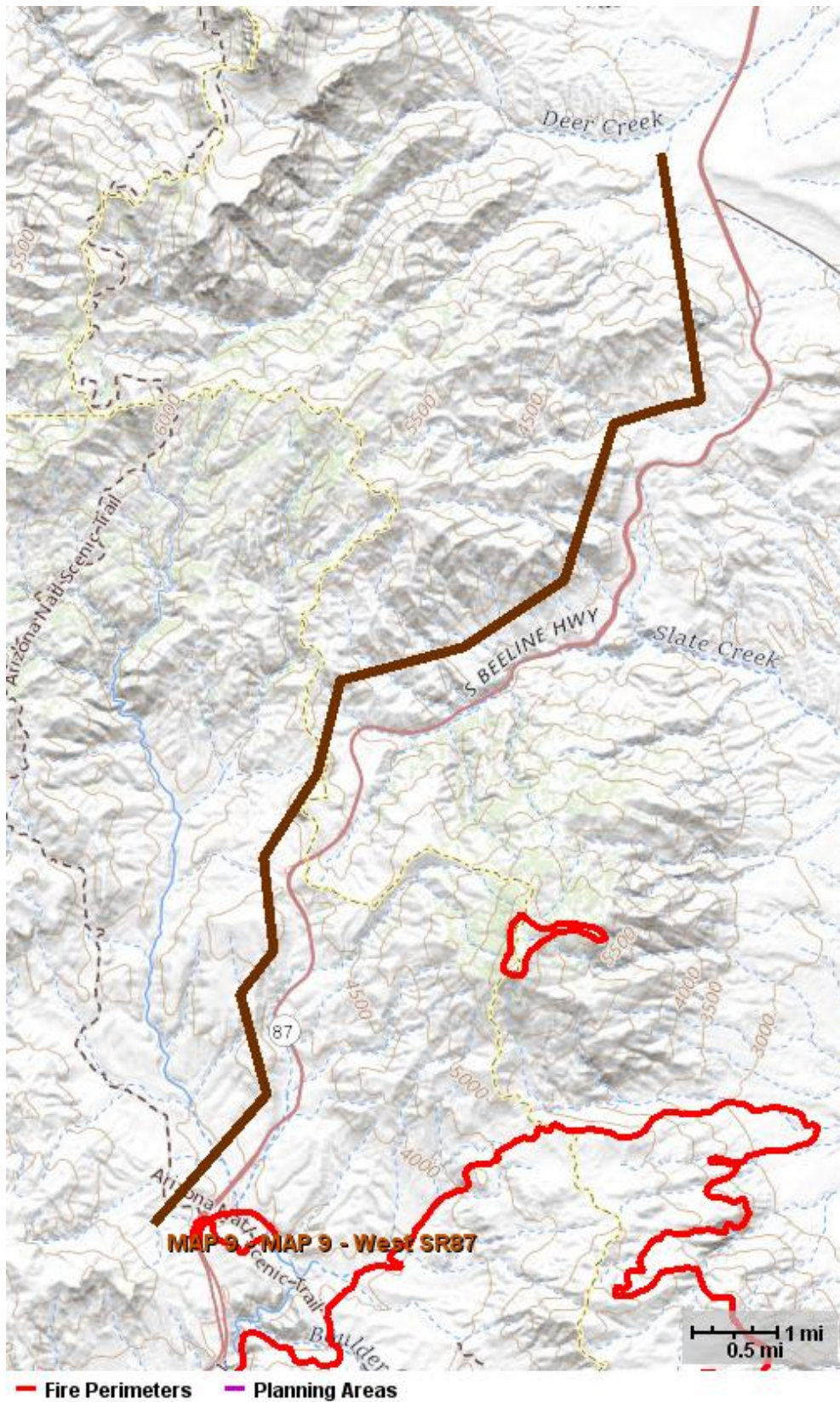
Notifications:**Recommended Management Action:**

- Forest Agency Administrators and Fire Managers (include Payson RD)
- DPS (ADOT) & APS
- Gila and Maricopa County Sherriff's and Emergency Managers
- State of Arizona Forestry and Fire
- Private residents and ranches
- Payson Fire Department
- Payson Police Department
- Payson City Managers
- Consider pre-evac notification and/or evacuation of communities north near Payson.
- Consider point protection, direct and indirect strategies to suppress fire.
- Consider developing more MAPs for communities surrounding Payson.
- Consider expanding the existing area closure of the Bush fire.

Resources**Recommended:**

- Consider Branching existing organization or adding another IMT to assist with span of organizational control.
- Consider ordering more resources (Engines, Handcrews, Equipment and Aviation)
- Consider ordering more Law Enforcement and road guards

Management Action Point 9



| NAME | VALUE |
|---------------|-------------------|
| Incident Name | Bush |
| Cost | \$250,000 |
| Shape | MAP 9 - West SR87 |

| | |
|-------------|------------|
| Activated | 06/18/2020 |
| Deactivated | |
| Status | Active |

Condition

MAP Description: This MAP is west of SR87 running north to south from Sunflower to north of the SR87 and SR188 junction.

Intent: If fire crosses or threatens the MAP, consider suppression strategies and tactics to protect and reduce impacts to the community of Sunflower and surrounding private ranches and lands.

Values at Risk:

Probability: 5%-19% Low - Moderate (Determined from FS PRO)

With the potential of spotting with heavier fuels and grass loading the probability is higher

- Community of Sunflower
- Diamond Ranch
- Cross F Ranch
- APS - KV power lines
- Deer Creek
- Browns Ranch
- Bar T Bar Ranch
- Rye
- Gisela
- Seventy-Six Ranch
- Oxbow estates
- Communities surrounding Payson
- T&E species
- Sonoran Desert
- Livestock
- Structural Range Improvements
- Watershed and future flooding issues
- Sonoran Desert ecosystem
- Mazatzal Wilderness Area

Actions

Notifications:

Recommended Management Action:

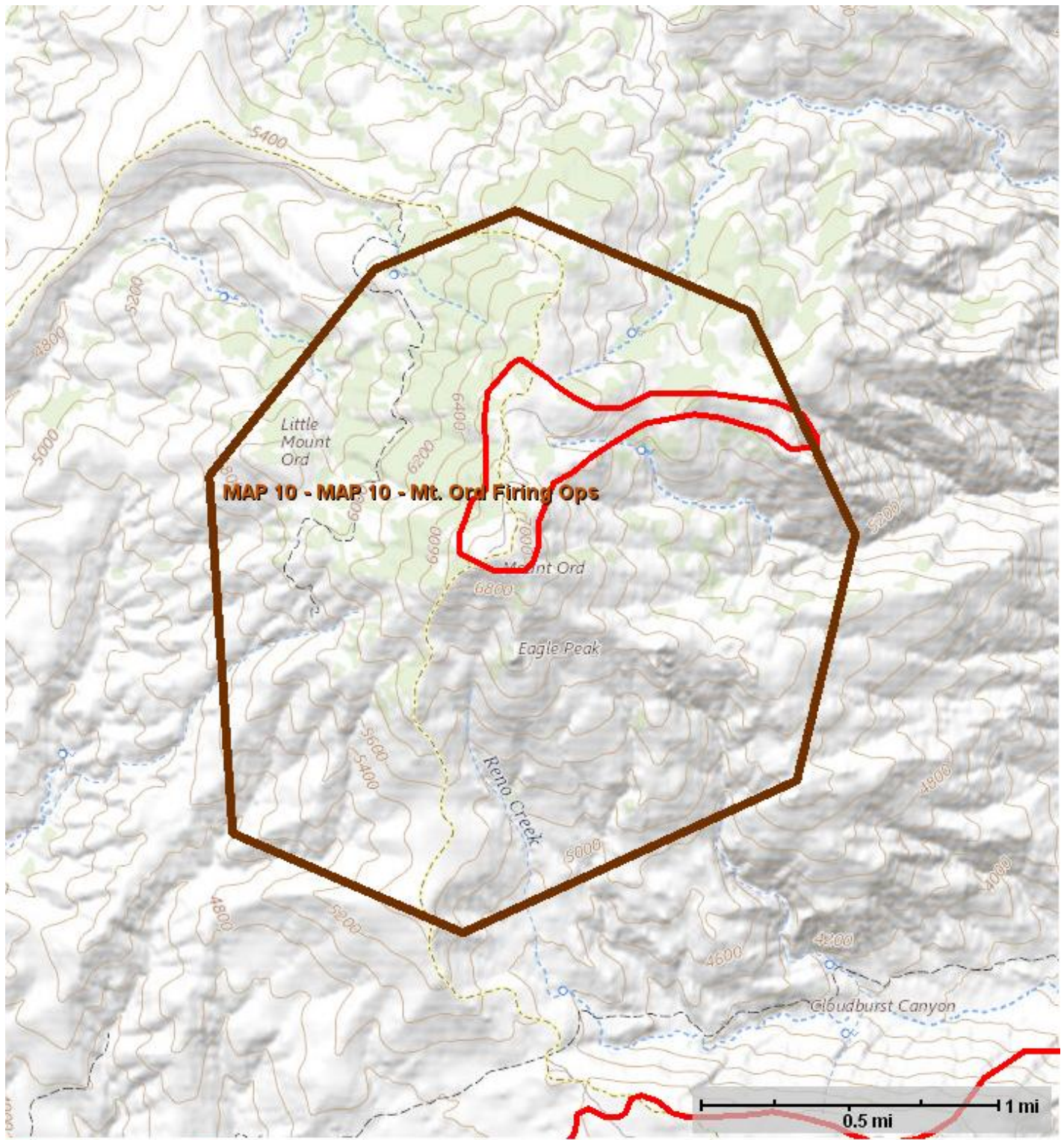
- Forest Agency Administrators and Fire Managers (include Cave Creek RD)
- DPS (ADOT) & APS
- Gila and Maricopa County Sherriff's and Emergency Managers
- State of Arizona Forestry and Fire
- Private residents and ranches
- Minerals and Geology Specialists (for the Mercury Mines and other mining activity)
- Consider point protection, direct and indirect strategies to suppress fire around private property in the Sunflower community.
- Consider evacuations of communities and private inholdings north of SR188 and SR87 junction (including but not limited to Deer Creek, Bar T Bar Ranch, Rye, Browns Ranch, Seventy-Six Ranch, Gisela and Oxbow Estates).
- Consider expanding the existing area closure of the Bush fire.

Resources

Recommended:

- Consider Branching existing organization or adding another IMT to assist with span of organizational control.
- Consider ordering more resources (Engines, Handcrews, Equipment and Aviation)

Management Action Point 10



— Fire Perimeters — Planning Areas

| NAME | VALUE |
|---------------|-----------------------------|
| Incident Name | Bush |
| Cost | |
| Shape | MAP 10 - Mt. Ord Firing Ops |
| Activated | 06/18/2020 |
| Deactivated | |
| Status | Active |

Condition

MAP Description: This MAP is more conditional than land based. Once firing operations begin on Mt Ord to protect values of the communications sites and properties.

Intent: Once firing operations begin on Mt Ord, consider notifications of pre-evac notices and evacuation as needed for Jake's Corner, and communities north of the SR87 and SR188 junction.

Values at Risk:

Probability: 80-100% Very High (Determined from FS PRO)

- Community of Sunflower
- Diamond Ranch
- Cross F Ranch
- APS - KV power lines
- Jake's Corner
- Deer Creek
- Browns Ranch
- Bar T Bar Ranch
- Rye
- Gisela
- Seventy-Six Ranch
- Oxbow estates
- Communities surrounding Payson
- T&E species
- Sonoran Desert
- Livestock
- Structural Range Improvements
- Watershed and future flooding issues
- Sonoran Desert ecosystem
- Mazatzal Wilderness Area

Actions

Notifications:

Recommended Management Action:

- Forest Agency Administrators and Fire Managers (include Cave Creek and Payson RD)
- DPS (ADOT) & APS
- Gila and Maricopa County Sherriff's and Emergency Managers
- State of Arizona Forestry and Fire
- Private residents and ranches
- Consider point protection, direct and indirect strategies to suppress fire around private property in the Sunflower community.
- Consider evacuations of communities and private inholdings north of SR188 and SR87 junction (including but not limited to Deer Creek, Bar T Bar Ranch, Rye, Browns Ranch, Seventy-Six Ranch, Gisela and Oxbow Estates).
- Consider expanding the existing area closure of the Bush fire.

Resources

Recommended:

- Consider ordering more resources (Engines, Handcrews, Equipment and Aviation)

1.9. Cost

Estimated Final Cost

| NAME | VALUE |
|----------------------|--------------------|
| Estimated Final Cost | \$12,700,000 |
| Method(s) Used | e-ISuite, Other |

Comments

Based on current information

1.10. Rationale

Bush Fire Rationale - 06-15-2020

In close coordination with State of AZ - Department of Forestry and Fire officials, who also have jurisdictional responsibilities within the planning area, the decision to utilize a full-suppression strategy is appropriate. The values at risks (VARs) have been discussed and identified. Risk based decisions to achieve full suppression should be utilized that prioritize the health and safety of assigned resources and the public, protection of identified VARs, and impacts to the natural and heritage resources. Incident management actions are being implemented during the COVID-19 pandemic and mitigation measures should be implemented to minimize risk and exposure to assigned resources, the communities affected by the incident and other persons engaged in management activities.

Type 1 Team Decision

My decision is to upgrade the Bush incident from a Type 2 IMT to a Type 1 IMT. The fire has a full suppression strategy. The fire is expected to be long-term event due to the dry fuel conditions and a 2-4 week time frame before the arrival of the seasonal monsoons. Until that time, weather is expected to be hot and dry with winds at times single digit relative humidity without good RH recoveries. Probabilities of success are good with the increase in capacities that a Type 1 team will bring. Retaining the assigned Type 2 team was considered, but rejected due to the increase in communities at risk, the size of the fire, the number of firefighters assigned, the complexity of firefighting and the logistical, communication, and political concerns.

The State of Arizona shared in this decision to bring in the Type 1 team. They agreed that the fire size, behavior, and threats to communities and private property warranted the change; also considered were the logistics, communication, political and socio-economic considerations and well as the impacts to residents and visitors had increase over the course of the incident.

The values at risk are summarized in the WFDSS risk assessment but include the communities of Tonto Basin, Punkin Center, Jake's Corner, Rye, Gisela, Sunflower, Bar T Bar Ranch and Deer Creek. Other values at risk include various private in-holdings, KV powerlines (APS), Mt Ord communications tower, and the transportation corridors of State Route 87, 188 and the Bush Highway. Resource values at risk include the Sonoran Desert, the Four Peaks Wilderness, numerous historic and pre-historic archaeological sites, and Threatened/Endangered/Sensitive species.

The risk assessment include considerations to firefighter safety, communities and values at risk, and the logistical concerns with a fire of this size. Over 600 fire fighters are currently assigned to incident, and firefighter exposure is expected to be high. The fire is currently over 173 square miles, with 2 branches and 9 divisions. This large fire creates logistical challenges that come with multiple base and spike camps.

The current fire situation is 114,941 and 5% contained. The weather has been dry and hot with winds pushing the fire. Fuel conditions have been extreme with ERCs above the 90th percentile. Fire behavior has been very active with 20k-30k acres burnt per day being average. Fire growth has been consistent since the fire start on 6/13/2020, and is expected to continue.

Containment of the fire growth is expected along the major transportation corridors of SR87 and SR188 to the west, north and east, and the Salt River corridor to the south. If the fire were to become established outside of these containment features, it would trigger a discussion of the existing decision and could lead to a new WFDSS decision.