



Bush Incident Decision

Published
06/15/20 19:32

Table of Contents

1. Decision	2
1.1. Decision Summary.....	2
1.2. Incident Information.....	3
1.3. Weather.....	6
1.4. Modeling.....	10
1.5. Risk.....	13
1.6. Benefits.....	21
1.7. Objectives.....	22
1.8. Course of Action.....	27
1.9. Cost.....	35
1.10. Rationale.....	36

1. Decision

1.1. Decision Summary

Decision Information

NAME	VALUE
Published	06/15/2020 19:32 CDT
Estimated Cost	\$6,000,000
Incident Owner(s)	Mary Lata, CorDell Taylor, Taiga Rohrer
Editor(s)	Arthur Gonzales, Andrew Leiendecker, Gabe Holguin, thomas torres, Wesley Hall
Reviewer(s)	Bradley Johnson, Dave Ramirez, Erick Stemmerman, Kelly Jardine, Matthew Lane, Taiga Rohrer
Approver(s)	thomas torres
Natl Preparedness Level	3

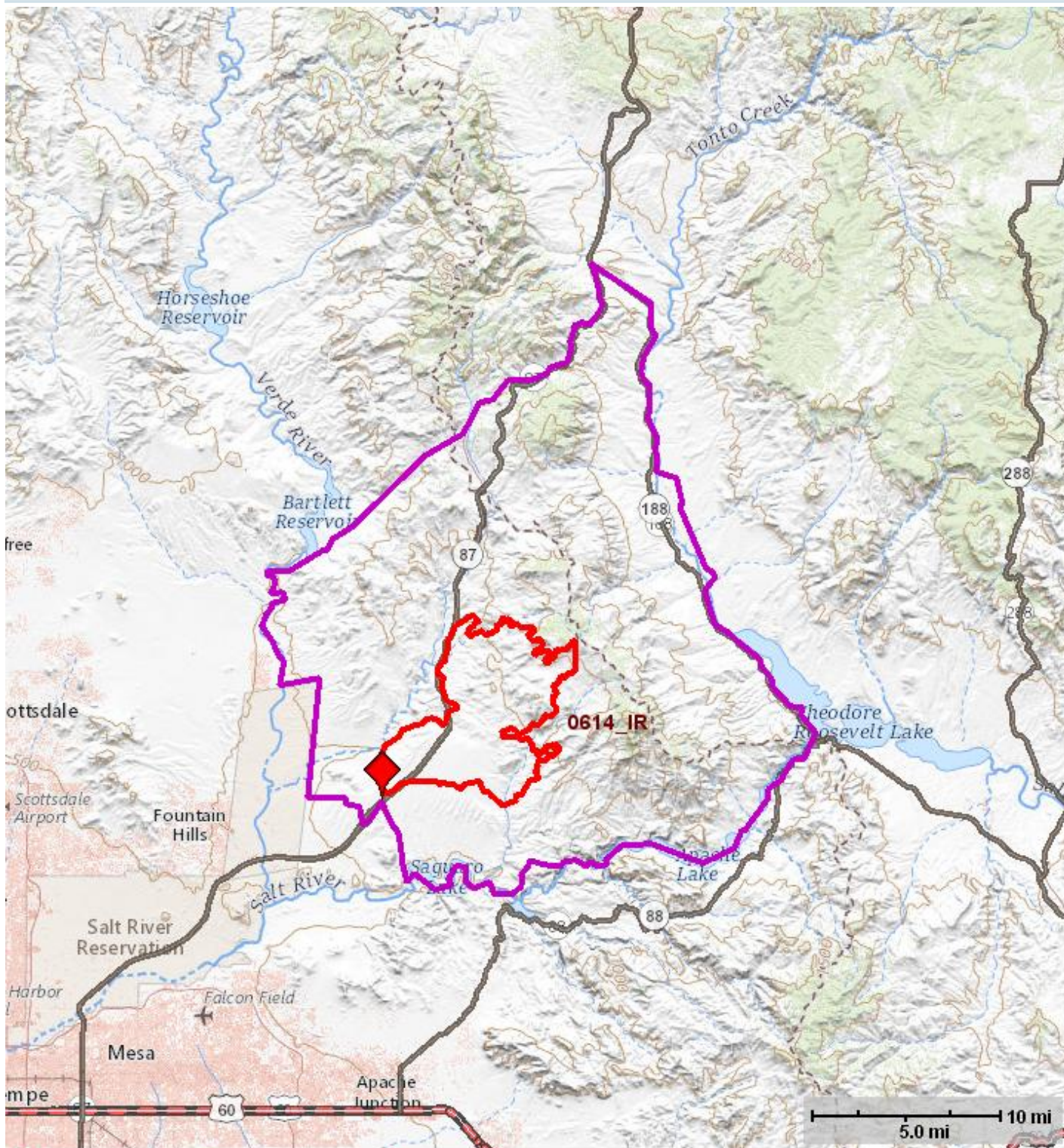
Decision History

Editor Name	Action	Date (CDT)	Comment
torres, thomas	Approved	06/15/2020 19:32	
torres, thomas	Published	06/15/2020 19:32	
Taylor, CorDell	Review Requested	06/15/2020 19:27	
Taylor, CorDell	Review Requested	06/15/2020 19:26	
Lata, Mary	Created	06/14/2020 01:40	

1.2. Incident Information

Incident Information

NAME	VALUE
Incident Name	Bush
Unique Fire Identifier	2020-AZTNF-001581
Responsible Unit Name	Tonto National Forest
FireCode	M6M6
P-Code	P3M6M6
Point of Origin	33.6257N / 111.562 W
Incident Size	36,257acres
Latest WFDSS Perimeter Size	36,284acres
Incident Cause	Human
Incident Type	Wildfire
Incident Discovery	06/13/2020 13:45
Contained	
Controlled	
Out	
Jurisdictional Unit	AZTNF - Tonto National Forest
Jurisdictional Agency(s)	USFS
Geographic Area (prep level)	Southwest (4)
Owner Name(s)	Mary Lata, CorDell Taylor, Taiga Rohrer



Bush Fire - 6/13

Photo 4

Helicopter view



1.3. Weather

Fire Weather Zone Forecast

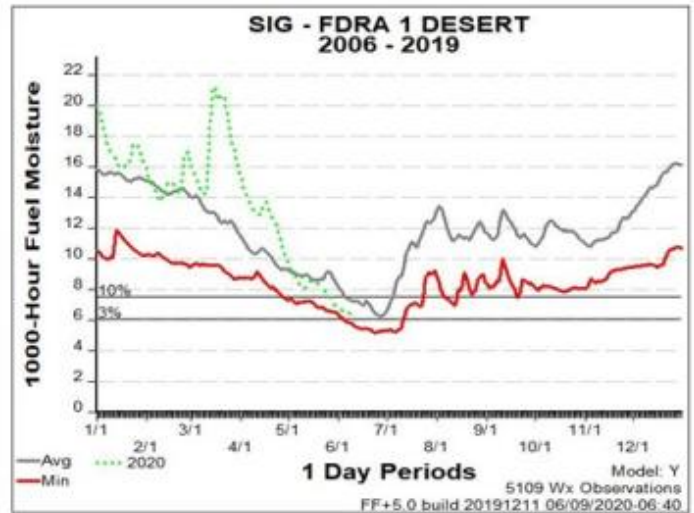
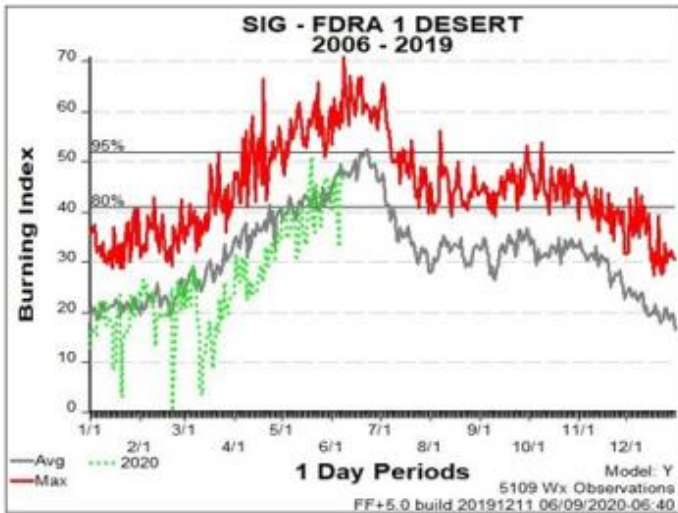
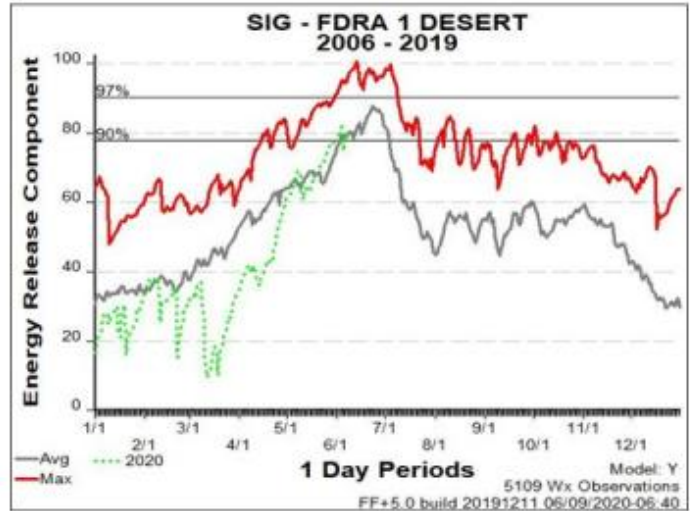
000
FNUS55 KPSR 152038
FWFPSR
Fire Weather Planning Forecast for Southwest and South-Central
Arizona and Southeast California
National Weather Service Phoenix AZ
138 PM MST Mon Jun 15 2020
...Dry and windy Tuesday...
.DISCUSSION...
Moderate afternoon breeziness today will increase considerably
on Tuesday as a weather system passes to the north. Minimum
humidities will remain below 15% for nearly all areas...and even
below 10% over the lower elevations of south-central Arizona.
Winds will be a little lighter on Wednesday but there will still
be enhanced breeziness and minimum humidities will remain below
15%. On a positive note, maximum humidities trend upward with
readings increasing 5-10% by Wednesday morning compared to this
morning. Thunderstorms are expected to remain east and especially
southeast of the forecast area this evening. But, there is a
slight chance of outflow from distant storms reaching southern
Gila County. Anticipate even less storm coverage Tuesday.
Note...Additional Fire Weather Forecast information can be found
in the Area Forecast Discussion. See product PHXAFDPSR.
AZZ133-160845-
Southern Gila County/Tonto National Forest Foothills-
Southern Tonto NF/West San Carlos BIA/South Portion Ft Apache BIA/
CAZ-
138 PM MST Mon Jun 15 2020
.TONIGHT...
* Sky/weather.....Clear.
* Min Temperature.....60-73.
* 24 hr trend.....Little change.
* Max Humidity.....23-42 pct.
* 24 hr trend.....7 pct wetter.
* Winds - 20 foot...Slope/Valley..South 5 to 15 mph.
* Winds...10000 FT MSL.....Southwest 15 to 25 mph in the
evening becoming south 25 to 35 mph after midnight.
* Chance of Precip.....0 percent.
* LAL.....1.
.TUESDAY...
* Sky/weather.....Sunny.
* Max Temperature.....88-102.
* 24 hr trend.....Little change.
* Min Humidity.....8-13 pct.
* 24 hr trend.....Little RH change.
* Winds - 20 foot...Slope/Valley..South 5 to 10 mph in the morning
becoming southwest 10 to 20 mph in the afternoon with gusts to
30 mph.
* Winds...10000 FT MSL.....Southwest 25 to 35 mph.
* Chance of Precip.....0 percent.
* LAL.....1.
* Haines High Level Index.....5 moderate potential for large
plume dominated fire growth.
.TUESDAY NIGHT...
* Sky/weather.....Clear.
* Min Temperature.....57-71.
* 24 hr trend.....3 degrees cooler.
* Max Humidity.....22-31 pct.
* 24 hr trend.....4 pct drier.
* Winds - 20 foot...Slope/Valley..Southwest 5 to 15 mph.
* Winds...10000 FT MSL.....Southwest 25 to 35 mph in the
evening becoming 35 to 45 mph after midnight.
* Chance of Precip.....0 percent.
* LAL.....1.
.WEDNESDAY...
* Sky/weather.....Sunny.
* Max Temperature.....86-100.
* 24 hr trend.....Little change.
* Min Humidity.....8-13 pct.
* 24 hr trend.....Little RH change.
* Winds - 20 foot...Slope/Valley..South 5 to 10 mph in the morning
becoming southwest 10 to 20 mph in the afternoon with gusts of
25 to 30 mph.
* Winds...10000 FT MSL.....Southwest 30 to 40 mph.
* Chance of Precip.....0 percent.
* LAL.....1.
* Haines High Level Index.....4 low potential for large plume
dominated fire growth.
.EXTENDED...
.THURSDAY...Clear. Lows 54-70. Highs 85-99. South winds 5 to
15 mph. Minimum relative humidity may be lower than 15 percent.

Fire Weather Zone Forecast

.FRIDAY...Clear. Lows 54-71. Highs 87-100. South winds 5 to 15 mph. Minimum relative humidity may be lower than 15 percent.
.SATURDAY...Mostly clear. Lows 55-72. Highs 89-102. South winds 5 to 15 mph. Minimum relative humidity may be lower than 15 percent.
.SUNDAY...Mostly clear. Lows 57-74. Highs 91-104.
.MONDAY...Mostly clear. Lows 59-75. Highs 92-106.
\$\$
.8 TO 10 DAY OUTLOOK...Tuesday June 23rd through Thursday June 25th: Above normal temperatures and near median precipitation.

ERC Sonoran Desert FDRA

ERC chart Sonoran Desert

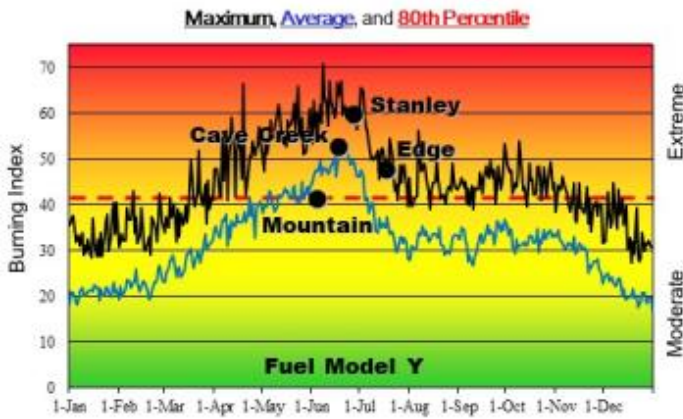
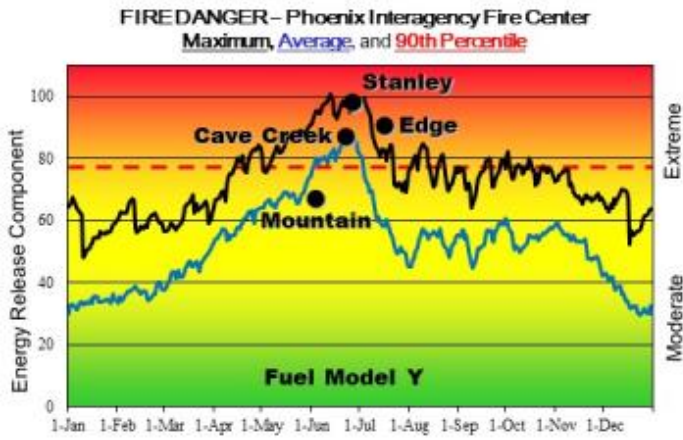


Bush fire - 6/13 near origin

Photo 2

Parking area





Fire Danger Area: Sonoran Desert

- Phoenix Interagency Fire Management Area
- Tonto NF, San Carlos Agency, Pima/Salt River Agencies, and Tonto National Monument.
- Fire Wx Forecast Zone AZ132
- Sunset Point* (020510), Globe* (020601) Tonto Basin* (020606) and San Carlos 1* (020608) RAWS
- *Meets NWCG Weather Station Standards



Fire Danger Graph Interpretation:



- EXTREME** - Use extreme caution
- CAUTION** - Watch for change
- MODERATE** - Lower potential, but always be aware

- MAXIMUM** - Highest ERC / BI by day for 2006 - 2019
- AVERAGE** - Average daily ERC / BI value for 2006 - 2019
- 90th Percentile ERC** - Only 10% of the days from 2006 - 2019 were over **78**
- 80th Percentile BI** - Only 20% of the days from 2006 - 2019 were over **41**

Local Thresholds - Watch Out:

Erratic Fire behavior associated with thunderstorm activity. Watch for overnight temps above 90 degrees and poor night time RH recovery. Sundowner (strong evening down slope) winds can develop quickly. Extreme Fire Behavior when RH is less than 10% or live fuel moistures fall below 75%.

Remember what Fire Danger tells you:

- ✓ Energy Release Component gives seasonal trends calculated from 13:00 temperature and RH, daily temperature & RH ranges, and precipitation duration
- ✓ Burning Index gives day to day fluctuations calculated from 13:00 temperature, wind, and RH, daily temperature & RH ranges, and precipitation duration
- ✓ Watch local conditions and variations across the landscape - Fuel, Weather, Topography

Past Fire Experience:

Tonto NF Edge Complex July 16, 2005 (ERC 91, BI 47), 72,000 acres. Phoenix Weather Temp. 112, RH 11, Windspeed 15 mph.

Tonto NF Cave Creek Complex June 21, 2005 (ERC 82, BI 53), 243,950 acres. Phoenix Weather Temp. 112, RH 8, Windspeed 8 mph.

San Carlos Agency Stanley Fire June 26, 2011 (ERC 92, BI 58), 8,832 acres. San Carlos 1 RAWS Temp. 107, RH 7, Windspeed 12 mph.

Tonto NF Mountain Fire June 7, 2019 (ERC 68, BI 41), 7,470 acres. Tonto Basin RAWS Temp. 97, RH 12, Windspeed 7 mph.

Check with local personnel about annual grass fuel loading. Large fires can occur at low ERC if annual grasses and fine fuels are continuous enough to carry a fire.

Produced May 11, 2020 using FireFamily+ v5.0 (PIFC_FFP_DB_updated_05_07_20.mdb)

Responsible Agency: Phoenix Interagency Fire

1.4. Modeling

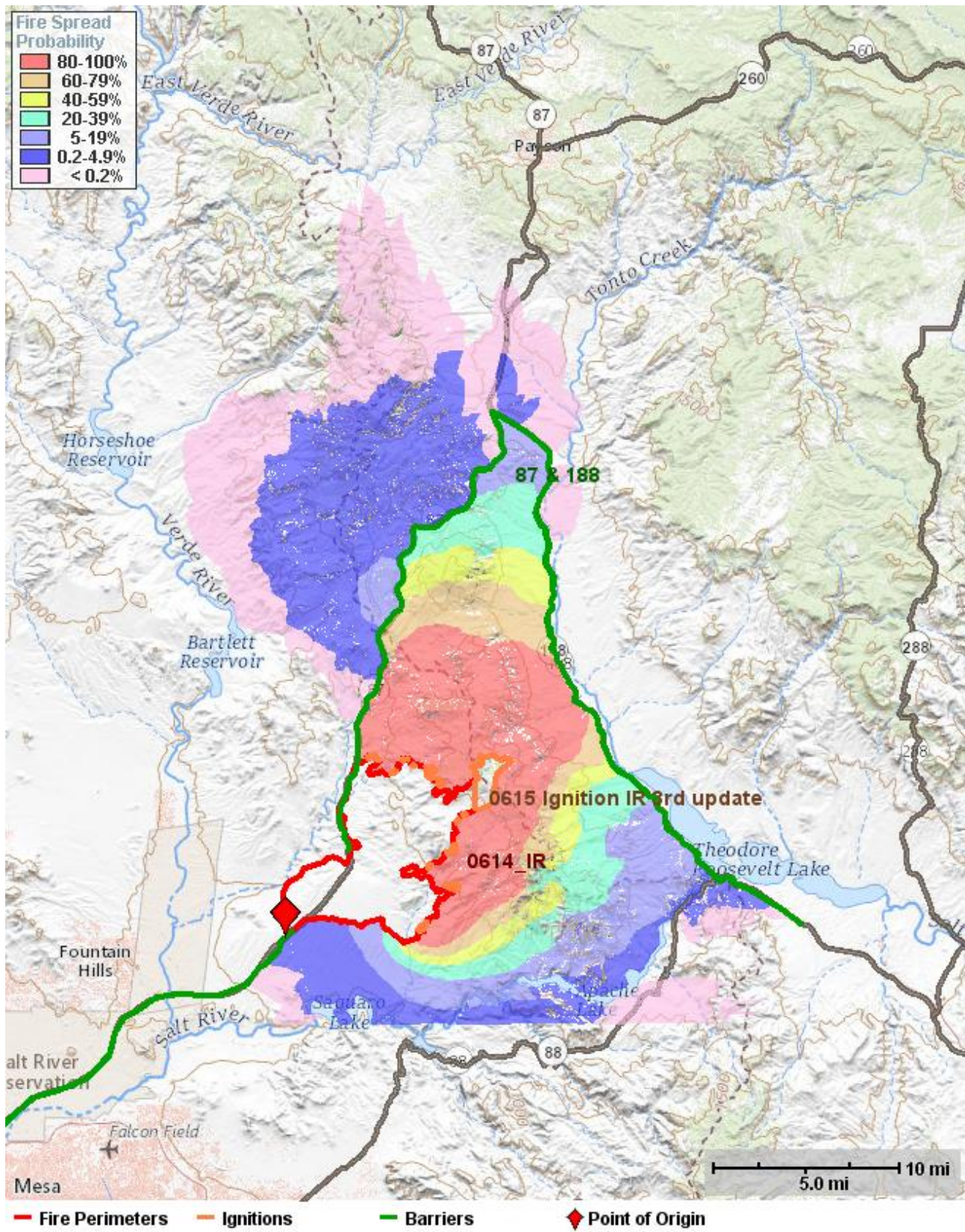
FSPRO (FSPRO 7 Day Update for Cordell - Started on 06-15-2020)

FSPRO General Information

NAME	VALUE
Analysis Name	FSPRO 7 Day Update for Cordell
Analysis Start	06/15/2020
Duration	7 days
Simulations	1200 fires

Time (CDT)	User	Note
06/15/2020 14:53	Hall, Wesley	Initial calibration runs. Ignition is based off of 6-14 IR with intense heat. Both Highway 87 and 188 are inserted as barriers to spread and are expected to act as such. This run does show that there is potential for spotting both west over highway 87 and east over highway 188 under extreme or rare event weather. The fire has been behaving in extreme conditions and thus one of these rare events may be more likely than on an average year. Tonto Basin RAWS was used due to proximity to the fire and wind matrix consistency. This probabalistic run was completed under a coarse landscape and likely does not incorporate fine scale changes in fuel models. More calibration is being conducted and a new FSPRO should replace this one as intel improves.

[FSPRO Analysis 'FSPRO 7 Day Update for Cordell'](#)



Smoke Dispersion

Latitude Longitude Model Time
 33.6257 -111.56200 GFS 06/15/2020
 18:27

Smoke Dispersion

National FCAMMS Smoke Dispersion Forecast Guidance

Forecast date/ time (UTC)	Mixing height (ft-agl)	Transport wind speed (kt)	Transport wind direction	Ventilation rate (kt-ft)	Haines Low	Haines Medium	Haines High	PM2.5 surface (ug/m ³)
02/20 12	56	5	92	282	5	6	4	0
02/20 15	92	7	89	628	5	6	4	0
02/20 18	1939	3	85	6068	6	6	4	0
02/20 21	5139	4	108	22349	6	6	3	0
02/21 00	3337	4	53	11883	6	6	2	0
02/21 03	115	8	77	949	5	5	2	0
02/21 06	187	14	99	2643	4	5	2	0
02/21 09	220	15	92	3363	4	6	2	0
02/21 12	436	16	91	6867	4	6	2	0
02/21 15	707	6	91	4272	4	5	2	0
02/21 18	1278	7	87	8312	4	6	2	0
02/21 21	1972	6	89	11557	5	6	2	3
02/22 00	1311	5	89	6283	5	5	2	0
02/22 03	348	12	90	4165	5	5	2	0
02/22 06	213	10	87	2140	3	5	2	0
02/22 09	361	11	90	3909	3	4	2	0
02/22 12	485	9	92	4549	2	3	2	0
02/22 15	276	7	92	1943	2	3	2	0
02/22 18	630	4	125	2596	3	3	2	0
02/22 21	576	5	255	2996	3	3	2	0
02/23 00	2183	11	230	23852	4	3	4	0
02/23 03	148	13	243	1888	4	3	3	0
02/23 06	115	12	223	1350	4	4	2	0
02/23 09	233	14	239	3203	3	4	2	0
02/23 12	128	4	222	467	3	3	2	0
02/24 00	3852	6	291	21801	4	2	4	0
02/24 06	98	0	265	35	3	3	4	0
02/24 12	79	3	97	251	5	4	5	0
02/24 18	2237	2	55	5440	5	5	6	0
02/25 00	2653	5	300	13491	6	5	6	0
02/25 06	56	1	189	74	5	5	5	0
02/25 12	56	5	104	257	5	5	5	0
02/25 18	3043	7	59	22427	6	5	5	0
02/26 00	3680	6	38	23449	6	5	5	0
02/26 06	95	10	64	913	4	5	5	0
02/26 12	75	12	90	909	4	5	5	0
02/26 18	1816	6	80	10110	4	5	5	0
02/27 00	2231	5	70	10554	5	6	4	0
02/27 06	69	7	84	490	4	5	5	0
02/27 12	66	9	88	612	4	5	5	0
02/27 18	1424	5	80	7054	5	6	5	0
02/28 00	2170	4	74	9038	6	6	5	0

1.5. Risk

Relative Risk

NAME	VALUE
Relative Risk	High
Duration	Moderate
Saved By	Taylor, CorDell
Completed	06/14/2020 18:06 CDT

Relative Risk Notes

Fire potential is always high in the weeks before monsoon rains begin. This year, with the added fine fuel load provided by invasive grasses from two years, there is above average potential for undesirable fire effects and behavior in the desert. Fire behavior this time of year puts many values at risk that are not adapted to fire, or are highly departed from historic conditions.

Values Notes

Within the planning area there are:

NATURAL/CULTURAL/RESOURCE

*2 Occupied Gila Top Minnow sites (Mud Springs and Hidden Water Springs.)

*at least 2 MSO PACs

*Sycamore Creek, which has numerous sensitive species (fauna)

*Retardant avoidance areas associated with threatened and endangered species

*Bald eagle cliff nests near Saguaro Lake.

*All of the Sonoran Desert area is habitat for Desert Tortoise

*4 Peaks Study Site for Sonoran Desert Tortoise

*Sugar Loaf Study Area

*Cane Springs (or Brown Springs?) Cabin

*Arizona G&F Cabin

*Prehistoric sites are found throughout the planning area

*Range Improvements (fences, tanks, etc.) throughout the planning area

*Two herds, one to the north and one to the east of the current location of the fire. ~200 head, 31 bulls, 20 horses (average).

*Two new wildlife waters that G&F just put in near Edwards Park and Big Pine Flat

*Four Peaks Wilderness

*Camp Reno Historic cavalry camp

INFRASTRUCTURE

Bush Highway

Hwy 87

Hwy 188

Broadcast site of of FS143

Amethyst Mine

High Voltage KV power lines (APS)

Dos S Ranch

Sunflower Estates

Sunflower USFS work center

Cross F Ranch

Diamond Ranch

Mt Ord lookout and communication site

COMMUNITIES

Tonto Basin

Punkin Center

RECREATION:

Butcher Jones Rec Site

Saguaro Del Norte Rec Site (including a marina)

Pobrecito Rec Site

Lower Sycamore Staging Area

Four Peaks Staging Area

Sugarloaf Staging Area

Mesquite Staging Area

Multiple trails, FS roads, ORV routes, including the Arizona National Scenic Trail

Proximity & Threat of Fire to Values

Day 1 this fire burned over 7,000 acres before sunset, and is continuing to burn actively into the night. Winds tomorrow are expected to be SE 5 - 15 , shifting to the SW and gusting up to 20 in the afternoon. Overnight, winds are blowing downhill into Tonto Basin. The fire is already burning in the Sonoran Desert (not beneficial), and is moving towards some of the values listed above. Given current and expected fire behavior and the current proximity of fire to the values listed above, the Threat of Fire to Values is rated as high.

Social/Economic Concerns

The population of Tonto Basin and Punkin Center includes a substantial percentage of senior citizens, many of whom are vulnerable to smoke impacts.

Highway and rec site closures are already pending, and could have significant effects to local tourism and economics. Travel disruptions will be significant because Hwy 87 is one of the main arteries between the Mogollon Rim and the Phoenix Valley. This alone will be a significant impact, routing a lot of traffic through Tonto Basin and/or Camp Verde (and Interstate 17) when Highway 87 is closed. There is potential to also close the Bush Highway earlier than usual because of additional traffic - further increasing the traffic on SR88 and SR 260

Hazards Notes

Fuel condition is high. Two years of above average precipitation through the winter and spring have produced bumper crops of invasive grasses. These grasses now have a litter layer from last year, as well as above average production from this year's crop. Generally, desert surface vegetation is not contiguous, but the grasses this year are providing contiguous fuels over large areas. Current ERCs are in the 95%ile in both the Brush and Sonoran FDRAs. BI for both FDRAs is currently in the 97th %ile. Live fuel moistures are currently plummeting, and fuel moistures for woody species (oak/manzanita) are well below levels where they burn readily.

The fire has exhibited extremely active behavior, with 50 foot flame lengths allowing he highway that helped the fire jump the highway, with short range spotting 100

Potential Fire Growth

Good potential for alignment, with no significant barriers. The fire is approaching areas with steeper slopes and, as it gets higher in elevation, chaparral (dense, decadent shrubby fuel).

Probability Notes

Time of Season

Season is clearly moderate in regards to this being the middle of the season (fire effects and fire behavior aside). Monsoon is expected in 2-3 weeks.

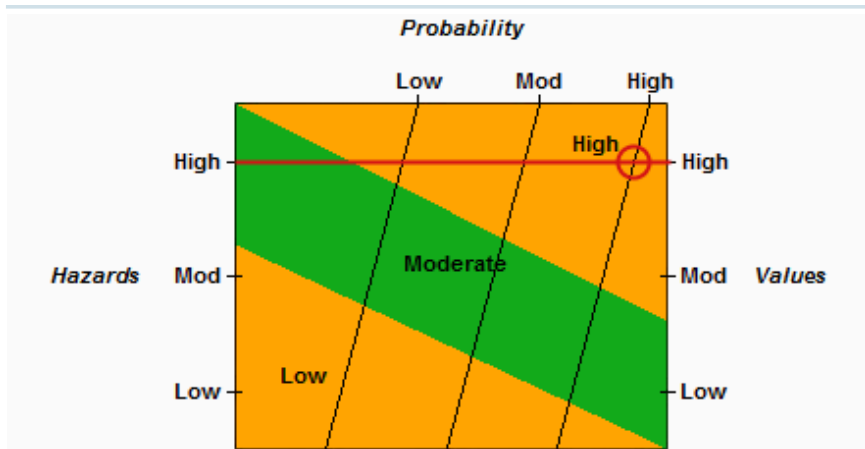
Barriers to Fire Spread

There are very few now that the fire has jumped over Hwy 87.

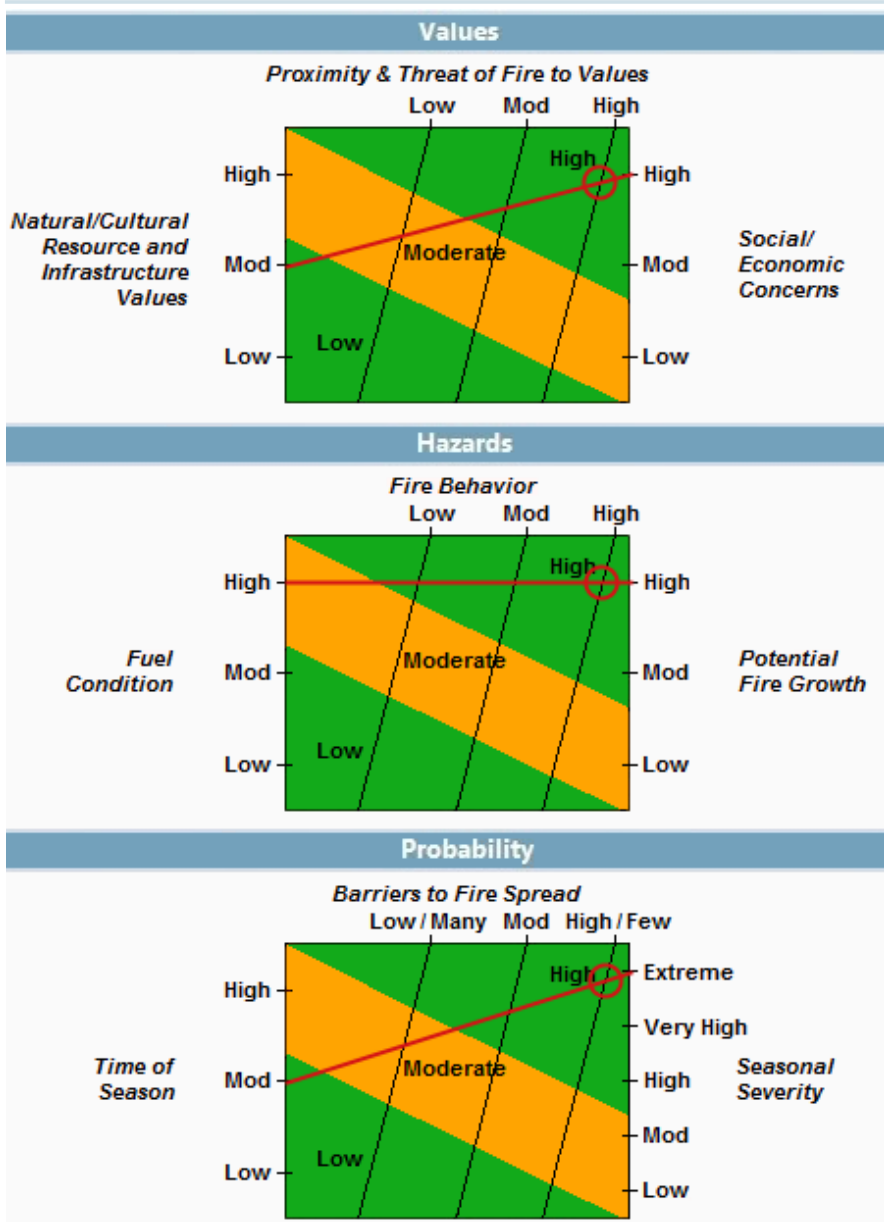
Seasonal Severity

Currently indices, weather, and fuel conditions are at extreme for the season. While they may not be out of the ordinary for this time of year, we are currently at the peak severity for the southwest.

Relative Risk Chart



Relative Risk Inputs



Organization Assessment

NAME	VALUE
Unit Recommended Org	Type 2
Saved By	Taylor, CorDell
Completed	06/14/2020 18:06 CDT

Organization Assessment Notes

A Type 2 organization should be a good fit for this fire, given the current and expected fire behavior and effects to affected areas. Relative risk as 'high' is largely because of potential fire behavior (fuel conditions, weather, fuels, and terrain). External influences are significant largely because of the visibility of the fire, and the potential for it to impact tourism, and major highways.

Relative Risk Notes

Fire potential is always high in the weeks before monsoon rains begin. This year, with the added fine fuel load provided by invasive grasses from two years, there is above average potential for undesirable fire effects and behavior in the desert. Fire behavior this time of year puts many values at risk that are not adapted to fire, or are highly departed from historic conditions.

Implementation Difficulty Notes

Potential Fire Duration

Duration is listed as moderate. Monsoon precipitation is predicted to be on time, though temperatures will be above normal. Typically, monsoon starts in late June to early July, though it can often be a week or two later in the Phoenix Valley because of the heat load accumulated at lower elevations.

Incident Strategies

There are already a mix of air and ground resources engaged, and closures are being written up to be implemented.

Functional Concerns

Currently, there are four divisions on the fire though it is not expected to go over five. Air resources will be a significant part of the strategy. Air resources could be limited at times, but should not be a significant complexity. The area the fire could burn into has few barriers, and limited access because of terrain.

COVID-19 adds to the difficulty and complexity of managing wildland fire.

Socio/Political Concerns Notes

Objective Concerns

The primary objective for the Bush Fire is to put it out as quickly and safely as possible.

Covid-19 is expected to increase the active interest in the management of this incident on the part of the public, the media, and cooperating agencies.

If the fire moves into upper elevations, there could be some beneficial effects, but not until it's burned through thousands of acres of Sonoran Desert where the effects are not beneficial.

External Influences

Covid-19 concerns are as described above.

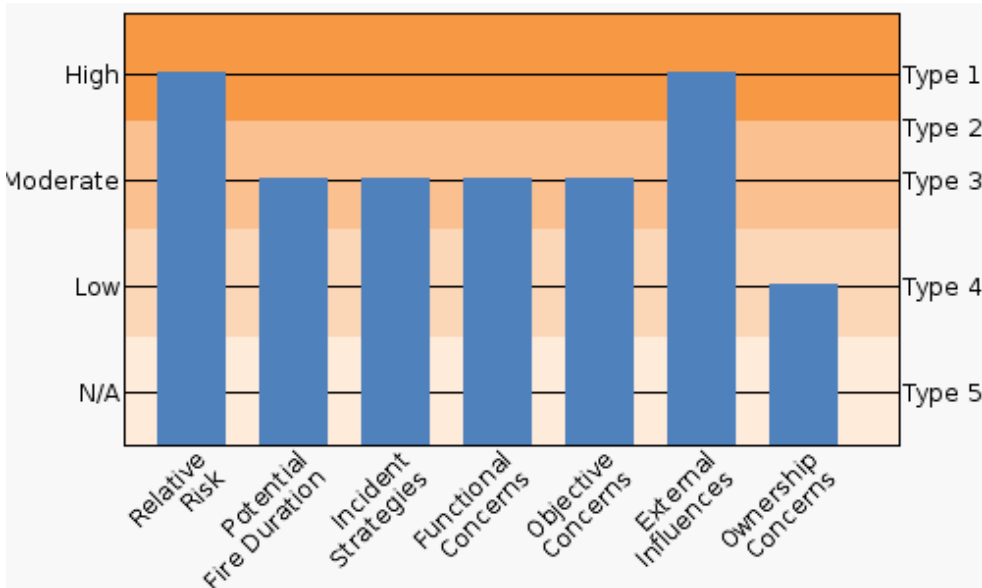
The potential impact of Highway 87 and the Bush Highway being closed at times, particularly on a weekend, will influence traffic on Highway 260 over to Interstate 17. Traffic is also likely to be routed through Tonto Basin and Globe.

There is potential for significant smoke impacts in Tonto Basin

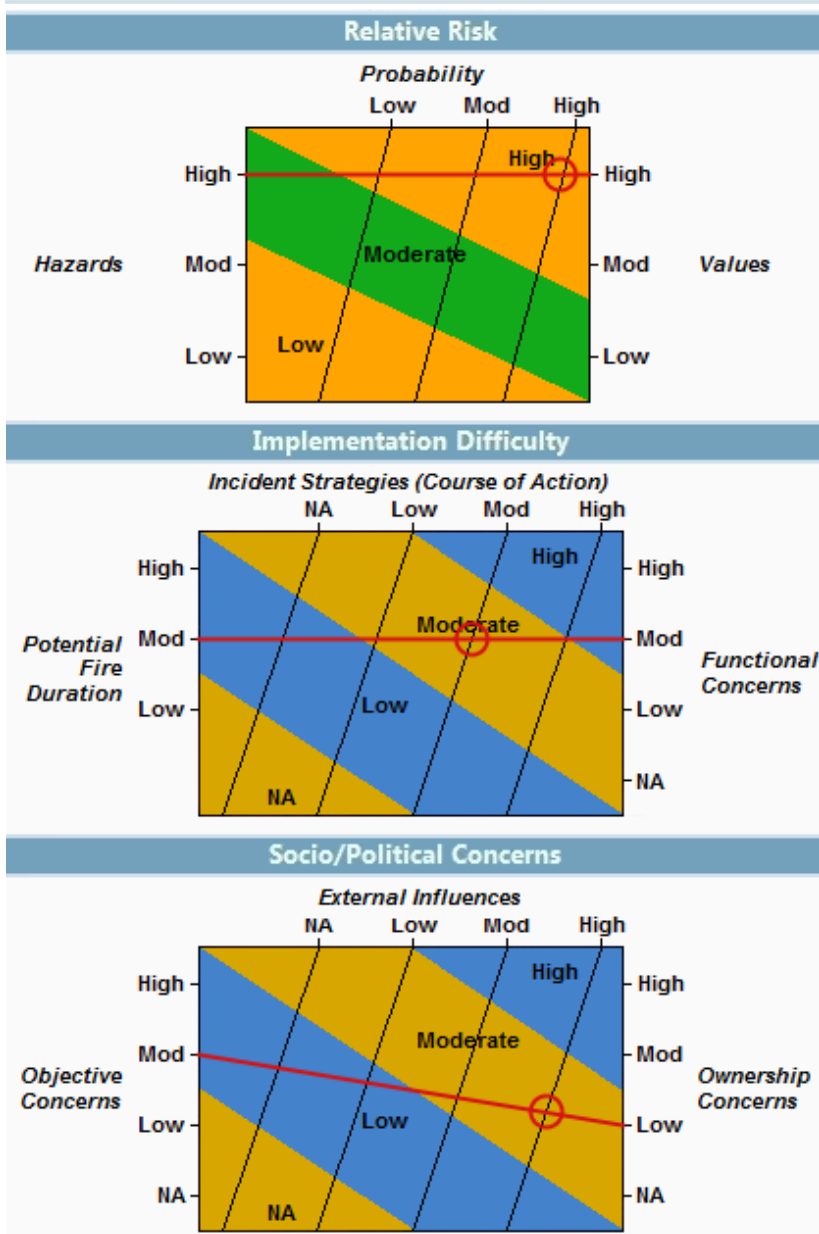
Ownership Concerns

The entire fire is currently burning on USFS, and the entire planning area is mostly on land managed by the USFS, with a small portion on state jurisdictional land. There is currently no expectation of the fire burning onto other jurisdictions.

Organization Assessment Chart



Unit Recommended Org: Type 2



Planning Area Values Inventory Generated at 06/15/2020 17:22

NAME	VALUE
Planning Area Name	06/15/2020 19:32
Incident Name	Bush
Planning Area Size	340,725 acres

Category	Value	Data Source	Currency	Coverage
AZTNF - Land / wilderness	6 acres	AZTNF		Unit
AZTNF - Lands / Designations / Special Mgt Areas	34,983 acres	AZTNF		Unit
AZTNF - Minerals / Hazard Cleanp Sites	3 acres	AZTNF		Unit
AZTNF - Mining / Mercury Mines	5	AZTNF		Unit
AZTNF - Strategic Response / POD_47_Protect	151 acres	AZTNF		Unit
AZTNF - Strategic Response / POD_50_Protect	9,768 acres	AZTNF		Unit
AZTNF - Strategic Response / POD_57_Restore	31,242 acres	AZTNF		Unit

Category	Value	Data Source	Currency	Coverage
AZTNF - Strategic Response / POD_58_Exclude	883 acres	AZTNF		Unit
AZTNF - Strategic Response / POD_60_Maintain	1,031 acres	AZTNF		Unit
AZTNF - Strategic Response / POD_62_Exclude	45 acres	AZTNF		Unit
AZTNF - Strategic Response / POD_64_Exclude	503 acres	AZTNF		Unit
AZTNF - Strategic Response / POD_65_Restore	34,953 acres	AZTNF		Unit
AZTNF - Strategic Response / POD_67_Exclude	3,506 acres	AZTNF		Unit
AZTNF - Strategic Response / POD_68_Restore	84,168 acres	AZTNF		Unit
AZTNF - Strategic Response / POD_69_Exclude	34,395 acres	AZTNF		Unit
AZTNF - Strategic Response / POD_70_Exclude	5,000 acres	AZTNF		Unit
AZTNF - Strategic Response / POD_74_Exclude	7,223 acres	AZTNF		Unit
AZTNF - Strategic Response / POD_77_Exclude	212 acres	AZTNF		Unit
AZTNF - Strategic Response / POD_80_Exclude	22,019 acres	AZTNF		Unit
AZTNF - Strategic Response / POD_82_Restore	102,586 acres	AZTNF		Unit
AZTNF - Strategic Response / POD_84_Exclude	170 acres	AZTNF		Unit
AZTNF - Strategic Response / POD_87_Exclude	1,114 acres	AZTNF		Unit
AZTNF - Strategic Response / POD_89_Exclude	547 acres	AZTNF		Unit
AZTNF - Strategic Response / POD_92_Exclude	464 acres	AZTNF		Unit
AZTNF - Wildlife / Bald Eagles	9	AZTNF		Unit
AZTNF - Wildlife / Gila topminnow	3	AZTNF		Unit
AZTNF - Wildlife / Golden Eagle	23 acres	AZTNF		Unit
AZTNF - Wildlife / Owl Cores	326 acres	AZTNF		Unit
AZTNF - Wildlife / Owl PACs	1,983 acres	AZTNF		Unit
AZTNF - Wildlife / SWFL	92 acres	AZTNF		Unit
AZTNF - Wildlife / SWFL CH	2,400 acres	AZTNF		Unit
AZTNF - Wildlife / Spikedace CH	7.9 miles	AZTNF		Unit
AZTNF - Wildlife / THEQ	153 acres	AZTNF		Unit
AZTNF - Wildlife / THEQ CH	1,187 acres	AZTNF		Unit
AZTNF - Wildlife / THsp Observations	1	AZTNF		Unit
AZTNF - Wildlife / YBCU	252 acres	AZTNF		Unit
AZTNF - Wildlife / YBCU CH	2,760 acres	AZTNF		Unit
Building Clusters: Gila, AZ	2,296	Various	Various	Available counties
Building Clusters: Maricopa, AZ	78	Various	Various	Available counties
Campgrounds	2	BLM (FAMS) and USFS INFRA	6/01/2018	National (BLM and USFS only)
Class 1 Airsheds	6 acres	NPS Air Resources Division	Various	National
Communication Towers	135	HIFLD	02/20/2020	National

Category	Value	Data Source	Currency	Coverage
County: Gila, AZ	112,034 acres	USFWS ECOS	2/10/2020	National
County: Maricopa, AZ	228,691 acres	USFWS ECOS	2/10/2020	National
Electric Power Plants	1	HIFLD Open Data (CONUS,PR), HSIP GOLD(AK,HI)	06/09/2017 (CONUS,PR), 2015(AK,HI)	National
Electric Sub Stations	2	HIFLD Open Data (CONUS,PR), HSIP GOLD(AK,HI)	07/24/2017 (CONUS,PR), 2015(AK,HI)	National
Electric Transmission Lines	41.4 miles	HIFLD Open Data (CONUS,PR), HSIP GOLD(AK,HI)	07/24/2017 (CONUS,PR), 2015(AK,HI)	National
Est Ground Evac Time: 1-2 Hrs	108,616 acres	National Park Service NIFC	11/01/2012	CONUS
Est Ground Evac Time: 2-4 Hrs	111,805 acres	National Park Service NIFC	11/01/2012	CONUS
Est Ground Evac Time: 4-6 Hrs	34,235 acres	National Park Service NIFC	11/01/2012	CONUS
Est Ground Evac Time: 6+ Hrs	7,414 acres	National Park Service NIFC	11/01/2012	CONUS
Habitat: Mexican Spotted Owl	92,786 acres	US Fish and Wildlife Service	02/01/2020	National
Habitat: Narrow-Headed Gartersnake	101 acres	US Fish and Wildlife Service	02/01/2020	National
Habitat: Northern Mexican Gartersnake	1,188 acres	US Fish and Wildlife Service	02/01/2020	National
Habitat: Southwestern Willow Flycatcher	2,397 acres	US Fish and Wildlife Service	02/01/2020	National
Habitat: Spikedace	8.0 miles	US Fish and Wildlife Service	02/01/2020	National
Habitat: Yellow-Billed Cuckoo	2,759 acres	US Fish and Wildlife Service	02/01/2020	National
IRA: Boulder Roadless Area	40,359 acres	USFS	03/08/2019	National
IRA: Goldfield Roadless Area	76 acres	USFS	03/08/2019	National
Landowner Category: BIA	29 acres	PAD-US 2.0, AICC, BIA/WFDSS, Census	03/12/2020	National
Landowner Category: Private	4,395 acres	PAD-US 2.0, AICC, BIA/WFDSS, Census	03/12/2020	National
Landowner Category: USFS	336,299 acres	PAD-US 2.0, AICC, BIA/WFDSS, Census	03/12/2020	National
Natl Scenic Byways	2.6 miles	NPS	2/28/2019	National
Natl Scenic Trails	41.8 miles	National Park Service	02/20/2020	National
Other Areas: Bush Highway	479 acres	USGS PADUS 1.4	03/13/2019	National
Other Areas: Three-Bar Watersheds Research Area, Plo 3263	1,738 acres	USGS PADUS 1.4	03/13/2019	National
Other Areas: Usdi Bureau Of Reclamation, Central Arizona Project, Orme Dam	369 acres	USGS PADUS 1.4	03/13/2019	National
Ozone Non-Attainment	229,178 acres	EPA	06/05/2012	National
Roads	109.4 miles	NAVTEQ	11/2012	National
USFS Buildings	35	USFS	2020	National
Wilderness: Four Peaks Wilderness	58,975 acres	Wilderness.net	01/31/19	National
Wilderness: Mazatzal Wilderness	3 acres	Wilderness.net	01/31/19	National

Coverage of Values Queried that Produced No Results

BLM Buildings (BLM Lands), BLM Horse and Burro (National), BLM Oil / Gas Leases (National), BLM Range Allotments (National), Mines (National), NPS Buildings (National), NRA (National), Natl Historic Trails (National), Natl Recreation Trails (National), Natl Wild Scenic Rivers (National), Oil and Gas Pipelines (National), Particulates Non-Attainment (National), Protecting Unit (AK, CA, ID, MT, NM, MN), Sage Grouse Habitat (National), TNC Lands (National), USFWS Trails (National), WSA (National)

1.6. Benefits

Benefits

Last updated by Mary Lata on 06/14/2020 01:36



Comments

If this fire is stopped before it reaches vegetation types at higher elevations that could benefit from fire, there will be no beneficial effects.

1.7. Objectives

Incident FMU/Strategic Objective Code List

Unit	FMU/Strat Obj Code	Acres
AZTNF	1E - Cave Creed RD Horseshoe and Bartlett Recreation Areas	2,934
AZTNF	1F - Cave Creek RD General Management Area	28,471
AZTNF	3A - Mesa RD Mazatzal Wilderness	6.3
AZTNF	3D - Mesa RD Four Peaks Wilderness	46,722
AZTNF	3E - Mesa RD Bush Highway Research Natural Area	516
AZTNF	3F - Mesa RD Lower Salt River Recreation Area	3,626
AZTNF	3H - Mesa RD Proposed Sycamore Creek and Blue Point Cottonwood Natural Areas	91
AZTNF	3I - Mesa RD General Management Area	138,764
AZTNF	6C - Tonto Basin RD Three Bar Wildlife Area	22,938
AZTNF	6D - Tonto Basin RD Buckhorn Mountain Research Natural Area	2,803
AZTNF	6E - Tonto Basin RD Haufer Wash Research Natural Area	752
AZTNF	6F - Tonto Basin RD Roosevelt and Apache Lakes Recreation Area	6,031
AZTNF	6I - Tonto Basin RD Four Peaks Wilderness	10,253
AZTNF	6J - Tonto Basin RD General Management Area	76,493

Spatial Fire Planning Inventory

Category	Value	Data Source	Currency	Coverage
Aqua Retardant Avoidance	19,242 acres	USDA FS Enterprise Data Warehouse	05/01/2019	National (USFS Units only)
Mgmt Req: Recreation Sites	6 acres	AZTNF	Current	Unit Level
Mgmt Req: Sonoran Desert	169,980 acres	AZTNF	Current	Unit Level
Retardant Avoidance	2,680 acres	USDA FS Enterprise Data Warehouse	04/2020	National (USFS Units only)

Incident Objective List

Activated	Incident Objective
06/15/2020	<ul style="list-style-type: none"> • Use a risk-based approach to provide for firefighter and emergency responder safety to the Bush wildfire while operating in a COVID-19 environment, being deliberate in committing resources only when there is a reasonable expectation of success in protecting life and critical property and infrastructure as we work towards containment of the fire. Assure that residual risk to first responders is acceptable as we meet the following incident objectives: • Closely coordinate with state and county emergency response cooperators and health services to reduce and mitigate risks to public safety from operational and environmental hazards associated with the Bush wildfire and the potential for COVID-19 exposure and transmission to and from the local communities. • The fire will receive full suppression response using all suppression strategies available to meet incident objectives as described in the pertinent WFDSS decision. The use of fire for resource benefit is not expected during this incident. <ul style="list-style-type: none"> ▪ Minimize fire impacts to residences, commercial properties, critical community infrastructure to reduce the potential for adverse health, social, financial, and economic hardships. These include (but not limited to): ▪ Communities: Ft McDowell, Tonto Basin and Punkin Center ▪ Highways SR-87, SR-188 and Bush HWY ▪ Recreational facilities and areas: Recreation sites along the Bush HWY, Saguaro Lake, Rolls OHV area, 4-Peaks Wilderness, Sugarloaf Recreation area, and Lower Sycamore area. ▪ Trails and Trailheads: Arizona Trail and Cottonwood, Cane Spring, Cline, Mud Spring, Lone Pine, Ballantine, Mills Ridge, Rock Creek, and Sycamore Trailheads. ▪ Diamond and Dos S Ranch ▪ Grazing allotments, permits, and related infrastructure • Minimize to the extent feasible smoke exposure to firefighters, communities, and other affected areas to reduce susceptibility to and consequences from COVID-19 exposure. • Ensure timely and accurate evacuation, fire, and smoke information is distributed to the public, partners, cooperators, affected outfitters and permittees, and state and local elected officials in order to leverage their capacity and expertise, and serve their functional needs and safety.

Incident Objective List

Activated	Incident Objective
	<ul style="list-style-type: none"> Provide mechanisms to actively monitor, address, and rapidly share lessons learned when varying COVID-19 implementation protocols interrupt effective and safe wildland fire suppression operations and/or cause conflicts among firefighters and crews.

Incident Requirement List

Activated	Incident Requirement
06/15/2020	<ul style="list-style-type: none"> Commit resources only when there is a reasonable expectation of success in protecting life and critical property and infrastructure, encourage innovation and the use of doctrine for local adaptations. Implement strategies and tactics that commit responders only to operations where and when they will have a reasonable probability of success and under conditions where important values at risk are protected with the least exposure necessary while maintaining relationships with the people we serve. In light of the ongoing COVID-19 pandemic you are expected to be familiar with and implement to the best of your ability the guidance described within the "Wildland Fire Response Plan COVID-19 Pandemic" as provided by the Southwest Geographic Area. This guidance which includes a variety of Best Management Practices (BMPs) represents a framework of considerations for use by the IMT, assigned resources and other personnel committed to the incident. Given the fact that your IMT will be among the first to implement many of the recommended BMP's, we expect a significant amount of dialogue in order to implement, monitor and adjust as necessary. It is expected that the IMT fully consider the guidance in its day to day operations and discuss the implementation and deviations with the Agency Administrators during the course of the incident. We will stand ready to engage with you and your team to assist and learn from your assignment. We ask your team provide mechanisms to actively monitor, address, and rapidly share lessons learned when varying COVID-19 implementation protocols interrupt effective and safe wildland fire suppression operations and/or cause conflicts among firefighters and crews. Notify Agency Administrators as soon as possible any possible COVID-19 exposure and isolations. Your team is to closely coordinate with the State of Arizona and/or County health services to reduce and mitigate risks to public safety from operational and environmental hazards associated with the Fire and the potential for COVID-19 exposure or complications. We are committed to the aggressive management of risk. Please utilize the doctrinal principles for fire suppression. We expect sound rational judgment in the application of strategies and tactics to accomplish the tasks we have given you. There are no resource or facility values that are worth the cost of human life. We do recognize that there are inherent risks that cannot be eliminated. Your task is to minimize those risks and limit our exposure to them, to include minimizing responder exposure to COVID-19 transmission by utilizing risk management in all facets of fire suppression. Please ensure that all assigned firefighting personnel receive adequate rest and that guidelines are followed. Ensure that the 10 standard orders are followed and adhered to by every firefighter, and that the 18 watch out situations will be continually evaluated through clear concise direction and understanding of assignments and mitigated as needed. The Planning Area encompasses Federal lands under the jurisdiction of the Tonto National Forest, Tonto National Monument and the Bureau of Land Management (Phoenix District, Lower Sonoran Field Office) as well as State and Private lands within Maricopa, Pinal and Gila counties.

Strategic Objective List

Unit	Shape/ FMU	Activated	Strategic Objective
AZTNF	<Unit>	08/17/2013	On all Class E or bigger fires, an Interdisciplinary (ID) team will determine the need for fire rehabilitation and resource protection, including the option for assigning a Burned Area Rehabilitation Team (BAER Team).
AZTNF	1E	05/22/2014	All suppression efforts will emphasize minimum impact strategies. Use of mechanized equipment for fireline construction is discouraged. Where use is necessary, rehabilitation will be implemented.
AZTNF	1E	05/22/2014	<p>All reported wildland fires will receive a strategic fire size-up. Wildland fires meeting locally developed operating guidelines listed below may be managed for resource benefit:</p> <ol style="list-style-type: none"> 1. Fire cause is from a natural ignition 2. Fire does not threaten life, property, public, and firefighter safety. 3. Fire does not threaten fire sensitive cultural resources. 4. ADEQ, Air Quality Division procedures and guidelines for consultation and management of smoke will be implemented. 5. Wildland Fire managed for resource benefit must meet Tonto, Regional, and National fire situation parameters. 6. No site specific resource objective is threatened.

Strategic Objective List

Unit	Shape/ FMU	Activated	Strategic Objective
AZTNF	1F	05/22/2014	All suppression efforts will emphasize minimum impact strategies. Use of mechanized equipment for fireline construction is discouraged. Where use is necessary, rehabilitation will be implemented.
AZTNF	1F	05/22/2014	All reported wildland fires will receive a strategic fire size-up. Wildland fires meeting locally developed operating guidelines listed below may be managed for resource benefit: <ol style="list-style-type: none"> 1. Fire cause is from a natural ignition 2. Fire does not threaten life, property, public, and firefighter safety. 3. Fire does not threaten fire sensitive cultural resources. 4. ADEQ, Air Quality Division procedures and guidelines for consultation and management of smoke will be implemented. 5. Wildland Fire managed for resource benefit must meet Tonto, Regional, and National fire situation parameters. 6. No site specific resource objective is threatened.
AZTNF	3A	08/17/2013	All suppression efforts will emphasize minimum impact strategies. Use of mechanized equipment for fireline construction is discouraged. Where use is necessary, rehabilitation will be implemented.
AZTNF	3A	08/17/2013	All reported wildland fires will receive a strategic fire size-up. Wildland fires meeting locally developed operating guidelines listed below may be managed for resource benefit: <ol style="list-style-type: none"> 1. Fire cause is from a natural ignition 2. Fire does not threaten life, property, public and firefighter safety. 3. Fire does not threaten fire sensitive cultural resources. 4. ADEQ, Air Quality Division procedures and guidelines for consultation and management of smoke will be implemented. 5. Wildland Fire managed for resource benefit must meet Tonto, Regional, and National fire situation parameters. 6. No site specific resource objective is threatened.
AZTNF	3D	08/17/2013	All suppression efforts will emphasize minimum impact strategies. Use of mechanized equipment for fireline construction is discouraged. Where use is necessary, rehabilitation will be implemented.
AZTNF	3D	08/17/2013	All reported wildland fires will receive a strategic fire size-up. Wildland fires meeting locally developed operating guidelines listed below may be managed for resource benefit: <ol style="list-style-type: none"> 1. Fire cause is from a natural ignition 2. Fire does not threaten life, property, public and firefighter safety. 3. Fire does not threaten fire sensitive cultural resources. 4. ADEQ, Air Quality Division procedures and guidelines for consultation and management of smoke will be implemented. 5. Wildland Fire managed for resource benefit must meet Tonto, Regional, and National fire situation parameters. 6. No site specific resource objective is threatened.
AZTNF	3E	08/17/2013	Suppress all fires while considering costs, firefighter risk, and values at risk
AZTNF	3F	08/17/2013	All reported wildland fires will receive a strategic fire size-up. Wildland fires meeting locally developed operating guidelines listed below may be managed for resource benefit: <ol style="list-style-type: none"> 1. Fire cause is from a natural ignition 2. Fire does not threaten life, property, public and firefighter safety. 3. Fire does not threaten fire sensitive cultural resources. 4. ADEQ, Air Quality Division procedures and guidelines for consultation and management of smoke will be implemented. 5. Wildland Fire managed for resource benefit must meet Tonto, Regional, and National fire situation parameters. 6. No site specific resource objective is threatened.
AZTNF	3H	08/17/2013	Suppress all fires while considering costs, firefighter risk, and values at risk
AZTNF	3I	08/17/2013	Prevent Wildland Fire from destroying developed recreation improvements, including a five-chain wide buffer surrounding them.
AZTNF	3I	08/17/2013	All reported wildland fires will receive a strategic fire size-up. Wildland fires meeting locally developed operating guidelines listed below may be managed for resource benefit: <ol style="list-style-type: none"> 1. Fire cause is from a natural ignition 2. Fire does not threaten life, property, public and firefighter safety. 3. Fire does not threaten fire sensitive cultural resources. 4. ADEQ, Air Quality Division procedures and guidelines for consultation and management of smoke will be implemented.

Strategic Objective List

Unit	Shape/FMU	Activated	Strategic Objective
			5. Wildland Fire managed for resource benefit must meet Tonto, Regional, and National fire situation parameters. 6. No site specific resource objective is threatened.
AZTNF	6F	09/05/2013	Resource benefit optional - management of fire for resource benefits can be considered
AZTNF	6F	09/05/2013	For each wildland fire located in an FMU approved for wildland fire use and naturally ignited, a decision criteria checklist will be prepared to determine whether or not it should be declared a Wildland Fire use candidate.
AZTNF	6F	09/05/2013	All reported wildland fires will receive a strategic fire size-up. Wildland fires meeting locally developed operating guidelines listed below may be managed for resource benefit: <ol style="list-style-type: none"> 1. Fire cause is from a natural ignition 2. Fire does not threaten life, property, public and firefighter safety. 3. Fire does not threaten fire sensitive cultural resources. 4. ADEQ, Air Quality Division procedures and guidelines for consultation and management of smoke will be implemented. 5. Wildland Fire managed for resource benefit must meet Tonto, Regional, and National fire situation parameters. 6. No site specific resource objective is threatened.
AZTNF	6F	09/05/2013	Designated Wildland Fires managed for resource benefit will be monitored according to established guidelines.
AZTNF	6F	09/05/2013	Suppression of fires, or portions thereof, will be undertaken where they adversely affect forest resources, endanger public safety and/or have a potential to damage private lands
AZTNF	6J	09/05/2013	All reported wildland fires will receive a strategic fire size-up. Wildland fires meeting locally developed operating guidelines listed below may be managed for resource benefit: <ol style="list-style-type: none"> 1. Fire cause is from a natural ignition 2. Fire does not threaten life, property, public and firefighter safety. 3. Fire does not threaten fire sensitive cultural resources. 4. ADEQ, Air Quality Division procedures and guidelines for consultation and management of smoke will be implemented. 5. Wildland Fire managed for resource benefit must meet Tonto, Regional, and National fire situation parameters. 6. No site specific resource objective is threatened.
AZTNF	6J	09/05/2013	Designated Wildland Fires managed for resource benefit will be monitored according to established guidelines.
AZTNF	6J	09/05/2013	For each wildland fire located in an FMU approved for wildland fire use and naturally ignited, a decision criteria checklist will be prepared to determine whether or not it should be declared a Wildland Fire use candidate.
AZTNF	6J	09/05/2013	Suppression of fires, or portions thereof, will be undertaken where they adversely affect forest resources, endanger public safety and/or have a potential to damage private lands

Management Requirement List

Unit	Shape/FMU	Activated	Management Requirement
	Aqua Retardant Avoidance	06/18/2013	The aerial application of fire retardant is allowed for fighting fires. Aerially delivered fire retardant should not be applied to any mapped aquatic avoidance area, waterway or buffer. The only exception to using aerially applied fire retardant in avoidance areas is for the protection of human life or public safety . The Incident Commander is the decision maker. Information concerning the Record of Decision for the Aerial Application of Fire Retardant is available at https://www.fs.fed.us/fire/retardant/index.html
	Retardant Avoidance	05/31/2012	The aerial application of fire retardant is allowed for fighting fires. Aerially delivered fire retardant should not be applied to any mapped terrestrial avoidance area, waterway or buffer. The only exception to using aerially applied fire retardant in avoidance areas is for the protection of human life or public safety . The Incident Commander is the decision maker. Information concerning the Record of Decision for the Aerial Application of Fire Retardant is available at https://www.fs.fed.us/fire/retardant/index.html
AZTNF	<Unit>	08/17/2013	Management activities will be planned so that air quality will equal to or better than that required by applicable Federal, State, and local standards or regulations.

Management Requirement List

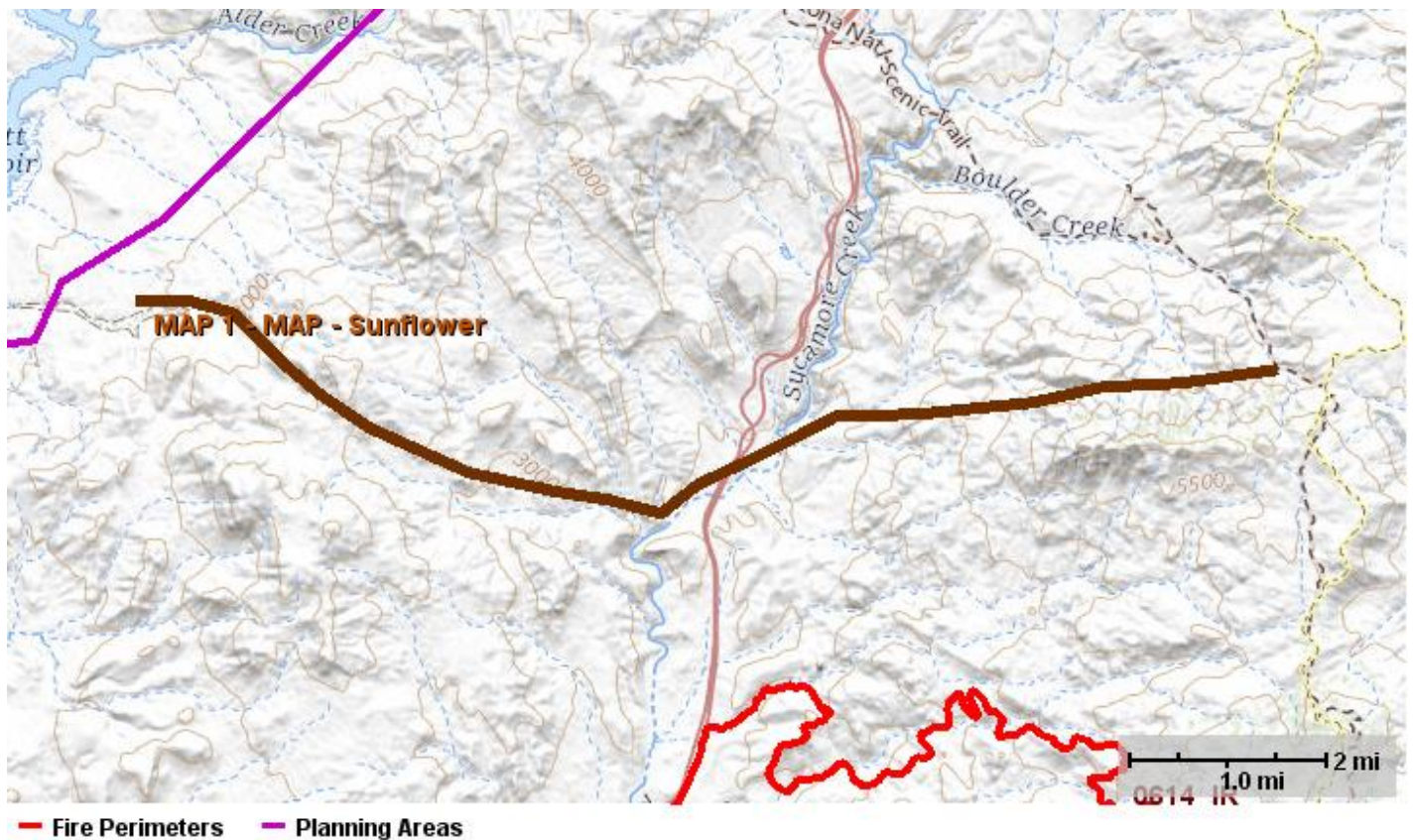
Unit	Shape/FMU	Activated	Management Requirement
AZTNF	<Unit>	09/05/2013	Wildland Fires threatening the Wildland/Urban Interface will have high suppression priority
AZTNF	Recreation Sites	09/05/2013	Prevent Wildland Fire from destroying developed recreation improvements, including a five-chain wide buffer surrounding them.
AZTNF	Sonoran Desert	09/05/2013	Wildland Fire occurring within the Sonoran Desert and riparian communities will receive an appropriate management response. Suppression strategy is to minimize damage within this ecosystem.

1.8. Course of Action

Course of Action

Active	Inactive	Action Item
06/15/2020		<ul style="list-style-type: none"> • Firefighter and public safety remains priority over all other incident objectives and requirements. Include appropriate COVID 19 mitigation measures for firefighters, overhead team staff and others to minimize health impacts. • Make reasonable, prudent and timely risk-based decisions to accomplish specific fire suppression, monitoring and/or other management actions while minimizing exposure to hazards. Specific hazards to be aware of on this incident include steep terrain, flammable fuels, extreme air temperatures, extended burn periods, and low RH values during the burning period. • Consider smoke impacts to the public, natural/cultural resources and infrastructure values as well as to social and economic values when developing strategic planning efforts and the opportunities to mitigate the smoke impacts. • Maintain timely communications with all agencies, cooperators and landowners. Coordinate closures (roads, trails, recreation areas) and evacuations with the appropriate officials and communicate those closures/evacuations in a timely fashion with the public and stakeholders.

Management Action Point 1



NAME	VALUE
Incident Name	Bush
Cost	\$250,000
Shape	MAP - Sunflower
Activated	06/15/2020
Deactivated	
Status	Active

Condition

MAP Description: The location of this MAP is along Log Corral Canyon from the west to east until it meets SR-87 and then continues along the FS104 north of boulder mountain where it connects with FS422.

Intent: If fire becomes established west of SR87 or threatens this MAP. Notify the Power company (APS), landowners on the private land adjacent to Forest. The intent of this MAP is to protect APS powerlines and pre-evac notifications for Sunflower Estates, Diamond

Ranch and Cross F Ranch.

Values at Risk:

Probability: 80-100% Very High (Determined from FS PRO)

- APS - KV Powerlines
- Private structures (Sunflower, Jake's Corner)
- Ord Lookout and Communications site
- Ord mountain private inholdings
- Cultural resources
- T&E Species
- Forest Service infrastructure

Actions

Notifications:

Recommended Management Action:

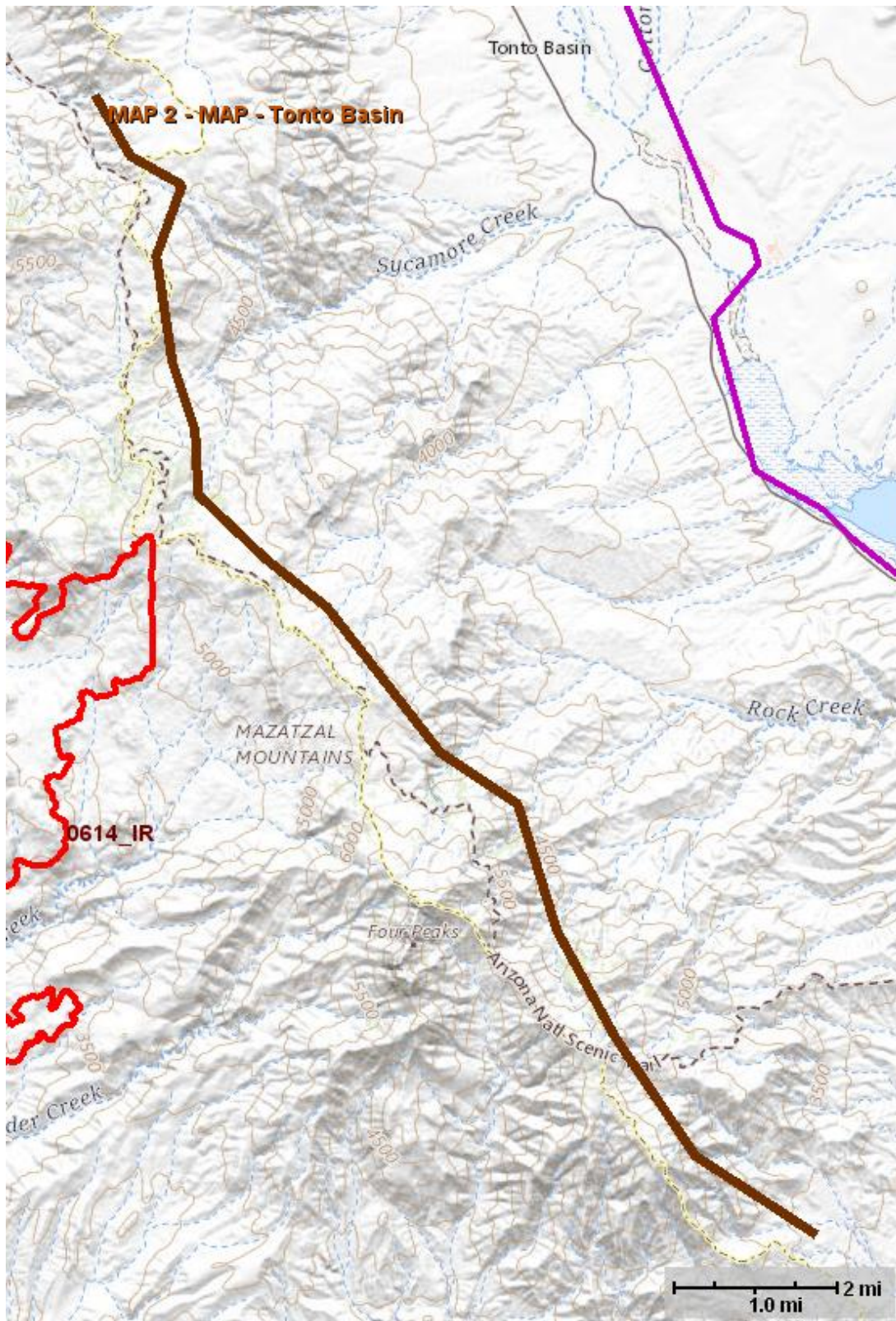
- Forest Agency Administrators and Fire Managers
- Notifying DPS
- Notifying APS
- Sunflower Estates
- Diamond Ranch
- Cross F Ranch
- Consider pre-evac notifications or evacuations of private lands and ranches to the North of the fire (dependent on fire Fire weather and behavior in conjunction with suppression efforts).
- Consider prepping powerlines with APS.
- Evaluate current planning area and IMT organization

Resources

Recommended:

- Consider ordering more resources (Engines, Handcrews, Equipment and Aviation)

Management Action Point 2



NAME	VALUE
Incident Name	Bush
Cost	\$800,000
Shape	MAP - Tonto Basin
Activated	06/15/2020

Deactivated
Status Active

Condition

MAP Description: The location of this MAP is north of Edwards Peak moving south on the east side of FS422 continuing all the way to Apache Lake.

Intent: If fire becomes established east of FS422 or threatens this MAP. Consider pre-evac and evacuation notices for Tonto Basin area and Punkin Center.

Values at Risk:

Probability: 80-100% Very High (Determined from FS PRO)

- Tonto Basin and Punkin Center communities
- Private structures
- Communications sites
- Cultural resources
- T&E Species
- Forest Service infrastructure

Actions

Notifications:

Recommended Management Action:

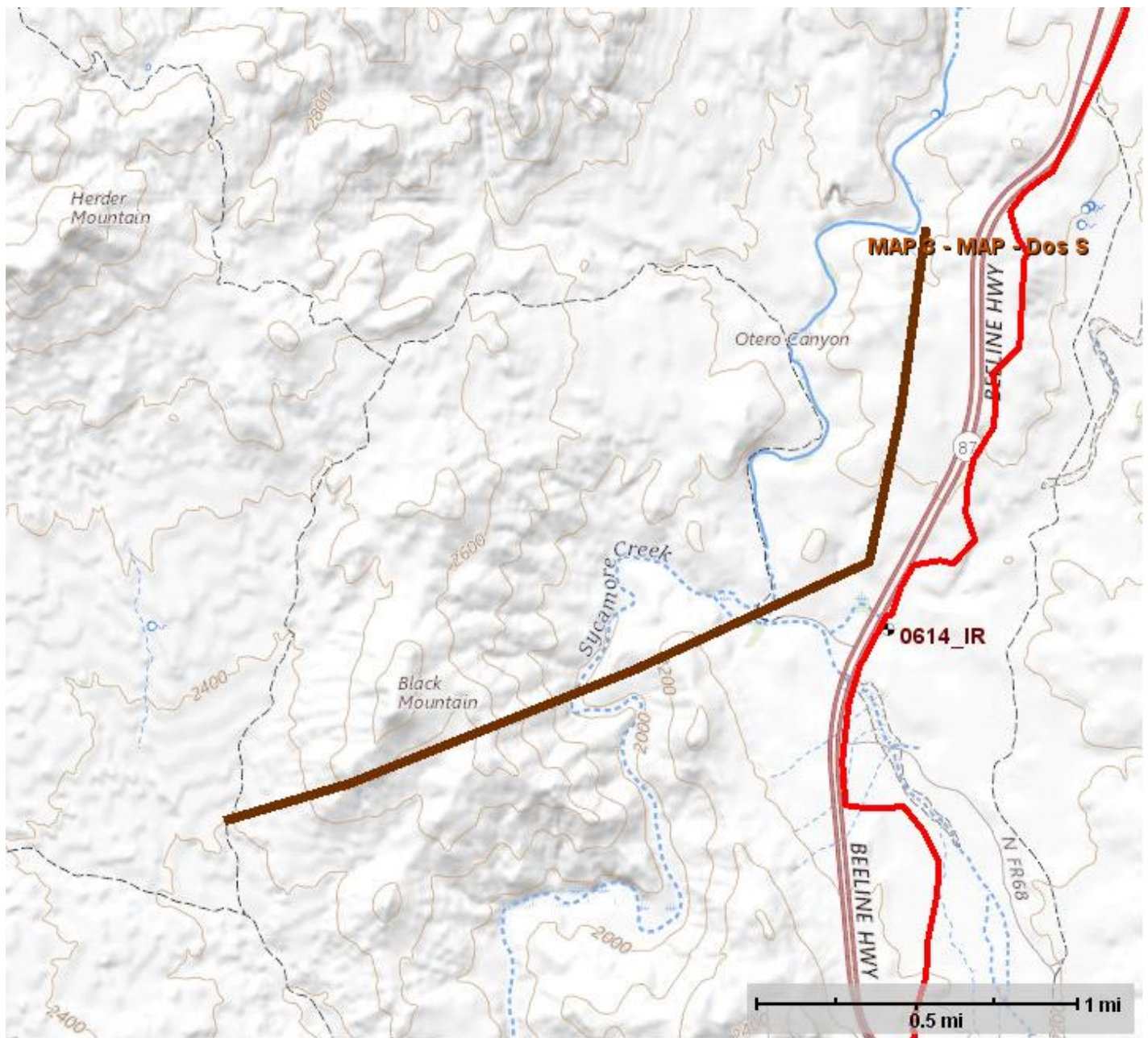
- Forest Agency Administrators and Fire Managers
- Notifying DPS
- Gila County Sherriff
- Consider pre-evac notifications or evacuations of Tonto Basin, Punkin Center communities and surrounding areas (dependent on Fire weather and behavior in conjunction with suppression efforts).
- Consider indirect attack and aviation suppression options to reduce fire impacts into Tonto Basin
- Evaluate current planning area and IMT organization

Resources

Recommended:

- Consider ordering more resources (Engines, Handcrews, Equipment and Aviation)

Management Action Point 3



— Fire Perimeters — Planning Areas

NAME	VALUE
Incident Name	Bush
Cost	\$100,000
Shape	MAP - Dos S
Activated	06/15/2020
Deactivated	
Status	Active

Condition

MAP Description: The location of this MAP is south of the Dos S ranch on the West side of SR87 moving west to Black Mountain.
Intent: If fire becomes established west of FS87 or threatens this MAP south of the Dos S ranch. Consider evacuation of Dos S ranch.

Values at Risk:

Probability: 80-100% Very High (Determined from FS PRO)

- Dos S ranch
- Private structures
- Cultural resources

Actions

Notifications:

Recommended Management Action:

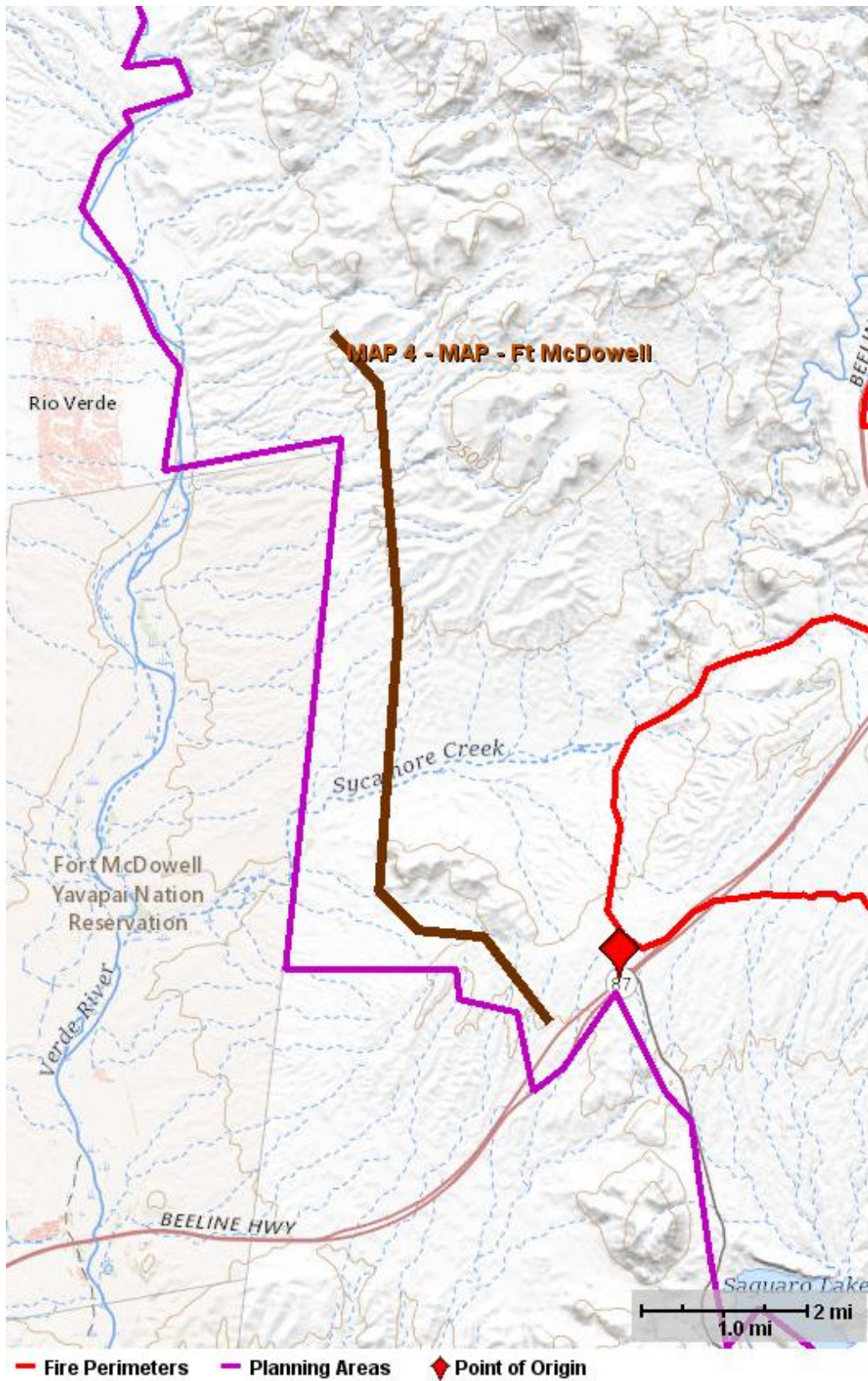
- Forest Agency Administrators and Fire Managers
- Notifying DPS
- Dos S Ranch
- Notify and consider evacuations for Dos S ranch.
- Consider indirect attack and aviation suppression areas.
- Evaluate current planning area and IMT organization.

Resources

Recommended:

- Consider ordering more resources (Engines, Handcrews, Equipment and Aviation)

Management Action Point 4



NAME	VALUE
Incident Name	Bush
Cost	\$100,000
Shape	MAP - Ft McDowell

Activated	06/15/2020
Deactivated	
Status	Active

Condition

MAP Description: The location of this MAP is west of the fire traveling north to south just east of the Ft. McDowell Yavapai Nation.

Intent: If fire crosses or threatens the MAP, notify Ft. McDowell Agency Administrators and Fire Managers.

Values at Risk:

Probability: .2-4.9% Very Low (Determined from FS PRO)

- Communities of Ft. McDowell, Fountain Hills and other private inholdings

Actions

Notifications:

Recommended Management Action:

- Forest Agency Administrators and Fire Managers
- McDowell (BIA) Agency Administrators and Fire Managers
- Notifying DPS
- Private lands and communities
- Consider pre-evac notifications Private inholdings along SR87, Ft McDowell and surrounding areas near Fountain Hills. (dependent on fire Fire weather and behavior in conjunction with suppression efforts).
- Consider indirect attack options to reduce fire impacts to the Verde River and riparian areas.
- Evaluate current planning area and IMT organization

Resources

Recommended:

- Consider ordering more resources (Engines, Handcrews, Equipment and Aviation)

1.9. Cost

Estimated Final Cost

NAME	VALUE
Estimated Final Cost	\$6,000,000
Method(s) Used	Other

1.10. Rationale

Bush Fire Rationale - 06-15-2020

In close coordination with State of AZ - Department of Forestry and Fire officials, who also have jurisdictional responsibilities within the planning area, the decision to utilize a full-suppression strategy is appropriate. The values at risks (VARs) have been discussed and identified. Risk based decisions to achieve full suppression should be utilized that prioritize the health and safety of assigned resources and the public, protection of identified VARs, and impacts to the natural and heritage resources. Incident management actions are being implemented during the COVID-19 pandemic and mitigation measures should be implemented to minimize risk and exposure to assigned resources, the communities affected by the incident and other persons engaged in management activities.