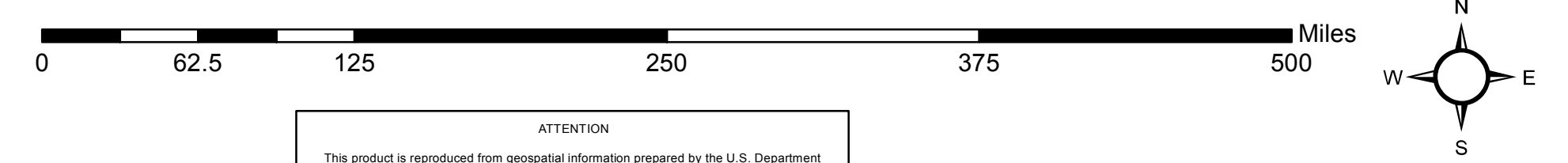


Fire Retardant Intrusion Locations

USFS Region 8

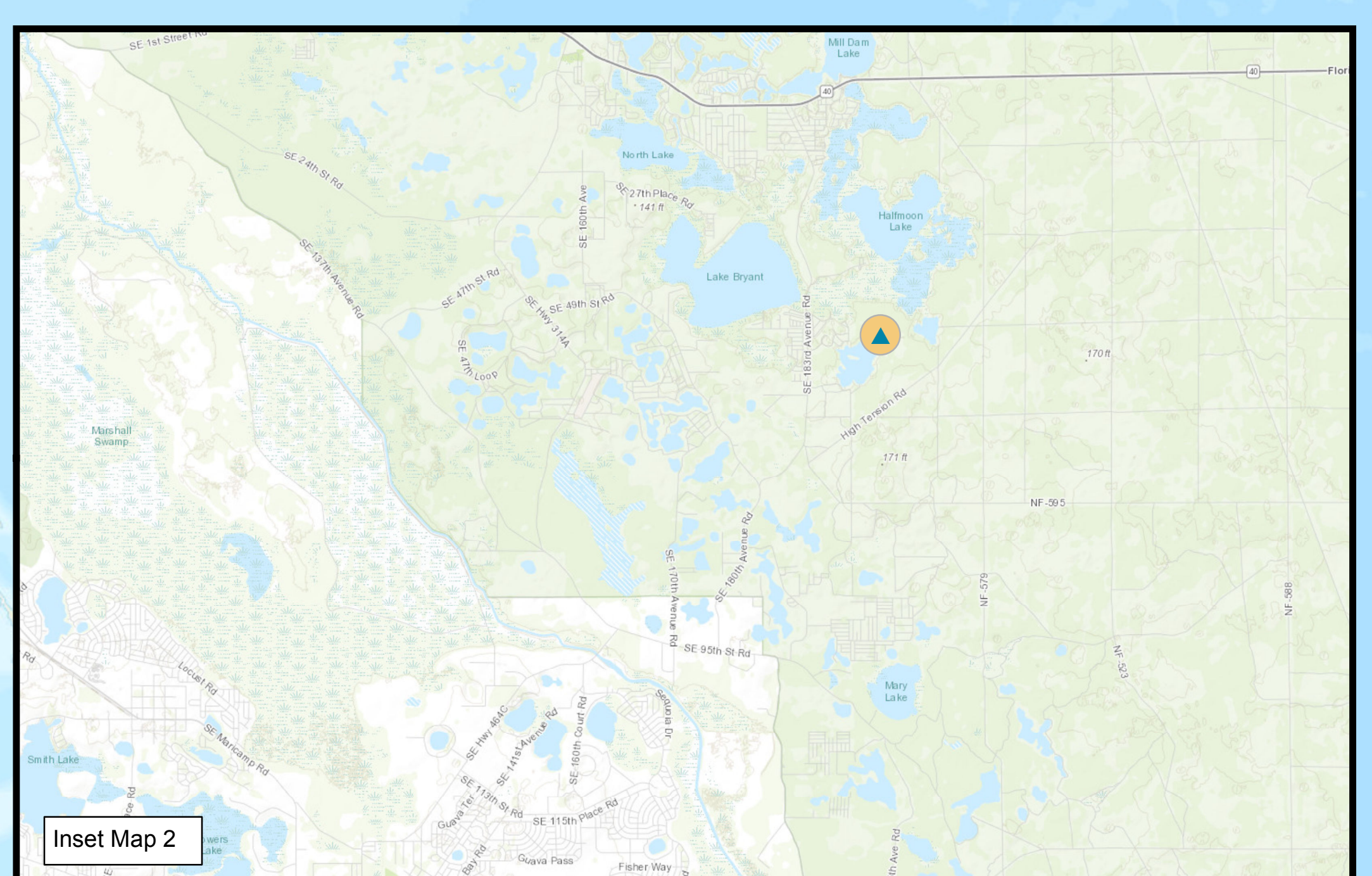
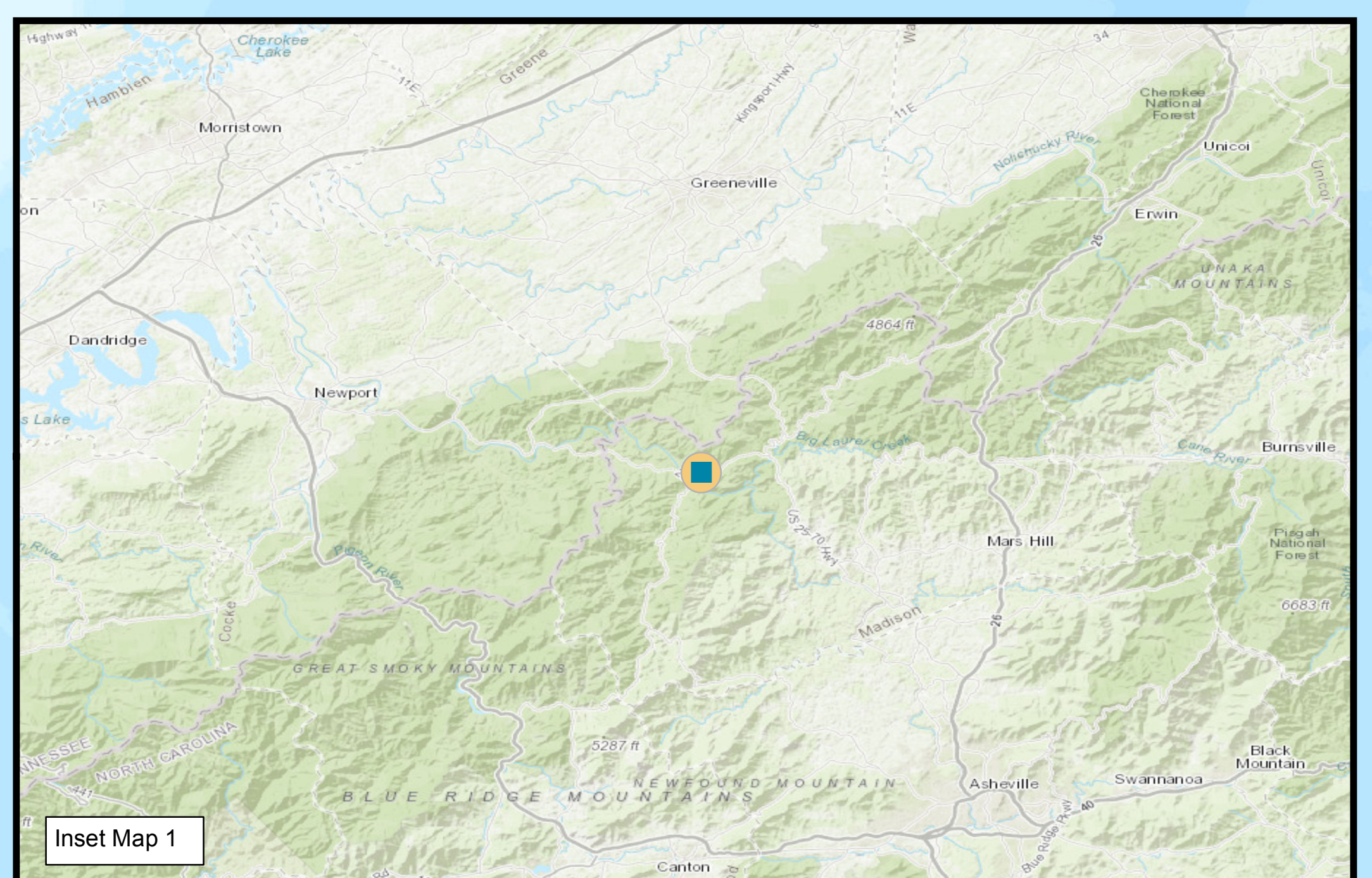
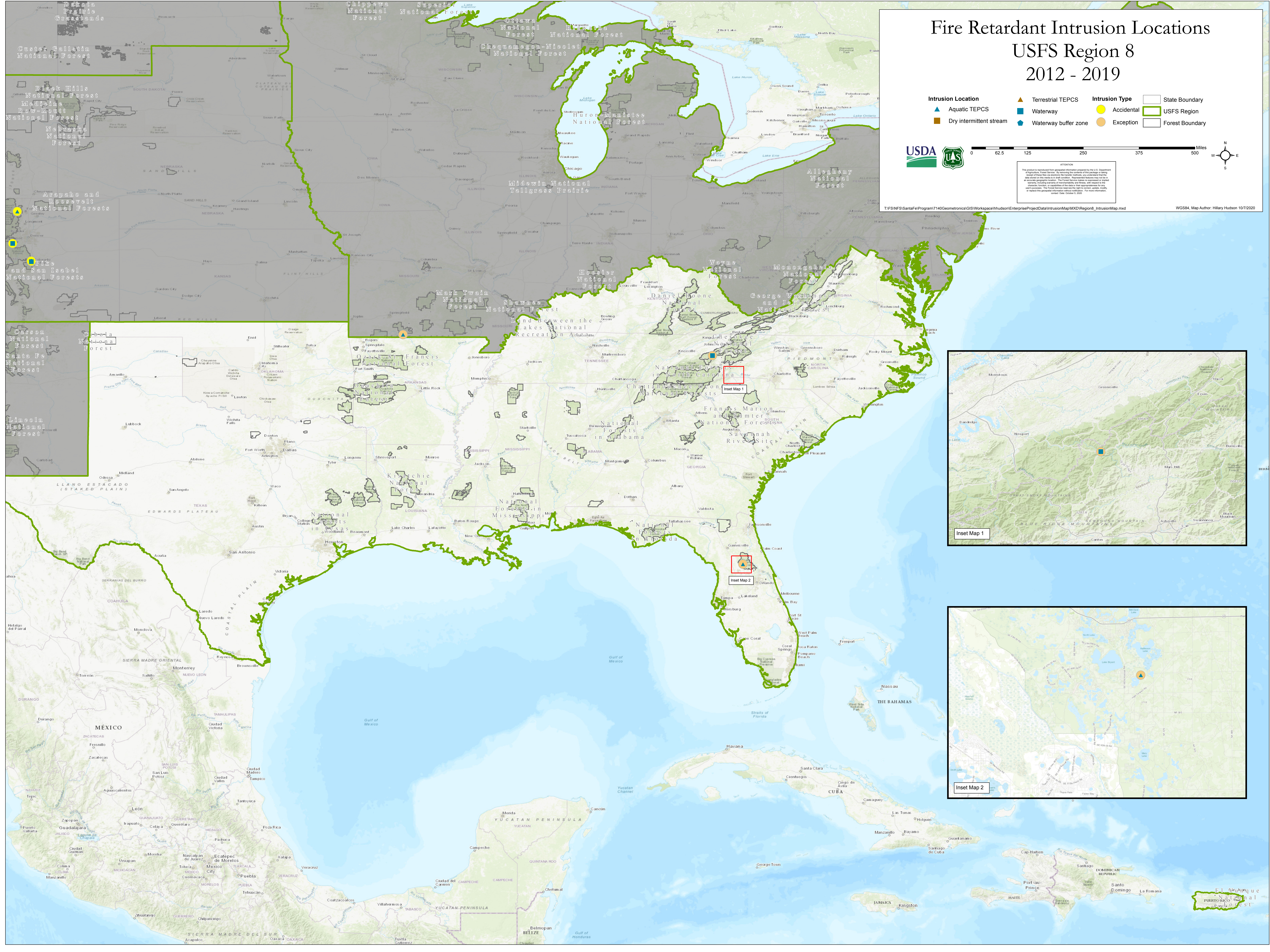
2012 - 2019

- | | | | |
|---------------------------|--------------------------|-----------------------|-----------------------|
| Intrusion Location | Terrestrial TEPCS | Intrusion Type | State Boundary |
| ▲ Aquatic TEPCS | ■ Waterway | ● Accidental | ▭ USFS Region |
| ■ Dry intermittent stream | ■ Waterway buffer zone | ● Exception | ▭ Forest Boundary |



ATTENTION
 This product is reproduced from geospatial information provided by the U.S. Department of Agriculture, Forest Service. It is intended for informational purposes only. The user assumes all liability for any use of this product. The Forest Service does not warrant the accuracy, reliability, or completeness of the information provided. The Forest Service does not assume any liability for any use of this product. The Forest Service does not assume any liability for any use of this product. The Forest Service does not assume any liability for any use of this product.

T:\FS\NFS\SantaFe\Program7140\Geometrical\GIS\Workspace\hudson\EnterpriseProject\Data\IntrusionMap\MXD\Region8_IntrusionMap.mxd WGS84, Map Author: Hillary Hudson 10/7/2020



El Yunque National Forest