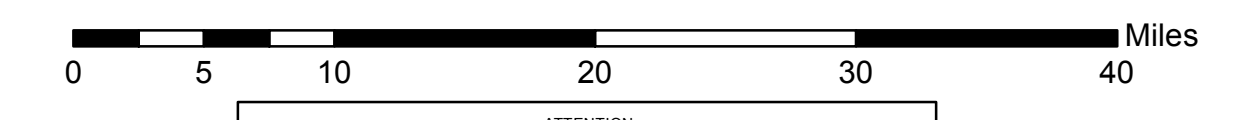
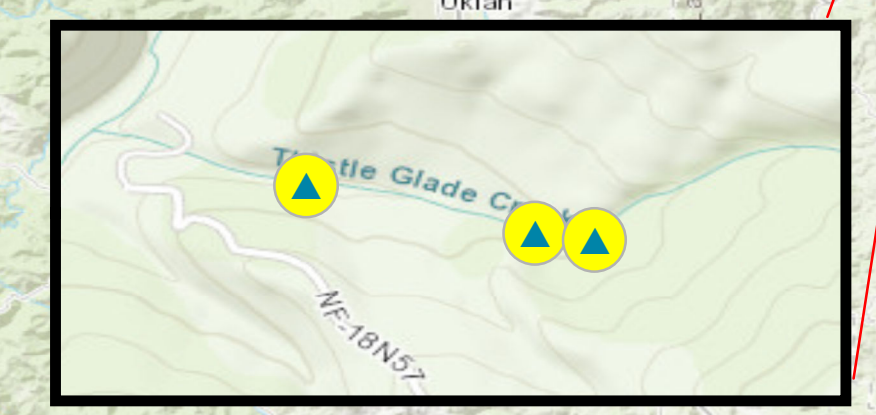
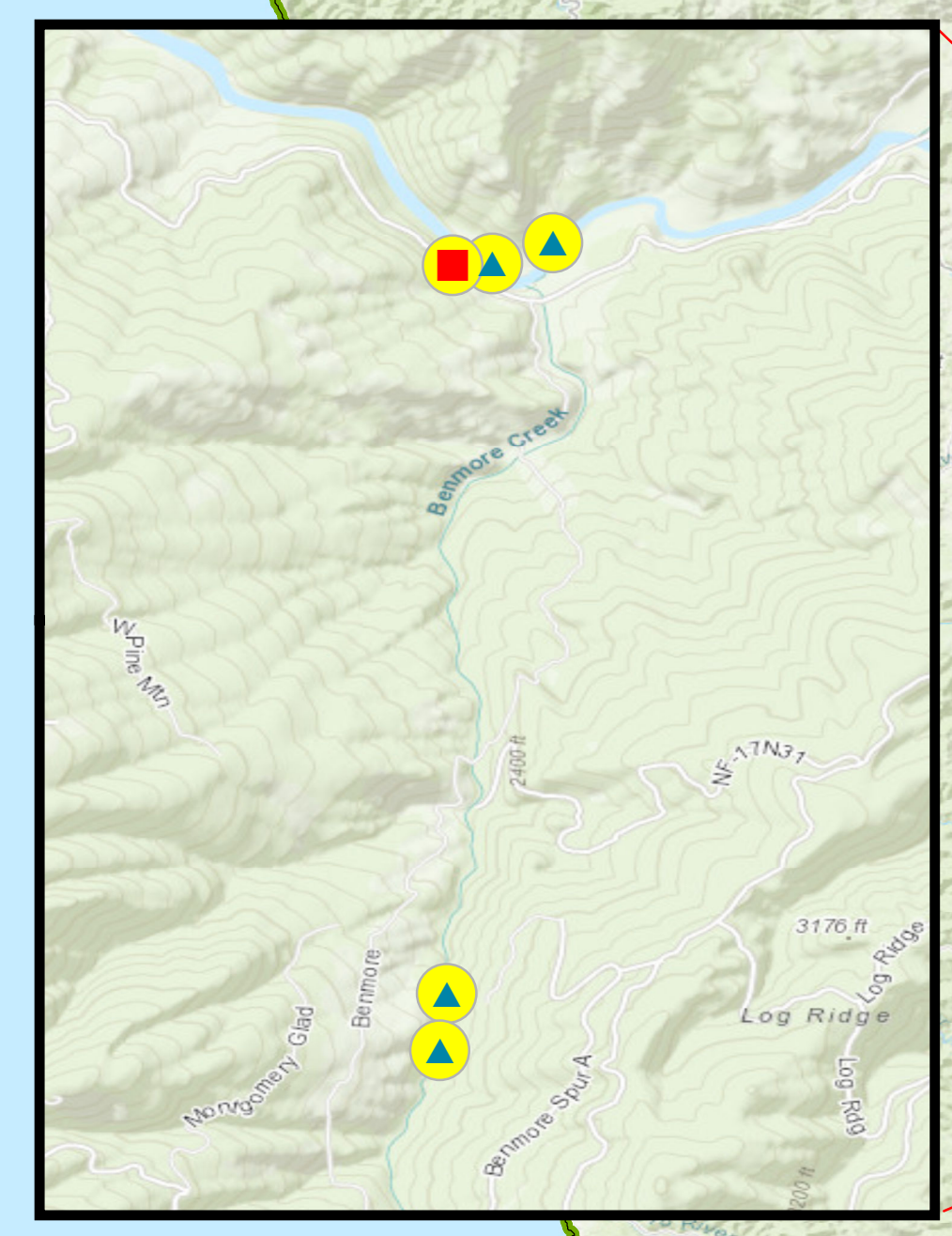
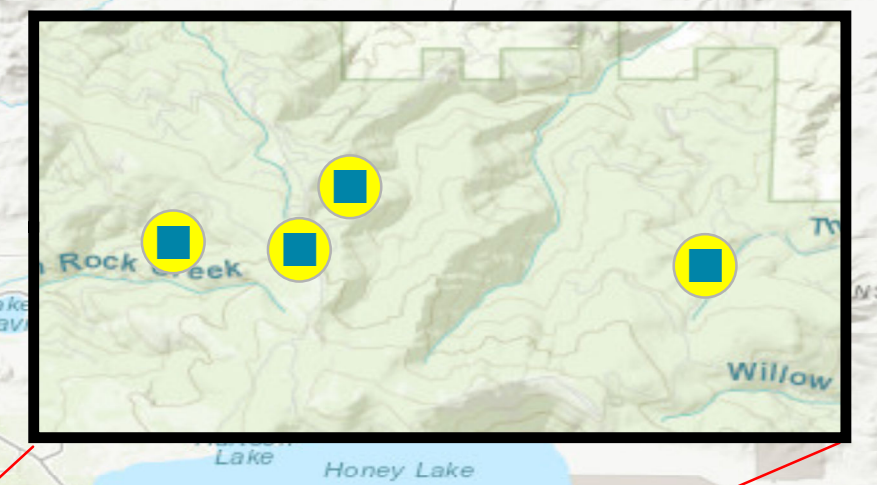
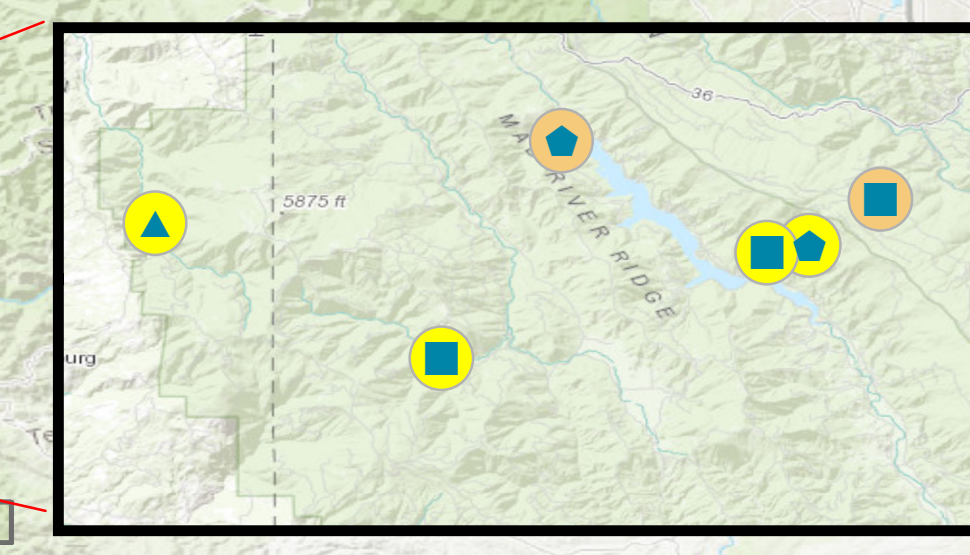
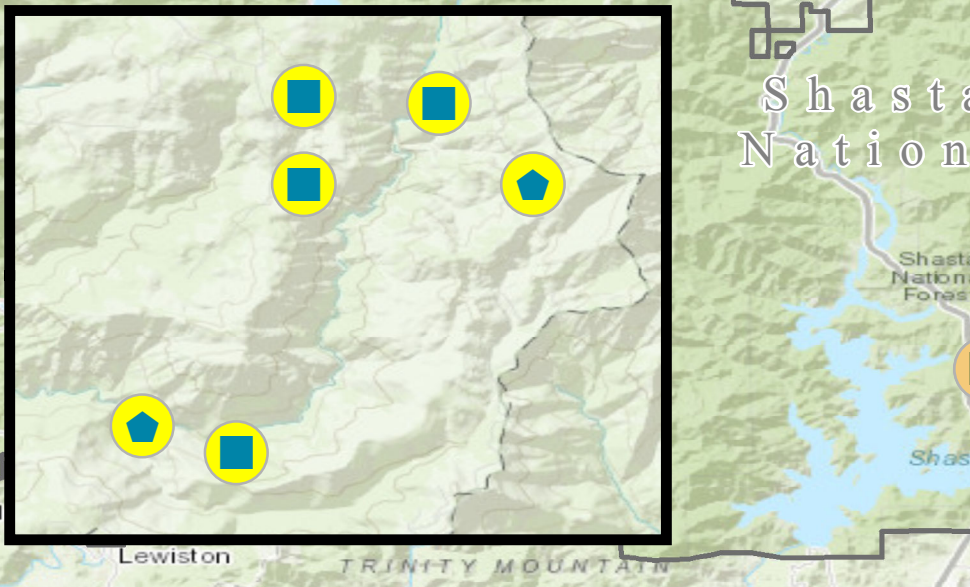
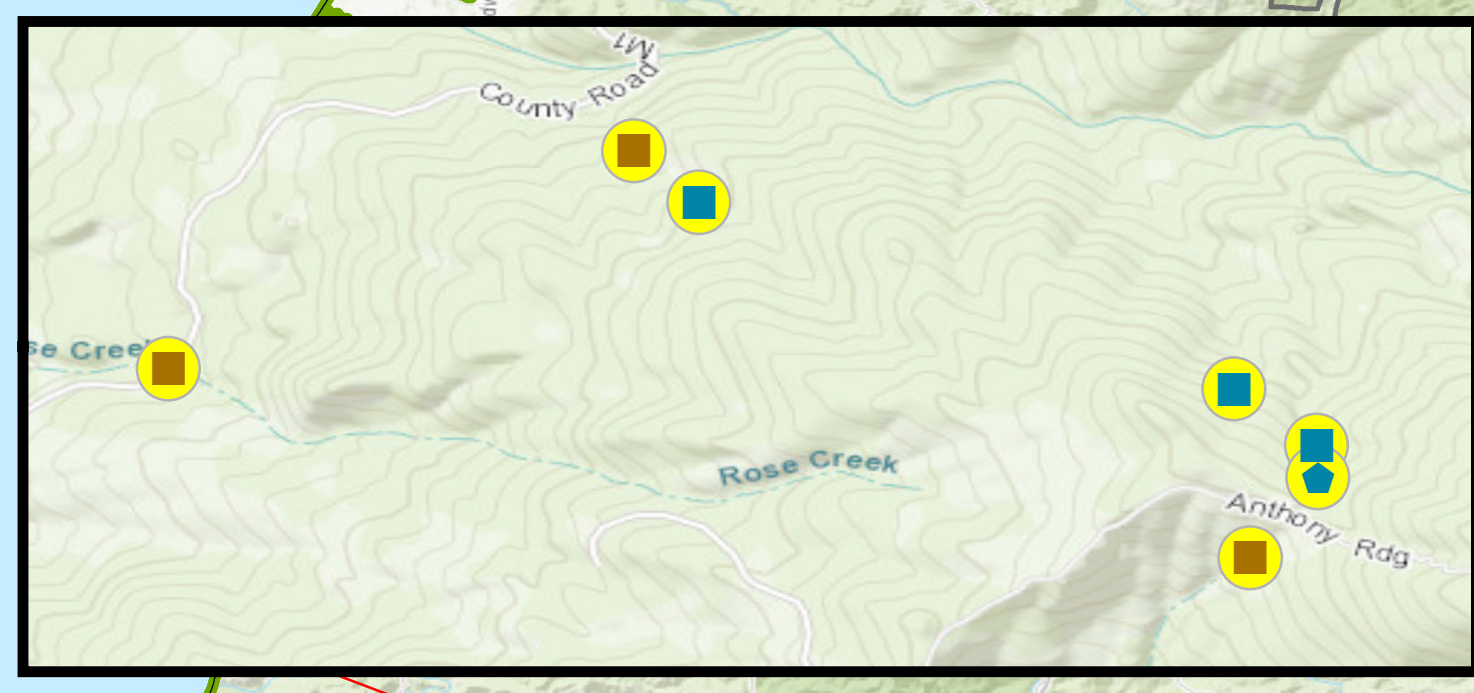
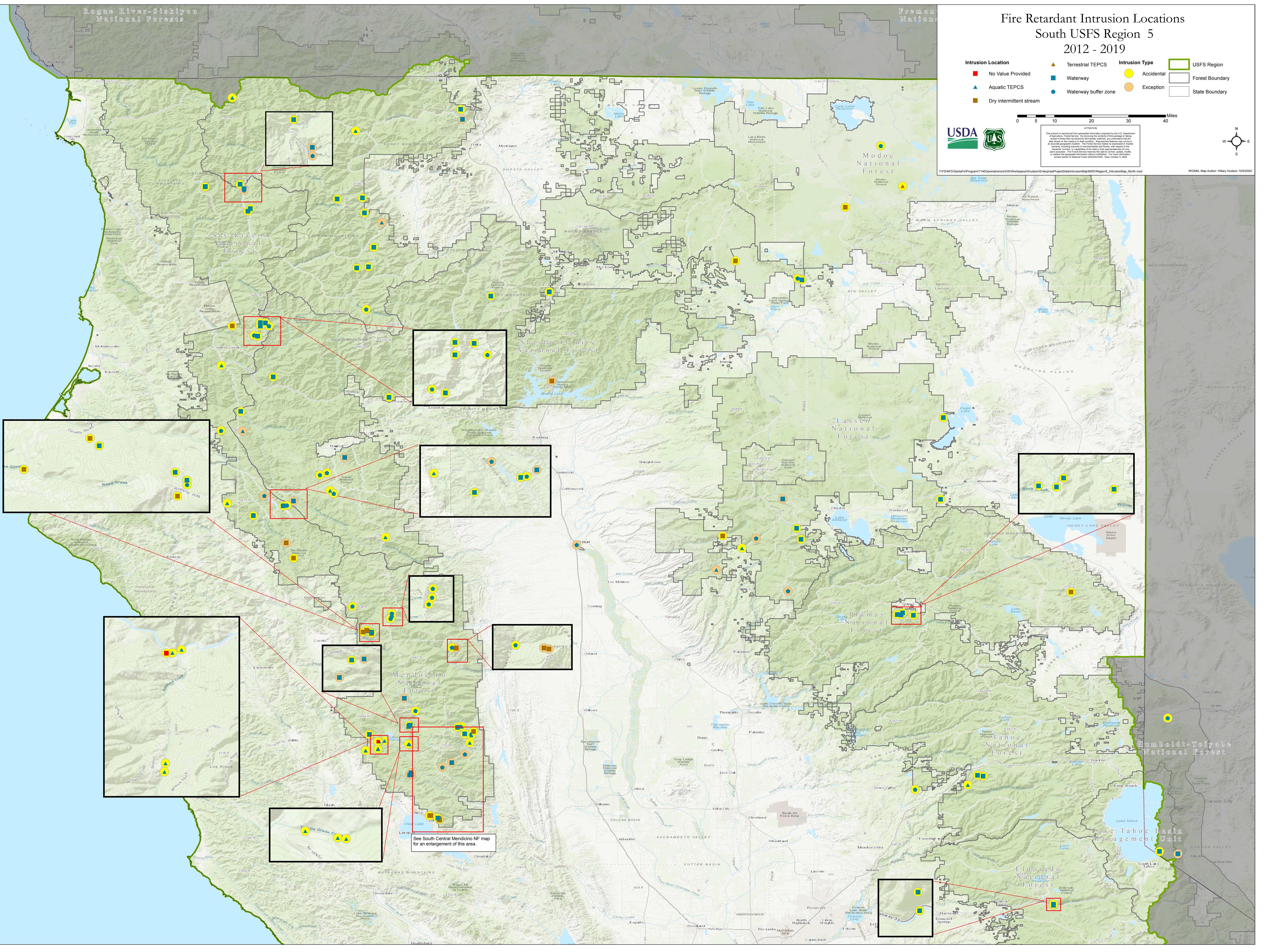
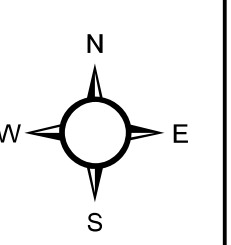


Fire Retardant Intrusion Locations South USFS Region 5 2012 - 2019

- | | | |
|---------------------------|-----------------------|--------------------|
| Intrusion Location | Intrusion Type | USFS Region |
| ■ No Value Provided | ● Accidental | ▭ Forest Boundary |
| ▲ Aquatic TEPCS | ● Exception | ▭ State Boundary |
| ■ Terrestrial TEPCS | | |
| ■ Waterway | | |
| ■ Waterway buffer zone | | |
| ■ Dry intermittent stream | | |



The product is intended for informational purposes only. It is not intended for use in any legal proceeding. The user assumes all liability for any use of this product. The user agrees to indemnify and hold the USFS harmless from any and all claims, damages, and expenses, including reasonable attorneys' fees, arising from any use of this product. The USFS does not warrant the accuracy, completeness, or timeliness of the information contained in this product. The USFS is not responsible for any errors or omissions in this product. The USFS is not responsible for any consequences arising from the use of this product. The USFS is not responsible for any loss of data or information. The USFS is not responsible for any damage to equipment or property. The USFS is not responsible for any injury or death. The USFS is not responsible for any other damages. The USFS is not responsible for any other losses. The USFS is not responsible for any other consequences. The USFS is not responsible for any other damages. The USFS is not responsible for any other losses. The USFS is not responsible for any other consequences.



See South Central Mendocino NF map for an enlargement of this area.

