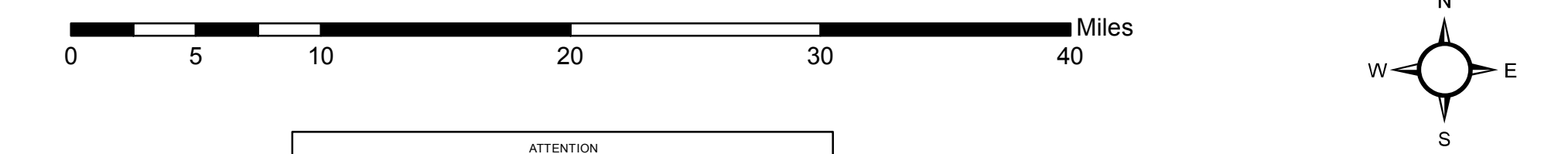


Fire Retardant Intrusion Locations

USFS Region 3

2012 - 2019

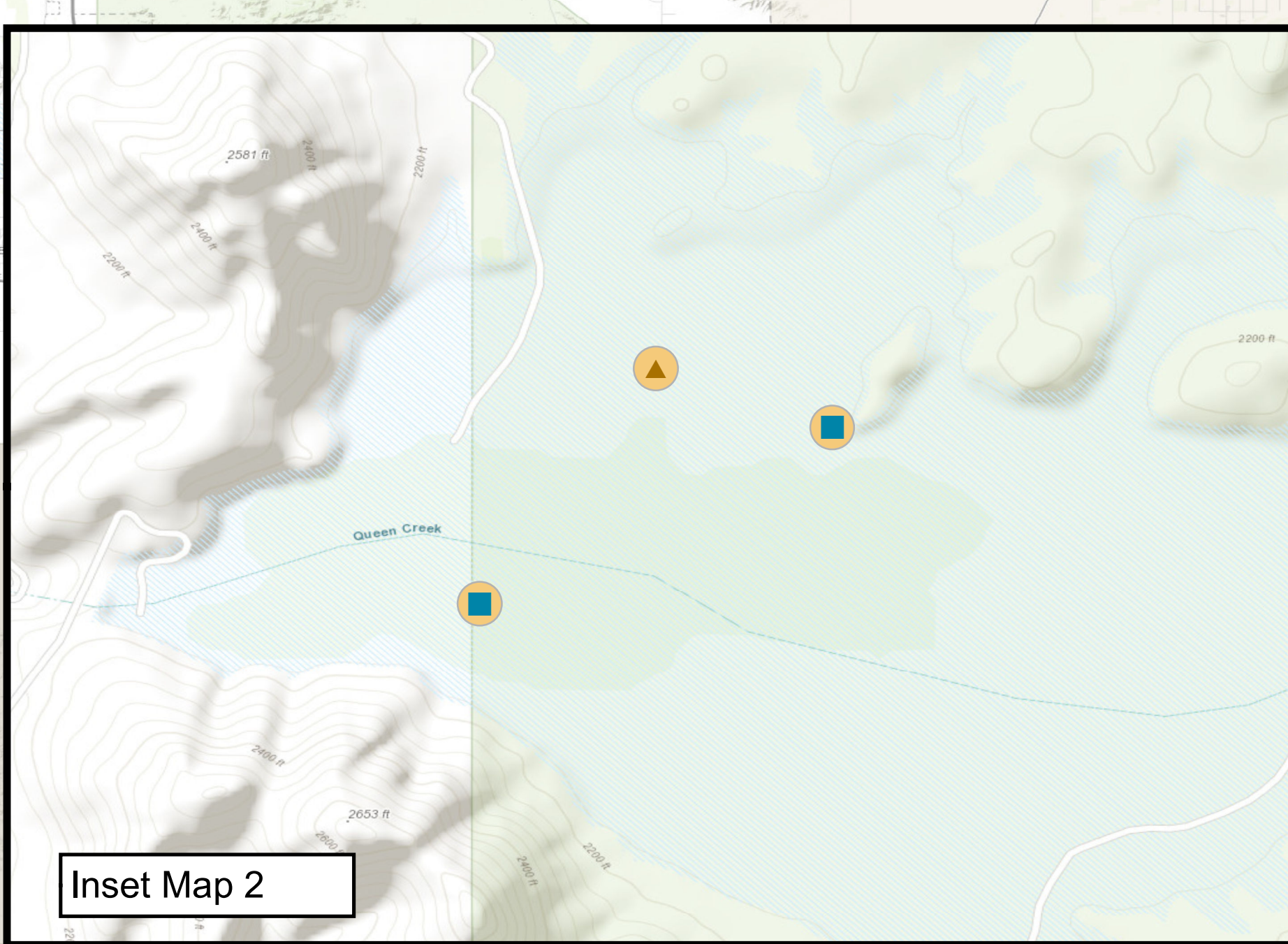
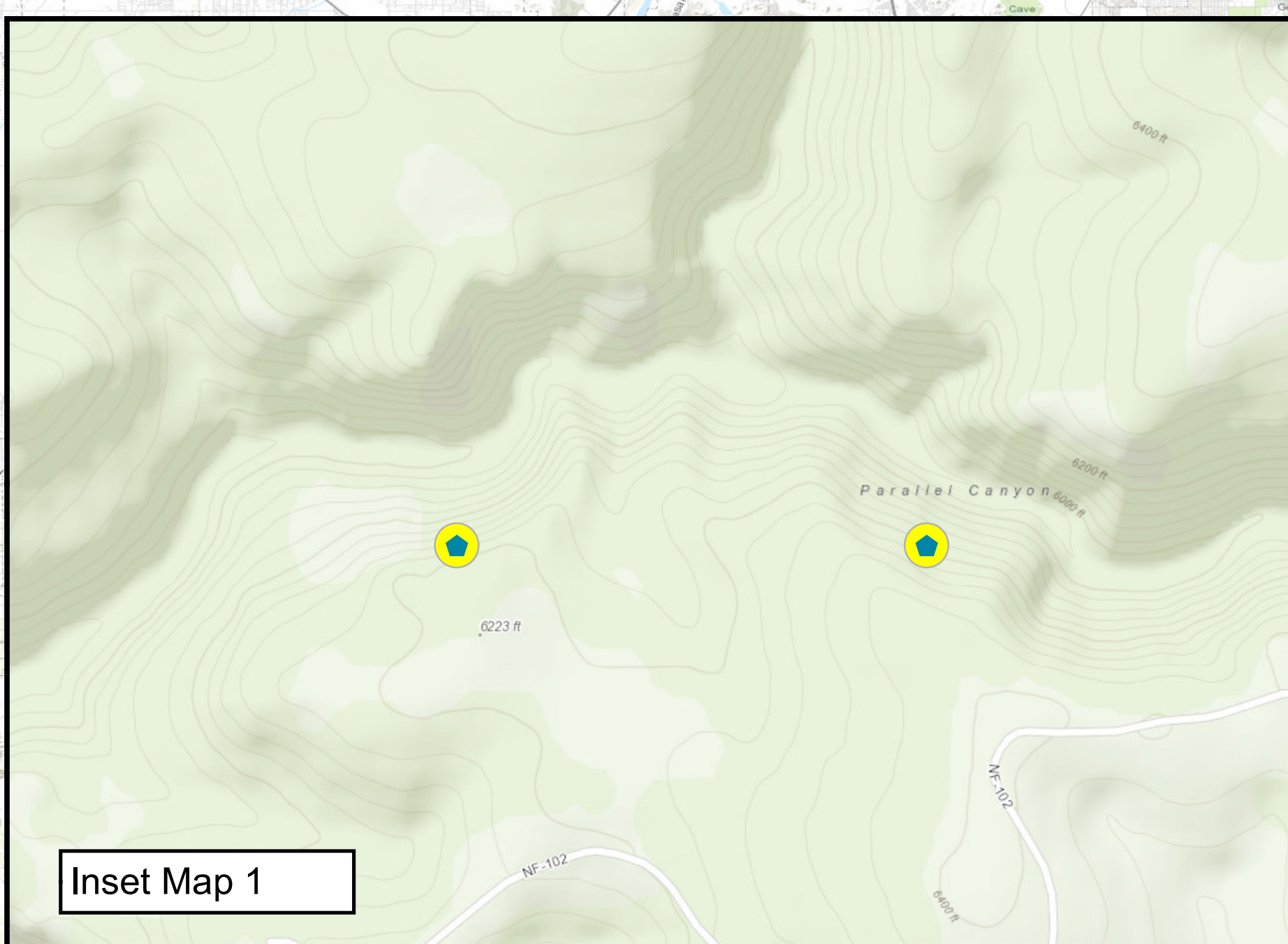
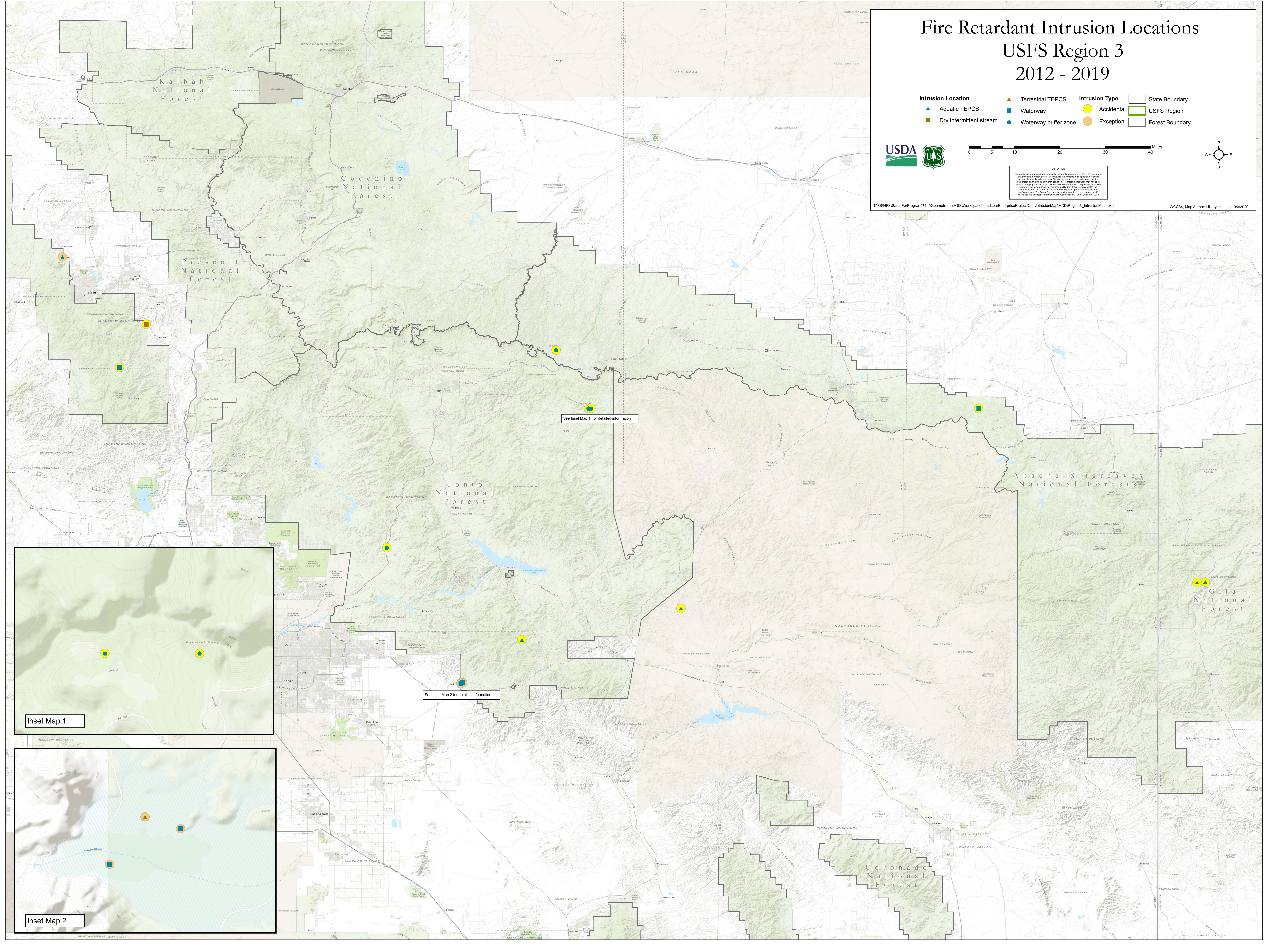
- | | | |
|---------------------------|-----------------------|-----------------------|
| Intrusion Location | Intrusion Type | State Boundary |
| ▲ Aquatic TEPCS | ● Accidental | ▭ USFS Region |
| ■ Dry intermittent stream | ● Exception | ▭ Forest Boundary |
| ▲ Terrestrial TEPCS | ■ Waterway | |
| ■ Waterway buffer zone | | |



ATTENTION
 This product is reproduced from geospatial information prepared by the U.S. Department of Agriculture's Forest Service. It is intended for informational purposes only and does not constitute a warranty or guarantee of accuracy. The Forest Service does not warrant or represent that the information is correct, complete, or up-to-date. The Forest Service does not assume any liability for any errors or omissions in this product. The Forest Service reserves the right to revise, update, or replace this product without notification. Date: October 3, 2020

T:\FS\NFPS\SantaFe\Program7140\Geometrics\GIS\Workspace\hudson\EnterpriseProjectData\IntrusionMap\MXD\Region3_IntrusionMap.mxd

WGS84, Map Author: Hillary Hudson 10/6/2020



See Inset Map 1 for detailed information

See Inset Map 2 for detailed information