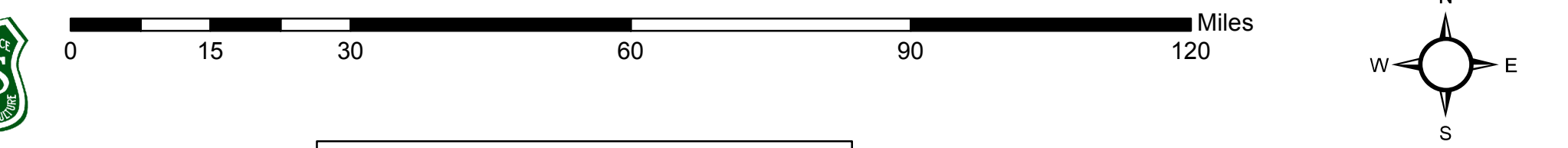


Fire Retardant Intrusion Locations

USFS Region 1

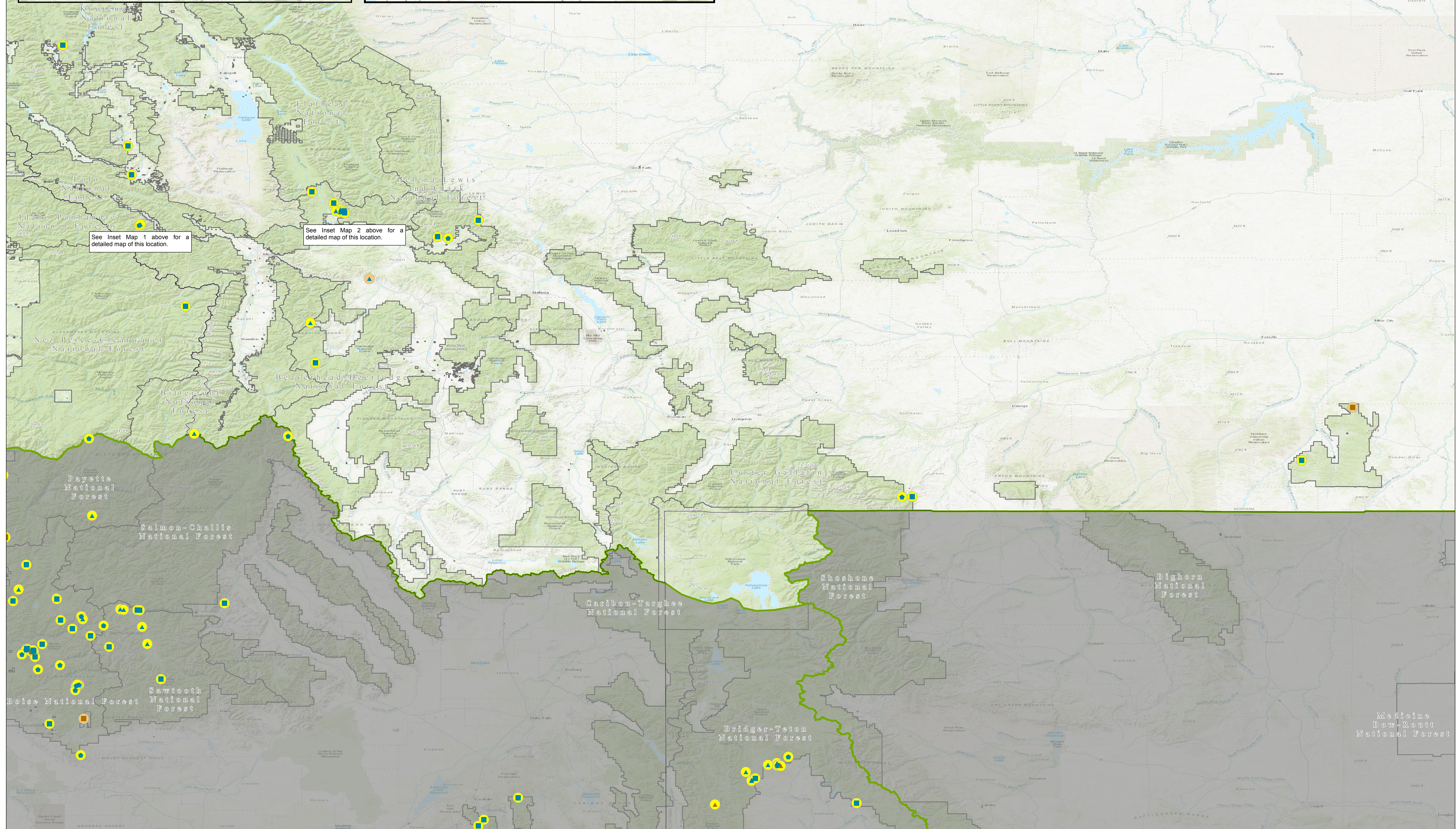
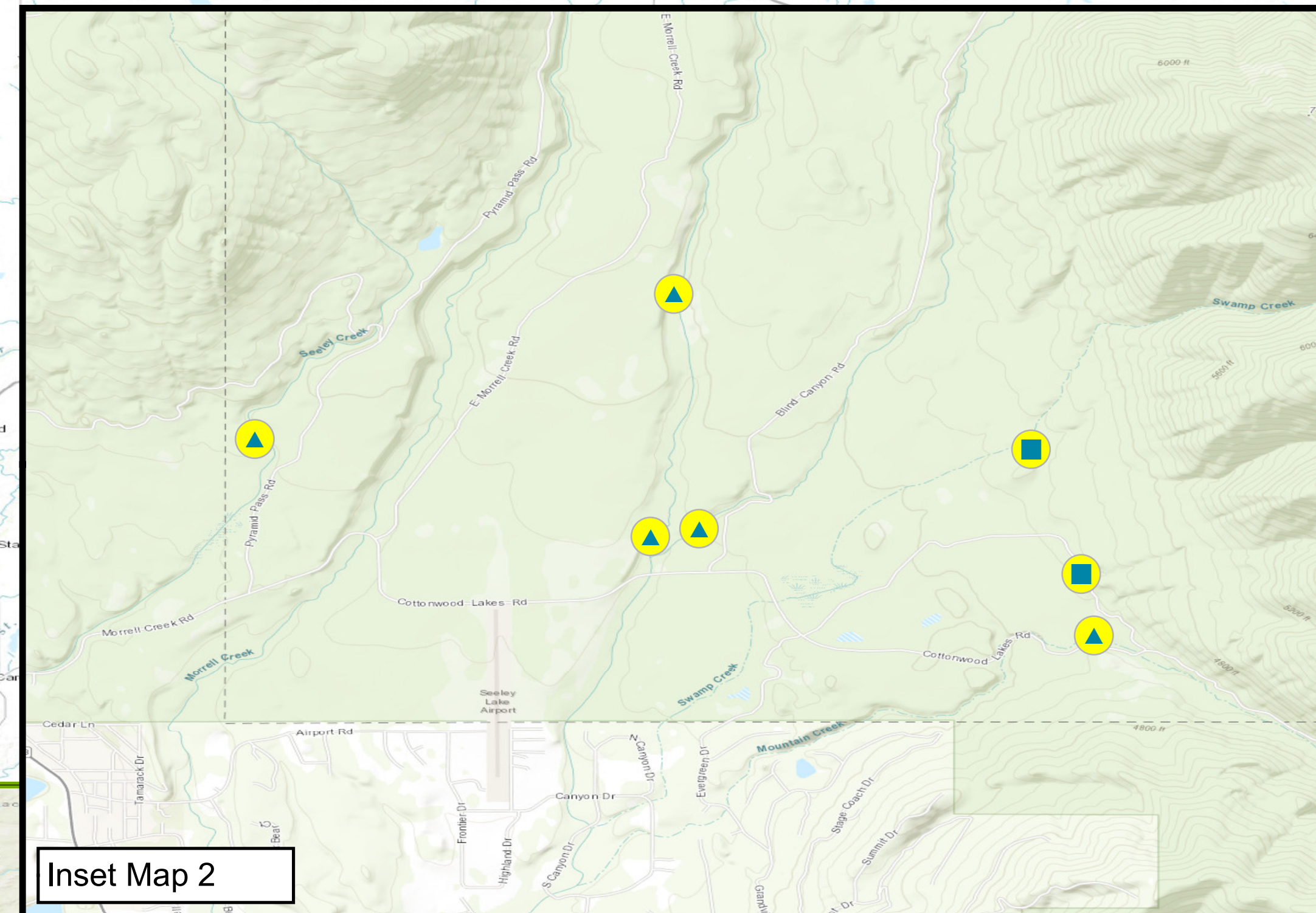
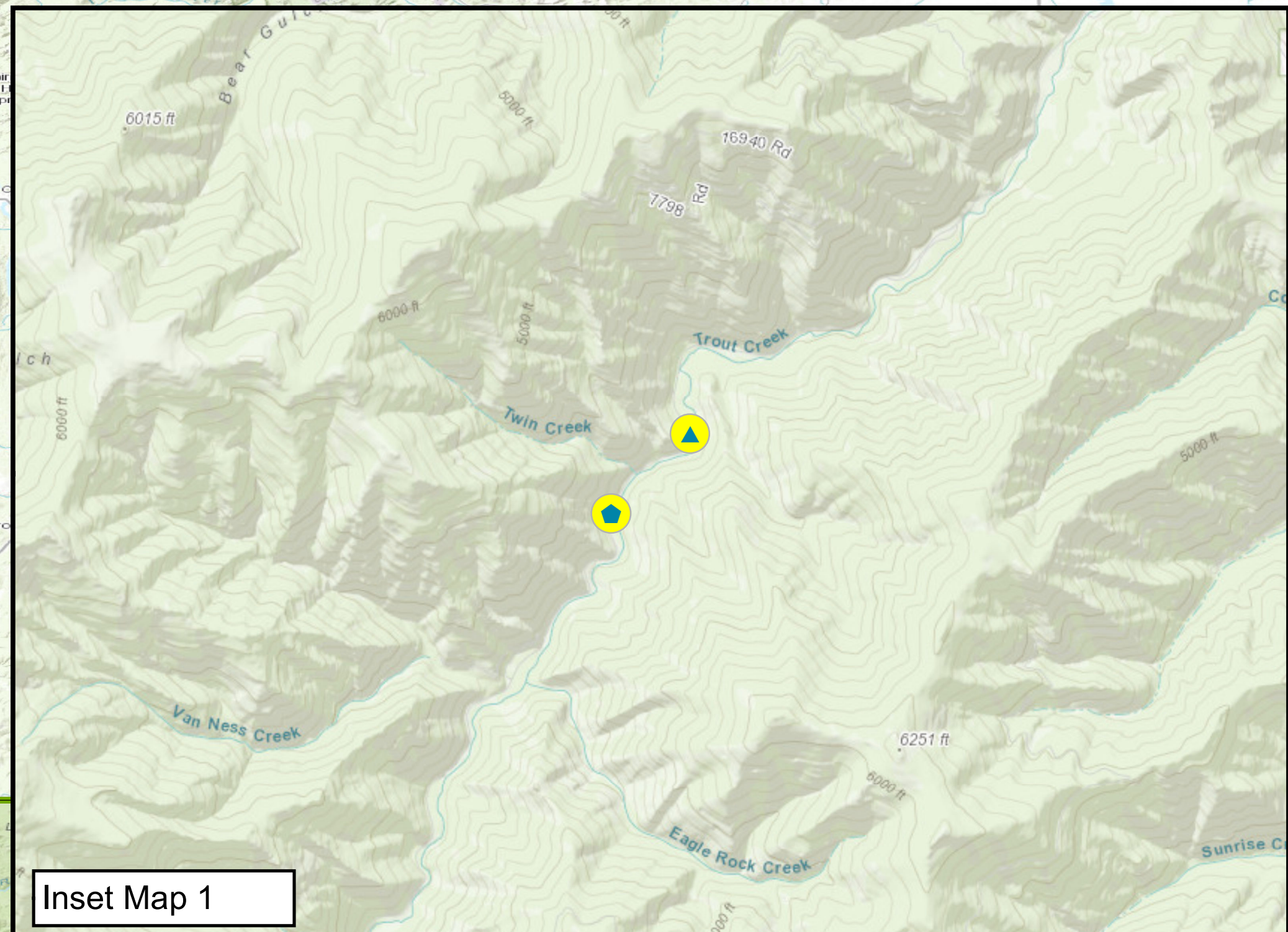
2012 - 2019

- | | | | |
|---------------------------|----------------------|-----------------------|-----------------|
| Intrusion Location | Terrestrial TEPCS | Intrusion Type | State Boundary |
| Aquatic TEPCS | Waterway | Accidental | USFS Region |
| Dry intermittent stream | Waterway buffer zone | Exception | Forest Boundary |



ATTENTION
This product is reproduced here for informational purposes only. It is not intended to be used as a legal document. The Forest Service reserves the right to modify or update this information without notice. The USFS is not responsible for any errors or omissions in this information.

T:\FS\NFS\SantaFe\Program7140\Geometrical\GIS\Workspace\hudson\EnterpriseProjectData\IntrusionMap\MXD\Region1_IntrusionMap.mxd WGS84, Map Author: Hillary Hudson 9/4/2020



See Inset Map 1 above for a detailed map of this location.

See Inset Map 2 above for a detailed map of this location.