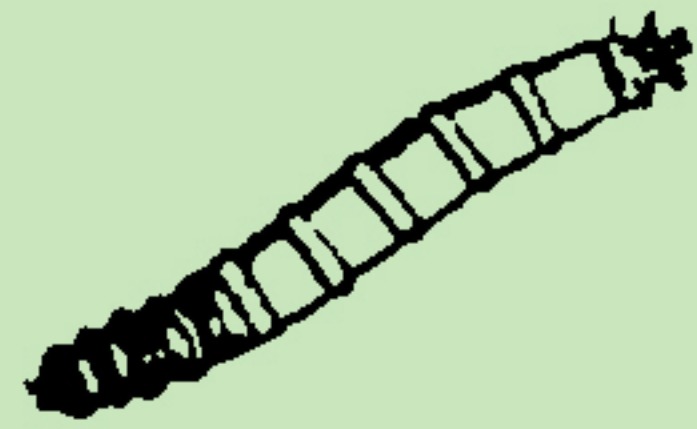


Aquatic insects that are generally



to water pollution.

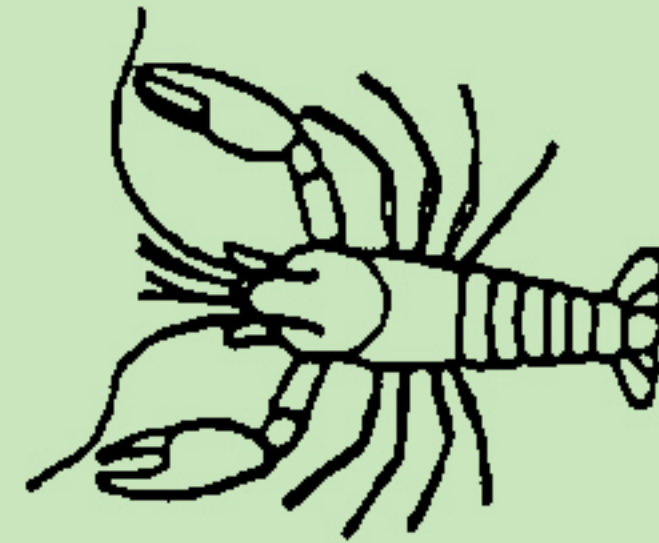
Crane fly Nymphs



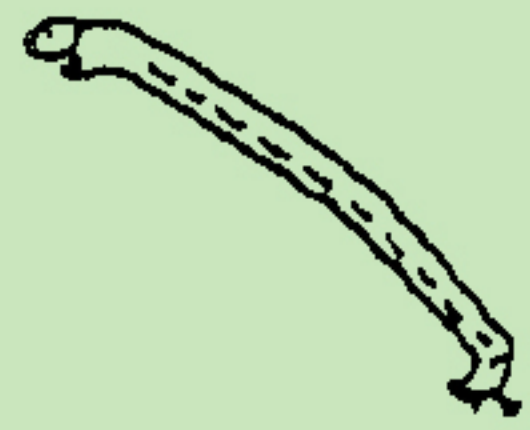
Damselfly Nymphs



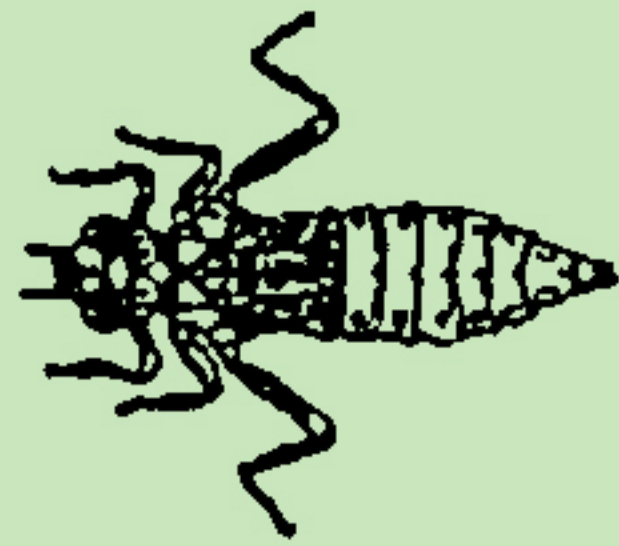
Crayfish



Midge



Dragonfly Nymph



Sideswimmer



Leech



Snail



Aquatic Worms



Mosquito Larva



Bivalves

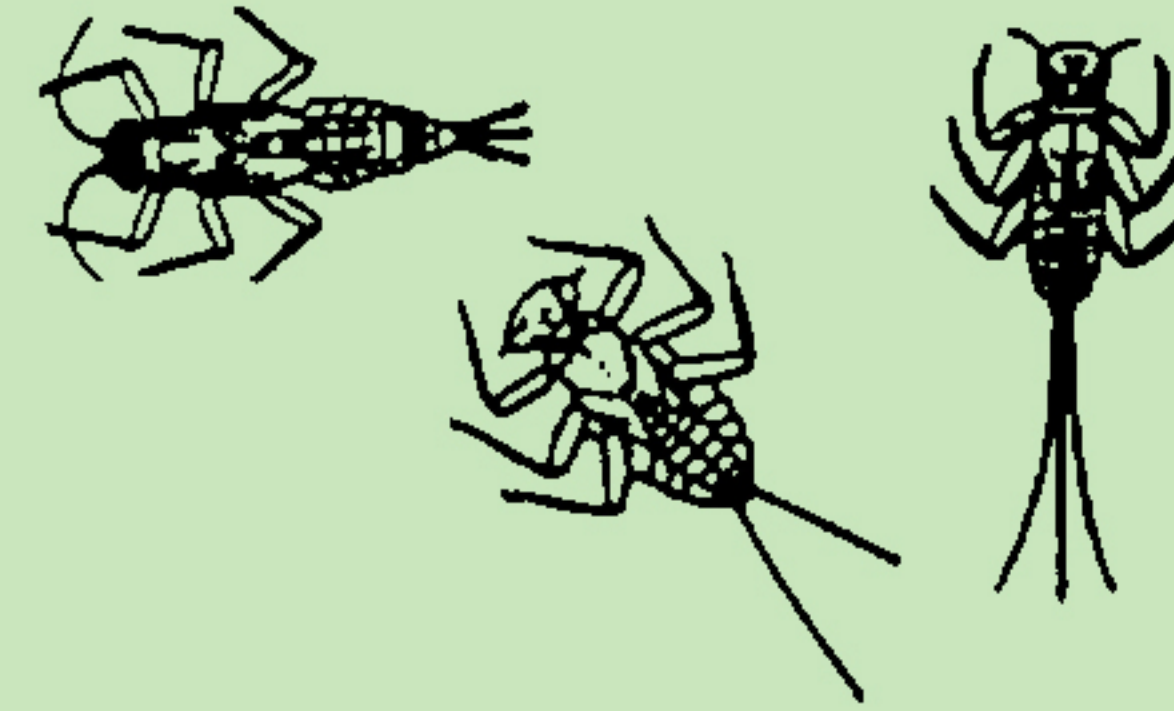


Aquatic insects that are generally

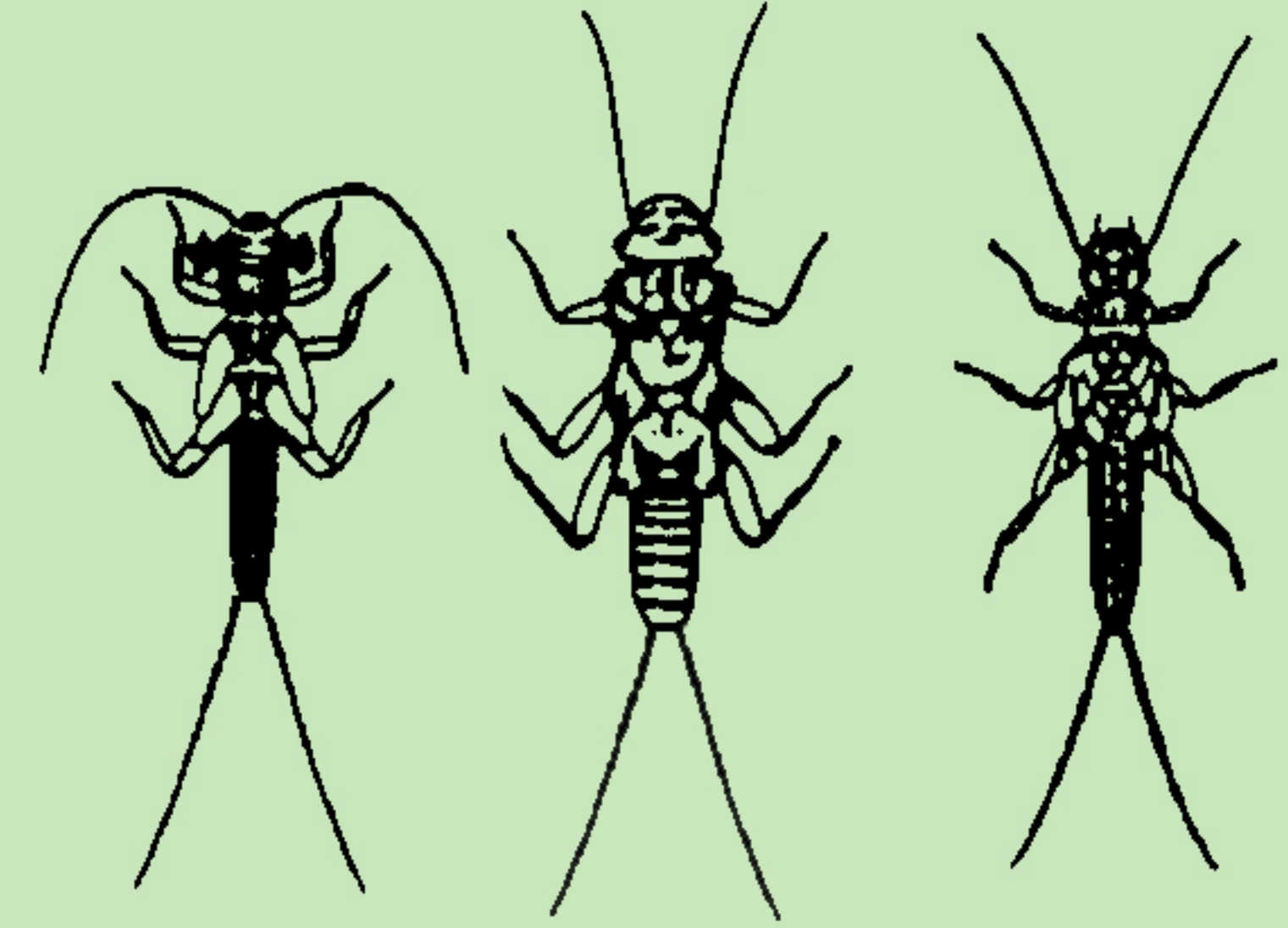


to water pollution.

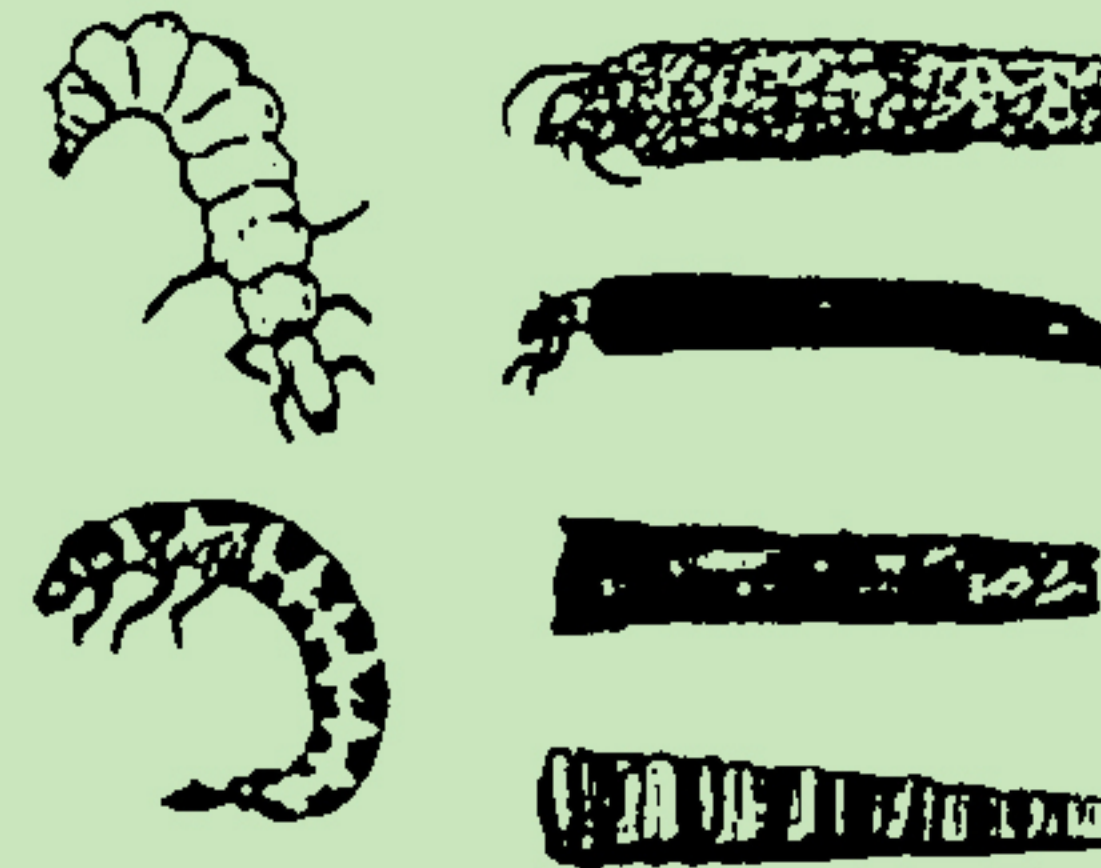
Mayfly Nymphs



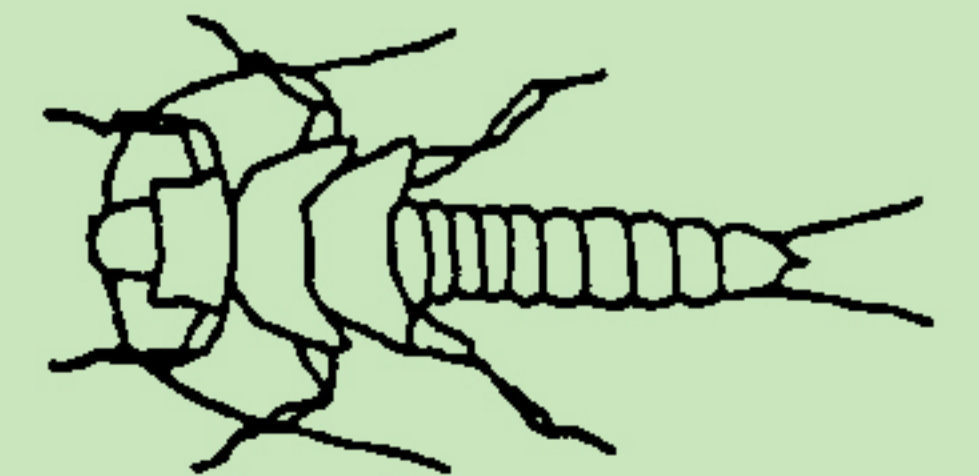
Stonefly Nymph



Caddisfly Larvae



Salmonfly Nymph



Riffle Beetle



Penny Beetle Larva



Dobsonfly Larva



WE CAN TELL HOW HEALTHY A STREAM HAS BEEN OVER TIME BY STUDYING THE DIVERSITY OF ORGANISMS THAT LIVE IN IT.