

A Thermal Map for all Idaho Streams

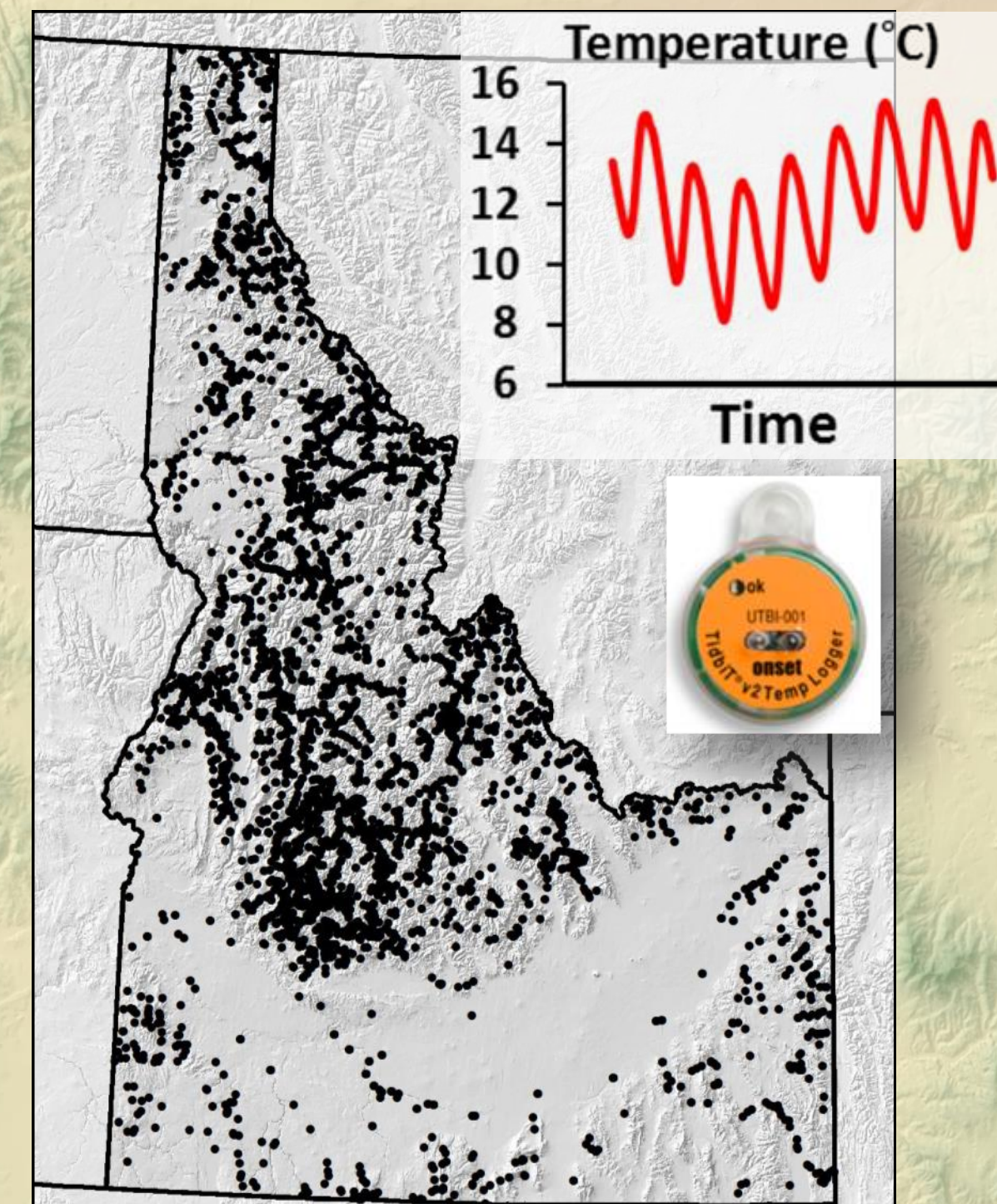
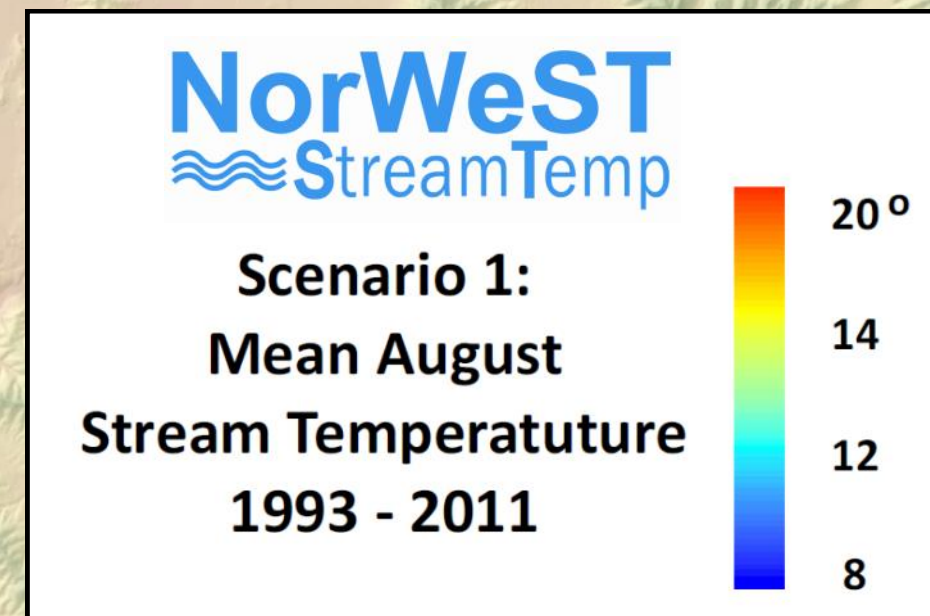


Data providers:

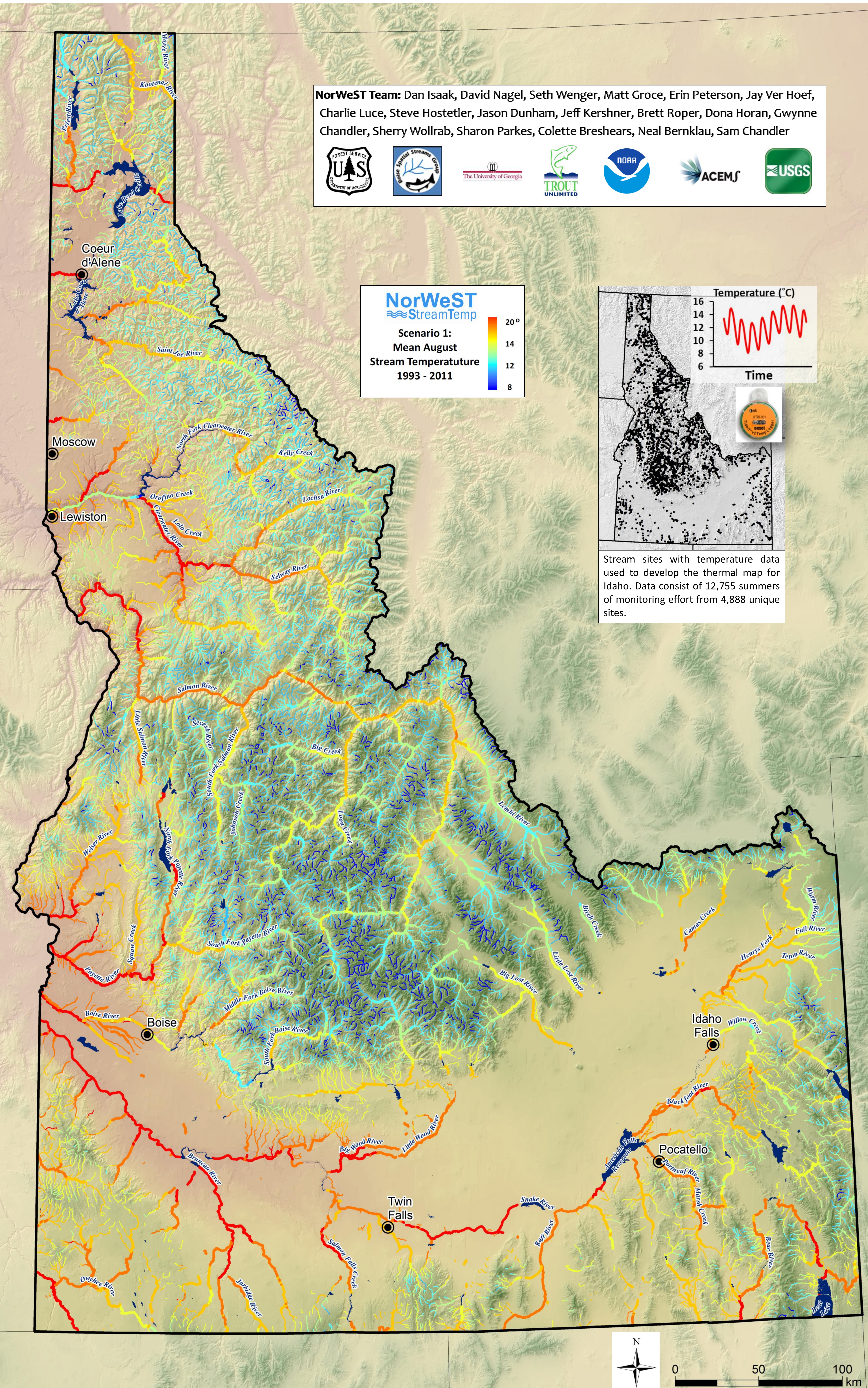
Funded by:



NorWeST Team: Dan Isaak, David Nagel, Seth Wenger, Matt Groce, Erin Peterson, Jay Ver Hoef, Charlie Luce, Steve Hostetler, Jason Dunham, Jeff Kershner, Brett Roper, Dona Horan, Gwynne Chandler, Sherry Wollrab, Sharon Parkes, Colette Breshears, Neal Bernklau, Sam Chandler



Stream sites with temperature data used to develop the thermal map for Idaho. Data consist of 12,755 summers of monitoring effort from 4,888 unique sites.



The aquatics community within Idaho has amassed significant amounts of stream temperature data through their collective monitoring efforts in previous decades. As part of a West-wide effort, the NorWeST project has developed a comprehensive inter-agency stream temperature database for Idaho that consists of data from 4,888 unique sites and 12,755 summers of monitoring effort (map inset). Those data were used with spatial-statistical network models (details at the SSN/STARS website:

www.fs.fed.us/rm/boise/AWAE/projects/SpatialStreamNetworks.shtml) to develop an accurate stream temperature model ($R^2 = 90\%$; $RMSE = 1.0^\circ C$), which was then used to predict 30 high-resolution (1 kilometer) historical and future climate scenarios for streams and rivers in Idaho. This poster depicts a historical scenario of the mean August temperature from 1993-2011 for 55,000 kilometers of stream mapped to the 1:100,000-scale NHDPlus hydrography layer trimmed to exclude intermittent reaches and those >15% slope. NorWeST stream temperature scenarios and state temperature maps are available in user-friendly digital formats (e.g., ArcGIS shapefiles and .pdf files) from the project website (www.fs.fed.us/rm/boise/AWAE/projects/NorWeST.html) and can also be viewed dynamicaly online using this webtool (www.sciencebase.gov/gisviewer/NorWeST/).

Daily summaries (min/max/mean) of the temperature data used to develop the temperature model are also available through the website if permission was given for their distribution. All data are attributed to the original source agency and contributing biologists or hydrologists in metadata files. By providing open access to stream temperature information in user-friendly formats, the NorWeST project is facilitating coordination of monitoring activities among organizations, better conservation planning, and new research on temperature dynamics and thermal ecology.

The analytical infrastructure used to develop the Idaho stream temperature model consists of a new class of spatial-statistical model for data on stream networks that could also be used with water chemistry attributes (e.g., pH, alkalinity, conductivity, etc.), biological datasets (species occurrence, abundance, genetic attributes), or habitat surveys to provide a wealth of new information about streams. More details regarding those applications are provided in the references below and at the National Stream Internet Project website (www.fs.fed.us/rm/boise/AWAE/projects/NationalStreamInternet.html).

KEY REFERENCES

NorWeST Website: www.fs.fed.us/rm/boise/AWAE/projects/NorWeST.html

Spatial Statistical Network Models
Isaak, D., C. Luce, B. Rieman, D. Nagel, E. Peterson, D. Horan, S. Parkes, G. Chandler. 2010. Effects of climate change and wildfire on stream temperatures and salmonid thermal habitat in a mountain river network. *Ecological Applications* 20: 1350-1371.

Isaak, D., E. Peterson, J. Ver Hoef, S. Wenger, J. Falke, C. Torgersen, C. Sowder, A. Steel, M. Fortin, C. Jordan, A. Reusch, N. Som, P. Monestiez. 2014. Applications of spatial statistical network models to stream data. *Wiley Interdisciplinary Reviews - Water* 1:277-294.

Peterson, E., J. Ver Hoef, D. Isaak, J. Falke, M. Fortin, C. Jordan, K. McNyset, P. Monestiez, A. Ruesch, A. Sengupta, N. Som, E. Steel, D. Theobald, C. Torgersen, and S. Wenger. 2013. Modeling dendritic ecological networks in space: an integrated network perspective. *Ecology Letters* 16:707-719.

Ver Hoef, J., E. Peterson, and D. Theobald. 2006. Spatial statistical models that use flow and stream distance. *Environmental and Ecological Statistics* 13:449-464.

Ver Hoef, J., E. Peterson, D. Clifford, and R. Shah. 2014. SSN: An R package for spatial statistical modeling on stream networks. *Journal of Statistical Software* 56(3):1

