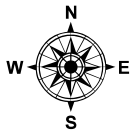
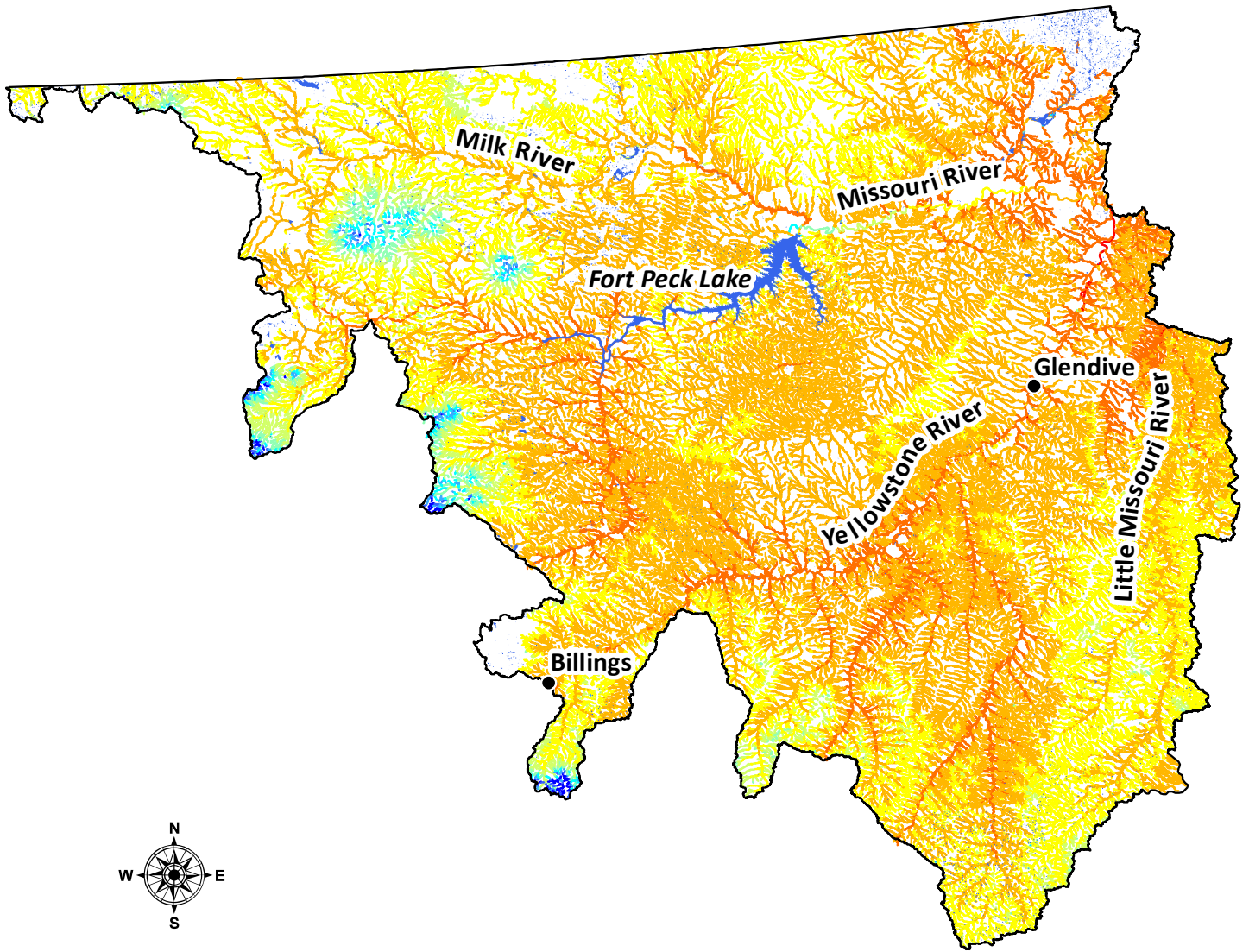


# NorWeST Stream Temperature

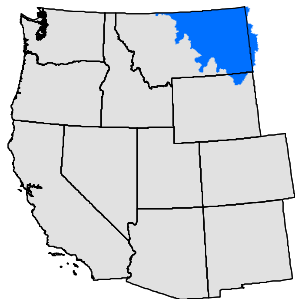
Modeled Mean August Stream Temperature  
1993 - 2011

## Eastern Montana

Modeling extent covers HUC 8 basins in portions of eastern Montana. Includes all NHDPlus perennial and intermittent flowlines.



100 km



Scenario 1:  
Mean August  
Stream Temperature  
1993 - 2011



NorWeST  
Stream Temp



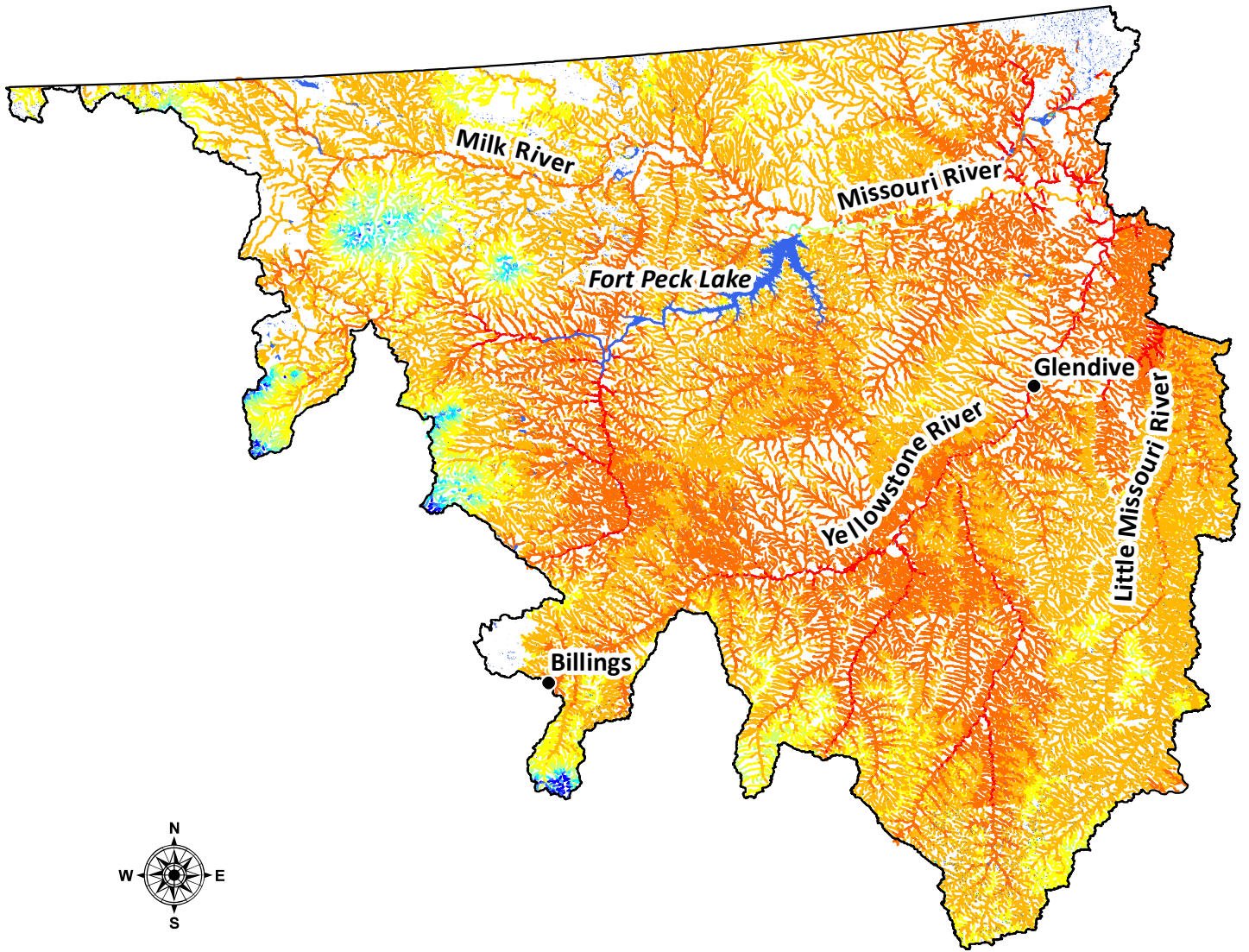
<https://www.fs.fed.us/rm/boise/AWAE/projects/NorWeST.html>

# NorWeST Stream Temperature

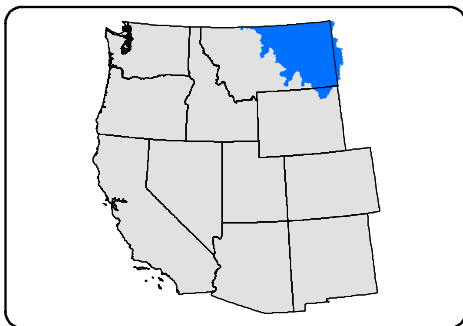
Modeled Mean August Stream Temperature  
2040s A1B Prediction

## Eastern Montana

Modeling extent covers HUC 8 basins in portions of eastern Montana. Includes all NHDPlus perennial and intermittent flowlines.



100 km



Scenario 30:  
Mean August  
Stream Temperature  
2040s A1B Prediction



NorWeST  
Stream Temp



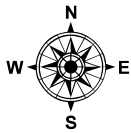
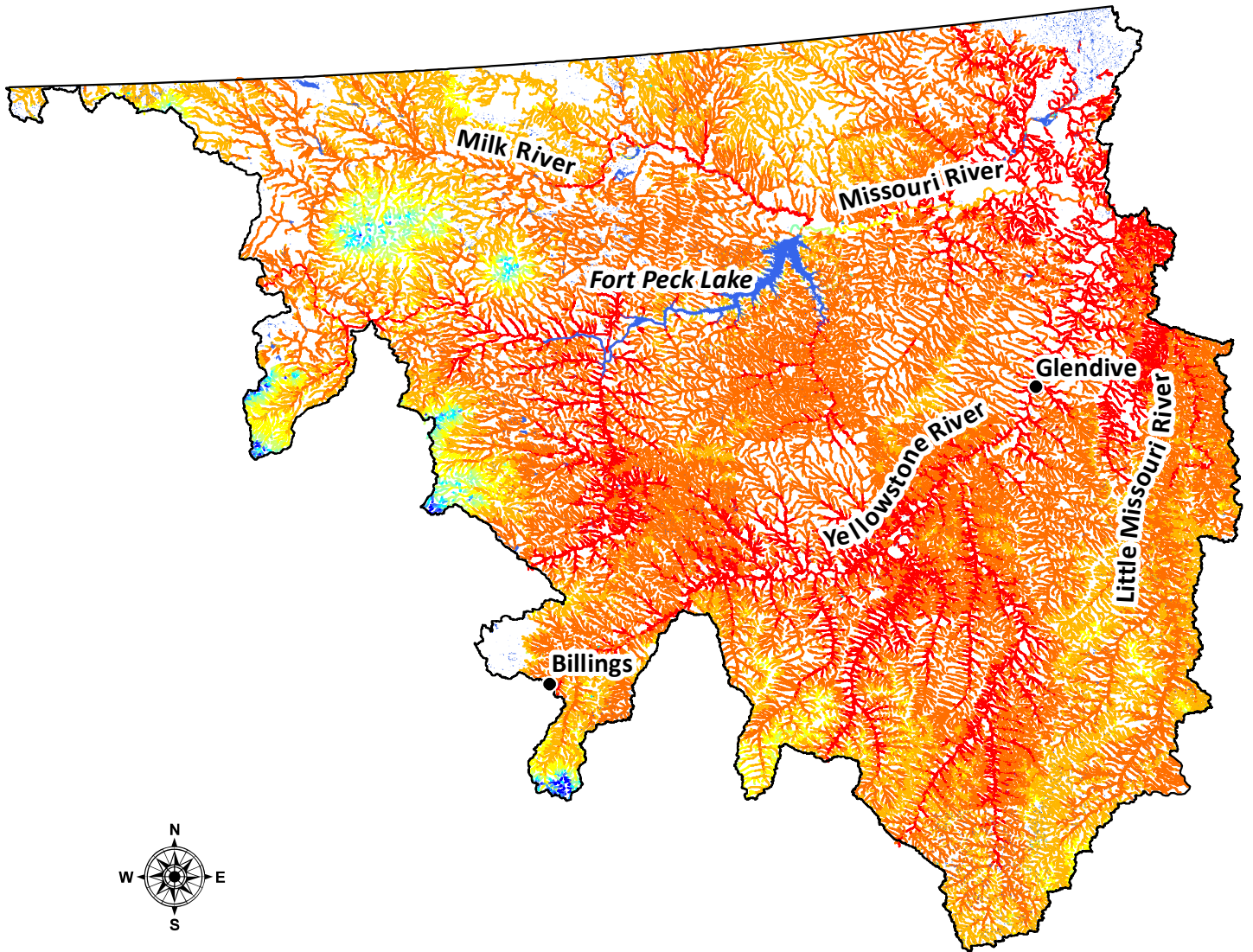
<https://www.fs.fed.us/rm/boise/AWAE/projects/NorWeST.html>

# NorWeST Stream Temperature

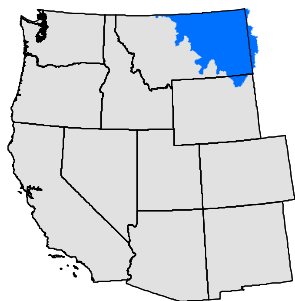
Modeled Mean August Stream Temperature  
2080s A1B Prediction

## Eastern Montana

Modeling extent covers HUC 8 basins in portions of eastern Montana. Includes all NHDPlus perennial and intermittent flowlines.



100 km



Scenario 32:  
Mean August  
Stream Temperature  
2080s A1B Prediction



NorWeST  
Stream Temp



<https://www.fs.fed.us/rm/boise/AWAE/projects/NorWeST.html>