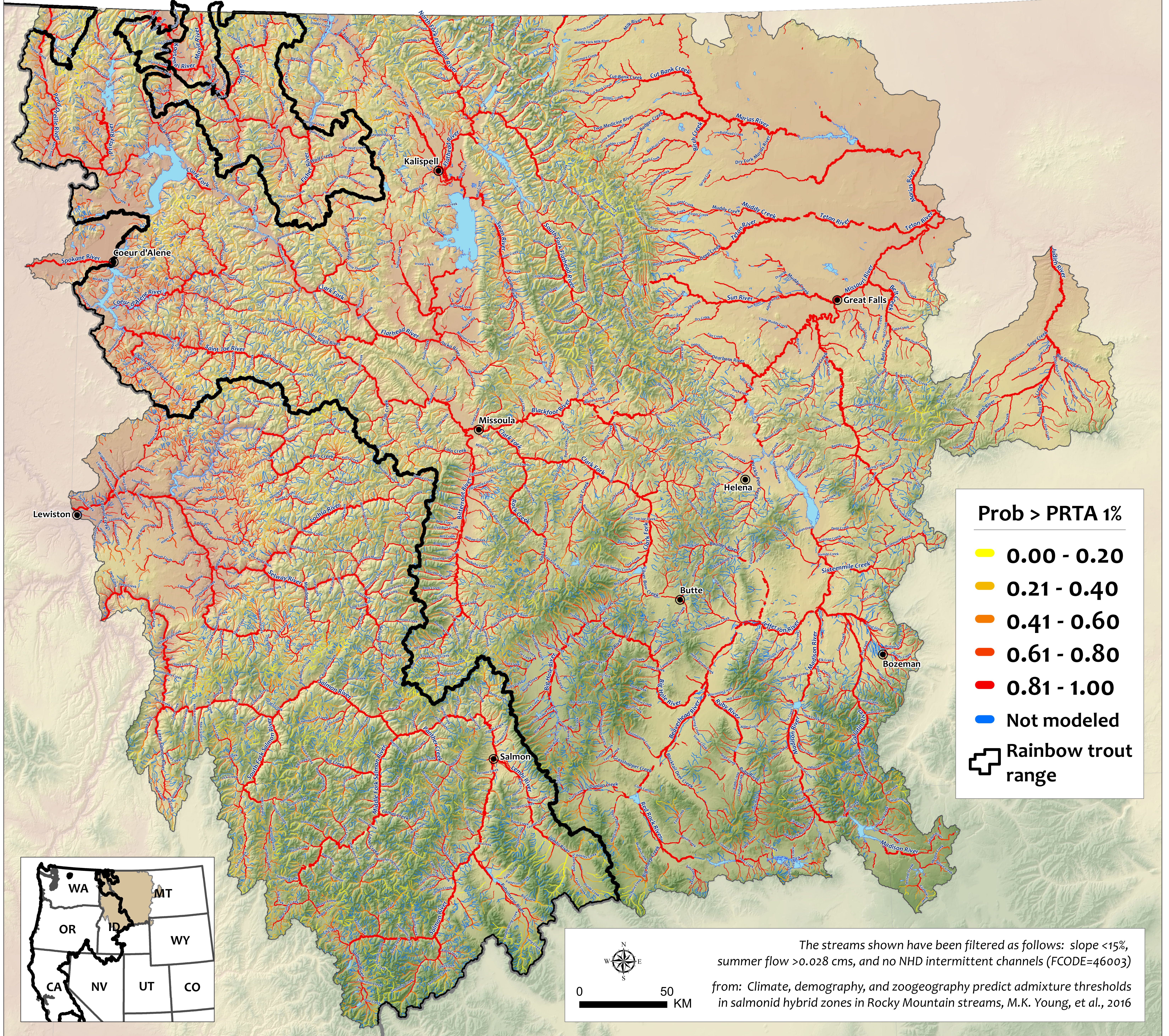


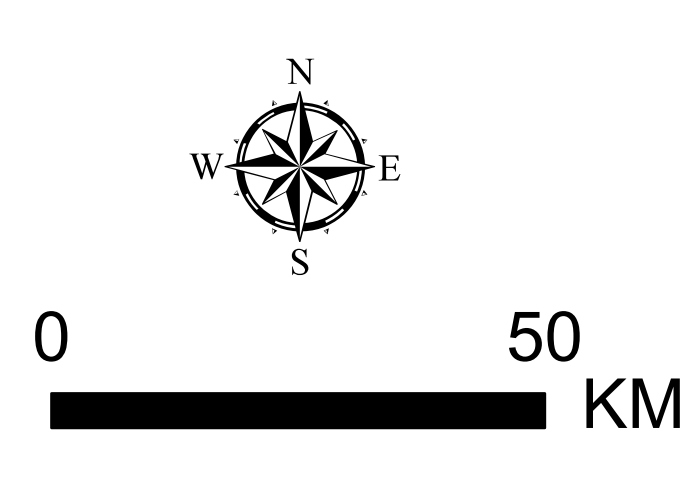
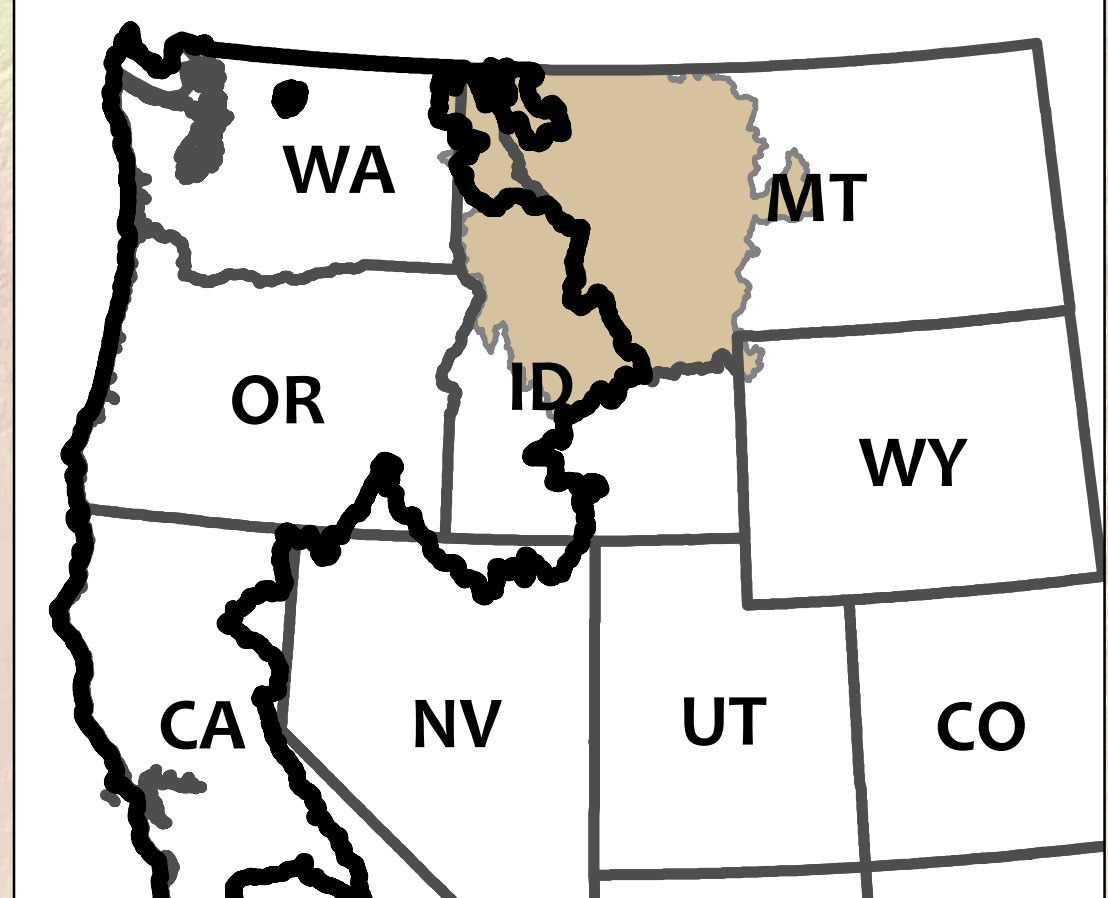
# Supplemental Map: Scenario 4 - equilibrium + 0.5°C

Probability that cutthroat trout hybridization exceeds 1% rainbow trout alleles (PRTA 1%)



### Prob > PRTA 1%

- 0.00 - 0.20
- 0.21 - 0.40
- 0.41 - 0.60
- 0.61 - 0.80
- 0.81 - 1.00
- Not modeled
- Rainbow trout range



The streams shown have been filtered as follows: slope <15%, summer flow >0.028 cms, and no NHD intermittent channels (FCODE=46003)  
from: Climate, demography, and zoogeography predict admixture thresholds in salmonid hybrid zones in Rocky Mountain streams, M.K. Young, et al., 2016