



# Treasure Interface Stewardship Project

Libby Ranger District  
Kootenai National Forest  
2002-2003

05/30/2003



# Project Objectives



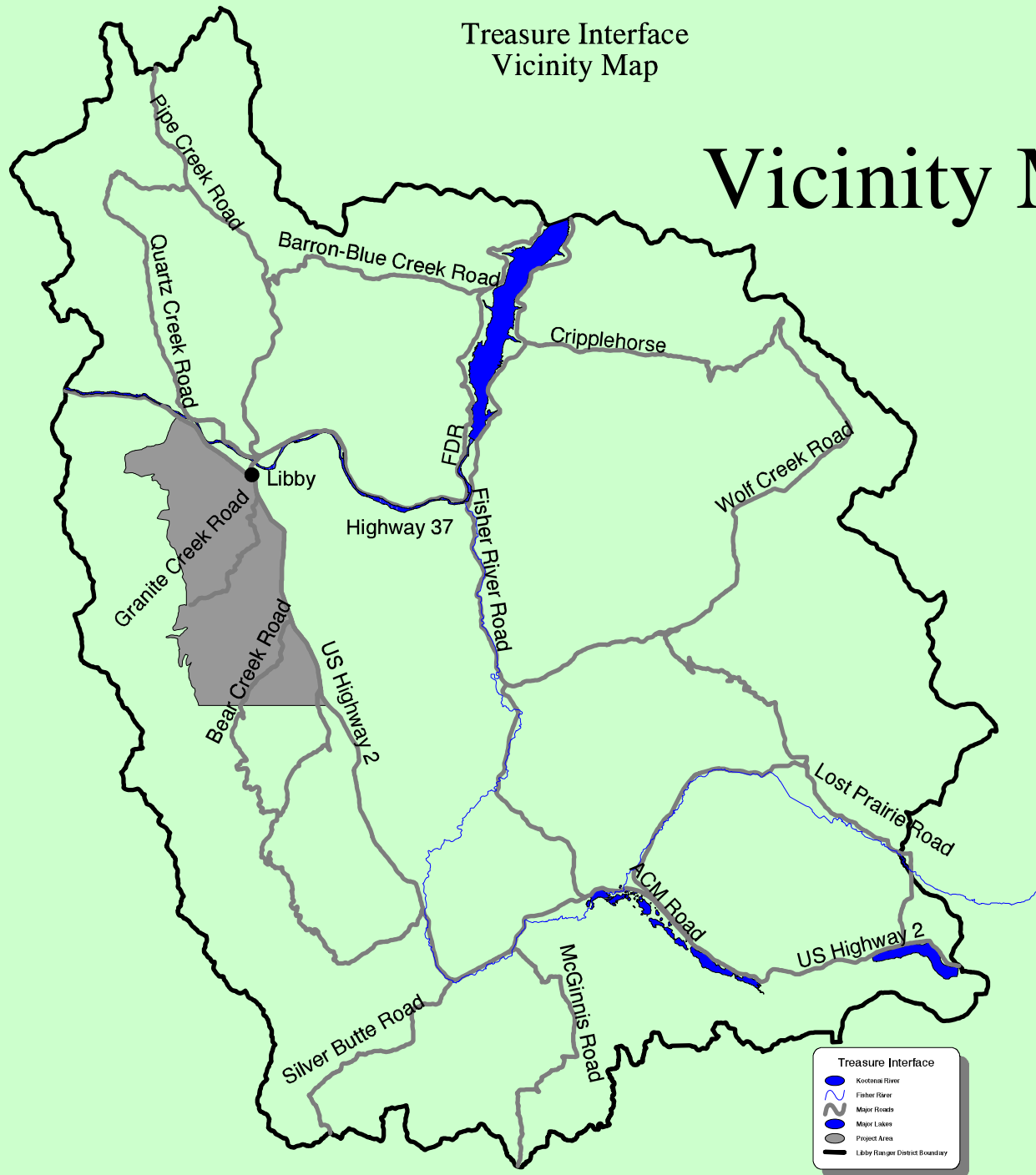
765 acres interface fuel  
reduction

Use Rx Fire – natural  
ecological process

Create Habitat Diversity

Treasure Interface  
Vicinity Map

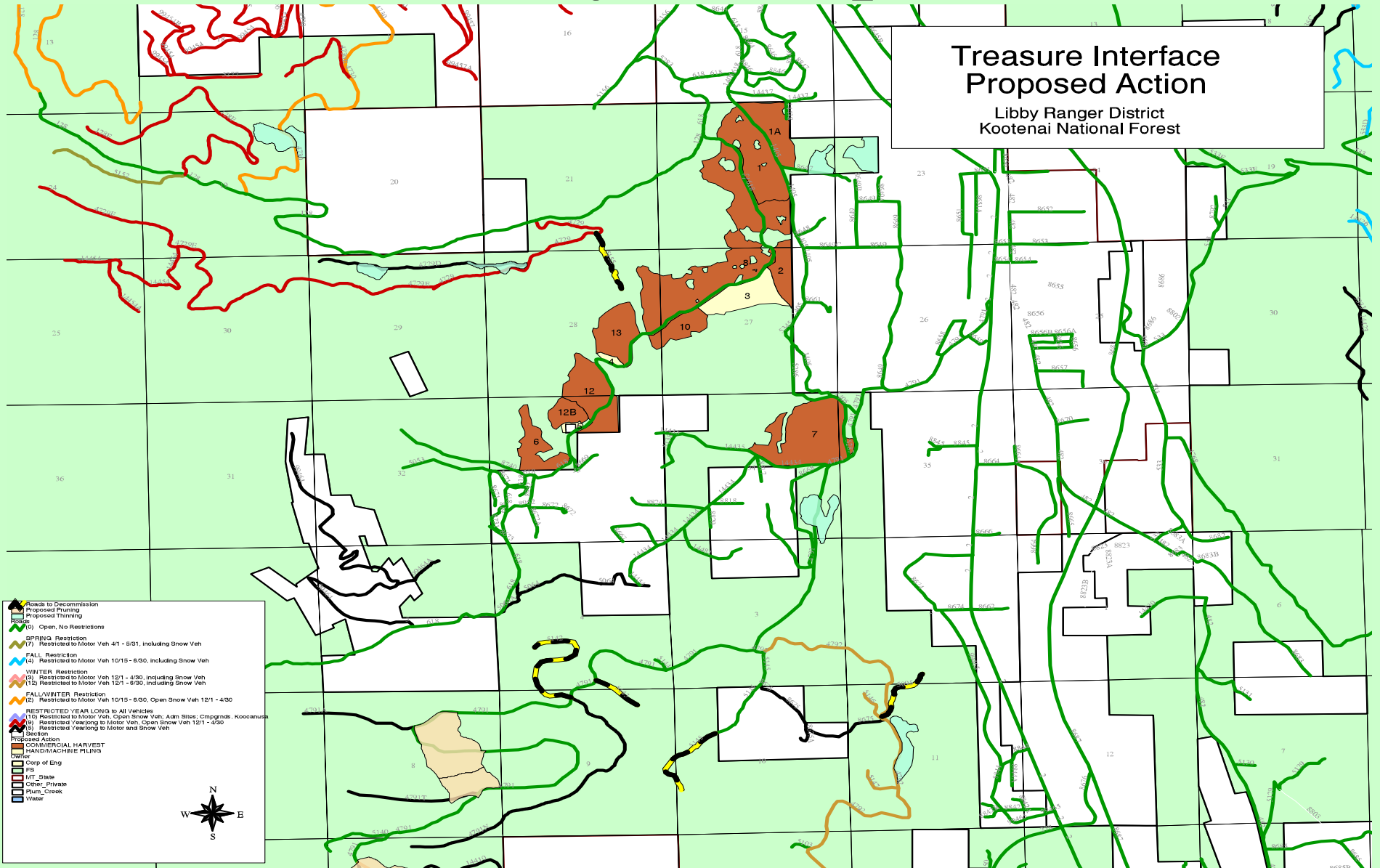
# Vicinity Map



# Project Map

## Treasure Interface Proposed Action

Libby Ranger District  
Kootenai National Forest



- Roads to Decommission
- Proposed Pruning
- Proposed Thinning
- Road
- (0) Open, No Restrictions
- SPRING Restriction
- (7) Restricted to Motor Veh 4/1 - 5/31, including Snow Veh
- FALL Restriction
- (4) Restricted to Motor Veh 10/15 - 6/30, including Snow Veh
- WINTER Restriction
- (2) Restricted to Motor Veh 12/1 - 4/30, including Snow Veh
- (12) Restricted to Motor Veh 12/1 - 6/30, including Snow Veh
- FALL/WINTER Restriction
- (2) Restricted to Motor Veh 10/15 - 6/30, Open Snow Veh 12/1 - 4/30
- RESTRICTED YEAR LONG to All Vehicles
- (10) Restricted to Motor Veh, Open Snow Veh; Adm Sites, Campgrounds, Kooocanus
- (8) Restricted Yearlong to Motor Veh, Open Snow Veh 12/1 - 4/30
- (5) Restricted Yearlong to Motor and Snow Veh
- Swath
- Proposed Action
- COMMERCIAL HARVEST
- HAND/ MACHINE PILING
- Swath
- Corp of Eng
- FS
- MT\_State
- Other\_Private
- Plum\_Creek
- Water



# Existing Conditions

**Pre-existing stands in excess  
of 120 B.A.**

**Adjacent properties and  
forest at threat of crown  
fire**

05/16/2003



# Project:

- **Goods for Services**
- **Best Value Contract**
- **1.6 mmbf volume**
- **Recreation developments**
- **Thinning Projects**

07/10/2003



# Service Projects



**XC Ski area restroom**



# Rest & Picnic Shelter





# Residual Stands



**Residual stands were thinned to 40-60 basal area**



# Fuels Piling

Fuels were excavator-piled for burning





# Multi-Party Monitoring





# Results

- A cross section of community stakeholders
- “It’s gone very smoothly”
- “Positive thing for Lincoln County
- “Money goes back into the ground”
- All services awarded within Lincoln County
- “Viable tool for community-based forestry”

# Summary and Questions

- **New PL 108-7 extends stewardship to 2013**
- **No longer a “Pilot Project”**
- **Continued public collaboration**
- **Another effective tool in management**
- **Effective tool in the Interface areas**

05/15/2003





# **Thanks for your Interest !!**

**(pictures by Ken Farmer/M.Edwards)**

**project designed and administered by Libby Ranger District**

**with the community working group**

**thanks also to Louisiana Pacific Corp,**

**and all other partners !**