

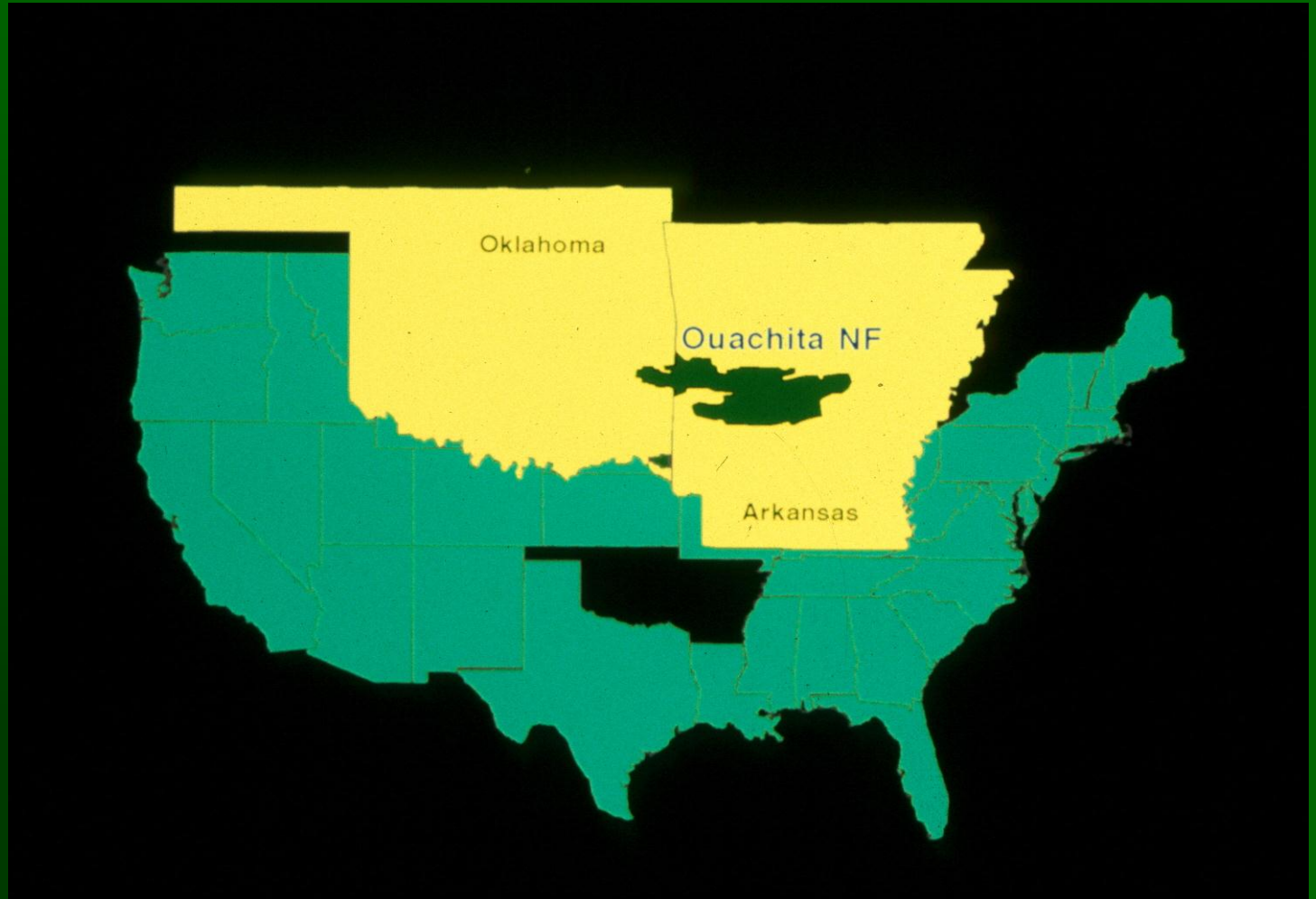


**SHORTLEAF-BLUESTEM COMMUNITY**  
Ouachita National Forest  
Arkansas-Oklahoma



# The Ouachita National Forest

- 1.8 million acres
- west-central Arkansas
- southeast Oklahoma





# OUACHITA NF CFLRP

\$350,000 in 2012

\$2.4 million/year 2013-2019

Project Area is 350,000 acres

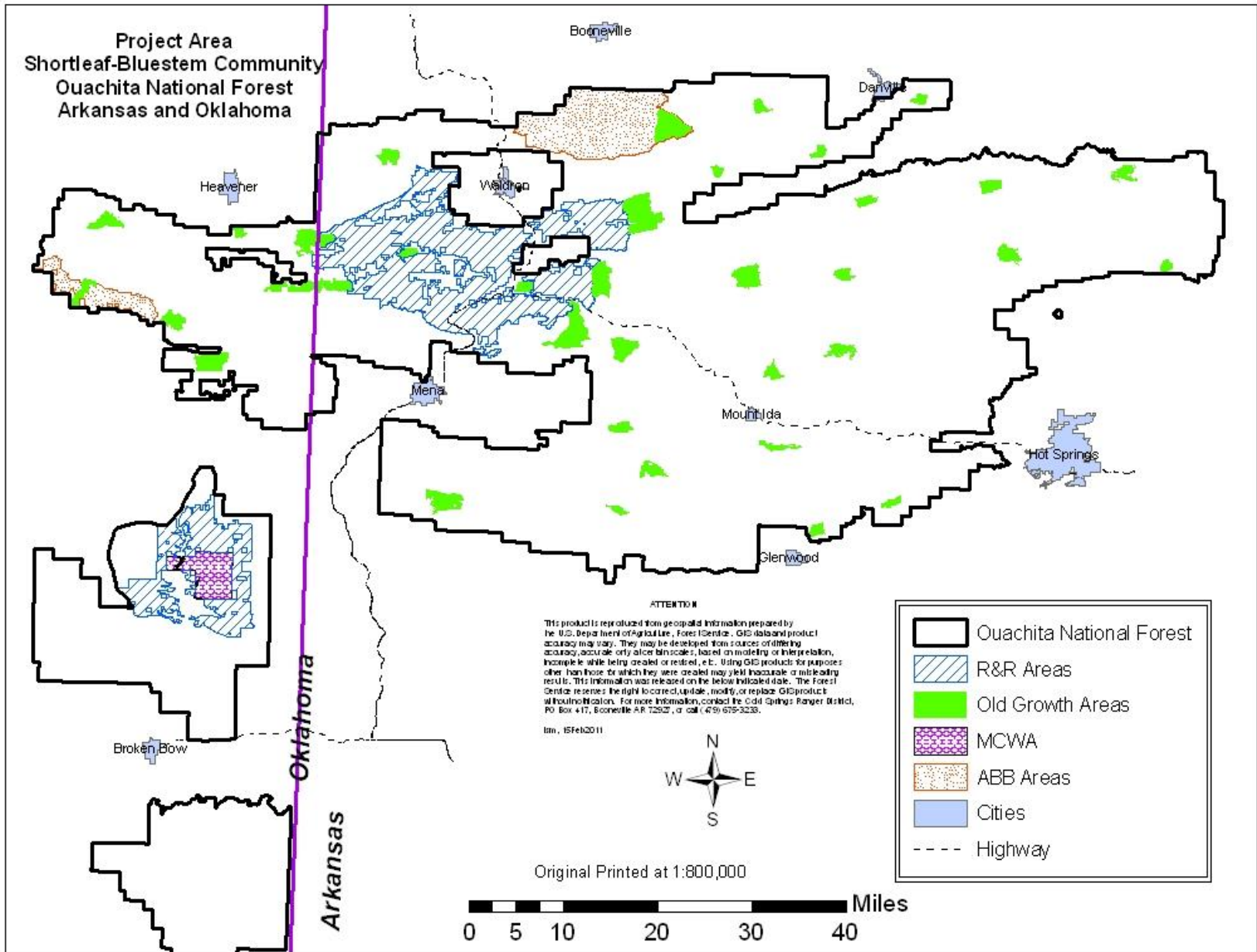
Pine-Bluestem  
and RCW Areas

Old Growth Areas

American Burying Beetle Areas



**Project Area**  
**Shortleaf-Bluestem Community**  
**Ouachita National Forest**  
**Arkansas and Oklahoma**



**ATTENTION**

This product is reproduced from geospatial information prepared by the U.S. Department of Agriculture, Forest Service. GIS data and product accuracy may vary. They may be developed from sources of differing accuracy, accurate only at the scale, based on modeling or interpretation, incomplete while being created or revised, etc. Using GIS products for purposes other than those for which they were created may yield inaccurate or misleading results. This information was released on the below indicated date. The Forest Service reserves the right to correct, update, modify, or replace GIS products without notification. For more information, contact the Cold Springs Ranger District, PO Box 417, Booneville AR 72522, or call (479) 679-3238.

km, 15Feb2011



# OUACHITA NF CFLRP

Target: advanced or intermediate woodland condition on 320,000 of the 350,000 acres.

Advanced restoration: open canopy, forest floor dominated by grasses and forbs and lack of midstory.

Over past 20 years, 183,000 acres has been restored (FRCC 1 or 2)





# The Restoration Prescription

## For Existing Shortleaf Pine Stands

- thin to about 60 ft<sup>2</sup> basal area per acre
- reduce the woody midstory
- apply prescribed burns within 3 to 4 year intervals





# Annual ONF Restoration Program Doubles with CFLRP

- 6,000 acres thinned
- 5,000 acres midstory reduction
- 100,000 acres burned

**At end of CFLRP Funding: 1,000,000 acres will have received treatment (includes re-entry acres)**







**Thinnings:** more timber sales: increasing employment with contracts, internal hires, more timber going to local mills.







**WSI:** more contracted midstory reduction.  
Woody stems for co-generation at coal-fired power plant.



Post-treatment of Midstory Reduction Treatment





**Burning:** contracts, partnerships and internal hires for prescribed burning, including additional helicopters, dozers, and burn bosses.



Dormant-Season Prescribed Burn in a Shortleaf Pine Stand





# Projected Plan



- ❖ **Interdisciplinary crew** of 6 as 1039's for marking/fire/wildlife
- ❖ **Partner crews of 12-18:** Buffalo River National Park Service, Native American Tribes, The Nature Conservancy, Arkansas Forestry Commission, Job Corp, National Wild Turkey Federation.



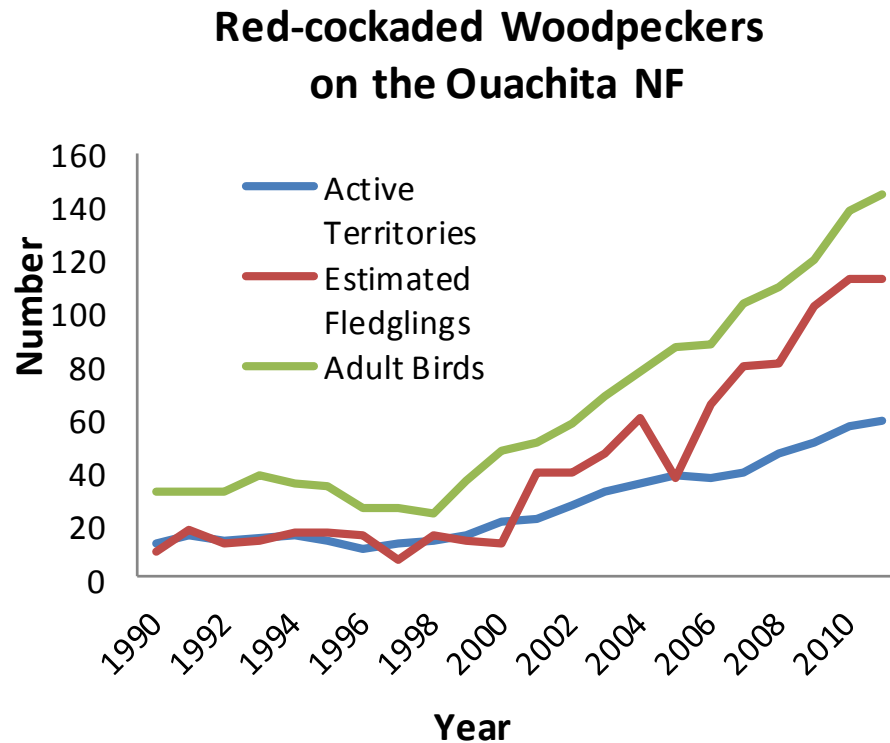
**A Fully-Restored Shortleaf Pine – Bluestem Grass Community**



# Our Restoration is driven by 27 partners from timber purchasers to colleges and universities making it a **SUCCESS!**



# Restoration led to RCW Recovery Benefiting Tourism as only RCW in Arkansas, an IBA (Important Bird Area)







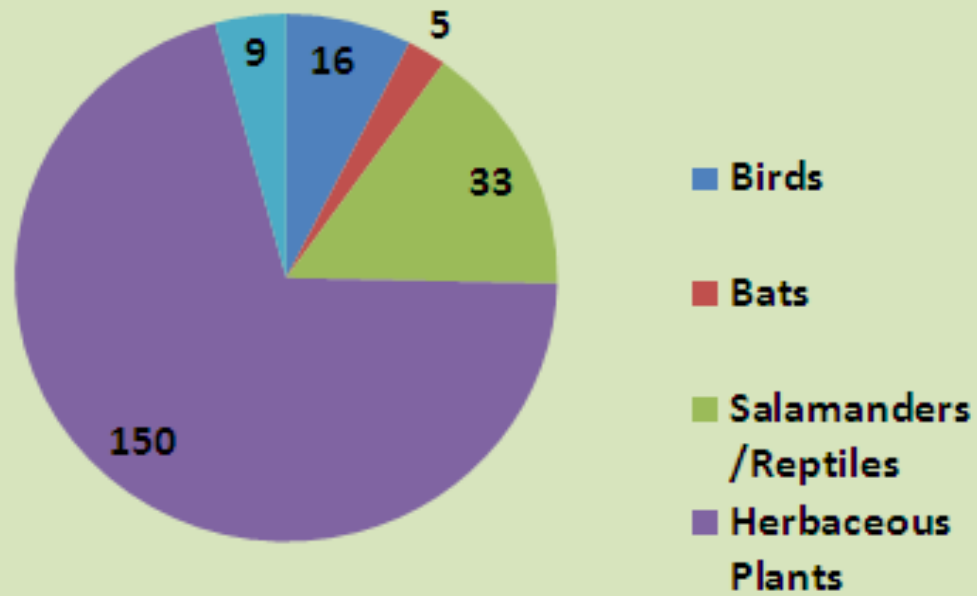
Annually Eco-Tours in Project Area conducted with partners or with auto tours bring 400-600 visitors from colleges to senior citizen groups. More tours will result with more CFLRP partnerships.





# Other Taxa Benefit from Restoration. Over 52 publications in project area from soils/nutrients to bats and butterflies

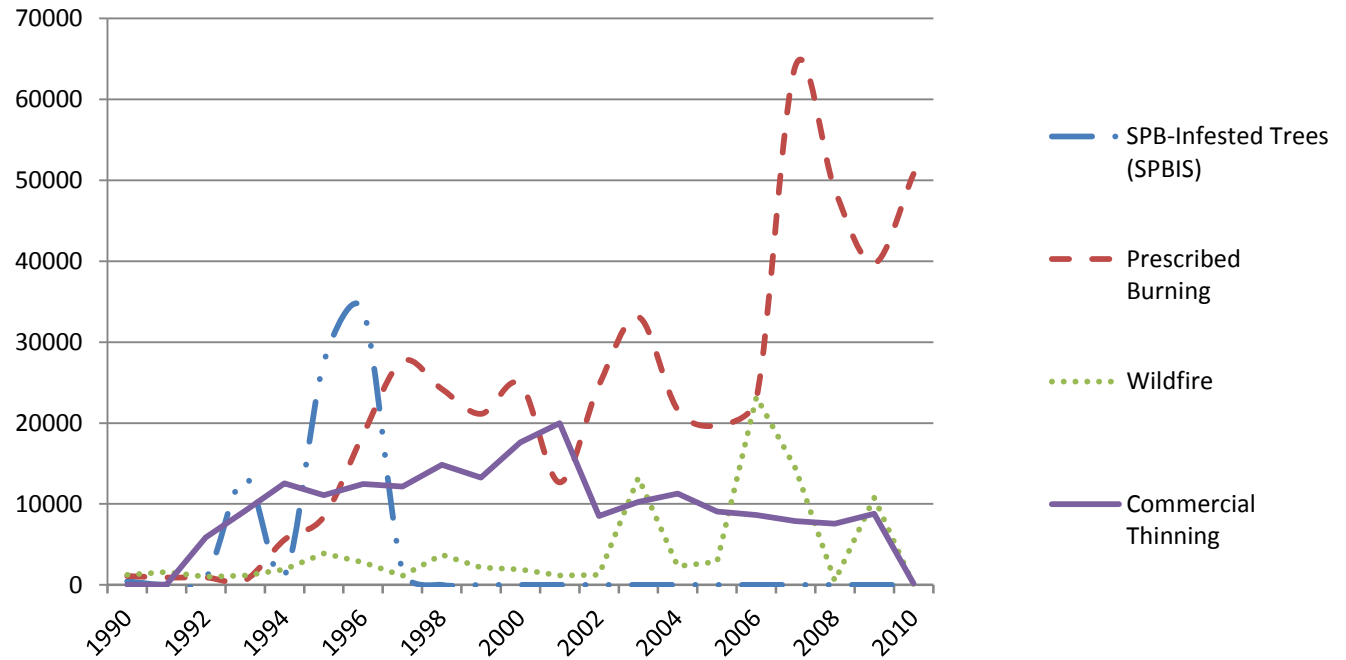
Taxa that Benefit from Restoration





# Prescribed Burning, Thinning and decreased Wildfire and SPB infestation acres within project area, 1990 – 2010

## Treatments/Infestations/Wildfires



# Due to extensive studies over the past 20 years, 0.5% of CFLRP budget needed to Monitor Effectiveness of Our Restoration Work

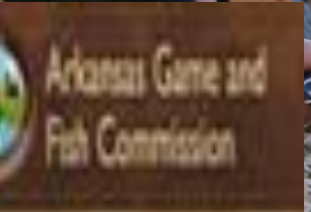
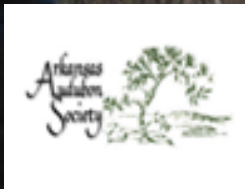


EFFORT	JOBS	CFLRP \$	PARTNERS	IN-KIND	FS Contribution
Monitor Veg	3	30,000	TNC, Arkansas Heritage	30,000	10,000
Monitor Birds	3	32,000	Audubon Arkansas	10,000	10,000
Monarch	10	10,000	Schools, Public	5,000	15,000
Job Corp	10	2,000	Job Corp	1,000	1,000
YCC	11	40,000	Local High Schools	2,000	10,000
Economics	1	10,000	Sebascott Economic Dev.	10,000	
Monitor Soils Water	1	8,000	Southern Research Station		8,000
<b>Total</b>	<b>39</b>	<b>\$132,000</b>	<b>Partner and FS Contribution \$112,000</b>	<b>\$58,000</b>	<b>\$54,000</b>

Year	FS Contribution	Arkansas Game & Fish Commission	Nation Wild Turkey Federation	Arkansas State University	Audubon Arkansas	CFLR Request	Total Project Cost
2012	166,070	31,200		8,500	1,500	30,000	237,270
2013	31,470	43,000	15,000	5,000	1,500	40,000	135,970
2014	31,470	31,200	15,000	5,000	1,500	40,000	124,170
2015				19,196			19,196
<b>Total</b>	<b>\$229,010</b>	<b>Partner and USFS Contribution Total \$406,410</b>				<b>\$110,000</b>	<b>\$516,606</b>





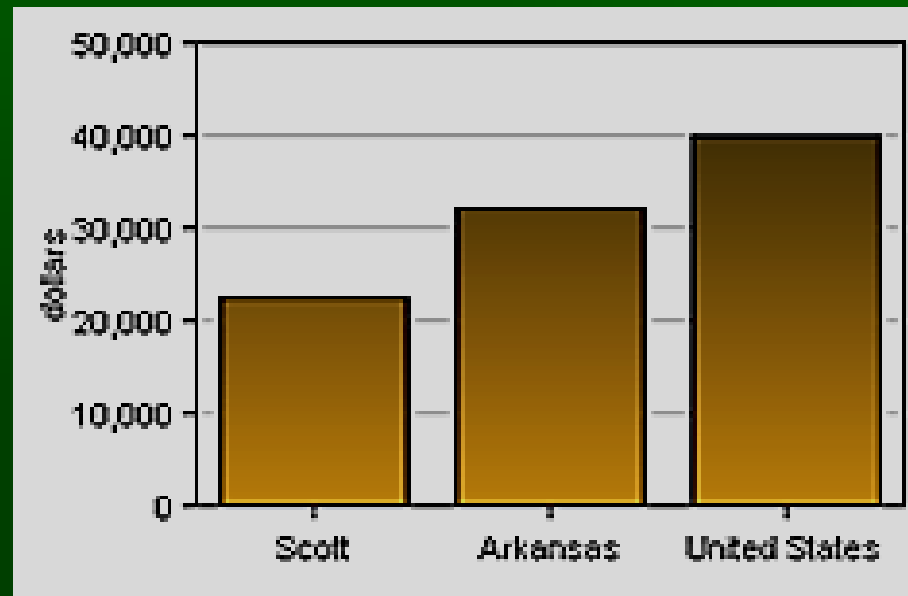


**Grad Students Funded: Turkey Research To Examine Responses to Prescribed Burning: CFLR \$110,000 Partnerships and USFS \$406,000**





**Local non-profit SebaScott (\$10,000/yr) will monitor local influx of \$2.4 million on Jobs and Community Service Jobs (motels, restaurants, etc)**





## **CFLRP will further benefits local economies by funding jobs for youth.**

**Addition to creating FS hires, partnerships and contracts,**

- **Hire local high school students with our Youth Conservation Corp Program (\$40,000/yr)**
- **Job Corp funding of \$2,000/yr**
- **Monarch Watch at \$10,000/yr hire college and high school students.**



**Monarch Watch (Kansas University) will receive \$10,000/yr to hire students to collect and propagate pollinator plants at ONF Seed Orchard and NRCS Small Farm Research Station**



**GOAL: students to plant 2,0000 acres  
of Pollinator Plants**

**3 EAST Lab Schools Involved  
Within Project Area**

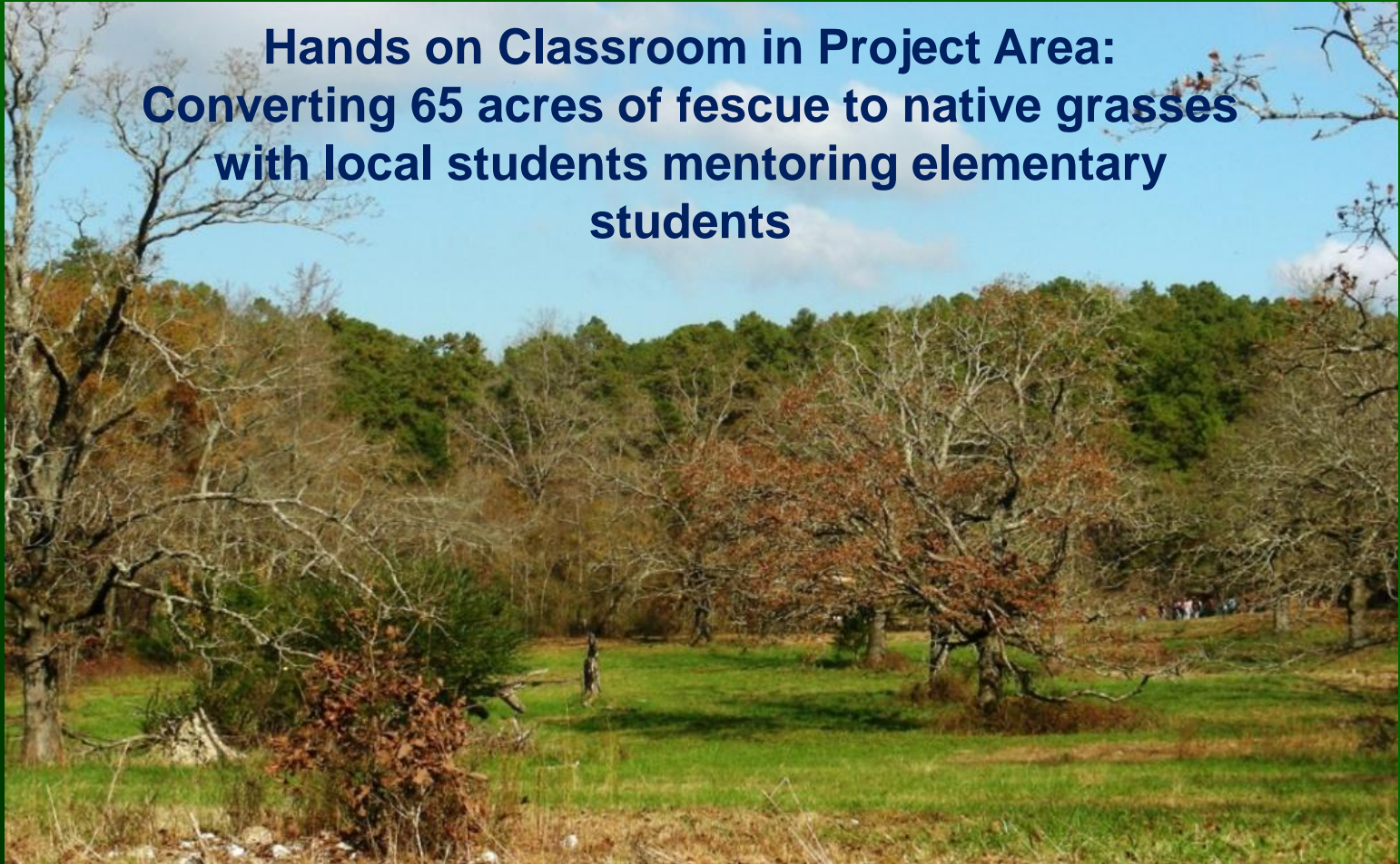
***With local knowledge comes respect for our native  
systems!***





**Educational Efforts: Audubon Arkansas (\$16,000/yr) to lead the 3 EAST Lab Schools to educate local communities on importance of native landscapes.**

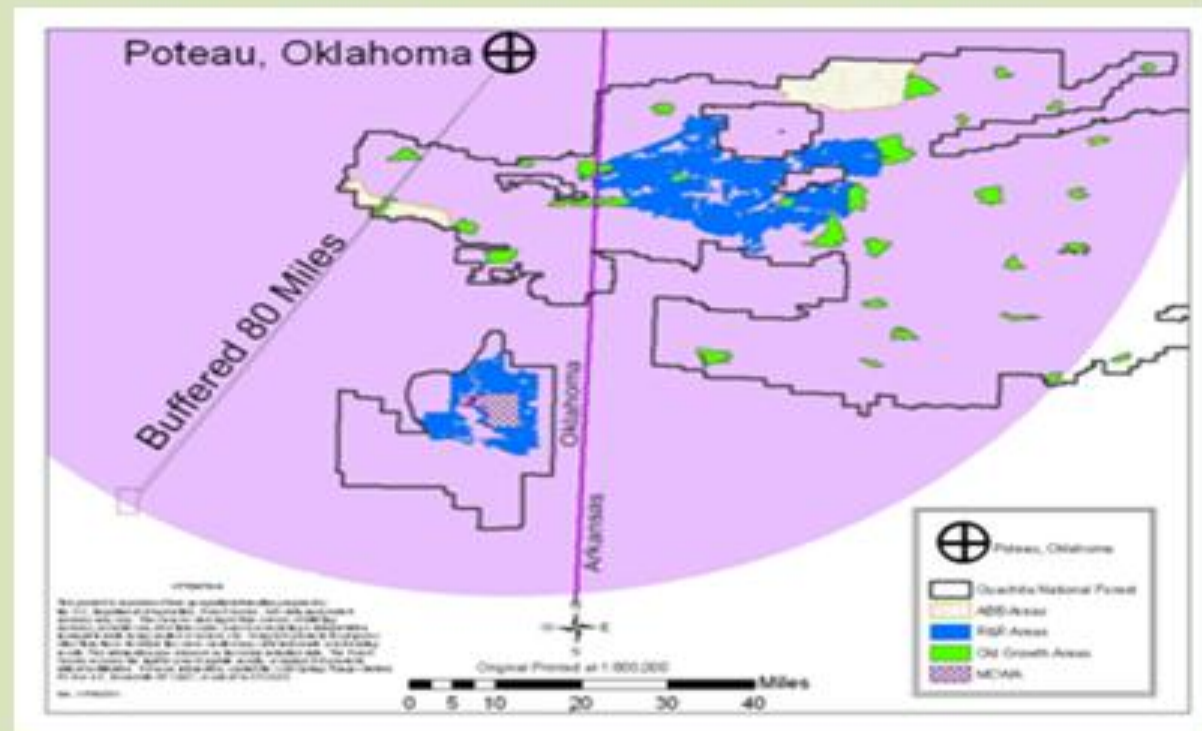
**Hands on Classroom in Project Area:  
Converting 65 acres of fescue to native grasses  
with local students mentoring elementary  
students**





## Other CFLRP benefits: Biofuel production, Working to Provide small diameter wood to AES

An 80-mile radius from the AES Power Plant encompasses most of the project area.







**This work for the last 20 years  
and continuing into the future**

**-will apply principles of landscape  
and restoration ecology**

**-is supported by research results**

**-has community support**

**-is restoring ecological balance  
and expanding economic  
opportunities**





