

CFLRP Request for Proposals Webinar

Welcome!

A few things as we get started...

- Please use the phone line for audio by dialing in to 888-844-9904 (9404768#). Lines are unmuted.
- Please introduce yourself in the chatbox!



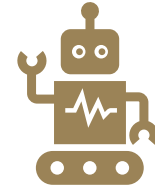
We'll get started momentarily

Session Objectives

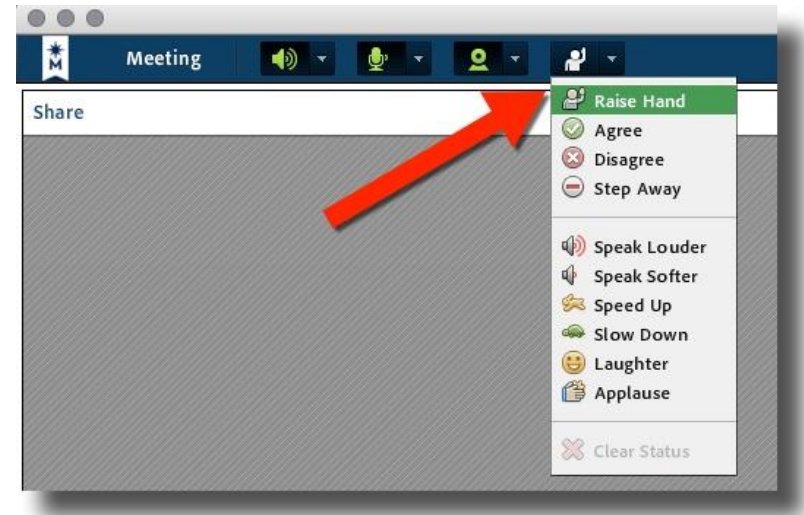
- Provide an overview of the CFLRP request for proposal process
- Orient potential applicants to the proposal template and supporting documents
- Provide resources for support
- Answer questions and identify next steps



Webroom Orientation



- All lines are muted. To unmute your line and join the conversation press *6
- Use the chatbox for questions at any point
- If you're hearing an echo, please turn off your computer speakers
- Select the icon dropdown menu at the top of your screen and click "Raise Hand"
- The session is being recorded



Poll Time





Jessica Robertson

Integrated Restoration Coordinator
Forest Management, Range Management, and Vegetation
Ecology
USDA Forest Service



Approach with results on the land and in communities

- **Produces outsized results on the landscape**
 - 11% of acres & 9% spending -- produced 19% of haz fuels, 15% timber volume, 26% veg improved
- **Generates economic and community benefits**
 - Supported average of 5,440 jobs yearly
- **Attracts significant partner investments**
 - \$470 million in partnership (\$1 invested attracts \$1.80)



Approach with results on the land and in communities

- **Enhances social license and community support**
 - 60% of CFLRP participants, reported decreased conflict
 - 81% agreed more restoration happens due to collaboration
- **Initial study results show collaboration results in more acres treated**
 - Collaboration is associated with increases in efficiency
 - Collaborative projects are more complex and meet greater diversity of objectives

2018 Farm Bill

Reauthorized CFLRP until FY23

Reauthorization increased *authorization* for appropriation to \$80M

- \$~40M in FY20 and FY21

Besides timeline considerations and the funding cap, there were no other changes to statutory program requirements

Ranked 2020 CFLRP Proposals

| Northern Blues | Top project recommended - <u>FUNDED</u> |
|--------------------------------------------|------------------------------------------------|
| Deschutes Collaborative Forest Project | 2010 Extension recommended |
| Dinkey Landscape | 2010 Extension recommended |
| Rio Chama | Top tier new project recommended |
| Southwest Colorado | Top tier new project recommended |
| Western Klamath Mountains | Top tier new project recommended |
| North Central Washington | Top tier new project recommended |
| North Yuba Forest Partnership | Top tier new project recommended |
| Rogue Basin Landscape Restoration | Second tier new project recommended |
| Pisgah Restoration Initiative | Second tier new project recommended |
| Western Central Idaho Initiative | Second tier new project recommended |
| Idaho Panhandle National Forests | Second tier new project recommended |
| Interior Highlands Coastal Plains Arkansas | Second tier new project recommended |
| Ravalli Roots | Alternate new project recommended |
| Colorado Front Range | Alternate new project recommended |
| Northeast Washington Selkirks | Alternate new project recommended |

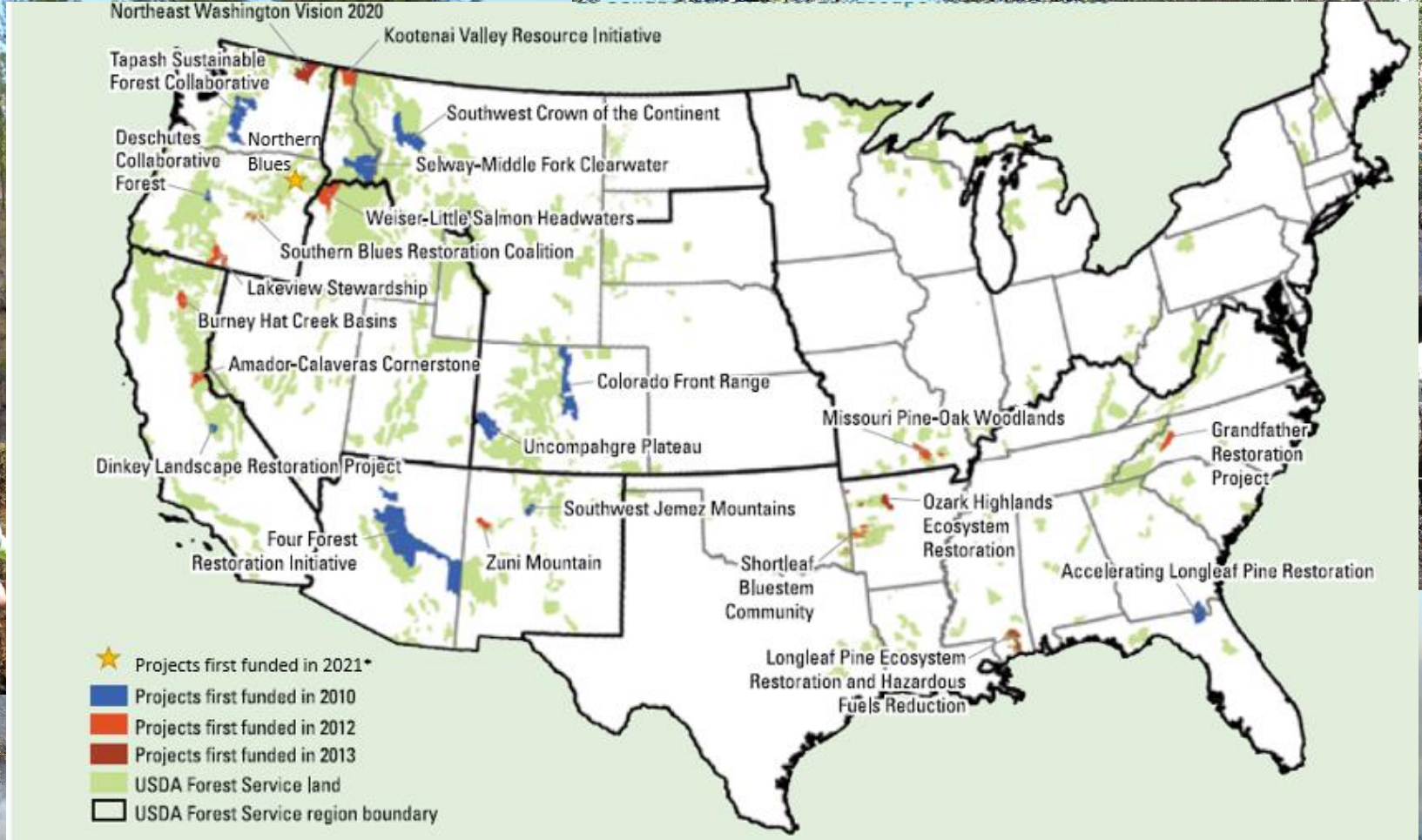
CFLRP Extension Authorization

After consulting with the advisory panel, if the Secretary determines a proposal continues to meet the eligibility criteria...

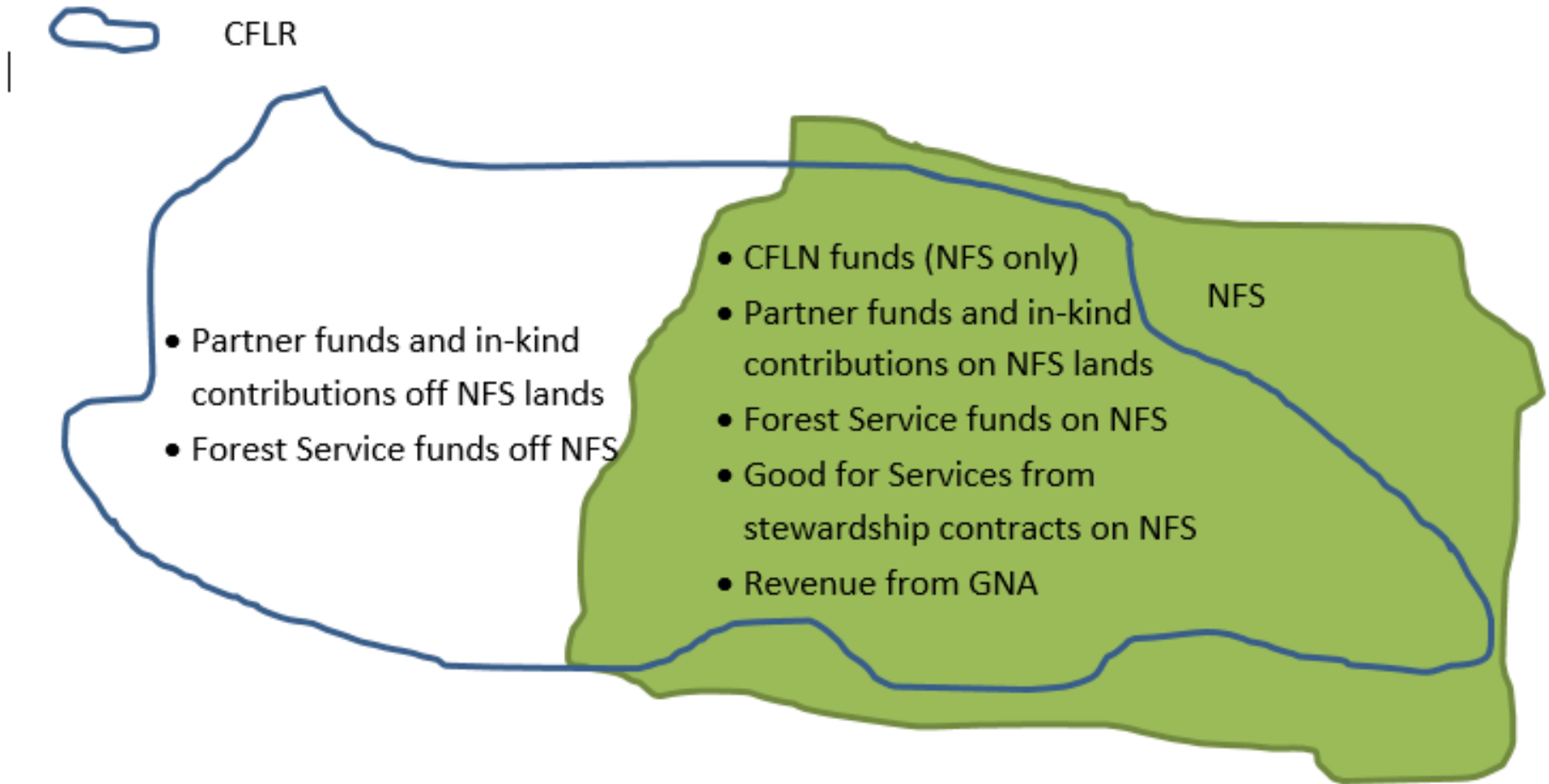
- The Secretary, on a case-by-case basis, may issue for the proposal a 1-time extension
- **“...shall be for the shortest period of time practicable to complete implementation of the proposal... not exceed 10 years”**



Collaborative Forest Landscape Restoration Projects



Overview of CFLR Match



Forest Service Budget Modernization

| | |
|------------------------------------|-----------------------------------------------------------------|
| Discretionary/Program Costs | Contracts, agreements, materials, supply, fleet |
| Salary and Expense Costs | Salary, overtime, awards, travel, training, transfer of station |

- Program Budget Line Items (including “CFLN”) only cover Discretionary/Program costs
- Salary time spent on CFLRP implementation and monitoring counts as match
- \$3M cap on discretionary CFLN request annually



CFLRP Common Monitoring Strategy

- Will apply for all extensions 5+ years
- Strategy outline and core indicators on CFLRP website - <https://www.fs.fed.us/restoration/CFLRP/guidance.shtml>
- Staff are available to consult with and support projects as they transition to the common strategy



CFLRP Request for Proposals Overview



CFLRP Request for Proposals Process

Materials on CFLRP
website (Overview
page):

<https://www.fs.fed.us/restoration/CFLRP/overview.shtml>

➡ “Application
Process Overview
and Instructions for
Applicants”



Request for Proposals Steps

1. CFLRP project practitioners develop extension proposals
2. Forest Service Regional Offices review and confirm continued eligibility
3. Regional Offices submit proposals to Washington Office by May 28
4. CFLRP Federal Advisory Committee reviews and provides recommendations for the Secretary
5. Secretary (or delegate) makes final decisions on project selections

Earliest expected time CFLRP Advisory Committee convenes: June

Earliest expected time Secretary will issue decisions: July–September

CFLRP Advisory Committee

Committee members are appointed based on their expertise and knowledge in seven areas named in the CFLRP statute:

- Ecological restoration
- Fire ecology
- Fire management
- Rural economic development
- Strategies for ecological adaptation to climate change
- Fish and wildlife ecology
- Woody biomass and small-diameter tree utilization

<https://www.fs.fed.us/restoration/CFLRP/advisory-panel.shtml>

Example Eligibility Criteria

Full text: <https://www.fs.fed.us/restoration/CFLRP/overview.shtml>

Landscapes must be at least 50,000 acres and mostly National Forest System lands

Proposals developed through a collaborative process involving multiple stakeholders

Demonstrate need for restoration and have a substantially complete strategy

Include investment and funding plans

Accessible by wood-processing infrastructure at appropriate scale

Incorporate best available science and scientific application tools

Fully maintain or restore structure and composition of old growth in context of landscape resiliency

Does not establish permanent roads

Provides benefit to local economies

Eligibility and Selection Criteria

Eligibility Criteria

- Requirements from CFLR statute
- “Pass/fail” evaluation by Regions

Selection Criteria

- Selection criteria from CFLR statute
- Required considerations for Secretary and FACA
- Used to rank projects for selection

- Forest Service selection factors
 - Define success for selection criteria
 - Incorporate program experience to date

Benchmark for your proposal!

Example Selection Criteria and FS Factors

(A) The strength of the proposal and strategy

Resources, service, values at risk and need for action

Describe significant resources, values, and services at risk that warrant investment.

Strategic treatment at needed scales

Demonstrate how treatments will be strategically implemented within the landscape.

Readiness to implement strategy:

Demonstrate project planning is complete and/or a plan is in place to reach completion in time for treatment.

Unit Capacity:

Demonstrate capacity to successfully implement the project, including leadership and strong partner support.

2021 Request for Proposals

Please note: this is a limited request for proposals open only to 2012 CFLRP projects applying for an extension for potential funding starting in Fiscal Year 2022.

Proposal materials are due to the Washington Office on May 28, 2021. Proposals are developed collaboratively and submitted via Forest Service Regional Offices. These extension requests will be evaluated by the [CFLRP Advisory Committee](#), who will then develop recommendations for the Secretary of Agriculture's (or delegate) final selection decisions. For more information on the process and requirements, please see "application process overview" document below.

- [Application Process Overview and Instructions for Applicants \(.docx, 87 KB\)](#)
- [Proposal template for 2012 CFLRP Project Extensions \(.docx, 58 KB\)](#)
- Appendices
 - [Attachment A: Landscape Restoration Map \(.docx, 50 KB\)](#) ([See a 4 minute Webmap tutorial recording...](#))
 - [Attachment B: Planned Treatments \(.xlsx, 33 KB\)](#)
 - [Attachment C: Utilization of Forest Restoration Byproducts \(.xlsx, 24 KB\)](#)
 - [Attachment D: Collaborative Membership \(.xlsx, 28 KB\)](#)
 - [Attachment E: Letter of Commitment \(.docx, 30 KB\)](#)
 - [Attachment F: Funding Plan \(.xlsx, 442 KB\)](#)
 - [Attachment G: Forest Supervisor Letter \(.docx, 29 KB\)](#)

<https://www.fs.fed.us/restoration/CFLRP/overview.shtml>

CFLRP 2021 Application Process Instructions

Limited Request for Proposals – 2012 CFLRP Project Extensions

Contents

| | |
|-----------------------------------------------------------------|----|
| Proposal Process Overview: | 3 |
| Timeline: | 3 |
| Who Can Apply? | 3 |
| Instructions for Regional Office Review Team: | 4 |
| Eligibility Criteria: | 4 |
| Instructions for Applicants – Proposal Submissions | 7 |
| Proposal Template Instructions and Guidance | 8 |
| References: How will this proposal be evaluated? | 18 |
| CFLRP Selection Criteria (from CFLRP Statute)..... | 18 |
| Forest Service Selection Factors..... | 18 |

<https://www.fs.fed.us/restoration/CFLRP/overview.shtml>

CFLRP Request for Proposals Materials

Materials on CFLRP
website (Overview
page):

[https://www.fs.fed.us
/restoration/CFLRP/
overview.shtml](https://www.fs.fed.us/restoration/CFLRP/overview.shtml)

➡ Proposal and
appendices



Proposal Template Sections

Eligibility criteria and selection factors

Executive Summary*

Proposal Overview

Past Performance*

Applying Learning to the Future*

Readiness to Implement Strategy

Economic, Social and Ecological Context

Proposed Extensions and Treatments

Desired Conditions

Ecological Restoration Strategy

Wildfire Risk Reduction

Benefits to Local Communities

Utilization of Forest Restoration Byproducts

Collaboration

Multi-party Monitoring

Unit Capacity

Project Funding

Combined narrative that together addresses the eligibility criteria and FS selection factors

- *NOT a one-to-one crosswalk*

Example

19. Describe the multiparty monitoring process in place to track progress towards stated goals and promote adaptive management.

- a. Briefly describe your project's current multi-party monitoring program. You may include a link to your monitoring plan or recent monitoring report if available.
- b. If your project will be extended for five years or more, show how your monitoring plan incorporates core questions and indicators from the Common Monitoring Strategy.
- c. Provide evidence that your monitoring plan is designed to support adaptive management with features like leadership involvement in shaping the monitoring plan, stakeholder involvement in question formulation, and frequent reporting of results. What did you do differently in response to multi-party monitoring results?
- d. Demonstrate the linkages between the project goals described and what is being monitored.
- e. Credibly show how your treatments can be expected to change your landscape over time.

In your narrative response, you may consider addressing:

- How have you built or ensured trust amongst stakeholders with regard to monitoring results? Is there any risk of bias, and if so how is it being addressed?
- Where are data archived? Are they shared with all parties? Available to the general public?
- Where appropriate, did past or planned monitoring involve coordination with other collaboratives or Forests in the Region?

Example

Economic, Social, and Ecological Context:

Guidance: This section is about 1) describing key context driving this proposal and CFLRP strategy and 2) the resources, services, and/or values at risk – they “why” of the proposal.

Examples: Per individual CFLRP Advisory Committee (FACA) member feedback, see the [Northern Blues](#) and [Western Klamath](#) proposals for strong examples of how to approach describing the social and economic context. See [West Central Idaho](#) proposal for a strong example of how to approach the ecological context.

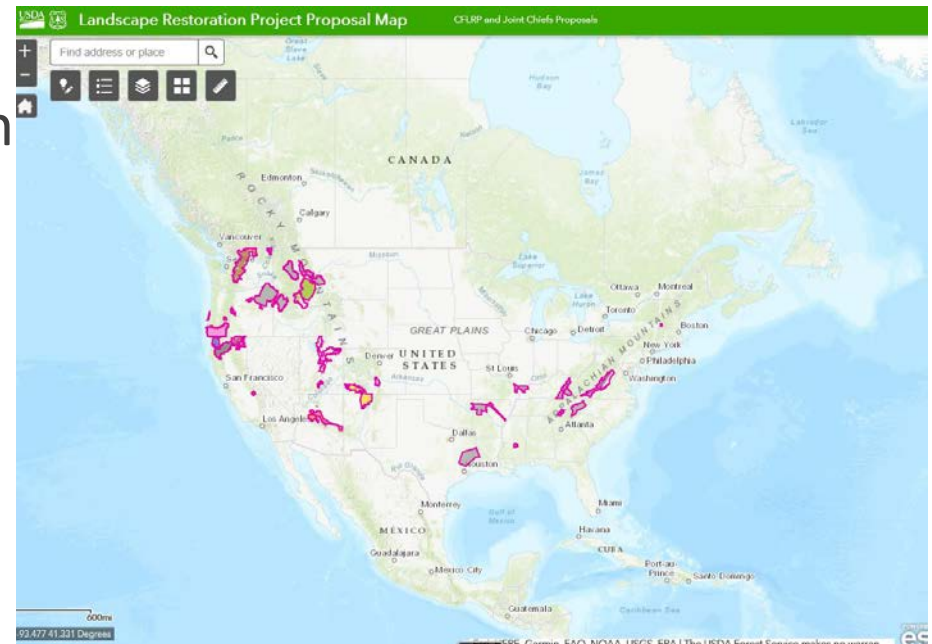
If you are looking for resources to help address this section, here are some to consider:

- Current economic and social conditions and resources, services, and values at risk
 - For a wealth of economic data at the county level, see the “Economic Profile System” at <https://headwaterseconomics.org/tools/economic-profile-system/about/>
 - Demographic data associated with counties can be found at <https://headwaterseconomics.org/dataviz/forest-indicators/>
 - Information on populations at risk available here: <https://headwaterseconomics.org/tools/populations-at-risk/>
 - Insight into local social and economic conditions and drivers can be solicited from:

| Proposal Template Sections | Supporting Attachment |
|-----------------------------------------------------|------------------------------|
| Proposal Overview | A |
| Readiness to Implement Strategy | G |
| Proposed Extensions and Treatments | B |
| Utilization of Forest Restoration Byproducts | C |
| Collaboration | D, E |
| Project Funding | F |

Attachment A: Webmap

1. Update boundary (if needed)
2. Select relevant spatial layers to support narrative
3. Review spatial layers and note discrepancies or preferred data sources
4. Upload a PDF with general plan ownership, other key context



Attachment B: Planned Treatments

CFLRP proposals are ***not*** expected to include ALL of the core treatment types below in their strategy - highlight those treatments that are core to your stated treatment objectives. Note that there are options to use "other"

Estimated treatments should include ***all*** planned treatments in the proposed CFLR landscape, regardless of landownership type. Provide an estimate of the % you expect to occur on NFS lands

| Core Restoration Treatment Types | <i>Please briefly fill in additional background information for the prompts below</i> | Year 1* | Year 2 | Year 3 | Year 4 | Years 5-10 | TOTAL | Key treatment objectives | Estimated % accomplished on NFS lands (across all ten years) | Other landownership types (other federal, tribal, state, private, etc.) where treatments will occur |
|--------------------------------------------------------------------------------|-------------------------------------------------------------------------------------------------|---------|--------|--------|--------|------------|-------|--------------------------|--------------------------------------------------------------|-----------------------------------------------------------------------------------------------------|
| Hazardous Fuels Reduction (acres) | | | | | | | | | | |
| <i>Mechanical Thinning (acres)</i> | | | | | | | | | | |
| <i>Prescribed Fire (acres)</i> | | | | | | | | | | |
| <i>Other (acres)</i> | | | | | | | | | | |
| Wildfire Risk Mitigation Outcomes - Acres treated to mitigate wildfire risk | | | | | | | | | | |
| Wildfire Risk Mitigation Outcomes | Please list the source of the WUI designation (e.g. local assessment, spatial data layer, etc.) | | | | | | | | | |
| Invasive Species Management (acres) | | | | | | | | | | |

(etc...)

Attachment C: Utilization of forest restoration byproducts

*Note that acres treated includes all acres treated within the CFLRP boundary. However, the projected annual harvested volume is only for NFS lands.

| Fiscal Year | Estimate of acres treated annually that will generate restoration byproducts | Total projected annual harvested volume (ccf) from NFS lands | Expected percentage commercially utilized* from NFS lands |
|----------------|---------------------------------------------------------------------------------------------------|--------------------------------------------------------------|-----------------------------------------------------------|
| 2020 | | | |
| 2021 | | | |
| 2022 | | | |
| 2023 | | | |
| 2024 | | | |
| 2025 | | | |
| 2026 | | | |
| 2027 | | | |
| 2028 | | | |
| 2029 | | | |
| TOTALS: | 0 | 0 | 0 |
| | <i>Estimated % of TOTAL acres accomplished on NFS lands:</i> | | |
| | <i>Estimated % of TOTAL acres accomplished on other landownerships within the CFLRP boundary:</i> | | |

*Commercially utilized refers to the volume you expect to sell across all product classes (sawtimber, biomass, firewood, etc.)

Attachment E: Letter of Commitment

[Letter of Commitment Guidance and Considerations](#)

A letter of commitment articulates the intention of participants directly involved in the development and/or implementation of the proposal. The letter should provide evidence of the robust engagement of diverse stakeholders and partners through the collaborative process, reflecting shared ownership in CFLRP strategy implementation and monitoring results within the CFLRP landscape. Where possible, consider highlighting partner roles and contributions to successful realization of the CFLR strategy.

To aid the CFLRP Advisory Committee in their review of the CFLRP proposal extensions, **consider a clear articulation of why – from the collaborative and partner perspective – this CFLRP project warrants an extension.**

Suggested guidance regarding signatories:

- Only entities that will be substantively involved in the project are requested to ‘sign’ the letter of commitment. ‘Signing’ the letter can include an electronic signature or simply listing the name, title, and affiliation of the signatory.
- Please note: Individuals involved in developing and drafting the CFLRP proposal may not be on the CFLRP “FACA” Advisory Committee. Likewise, individuals with direct involvement in a local collaborative group that is applying for a new CFLRP project or extension cannot be on the FACA committee. More information will be posted on the [CFLRP Advisory Committee webpage](#).

Attachment G: Letter of Leader Commitment

ATTACHMENT G – Forest Leadership Letter of Commitment

The signature(s) below reflects the Forest Supervisor(s) awareness of the eligibility, implementation, and monitoring requirements for the Collaborative Forest Landscape Restoration Program (CFLRP), as described in [CFLRP proposal instructions document](#). Prior CFLRP evaluations have highlighted the importance of leadership intent and support for CFLRP strategy implementation and a commitment to continued collaboration through project implementation and monitoring. The signature(s) below is/are taken to reflect the unit(s)' support for and commitment to the CFLRP project as outlined in the proposal.

2021 Request for Proposals

Please note: this is a limited request for proposals open only to 2012 CFLRP projects applying for an extension for potential funding starting in Fiscal Year 2022.

Proposal materials are due to the Washington Office on May 28, 2021. Proposals are developed collaboratively and submitted via Forest Service Regional Offices. These extension requests will be evaluated by the [CFLRP Advisory Committee](#), who will then develop recommendations for the Secretary of Agriculture's (or delegate) final selection decisions. For more information on the process and requirements, please see "application process overview" document below.

- [Application Process Overview and Instructions for Applicants](#) (.docx, 87 KB)
- [Proposal template for 2012 CFLRP Project Extensions](#) (.docx, 58 KB)
- Appendices
 - [Attachment A: Landscape Restoration Map](#) (.docx, 50 KB) ([See a 4 minute Webmap tutorial recording...](#))
 - [Attachment B: Planned Treatments](#) (.xlsx, 33 KB)
 - [Attachment C: Utilization of Forest Restoration Byproducts](#) (.xlsx, 24 KB)
 - [Attachment D: Collaborative Membership](#) (.xlsx, 28 KB)
 - [Attachment E: Letter of Commitment](#) (.docx, 30 KB)
 - [Attachment F: Funding Plan](#) (.xlsx, 442 KB)
 - [Attachment G: Forest Supervisor Letter](#) (.docx, 29 KB)

<https://www.fs.fed.us/restoration/CFLRP/overview.shtml>

CFLRP Contacts:

- Region 1 (Northern Region): [Meghan Oswalt](#), (406) 552-5987
- Region 2 (Rocky Mountain Region): [Megan Lowell](#), (303) 275-5016
- Region 3 (Southwestern Region): [David Borland](#), (505) 842-3480
- Region 4 (Intermountain Region): [Jeff Bruggink](#), (801) 625-5357 and [Amie Anderton](#), (208) 634-0714
- Region 5 (Pacific Southwest Region): [Joe Sherlock](#), (707) 562-8686
- Region 6 (Pacific Northwest Region): [Tom DeMeo](#), (503) 808-2963
- Region 8 (Southern Region): [Mae Lee Hafer](#), (803) 637-0243
- Region 9 (Northeastern Region): [Victoria \(Tory\) Hahka](#), (906) 358-4049
- Washington Office: [Lindsay Buchanan](#), CFLRP Coordinator, (503) 808-2810, or [Jessica Robertson](#), Integrated Restoration Coordinator, (202) 205-0847



Recorded Webinars and Slides:

2019 Request for Proposals

The 2019 Request for Proposals process has ended. Please visit the CFLRP Advisory Committee page for recommendations and the ranked list of approved projects.

2019-2020 Recorded Webinars for Interested Applicants:

- Friday, July 19, 2019, 12:30-2:00pm ET: [Recording](#) and [Powerpoint presentation \(PDF\)](#)
- Thursday, August 1, 2019, 1:00-2:30pm ET: [Recording](#)
- Thursday, September 5, 2019, 2:00-3:30pm ET: [Recording](#) and [Powerpoint presentation \(PDF\)](#)
- Thursday, September 26, 2019, 2:30-4:00pm ET: [Recording](#)
- Thursday, October 31, 2019, 1:00-2:30pm ET: "*Tips on Designing Your Wood Utilization Strategy*": [Recording](#) and [Powerpoint presentation \(PDF\)](#)
- Wednesday, November 6, 2019, 3:00-4:30pm ET: "*CFLRP Tier 2 Proposal Office Hours*": [Recording](#)

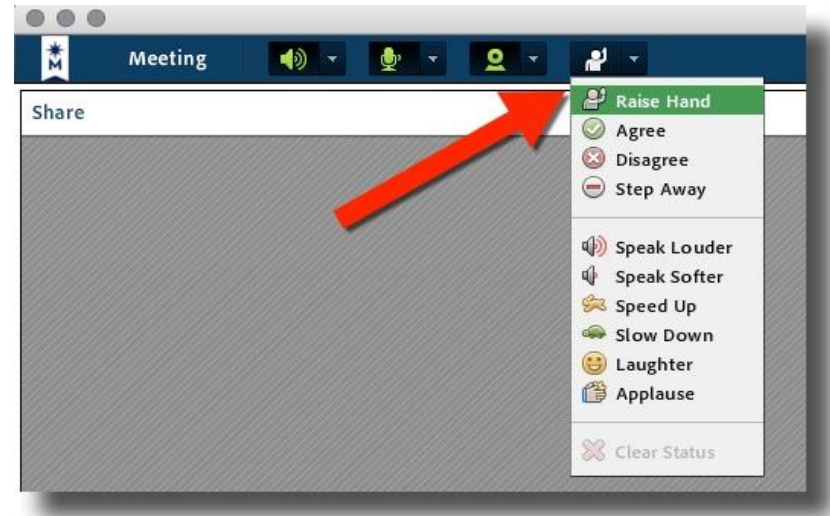




Q&A

*Press *6 to unmute
your line*

Or use the chatbox





Thank you!

All webinar recordings posted to the CFLRP website -
<https://www.fs.fed.us/restoration/CFLRP/overview.shtml>