

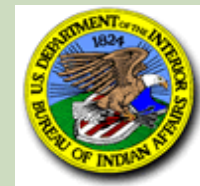
Interagency Regional Monitoring Program



Overview

Northwest Forest Plan

Regional Monitoring Program



President's Principles

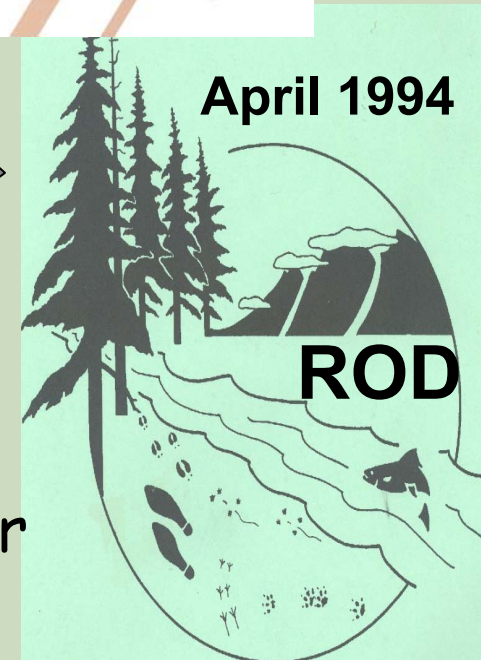
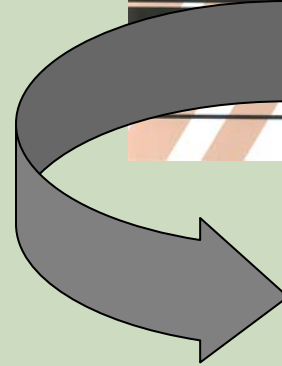
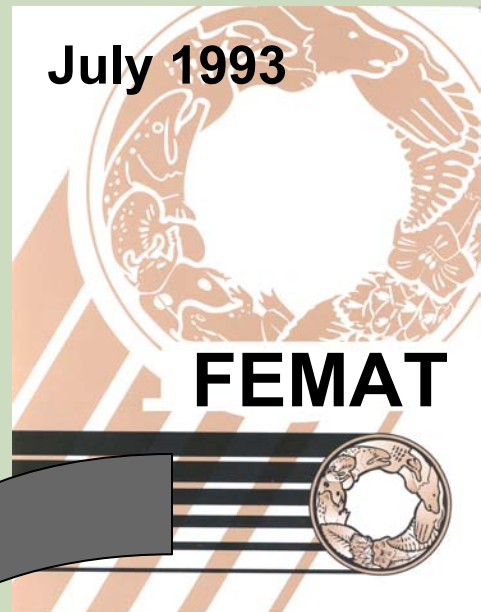
Never forget the human dimensions

Protect the long-term health of our ecosystems

Scientifically sound, ecologically credible, and legally responsible

Predictable and sustainable level of timber sales

Make the federal government work together

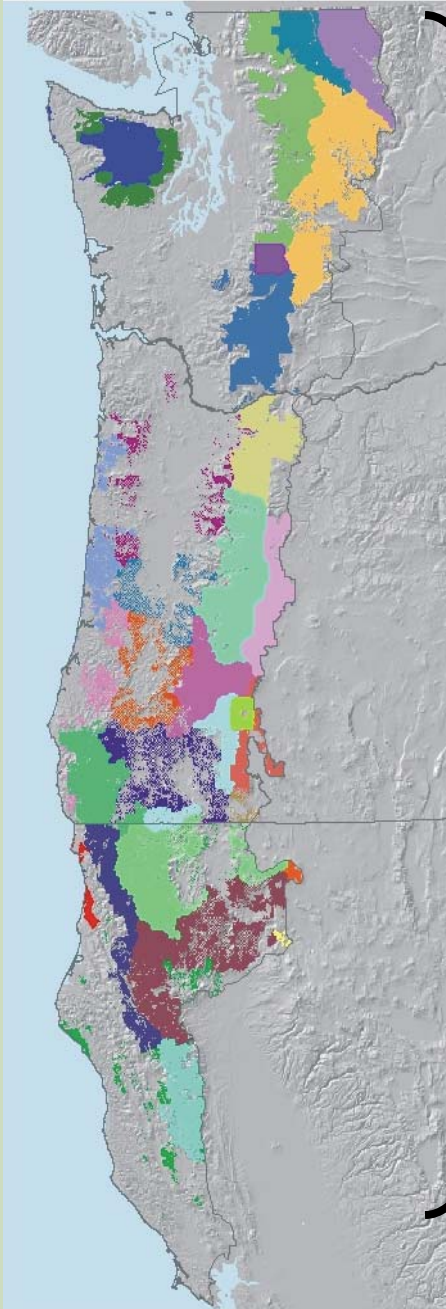


Pre 1994

NWFP Background

Record of Decision
April 1994

NW Forest Plan

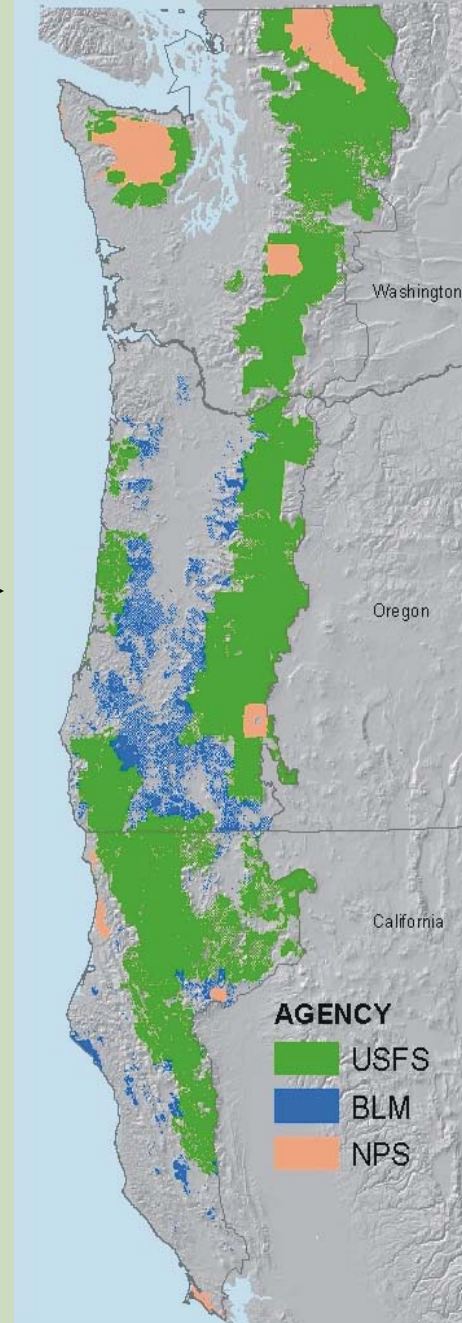


Amended 19
National Forest
and 7 BLM
District plans



Planning Boundary =
Range of Northern Spotted Owl

Federal Lands 24 million ac



NWFP Land-Use Allocations

Green - Reserved (>70%)

• Congressionally withdrawn	7.3
• Late-successional	7.4
• Riparian in matrix	2.6
• Special Areas	0.1

Orange - Non-reserved (<23%)

• Matrix (Timber emphasis)	4.0
• Adaptive Management Areas	1.5

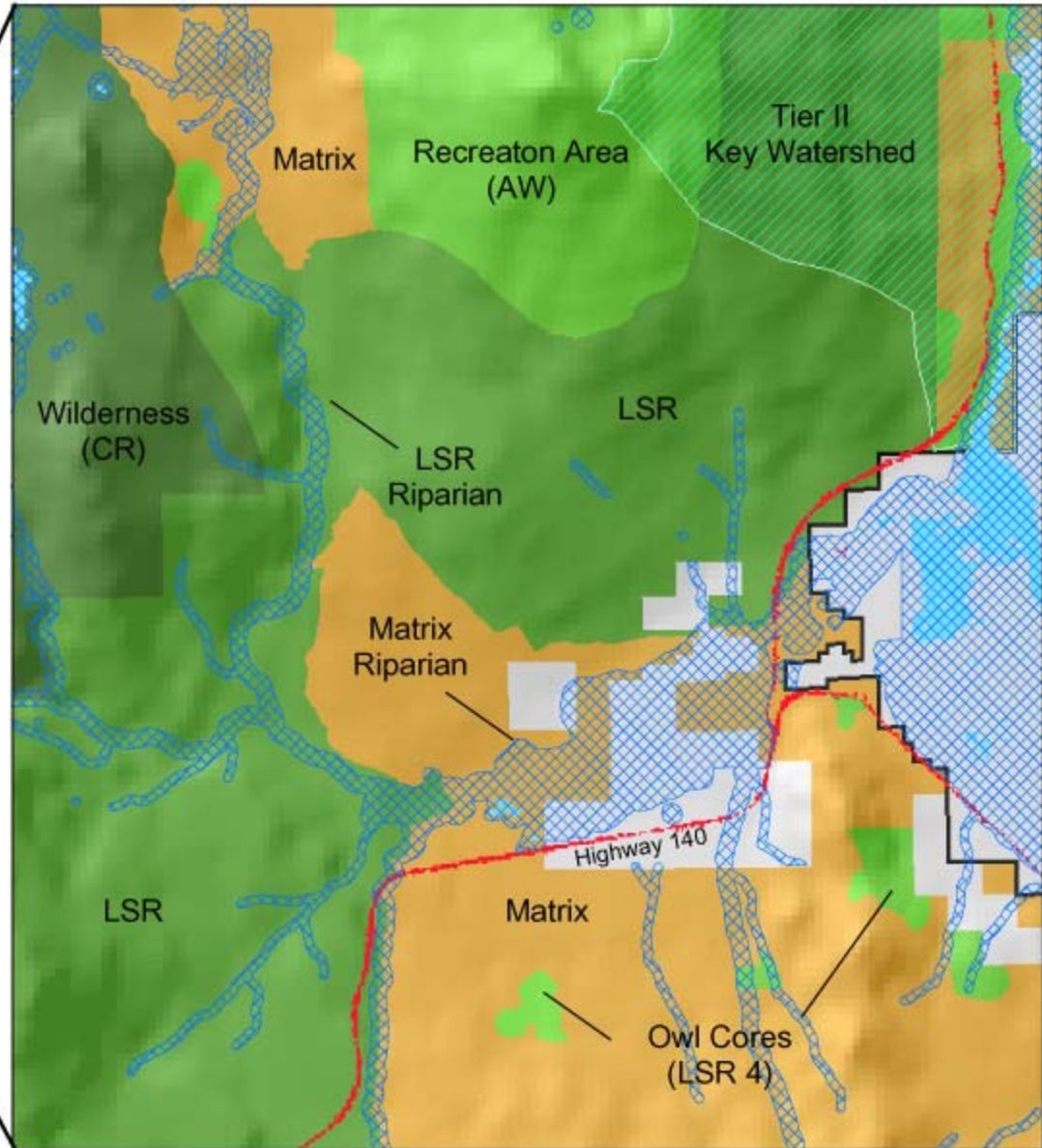
Other (6%)

• Admin sites, recreation, etc	1.5
--------------------------------	-----

Million Acres



NWFP Land-Use Allocations



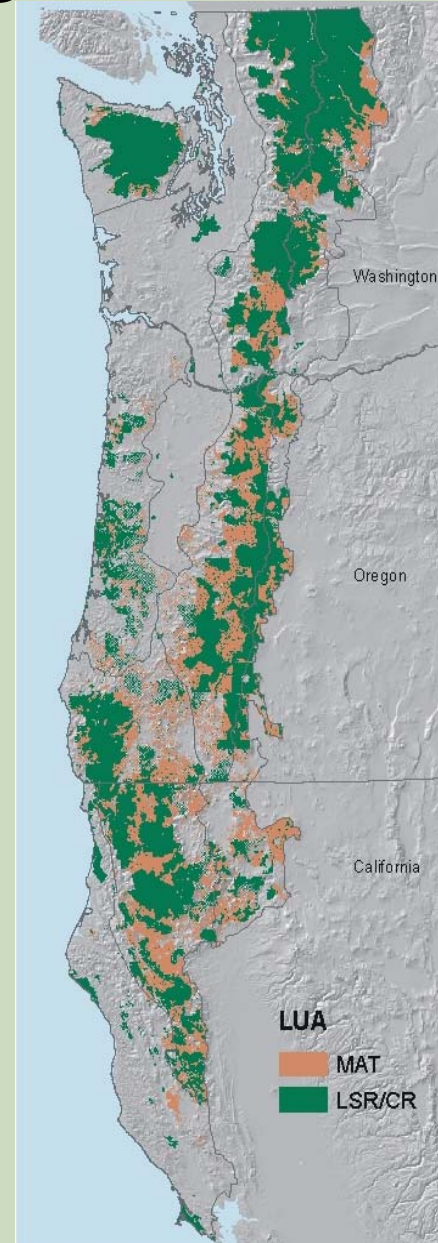
NWFP Standard & Guidelines

- * Applies to FS and BLM lands
- * > 100 S & G's
- * Rules and limits e.g.,

Westside LSR's - no harvest of stands > 80 years old

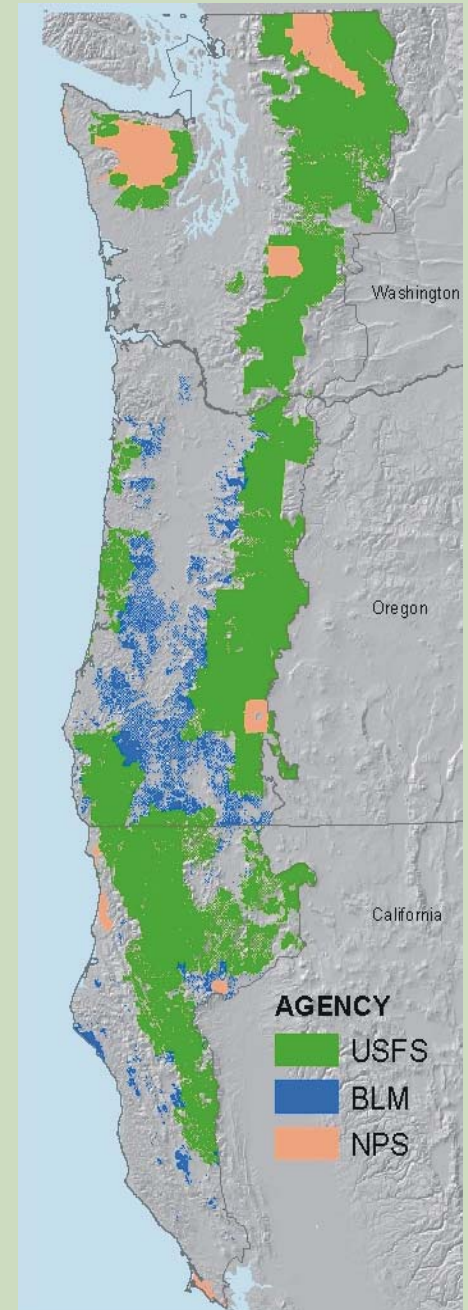
Matrix - provide a renewable supply of large down logs

Prohibit timber harvest in riparian reserves, except ...



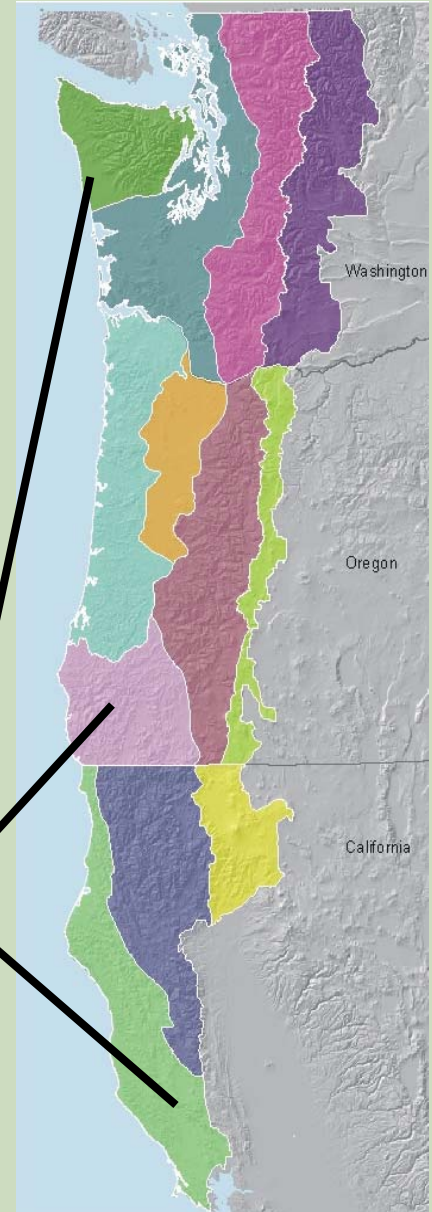
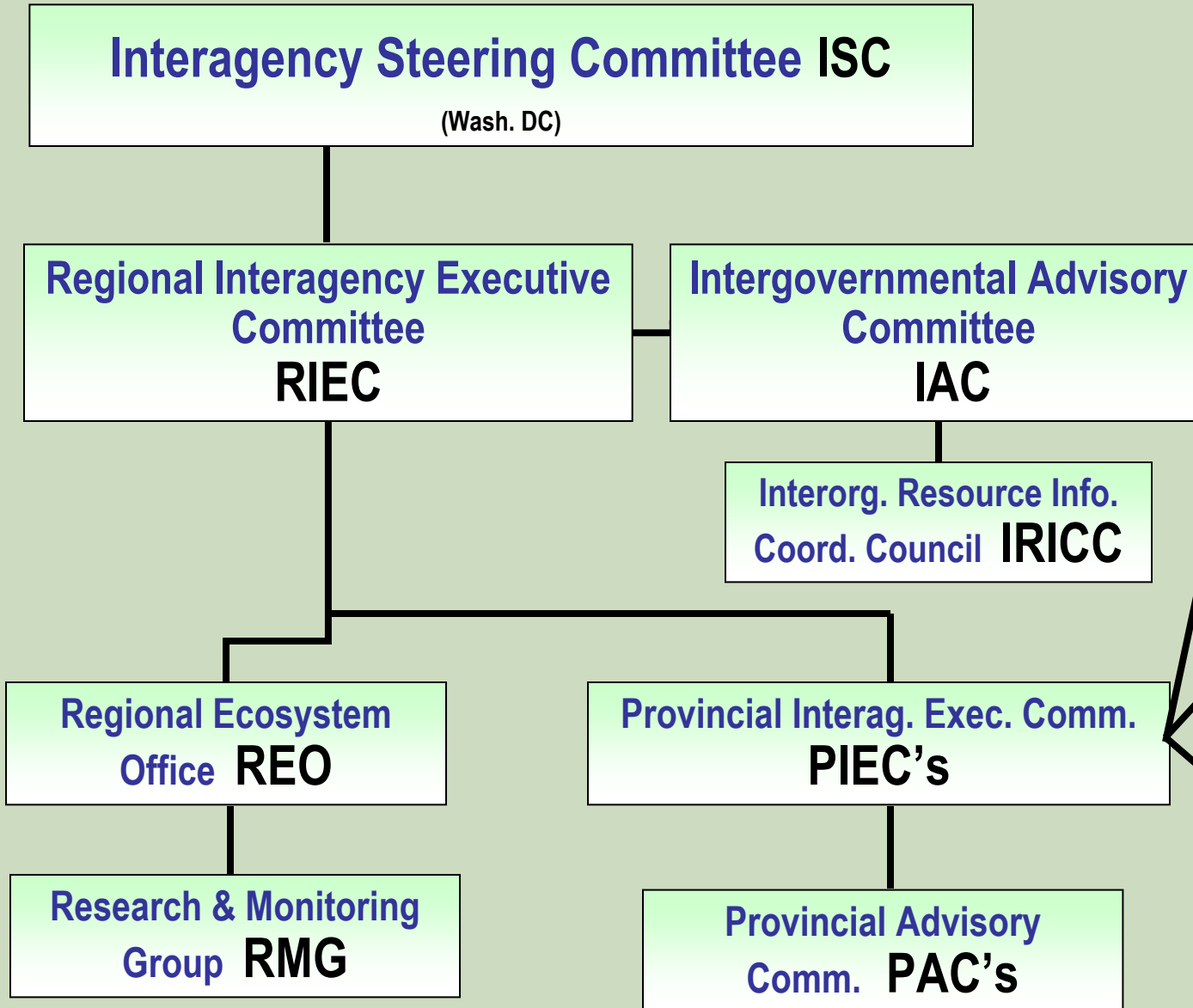
Process Requirements

- * Watershed analysis
- * Late-successional reserve assessments
- * Regional ecosystem office review
- * Survey and Manage
- * Monitoring



Interagency Structure

Planning Provinces



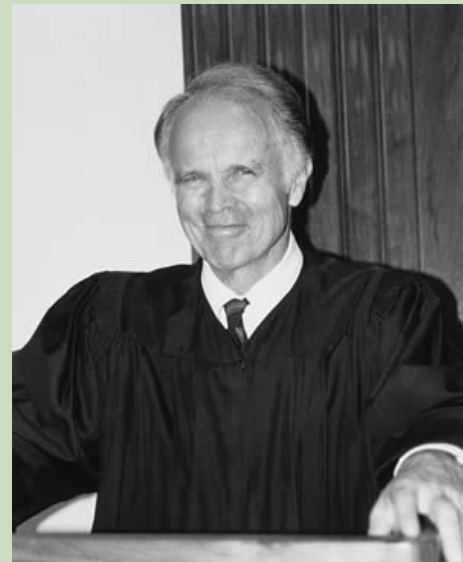
Interagency Regional Monitoring

"Monitoring is the key to building trust"
Rolf Anderson, Willamette NF

Required in 1994 Record of Decision

"Monitoring is central to the plans validity. If it is not funded, or done for any reason, the plan will have to be reconsidered."

William L. Dwyer
Judge, US District Court
December 1994



Goal of NWFP Monitoring

To provide scientifically credible information for evaluating the success of the NWFP in achieving objectives about:

- ❖ Old growth and species protection
- ❖ Socio-economic benefits
- ❖ Watershed restoration

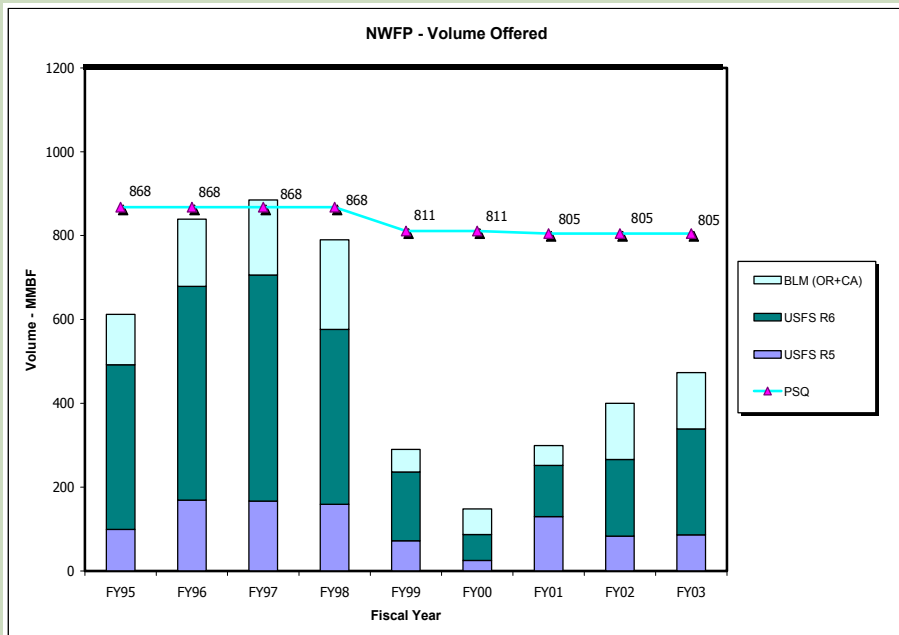


Implementation Monitoring

Standard & Guidelines Compliance

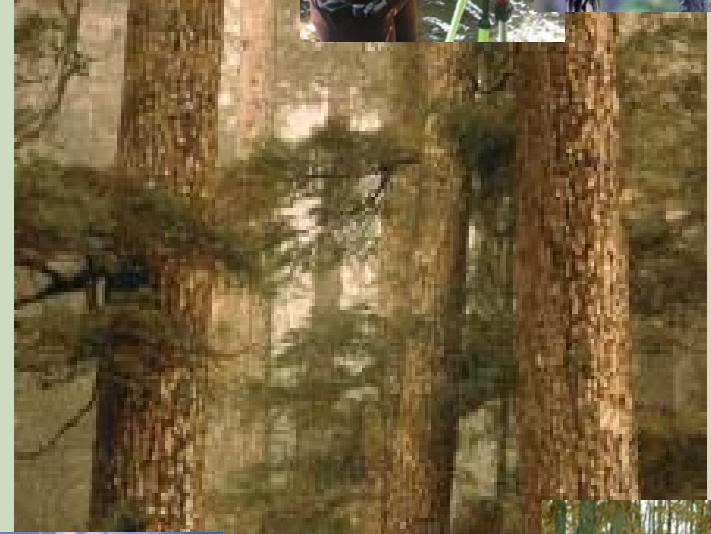
- Provincial Advisory Committees
- Sample of 250 projects since 1994

Accomplishments



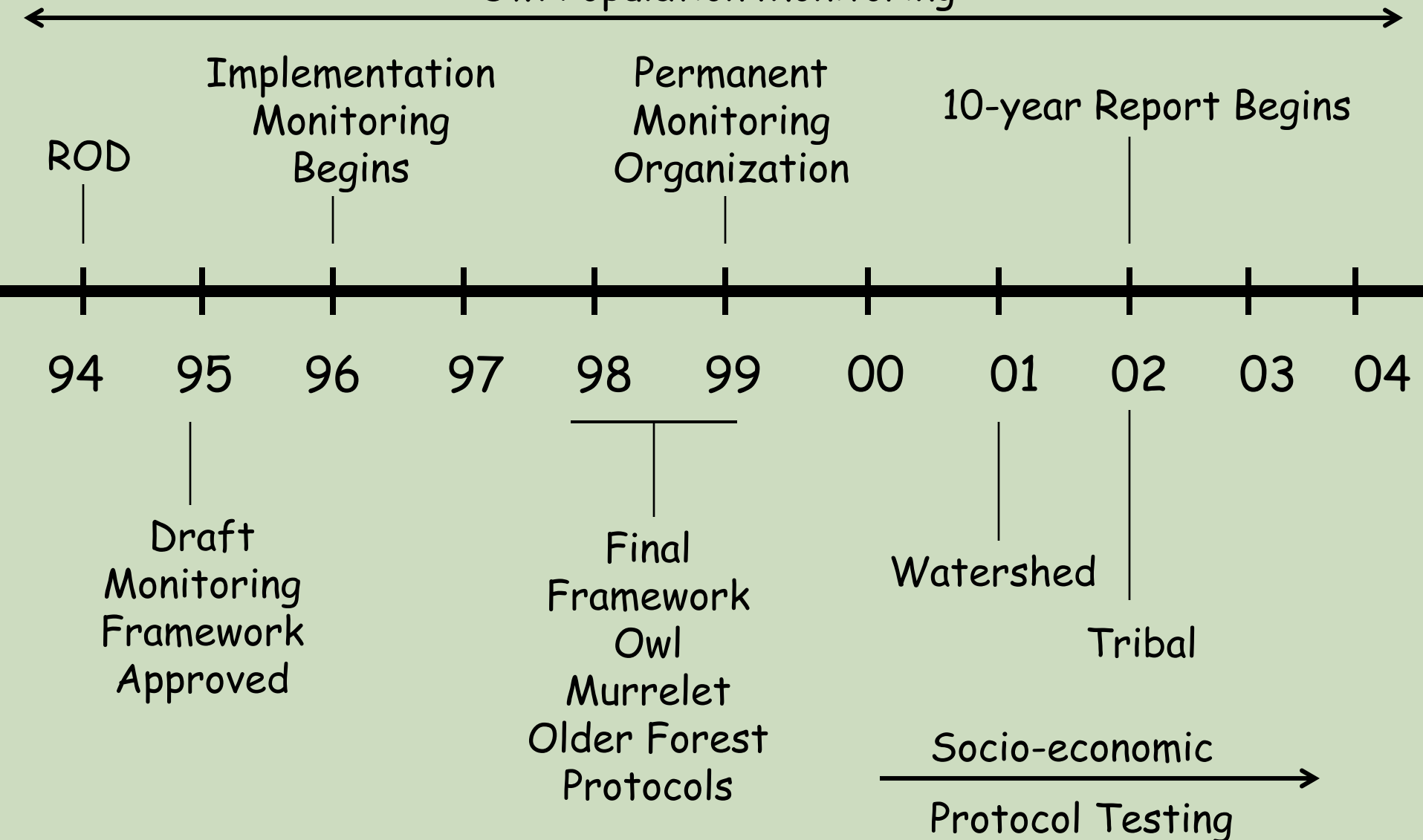
Effectiveness Monitoring Modules

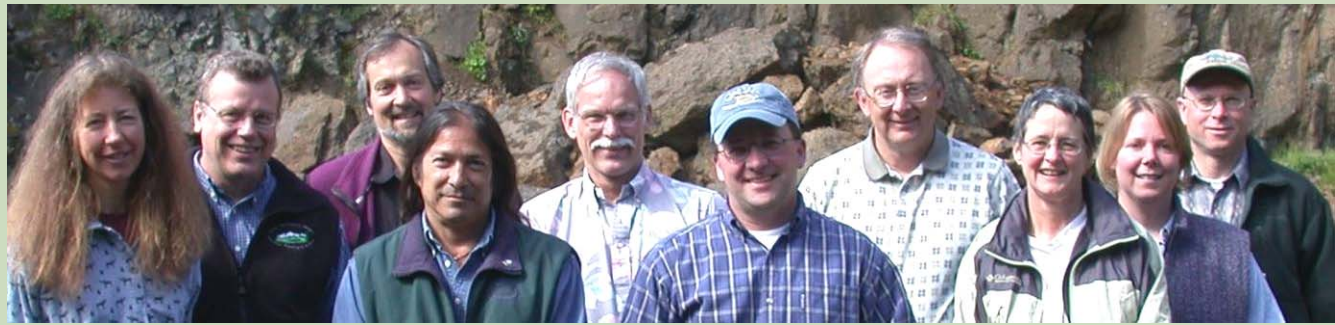
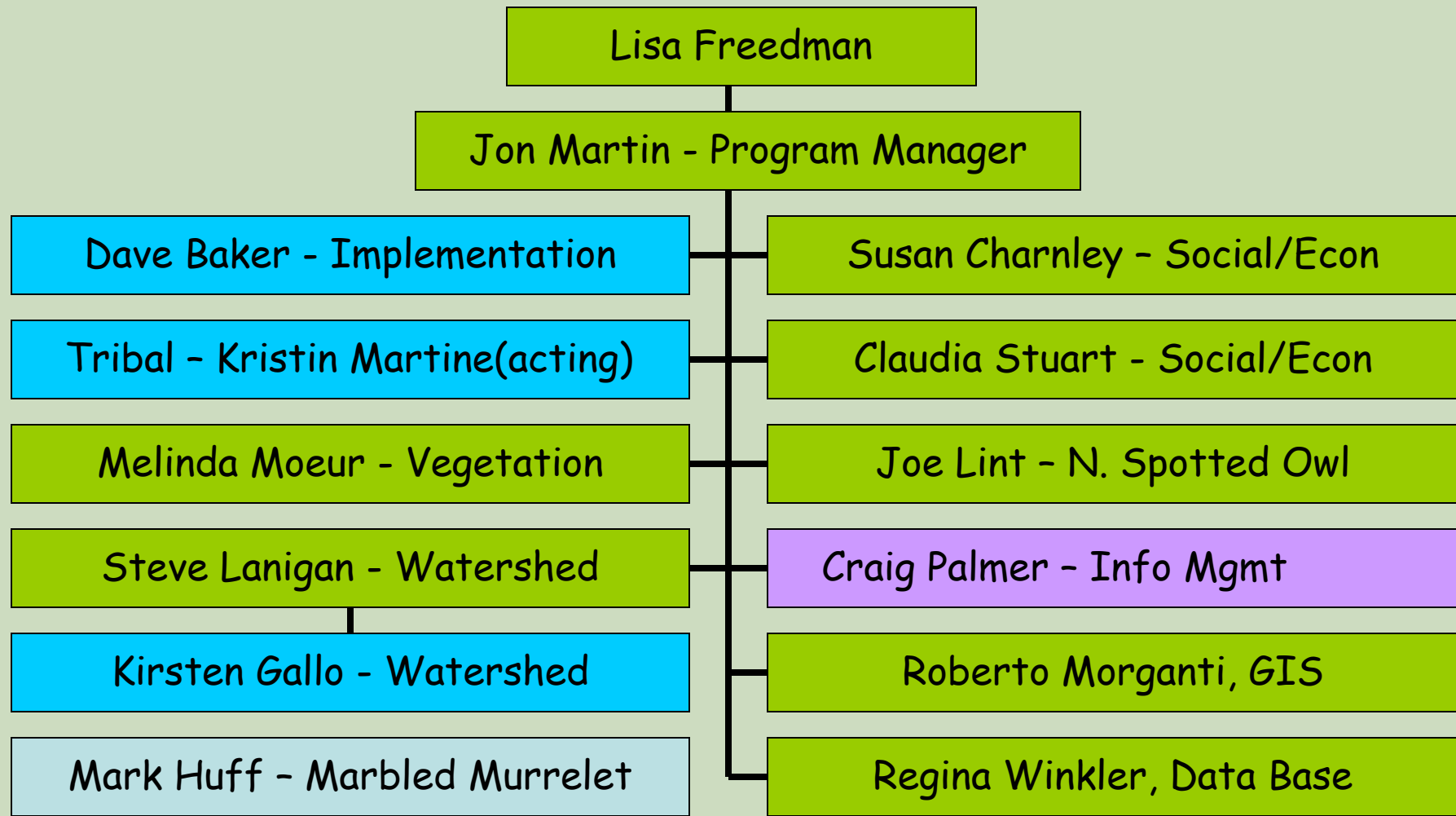
- Northern Spotted Owl
- Marbled Murrelet
- Old Growth
- Watershed Condition
- Socio-Economic
- Tribal
- Biodiversity



NWFP Monitoring Timeline

Owl Population Monitoring





Interagency Regional Monitoring Team

NWFP Interagency Monitoring Budget

1994 - 2005

(X1000)

Agency	TOTAL
Forest Service	\$23,296
Bureau of Land Management	\$11,218
Forest Service - Research	\$7,942
Fish & Wildlife Service	\$3,338
US Geological Survey	\$1,844
National Park Service	\$1,088
NOAA - Fisheries	\$745
Environmental Protection Agency	\$663
TOTAL	\$50,134

NWFP Interagency Monitoring Budget

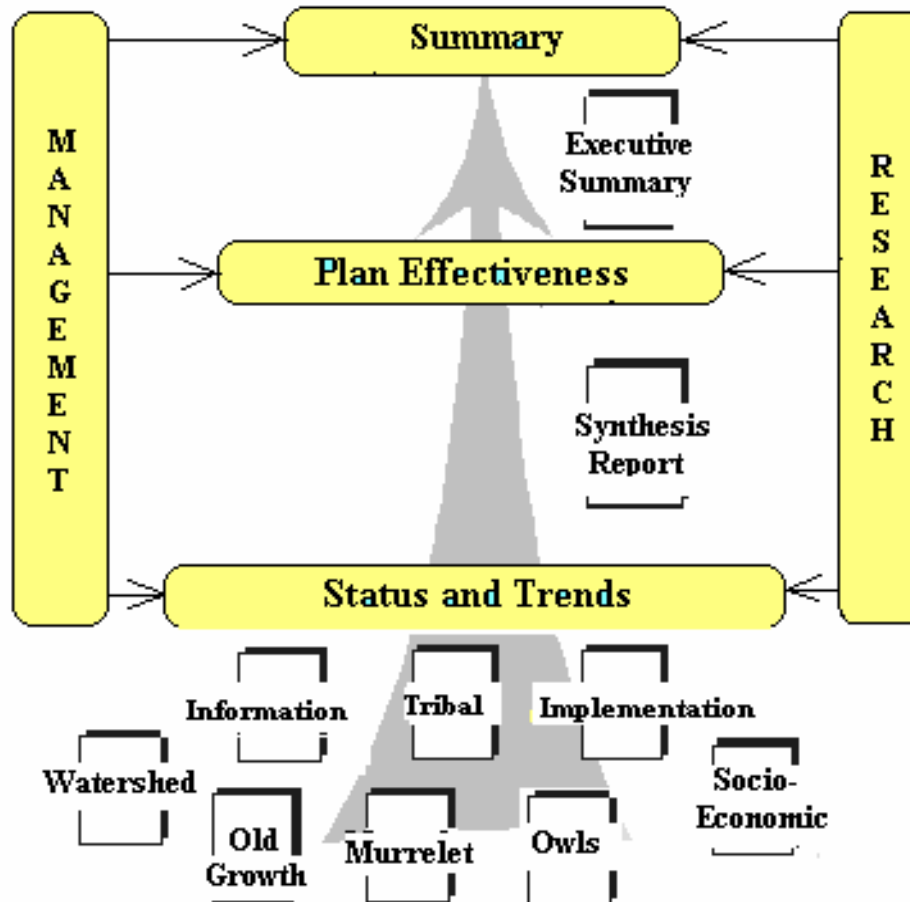
1994 - 2005

(X1000)

Northern Spotted Owls	25,774
Watershed Condition	6,833
Marbled Murrelet	6,789
Older Forests	3,856
Implementation	2,359
Socio-economic	1,560
Biodiversity	364
Tribal Relationships	289
Program Management	2,345
TOTAL	\$50,134

Approach ...

NWFP 10-Year Report



Next steps for monitoring program

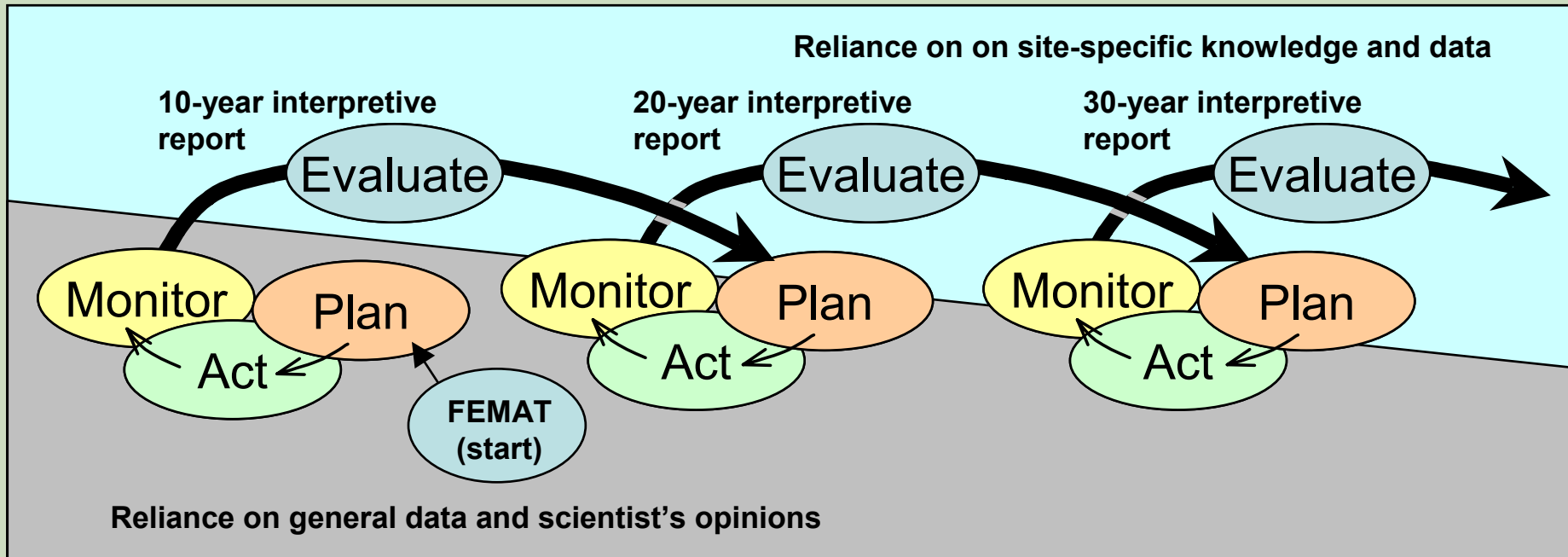
- Revisit questions -- in light of 10-year findings
- Federal budgets continue to decline
- Examine how to connect regional and local monitoring

Finally ...

What have we learned?

Should changes be made?

How and where?



Acknowledgments

Regional Interagency Executive Team

Regional Monitoring Team

> 200 field staff

10-year report

> 60 authors

Early days

Design - Dan McKenzie, EPA & Barry Mulder, FWS

Mike Collopy, Tom Mills, Miles Hemstrom, Joe Lint,
Sarah Madsen, Barry Noon, Craig Palmer, Gordon Reeves.

Implementation - Lisa Freedman, FS ,

Mike Crouse, Dave Powers, Monty Knudson, Nancy Molina.

A photograph of a redwood forest. The scene is dominated by tall, straight, reddish-brown tree trunks that rise vertically from a lush green forest floor. The ground is covered in dense ferns and other undergrowth. A narrow, dirt path winds through the trees, leading the viewer's eye into the distance. The lighting is soft and diffused, creating a misty or ethereal atmosphere. The overall color palette is rich with greens and earthy reds.

Questions?