

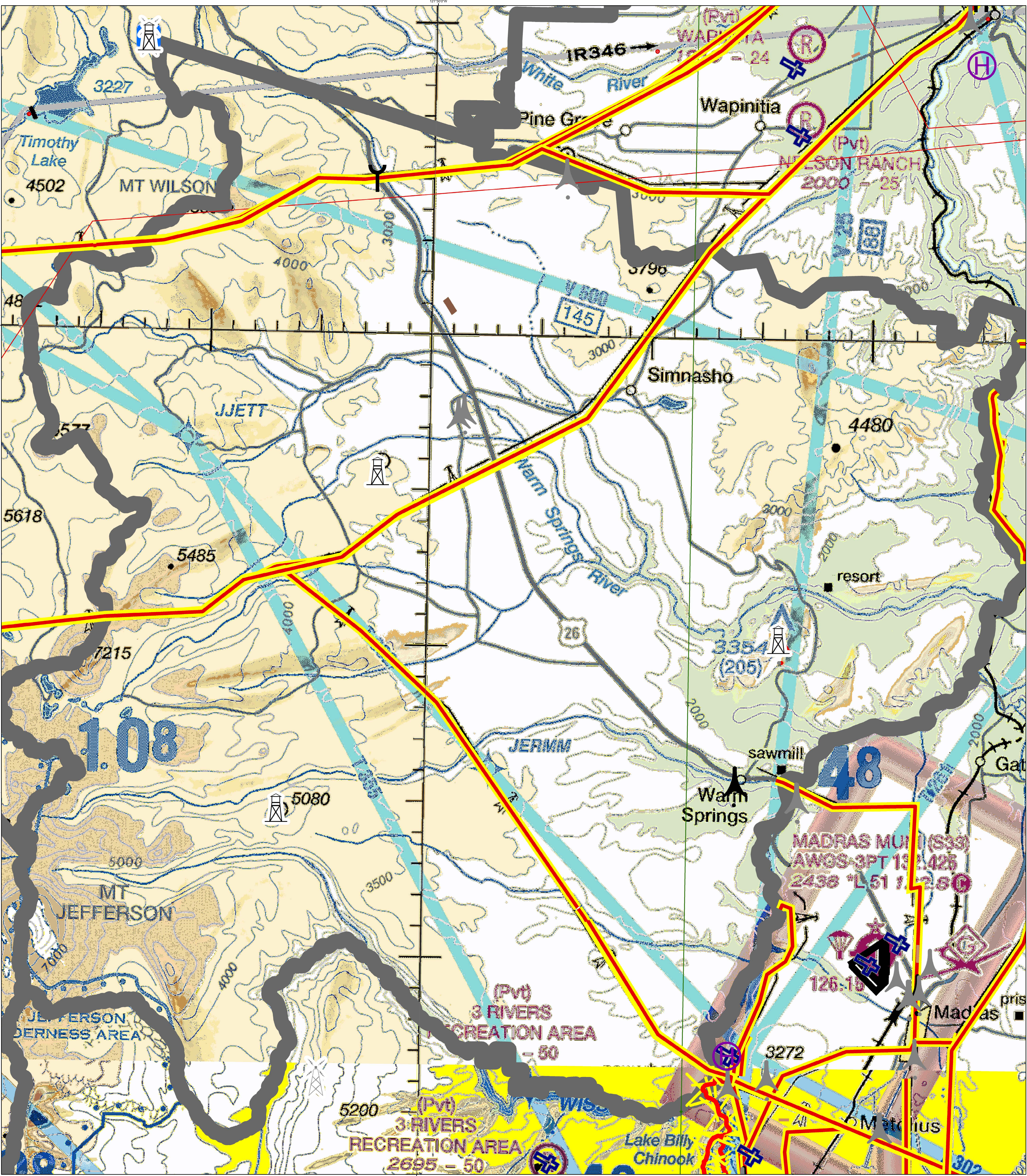
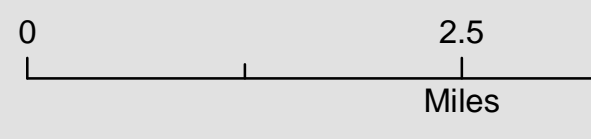
Known Aviation Hazards

Warm Springs Agency Dispatch Center

Revised: 4/29/2022



Map Scale: 1:70,000



<p>AIRPORTS</p> <p>(Airports having Control Towers are shown in Blue, all others in Magenta)</p> <ul style="list-style-type: none"> Other than hand-surfaced runways Hand-surfaced runways 1500 ft. to 8069 ft. in length Hand-surfaced runways 1500 ft. to 8069 ft. in length Open dot within hand-surfaced runway configuration indicates approximate VOR, VOR-DME, or VORTAC location. <p>All recognizable hand-surfaced runways, including those closed, are shown for visual identification. Airports may be public or private.</p> <p>TOPOGRAPHIC INFORMATION</p> <ul style="list-style-type: none"> Power Transmission Line Aerial Cable Lookout Tower Mountain Pass 11623 (Elevation of Pass) 	<p>ADDITIONAL AIRPORT INFORMATION</p> <ul style="list-style-type: none"> Private (Pvt) - Non-public use having emergency or landmark value Military - Other than hand-surfaced: all military airports are identified by abbreviations: AFB, NAS, JAF, etc. DOD users, for complete airport information consult DOD FLIP. Unimproved Abandoned - paved having landmark value. Flight Park 3000 ft. or greater Selected Selected <p>Services - fuel available and field tended during normal working hours depicted by use of ticks around basic airport symbol. (Normal working hours are Mon thru Fri 1000 A.M. to 4:00 P.M. local time.) Consult AFD for service availability at airports with hand-surfaced runways greater than 8069 ft.</p> <p>Rotating airport beacon in operation Sunset to Sunrise</p>	<p>AIRPORT TRAFFIC SERVICE AND AIRSPACE INFORMATION</p> <p>Only the controlled and reserved airspace effective below 18,000 ft. MSL are shown on this chart. All times are local.</p> <ul style="list-style-type: none"> Class B Airspace Class C Airspace (Mode C - See FAR 91.215(A)) Class D Airspace Class E Airspace Class E Airspace with floor 700 ft. above surface Class E Airspace with floor 1200 ft. or greater above surface that abuts Class G Airspace <p>2400 MSL Differentiates floors of Class E Airspace greater than 700 ft. above surface. Class E Airspace exists at 1200' AGL unless otherwise designated as shown above. Class E Airspace low altitude Federal Airways are indicated by center line. Intersection - Arrows are directed towards facilities which establish intersection.</p> <p>Total mileage between NAVAIDs on direct Airways</p> <ul style="list-style-type: none"> Class E Airspace low altitude RNAV Routes are indicated by center line. Military Training Route National Security Area Terminal Radar Service Area (TRSA) Military Training Route 	<p>OBSTRUCTIONS</p> <p>Below 1000 ft. AGL</p> <ul style="list-style-type: none"> Obstruction with high-intensity lights may operate part-time. Elevation of the top above mean sea level - Height above ground - Under construction or reported: position and elevation unverified NOTICE: Guy wires may extend outward from structures. 	<p>MISCELLANEOUS</p> <ul style="list-style-type: none"> Isogonic Line (2010 VALUE) Ultralight Activity Hang Glider Activity Parachute Jumping Area (See Airport/Facility Directory) Marine Light VPXYZ (See Airport/Facility Directory for latitude/longitude) Falcon Avoidance Area (1000 ft. vertical separation) 	<p>LOCALLY IDENTIFIED VERTICAL OBSTRUCTIONS</p> <p>(Towers, lookouts and repeaters of unknown height shown in Black. Towers, lookouts and repeaters < 2000 AGL shown in Gray. All others shown in Red)</p> <ul style="list-style-type: none"> Tower Lookout Repeater Overhead Cables Blasting Area Radio Base Site Radio Avion Site Radio Secondary Base Site Bridges Main Power Lines Wire Hazards Aerial Recreation Areas 	<p>NATIONAL WIND FACILITY HAZARDS (FAA)</p> <ul style="list-style-type: none"> Met Towers < 200 ft AGL Met Towers > 200 ft AGL Windmills of Unknown Height Windmills < 200 ft AGL Windmills > 200 ft AGL Wind Farm < 2000 ft AGL Wind Farm > 2000 ft AGL <p>ADMINISTRATIVE FEATURES</p> <ul style="list-style-type: none"> Guard Stations Dispatch Areas Aerial Refuel Routes AROSAV, AR305BV
--	--	--	--	---	---	--

The USDA Forest Service makes no warranty as to the accuracy, reliability or completeness of these data for individual or aggregate use with other data. Original data were compiled from various sources. This information may not meet National Map Accuracy Standards. This product was developed through digital means and may be updated without notification.

Note: Not all legend items may appear in the map extent.