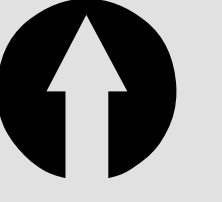


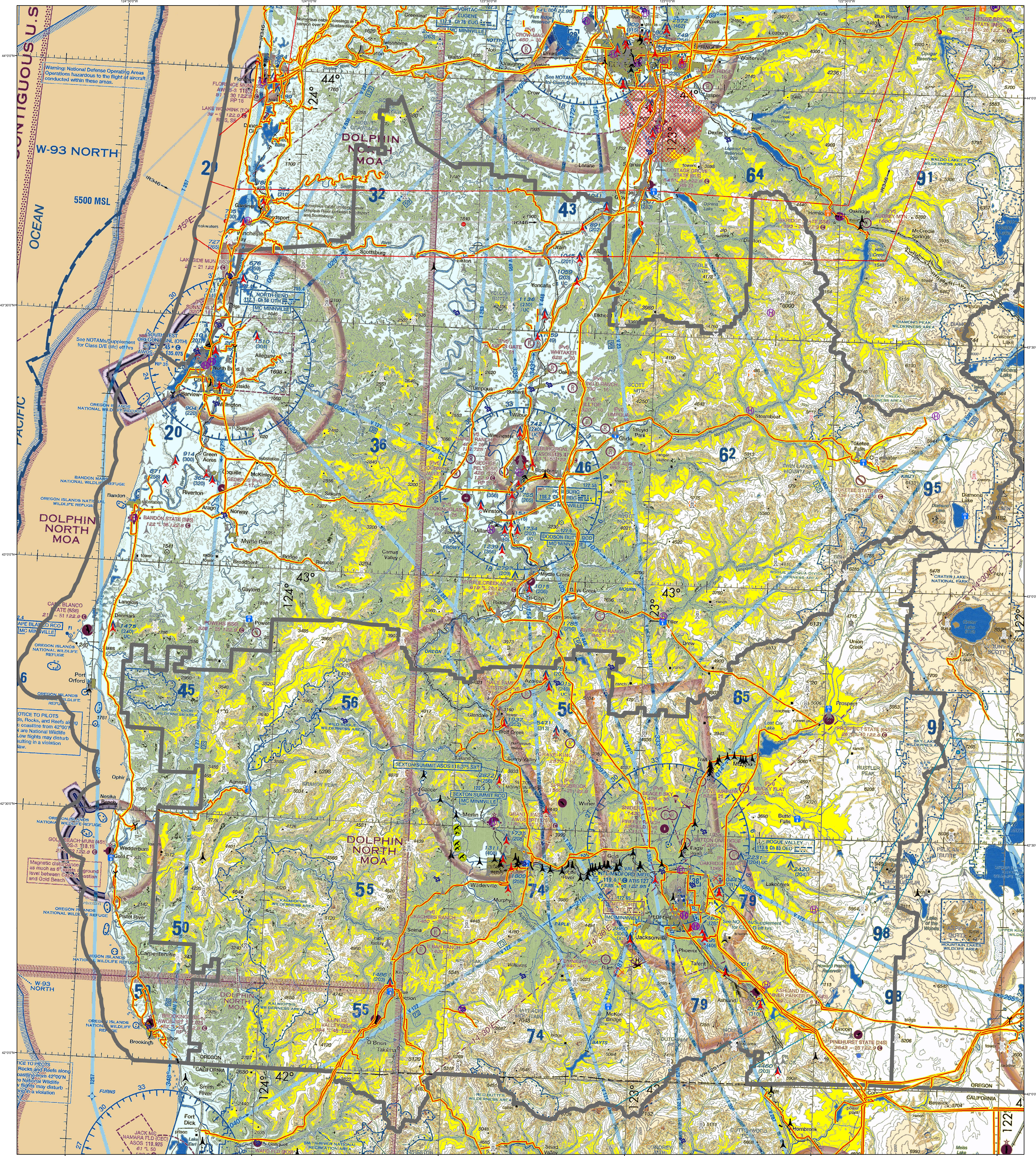
# Known Aviation Hazards

## Roseburg Interagency Coordination Center

Revised: 4/29/2022



Map Scale: 1:258,000  
0 2.5 5  
Miles



<p><b>AIRPORTS</b></p> <p>(Airports having Control Towers are shown in Blue, all others in Magenta)</p> <ul style="list-style-type: none"> <li>Control Tower</li> <li>Other than hard-surfaced Runways</li> <li>Hard-surfaced runways 1500 ft. to 8069 ft. in length</li> <li>Hard-surfaced runways 1500 ft. to 8069 ft. in length</li> <li>Open water hard-surfaced runway configuration indicates approximate VOR, VOR/DME, or VORTAC location.</li> </ul> <p>All recognizable hard-surfaced runways, including those closed, are shown for visual identification. Airports may be public or private.</p> <p><b>TOPOGRAPHIC INFORMATION</b></p> <ul style="list-style-type: none"> <li>Power Transmission Line</li> <li>Local Tower</li> <li>Mountain Pass</li> <li>11623 (Elevation of Pass)</li> </ul>	<p><b>ADDITIONAL AIRPORT INFORMATION</b></p> <ul style="list-style-type: none"> <li>Private (PVT) - Non-public use having emergency or landmark value</li> <li>Military - Other than hard-surfaced; all military airports are identified by abbreviations AFB, NAS, RAF, etc. DOD users, for complete airport information consult DOD FLIP.</li> <li>Helipad</li> <li>Unimproved</li> <li>Abandoned - paved having landmark value. Flight Park 3000 ft. or greater</li> <li>Ultra-light</li> <li>Services - fuel available and field tended during normal working hours depicted by use of ticks around basic airport symbol. (Normal working hours are Mon thru Fri 1000 A.M. to 4:00 P.M. local time.) Consult AFD for service availability at airports with hard-surfaced runways greater than 8069 ft.</li> <li>Rotating airport beacon in operation Sunset to Sunrise</li> </ul>	<p><b>AIRPORT TRAFFIC SERVICE AND AIRSPACE INFORMATION</b></p> <p>Only the controlled and reserved airspace effective below 18,000 ft. MSL are shown on this chart. All times are local.</p> <ul style="list-style-type: none"> <li>Class B Airspace</li> <li>Class C Airspace (Mode C - see FAR 91.215(A))</li> <li>Class D Airspace</li> <li>Class E Airspace in hundreds of feet (Class E airspace values indicate surface up to but not including that value)</li> <li>Class E (fict) Airspace</li> <li>Class E Airspace with floor 700 ft. above surface</li> <li>Class E Airspace with floor 1200 ft. or greater above surface that abuts Class G Airspace</li> <li>Class G Airspace</li> <li>Class G Airspace greater than 100 ft. above surface, otherwise designated as shown above.</li> <li>Class E Airspace low altitude Federal Airways are indicated by center line.</li> <li>Special Airport Traffic Area (See FAR 92.15 for details)</li> <li>ADIZ - Air Defense Identification Zone (See FAR 92.215(A))</li> <li>National Security Area</li> <li>Terminal Radar Service Area (TRSA)</li> <li>MTR - Military Training Route</li> </ul> <p><b>2400 MSL</b> Differentiates floors of Class E Airspace greater than 700 ft. above surface.</p> <p><b>4500 MSL</b> Ceiling of Class D Airspace in hundreds of feet (Class D airspace values indicate surface up to but not including that value).</p> <p><b>1000 ft.</b> Total mileage between NAVAIDS on direct Airways.</p> <p><b>Class E Airspace low altitude RNAV Routes</b> are indicated by center line.</p> <p><b>1319 TR 1319</b> Helicopter Only</p> <p><b>RNAV Waypoint</b></p>	<p><b>OBSTRUCTIONS</b></p> <p>1000 ft. and higher AGL</p> <p>Below 1000 ft. AGL</p> <p>Group Obstruction</p> <p>Obstruction with high-intensity lights may operate part-time.</p> <p>Elevation of the top above mean sea level - Height above ground - Under construction or reported position and elevated unobstructed.</p> <p><b>NOTICE:</b> Guy wires may extend outward from structures.</p> <p><b>MISCELLANEOUS</b></p> <ul style="list-style-type: none"> <li>Isogonic Line (2010 VALUE)</li> <li>Ultralight Activity</li> <li>Hang Glider Activity</li> <li>Glider Operations</li> <li>Unmanned Aircraft Activity</li> <li>Parachute Jumping Area (See Airport/Facility Directory)</li> <li>Marine Light</li> <li>VPXYZ (See Airport/Facility Directory for latitude/longitude)</li> <li>Falcon Avoidance Area (1000 ft. vertical separation)</li> </ul>	<p><b>LOCALLY IDENTIFIED VERTICAL OBSTRUCTIONS</b></p> <p>(Tower, lookouts and markers of obstructions height shown in Black. Towers, lookouts and markers &lt; 200ft AGL shown in gray. All others shown in Red)</p> <ul style="list-style-type: none"> <li>Tower</li> <li>Lookout</li> <li>Repeat</li> <li>Overhead Cables</li> <li>Retardant Jetison Areas</li> <li>Hang Glider Sites</li> <li>Glider Operation Area</li> <li>Ballooning/Paraglider Sites</li> <li>Rocket Launch Sites</li> <li>Military Training Routes</li> <li>Visual Route Leg Identifier</li> <li>Visual Route Outer Boundary</li> <li>Instrument Route Leg Identifier</li> <li>Instrument Route Outer Boundary</li> <li>Slow Route Leg Identifier</li> <li>Slow Route Line</li> </ul>	<p><b>NATIONAL WIND FACILITY HAZARDS (FAA)</b></p> <ul style="list-style-type: none"> <li>Met Towers &gt; 200 ft AGL</li> <li>Met Towers &gt; 200 ft AGL</li> <li>Windmills of Unknown Height</li> <li>Windmills &lt; 200 ft AGL</li> <li>Windmills &gt; 200 ft AGL</li> <li>Wind Farm &gt; 200ft AGL</li> </ul> <p><b>ADMINISTRATIVE FEATURES</b></p> <ul style="list-style-type: none"> <li>Guard Stations</li> <li>Dispatch Areas</li> <li>Aerial Refuel Routes</li> <li>AR05AV, AR305BV</li> </ul>	<p><b>The USDA Forest Service makes no warranty as to the accuracy, reliability or completeness of these data for individual or aggregate use with other data. Original data were compiled from various sources. This information may not meet National Map Accuracy Standards. This product was developed through digital means and may be updated without notification.</b></p> <p>Note: Not all legend items may appear in the map extent.</p>
--	---	--	--	--	--	---