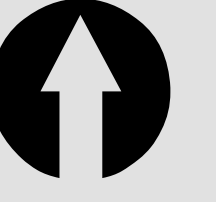


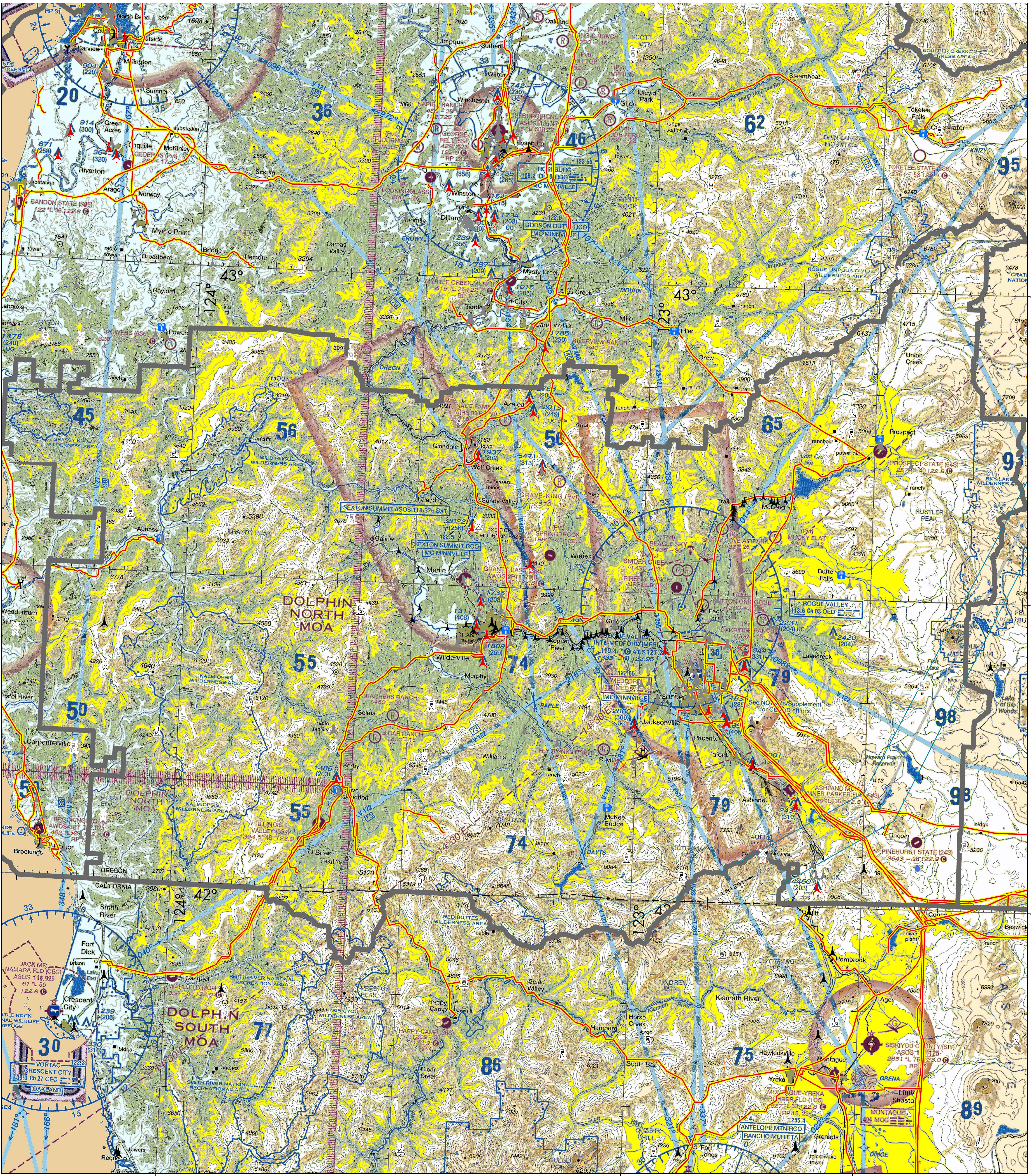
Known Aviation Hazards

Rogue Valley Interagency Communication Center

Revised: 5/10/2022



Map Scale: 1:212,000
0 2.5 5
Miles



AIRPORTS (Airports having Control Towers are shown in Blue, all others in Magenta) Other than hand-surfaced runways Hand-surfaced runways 1500 ft. to 8069 ft. in length Hand-surfaced runways 1500 ft. to 8069 ft. in length Open dot within hand-surfaced runway Configuration indicates approximate VOR, VOR-DME, or VORTAC location. All recognizable hand-surfaced runways, including those closed, are shown for visual identification. Airports may be public or private.	ADDITIONAL AIRPORT INFORMATION Private (PVT) - Non-public use having emergency or landmark value Military - Other than hand-surfaced: all military airports are identified by abbreviations: IAS, IAS, IAS, etc. DOD users, for complete airport information consult DOD FLIP. Heliport Unimproved Abandoned - paved Ultra-light Having landmark value Flight Park 3000 ft. or greater Normal Services - fuel available and field tended during normal working hours depicted by use of ticks around basic airport symbol. (Normal working hours are Mon thru Fri 10:00 A.M. to 4:00 P.M. local time.) Consent AFD for service availability at airports with hand-surfaced runways greater than 8069 ft. Rotating airport beacon in operation Sunset to Sunrise	AIRPORT TRAFFIC SERVICE AND AIRSPACE INFORMATION Only the controlled and reserved airspace effective below 18,000 ft. MSL are shown on this chart. All times are local. Class B Airspace Class C Airspace (Mode C - see FAR 91.215(A)) Class D Airspace Class E Airspace Class E Airspace with floor 700 ft. above surface Class E Airspace with floor 1200 ft. or greater above surface that abuts Class G Airspace Class E Airspace greater than 700 ft. above surface, otherwise designated as shown above. Class E Airspace low altitude Federal Airways are indicated by center line. Class E Airspace are directed towards facilities which establish intersection. Class E Airspace (see FAR 91.215(A)) Class E Airspace with floor 700 ft. above surface Class E Airspace with floor 1200 ft. or greater above surface that abuts Class G Airspace National Security Area Terminal Radar Service Area (TRSA) MTR - Military Training Route	OBSTRUCTIONS 1000 ft. and higher AGL Below 1000 ft. AGL Obstruction with high-intensity lights may operate part-time. Elevation of the top above mean sea level - Height above ground - Under construction or reported position and elevation unconfirmed NOTICE: Guy wires may extend outward from structures. Total mileage between NAVAIDs on direct Airways Class E Airspace low altitude RNAV Routes are indicated by center line. RNAV Waypoint Prohibited, Restricted, and Warning Areas Convoy Airway, Danger, and Restricted Areas Alert Area and MDA Military Operations Area Special Airport Traffic Area (See FAR 91.215(A)) ADIZ - Air Defense Identification Zone (See FAR 91.215(A)) National Security Area Terminal Radar Service Area (TRSA) MTR - Military Training Route	MISCELLANEOUS Isogonic Line (2010 VALUE) Ultra-light Hang Glider Activity Glider Operations Unmanned Aircraft Activity Parachute Jumping Area (See Airport/Facility Directory for latitude/longitude) Marine Light VPXYZ Base Airport/Facility Directory for latitude/longitude) Falcon Avoidance Area (1000 ft. vertical separation)	LOCALLY IDENTIFIED VERTICAL OBSTRUCTIONS (These towers and obstacles of unusual height shown in Black. Towers, lookouts and repeaters < 200ft AGL shown in Gray. All others shown in Red) Tower Lookout Repeater Overhead Cables Blasting Area Radio Base Site Radio Avionics Site Radio Secondary Base Site Bridges Main Power Lines Wire Hazards Aerial Recreation Areas Retardant Jetison Areas Hang Glider Sites Glider Operation Area Ballooning/Paraglider Sites Rocket Launch Sites Military Training Routes Visual Route Leg Identifier Visual Route Outer Boundary Instrument Route Leg Identifier Instrument Route Outer Boundary Slow Route Leg Identifier Slow Route Outer Boundary Slow Route Line	NATIONAL WIND FACILITY HAZARDS (FAA) Met Towers < 200 ft AGL Met Towers > 200 ft AGL Windmills of Unknown Height Windmills < 200 ft AGL Windmills > 200 ft AGL Wind Farm < 200ft AGL Wind Farm > 200ft AGL ADMINISTRATIVE FEATURES Guard Stations Dispatch Areas Aerial Refuel Routes ARJOSAV, AR305BV
--	---	---	---	--	--	--

The USDA Forest Service makes no warranty as to the accuracy, reliability or completeness of these data for individual or aggregate use with other data. Original data were compiled from various sources. This information may not meet National Map Accuracy Standards. This product was developed through digital means and may be updated without notification.

Note: Not all legend items may appear in the map extent.