

Known Aviation Hazards

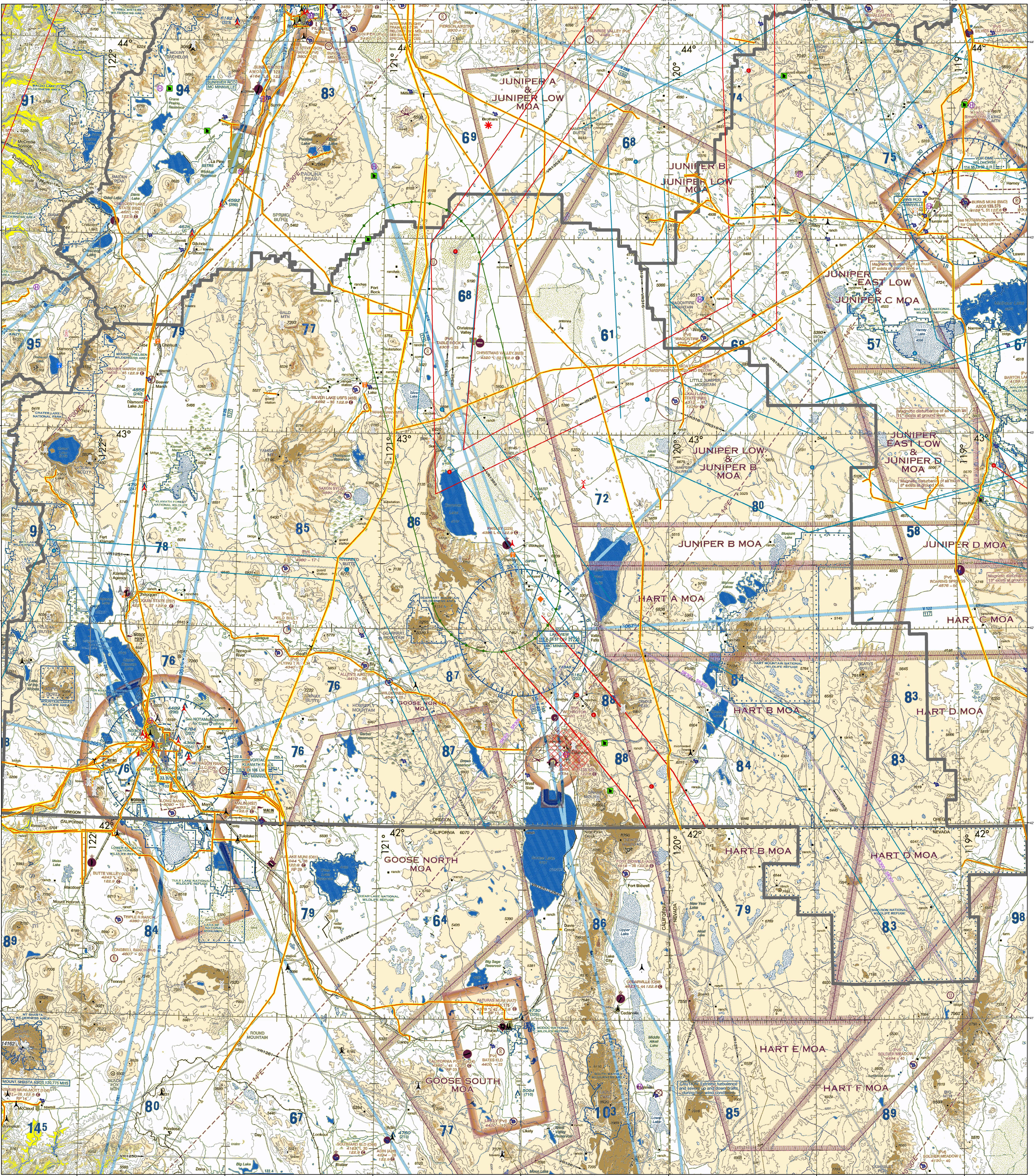
Lakeview Interagency Fire Center

Revised: 4/29/2022



Map Scale: 1:335,000

0 2.5 5
Miles



AIRPORTS Airports having Control Towers are shown in Blue, at other Magenta. Other than hand-surfaced runways Hand-surfaced runways 1500 ft. to 8069 ft. in length Hand-surfaced runways 1500 ft. to 8069 ft. in length Open dot within hand-surfaced runway configuration indicates approximate VOR, VOR-DME, or VORTAC location. All recognizable hand-surfaced runways, including those closed, are shown for visual identification. Airports may be public or private.	ADDITIONAL AIRPORT INFORMATION Private (PVT) - Non-public use having emergency or landmark value Military - Other than hand-surfaced; all military airports are identified by abbreviations AFB, NAS, RAF, etc. DOD users, for complete airport information consult DOD FLIP. Unimproved Abandoned - paved Ultra-light Configuration indicates approximate VOR, VOR-DME, or VORTAC location. Services - fuel available and field tended during normal working hours depicted by use of ticks around basic airport symbol. (Normal working hours are Mon thru Fri 1000 A.M. to 4:00 P.M. local time.) Consult AFD for service availability at airports with hand-surfaced runways greater than 8069 ft. Rising airport beacon in operation Sunset to Sunrise	AIRPORT TRAFFIC SERVICE AND AIRSPACE INFORMATION Only the controlled and reserved airspace effective below 18,000 ft. MSL are shown on this chart. All times are local. Class B Airspace Class C Airspace (Mode C-seq FAR 91.215(A)) Class D Airspace Ceiling of Class D Airspace in hundreds of feet (Class E airspace ceiling values indicates surface up to but not including that value) Class E (to) Airspace Class E Airspace with floor 700 ft. above surface Class E Airspace with floor 1200 ft. or greater above surface that abuts Class G Airspace 2400 MSL Differentiates floors of Class E Airspace greater than 700 ft. above surface, otherwise designated as shown above. Class E Airspace low altitude Federal Airways are indicated by center line. Intersections - Arrows are directed towards facilities which establish intersection. Total miles between NAVAIDS on direct Airways Class E Airspace low altitude RNAV Routes are indicated by center line. RNAV Waypoint MTR - Military Training Route	OBSTRUCTIONS Below 1000 ft. AGL 1000 ft. and higher AGL Group Obstruction Elevation of the top above mean sea level - Height above ground - Under construction or reported position and elevation unverified NOTICE: Guy wires may extend outward from structures.	MISCELLANEOUS Isogonic Line (2010 VALUE) Ultra-light Activity Hang Glider Activity Glider Operations Unmanned Aircraft Activity Parachute Jumping Area (See Airport/Facility Directory) Marine Light VPXYZ (See Airport/Facility Directory for latitude/longitude) Falcon Avoidance Area (1000 ft. vertical separation)	LOCALLY IDENTIFIED VERTICAL OBSTRUCTIONS (Towers, lookouts and masts of known height shown in Black; Towers, lookouts and masts of unknown height shown in gray; All others shown in Red) Tower Lookout Repeater Overhead Cables Retardant Jetison Areas Hang Glider Activity Glider Operation Area Ballooning/Paraglider Sites Rocket Launch Sites Military Training Routes Visual Route Leg Identifier Visual Route Outer Boundary Instrument Route Leg Identifier Instrument Route Outer Boundary Slow Route Leg Identifier Slow Route Outer Boundary Slow Route Line Aerial Recreation Areas	NATIONAL WIND FACILITY HAZARDS (FAA) Met Towers > 200 ft AGL Met Towers > 200 ft AGL Windmills of Unknown Height Windmills < 200 ft AGL Windmills > 200 ft AGL Wind Farm < 200ft AGL Wind Farm > 200ft AGL ADMINISTRATIVE FEATURES Guard Stations Dispatch Areas Aerial Refuel Routes ARJOSAV, AR305BV
---	---	---	--	---	--	--

The USDA Forest Service makes no warranty as to the accuracy, reliability or completeness of these data for individual or aggregate use with other data. Original data were compiled from various sources. This information may not meet National Map Accuracy Standards. This product was developed through digital means and may be updated without notification.

Note: Not all legend items may appear in the map extent.