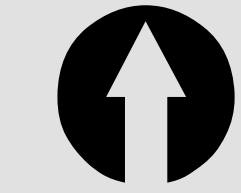
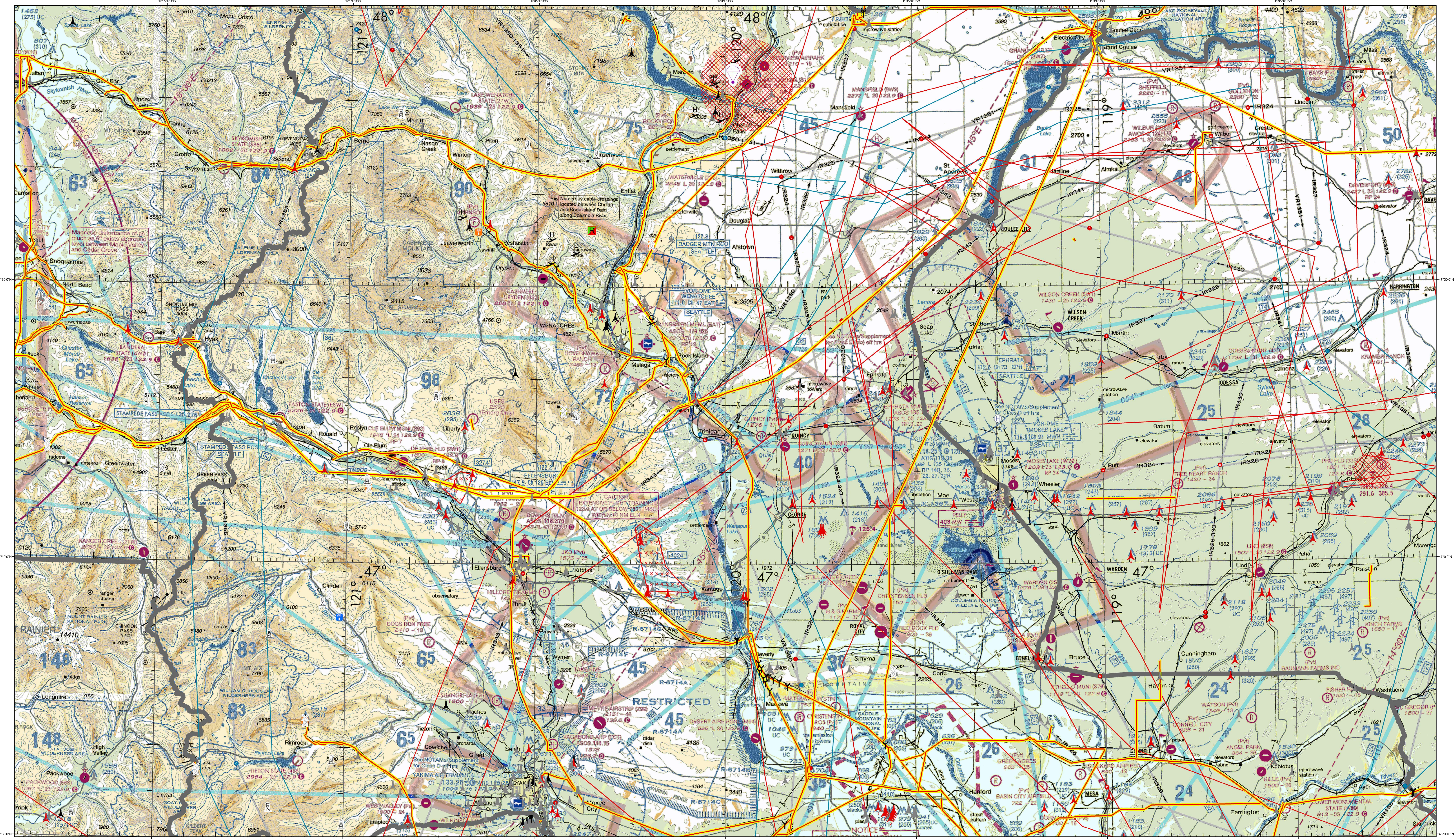
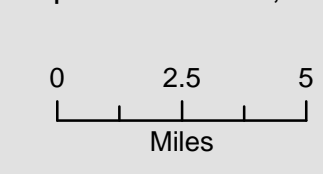


# Known Aviation Hazards Central CWICC Ops Map

Revised: 4/28/2022



Map Scale: 1:244,000



<p><b>AIRPORTS</b></p> <p>(Airports having Control Towers are shown in Blue, all others Magenta)</p> <ul style="list-style-type: none"> <li>Other than hand-surfaced runways</li> <li>Hand-surfaced runways 1500 ft. to 8069 ft. in length</li> <li>Hand-surfaced runways 1500 ft. to 8069 ft. in length</li> <li>Open dot within hand-surfaced runway configuration indicates approximate VOR, VOR-DME, or VORTAC location.</li> </ul> <p>All recognizable hand-surfaced runways, including those closed, are shown for visual identification. Airports may be public or private.</p> <p><b>TOPOGRAPHIC INFORMATION</b></p> <ul style="list-style-type: none"> <li>Local Tower</li> <li>618 (Elevation Base of Tower)</li> <li>Mountain Pass</li> <li>1123 (Elevation of Pass)</li> </ul>	<p><b>ADDITIONAL AIRPORT INFORMATION</b></p> <ul style="list-style-type: none"> <li>Private (Pvt) - Non-public use having emergency or landmark value</li> <li>Military - Other than hand-surfaced, all military airports are identified by abbreviations AFB, MAF, IAF, etc. DOD users, for complete airport information consult DOD FLIP</li> <li>Helipad</li> <li>Unimproved</li> <li>Abandoned</li> <li>Unimproved paved</li> <li>Selected</li> <li>3000 ft. or greater</li> <li>Selected</li> <li>Services - fuel available and field tended during normal working hours depicted by use of ticks around base airport symbol. (Normal working hours are Mon thru Fri 1000 A.M. to 4:00 P.M. local time.) Consult AFD for service availability at airports with hand-surfaced runways greater than 8069 ft.</li> <li>Rotating airport beacon in operation Sunset to Sunrise</li> </ul>	<p><b>AIRPORT TRAFFIC SERVICE AND AIRSPACE INFORMATION</b></p> <p>Only the controlled and reserved airspace effective below 18,000 ft. MSL, as shown on this chart. All times are local.</p> <ul style="list-style-type: none"> <li>Class B Airspace</li> <li>Class C Airspace (Mode C - see FAR 91.215(A))</li> <li>Class D Airspace</li> <li>Ceiling of Class D Airspace in hundreds of feet (A minus ceiling value indicates surface up to but not including that value)</li> <li>Class E Airspace</li> <li>Class E Airspace with floor 700 ft. above surface</li> <li>Class E Airspace with floor 1200 ft. or greater above surface that meets Class G Airspace</li> </ul> <p>2400 MSL Differentiates floors of Class E Airspace greater than 700 ft. above surface, otherwise designated as shown above.</p> <p>Class E Airspace low altitude Federal Airways are indicated by center line.</p> <p>ADIZ - Air Defense Identification Zone (See FAR 92.215(A))</p> <p>National Security Area (See Airport/Facility Directory for Interdictions)</p> <p>MTR - Military Training Route</p> <p>Class E Airspace low altitude RNAV Routes are indicated by center line.</p> <p>RNAV Waypoint</p>	<p><b>OBSTRUCTIONS</b></p> <p>1000 ft. and higher AGL</p> <p>Below 1000 ft. AGL</p> <ul style="list-style-type: none"> <li>Obstruction with high-intensity lights, may operate part-time</li> <li>Elevation of the top above mean sea level</li> <li>Height above ground - Under construction or reported position or elevation unverified</li> <li>NOTICE: Guy wires may extend outward from structures.</li> </ul>	<p><b>MISCELLANEOUS</b></p> <ul style="list-style-type: none"> <li>Isogonic Line (2010 VALUE)</li> <li>Unlighted Activity</li> <li>Hang Glider Activity</li> <li>Unmanned Aircraft Activity</li> <li>Parachute Jumping Area (See Airport/Facility Directory)</li> <li>Marine Light</li> <li>VPXYZ (VPXYZ) VFR Waypoints (See Airport/Facility Directory for Interdictions)</li> <li>Falcon Avoidance Area (1000 ft. Vertical separation)</li> </ul>	<p><b>LOCALLY IDENTIFIED VERTICAL OBSTRUCTIONS</b></p> <p>(Down, lookouts and repeaters of unknown height shown in Black; Towers, lookouts and repeaters &gt; 2000 AGL shown in Gray; All others shown in Blue)</p> <ul style="list-style-type: none"> <li>Tower</li> <li>Lookout</li> <li>Repeater</li> <li>Overhead Cables</li> <li>Blasting Area</li> <li>Radio Base Site</li> <li>Radio Avionics Site</li> <li>Radio Secondary Base Site (TRSA)</li> <li>Main Power Lines</li> <li>Slow Route Outer Boundary</li> <li>Slow Route Line</li> <li>Retarded Jetson Areas</li> <li>Hang Glider Sites</li> <li>Glider Operations Area</li> <li>Ballooning/Paraglider Sites</li> <li>Rocket Launch Sites</li> <li>Military Training Routes</li> <li>Visual Route Leg Identifier</li> <li>Instrument Route Leg Identifier</li> <li>Slow Route Leg Identifier</li> <li>Slow Route Outer Boundary</li> <li>Slow Route Line</li> </ul>	<p><b>NATIONAL WIND FACILITY FEATURES (FAA)</b></p> <ul style="list-style-type: none"> <li>Met Towers &lt; 200 ft AGL</li> <li>Met Towers &gt; 200 ft AGL</li> <li>Windmills of Unknown Height</li> <li>Windmills &lt; 200 ft AGL</li> <li>Windmills &gt; 200 ft AGL</li> <li>Wind Farm &lt; 200ft AGL</li> <li>Wind Farm &gt; 200ft AGL</li> </ul> <p><b>ADMINISTRATIVE FEATURES</b></p> <ul style="list-style-type: none"> <li>Guard Stations</li> <li>Dispatch Areas</li> <li>Aerial Refuel Routes</li> <li>AR350V, AR308V</li> </ul>	<p>The USDA Forest Service makes no warranty as to the accuracy, reliability or completeness of these data for individual or aggregate use with other data. Original data were compiled from various sources. This information may not meet National Map Accuracy Standards. This product was developed through digital means and may be updated without notification.</p> <p>Note: Not all legend items may appear in the map extent.</p>
--	--	--	--	---	---	--	--