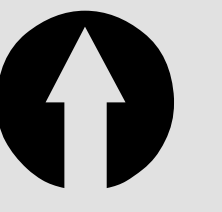


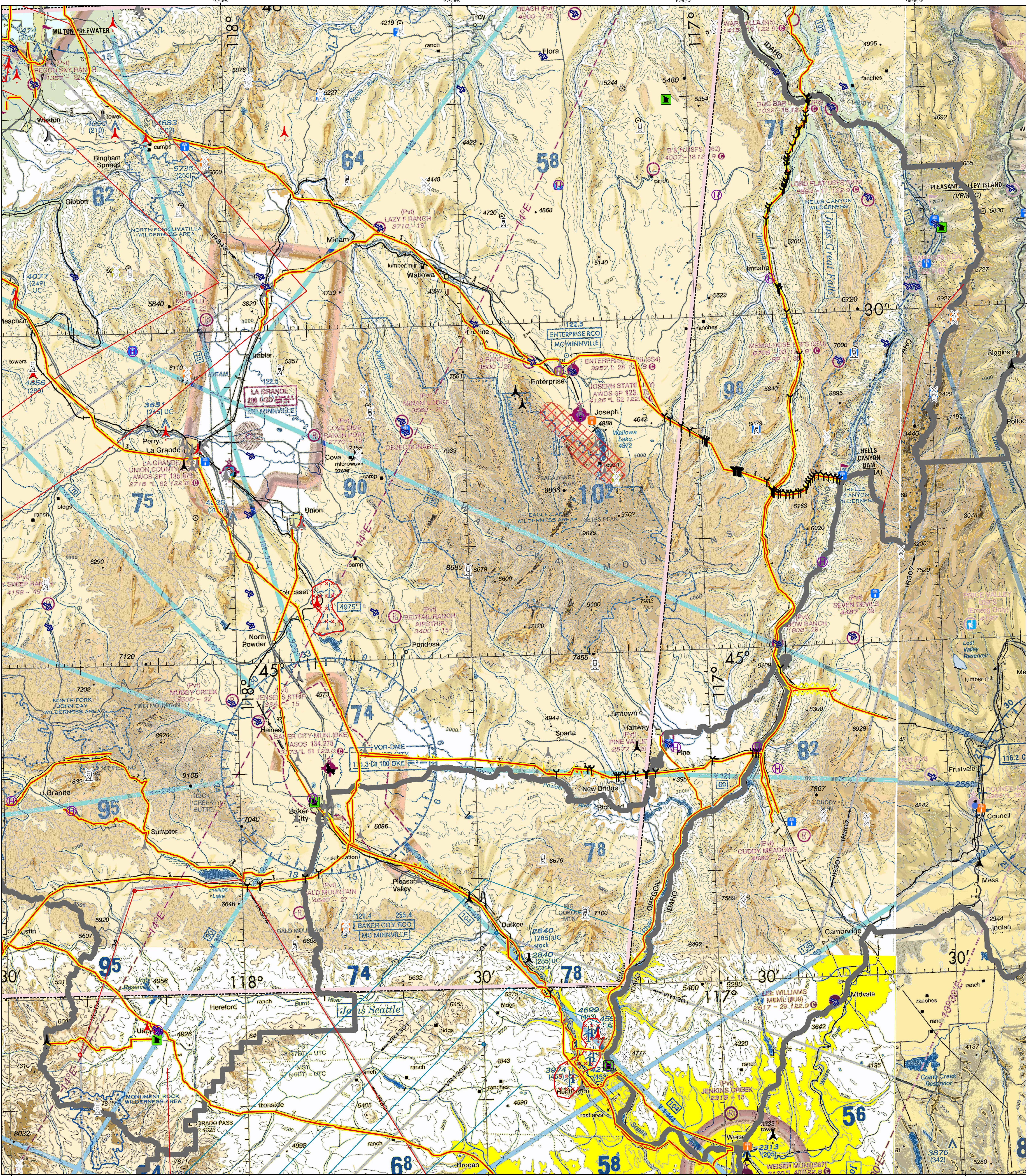
Known Aviation Hazards

Blue Mountain Interagency Comm Center WWF

Revised: 5/2/2022



Map Scale: 1:197,000
0 2.5 5
Miles



| | | | | | |
|---|--|--|---|--|---|
| <p>AIRPORTS</p> <p>(Airports having Control Towers are shown in Blue, at others Magenta)</p> <ul style="list-style-type: none"> Other than hand-surfaced Runways Hand-surfaced runways 1500 ft. to 8069 ft. in length Hand-surfaced runways 1500 ft. to 8069 ft. in length Open dot within hand-surfaced runway configuration indicates approximate VOR, VOR-DME, or VORTAC location. <p>All recognizable hand-surfaced runways, including those closed, are shown for visual identification. Airports may be public or private.</p> <p>TOPOGRAPHIC INFORMATION</p> <ul style="list-style-type: none"> Power Transmission Line Aerial Cable Local Tower Elevation (Base of Tower) Mountain Pass Elevation (of Pass) | <p>ADDITIONAL AIRPORT INFORMATION</p> <ul style="list-style-type: none"> Private (Pvt) - Non-public use having emergency or landmark value Military - Other than hand-surfaced; all military airports are identified by abbreviations: MAF, MAF, etc. DOD users, for complete airport information consult DOD PLP. Unimproved Abandoned Paraded Ultraflight having landmark value Fight Park 3000 ft. or greater Selected <p>Services - fuel available and field tended during normal working hours depicted by use of ticks around basic airport symbol. (Normal working hours are Mon thru Fri 10:00 A.M. to 4:00 P.M. local time.)</p> <p>Consolidated AFD for service availability at airports with hand-surfaced runways greater than 8069 ft.</p> <p>Rotating airport beacon in operation Sunset to Sunrise</p> | <p>AIRPORT TRAFFIC SERVICE AND AIRSPACE INFORMATION</p> <p>Only the controlled and reserved airspace effective below 18,000 ft. MSL are shown on this chart. All times are local.</p> <ul style="list-style-type: none"> Class B Airspace Class C Airspace (Mode C - see FAR 91.151(A)) Class D Airspace Ceiling of Class D Airspace in hundreds of feet (A minus ceiling value indicates surface up to but not including that value) Class E (no) Airspace Class E Airspace with floor 700 ft. above surface Class E Airspace with floor 1200 ft. or greater above surface that abuts Class G Airspace Pendleton UAS Range <p>2400 MSL Differentiates floors of Class E Airspace greater than 700 ft. above surface.</p> <p>4500 MSL Class E Airspace exists at 1200' AGL unless otherwise designated as shown above.</p> <p>Class E Airspace low altitude Federal Airways are indicated by center line.</p> <p>Intersection Arrows are directed towards facilities which establish intersection.</p> <p>ADIZ - Air Defense Identification Zone (see FAR 92.215(A))</p> <p>Military Training Area (MTR)</p> <p>Terminal Radar Service Area (TRSA)</p> <p>Military Training Route</p> <p>Total mileage between NAVD83 on direct Airways</p> <p>Class E Airspace low altitude RNAV Routes are indicated by center line.</p> <p>1319 TK 919 Helicopter Only RNAV Waypoint</p> | <p>OBSTRUCTIONS</p> <ul style="list-style-type: none"> Below 1000 ft. and higher AGL 1000 ft. and higher AGL Group Observation Obstruction with high-intensity lights may operate part-time. Elevation of the top above mean sea level Height above ground Under construction or reported position and elevation unverified NOTICE: Guy wires may extend outward from structures. <p>MISCELLANEOUS</p> <ul style="list-style-type: none"> Isogonic Line (2010 VALUE) Ultraflight Hang Glider Activity Glider Operations Unmanned Aircraft Activity Parachute Jumping Area (See Airport/Facility Directory) Marine Light VPXYZ (See Airport/Facility Directory for latitude/longitude) Falcon Avoidance Area (1000 ft. vertical separation) | <p>LOCALLY IDENTIFIED VERTICAL OBSTRUCTIONS</p> <p>(Towers, lookouts and repeaters of unknown height shown in Black; Towers, lookouts and repeaters < 200ft AGL shown in Gray; All others shown in Red)</p> <ul style="list-style-type: none"> Tower Lookout Repeater Overhead Cables Radio Tower Radio Station Site Radio Secondary Base Sites Pendleton UAS Range Bridges Main Power Lines Wire Hazards Aerial Recreation Areas <p>Military Training Routes</p> <ul style="list-style-type: none"> Visual Route Leg Identifier Visual Route Outer Boundary Instrument Route Leg Identifier Instrument Route Outer Boundary Slow Route Leg Identifier Slow Route Outer Boundary Slow Route Line | <p>NATIONAL WIND FACILITY HAZARDS (FAA)</p> <ul style="list-style-type: none"> Met Towers < 200 ft AGL Met Towers > 200 ft AGL Windmills of Unknown Height Windmills < 200 ft AGL Windmills > 200 ft AGL Wind Farm < 200ft AGL Wind Farm > 200ft AGL <p>ADMINISTRATIVE FEATURES</p> <ul style="list-style-type: none"> Guard Stations Dispatch Areas Aerial Refuel Routes ARCSAV, ARCSBV |
|---|--|--|---|--|---|

The USDA Forest Service makes no warranty as to the accuracy, reliability or completeness of these data for individual or aggregate use with other data. Original data were compiled from various sources. This information may not meet National Map Accuracy Standards. This product was developed through digital means and may be updated without notification.

Note: Not all legend items may appear in the map extent.