

INFORMATION SOURCES

North Kaibab RD: (928) 642-7295
430 S Main St, Fredonia AZ 86022
Kaibab Plateau VC: (928) 643-7298
Hwy 67 and 89A Jacob Lake, AZ 86022
Kaibab National Forest SO: (928) 635-8200
800 S 6th St Williams, AZ 86046
Grand Canyon NP: (928) 638-7888
(Visitor Info)
Grand Canyon NP North Rim: (928) 638-7864
AZ-67 North Rim, AZ 86023
BLM AZ Strip Field Office: (435) 688-3200
345 E Riverside Dr St. George, UT 84790
BLM Kanab Field Office: (435) 644-1272
669 S Hwy 89A Kanab, UT 84741
Arizona Game and Fish: (928) 774-5227
3500 S Lake Mary Rd Flagstaff, AZ 86001
Kane County Hospital: (435) 644-5811
355 Main St Kanab, UT 84741
Coconino County Sheriff: (928) 774-4523
914 S Spaulding Street, AZ 86001

In the Event of Emergency Dial 911

Legend

Legend containing symbols for: Roads Open to Highway Legal Vehicles, Roads Open to All Vehicles, Highways, US, State, Other Public Roads, Motorized Dispersed Camping, Both Sides, Motorized Dispersed Camping, One Side, FS Campground, Information Site, FS Cabin, Forest or Unit Boundary, National Forest System Lands, Non-National Forest System Lands within the National Forest, Political Boundary, Wilderness Areas, Not Open to Game Retrieval, Lakes and Rivers, Short Route Identifier.

EXPLANATION OF LEGEND ITEMS

Roads Open to Highway Legal Vehicles Only:

These roads are open only to motor vehicles licensed under State law for general operation on all public roads within the state.

Roads Open to All Vehicles:

These roads are open to all motor vehicles, including smaller off-highway vehicles that may not be licensed for highway use (but not to operate or overweight vehicles under State traffic law).

Dispersed Camping/Game Retrieval:

Dispersed Camping/Game Retrieval, Both Sides. This symbol is used along with a designated road or trail to indicate limited cross-country motor vehicle use within a specific distance of that route, solely for the purpose of dispersed camping and/or game retrieval. The dots indicate where this activity is permitted. Refer to the Dispersed Camping/Game Retrieval Table for specifics.

Other Public Roads:

Highways, U.S. State. These symbols are used to show routes the Forest Service does not have jurisdiction over and has not designated for motorized use. These symbols are part of the reference layers showing connections to towns and cities outside the forest boundary.

Short Route Identifier:

This symbol is used for roads that are too short to show a symbol type on the map. The symbol contains the number of the road or trail. Users should refer to the corresponding number in the Short Route Table for designation information.

Game Retrieval: Elk and Bison Only

The limited use of a motor vehicle is allowed off of the designated road system to retrieve a legally hunted and tagged elk or bison during elk or bison hunting seasons as designated by the Arizona Game and Fish Department, and for 24 hours following the end of each season.

Note: E-bikes only allowed on motorized roads and routes on the Kaibab National Forest.

The Forest Service manages e-bikes as a motor vehicle. Class 1, 2, and 3 e-bikes are allowed on roads designated for all classes of motor vehicles and roads designated for motorized mixed use.

Be Aware

Designated roads may be subject to wet weather or winter road closures, or may be temporarily closed due to seasonal conditions, project-related work, emergency activities, or fire/freight operations. Roads designated on this map are available for motorized use as depicted except when posted as being unsuitable for use due to wet conditions or other administrative or public safety needs. Please check the Kaibab National Forest web page for the latest information about the status of roads.

Parking Along Designated Routes

Motor vehicles may be parked up to 30 feet from the edge of the road surface when it is safe to do so without causing damage to NFS resources or facilities, unless prohibited by state law, a traffic sign, or an order (36 CFR 261.54).

Motorized Dispersed Camping Corridors

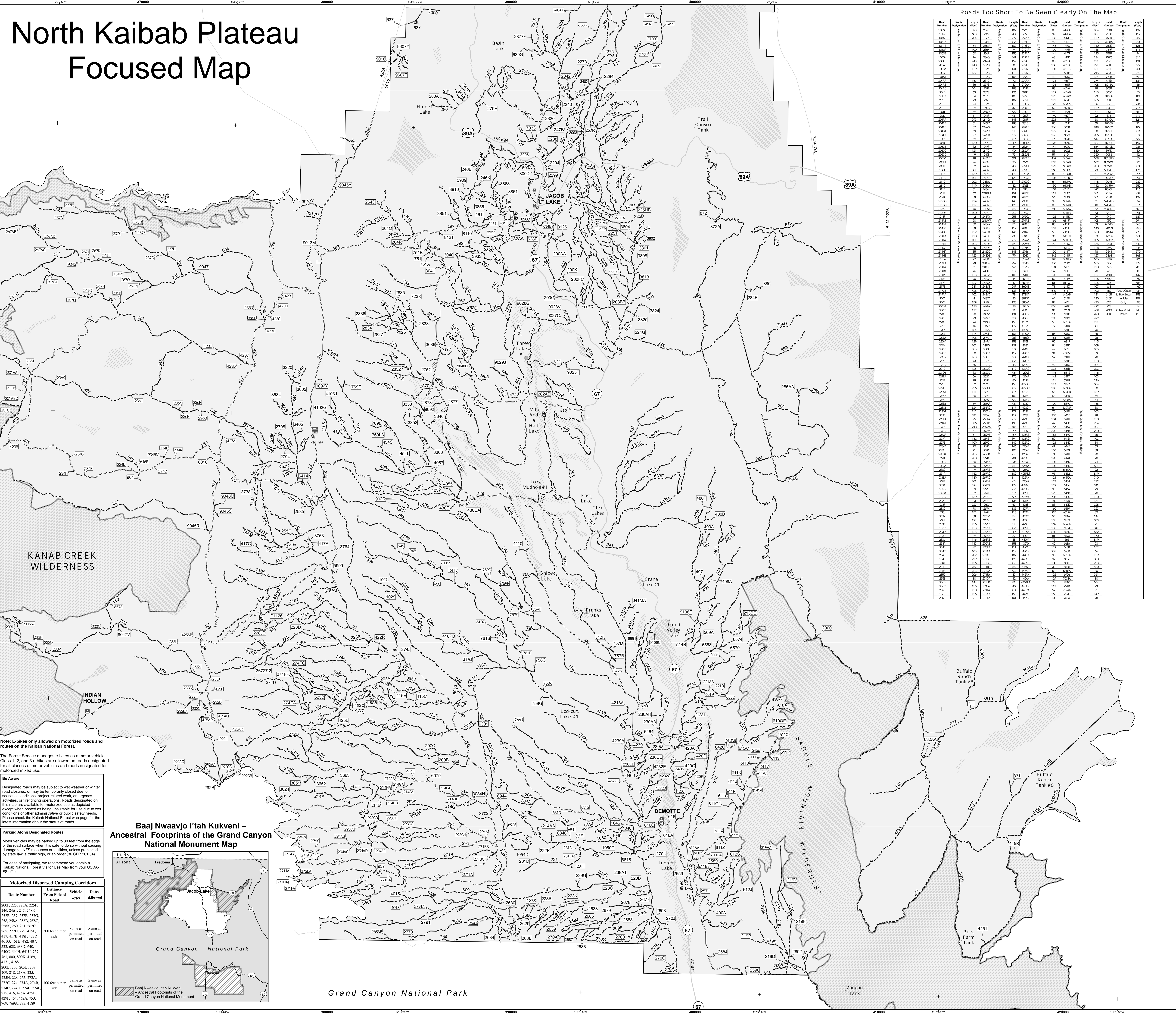
Table with columns: Route Number, Distance From Side of Road, Vehicle Type, Dates Allowed. Lists routes like 200F, 225, 225A, 225F, 234, 2407, 247, 248F, etc.

The vehicle used to retrieve the game may be operated off the route on National Forest Lands up to one mile.

If the downed game is further than the allowed distance, the vehicle may be driven only the specified distance from the designated route.

Motor vehicles may be parked up to 30 feet from the edge of the road surface when it is safe to do so without causing damage to NFS resources or facilities, unless prohibited by state law, a traffic sign, or an order (36 CFR 261.54).

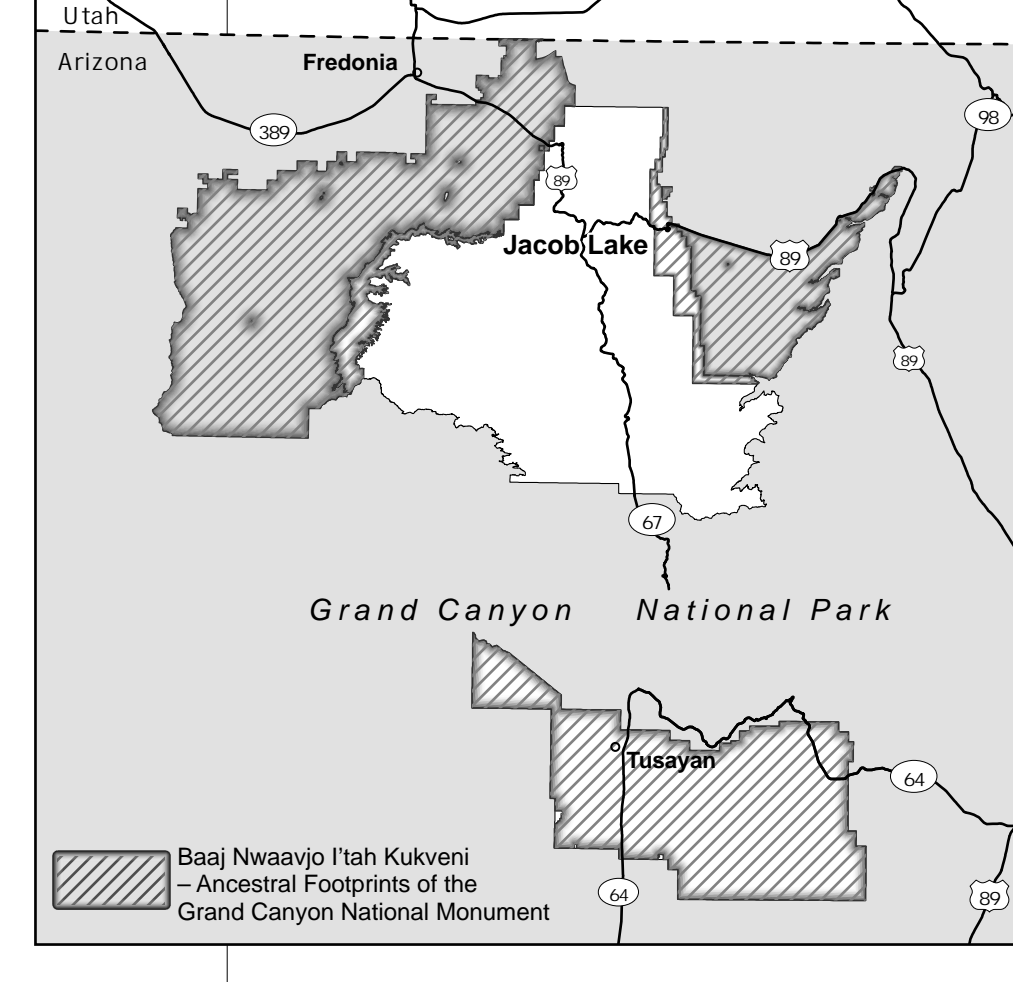
For ease of navigating, we recommend you obtain a Kaibab National Forest Visitor Use Map from your USDA-FS office.



Roads Too Short To Be Seen Clearly On The Map

Table listing road numbers, lengths, and other details for roads too short to be clearly visible on the map. Columns include Road Number, Length, and other identifiers.

Baaj Nwaavjo l'tah Kukveni - Ancestral Footprints of the Grand Canyon National Monument Map



Grand Canyon National Park