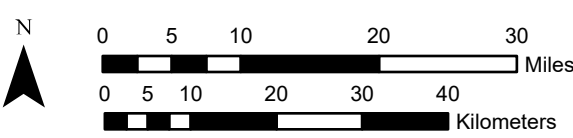
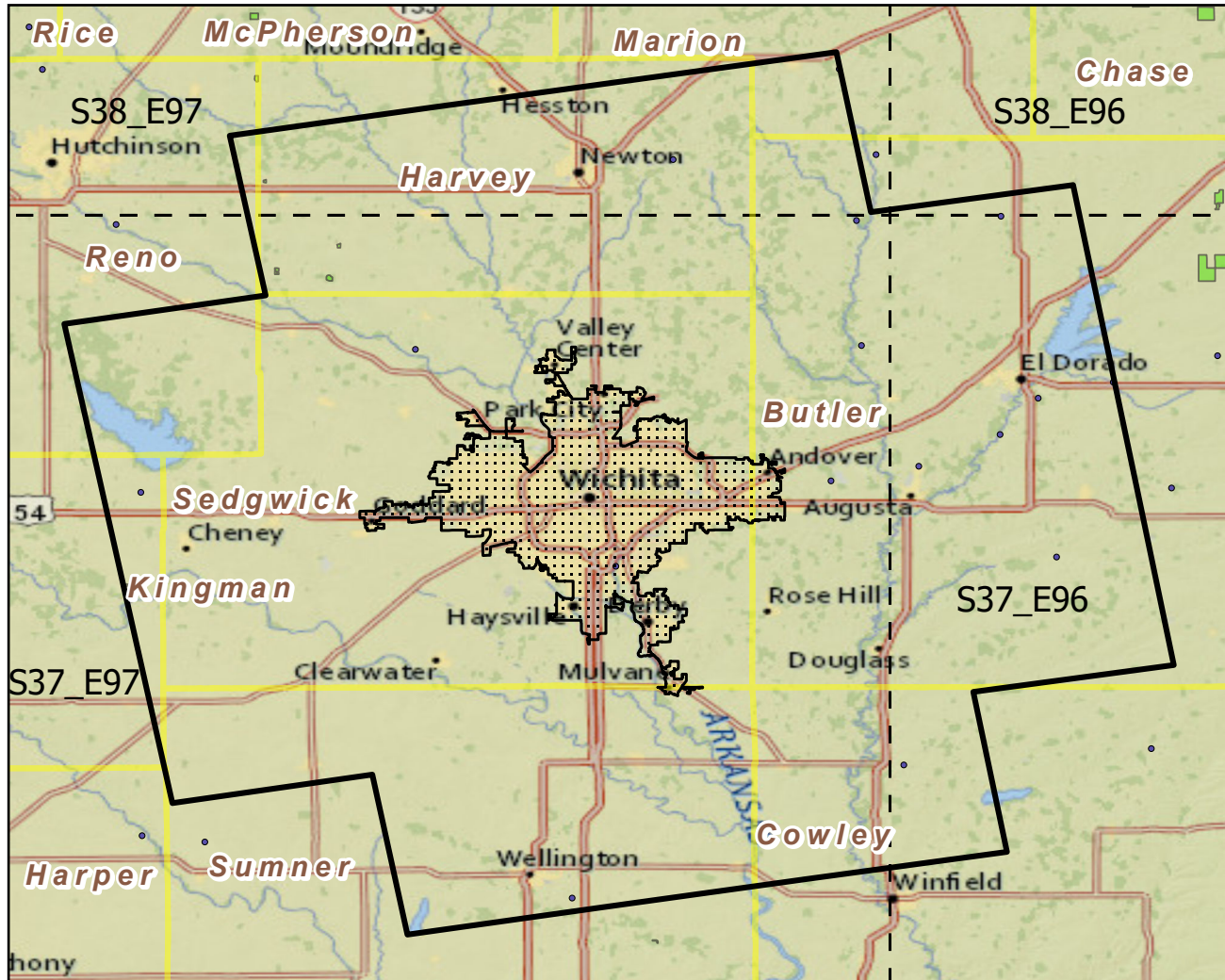


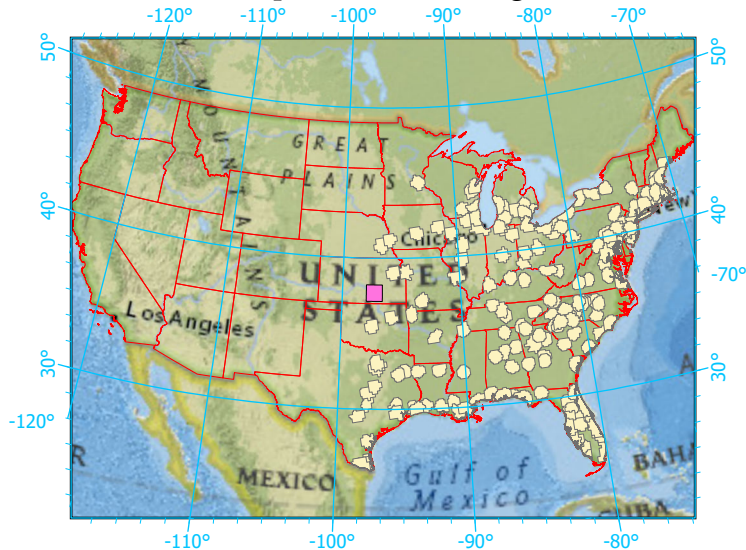
Urban Buffers with Protected Areas and Forest Inventory Plots



Center: 97°18'4"W 37°41'27"N  
 States: Kansas

Scale: 1:881,000

Index map (selected in magenta)



Legend

- Urban Areas      Urban Area (sq km)=568
- Urban Buffers      Buffer Area (sq km)=9137
- State Boundary      Percent Urban=7%
- Forest Inventory Plots      Count=16 plots
- Counties
- 1x1 Degree Grid
- Protected Areas**
- Federal

Note: This map page is intended to accompany the forest summary tables, based on the inventory plots shown. Tables are located at <https://www.fs.fed.us/nrs/atlas/combined/resources/summaries/urban/>.