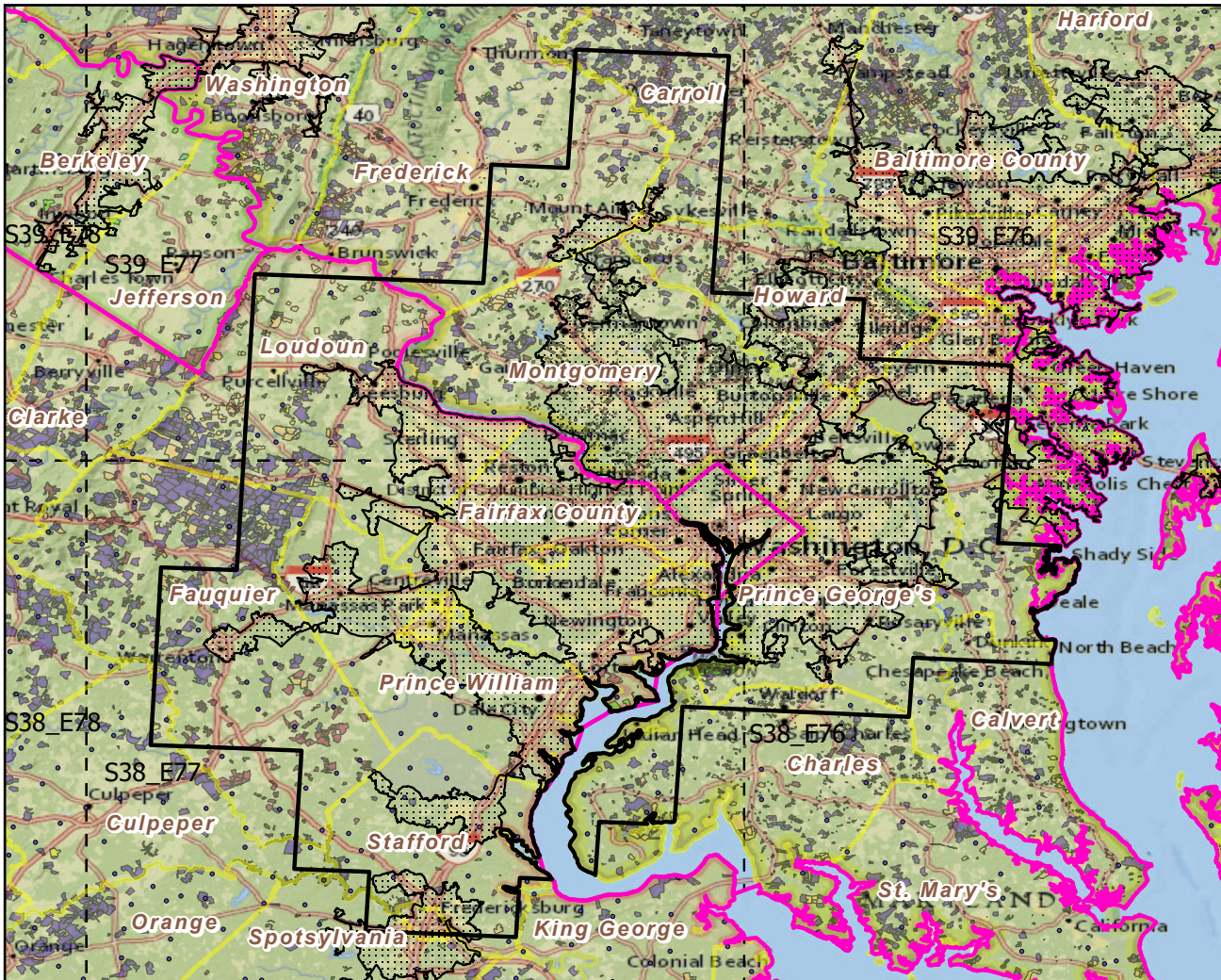
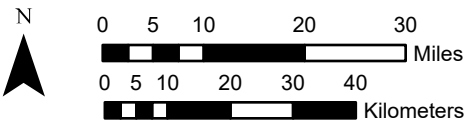


Urban Buffers with Protected Areas and Forest Inventory Plots

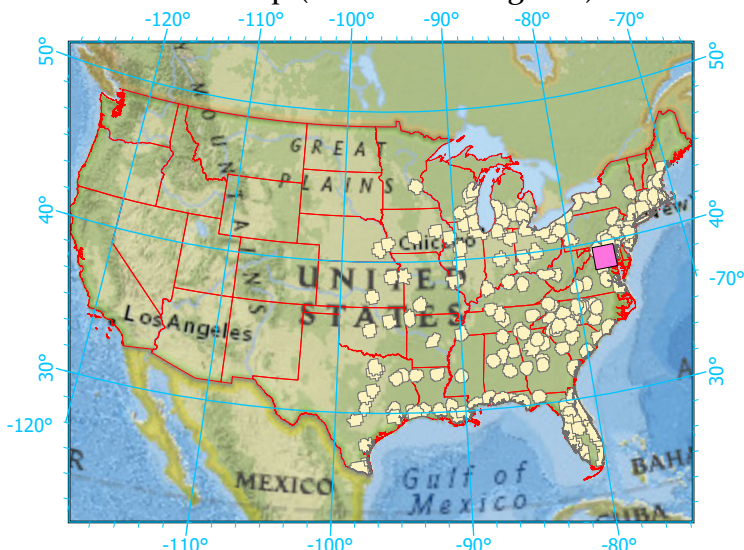


Center: 77°11'46"W 38°57'N
 States: Virginia; District of Columbia; Maryland



Scale: 1:1,205,000

Index map (selected in magenta)



Legend

	Urban Areas	Urban Area (sq km)=3493
	Urban Buffers	Buffer Area (sq km)=9137
	State Boundary	Percent Urban=36%
	Forest Inventory Plots	Count=173 plots
	Counties	
	1x1 Degree Grid	

Protected Areas

	Federal
	Local Government
	Non-Governmental Organization
	Private
	Regional Agency Special District
	State
	Unknown

Note: This map page is intended to accompany the forest summary tables, based on the inventory plots shown. Tables are located at <https://www.fs.fed.us/nrs/atlas/combined/resources/summaries/urban/>.