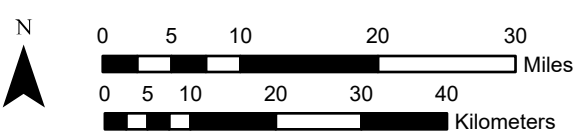
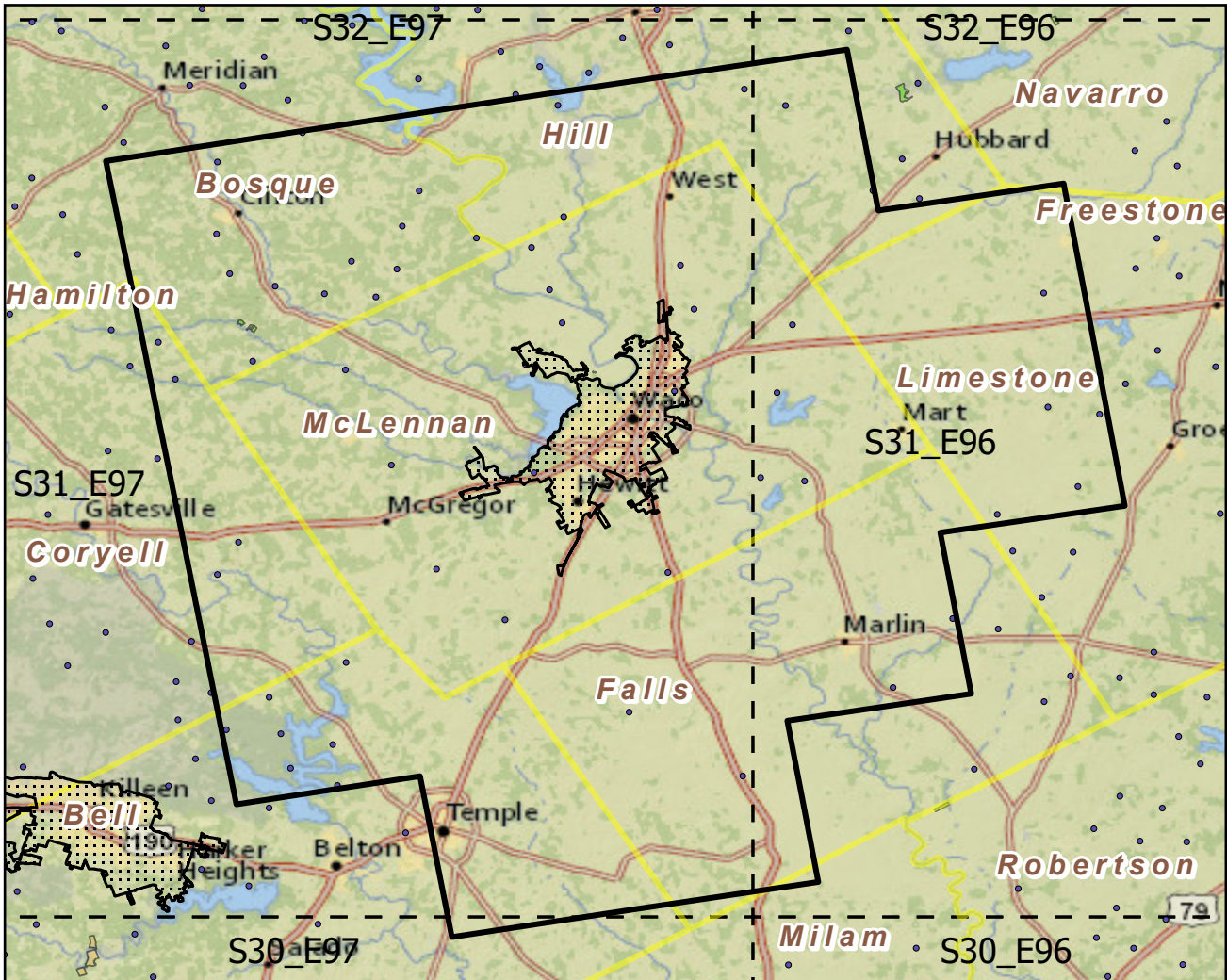


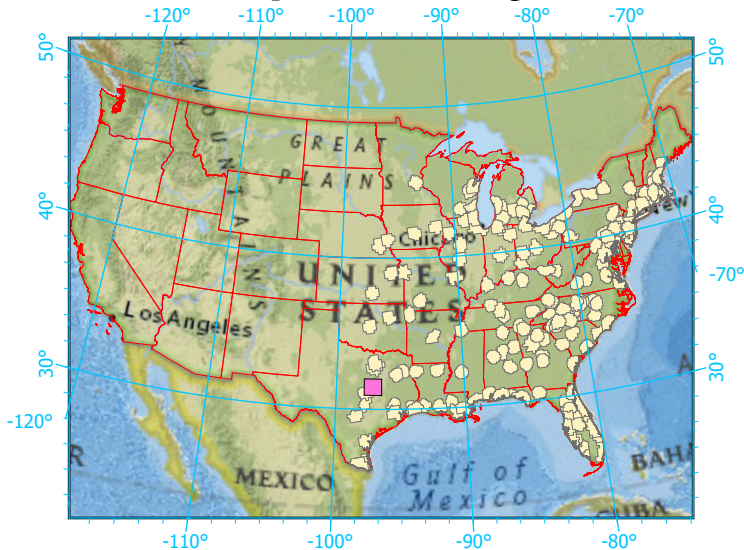
Urban Buffers with Protected Areas and Forest Inventory Plots



Center: 97°9'12"W 31°28'20"N
 States: Texas

Scale: 1:884,000

Index map (selected in magenta)



Legend

- Urban Areas Urban Area (sq km)=235
- Urban Buffers Buffer Area (sq km)=9137
- State Boundary Percent Urban=3%
- Forest Inventory Plots Count=56 plots
- Counties
- 1x1 Degree Grid
- Protected Areas**
- Federal
- Non-Governmental Organization

Note: This map page is intended to accompany the forest summary tables, based on the inventory plots shown. Tables are located at <https://www.fs.fed.us/nrs/atlas/combined/resources/summaries/urban/>.