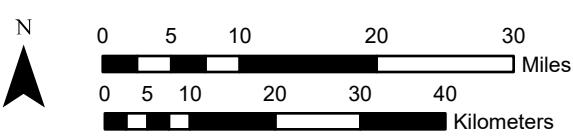
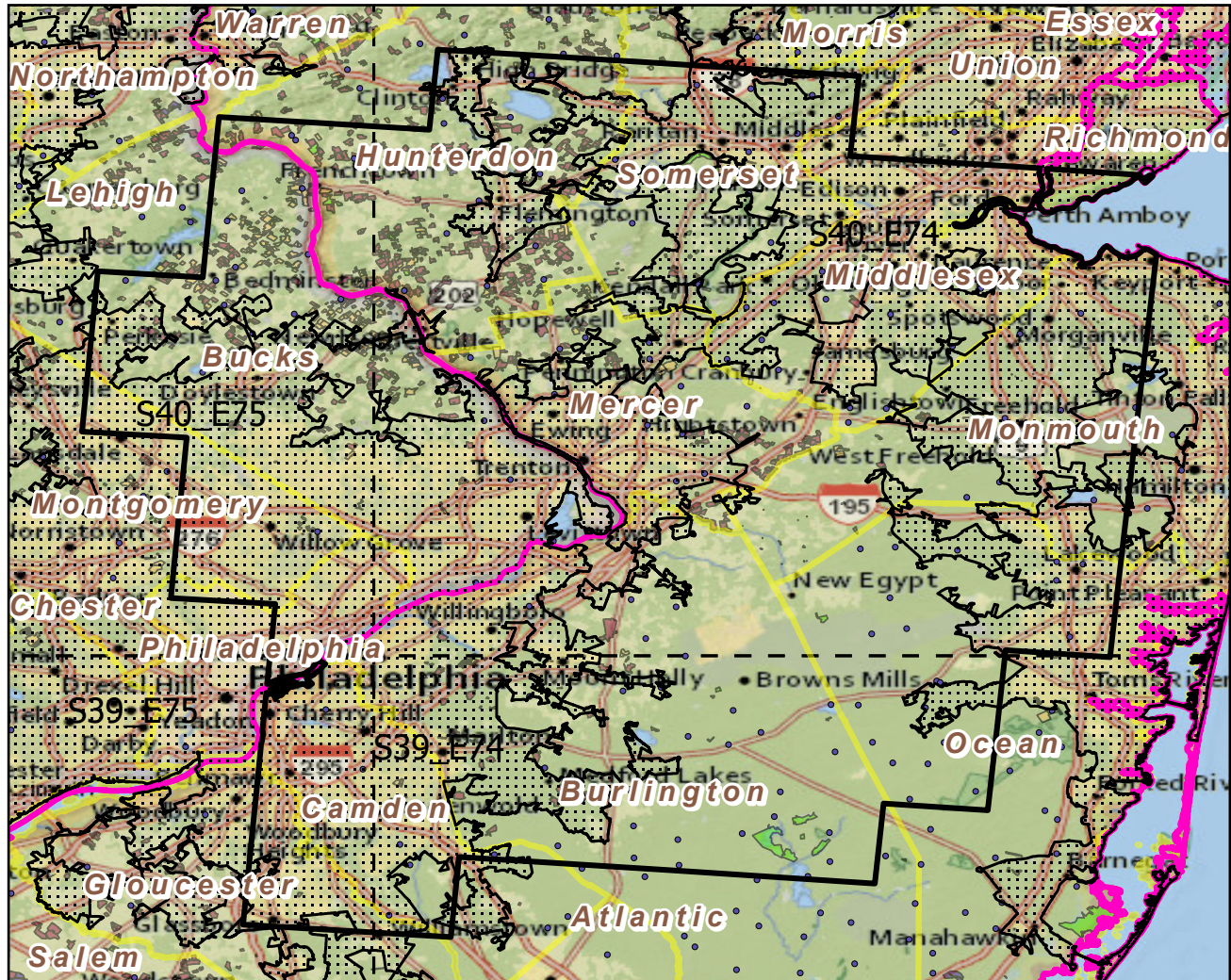


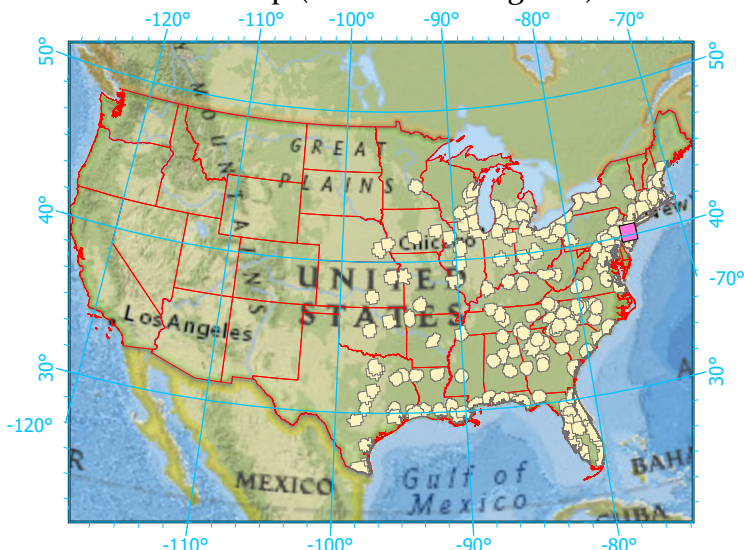
Urban Buffers with Protected Areas and Forest Inventory Plots



Center: 74°43'31"W 40°10'55"N  
 States: New Jersey; New York; Pennsylvania

Scale: 1:888,000

Index map (selected in magenta)



**Legend**

	Urban Areas	Urban Area (sq km)=277
	Urban Buffers	Buffer Area (sq km)=9137
	State Boundary	Percent Urban=3%
	Forest Inventory Plots	Count=136 plots
	Counties	
	1x1 Degree Grid	
<b>Protected Areas</b>		
	Federal	
	Local Government	
	Non-Governmental Organization	
	Private	
	Regional Agency Special District	
	State	
	Unknown	

Note: This map page is intended to accompany the forest summary tables, based on the inventory plots shown. Tables are located at <https://www.fs.fed.us/nrs/atlas/combined/resources/summaries/urban/>.