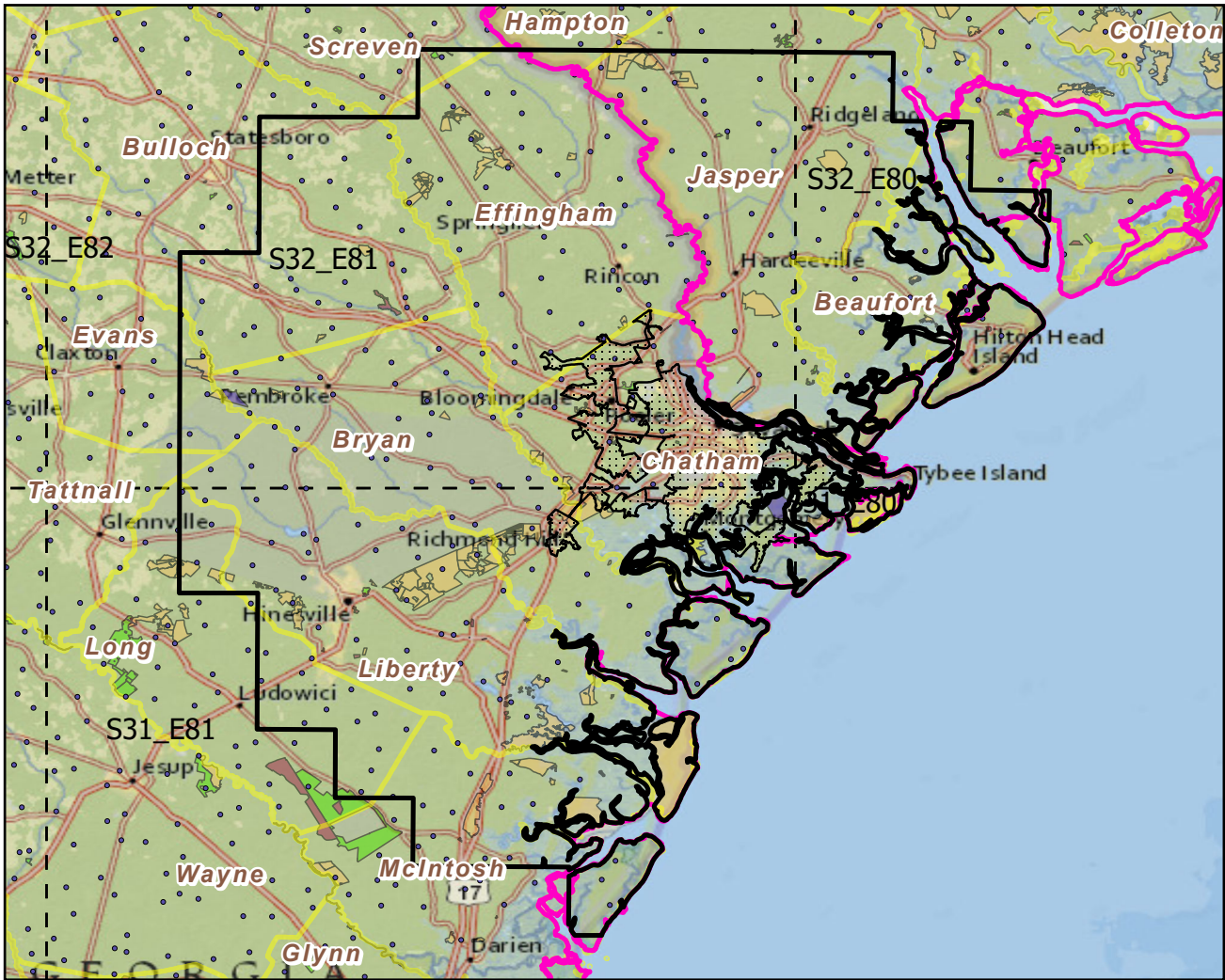
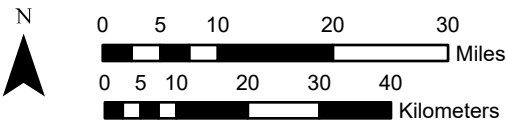


Urban Buffers with Protected Areas and Forest Inventory Plots

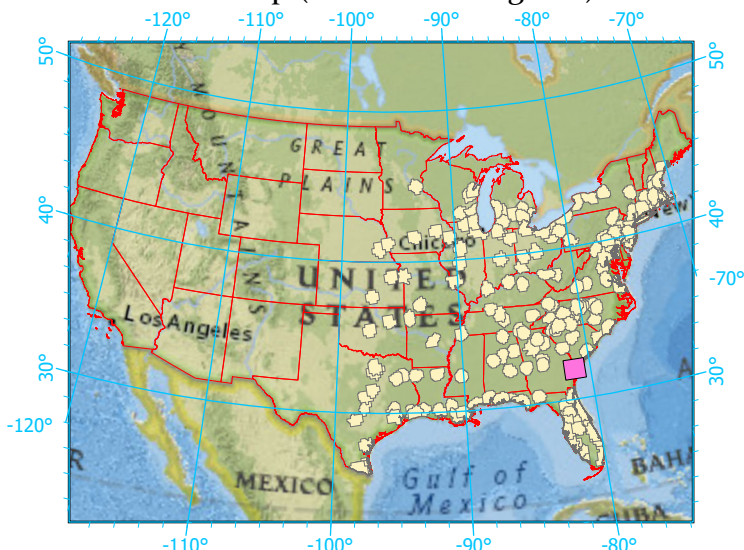


Center: 81°14'31"W 31°59'39"N
 States: Georgia; South Carolina



Scale: 1:1,057,000

Index map (selected in magenta)



Legend

	Urban Areas	Urban Area (sq km)=443
	Urban Buffers	Buffer Area (sq km)=9137
	State Boundary	Percent Urban=5%
	Forest Inventory Plots	Count=268 plots
	Counties	
	1x1 Degree Grid	
Protected Areas		
	Federal	
	Local Government	
	Non-Governmental Organization	
	Private	
	State	

Note: This map page is intended to accompany the forest summary tables, based on the inventory plots shown. Tables are located at <https://www.fs.fed.us/nrs/atlas/combined/resources/summaries/urban/>.