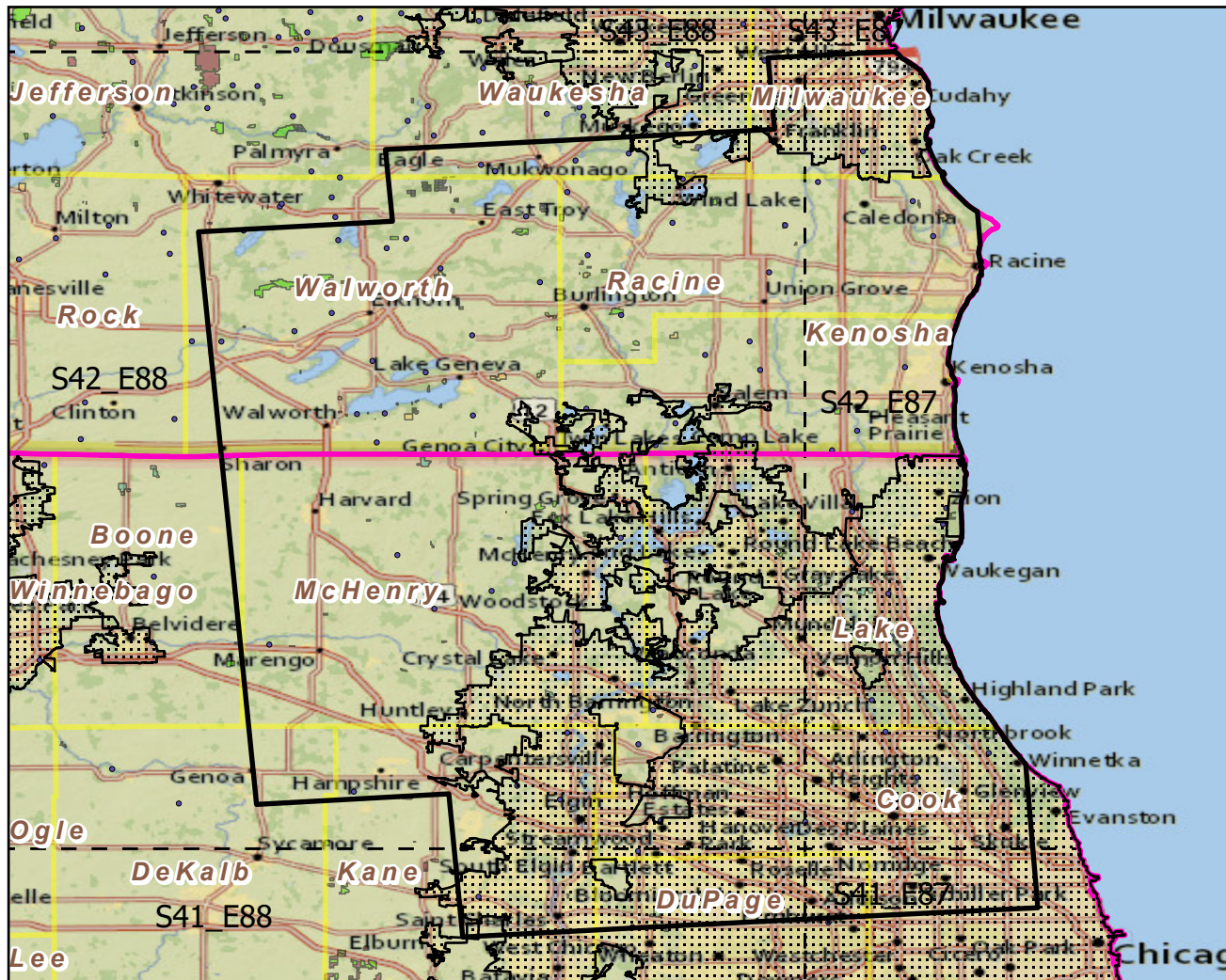


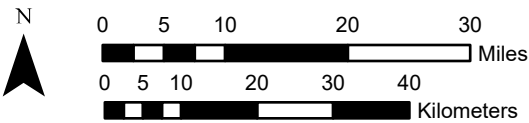
# Round Lake Beach--McHenry--Grayslake, IL--

Landscape Change Research Group  
 Iverson, Prasad, Peters, Matthews  
 Northern Institute of Applied Climate Science  
 USFS Northern Research Station  
 Delaware, Ohio

## Urban Buffers with Protected Areas and Forest Inventory Plots

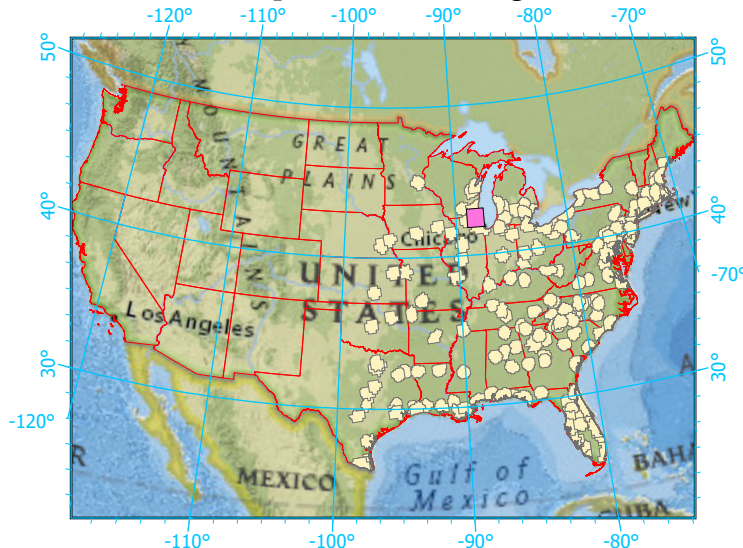


Center: 88°14'3"W 42°26'41"N  
 States: Illinois; Wisconsin



Scale: 1:993,000

Index map (selected in magenta)



### Legend

- Urban Areas      Urban Area (sq km)=444
- Urban Buffers      Buffer Area (sq km)=9137
- State Boundary      Percent Urban=6%
- Forest Inventory Plots      Count=75 plots
- Counties
- 1x1 Degree Grid
- Protected Areas**
  - Federal
  - Local Government
  - Non-Governmental Organization
  - Regional Agency Special District
  - State

Note: This map page is intended to accompany the forest summary tables, based on the inventory plots shown. Tables are located at <https://www.fs.fed.us/nrs/atlas/combined/resources/summaries/urban/>.