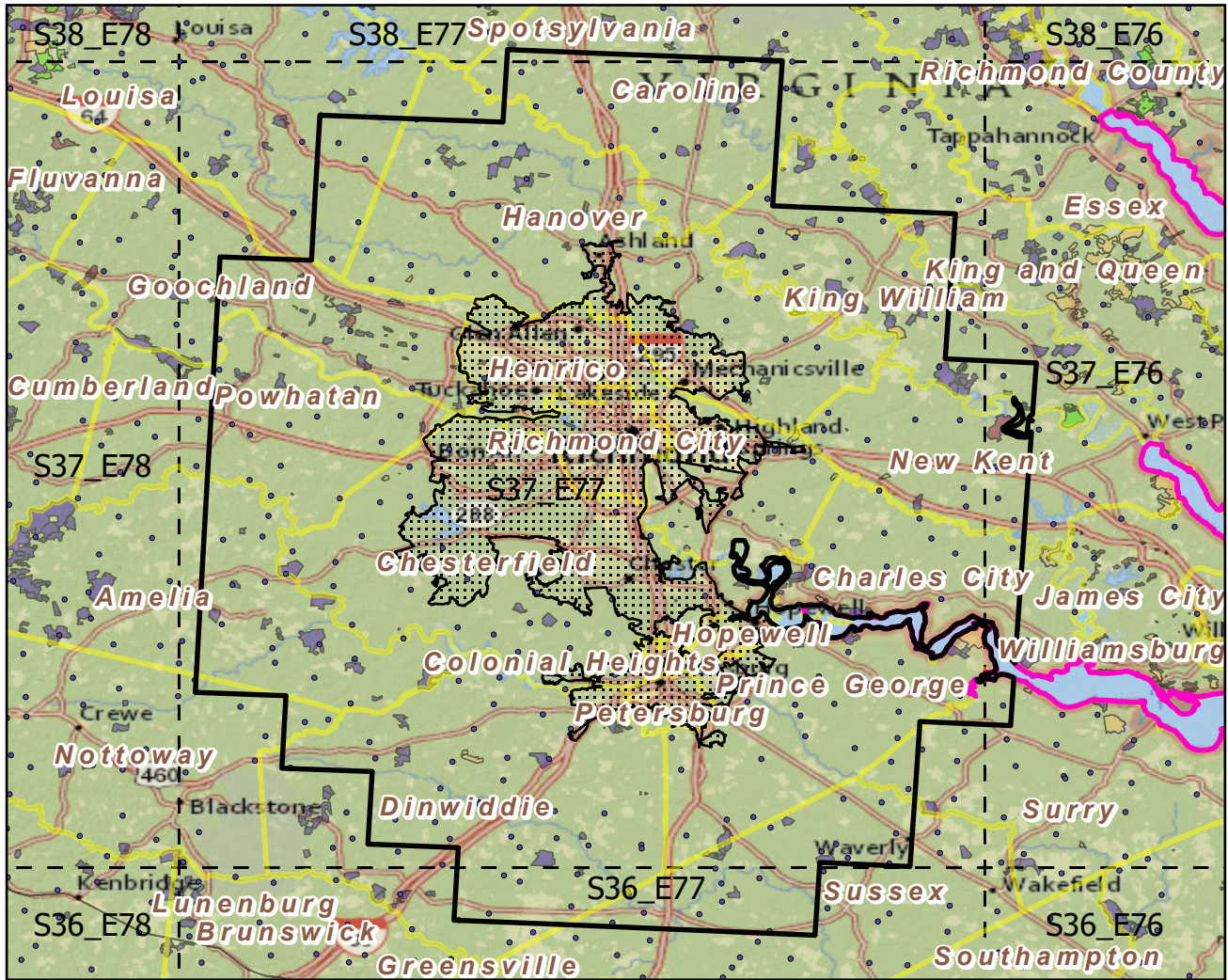
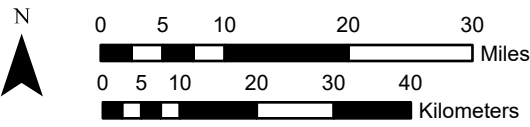


Urban Buffers with Protected Areas and Forest Inventory Plots

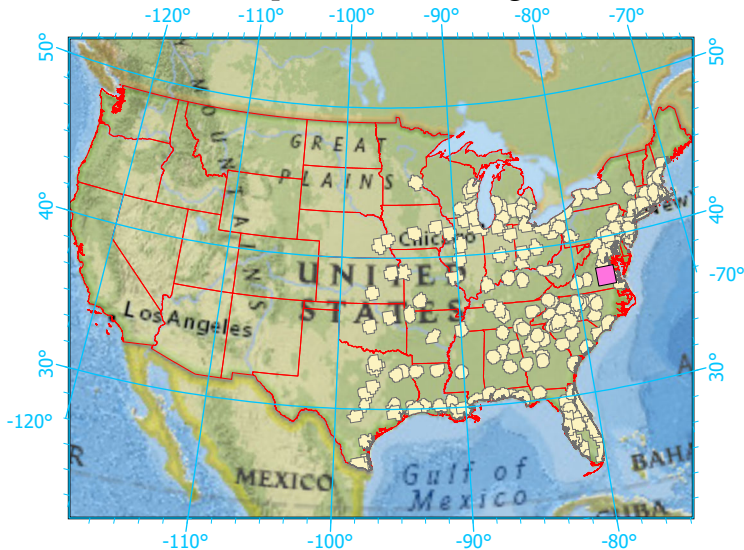


Center: 77°27'28"W 37°27'56"N  
 States: Virginia



Scale: 1:982,000

Index map (selected in magenta)



Legend

- Urban Areas      Urban Area (sq km)=1298
- Urban Buffers      Buffer Area (sq km)=9137
- State Boundary      Percent Urban=15%
- Forest Inventory Plots      Count=255 plots
- Counties
- 1x1 Degree Grid
- Protected Areas**
- Federal
- Local Government
- Non-Governmental Organization
- Regional Agency Special District
- State

Note: This map page is intended to accompany the forest summary tables, based on the inventory plots shown. Tables are located at <https://www.fs.fed.us/nrs/atlas/combined/resources/summaries/urban/>.