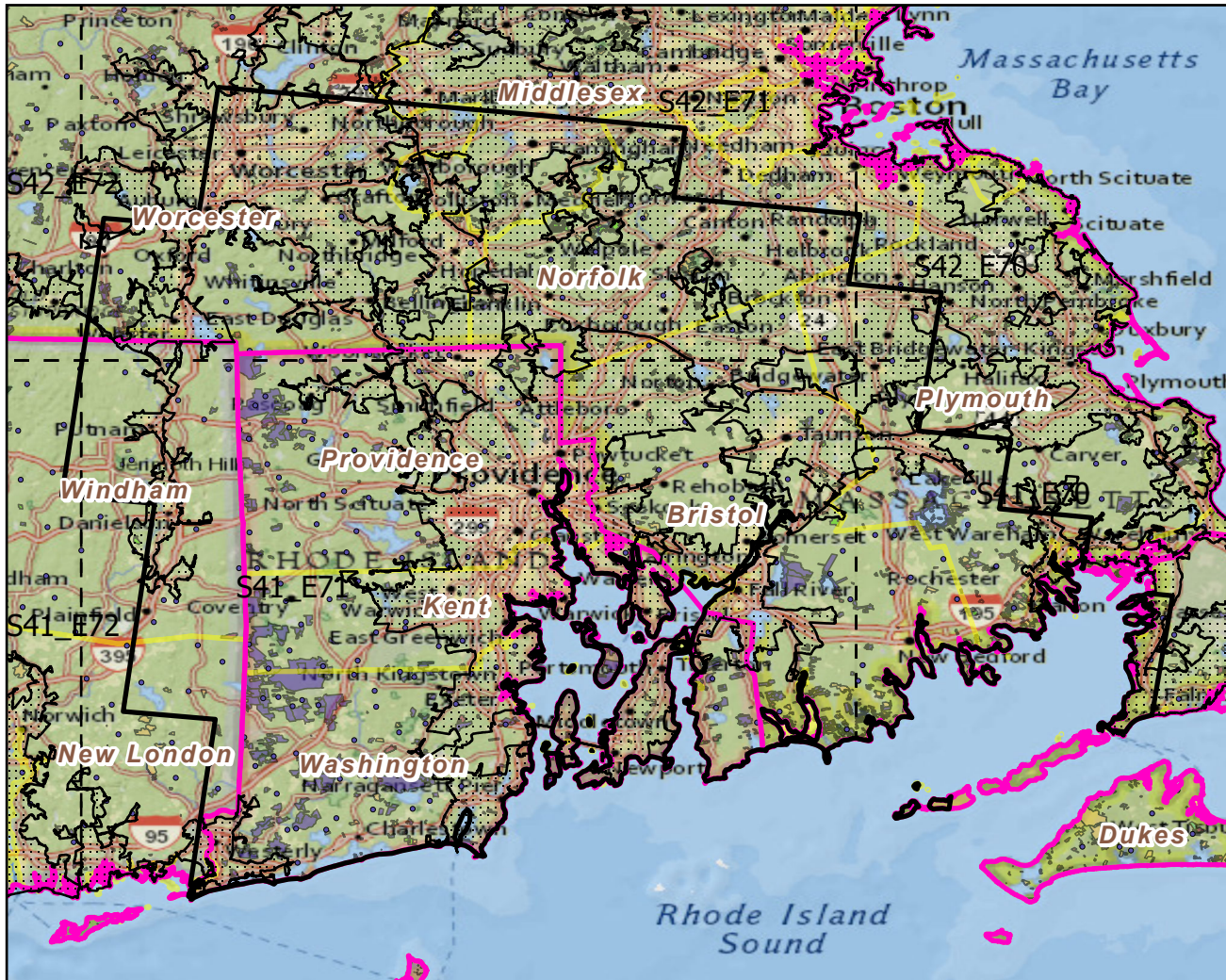


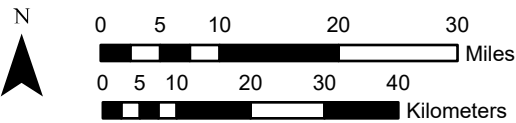
Providence, RI--MA

Landscape Change Research Group
 Iverson, Prasad, Peters, Matthews
 Northern Institute of Applied Climate Science
 USFS Northern Research Station
 Delaware, Ohio

Urban Buffers with Protected Areas and Forest Inventory Plots

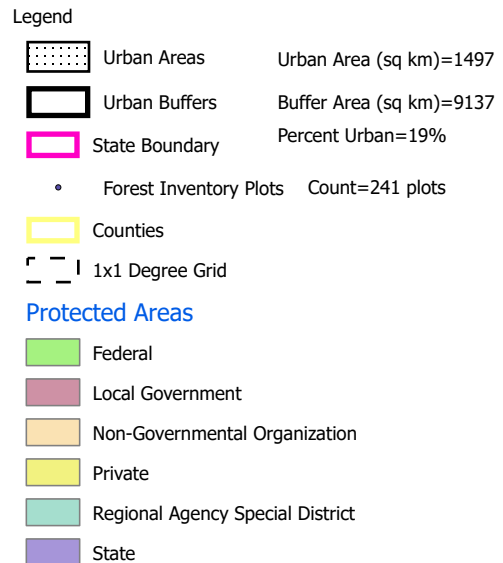
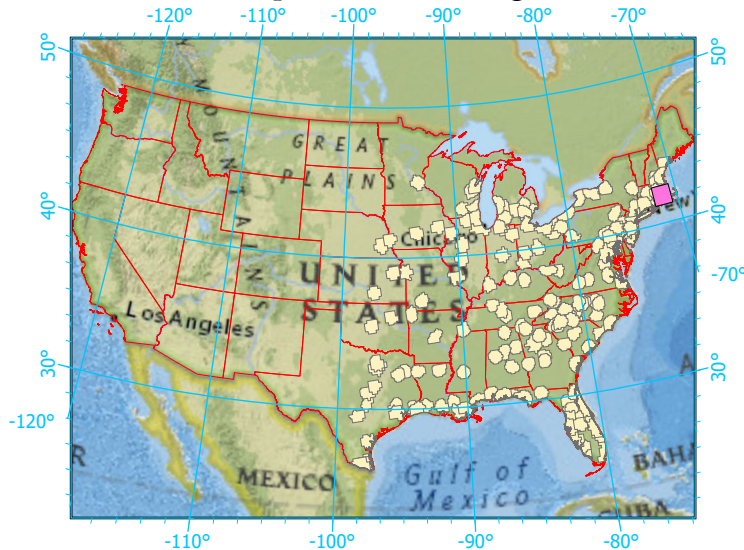


Center: 71°18'31"W 41°49'42"N
 States: Connecticut; Massachusetts; Rhode Island



Scale: 1:1,023,000

Index map (selected in magenta)



Note: This map page is intended to accompany the forest summary tables, based on the inventory plots shown. Tables are located at <https://www.fs.fed.us/nrs/atlas/combined/resources/summaries/urban/>.