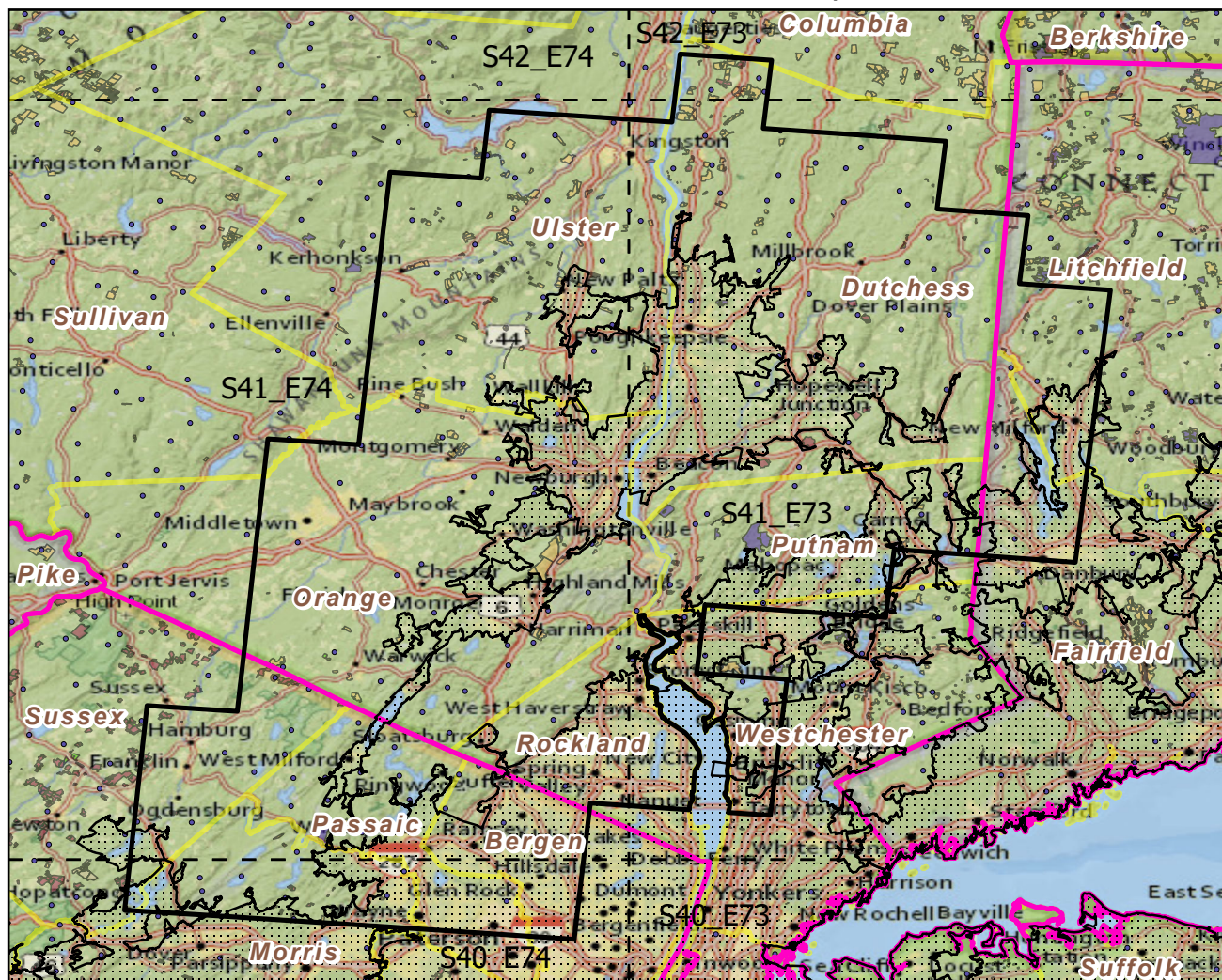
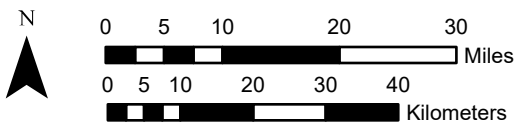


Urban Buffers with Protected Areas and Forest Inventory Plots

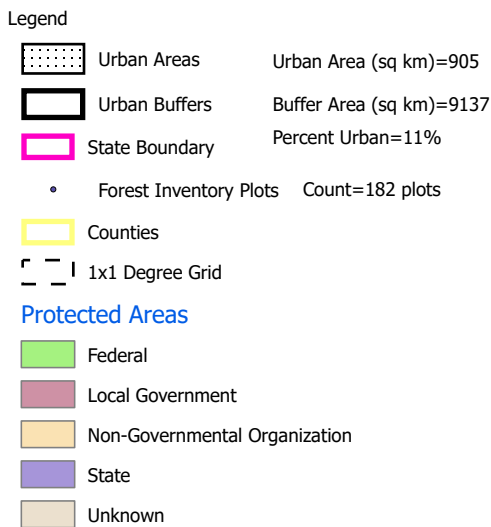
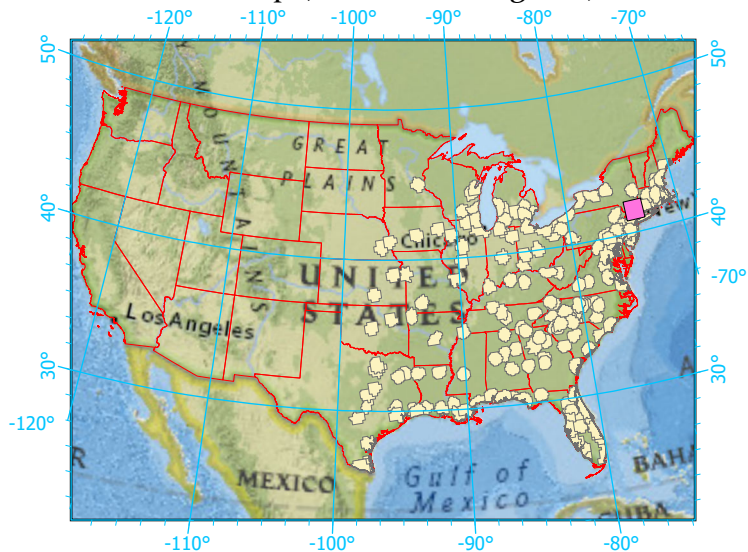


Center: 74°0'53"W 41°28'40"N  
 States: New Jersey; New York; Connecticut



Scale: 1:1,041,000

Index map (selected in magenta)



Note: This map page is intended to accompany the forest summary tables, based on the inventory plots shown. Tables are located at <https://www.fs.fed.us/nrs/atlas/combined/resources/summaries/urban/>.