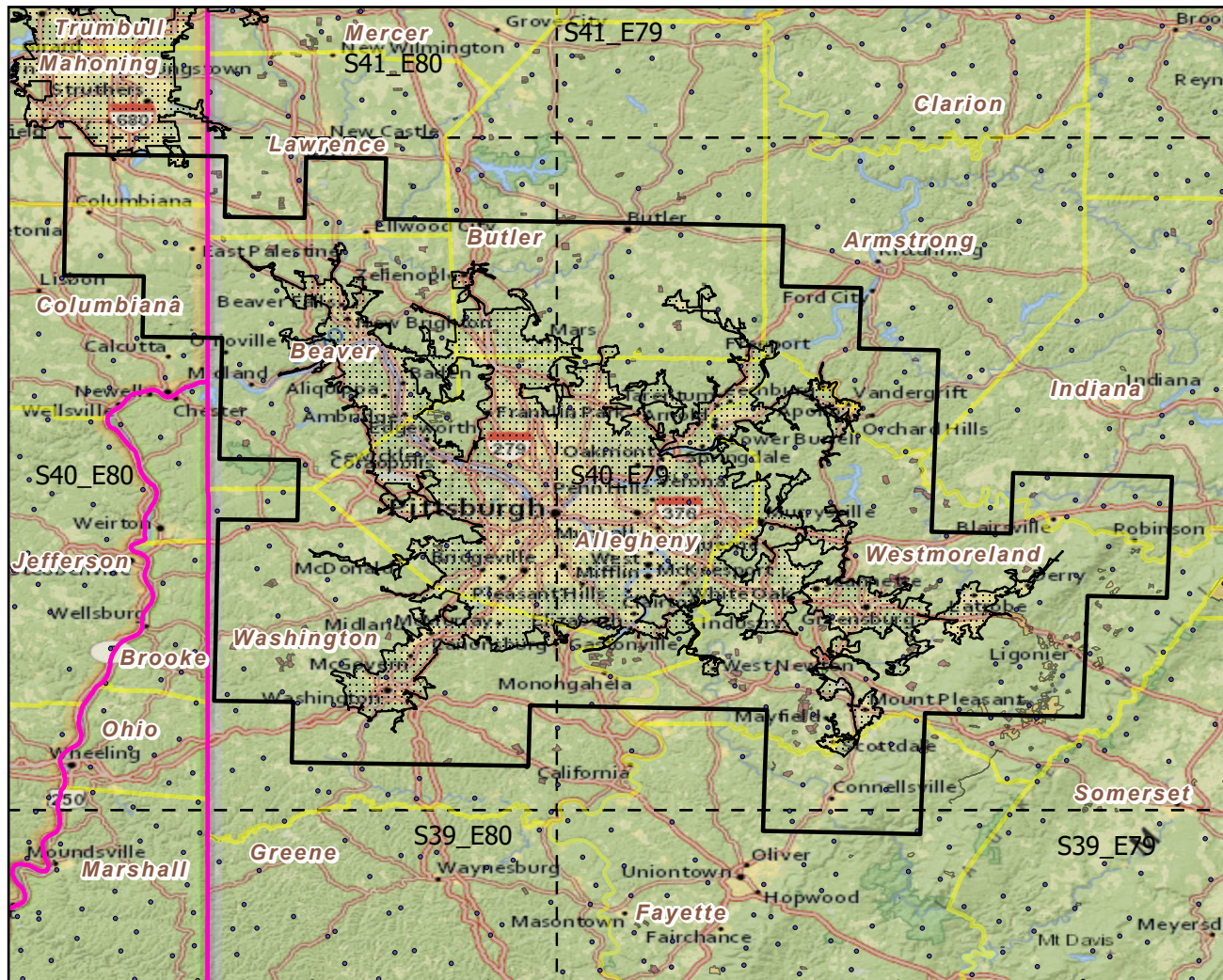
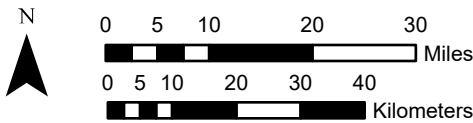


Urban Buffers with Protected Areas and Forest Inventory Plots

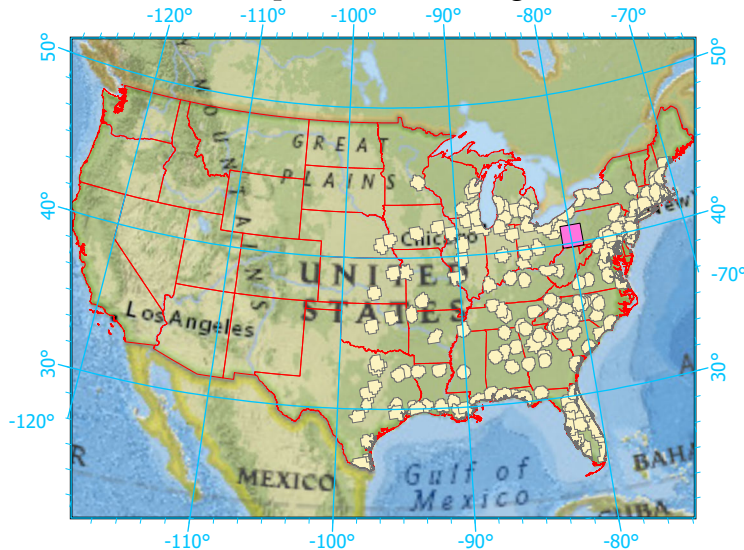


Center: 79°54'32"W 40°28'11"N
 States: Ohio; Pennsylvania



Scale: 1:1,177,000

Index map (selected in magenta)



Legend

- Urban Areas Urban Area (sq km)=2387
- Urban Buffers Buffer Area (sq km)=9137
- State Boundary Percent Urban=27%
- Forest Inventory Plots Count=176 plots
- Counties
- 1x1 Degree Grid
- Protected Areas**
- Federal
- Local Government
- Non-Governmental Organization

Note: This map page is intended to accompany the forest summary tables, based on the inventory plots shown. Tables are located at <https://www.fs.fed.us/nrs/atlas/combined/resources/summaries/urban/>.