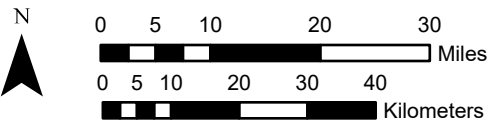
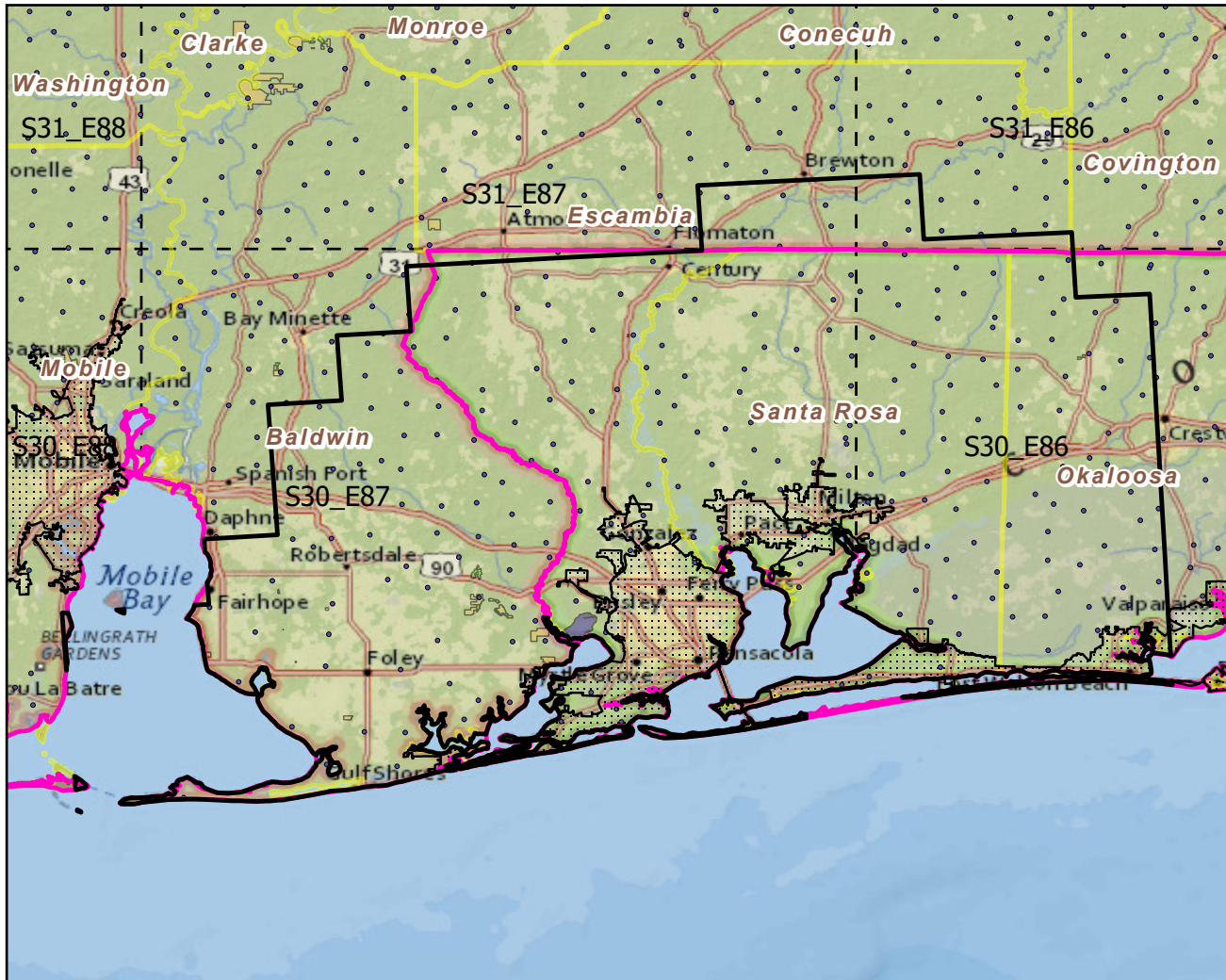


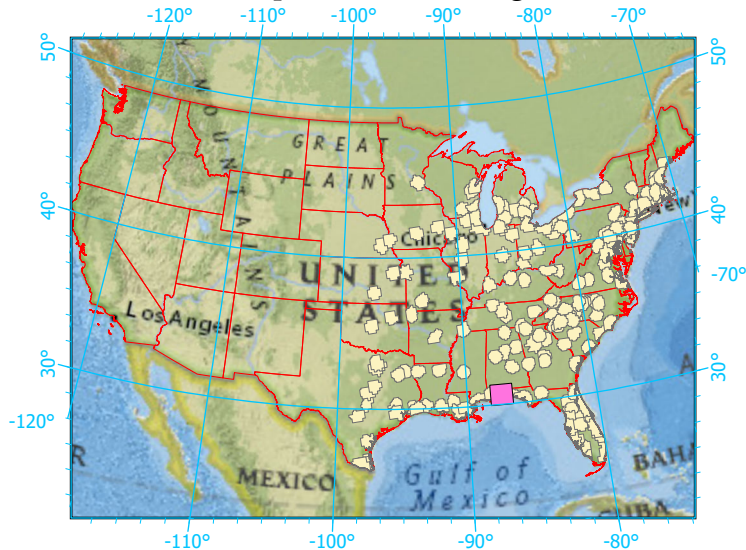
Urban Buffers with Protected Areas and Forest Inventory Plots



Center: 87°20'4"W 30°39'29"N
 States: Florida; Alabama

Scale: 1:1,109,000

Index map (selected in magenta)



Legend

- Urban Areas Urban Area (sq km)=619
- Urban Buffers Buffer Area (sq km)=9137
- State Boundary Percent Urban=7%
- Forest Inventory Plots Count=255 plots
- Counties
- 1x1 Degree Grid
- Protected Areas**
- Federal
- Non-Governmental Organization
- Regional Agency Special District
- State

Note: This map page is intended to accompany the forest summary tables, based on the inventory plots shown. Tables are located at <https://www.fs.fed.us/nrs/atlas/combined/resources/summaries/urban/>.