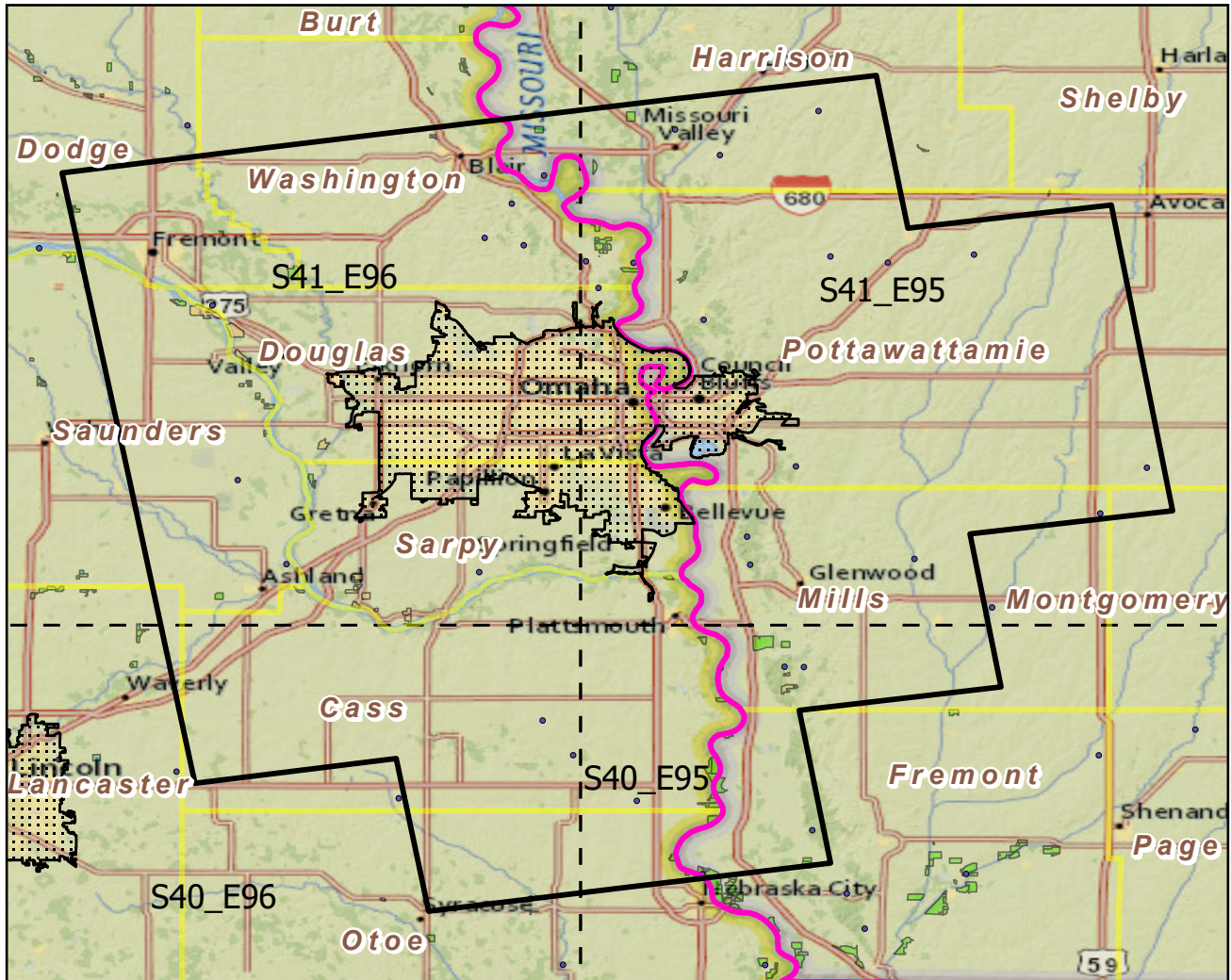
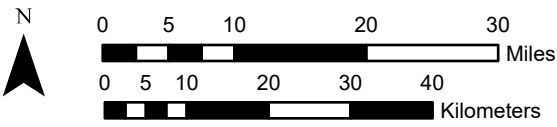


Urban Buffers with Protected Areas and Forest Inventory Plots

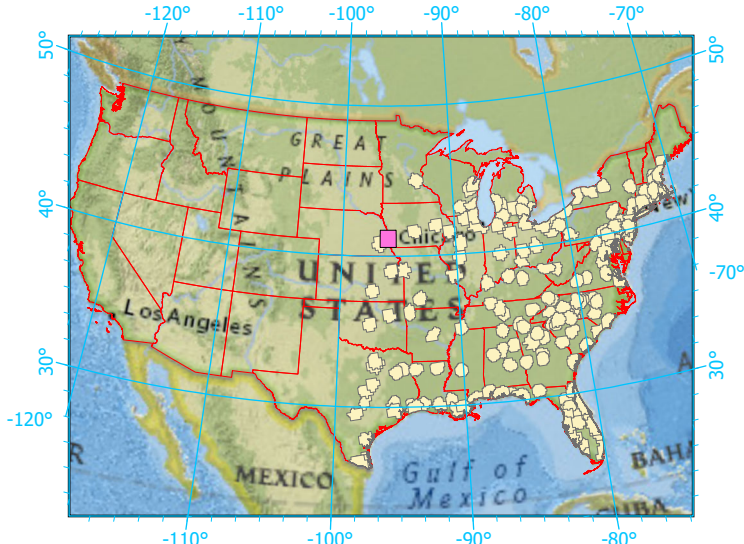


Center: 95°57'26"W 41°9'12"N  
 States: Iowa; Nebraska



Scale: 1:923,000

Index map (selected in magenta)



- Legend
- Urban Areas      Urban Area (sq km)=715
  - Urban Buffers      Buffer Area (sq km)=9137
  - State Boundary      Percent Urban=9%
  - Forest Inventory Plots      Count=34 plots
  - Counties
  - 1x1 Degree Grid
  - Protected Areas**
  - Federal
  - Non-Governmental Organization
  - Regional Agency Special District

Note: This map page is intended to accompany the forest summary tables, based on the inventory plots shown. Tables are located at <https://www.fs.fed.us/nrs/atlas/combined/resources/summaries/urban/>.