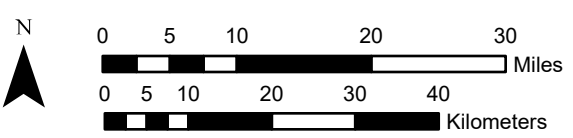
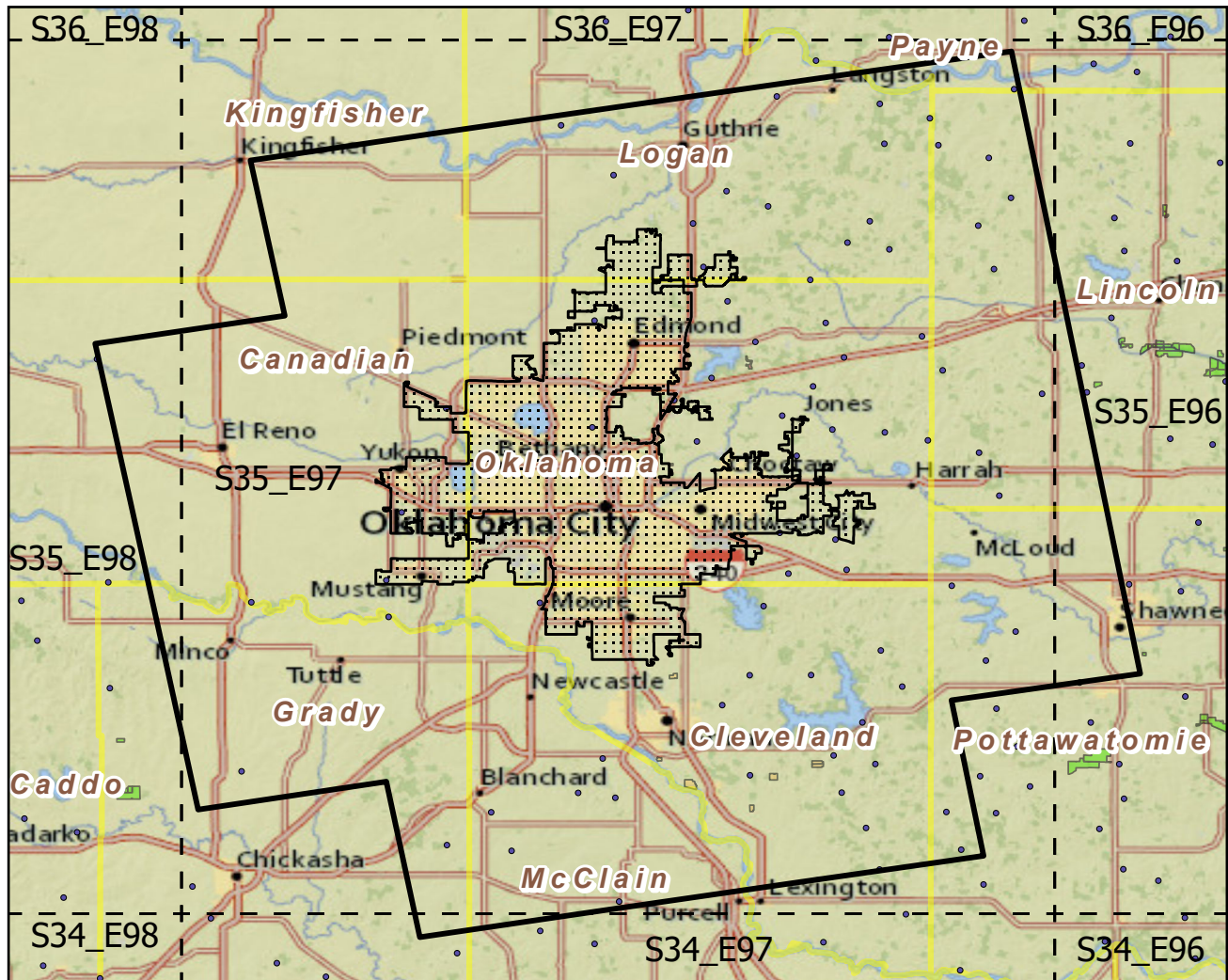


Oklahoma City, OK

Landscape Change Research Group
 Iverson, Prasad, Peters, Matthews
 Northern Institute of Applied Climate Science
 USFS Northern Research Station
 Delaware, Ohio

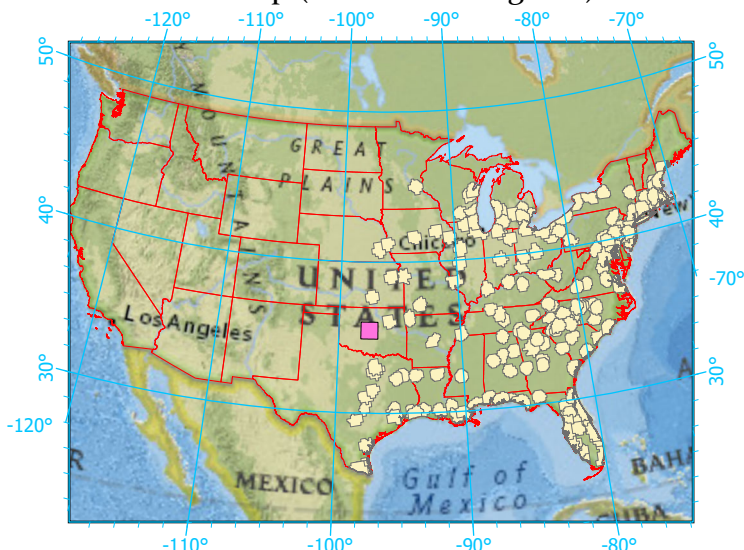
Urban Buffers with Protected Areas and Forest Inventory Plots



Center: 97°30'2"W 35°28'48"N
 States: Oklahoma

Scale: 1:906,000

Index map (selected in magenta)



Legend

| | | |
|------------------------|-------------------------------|--------------------------|
| | Urban Areas | Urban Area (sq km)=1084 |
| | Urban Buffers | Buffer Area (sq km)=9137 |
| | State Boundary | Percent Urban=12% |
| | Forest Inventory Plots | Count=77 plots |
| | Counties | |
| | 1x1 Degree Grid | |
| Protected Areas | | |
| | Federal | |
| | Local Government | |
| | Non-Governmental Organization | |

Note: This map page is intended to accompany the forest summary tables, based on the inventory plots shown. Tables are located at <https://www.fs.fed.us/nrs/atlas/combined/resources/summaries/urban/>.