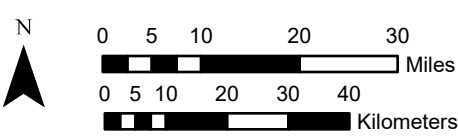
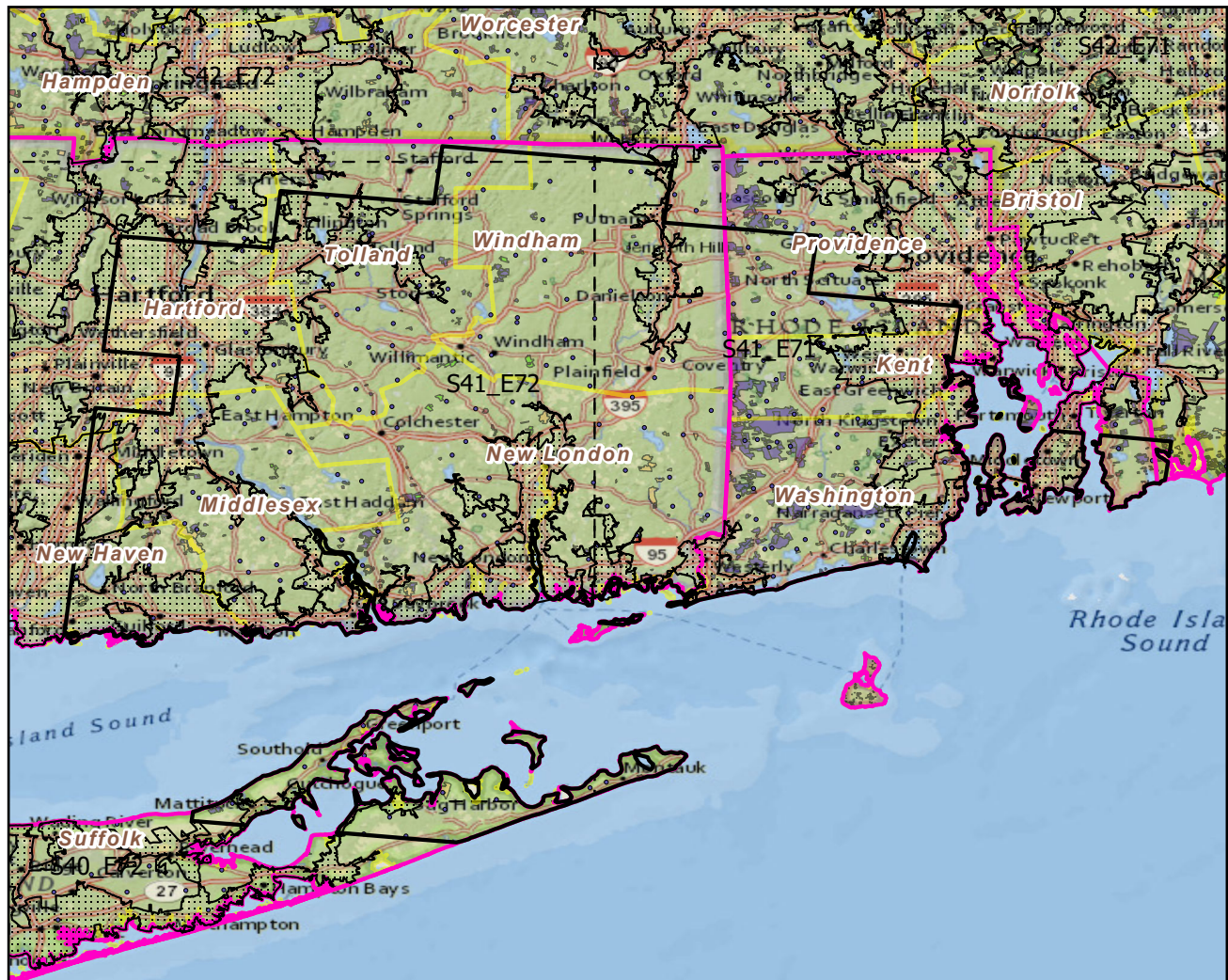


Norwich--New London, CT--RI

Landscape Change Research Group
 Iverson, Prasad, Peters, Matthews
 Northern Institute of Applied Climate Science
 USFS Northern Research Station
 Delaware, Ohio

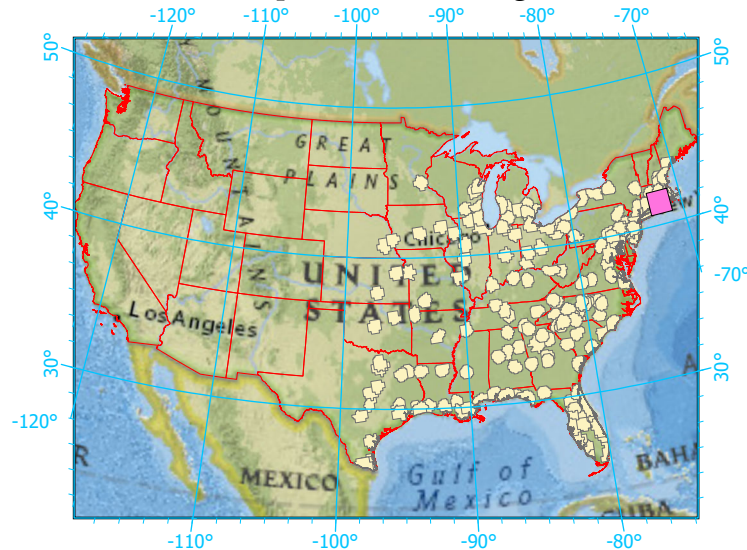
Urban Buffers with Protected Areas and Forest Inventory Plots



Scale: 1:1,237,000

Center: 71°57'50"W 41°28'48"N
 States: New York; Connecticut; Massachusetts; Rhode

Index map (selected in magenta)



Legend

- Urban Areas Urban Area (sq km)=431
- Urban Buffers Buffer Area (sq km)=9137
- State Boundary Percent Urban=5%
- Forest Inventory Plots Count=239 plots
- Counties
- 1x1 Degree Grid
- Protected Areas**
- Federal
- Local Government
- Non-Governmental Organization
- Private
- Regional Agency Special District
- State

Note: This map page is intended to accompany the forest summary tables, based on the inventory plots shown. Tables are located at <https://www.fs.fed.us/nrs/atlas/combined/resources/summaries/urban/>.