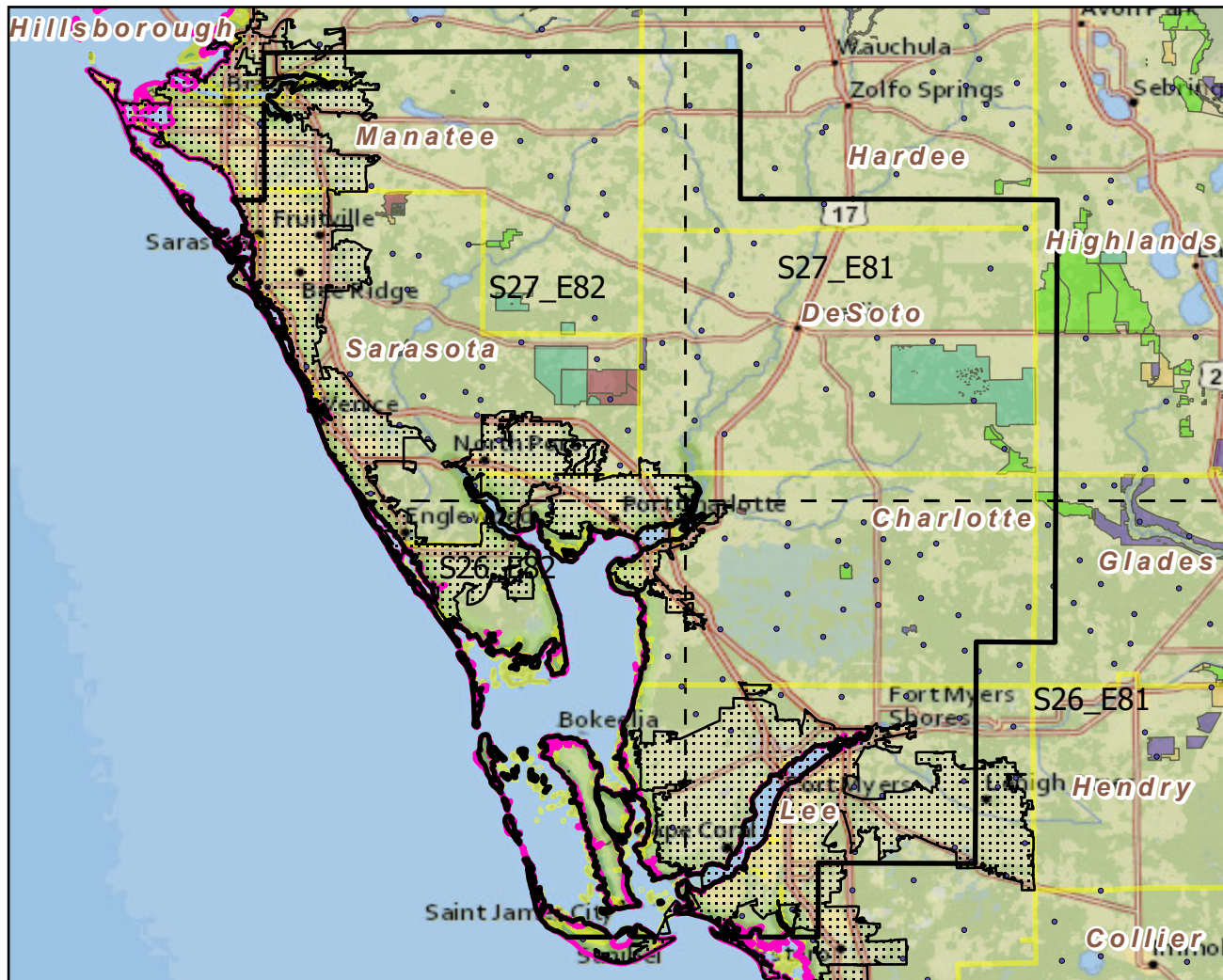


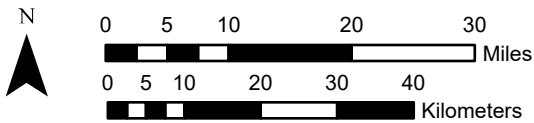
# North Port--Port Charlotte, FL

Landscape Change Research Group  
 Iverson, Prasad, Peters, Matthews  
 Northern Institute of Applied Climate Science  
 USFS Northern Research Station  
 Delaware, Ohio

## Urban Buffers with Protected Areas and Forest Inventory Plots

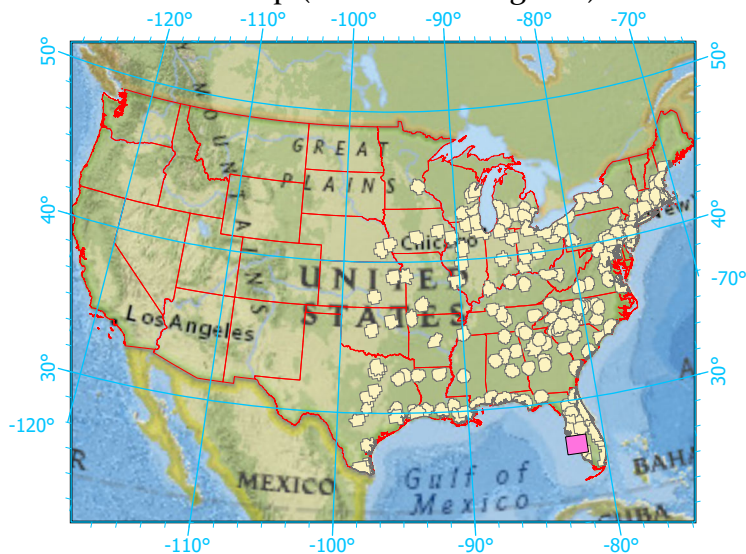


Center: 82°5'3"W 27°0'29"N  
 States: Florida



Scale: 1:989,000

Index map (selected in magenta)



### Legend

- Urban Areas      Urban Area (sq km)=335
- Urban Buffers      Buffer Area (sq km)=9137
- State Boundary      Percent Urban=4%
- Forest Inventory Plots      Count=108 plots
- Counties
- 1x1 Degree Grid
- Protected Areas**
- Federal
- Local Government
- Non-Governmental Organization
- Private
- Regional Agency Special District
- State
- Unknown

Note: This map page is intended to accompany the forest summary tables, based on the inventory plots shown. Tables are located at <https://www.fs.fed.us/nrs/atlas/combined/resources/summaries/urban/>.