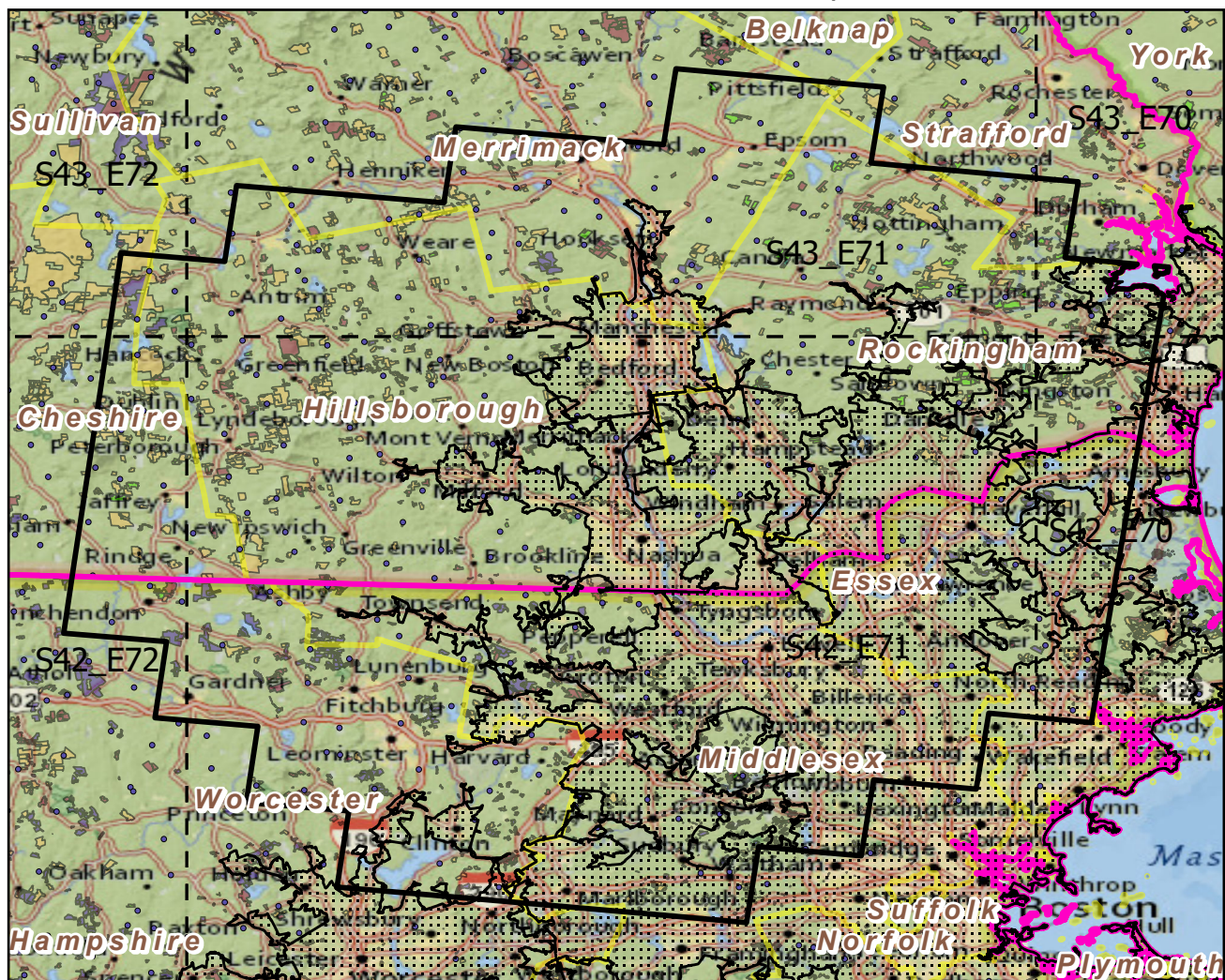
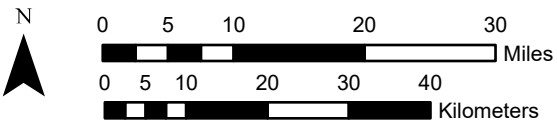


Urban Buffers with Protected Areas and Forest Inventory Plots

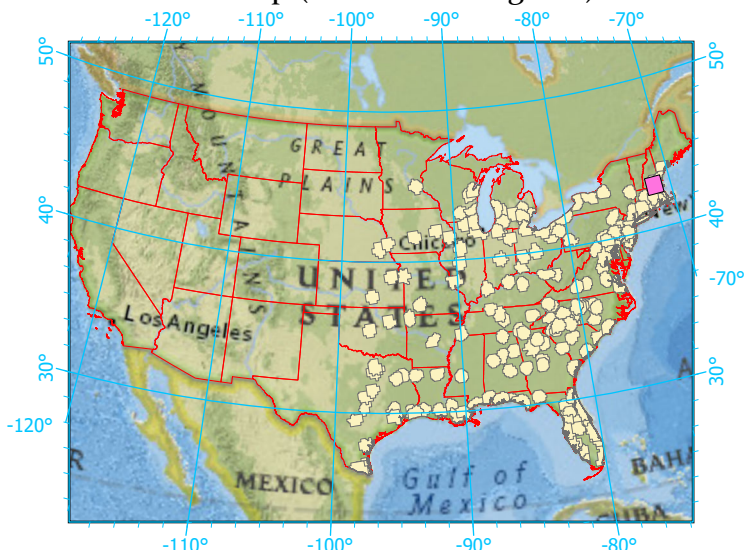


Center: 71°29'40"W 42°48'46"N
 States: Massachusetts; New Hampshire



Scale: 1:929,000

Index map (selected in magenta)



Legend

	Urban Areas	Urban Area (sq km)=481
	Urban Buffers	Buffer Area (sq km)=9137
	State Boundary	Percent Urban=6%
	Forest Inventory Plots	Count=235 plots
	Counties	
	1x1 Degree Grid	

Protected Areas

	Federal
	Local Government
	Non-Governmental Organization
	Private
	Regional Agency Special District
	State

Note: This map page is intended to accompany the forest summary tables, based on the inventory plots shown. Tables are located at <https://www.fs.fed.us/nrs/atlas/combined/resources/summaries/urban/>.